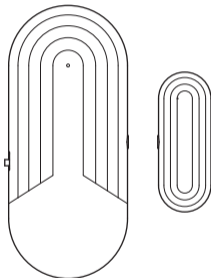
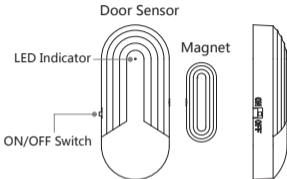


# DS16BL-CR Instruction Manual



**Wireless Door/Window Sensor**

## Product diagram



- ◆ON/OFF Switch :

Turn on or off the door/window sensor.

- ◆Low power reminder :

Indicator flashes red when battery voltage is low.

- ◆Low power design :

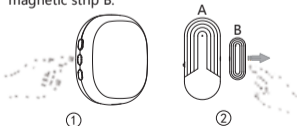
More than one year of service life.

## Technology Parameters

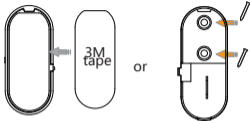
Operating voltage	1*CR2032 battery
Quiescent Current	< 10uA
Working Current	< 15mA
Transmission Distance	100m (open space)
Transmission Frequency	433.949MHz

## How to pair with a receiver

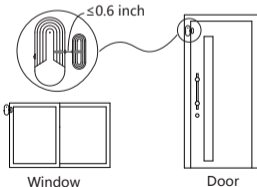
1. Please read the receiver's operating instructions before pairing.
2. When the receiver enters the pairing state, it separates the door magnet host A from the magnetic strip B.



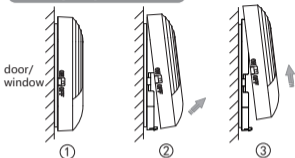
## Installation



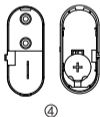
1. Use the double-side adhesive tape or the screws to fix the door sensor at the side of the door/window.



## Battery Replacement



1. Push shell cover up until you can pull it off.



CR2032 battery

2. Please make sure the correct installation of positive and negative poles when you replace CR2032 battery.

---

## **FCC Statement**

Any Changes or modifications not expressly approved by the party responsible for compliance could void the user's authority to operate the equipment.

This device complies with part 15 of the FCC Rules. Operation is subject to the following two conditions:

- (1) This device may not cause harmful interference, and
- (2) This device must accept any interference received, including interference that may cause undesired operation.

### **FCC Radiation Exposure Statement:**

This equipment complies with FCC radiation exposure limits set forth for an uncontrolled environment. This transmitter must not be located or operating in conjunction with any other antenna or transmitter.

## **ISED RSS Warning/ISED RF Exposure Statement**

### **ISED RSS Warning:**

This device complies with Innovation, Science and Economic Development Canada licence-exempt RSS standard(s). Operation is subject to the following two conditions: (1) this device may not cause interference, and (2) this device must accept any interference, including interference that may cause undesired operation of the device.

Le présent appareil est conforme aux CNR d'ISED applicables aux appareils radio exempts de licence. L'exploitation est autorisée aux deux conditions suivantes:

- (1) l'appareil ne doit pas produire de brouillage, et
- (2) l'utilisateur de l'appareil doit accepter tout brouillage radioélectrique subi, même si le brouillage est susceptible d'en compromettre le fonctionnement.

### **ISED RF exposure statement:**

This equipment complies with ISED radiation exposure limits set forth for an uncontrolled environment. This transmitter must not be co-located or operating in conjunction with any other antenna or transmitter.

Le rayonnement de la classe b respecte ISED fixaient un environnement non **contrôlés**.

Lanceurs ou ne peuvent pas coexister cette antenne ou capteurs avec d'autres.