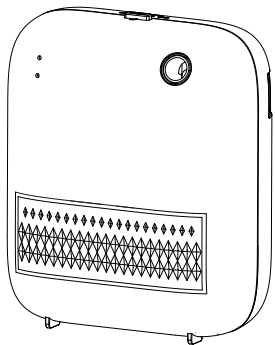


PRODUCT MANUAL

Aroma Diffuser

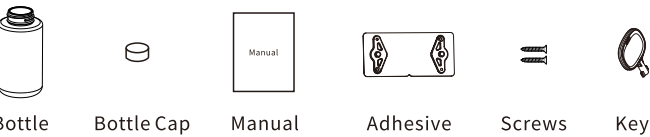
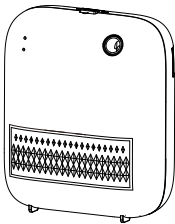


Please read the function introduction based on the product model.

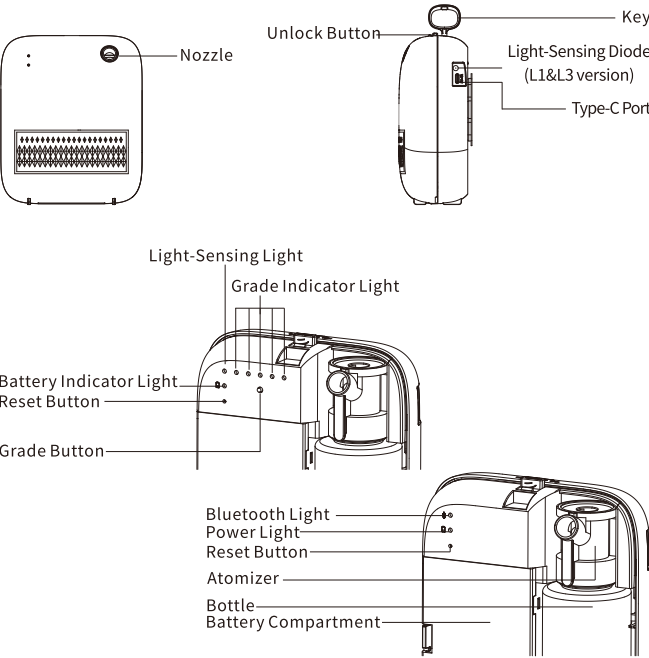
- ☐ 1-D Battery Bluetooth Model: AE109-B1
- ☐ 1-D Battery Light-Sensing Model: AE109-L1
- ☐ 3-D Battery Bluetooth Model: AE109-B3
- ☐ 3-D Battery Light-Sensing Model: AE109-L3

Product Parameters

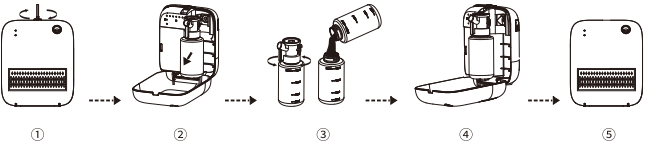
Model	AE109
Dimensions	166.9*137.5*67mm
Bottle	150ml
Voltage	TypeC 5V==1A
Power	0.95W
Coverage B1&L1	120m³/360m³/12713.04ft³
Coverage B3&L3	200m³/600m³/21188.4ft³
Net Weight	420g
Material	Plastic



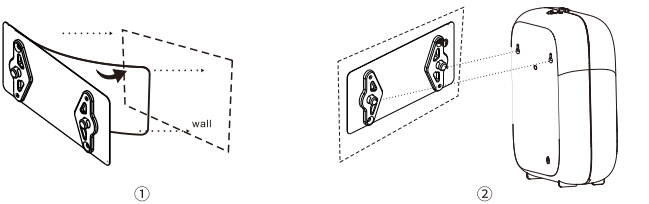
Product Information



Operation Instruction



- 1.Insert the key, rotate it counterclockwise, and press the unlock button.
- 2.Open the device and remove the bottle and atomizer.
- 3.Rotate the atomizer and bottle counterclockwise, fill the bottle with essential oil, and then tighten the bottle and atomizer back on.
- 4.Align and place the bottle and atomizer back into the machine.
- 5.Lock the machine.

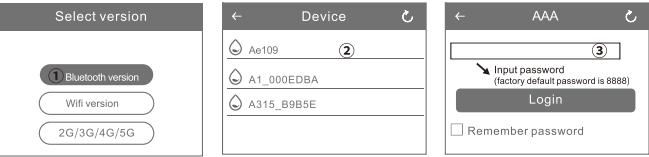


- 1.Peel off the adhesive and stick it to the wall.
- 2.Hang the machine on the fixed screws.

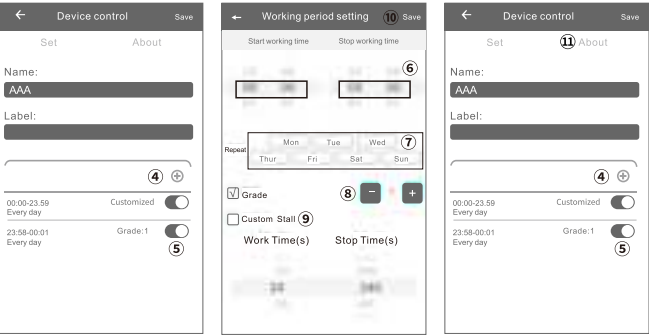
**Note:** Before applying the adhesive to the wall, ensure the surface (tiles or wood) is clean and even.

Bluetooth Operation Guide

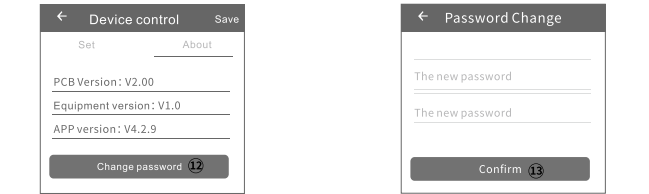
**Where to get the app:**  
Please search for "Scent Marketing" in Google play or APP store.  
**Note:**  
Make sure that the location function of Bluetooth and mobile phone is enabled.



- 1.Open the scent marketing app and select Bluetooth.
- 2.Select your device.
- 3.Enter the default password 8888 and press Login.



- 4.Different schedules by pressing the "+" button. To delete a schedule, swipe left.
- 5.Press the toggle button to turn on/off any schedule.
- 6.On the "Working period setting" page, Set the hours of the day you want your diffuser to run by scrolling the "Start working time" and "Stop working time".
- 7.Select the days of the week you want your diffuser to run (all days are pre-selected).
- 8.Press "+" or "-" to increase or decrease the preset intensity grades (1-5). See chart for details.
- 9.Check (✓) the Custom box to create a custom intensity and scroll the "Spray Time" and "Pause Time"
- 10.Press the "Save" button to update the Settings.
- 11.Change the default password by pressing on the "About" tab, in the "Device control" .



- 12.Press the "Password Change" to access the password change page.
13. Enter a new four-digit password, then click "Confirm".

**Note:**  
If you forget the password, please press the reset button to restore the factory setting. The factory settings password is 8888.

Function Description



**Reset Button**  
B1&B3: Short press to restore the default password (default password: 8888).  
Long press: Restores all settings to factory defaults.  
L1&L3: Long press to reset all settings to factory defaults.  
Note: This button is effective regardless of whether the device is in sleep mode.

**Light-Sensing Mode**  
The device works when it detects sufficient light. If no light is detected, it remains inactive.

**Air Pump Start Conditions**  
When the device is powered on for the first time, it requires about 1 minute to charge the super capacitor before starting (in case the super capacitor is empty).

	B1&L1	B3&L3
Buzzer	One beep.	
Indicator Light	Lights are all on for 2s, then the corresponding function lights flash.	
Battery Indicator Light	Flashes rapidly to indicate the super capacitor is charging. After fully charged, it will display normal battery status.	/

	Bluetooth Operation	One beep when receiving Bluetooth signal.
		When battery level is low, light flashes every 3 seconds.
B1&B3	Button Operation	One beep (with a longer sound for long press, shorter for short press).
		Note: No sound when battery level is critically low.
L1&L3	Button is valid	Note: No sound when battery level is critically low.

Indicator Light		
	B1	B3
Bluetooth Indicator Light (Blue)	Light remains on when connected to the Bluetooth app.	
	Light is off when not connected to the app.	
	Flashes once when a signal is received.	
Battery Indicator Light (Red)	Fully charged, light is off.	
	When battery level is low, light flashes every 3 seconds.	
	When the super capacitor is charging and powered on, the light flashes.	/
L1&L3		
Light-Sensing Indicator Light (Blue)	Light remains on in light-sensing mode. Light remains off when it is not in light-sensing mode.	
Grade Indicator Light (White)	Five grade indicator lights correspond to Grade 1, 2, 3, 4, 5. The corresponding indicator light is on when changing grades.	
Battery Indicator Light (Red)	Full charge: Does not light. Low battery: Flashes once every 3 seconds.	

Concentration and consumption

B1&L1(150ml of essential oil)				Calculated based on working 10 hours per day with 150 ml of essential oil.	
Grade	Work(s)	Pause(s)	Consumption(g/h)	Battery life(Day)	Consumption
G1	3	360	0.1	100	150
G2	3	270	0.13	80	115
G3	3	180	0.2	55	75
G4	3	100	0.36	30	37
G5	5	100	0.6	18	20
Custom	1-7	80-900	/	/	/

B3&L3(150ml of essential oil)				Calculated based on working 10 hours per day with 150 ml of essential oil.	
Grade	Work(s)	Pause(s)	Consumption(g/h)	Battery life(Day)	Consumption
G1	5	360	0.18	330	83
G2	5	270	0.23	250	65
G3	5	180	0.35	180	42
G4	5	100	0.63	100	21
G5	7	100	1.0	60	15
Custom	1-10	80-900	/	/	/

L1&L3 does not support customizing working periods.

Notes:

- 1.Abova data is for reference only. If customers use essential oils with different viscosities, the oil consumption will vary;
- 2.For the best diffusion effect, it's recommended to use essential oils below 30mPa.s.
- 3.The above data are sourced from the results of Guangdong Chiyang Laboratory.

Equipment cleaning

The machine needs to be cleaned when these conditions exist:

- 1.You're changing to another kind of essential oil;
- 2. The atomization volume becomes weak .

Cleaning steps:

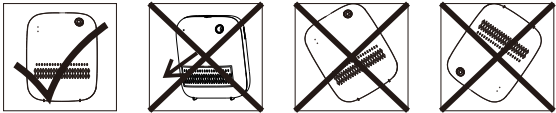
- 1. Pull out the atomized head.
- 2. Find a larger container and fill with industrial alcohol. Soak the atomized head and the bottle for 5-10mins.
- 3. Allow the atomizer head and the bottle to dry.

⚠ Caution

- ⚡ Shall not modify, disassemble or repair the machine arbitrarily. Anyfailurehappens,please contacttechnicianin time.
- 🔌 Shall not damage the power cord, force to bend,yank, heavy load, clip orreprocess.
- 🔌 Shall notuse damaged plugorunmatched with the socket; Shall not wet the machine or the plug; Shall not use overloaded power socket, wire or broken plug.
- ⚡ Shall not touch the wire or product shell when thunderingor/and lightning.
- 🔌 Shallnot disassemble the machine when itis under operating.

⚠ WARNING

- 1.Use the product in the environment with the temperature between-10°C and 50°C: Otherwise, it may damage your product. Products can only be used below 2000m altitude;
- 2.The appliance is only to be used with the recommended vaporizing medium. Theuse ofother substances may give rise to a toxic or fire risk.
- 3.This appliance is not intended for use by persons (including children) with reducedphysical. sensory or mental capabilities, or lack ofexperience and knowledge,unless they have been given supervision or instruction concerning use oftheappliance by a person responsible for their safety.
- 4.Children should be supervised to ensure that they do not play with the appliance.
- 5.The appliance can only be used in conjunction with the power supply device withwhich the appliance is e quipped.
- 6.The appliance s hould only use the safe ultra-low volta ge power s upply specified bythe appliance to prevent failure.
- 7.If the supply cord is damaged, it must be replaced by a special cord or assembly available from the manufacturer or its service agent.
- 8.The appliance can only be powered by the specified voltage of the product, otherwise there is a safety risk
- 9.This device contains batteries that can only be replaced by qualified pers ons.
- 10.Do not tamper with the original operating device and function of the appliance.
- 11.Wear gloves to put the leaky battery into the plastic bag and classify it as garbage to avoid environmental pollution; Do not use non-rechargeable batteries
- 12.This product is intended for sale and application in a business environment. RED Article 10 2 -This product can be used across EU member statesRED Article 10 10 -The product is class 1 product, No restrictionsThe RF distance betwe en body and product is 20cm Frequency Range:2402-2480MHz Max. RF Output Power:-1.67 dBm (EIRP) @2Mbps



Troubleshooting

Before asking to have the machine repaired, please try to diagnose the problem first by following the instructions below.

Breakdown	Solution
Does not diffuse	-Check whether the mode you chose correct or not. -Check if the machine is in a "Non-Working period". -Air pump may be damaged, replace with a new one. -Check whether the tube is loose or not.
Low diffuse	-The atomizing core is blocked, clean with alcohol or change to a new atomizer heads. -Check whether the gasket is damaged/loose or missing. -Check whether the tube is loose or not connected.
Oil spill	-Check whether the bottle is loose . -Check if the gasket in the atomized head is damaged, loose or missing.
Oil sprinkle	-The atomized head is damaged: change to a new one. -The machine is tilled or laying flat, keep the machine vertical.
Abnormal noise	-The air pump is loose, retighten the pump -The air pump is damaged:replace.

ISED Statement

English:

This device contains licence-exempt transmitter(s)/receiver (s)that comply with Innovation, Science and Economic Development Canada’ s licence-exempt RSS(s). Operation is subject to the following two conditions:  
(1) This device may not cause interference.  
(2) This device must accept any interference, including interference that may cause undesired operation of the device.The digital apparatus complies with Canadian CAN ICES-3(B)/NMB-3(B).

French:

Cet appareil contient des émetteurs/récepteurs exempts de licence qui sont conformes aux RSS exemptés de licence d'Innovation, Sciences et Développement économique Canada. L'exploitation est soumise aux deux conditions suivantes :  
(1) Cet appareil ne doit pas provoquer d'interférences.  
(2) Cet appareil doit accepter toute interférence, y compris les interférences susceptibles de provoquer un fonctionnement indésirable de l'appareil.  
l'appareil numérique du ciem conforme canadien peut-3 (b)/ nmb-3 (b).

This device meets the exemption from the routine evaluation limits in section 2.5 of RSS 102 and compliance with RSS 102 RF exposure, users can obtain Canadian information on RF exposure and compliance.cet appareil est conforme à l'exemption des limites d'évaluation courante dans la section 2.5 du cnr - 102 et conformité avec rss 102 de l'exposition aux rf, les utilisateurs peuvent obtenir des données canadiennes sur l'exposition aux champs rf et la conformité.

This equipment complies with Canada radiation exposure limits set forth for an uncontrolled environment.

Cet équipement est conforme aux limites d'exposition aux rayonnements du Canada établies pour un environnement non contrôlé.

This equipment should be installed and operated with minimum distance 20cm between the radiator & your body.

Cet équipement doit être installé et utilisé à une distance minimale de 20 cm entre le radiateur et votre corps.

FCC Statement

This device complies with part 15 of the FCC Rules. Operation is subject to the following two conditions:

- (1) This device may not cause harmful interference, and
- (2) this device must accept any interference received, including interference that may cause undesired operation.

This equipment has been tested and found to comply with the limits for a Class B digital device, pursuant to part 15 of the FCC Rules. These limits are designed to provide reasonable protection against harmful interference in a residential installation. This equipment generates, uses and can radiate radio frequency energy and, if not installed and used in accordance with the instructions, may cause harmful interference to radio communications. However, there is no guarantee that interference will not occur in a particular installation. If this equipment does cause harmful interference to radio or television reception, which can be determined by turning the equipment off and on, the user is encouraged to try to correct the interference by one or more of the following measures:  
- Reorient or relocate the receiving antenna.  
- Increase the separation between the equipment and receiver.  
- Connect the equipment into an outlet on a circuit different from that to which the receiver is connected.  
- Consult the dealer or an experienced radio/TV technician for help.

**FCC Caution:** Any changes or modifications not expressly approved by the party responsible for compliance could void the user's authority to operate the equipment. This transmitter must not be co-located or operating in conjunction with any other antenna or transmitter. Not applicable

RF Exposure

This device complies with FCC radiation exposure limits set forth for an uncontrolled environment. This equipment should be installed and operated with minimum distance 20cm between the radiator & your body.

SAVE THESE INSTRUCTIONS