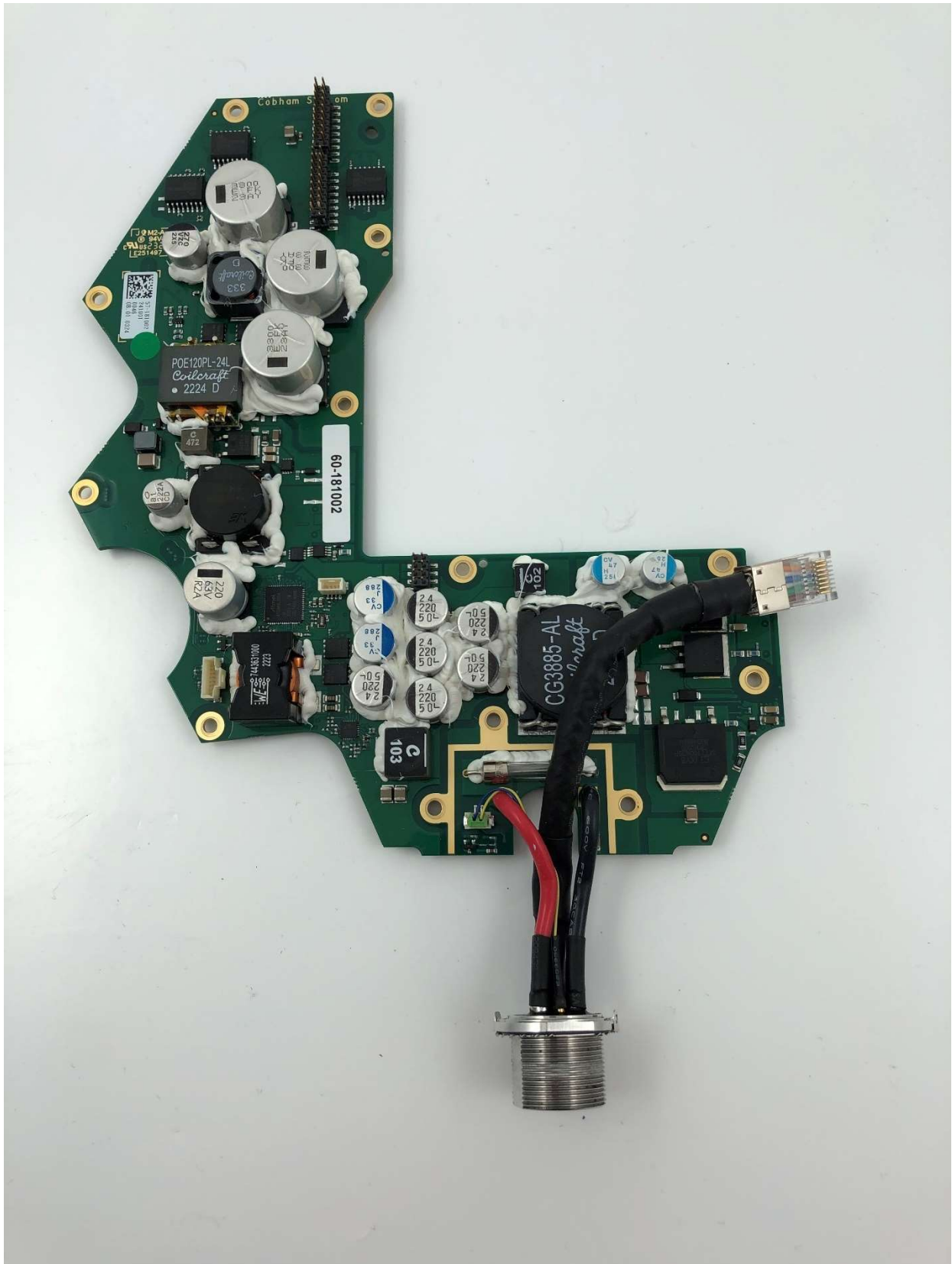
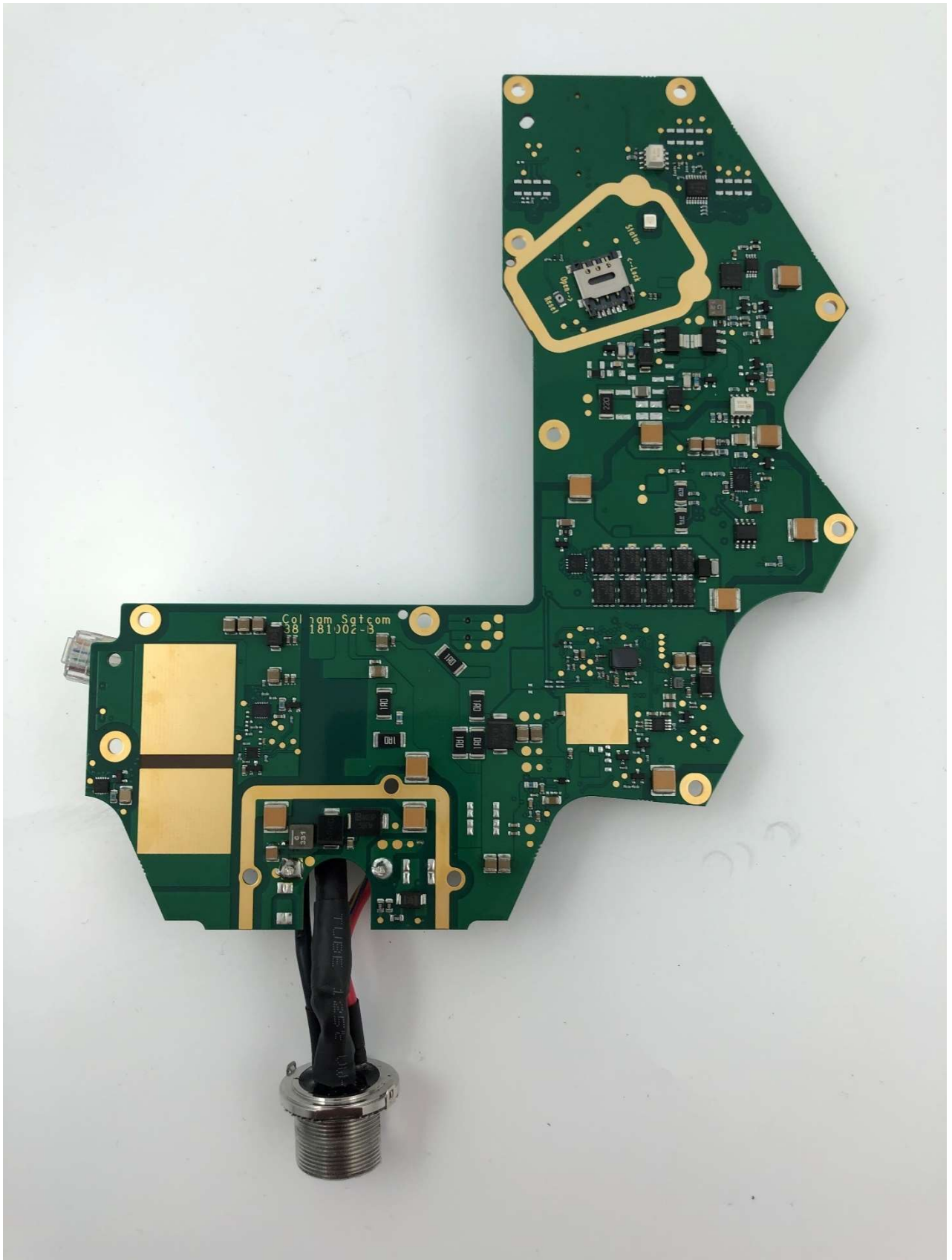


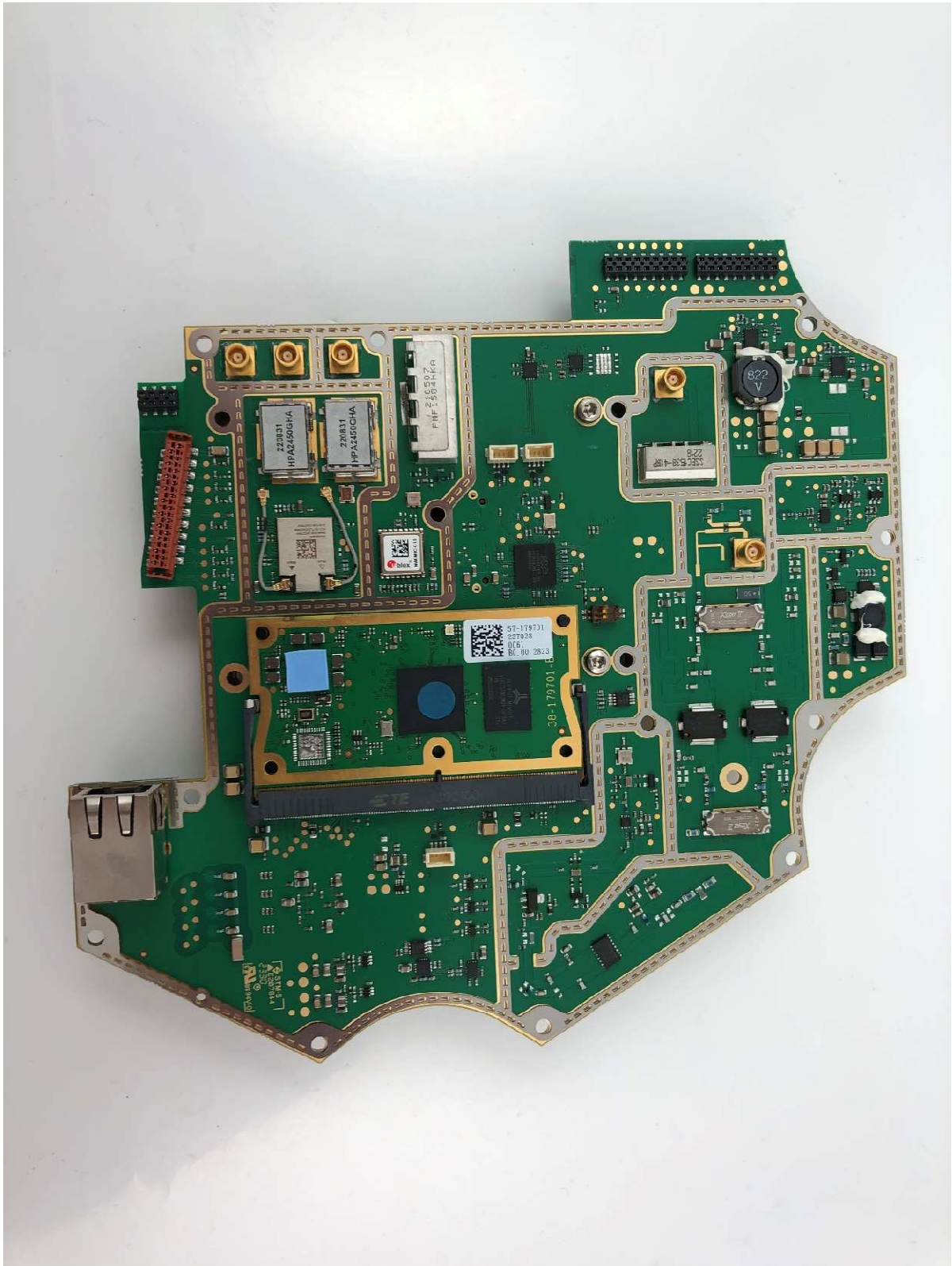
T333M Internal Photos



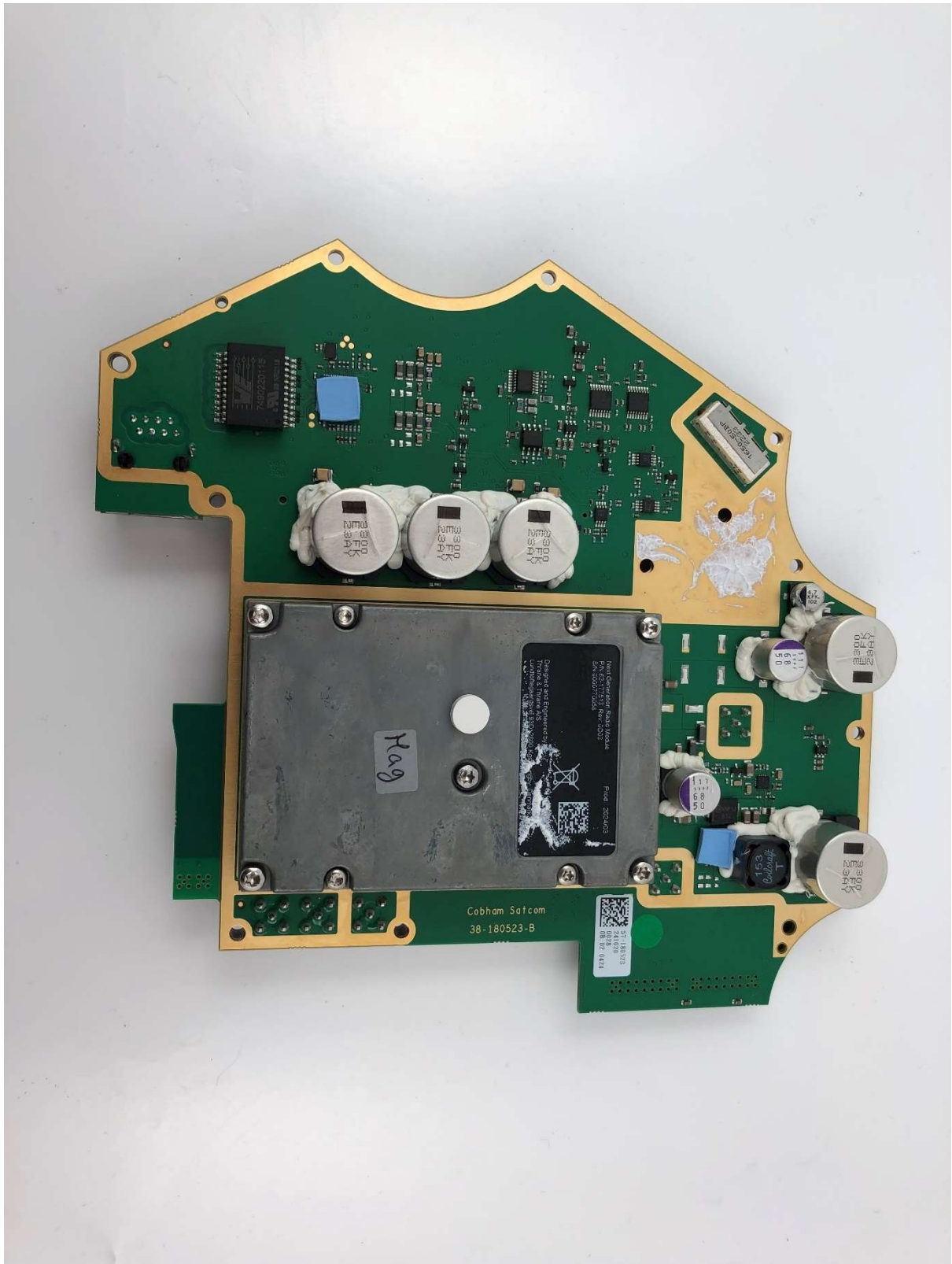
PSM Board.



PSM Board.



Main Board.



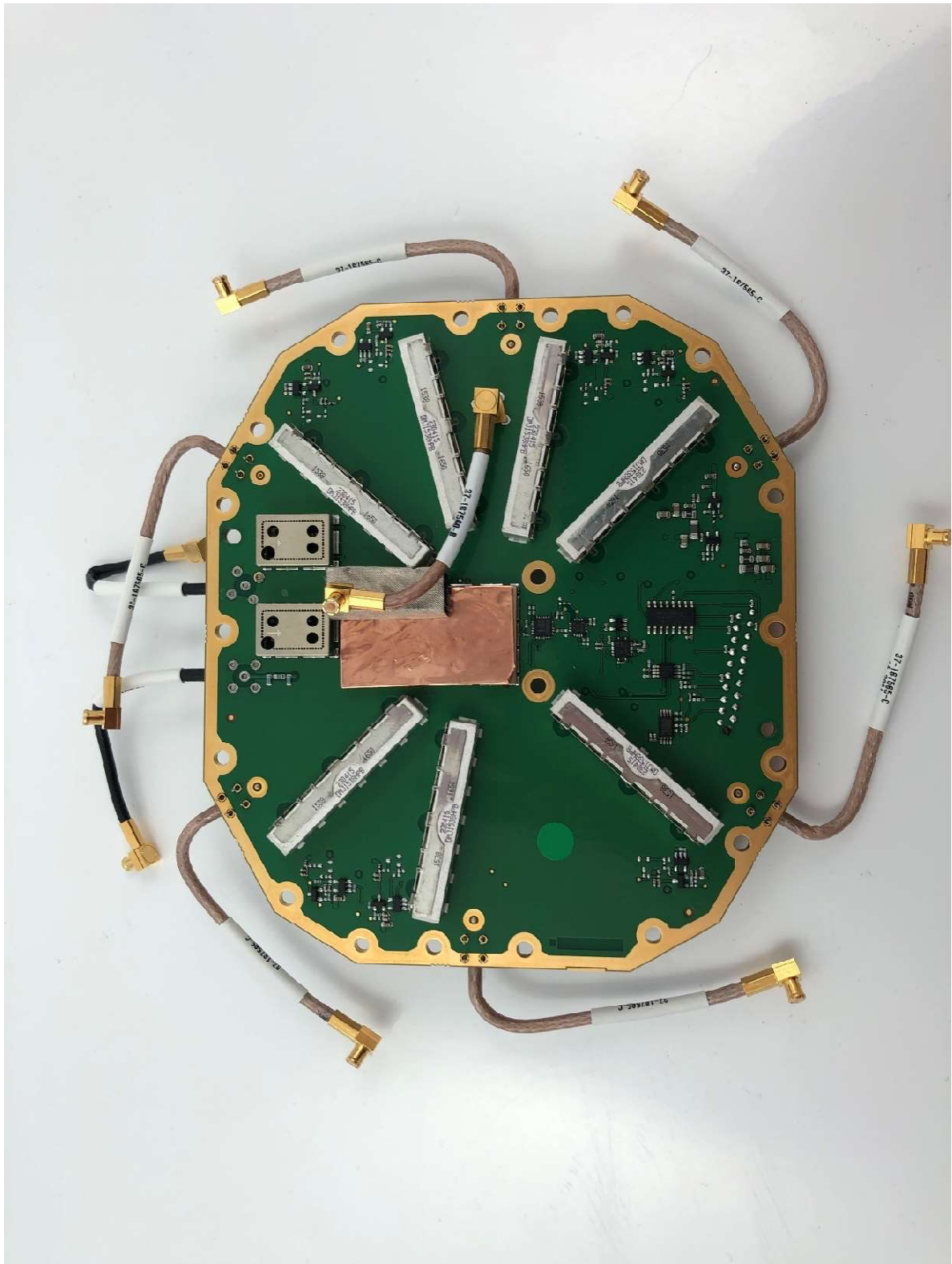
Main Board.



Application processor.



Application processor.



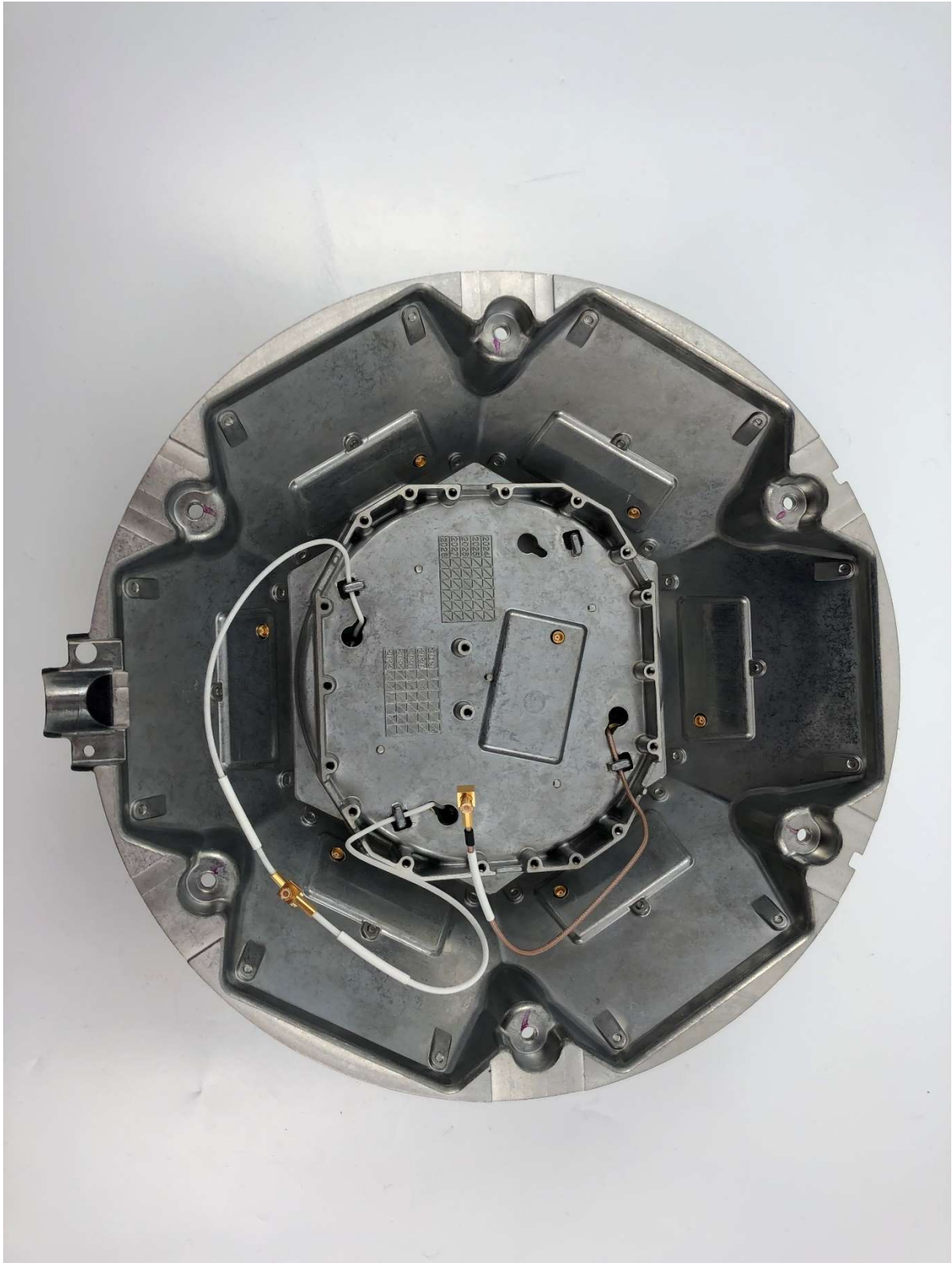
Switch Board



Subassembly showing top view details of the antenna ground plane mounted on the bottom casing:

Photo shows six L-band antennas mounted on the circumference of the antenna ground plane and one L-band antenna mounted at the top.

Two Wi-Fi and one GNSS antenna are mounted at the top of the ground plane.

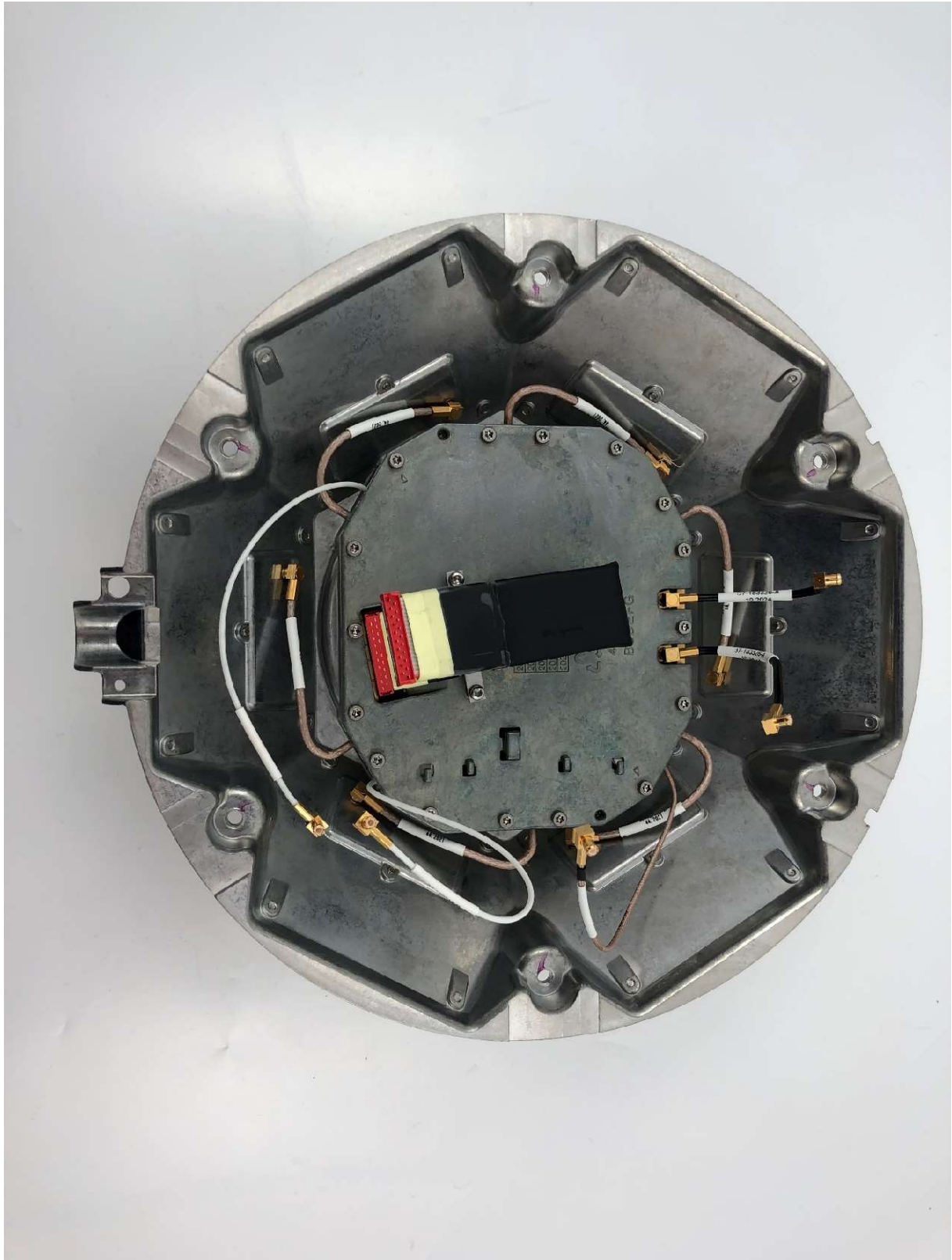


Subassembly showing bottom view details of the antenna ground plane:

The Switch Board will connect directly to the seven L-band antennas.

The two Wi-Fi antennas connect to the Main Board via the two thin white coax cables.

The GNSS antenna connect to the Main Board via the thin brown coax cable.



Subassembly showing bottom view details of the antenna ground plane including Switch Board:

The seven L-band antennas all connect to the Switch Board located below the center shield.

The two Wi-Fi antennas connect to the Main Board via the two thin white coax cables.

The GNSS antenna connect to the Main Board via the thin brown coax cable.



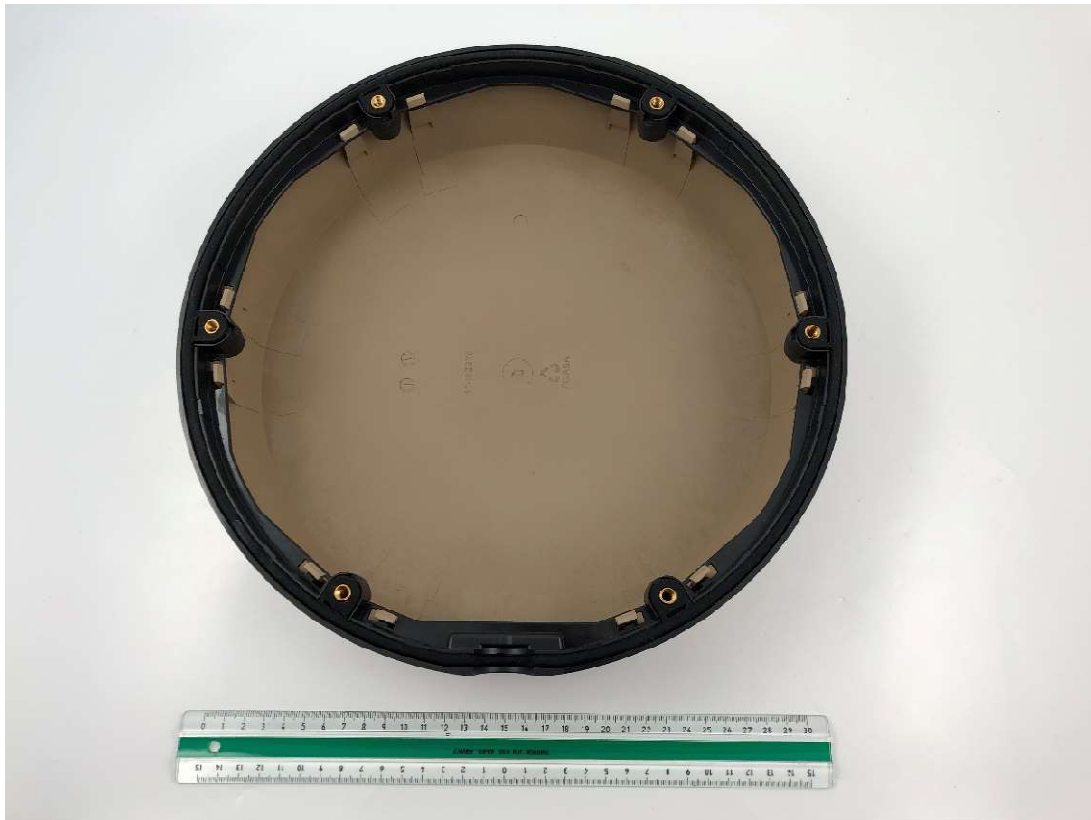
Subassembly showing a top view of bottom casing:

The PCB visible is the Power Supply board (PSM).

The Main Board are located inside the shielding box in the lower right section of the photo.



Subassembly showing a top view of bottom casing without PCBs.



Inside view of antenna radome.