



FREE GIFT

when you register this product jlab.com/register
Product updates | How-to tips | FAQs & more

Gift for US only. No APO/FPO/DPO addresses.

3 MONTHS FREE
TIDAL

With purchase. Visit jlab.com/tidal

Shop products | Product alerts | Burn-in your headphones



JLab Audio + Burn-in Tool



US Compliance

FCC Information

FCC ID: 2AHYV-STPRNC

This equipment has been tested and found to comply with the limits for a Class B digital device, pursuant to Part 15 of the FCC Rules. These limits are designed to provide reasonable protection against harmful interference in a residential installation. This equipment generates, uses and can radiate radio frequency energy and, if not installed and used in accordance with the instructions, may cause harmful interference to radio communications. However, there is no guarantee that interference will not occur in a particular installation. If this equipment does cause harmful interference to radio or television reception, which can be determined by turning the equipment off and on, the user is encouraged to try to correct the interference by one or more of the following measures:

- Reorient or relocate the receiving antenna,
- Increase the separation between the equipment and receiver,
- Connect the equipment into an outlet on a circuit different from that to which the receiver is connected,
- Consult the dealer or an experienced radio/TV technician for help.

If you cannot eliminate the interference, the FCC requires that you stop using your product. Changes or modifications not expressly by the party responsible for compliance could void the user's authority to operate the equipment. This device complies with Part 15 of the FCC Rules. Operation is subject to the following two conditions: (1) this device may not cause harmful interference, and (2) this device must accept any interference received, including interference that may cause undesired operation.

Visit jlab.com/safety to learn how to safely use, including the proper tip installation.

Our team is constantly improving your product experience. This model may have new features or controls which are not detailed in this guide. For the latest version of the manual, please visit www.jlab.com/manuals

QUICK START GUIDE

For full User Manual
+ other JLab products visit
JLAB.COM



OFFICIAL AUDIO PARTNER OF MAJOR LEAGUE SOCCER

#FINDYOURGO

EU Compliance



PEAG LLC dba JLab Audio hereby declares that this device is in compliance with the essential requirements and other relevant provisions of the RED directive.
A copy of the EU Declaration of Conformity is available at jlab.com/compliance

JLab Audio
2281 Las Palmas Drive, Suite 101, Carlsbad, CA 92011, USA



The symbol above indicates that this product and/or battery should not be disposed of with household waste. When you decide to dispose of this product and/or its battery, do so in accordance with local environmental laws and guidelines.

Battery Caution & Disposal Information

Please take care of your battery. Do not; disassemble, burn, puncture, crush or bend your battery. Improper operation of the battery may product smoke. In such an event, ventilate the area. Extinguish any flames with carbon dioxide, dry-powder fire extinguisher, or cover with sand or mud. Take care to avoid conditions of excessive moisture for prolonged periods and do not immerse. Do not expose to temperatures above 50°C/122°F. Charge battery fully before storage or if stored for longer than three months.

Disposal

At the end of its life, please take care to dispose of this product responsibly. Electronic products and batteries contain materials that can be harmful to the environment. Please do not dispose to unsorted waste. Take your electronic waste to a designated collection or recycling facility to be recycled properly. Your local council authority will be able to tell you where your nearest facilities are. There may be one at your local supermarket.

JLab can help you recycle. Learn more jlab.com/recycle

Contact Us

If you're unsatisfied with your purchase, please contact us and we'll take care of you! You can contact our US based customer support team:

Website: jlab.com/contact

Email: support@jlab.com

Phone U.S.: +1 (405) 445-7219 ([Check hours jlab.com/hours](http://jlab.com/hours))

Phone U.K.: +44 (20) 8142 9361 ([Check hours jlab.com/hours](http://jlab.com/hours))

Visit jlab.com/warranty to initiate a return or exchange.



JLAB

USER
MANUAL



**45+
HOURS
PLAYTIME***

**3 NOISE
CONTROL
- MODES -**

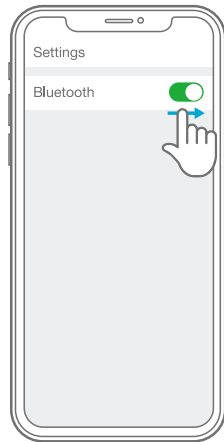
**NOISE
CANCELING**

STUDIOPRO
ANC
OVER-EAR WIRELESS HEADPHONES

BLUETOOTH PAIRING

1

Turn on Bluetooth in your device settings.



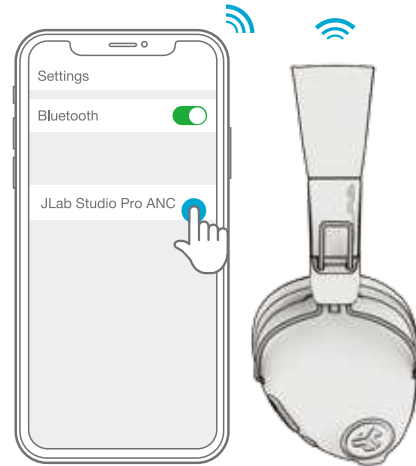
2

Press and hold button for 8 seconds. Release. Lights will flash blue/red.



3

Select "JLab Studio Pro ANC" in your device settings to connect.



BUTTON FUNCTIONS

VOLUME UP:
Press once
TRACK FORWARD:
Press and hold 2+ seconds

VOLUME DOWN:
Press once
TRACK BACKWARD:
Press and hold 2+ seconds

POWER ON/OFF:
Press and hold 2+ seconds

PLAY / PAUSE / ANSWER / HANG UP CALLS:
Press once

REJECT INCOMING CALL:
Press and hold 1+ second

ACTIVATE SIRI (iOS) OR "OK GOOGLE" (ANDROID):
Press twice

BLUETOOTH PAIRING:
See Bluetooth Pairing page



ACTIVE NOISE CONTROL

CONNECTED TO BLUETOOTH:
CYCLE BE AWARE / ANC HIGH / ANC LOW / ANC OFF:
Press once

CONNECTED TO AUX:
Press and hold 2+ seconds to power ON ANC.
CYCLE BE AWARE / ANC HIGH / ANC LOW / ANC OFF:
Press once

NOISE CONTROL ON



AUX INPUT



AUX INPUT CABLE



Plug into in-flight media entertainment



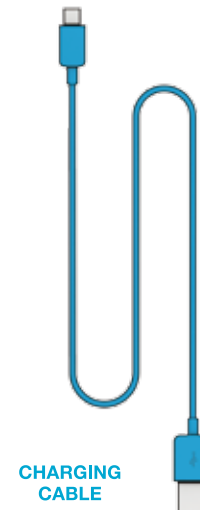
or play without battery power



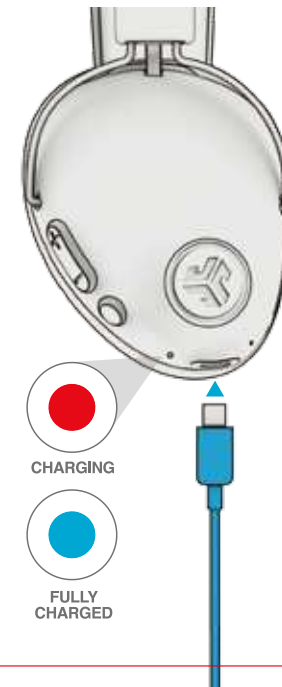
NOTE:

- The ANC function can work when connected with AUX INPUT. Press and hold 2+ seconds the ANC button to power ON ANC.
- The AUX INPUT will override your Bluetooth device connection. Unplug and press power button 2+ seconds to revert back to Bluetooth.
- The button functions for your Bluetooth device will not work when AUX INPUT is connected.
- The volume will be dependent on your AUX device settings. Adjust accordingly.

CHARGING



CHARGING CABLE



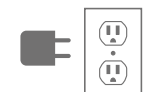
CHARGING



FULLY CHARGED



OR



Connect to computer or USB 5v 1A (or less) output device.

Instructional videos at:
JLAB.COM/MANUALS