

TEST REPORT

of

FCC Part 15 Subpart C AND CANADA RSS-247

Limited Modular Approval

☐ New Application; ☐ Class I PC; ☒ Class II PC

Product : SC iOn Proximity Tag
Brand: CalAmp
Model: PTAG04
Model Difference: N/A
Module FCC ID: APV-SC1204
Module IC: 5843C-SC1204
FCC Rule Part: §15.247, Cat: DTS
IC Rule Part: RSS-247 issue 2: 2017
RSS-Gen issue 5: 2018
Applicant: CalAmp
Address: 2177 Salk Ave Suite 200, Carlsbad, CA 92008

Test Performed by:
International Standards Laboratory Corp.

<LT Lab.>

*Site Registration No.

BSMI: SL2-IN-E-0013; MRA TW0997; TAF: 0997; IC: IC4067B-4;

*Address:

No. 120, Lane 180, Hsin Ho Rd.

Lung-Tan Dist., Tao Yuan City 325, Taiwan

*Tel : 886-3-407-1718; Fax: 886-3-407-1738

Report No.: ISL-19LR135FC

Issue Date : 2019/06/26



Test results given in this report apply only to the specific sample(s) tested and are traceable to national or international standard through calibration of the equipment and evaluating measurement uncertainty herein.

This report MUST not be used to claim product endorsement by TAF, NVLAP or any agency of the Government.

This test report shall not be reproduced except in full, without the written approval of International Standards Laboratory Corp.

VERIFICATION OF COMPLIANCE

Applicant: CalAmp
Product Description: SC iOn Proximity Tag
Brand Name: CalAmp
Model No.: PTAG04
Model Difference: N/A
Module FCC ID: APV-SC1204
Module IC: 5843C-SC1204
Date of test: 2019/06/04 ~ 2019/06/25
Date of EUT Received: 2019/06/04

We hereby certify that:

All the tests in this report have been performed and recorded in accordance with the standards described above and performed by an independent electromagnetic compatibility consultant, International Standards Laboratory Corp.

The test results contained in this report accurately represent the measurements of the characteristics and the energy generated by sample equipment under test at the time of the test. The sample equipment tested as described in this report is in compliance with the limits of above standards.

Test By:



Date:

2019/06/26

Barry Lee / Senior Engineer

Prepared By:



Date:

2019/06/26

Gigi Yeh / Senior Engineer

Approved By:



Date:

2019/06/26

Jerry Liu / Technical Manager

Version

Version No.	Date	Description
00	2019/04/08	Initial creation of document

Uncertainty of Measurement

Description Of Test	Uncertainty
Conducted Emission (AC power line)	2.586 dB
Field Strength of Spurious Radiation	$\leq 30\text{MHz}$: 2.96dB 30-1GHz: 4.22 dB 1-40 GHz: 4.08 dB
Conducted Power	2.412 GHz: 1.30 dB 5.805 GHz: 1.55 dB
Power Density	2.412 GHz: 1.30 dB 5.805 GHz: 1.67 dB
Frequency	0.0032%
Time	0.01%
DC Voltage	1%

Table of Contents

1	General Information.....	5
1.1	Related Submittal(s) / Grant (s)	6
1.2	Test Methodology	6
1.3	Test Facility	6
1.4	Special Accessories	6
1.5	Equipment Modifications.....	6
2	System Test Configuration.....	7
2.1	EUT Configuration	7
2.2	EUT Exercise	7
2.3	Test Procedure.....	7
2.4	Configuration of Tested System.....	8
3	Summary of Test Results.....	9
4	Description of Test Modes.....	9
5	Peak Output Power Measurement	10
5.1	Standard Applicable:	10
5.2	Measurement Equipment Used:	11
5.3	Test Set-up:	11
5.4	Measurement Procedure:	11
5.5	Measurement Result:	12
6	Spurious Emission Test	13
6.1	Standard Applicable	13
6.2	Measurement Equipment Used:	13
6.3	Test SET-UP:.....	13
6.4	Measurement Procedure:	14
6.5	Field Strength Calculation	15
6.6	Measurement Result:	15
7	100kHz Bandwidth of Band Edges Measurement	22
7.1	Standard Applicable:	22
7.2	Measurement Equipment Used:	23
7.3	Test SET-UP:.....	24
7.4	Measurement Procedure:	25
7.5	Field Strength Calculation:	25
7.6	Measurement Result:	25
8	Antenna Requirement	30
8.1	Standard Applicable:	30
8.2	Antenna Connected Construction:	30
	Photographs of Set Up	31
	Photographs of EUT	35

1 General Information

General:

Host Product Name:	SC iOn Proximity Tag
Brand Name:	CalAmp
Host Model Name:	PTAG04
Module Model:	SCI-BLE
Model Difference:	N/A
Power Supply:	3Vdc from Battery *2

IC RSS-Gen:

Product SW/HW version	
Radio SW/HW version	
PMN (Product Marketing Name)	PTAG04
HVIN (Hardware Version Identification Number)	PTAG04
FVIN (Firmware Version Identification Number)	N/A
Test SoftWare Version	
RF power setting:	0

Bluetooth:

Frequency Range:	2402 – 2480MHz
Bluetooth Version:	BLE
Channel number:	40 channels, 2MHz step
Modulation type	Digital Modulation
Modulation type:	GFSK
Tune-up power	-1.62 dBm
Power Tolerance:	+/- 1.0 dBm
Dwell Time:	N/A
Antenna Designation:	PCB Trae antennas:2.0 dBi

Remark: The above DUT's information was declared by manufacturer. Please refer to the specifications or user's manual for more detailed description.

1.1 Related Submittal(s) / Grant (s)

This submittal(s) (test report) is intended for **FCC ID: APV-SC1204** filing to comply with Section 15.247 of the FCC Part 15, Subpart C Rules and **IC: 5843C-SC1204** filing to comply with Industry Canada RSS-247 issue 2: 2017.

1.2 Test Methodology

Both conducted and radiated testing were performed according to the procedures in ANSI C63.10: 2013. Radiated testing was performed at an antenna to EUT distance 3 meters.

KDB Document: 558074 D01 15.247 Meas Guidance v05r02

1.3 Test Facility

The measurement facilities used to collect the 3m Radiated Emission and AC power line conducted data are located on the address of **International Standards Laboratory Corp.**<LT Lab.> No. 120, Lane 180, Hsin Ho Rd., Lung-Tan Dist., Tao Yuan City 325, Taiwan which are constructed and calibrated to meet the FCC requirements in documents ANSI C63.10: 2013. FCC Registration Number is: 487532; Designation Number is: TW0997, Canada Registration Number: 4067B-4.

1.4 Special Accessories

Not available for this EUT intended for grant.

1.5 Equipment Modifications

Not available for this EUT intended for grant.

2 System Test Configuration

2.1 EUT Configuration

The EUT configuration for testing is installed on RF field strength measurement to meet the Commissions requirement and operating in a manner which intends to maximize its emission characteristics in a continuous normal application.

2.2 EUT Exercise

The EUT (Transmitter) was operated in the engineering mode to fix the Tx frequency that was for the purpose of the measurements.

2.3 Test Procedure

2.3.1 Conducted Emissions

The EUT is placed on a turn table which is 0.8 m above ground plane. According to the requirements in Section 6 and RSS-Gen issue 5: 2018. Conducted emissions from the EUT measured in the frequency range between 0.15 MHz and 30MHz using CISPR 16-1-1 Quasi-Peak and Average detector mode.

2.3.2 Radiated Emissions

The EUT is placed on a turn table which is 0.8/1.5 m above ground plane. The turn table shall rotate 360 degrees to determine the position of maximum emission level. EUT is set 3m away from the receiving antenna which varied from 1m to 4m to find out the highest emission. And also, each emission was to be maximized by changing the polarization of receiving antenna both horizontal and vertical. In order to find out the max. emission, the relative positions of this hand-held transmitter (EUT) was rotated through three orthogonal axes and measurement procedures for electric field radiated emissions above 1 GHz the EUT measurement is to be made “while keeping the antenna in the ‘cone of radiation’ from that area and pointed at the area both in azimuth and elevation, with polarization oriented for maximum response.” Is still within the 3dB illumination BW of the measurement antenna. According to the requirements in Section 8 and 13 and Subclause 8.3.1.2 of ANSI C63.10: 2013.

2.4 Configuration of Tested System

Fig. 2-1 Configuration

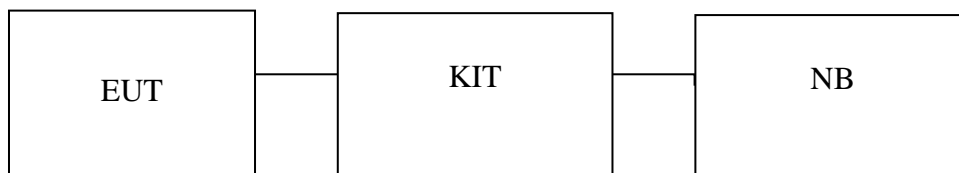


Table 2-1 Equipment Used in Tested System

Item	Equipment	Mfr/Brand	Model/ Type No.	Series No.	Data Cable	Power Cord
1	NB	HP	440-G1	NA	Non-shieling	Non-shieling

Note: All the above equipment/cables were placed in worse case positions to maximize emission signals during emission test.

Grounding: Grounding was in accordance with the manufacturer's requirements and conditions for the intended use.

3 Summary of Test Results

FCC Rules	Description Of Test	Result
§15.207(a) RSS-Gen §8.8	AC Power Line Conducted Emission	N/A
§15.247(b) (3),(4) RSS-247 issue 2, §5.4(4)	Peak Output Power/ EIRP	Compliant
§15.247(a)(2) RSS-247 issue 2, §5.2(1) RSS-Gen §6.6	6dB & 99% Power Bandwidth	N/A
§15.247(d) RSS-247 issue 2, §5.5	100 kHz Bandwidth Of Frequency Band Edges	N/A
§15.247(d) RSS-247 issue 2, §5.5	Spurious Emission	Compliant
§15.247(e) RSS-247 issue 2, §5.2(2)	Peak Power Density	N/A
§15.203 RSS-GEN 8.3	Antenna Requirement	Compliant

4 Description of Test Modes

The EUT has been tested under engineering operating condition.

Test program used to control the EUT for staying in continuous transmitting mode is programmed.

BT LE mode: Channel low (2402MHz), mid (2442MHz) and high (2480MHz) are chosen for full testing.

Note: Test item list below has been re-verify:

1. RF Output power
2. Transmitter spurious emissions above 1GHz
3. Receiver spurious emissions above 1GHz

5 Peak Output Power Measurement

5.1 Standard Applicable:

According to §15.247(b)(3),(4)(b)

(3) For systems using digital modulation in the 902-928 MHz, 2400-2483.5 MHz, and 5725-5850 MHz bands: 1 Watt. As an alternative to a peak power measurement, compliance with the one Watt limit can be based on a measurement of the maximum conducted output power. Maximum Conducted Output Power is defined as the total transmit power delivered to all antennas and antenna elements averaged across all symbols in the signaling alphabet when the transmitter is operating at its maximum power control level. Power must be summed across all antennas and antenna elements. The average must not include any time intervals during which the transmitter is off or is transmitting at a reduced power level. If multiple modes of operation are possible (e.g., alternative modulation methods), the maximum conducted output power is the highest total transmit power occurring in any mode.

(4) The conducted output power limit specified in paragraph (b) of this section is based on the use of antennas with directional gains that do not exceed 6 dBi. Except as shown in paragraph (c) of this section, if transmitting antennas of directional gain greater than 6 dBi are used, the conducted output power from the intentional radiator shall be reduced below the stated values in paragraphs (b)(1), (b)(2), and (b)(3) of this section, as appropriate, by the amount in dB that the directional gain of the antenna exceeds 6 dBi.

(c) Operation with directional antenna gains greater than 6 dBi.

(1) Fixed point-to-point operation:

(i) Systems operating in the 2400-2483.5 MHz band that are used exclusively for fixed, point-to-point operations may employ transmitting antennas with directional gain greater than 6 dBi provided the maximum conducted output power of the intentional radiator is reduced by 1 dB for every 3 dB that the directional gain of the antenna exceeds 6 dBi.

(ii) Systems operating in the 5725-5850 MHz band that are used exclusively for fixed, point-to-point operations may employ transmitting antennas with directional gain greater than 6 dBi without any corresponding reduction in transmitter conducted output power.

According to RSS-247 issue 2, §5.4

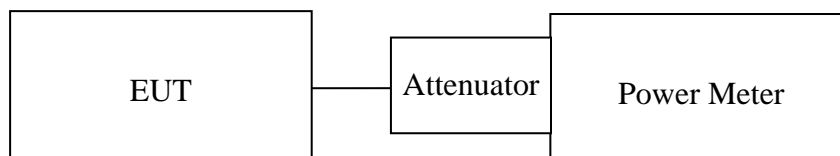
(4) For DTSs employing digital modulation techniques operating in the bands 902-928 MHz and 2400-2483.5 MHz, the maximum peak conducted output power shall not exceed 1W. Except as provided in Section 5.4(5), the e.i.r.p. shall not exceed 4 W.

As an alternative to a peak power measurement, compliance can be based on a measurement of the maximum conducted output power. The maximum conducted output power is the total transmit power delivered to all antennas and antenna elements, averaged across all symbols in the signalling alphabet when the transmitter is operating at its maximum power control level. Power must be summed across all antennas and antenna elements. The average must not include any time intervals during which the transmitter is off or transmitting at a reduced power level. If multiple modes of operation are implemented, the maximum conducted output power is the highest total transmit power occurring in any mode.

5.2 Measurement Equipment Used:

Conducted Emission Test Site					
Equipment Type	MFR	Model Number	Serial Number	Last Cal.	Cal Due.
Power Meter 05	Anritsu	ML2495A	1116010	10/28/2018	10/27/2019
Power Sensor 05	Anritsu	MA2411B	34NKF50	10/28/2018	10/27/2019
Power Sensor 06	DARE	RPR3006W	13I00030SN O33	01/11/2019	01/10/2020
Power Sensor 07	DARE	RPR3006W	13I00030SN O34	01/11/2019	01/10/2020
Temperature Chamber	KSON	THS-B4H100	2287	02/19/2019	02/18/2020
DC Power supply	ABM	8185D	N/A	01/10/2019	01/09/2020
AC Power supply	EXTECH	CFC105W	NA	12/25/2018	12/24/2019
Attenuator	Woken	Watt-65m3502	11051601	NA	NA
Splitter	MCLI	PS4-199	12465	12/26/2017	12/25/2019
Spectrum analyzer	keysight	N9010A	MY56070257	10/15/2018	10/14/2019
Spectrum analyzer	R&S	FSP40	100116	01/10/2019	01/09/2020
Test Software	DARE	Radimation Ver:2013.1.23	NA	NA	NA

5.3 Test Set-up:



5.4 Measurement Procedure:

1. Place the EUT on the table and set it in transmitting mode.
2. Remove the antenna from the EUT and then connect a low loss RF cable from the antenna port to the power meter
3. Record the max. reading.
4. Repeat above procedures until all frequency measured were complete.

5.5 Measurement Result:

Frequency (MHz)	Output Power (dBm)	Output Power (W)	Limit (W)
Low	-1.62	0.00069	1
Mid	-2.19	0.00060	1
High	-3.53	0.00044	1

6 Spurious Emission Test

6.1 Standard Applicable

According to §15.247(c), all other emissions outside these bands shall not exceed the general radiated emission limits specified in §15.209(a). And according to §15.33(a)(1), for an intentional radiator operates below 10GHz, the frequency range of measurements: to the tenth harmonic of the highest fundamental frequency or to 40GHz, whichever is lower.

According to RSS-247 issue 2, §5.5

In any 100 kHz bandwidth outside the frequency band in which the spread spectrum or digitally modulated device is operating, the RF power that is produced shall be at least 20 dB below that in the 100 kHz bandwidth within the band that contains the highest level of the desired power, based on either an RF conducted or a radiated measurement, provided that the transmitter demonstrates compliance with the peak conducted power limits. If the transmitter complies with the conducted power limits based on the use of root-mean-square averaging over a time interval, as permitted under Section 5.4(4), the attenuation required shall be 30 dB instead of 20 dB. Attenuation below the general field strength limits specified in RSS-Gen is not required.

6.2 Measurement Equipment Used:

6.2.1 Conducted Emission at antenna port:

Refer to section 5.2 for details.

6.2.2 Radiated emission:

Refer to section 6.6 for details.

6.3 Test SET-UP:

6.3.1 Conducted Emission at antenna port:

Refer to section 5.3 for details.

6.3.2 Radiated emission:

Refer to section 6.6 for details.

6.4 Measurement Procedure:

1. The EUT was placed on a turn table which is 0.8m above ground plane.
2. The turn table shall rotate 360 degrees to determine the position of maximum emission level.
3. EUT is set 3m away from the receiving antenna which varied from 1m to 4m to find out the highest emissions.
4. When measurement procedures for electric field radiated emissions above 1 GHz the EUT measurement is to be made “while keeping the antenna in the ‘cone of radiation’ from that area and pointed at the area both in azimuth and elevation, with polarization oriented for maximum response.” is still within the 3dB illumination BW of the measurement antenna.
5. Maximum procedure was performed on the six highest emissions to ensure EUT compliance.
6. And also, each emission was to be maximized by changing the polarization of receiving antenna both horizontal and vertical.
7. Repeat above procedures until all frequency measured were complete.

Test receiver setting : Blew 1GHz
 Detector : Average(9kHz – 90kHz, 110kHz – 90kHz), Quasi-Peak
 Bandwidth : 200Hz, 120kHz
 Test spectrum setting : Above 1GHz
 Peak : RBW=1MHz, VBW=3MHz, Sweep=auto
 Average (for BLE) : RBW=1MHz, VBW=3kHz, Sweep=auto

Average Measurement Setting (VBW)

Mode	Duty Cycle (%)	T _{on} (us)	T _{off} (us)	1/T _{on} (kHz)	Determined VBW Setting
Bluetooth LE	63.2	395	230	2.53	3kHz

6.5 Field Strength Calculation

The field strength is calculated by adding the Antenna Factor and Cable Factor and subtracting the Amplifier Gain and Duty Cycle Correction Factor(if any) from the measured reading. The basic equation with a sample calculation is as follows:

$$FS = RA + AF + CL - AG$$

Where	FS = Field Strength	CL = Cable Attenuation Factor (Cable Loss)
	RA = Reading Amplitude	AG = Amplifier Gain
	AF = Antenna Factor	

6.6 Measurement Result:

Note: Refer to next page spectrum analyzer data chart and tabular data sheets.

Radiated Spurious Emission Measurement Result (below 1GHz)

Operation Mode	TX CH Low	Test Date	2019/06/17
Fundamental Frequency	2402MHz	Test By	Barry
Temperature	25	Pol	Ver./Hor
Humidity	60 %		

No	Freq MHz	Reading dBuV	Factor dB	Level dBuV/m	Limit dBuV/m	Margin dB	Remark	Pol V/H
1	240.49	37.08	-5.82	31.26	46.00	-14.74	Peak	VERTICAL
2	335.55	43.99	-3.12	40.87	46.00	-5.13	Peak	VERTICAL
3	357.86	38.56	-2.89	35.67	46.00	-10.33	Peak	VERTICAL
4	537.31	42.17	0.24	42.41	46.00	-3.59	Peak	VERTICAL
5	557.68	39.95	0.39	40.34	46.00	-5.66	Peak	VERTICAL
6	573.20	36.29	0.70	36.99	46.00	-9.01	Peak	VERTICAL
1	323.91	41.60	-3.35	38.25	46.00	-7.75	Peak	HORIZONTAL
2	348.16	41.77	-3.02	38.75	46.00	-7.25	Peak	HORIZONTAL
3	359.80	41.85	-2.86	38.99	46.00	-7.01	Peak	HORIZONTAL
4	522.76	39.24	0.03	39.27	46.00	-6.73	Peak	HORIZONTAL
5	556.71	42.08	0.39	42.47	46.00	-3.53	Peak	HORIZONTAL
6	580.96	40.56	0.92	41.48	46.00	-4.52	Peak	HORIZONTAL

Remark:

- 1 No further spurious emissions detected from the lowest internal frequency and 30MHz.
- 2 Measuring frequencies from the lowest internal frequency to the 1GHz.
- 3 Radiated emissions measured in frequency range from 9MHz to 1000MHz were made with an instrument detector setting 9-90kHz/110-490kHz using PK/AV and other Frequency Band using PK/QP
- 4 Measurement result within this frequency range shown “ - ” in the table above means the reading of emissions are attenuated more than 20dB below the permissible limits or the field strength is too small to be measured.
- 5 The IF bandwidth of SPA between 9kHz to 30MHz was 10kHz, VBW= 30kHz; between 30MHz to 1GHz was 100kHz, VBW=300kHz.

Radiated Spurious Emission Measurement Result (below 1GHz)

Operation Mode	TX CH Mid	Test Date	2019/06/17
Fundamental Frequency	2442MHz	Test By	Barry
Temperature	25	Pol	Ver./Hor
Humidity	60 %		

No	Freq MHz	Reading dBuV	Factor dB	Level dBuV/m	Limit dBuV/m	Margin dB	Remark	Pol V/H
1	312.27	41.87	-3.62	38.25	46.00	-7.75	Peak	VERTICAL
2	348.16	36.32	-3.02	33.30	46.00	-12.70	Peak	VERTICAL
3	537.31	39.70	0.24	39.94	46.00	-6.06	Peak	VERTICAL
4	561.56	40.96	0.42	41.38	46.00	-4.62	Peak	VERTICAL
5	574.17	37.83	0.72	38.55	46.00	-7.45	Peak	VERTICAL
6	620.73	33.66	1.61	35.27	46.00	-10.73	Peak	VERTICAL
1	323.91	40.55	-3.35	37.20	46.00	-8.80	Peak	HORIZONTAL
2	348.16	42.33	-3.02	39.31	46.00	-6.69	Peak	HORIZONTAL
3	359.80	42.61	-2.86	39.75	46.00	-6.25	Peak	HORIZONTAL
4	543.13	42.97	0.31	43.28	46.00	-2.72	Peak	HORIZONTAL
5	595.51	41.64	1.32	42.96	46.00	-3.04	Peak	HORIZONTAL
6	604.24	38.78	1.47	40.25	46.00	-5.75	Peak	HORIZONTAL

Remark:

- 1 No further spurious emissions detected from the lowest internal frequency and 30MHz.
- 2 Measuring frequencies from the lowest internal frequency to the 1GHz.
- 3 Radiated emissions measured in frequency range from 9MHz to 1000MHz were made with an instrument detector setting 9-90kHz/110-490kHz using PK/AV and other Frequency Band using PK/QP
- 4 Measurement result within this frequency range shown “ - ” in the table above means the reading of emissions are attenuated more than 20dB below the permissible limits or the field strength is too small to be measured.
- 5 The IF bandwidth of SPA between 9kHz to 30MHz was 10kHz, VBW= 30kHz; between 30MHz to 1GHz was 100kHz, VBW=300kHz.

Radiated Spurious Emission Measurement Result (below 1GHz)

Operation Mode	TX CH High	Test Date	2019/06/17
Fundamental Frequency	2480MHz	Test By	Barry
Temperature	25	Pol	Ver./Hor
Humidity	60 %		

No	Freq MHz	Reading dBuV	Factor dB	Level dBuV/m	Limit dBuV/m	Margin dB	Remark	Pol V/H
1	323.91	34.57	-3.35	31.22	46.00	-14.78	Peak	VERTICAL
2	359.80	36.13	-2.86	33.27	46.00	-12.73	Peak	VERTICAL
3	381.14	35.76	-2.35	33.41	46.00	-12.59	Peak	VERTICAL
4	537.31	41.00	0.24	41.24	46.00	-4.76	Peak	VERTICAL
5	568.35	42.69	0.56	43.25	46.00	-2.75	Peak	VERTICAL
6	833.16	31.13	5.11	36.24	46.00	-9.76	Peak	VERTICAL
1	323.91	41.63	-3.35	38.28	46.00	-7.72	Peak	HORIZONTAL
2	355.92	44.70	-2.92	41.78	46.00	-4.22	Peak	HORIZONTAL
3	371.44	40.90	-2.49	38.41	46.00	-7.59	Peak	HORIZONTAL
4	535.37	42.30	0.22	42.52	46.00	-3.48	Peak	HORIZONTAL
5	579.02	40.27	0.87	41.14	46.00	-4.86	Peak	HORIZONTAL
6	597.45	42.65	1.36	44.01	46.00	-1.99	Peak	HORIZONTAL

Remark:

- 1 No further spurious emissions detected from the lowest internal frequency and 30MHz.
- 2 Measuring frequencies from the lowest internal frequency to the 1GHz.
- 3 Radiated emissions measured in frequency range from 9MHz to 1000MHz were made with an instrument detector setting 9-90kHz/110-490kHz using PK/AV and other Frequency Band using PK/QP
- 4 Measurement result within this frequency range shown “ - ” in the table above means the reading of emissions are attenuated more than 20dB below the permissible limits or the field strength is too small to be measured.
- 5 The IF bandwidth of SPA between 9kHz to 30MHz was 10kHz, VBW= 30kHz; between 30MHz to 1GHz was 100kHz, VBW=300kHz.

Radiated Spurious Emission Measurement Result (above 1GHz)

Operation Mode	TX CH Low	Test Date	2019/06/17
Fundamental Frequency	2402MHz	Test By	Barry
Temperature	25	Pol	Ver./Hor
Humidity	60 %		

No	Freq MHz	Reading dBuV	Factor dB	Level dBuV/m	Limit dBuV/m	Margin dB	Remark	Pol V/H
1	4804.00	61.75	-9.41	52.34	74.00	-21.66	Peak	VERTICAL
2	7206.00	45.47	-1.83	43.64	74.00	-30.36	Peak	VERTICAL
1	4804.00	57.61	-9.41	48.20	74.00	-25.80	Peak	HORIZONTAL
2	7206.00	46.10	-1.83	44.27	74.00	-29.73	Peak	HORIZONTAL

Remark:

- 1 Measuring frequencies from the lowest internal frequency to the 10th of fundamental frequency
- 2 Field strength limits for frequency above 1000MHz are based on average limits. However, Peak mode field strength shall not exceed the average limits specified plus 20dB.
- 3 Measurement of data within this frequency range shown “ - ” in the table above means the reading of emissions are attenuated more than 20dB below the permissible limits or the field strength is too small to be measured.
- 4 Spectrum Peak mode IF bandwidth Setting : 1GHz- 26GHz, RBW= 1MHz, Sweep time= 200 ms., the VBW setting was 3 MHz.
- 5 Spectrum AV mode if bandwidth Setting : 1GHz- 26GHz, RBW= 1MHz, VBW= 3kHz, Sweep time= 200 ms.

Radiated Spurious Emission Measurement Result (above 1GHz)

Operation Mode	TX CH Mid	Test Date	2019/06/17
Fundamental Frequency	2442MHz	Test By	Barry
Temperature	25	Pol	Ver./Hor
Humidity	60 %		

No	Freq MHz	Reading dBuV	Factor dB	Level dBuV/m	Limit dBuV/m	Margin dB	Remark	Pol V/H
1	4884.00	60.60	-9.20	51.40	74.00	-22.60	Peak	VERTICAL
2	7326.00	46.21	-1.75	44.46	74.00	-29.54	Peak	VERTICAL
1	4884.00	57.32	-9.20	48.12	74.00	-25.88	Peak	HORIZONTAL
2	7326.00	46.45	-1.75	44.70	74.00	-29.30	Peak	HORIZONTAL

Remark:

- 1 Measuring frequencies from the lowest internal frequency to the 10th of fundamental frequency
- 2 Field strength limits for frequency above 1000MHz are based on average limits. However, Peak mode field strength shall not exceed the average limits specified plus 20dB.
- 3 Measurement of data within this frequency range shown “ - ” in the table above means the reading of emissions are attenuated more than 20dB below the permissible limits or the field strength is too small to be measured.
- 4 Spectrum Peak mode IF bandwidth Setting : 1GHz- 26GHz, RBW= 1MHz, Sweep time= 200 ms., the VBW setting was 3 MHz.
- 5 Spectrum AV mode if bandwidth Setting : 1GHz- 26GHz, RBW= 1MHz, VBW= 3kHz, Sweep time= 200 ms.

Radiated Spurious Emission Measurement Result (above 1GHz)

Operation Mode	TX CH High	Test Date	2019/06/17
Fundamental Frequency	2480MHz	Test By	Barry
Temperature	25	Pol	Ver./Hor
Humidity	60 %		

No	Freq MHz	Reading dBuV	Factor dB	Level dBuV/m	Limit dBuV/m	Margin dB	Remark	Pol V/H
1	4960.00	58.78	-9.01	49.77	74.00	-24.23	Peak	VERTICAL
2	7440.00	45.66	-1.75	43.91	74.00	-30.09	Peak	VERTICAL
1	4960.00	53.92	-9.01	44.91	74.00	-29.09	Peak	HORIZONTAL
2	7440.00	45.99	-1.75	44.24	74.00	-29.76	Peak	HORIZONTAL

Remark:

- 1 Measuring frequencies from the lowest internal frequency to the 10th of fundamental frequency
- 2 Field strength limits for frequency above 1000MHz are based on average limits. However, Peak mode field strength shall not exceed the average limits specified plus 20dB.
- 3 Measurement of data within this frequency range shown “ - ” in the table above means the reading of emissions are attenuated more than 20dB below the permissible limits or the field strength is too small to be measured.
- 4 Spectrum Peak mode IF bandwidth Setting : 1GHz- 26GHz, RBW= 1MHz, Sweep time= 200 ms., the VBW setting was 3 MHz.
- 5 Spectrum AV mode if bandwidth Setting : 1GHz- 26GHz, RBW= 1MHz, VBW= 3kHz, Sweep time= 200 ms.

7 100kHz Bandwidth of Band Edges Measurement

7.1 Standard Applicable:

According to §15.247(c), in any 100 kHz bandwidth outside the frequency bands in which the spread spectrum intentional radiator is operating, the radio frequency power that is produced by the intentional radiator shall be at least 20dB below that in the 100kHz bandwidth within the band that contains the highest level of the desired power. In addition, radiated emissions which fall in the restricted bands, as defined in §15.205(a), must also comply with the radiated emission limits specified in §15.209(a).

According to RSS-247 issue 2, §5.5

In any 100 kHz bandwidth outside the frequency band in which the spread spectrum or digitally modulated device is operating, the RF power that is produced shall be at least 20 dB below that in the 100 kHz bandwidth within the band that contains the highest level of the desired power, based on either an RF conducted or a radiated measurement, provided that the transmitter demonstrates compliance with the peak conducted power limits. If the transmitter complies with the conducted power limits based on the use of root-mean-square averaging over a time interval, as permitted under Section 5.4(4), the attenuation required shall be 30 dB instead of 20 dB attenuation below the general field strength limits specified in RSS-Gen is not required.

7.2 Measurement Equipment Used:

7.2.1 Conducted Emission at antenna port:

Refer to section 6.2 for details.

7.2.2 Radiated emission:

Chamber 19(966)					
Equipment Type	MFR	Model Number	Serial Number	Last Cal.	Cal Due.
Spectrum analyzer	R&S	FSP40	100116	01/10/2019	01/09/2020
EMI Receiver	R&S	ESR3	102461	08/08/2018	08/07/2019
Loop Antenna(9K-30M)	EM	EM-6879	271	06/06/2018	06/05/2020
Bilog Antenna (30M-1G)	SCHWARZBECK	VULB9168 w 5dB Att	736	01/29/2019	01/28/2020
Horn antenna (1G-18G)	SCHWARZBECK	9120D	9120D-1627	11/27/2017	11/26/2019
Horn antenna (18G-26G)	Com-power	AH-826	081001	11/21/2017	11/20/2019
Horn antenna (26G-40G)	Com-power	AH-640	100A	03/29/2019	03/28/2021
Preamplifier (9k-1000M)	HP	8447F	3113A06362	01/14/2019	01/13/2020
Preamplifier(1G-26G)	Agilent	8449B	3008A02471	10/29/2018	10/28/2019
Preamplifier (26G-40G)	MITEQ	JS4-26004000- 27-5A	818471	05/06/2019	05/05/2020
RF Cable (9k-18G)	HUBER SUHNER	SUCOFLEX 104A	MY1397/4A	01/17/2019	01/16/2020
RF cable (18G~40G)	HUBER SUHNER	Sucoflex 102	27963/2&37421/2	11/12/2018	11/11/2019
Turn Table	MF	Turn Table-19	Turn Table-19	N/A	N/A
Mast Tower	MF	JSDES-15A	1308283	N/A	N/A
Controller	MF	MF-7802BS	MF780208460	N/A	N/A
AC power source	T-Power	TFC-1005	40006471	N/A	N/A
Signal Generator	Anritsu	MG3692A	20311	01/09/2019	01/08/2020
2.4G Filter	Micro-Tronics	Brm50702	76	12/25/2018	12/24/2019
Test Software	Audix	E3 Ver:6.12023	N/A	N/A	N/A

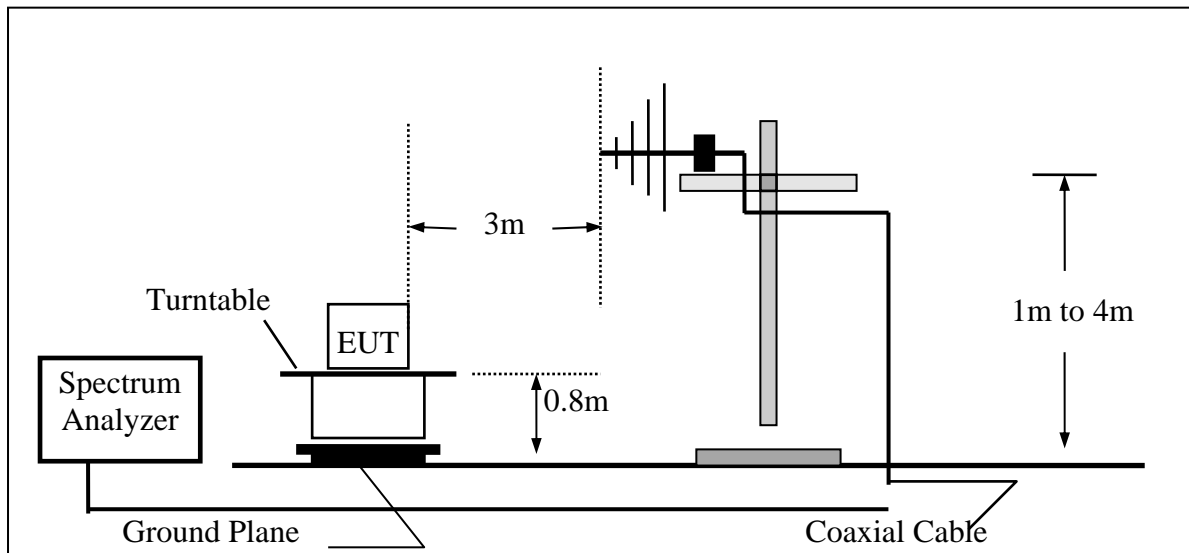
7.3 Test SET-UP:

7.3.1 Conducted Emission at antenna port:

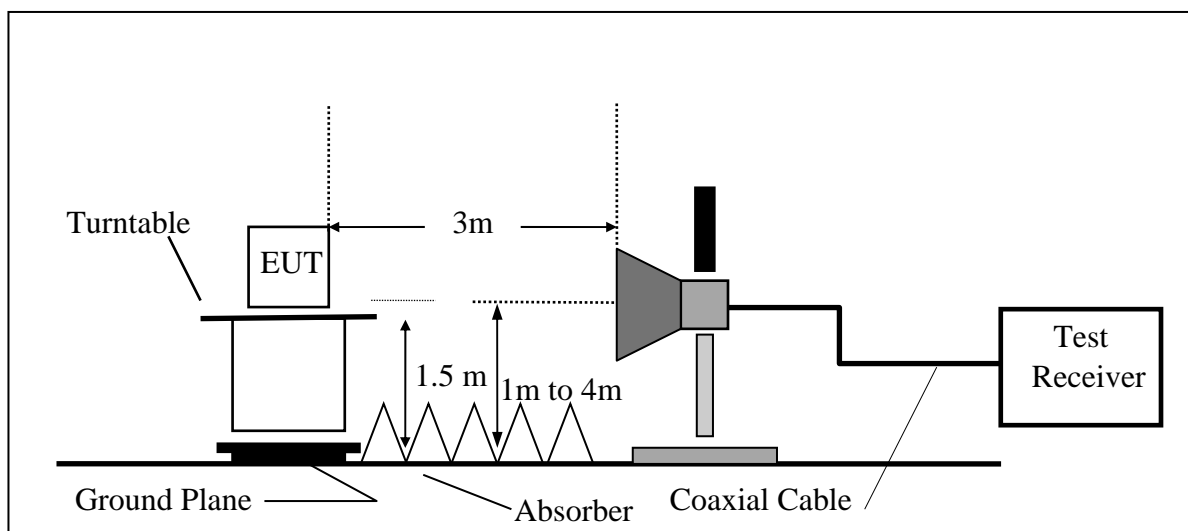
Refer to section 6.3 for details.

7.3.2 Radiated emission:

(A) Radiated Emission Test Set-Up, Frequency Below 1000MHz



(B) Radiated Emission Test Set-UP Frequency Over 1 GHz



7.4 Measurement Procedure:

1. Place the EUT on the table and set it in transmitting mode.
2. Remove the antenna from the EUT and then connect a low loss RF cable from the antenna port to the spectrum analyzer.
3. Set center frequency of spectrum analyzer = operating frequency.
4. Set the spectrum analyzer as RBW, VBW=100kHz, Span=25MHz, Sweep = auto
5. Mark Peak, 2.390GHz and 2.4835GHz and record the max. level.
6. Repeat above procedures until all frequency measured were complete.

7.5 Field Strength Calculation:

The field strength is calculated by adding the Antenna Factor and Cable Factor and subtracting the Amplifier Gain and Duty Cycle Correction Factor (if any) from the measured reading. The basic equation with a sample calculation is as follows:

$$FS = RA + AF + CL - AG$$

Where	FS = Field Strength	CL = Cable Attenuation Factor (Cable Loss)
	RA = Reading Amplitude	AG = Amplifier Gain
	AF = Antenna Factor	

7.6 Measurement Result:

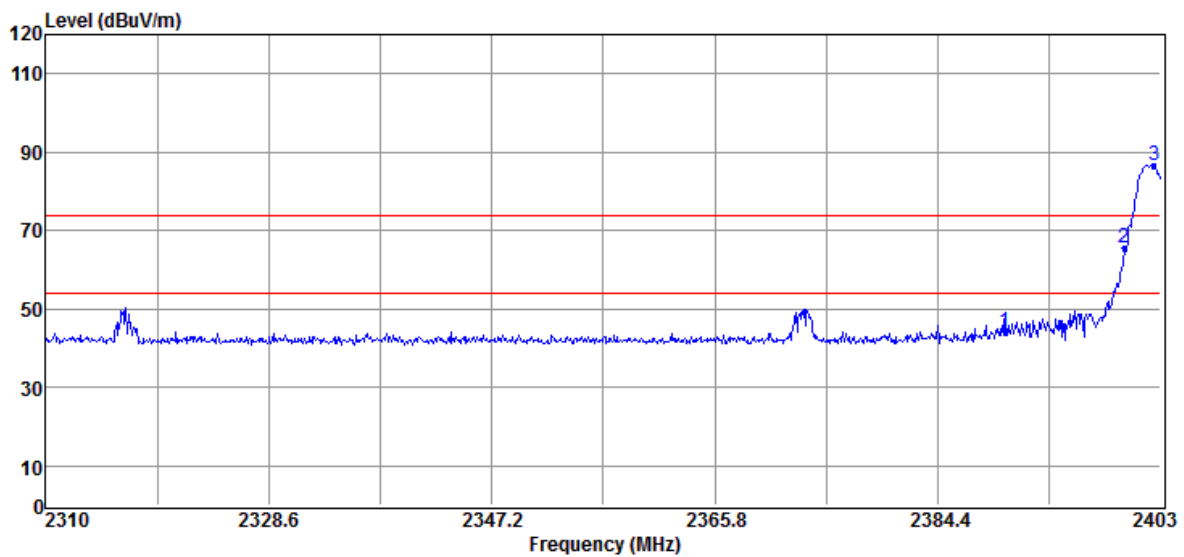
Note: Refer to next page spectrum analyzer data chart and tabular data sheets.

Radiated Emission:

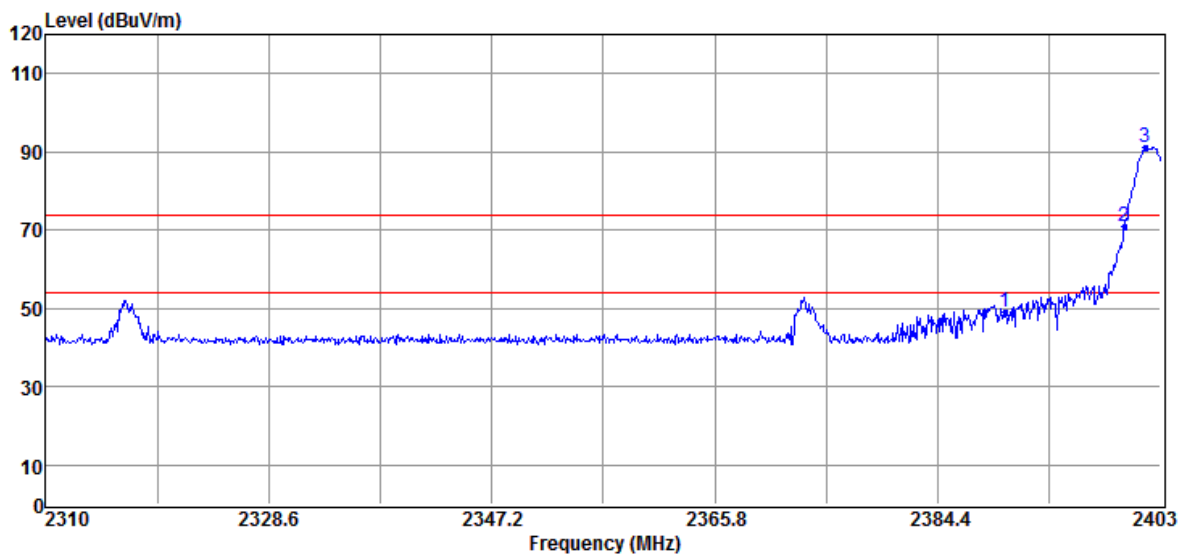
Operation Mode TX CH Low
Fundamental Frequency 2402 MHz
Temperature 25

Test Date 2019/06/17
Test By Barry
Humidity 60 %

VERTICAL:



HORIZONTAL:



No	Freq MHz	Reading dBuV	Factor dB	Level dBuV/m	Limit dBuV/m	Margin dB	Remark	Pol V/H
1	2390.00	59.95	-15.84	44.11	74.00	-29.89	Peak	VERTICAL
2	2400.00	81.54	-15.86	65.68	66.59	-0.91	Peak	VERTICAL
3	2402.44	102.45	-15.86	86.59	F	--	Peak	VERTICAL
1	2390.00	65.12	-15.84	49.28	74.00	-24.72	Peak	HORIZONTAL
2	2400.00	86.62	-15.86	70.76	71.00	-0.24	Peak	HORIZONTAL
3	2401.70	106.86	-15.86	91.00	F	--	Peak	HORIZONTAL

Remark:

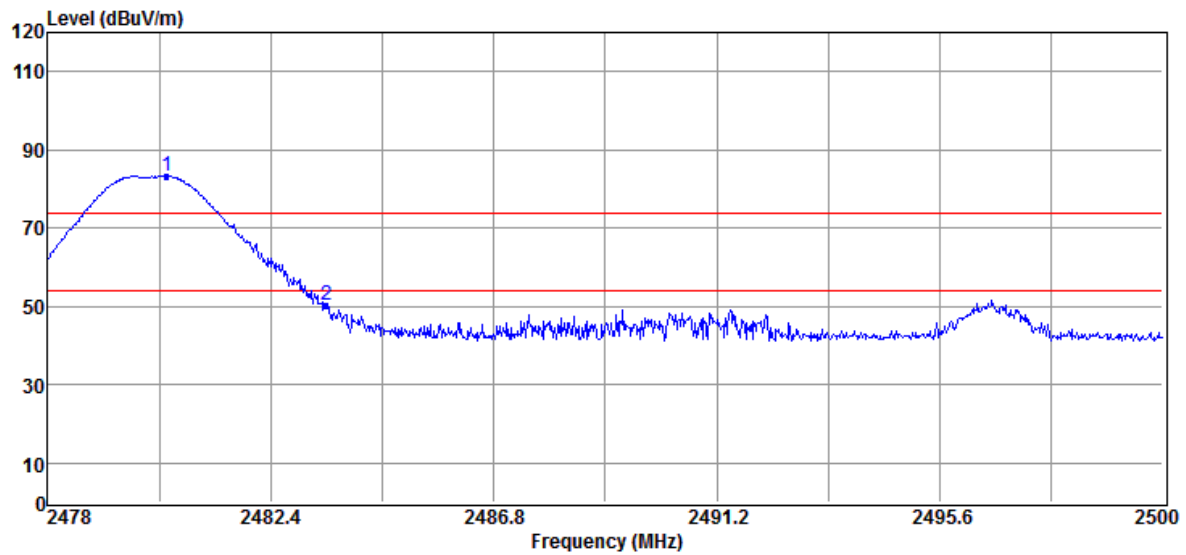
- 1 Measuring frequencies from the lowest internal frequency to the 10th of fundamental frequency
- 2 Field strength limits for frequency above 1000MHz are based on average limits. However, Peak mode field strength shall not exceed the average limits specified plus 20dB.
- 3 Measurement of data within this frequency range shown “ - ” in the table above means the reading of emissions are attenuated more than 20dB below the permissible limits or the field strength is too small to be measured.
- 4 Spectrum Peak mode IF bandwidth Setting : 1GHz- 26GHz, RBW= 1MHz, Sweep time= 200 ms., the VBW setting was 3 MHz.
- 5 Spectrum AV mode if bandwidth Setting : 1GHz- 26GHz, RBW= 1MHz, VBW= 10Hz, Sweep time= 200 ms.

Note: “F” denotes fundamental frequency

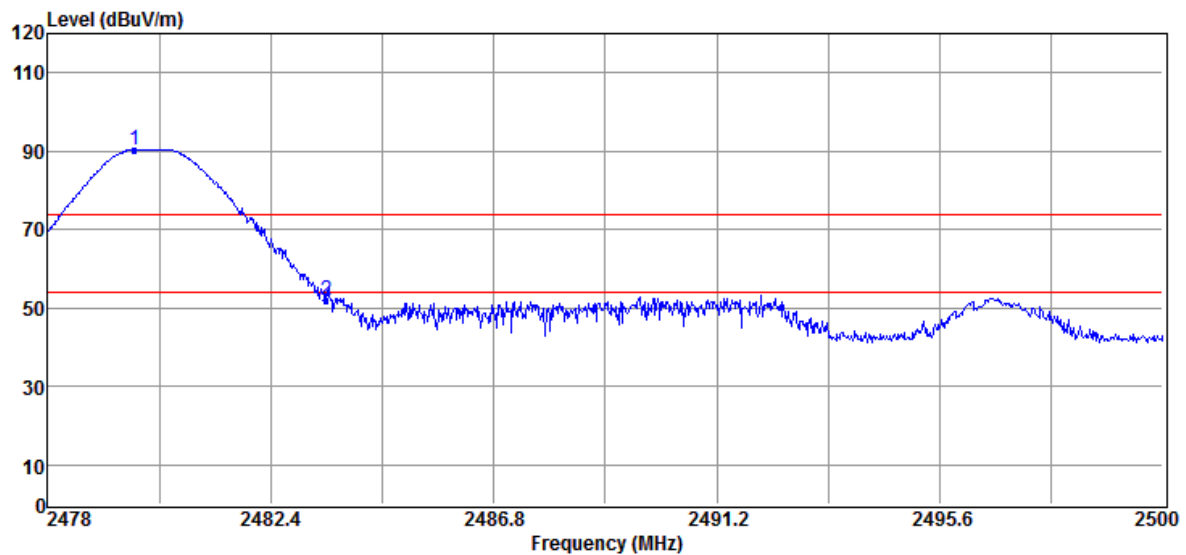
Operation Mode TX CH High
Fundamental Frequency 2480 MHz
Temperature 25

Test Date 2018/11/16
Test By Barry
Humidity 60 %

VERTICAL:



HORIZONTAL:



No	Freq MHz	Reading dBuV	Factor dB	Level dBuV/m	Limit dBuV/m	Margin dB	Remark	Pol V/H
1	2480.35	99.12	-15.84	83.28	F	--	Peak	VERTICAL
2	2483.50	66.31	-15.84	50.47	74.00	-23.53	Peak	VERTICAL
1	2479.72	106.24	-15.84	90.40	F	--	Peak	HORIZONTAL
2	2483.50	67.62	-15.84	51.78	74.00	-22.22	Peak	HORIZONTAL

Remark:

- 1 Measuring frequencies from the lowest internal frequency to the 10th of fundamental frequency
- 2 Field strength limits for frequency above 1000MHz are based on average limits. However, Peak mode field strength shall not exceed the average limits specified plus 20dB.
- 3 Measurement of data within this frequency range shown “ - ” in the table above means the reading of emissions are attenuated more than 20dB below the permissible limits or the field strength is too small to be measured.
- 4 Spectrum Peak mode IF bandwidth Setting : 1GHz- 26GHz, RBW= 1MHz, Sweep time= 200 ms., the VBW setting was 3 MHz.
- 5 Spectrum AV mode if bandwidth Setting : 1GHz- 26GHz, RBW= 1MHz, VBW= 10Hz, Sweep time= 200 ms.

Note: “F” denotes fundamental frequency

8 Antenna Requirement

8.1 Standard Applicable:

According to §15.203, Antenna requirement.

An intentional radiator shall be designed to ensure that no antenna other than that furnished by the responsible party shall be used with the device. The use of a permanently attached antenna or of an antenna that uses a unique coupling to the intentional radiator shall be considered sufficient to comply with the provisions of this Section. The manufacturer may design the unit so that a broken antenna can be replaced by the user, but the use of a standard antenna jack or electrical connector is prohibited. This requirement does not apply to carrier current devices or to devices operated under the provisions of Sections 15.211, 15.213, 15.217, 15.219, or 15.221. Further, this requirement does not apply to intentional radiators that must be professionally installed, such as perimeter protection systems and some field disturbance sensors, or to other intentional radiators which, in accordance with Section 15.31(d), must be measured at the installation site. However, the installer shall be responsible for ensuring that the proper antenna is employed so that the limits in this Part are not exceeded.

According to RSS-GEN 6.8 antenna requirement: The applicant for equipment certification shall provide a list of all antenna types that may be used with the transmitter, where applicable (i.e. for transmitters with detachable antenna), indicating the maximum permissible antenna gain (in dBi) and the required impedance for each antenna.

The test report shall demonstrate the compliance of the transmitter with the limit for maximum equivalent isotropically radiated power (e.i.r.p.) specified in the applicable RSS, when the transmitter is equipped with any antenna type, selected from this list.

For expediting the testing, measurements may be performed using only the antenna with highest gain of each combination of transmitter and antenna type, with the transmitter output power set at the maximum level. However, the transmitter shall comply with the applicable requirements under all operational conditions and when in combination with any type of antenna from the list provided in the test report (and in the notice to be included in the user manual, provided below). When measurements at the antenna port are used to determine the RF output power, the effective gain of the device's antenna shall be stated, based on a measurement or on data from the antenna's manufacturer.

The test report shall state the RF power, output power setting and spurious emission measurements with each antenna type that is used with the transmitter being tested.

For licence-exempt equipment with detachable antennas, the user manual shall also contain the following notice in a conspicuous location:

<p>This radio transmitter [enter the device's ISSED certification number] has been approved by Innovation, Science and Economic Development Canada to operate with the antenna types listed below, with the maximum permissible gain indicated. Antenna types not included in this list that have a gain greater than the maximum gain indicated for any type listed are strictly prohibited for use with this device.</p>

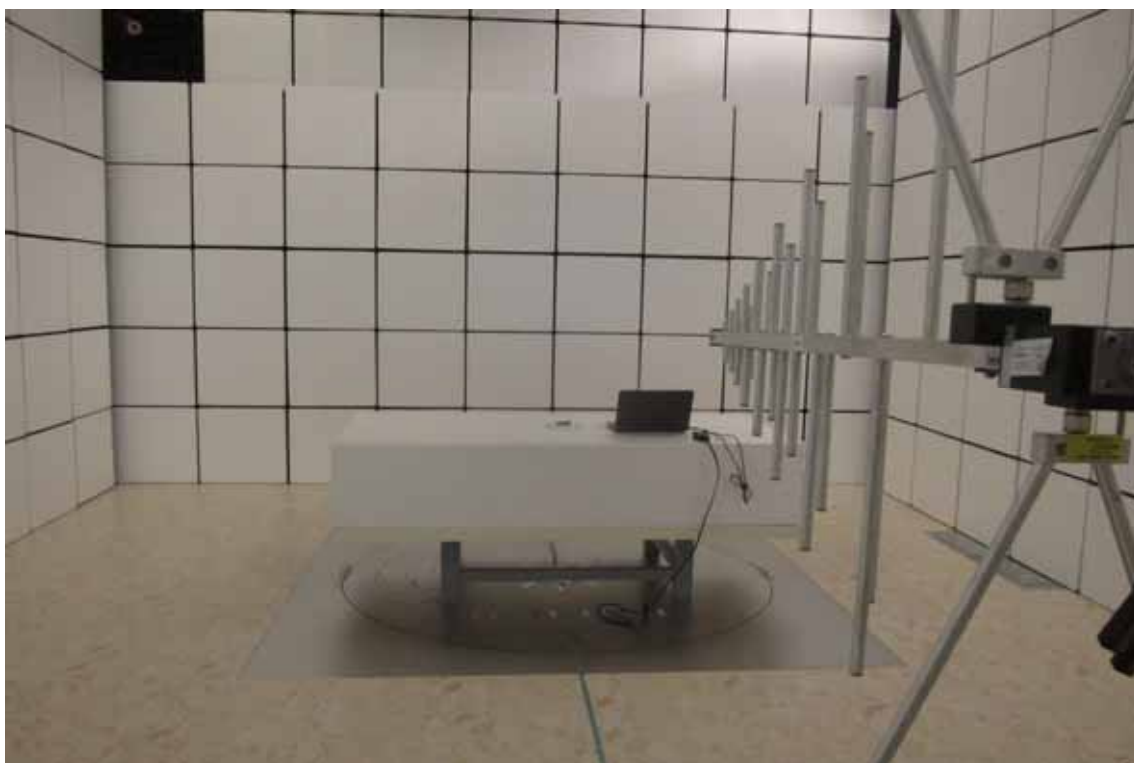
Immediately following the above notice, the manufacturer shall provide a list of all antenna types which can be used with the transmitter, indicating the maximum permissible antenna gain (in dBi) and the required impedance for each antenna type.

8.2 Antenna Connected Construction:

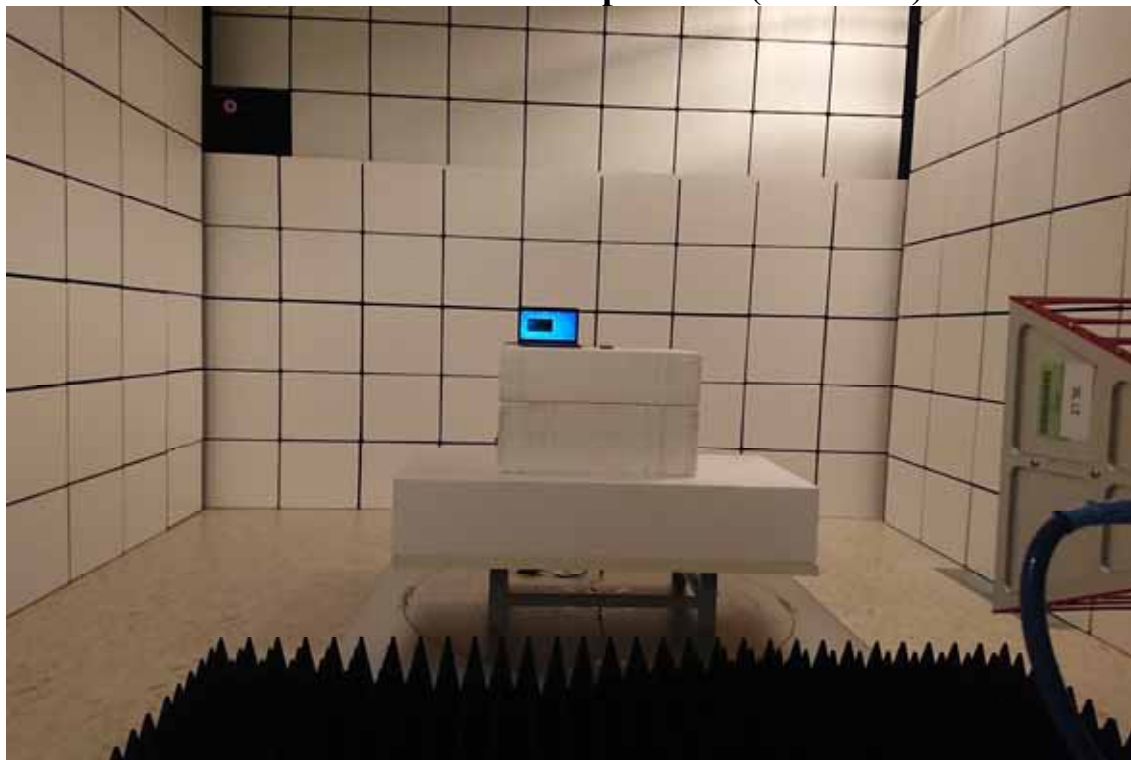
The directional gains of antenna used for transmitting is 2.0 dBi chip antenna no consideration of replacement. Please see EUT photo and antenna spec. for details.

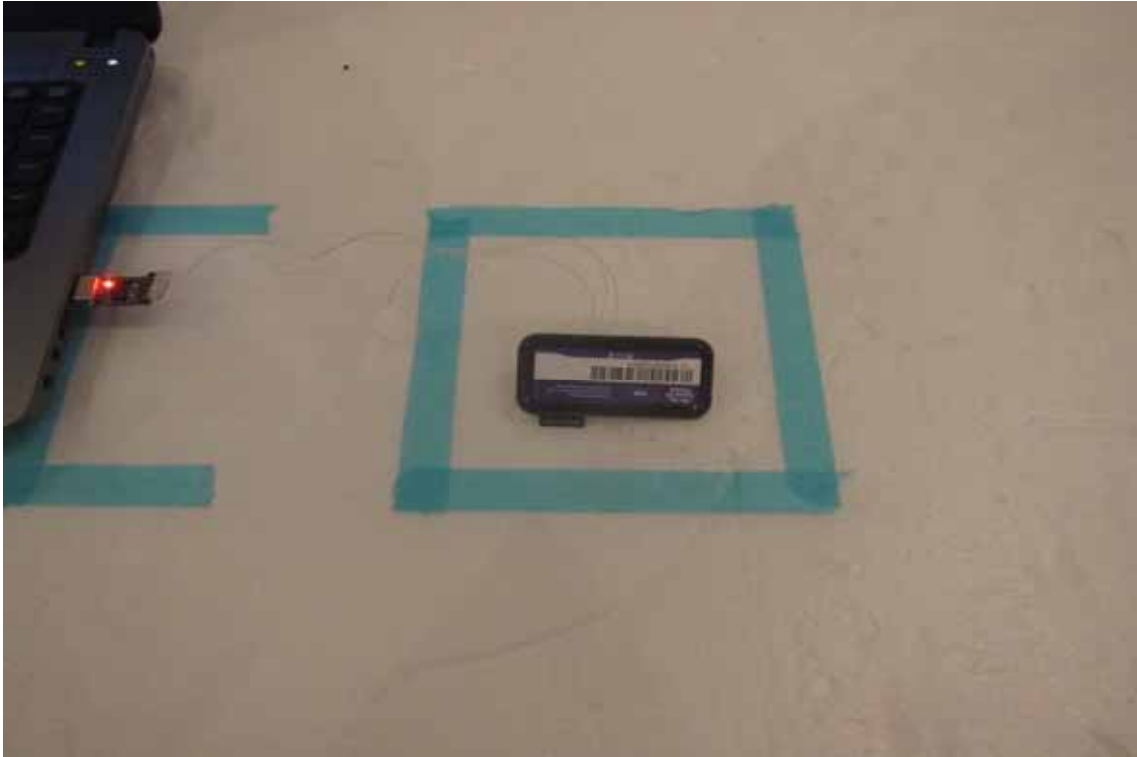
Photographs of Set Up

Radiated Emission Setup Photos (below 1G)



Radiated Emission Setup Photos (above 1G)





Photographs of EUT

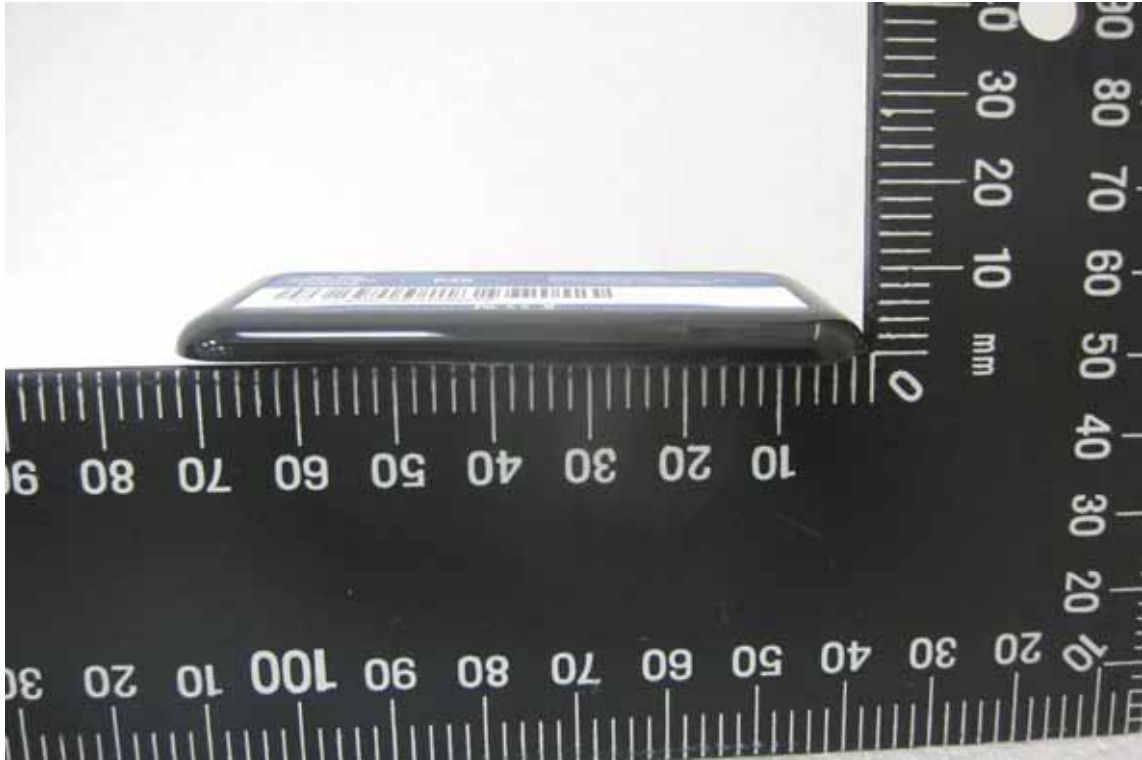
EUT 1



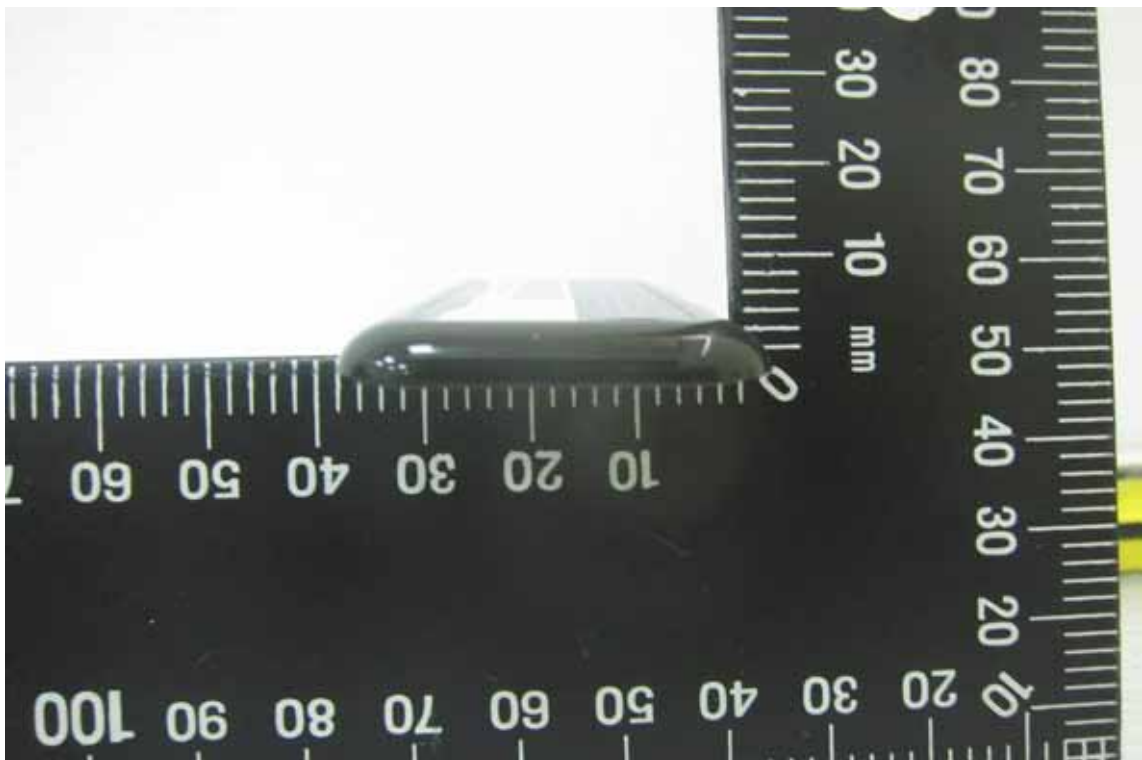
EUT 2



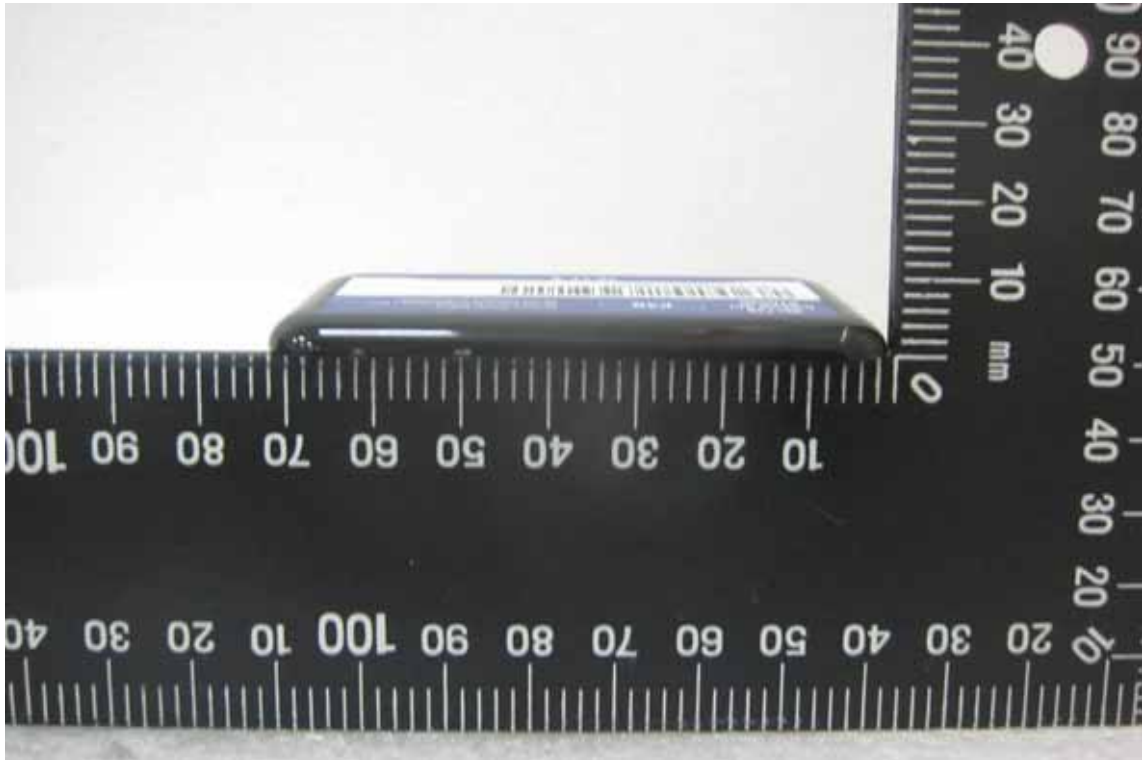
EUT 3



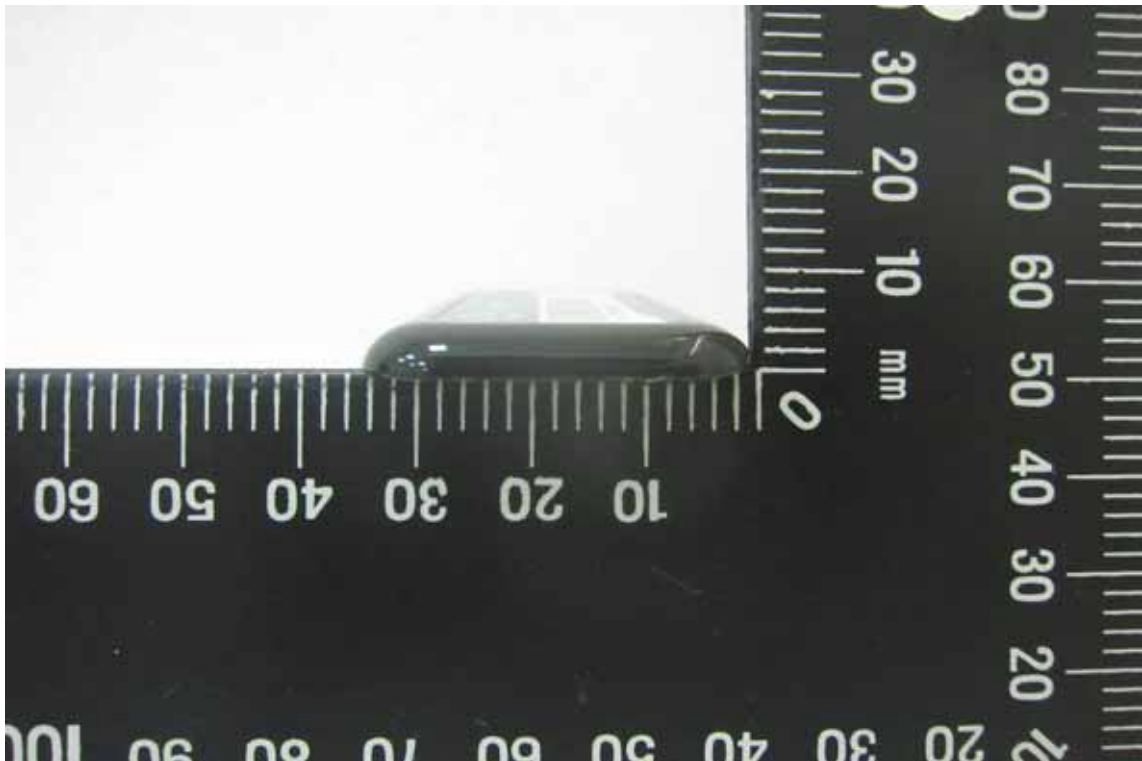
EUT 4



EUT 5



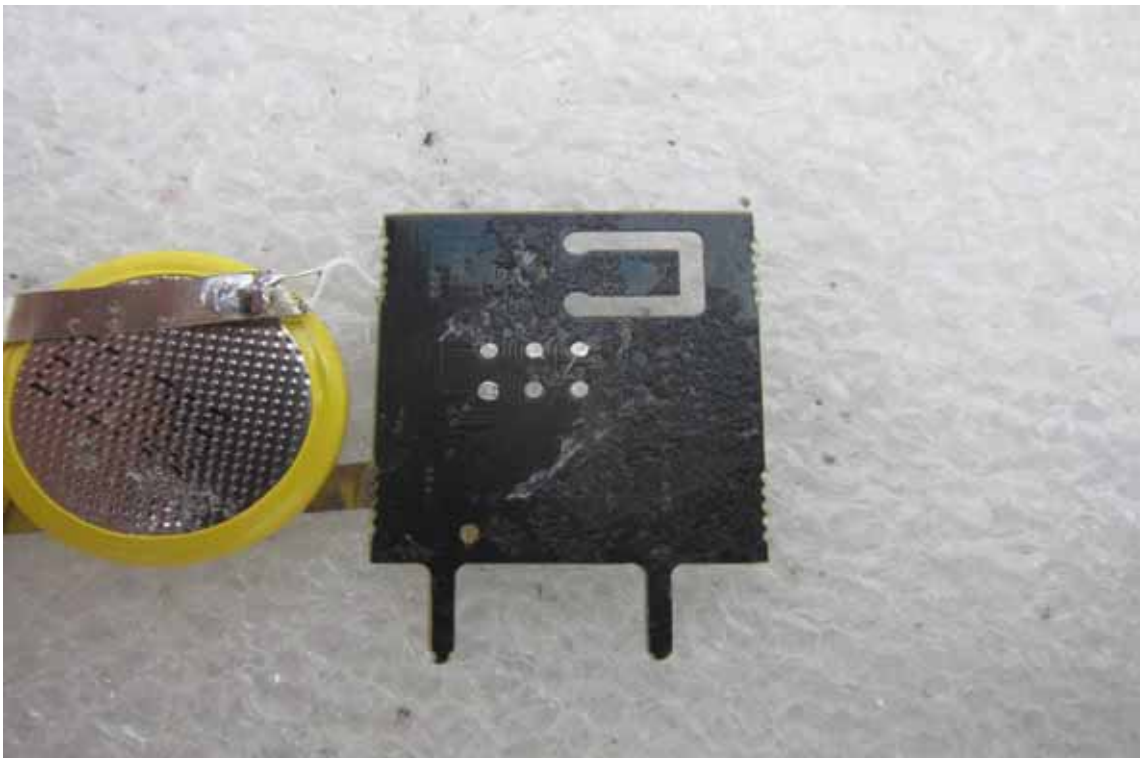
EUT 6



EUT 7



EUT 8



EUT 9



EUT 10



~ End of Report ~