



OFFICIAL AUDIO PARTNER OF MAJOR LEAGUE SOCCER

#FINDYOURGO

For full User Manual
+ other JLab products visit
JLABAUDIO.COM



3 MONTHS FREE
TIDAL

With purchase. Visit jlabaudio.com/tidal

Warm-up Your Headphones

Optional: Burn-in your audio equipment with the JLab Audio App
or access the burn-in method at: jlabaudio.com/burnin



JLab Audio + Burn-in Tool



US Compliance

FCC Information

FCC ID: 2AHYV-ESPORT2

This equipment has been tested and found to comply with the limits for a Class B digital device, pursuant to Part 15 of the FCC Rules. These limits are designed to provide reasonable protection against harmful interference in a residential installation. This equipment generates, uses and can radiate radio frequency energy and, if not installed and used in accordance with the instructions, may cause harmful interference to radio communications. However, there is no guarantee that interference will not occur in a particular installation. If this equipment does cause harmful interference to radio or television reception, which can be determined by turning the equipment off and on, the user is encouraged to try to correct the interference by one or more of the following measures:

- Reorient or relocate the receiving antenna.
- Increase the separation between the equipment and receiver.
- Connect the equipment into an outlet on a circuit different from that to which the receiver is connected.
- Consult the dealer or an experienced radio/TV technician for help.

If you cannot eliminate the interference, the FCC requires that you stop using your product. Changes or modifications not expressly by the party responsible for compliance could void the user's authority to operate the equipment.

This device complies with Part 15 of the FCC Rules. Operation is subject to the following two conditions: (1) this device may not cause harmful interference, and (2) this device must accept any interference received, including interference that may cause undesired operation.

Contact Us

If you're unsatisfied with your purchase, please contact us and we'll take care of you! You can contact our US based customer support team:

Website: jlabaudio.com/contact

Email: support@jlabaudio.com

Phone U.S.: +1 (405) 445-7219 (M-F 8am-5pm PT)

Phone U.K.: +44 (20) 3884 3322 (M-F 1600-0100 GMT)

Visit jlabaudio.com/warranty to initiate a return or exchange.

EU Compliance



PEAG LLC dba JLab Audio hereby declares that this device is in compliance with the essential requirements and other relevant provisions of the RED directive.

A copy of the EU Declaration of Conformity is available at jlabaudio.com/compliance

JLab Audio

2281 Las Palmas Drive, Suite 101, Carlsbad, CA 92011, USA



The symbol above indicates that this product and/or battery should not be disposed of with household waste. When you decide to dispose of this product and/or its battery, do so in accordance with local environmental laws and guidelines.

Battery Caution & Disposal Information

Please take care of your battery. Do not; disassemble, burn, puncture, crush or bend your battery. Improper operation of the battery may product smoke. In such an event, ventilate the area. Extinguish any flames with carbon dioxide, dry-powder fire extinguisher, or cover with sand or mud. Take care to avoid conditions of excessive moisture for prolonged periods and do not immerse. Do not expose to temperatures above 50°C/122°F. Charge battery fully before storage or if stored for longer than three months.

Disposal

At the end of its life, please take care to dispose of this product responsibly. Electronic products and batteries contain materials that can be harmful to the environment. Please do not dispose to unsorted waste. Take your electronic waste to a designated collection or recycling facility to be recycled properly. Your local council authority will be able to tell you where your nearest facilities are. There may be one at your local supermarket.



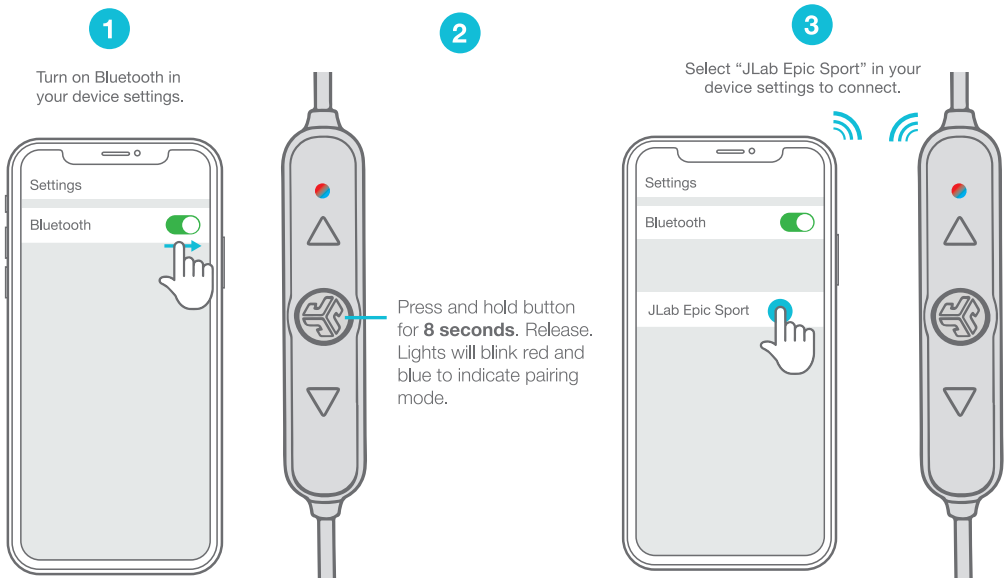
JLAB



EPICSPORT²
WIRELESS
FITNESS EARBUDS

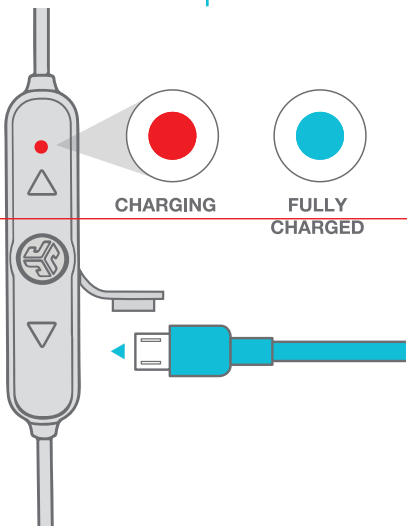
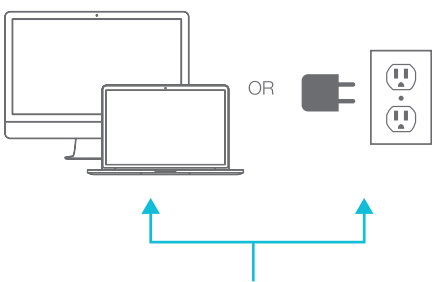
USER MANUAL

BLUETOOTH PAIRING



CHARGING

Open USB door and connect the cable to a computer or 5v (or less) power source to charge.



EQUALIZER MODES



SIGNATURE: 1 BEEP

JLab signature sound curve with amplified vocals and additional bass

BALANCED: 2 BEEPS

Even sound with no additional sound enhancements

BASS BOOST: 3 BEEPS

Amplified bass and sub-bass



VOICE PROMPTS

"HELLO"

Power is ON

"BATTERY FULL" = 100-75%

"BATTERY MEDIUM" = 75-25%

"LOW BATTERY" = Less than 25%

"READY TO PAIR"

Earbuds are ready to connect to your Bluetooth device.

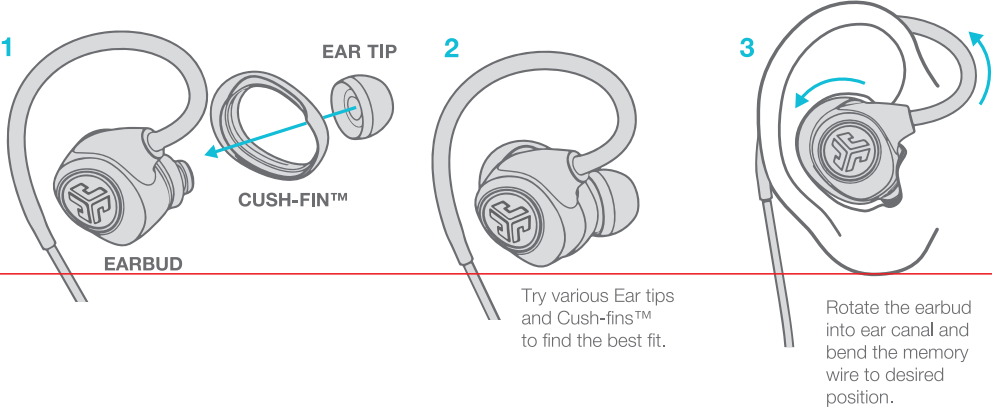
"YOU'RE CONNECTED"

Earbuds are connected to your Bluetooth device and ready for use.

"GOODBYE"

Power turning OFF

FITTING



FITTING

