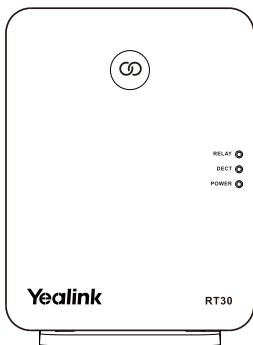




DECT Repeater RT30



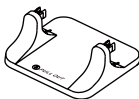
User Guide(V1.0)

Packaging Contents

The following items are included in your package:



RT30



Base Stand



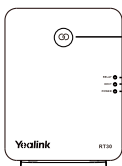
Power Adapter



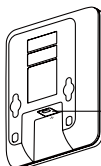
User Guide

Overview

Appearance Instructions



Program Key
RELAY LED
DECT LED
POWER LED



USB Port

LED Status

The DECT repeater has three LED indicators describing the repeater statuses. The following table provides instructions on repeater statuses and LED indications.

Status	POWER	DECT	RELAY
Not registered, auto search for base station (do not know which base station to register)	Green	Flashing red	Off
Search for base station (known which base station to register)	Green	Flashing yellow	Off
Registered to base station, ready for use	Green	Green/yellow	Off
Registered to base station, a handset is communicating with base station	Green	Green/yellow	Green
Registered to base station, 2 handsets are communicating with base station	Green	Green/yellow	Red
Error: ID duplication	Green	Alternately flashing red and green	Alternately flashing red and green
Check the repeater ID	Green	Green/yellow	Flashing green
Modify the repeater ID	Red	Green/yellow	Flashing red
Auto cascade registration	Yellow	Flashing green	Off
Manual cascade registration	Yellow	Green	Flashing red
De-register the repeater	Red	Red	Red

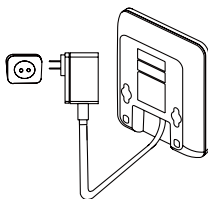
The DECT LED can indicate the DECT link quality. RT30 must be operated with this LED in green status. The following table provides instructions on DECT link quality and LED color.

DECT link	Color
Excellent to good	Green
Poor	Yellow

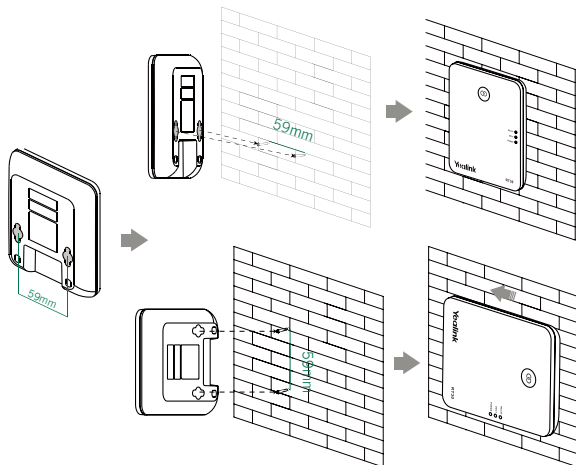
Installation

Connect the power for the repeater:

1. Connect RT30 to a power outlet using the included cable and USB power adapter.

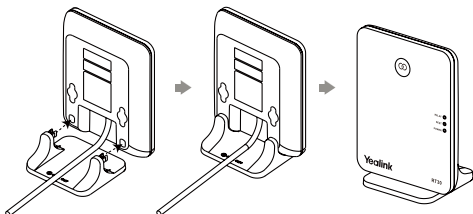


Wall mounting:



Attach the base stand:

1. Align the snap-fits with the corresponding holes and push forward, snapping them into the holes.



Introduction

Yealink DECT repeater RT30 is designed in accordance with Digital Enhanced Cordless Telecommunication (DECT) standard. It can be deployed to extend the range of the Yealink IP DECT phone (for example, W52P, W60B) to cover areas where reception was previously not available. All the usual handset functions are supported by the base station in the extended radio range.

The repeater, base station and cordless handset employ wireless connection. Signals are exchanged without acoustical and visual differences.

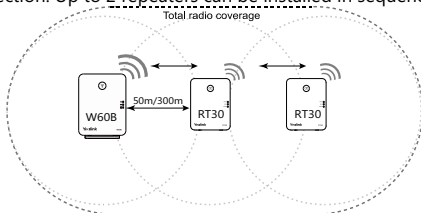
Multiple Repeaters

If the DECT link quality of RT30 is in excellent-to-good condition, up to 2 handsets can communicate with the base station.

The repeater can be used to extend the coverage range in all directions or in a single direction. The automatic handover process is seamless. If the repeater is placed correctly (overlapping the coverage area of the base station), the handsets can move freely within the total coverage area while on a call.

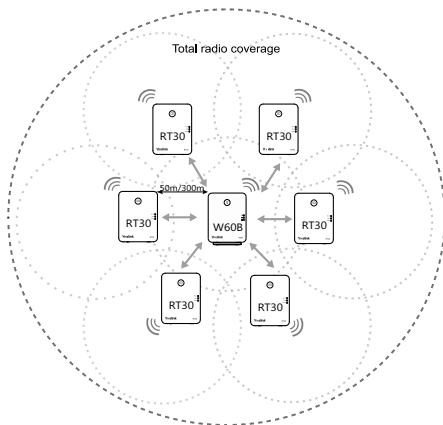
Cascade setup:

RT30 supports a sequential or "daisy chain" layout to extend coverage in a single direction. Up to 2 repeaters can be installed in sequence.



Star setup:

Up to 6 repeater can be registered to one base station to extend available reception range for all registered handsets. All repeaters must be installed within the base station coverage area (up to 300m in unobstructed outdoor areas and up to 50m inside buildings), as shown in the figure below.



Registering the Repeater

Registration: You can register the repeater to a base station to extend available reception range.

Cascade Registration: If you want to cascade setup 2 repeaters, you need to register the repeaters first and then perform cascade registration on the second repeater.

Modify the ID: After registering to the base station, every repeater has their own ID, they use ID to distinguish each other. If the IDs of two repeaters are duplicated, you need to modify the ID manually.

De-registration: Registration cannot be performed if the repeater is already registered to one base station. In this case, de-register the repeater before attempting registration.

Registration

If you want to register more than one repeater, we recommend that you put the base station and repeaters together and register the repeaters one by one, to prevent the ID duplication.

1. Plug the repeater into a AC outlet.

POWER LED is green and DECT LED is flashing red.

2. Set the handset in **RT30** repeater mode at the path: **Settings->System Settings->Repeater Mode**.
3. Set base station in registration mode (Long press paging key on the base station till the first LED flashes).
If base station is found, DECT LED will flash yellow.
When DECT LED is green/yellow, registration to base station is successful.

Cascade Registration

Up to 2 repeaters can be registered to the base station in a cascade setup. Before performing the cascade registration, you should register the 2 repeaters first.

When performing cascade registration, we recommend you that put the repeaters together and make the repeaters stay away from the base station. The repeater supports automatic or manually cascade registration.

Auto Cascade Registration

1. Long press the program key on second repeater about 3 seconds.
The second repeater starts searching for the first repeater, POWER LED is yellow and DECT LED is flashing green.
When POWER LED is green and DECT LED is green/yellow, auto cascade registration is successful.

Manually Cascade Registration

1. On first repeater:
 - a. Check the ID: Press the program key. And the ID is indicated by the number of times the RELAY LED flashes green.
2. On second repeater:
 - a. Long press the program key about 3 seconds.
POWER LED is yellow and DECT LED is flashing green.
 - b. Enter the first repeater's ID by pressing the program key. The ID will increase by one each time the program key is pressed.
POWER LED is yellow and DECT LED is green. And the number of times the RELAY LED flashes indicates the entered ID.
 - c. Press the program key about 3 seconds to confirm the ID.
The second repeater starts searching for the first repeater, POWER LED is green and DECT LED is flashing yellow.
When POWER LED is green and DECT LED is green/yellow, manually cascade registration is successful.

Modify the ID

1. Press the program key to check the ID.
2. Long press the program key about 3 seconds to enter the ID modifying mode.
POWER LED is red and DECT LED is green/yellow.
3. Enter the first repeater's ID by pressing the program key. The ID will increase by one each time the program key is pressed.
The number of times the RELAY LED flashes indicates the entered ID.
4. Long press the program key about 3 seconds to confirm the ID.
The repeater will re-register to the base station/repeater.

De-registration

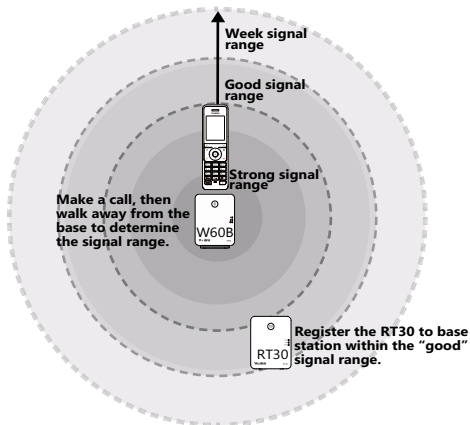
1. Long press the program key and reconnect the power adapter.
2. Hold the program key until the three LEDs is red.

De-registration is successful, and the repeater will start to search the base

Placement

To achieve optimum performance for the repeater, it is important to find a good location.

1. Hold the handset and stand near the base.
2. Make a call, and carry the handset away from the base.
3. Make a note where you start to hear noise on the line, which indicates the signal is getting weaker.



The optimum location for the repeater is as far from the base as possible while still maintaining a good signal, or just inside the location where the noise became noticeable.

Here are a few tips for placing repeaters:

- Choose a raised position for both the base station and repeater wherever possible.
- When positioning the repeater, avoid obstacles that can interfere with radio transmission such as thick wall and metal structures that may be in the coverage area between the base station and repeater.
- Avoid interference from other electrical appliances such as micro-wave ovens, Hi-Fi equipment, computers etc.
- Keep a minimum of 10 meters between multiple repeaters to avoid coverage area overlapping.

Part 15 FCC Rules

Any Changes or modifications not expressly approved by the party responsible for compliance could void the user's authority to operate the equipment.

This device is compliant with Part 15 of the FCC Rules. Operation is subject to the following two conditions:

1. This device may not cause harmful interference, and
2. This device must accept any interference received, including interference that may cause undesired operation.

IC Rules

"This product meets the applicable Innovation, Science and Economic Development Canada technical specifications. / Ce produit répond à la innovation, des sciences et de Développement économique Canada spécifications techniques applicables."

"The Ringer Equivalence Number (REN) indicates the maximum number of devices allowed to be connected to a telephone interface. The termination of an interface may consist of any combination of devices subject only to the requirement that the sum of the RENs of all the devices not exceed five. / Le nombre équivalent des sonneries (REN) indique le nombre maximal de terminaux qui peuvent être raccordés à une interface téléphonique. La terminaison d'une interface peut consister en une combinaison de dispositifs, à la seule condition que la somme des REN de tous les dispositifs ne dépasse pas cinq."

Industry Canada Notices and Other Information

This product meets the applicable Industry Canada technical specifications.

Note

This device complies with Industry Canada licence-exempt RSS standard(s). Operation is subject to the following two conditions: (1) this device may not cause interference, and (2) this device must accept any interference, including interference that may cause undesired operation of the device.

Privacy of communications may not be ensured when using this product. Some wireless telephones operate at frequencies that may cause interference to nearby TVs and VCRs. To minimize or prevent such interference, the base of the wireless telephone should not be placed near, or on top of, a TV or VCR.

This will often reduce, or eliminate, interference.

This Class B digital apparatus complies with Canadian ICES-003.

Le présent appareil est conforme aux CNR d'Industrie Canada applicables aux appareils radio exempts de licence. L'exploitation est autorisée aux deux conditions suivantes: (1) l'appareil ne doit pas produire de brouillage, et (2) l'utilisateur de l'appareil doit accepter tout brouillage radioélectrique subi, même si le brouillage est susceptible d'en compromettre le fonctionnement.

CAUTION

Any changes or modifications not expressly approved by the party responsible for compliance could void the user's authority to operate this product.

RF Exposure Warning

This product complies with IC radiation exposure limits set forth for an uncontrolled environment.

To comply with IC RF exposure requirements, the product must be installed and operated 20 cm (8 inches) or more between the product and all persons body.

This product may not be collocated or operated in conjunction with any other antenna or transmitter.

RF Exposure Warning

This product complies with FCC radiation exposure limits set forth for an uncontrolled environment.

To comply with FCC RF exposure requirements, the product must be installed and operated 20 cm (8 inches) or more between the product and all person's body.

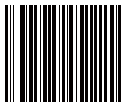
This product may not be collocated or operated in conjunction with any other antenna or transmitter.

About Yealink

Yealink (Stock Code: 300628) is a global leading unified communication (UC) terminal solution provider that primarily offers video conferencing systems and voice communication solutions. Founded in 2001, Yealink leverages its independent research and development and innovation to pursue its core mission: "Easy collaboration, high productivity." The company's high-quality UC terminal solutions enhance the work efficiency and competitive advantages of its customers in over 100 countries. Yealink is the world's second-largest SIP phone provider and is number one in the China market.

Technical Support

Visit Yealink WIKI (<http://support.yealink.com/>) for the latest firmware, guides, FAQ, Product documents, and more. For better service, we sincerely recommend you to use Yealink Ticketing system (<https://ticket.yealink.com>) to submit all your technical issues.



RT30

YEALINK(XIAMEN) NETWORK TECHNOLOGY CO.,LTD.

Web: www.yealink.com

Addr: 309, 3th Floor, No.16, Yun Ding North Road,
Huli District, Xiamen City, Fujian, P.R. China

Copyright©2018 YEALINK(XIAMEN) NETWORK
TECHNOLOGY CO.,LTD.All rights reserved.