



nitro5GO

User Manual

Overview



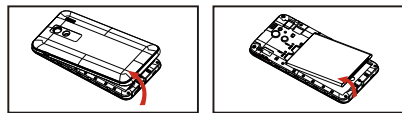
- 1 Front Camera
- 2 Volume Keys
- 3 Power Key
- 4 Back
- 5 Home
- 6 Menu
- 7 Rear Camera
- 8 Flash
- 9 Speaker

SIM Card Installation

A SIM card contains your phone number and other necessary data. Your device has dual SIM slots that both supports 3G(WCDMA) SIM cards.

To Install the SIM Card

1. Make sure the device is turned off and the front facing down. Hold the firmly and use the notch at the bottom corner to loosen the cover. Use material with a hard, thin edge such as your fingernail or a credit card to carefully run along the seam to loosen, then lift the cover until it detaches completely.



2. Remove the battery if it is in. Locate the SIM card slot and insert the proper SIM card into the proper slot. For more information on SIM card installation, check out the included **SIM Card & Micro SD Card Installation Guide**.
3. To turn on/off a SIM card go to Settings > SIM management, then slide the SIM card sliders. To turn on/off a SIM card's data connection, go to Settings > SIM management, click on the "Data connection" option, and select a SIM card that has 3G capability.

Keys/Touch Points

Power Key: To power on/off it, press and hold power key for a few seconds on top of your phone. When it is ON, press the power key once to activate or deactivate the screen.

Home key (○): Touch the key to return to the home screen. In idle screen, touch and hold the key to view recently accessed features.

Options key(□): In standby mode, touch the key to set wallpaper, manage apps, access to system settings. Touch it to view menu options.

Back key (◀): Touch to go back to the previous menu.

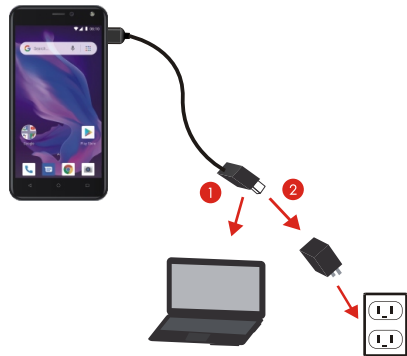
Charging battery

New batteries are shipped partially charged. Before using your device, install and charge the battery. Batteries perform best after several full charge / discharge cycles.

Charging Your battery

- Please charge the battery using the following methods:
1. Charge the phone by connecting it to a computer via the USB cable.
 2. Connect the USB cable to the phone and the AC adapter. Plug the AC adapter into an electrical outlet to start charging.

As the battery charges, an icon will appear in the status bar of the home screen. When the battery is fully charged, a full battery icon appears on screen.



Warning:

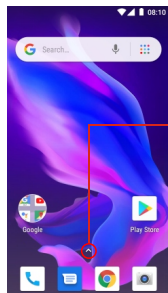
- Do not remove the battery while the device is charging.
- Use only the AC adapter & USB cable provided with your device.

Note: For safety, the battery will stop charging if in danger of overheating.

Audio Profile/Sleep Mode

Intelligent keyboard

From the home screen, touch "APP Menu" & select "Settings". Go to "Audio profiles" and change the audio settings by clicking on the "Settings" icon located next to the "General" option. For your Convenience, you may also select Silent.



App Menu

Sleep Mode

Turn on sleep mode to save your battery power.

1. On the home screen, touch "APP Menu" & select "Settings"
2. Select "Security & location" then select "Screen lock"
3. Select "Sleep" and choose a time interval from the list.

Schedule Power On/Off

1. On the home screen, touch the "APP Menu" & select "Settings"
2. Select "Settings->System->Date&time"
3. Click on the time to change the time and day for the phone to turn on/off automatically.

Screen Lock

1. On the home screen, touch the "APP Menu" & select "Settings"
2. Select "Security & location" then select "Screen lock"
3. Select the desired type of lock & follow the prompts to set up.

Phone Features

Description Icons

Icons	Descriptions	Icons	Descriptions
	Shows the phone's network signal strength.		Show the phone's battery capacity.
	Speaker has been activated.		You have unread SMS.
	Call on hold		USB storage Turned on.
	The ringing type is set on Vibration.		Flight Mode
	3G network in use.		2G network in use.
	You have missed calls.		A clock alarm is active.
	In call		Bluetooth ON

Main Menu & Its Functions

Select to enter the main menu... Allow you to view a list of features available in your phone.

1. **Clock**
Allow you to set the Alarm from Clock.
2. **Chrome**
Browse the internet. Search engine-default set as Google.
3. **Calculator**
Allow you to make tedious calculations quickly.
4. **Calendar**
View the calendar & add events.
5. **Camera**
Allow you to click pictures anytime you want. Your **nitro5GO** has a 2 MP High Definition camera with LED Flash supporting many special features like Auto Focus & Face Detection which ensures you always click good quality of pictures and stores them under the Gallery folder. In Camera, easily choose Camcorder to record Video Files.
6. **Contacts**
To see your list of Contacts. Access phonebook through this function.
7. **Email**
Allows you set up your POP/IMAP email accounts.

Phone Features

8. Gallery

Allow you to save & view photos & videos.

9. Play Store

Log in to your Gmail account to view all the applications & download from thousands of applications available under the Google™ Market called Play Store.

Note:

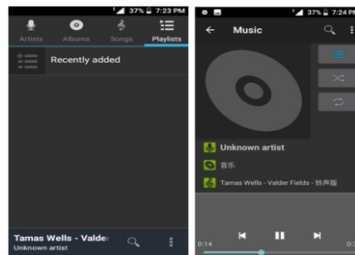
To use this app please connect to an internet connection.

10. Messages

Allow you to view messages sent & received as a thread.

11. Music

View the list of songs available in your phone. View the artists, albums, playlists & more.



12. Phone

Allow you to make quick outgoing calls.

13. Files

You could install the files in APK format & also view your files.

14. MAX SIM KIT

This service is provided by the operator. It provides many types of personalized message services.

Phone calls/Texting

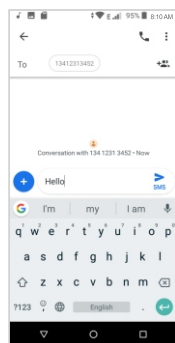
To Make Phone Calls

1. Touch the phone icon.
2. Select SIM1 card or SIM2 card.
3. Click on a contact from your contact list to make a call.



Composing text messages

Maxwest automatically corrects and suggests words as you type.

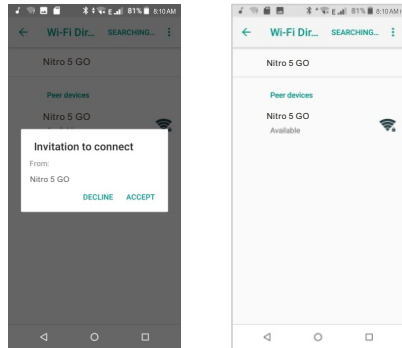


Cut, Copy and Paste
Touch and hold text content to bring up the magnifying glass, and then slide your finger to move the insertion points. Then choose to cut, copy, or paste. It is very easy to copy text from web pages, email, or text messages.

WLAN

Turn on WLAN

Maxwest supports WLAN Direct which allows Android™ 4.1 or later devices with the appropriate hardware to connect directly to each other via WLAN without an intermediate access point. Using the API, you can discover and connect to other devices when each device supports WLAN Direct, then communicate over a speedy connection across distances much longer than a Bluetooth connection. This is useful for applications that share data among users, such as a multiplayer game or file sharing.

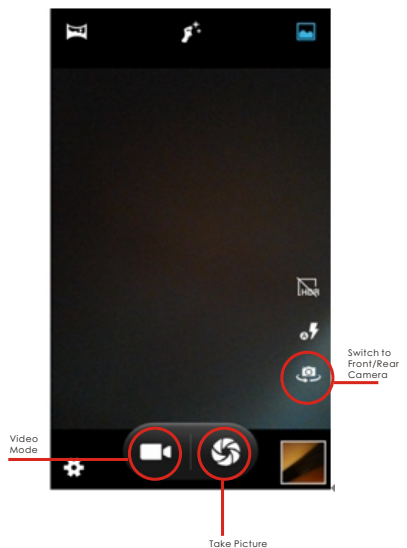


- a. Enter "Settings" interface & Click "More" in WIRELESS & NETWORKS. Then click "WLAN direct" to access Wi-Fi direct feature. Then turn on the feature.
- b. After turning on the feature click "Search" at the bottom and it will display the available devices:
- c. Click "Android_7e33" (in this case specifically) and it will give you option to connect:
- d. Click "Connect" to connect and it will pop up an interface to confirm like below:
- e. Click "OK" and the devices will be connected

Camera

Camera

Capture images or record videos and share with family and friends!



Connecting to E-mails

Log into your e-mail accounts.

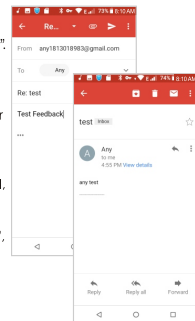
You may log-in to your e-mail accounts from the phone to access your e-mails.

From the Home screen select "Email". Enter your email address, password and tap "Next". Select which type of email account you are setting up and complete settings.(POP3 / IMAP / Microsoft Exchange Account)

You will need to enter your user name, password, and server information depending on the type of email account or you can change the settings by tapping "Manual setup" at the top right corner screen. Tap "Next" and select "OK" to accept the activation notification.

Compose new:

1. Press MENU & select "Compose".
2. Add recipients by typing a name or email address in the "To" field. Matching contacts will appear. Select a recipient or continue typing in the email address to send to multiple contacts.
3. Once finished typing the mail, select "Send", "Save as draft", or "Discard".
4. The reply tab contains "Reply", "Reply all" and "Forward" options.



Delete message:

1. Go to Inbox to display messages.
2. Touch & hold the message you want to delete.
3. Select "Delete".

File Transfer

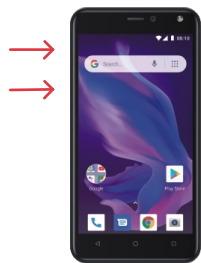
Connecting Smartphone to PC

Connect the enclosed Micro USB to USB cable to your smartphone and computer. Once connected successfully, on your phone, slide the top menu down and click on "USB connected", then, press "Turn on USB storage" button. A new storage named "**nitro5GO**" will appear on your "My Computer". Click in it to review files in the smartphone and /or to transfer documents between devices. When finished, press "Turn off USB storage" button on phone to disconnect. Note: Photos taken with the camera will be saved under the "DCIM" folder. Screenshots captured will be saved under "Pictures" folder. Put Music files in the "Music" folder for the files to be played properly.



Screen Capture

Press Volume(-) and power button at the same time to capture "Screenshot". All captured screenshot will be saved under gallery.



Warning

■ Any changes or modifications not expressly approved by the party responsible for compliance could void the user's authority to operate the equipment. This device complies with part 15 of the FCC Rules. Operation is subject to the following two conditions:

(1) this device may not cause interference

(2) this device must accept any interference, including interference that may cause undesired operation of the device.

Note: This equipment has been tested and found to comply with the limits for a Class B digital device, pursuant to part 15 of the FCC rules. These limits are designed to provide reasonable protection against harmful interference in a residential installation. This equipment generates, uses and can radiate radio frequency energy and, if not installed and used in accordance with the instructions, may cause harmful interference to radio communications. However, there is no guarantee that interference will not occur in a particular installation. If this equipment does cause harmful interference to radio or television reception, which can be determined by turning the equipment off and on, the user is encouraged to try to correct the interference by one or more of the following measures:

- Reorient or relocate the receiving antenna.
- Increase the separation between the equipment and receiver.

-Connect the equipment into an outlet on a circuit different from that to which the receiver is connected.

--Consult the dealer or an experienced radio/TV technician for help.

■ SAR tests are conducted using standard operating positions accepted by the FCC with the device transmitting at its highest certified power level in all tested frequency bands, although the SAR is determined at the highest certified power level, the actual SAR level of the device while operating can be well below the maximum value, in general, the closer you are to a wireless base station antenna, the lower the power output.

■ Before a new device is available for sale to the public, it must be tested and certified to the FCC that it does not exceed the exposure limit established by the FCC. Tests for each device are performed in positions and locations as required by the FCC.

■ For body worn operation, this device has been tested and meets the FCC RF exposure guidelines when used with an accessory designated for this product or when used with an accessory that contains no metal and that positions the handset a minimum of 10 mm from the body.

Non-compliance with the above restrictions may result in violation of RF exposure guidelines.



@2019 Maxwest and the Maxwest logo are registered trademarks of their registered owners. Google, Android, Google Play and other marks are trademarks of Google LLC.