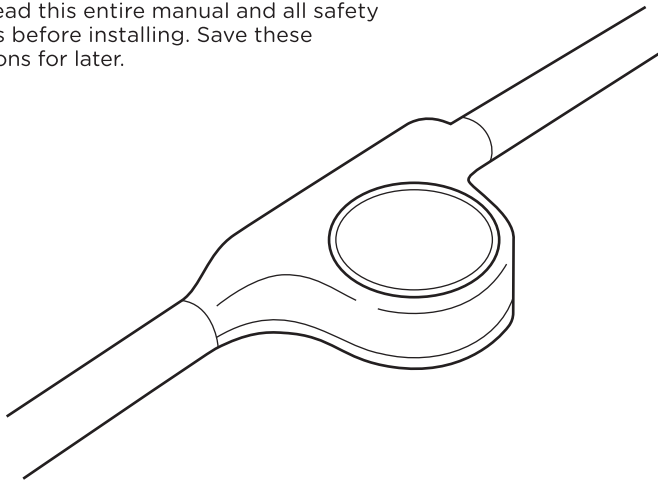


Indoor Accent
Spectrum™ Wall Lights

Congrats on your Enbrighten VIBE Spectrum Wall Lights! These dynamic LEDs showcase your lifestyle with endless customizations and smart controls using the free Enbrighten app.

Please read this entire manual and all safety warnings before installing. Save these instructions for later.



Model: 85832

Thank you for your purchase!

Instructions
made easy



Read instructions or watch
an easy-to-follow video.

Scan code or visit
enbrightenme.com/85832i

Register your
product



Receive exclusive deals and
register your product.

Scan code or visit
byjasco.com/deals.



Discover more
innovative lighting at
www.enbrightenme.com.

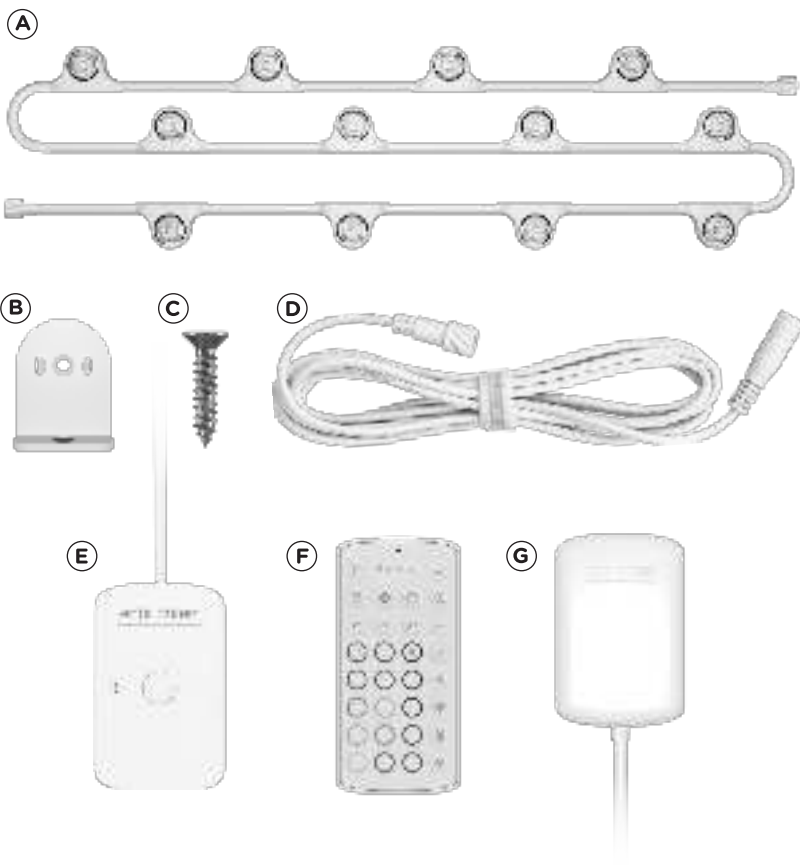


Like our product?
Leave a review
on your favorite
retailer website or
amazon.com.



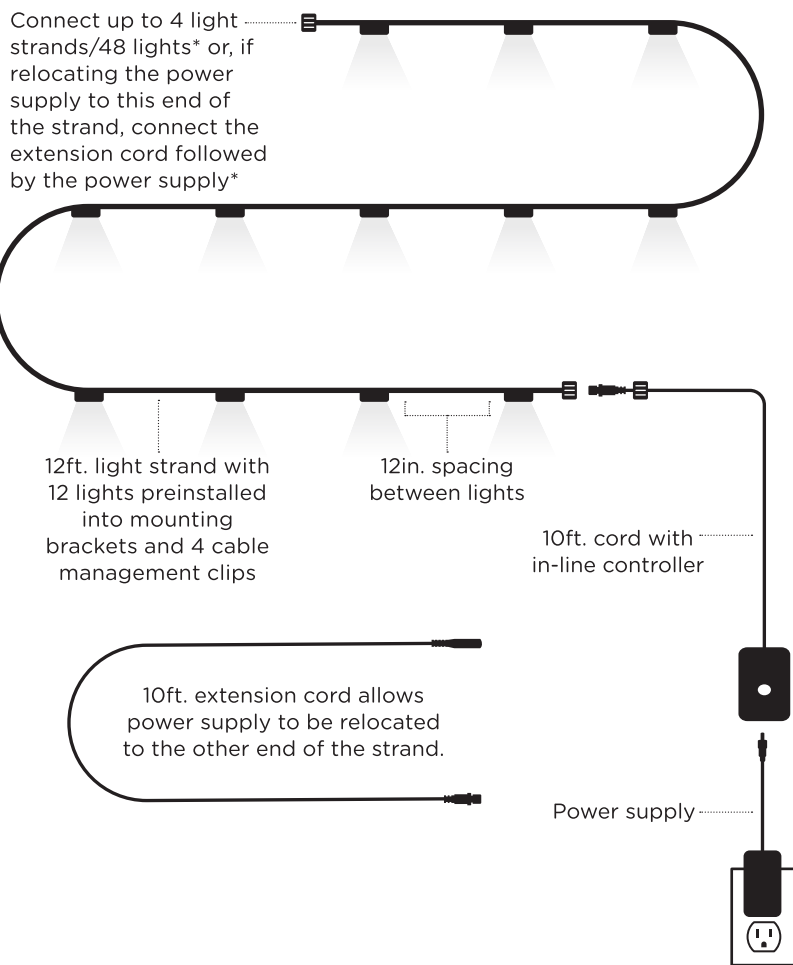
Having problems?
Let us know how
we can help.
Call 1-800-225-0653,
Monday-Friday

INSIDE THE BOX



- A. 12ft. light strand with 12 RGBWWIC light pucks x1 (Includes 4 cable management clips)
B. Self-adhesive mounting brackets x12
C. Mounting screws x24
D. 10ft. extension cord x1
E. 10ft. cord with in-line controller with 3ft. power cord x1
F. RF remote x1 (includes 2 AAA batteries)
G. 9W/24V power supply x1

LIGHTING SETUP



*Additional Enbrighten Wall Light Extension Strands (model# 85839) sold separately

Test the lights

Plug your lights into an outlet. Press the pairing button on the in-line controller a few times to ensure all the LEDs work. Unplug the lights and follow the instructions below to pair your lights with the app.

Remotely operate your smart lights with the easy-to-use Enbrighten app. Follow the available instructions and resources to set up your smart device.

Download the app

Scan the QR code or search Enbrighten on the Apple App Store or on Google Play

Download on the App Store GET IT ON Google Play

Setup and installation

1. Create an account in the Enbrighten app

2. Install the Spectrum Wall Lights

Setup and installation

3. Plug the Spectrum Wall Lights into the outlet

4. Add devices, control the Spectrum Wall Lights from anywhere and create schedules

Voice control

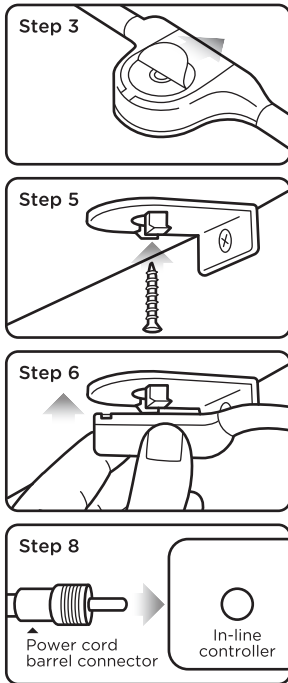
Voice control works with Amazon Alexa or Google Assistant

works with alexa works with Google Home

Select "Support" in the Enbrighten app or follow the steps in the Amazon Alexa or Google Home app to connect your Enbrighten account

INSTALLATION

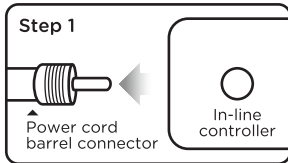
- Uncoil the light strand (A) and plan your installation. Make sure an outlet is within reach. The power cord can be attached to either end of the light strand (see Moving the Power Cord section).
- Attach each bracket (B) to the back of LED pucks — press until they click into place. **IMPORTANT: Steps 3-7 should be done one LED puck at a time.**
- Peel the paper backing from the tape and firmly press the combined LED puck and bracket onto the mounting surface.
- Use a flathead screwdriver to gently pop the LED puck out of the bracket.
- Use a #1 Phillips-head screwdriver to secure the bracket with the included screw (C).
- Reattach the LED puck to the secured mounting bracket.
- Repeat the process for each LED puck.
- Insert the power cord's barrel connector into the in-line controller.
- Plug the power cord into a 120V/60Hz electrical outlet.



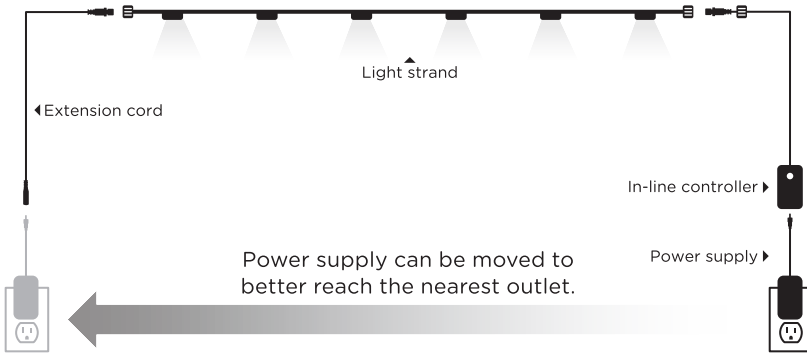
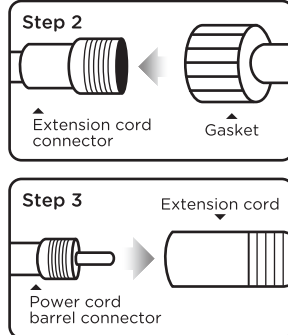
MOVING THE POWER CORD

The light strand can be powered from either end. To move the power cord to the opposite end of the light strand:

- Unplug the power cord's barrel connector from the controller. The controller does not move with the power cord to the other end of the light strand.

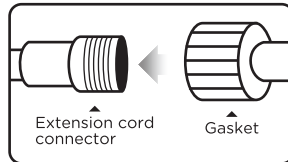


- Insert the 10ft. extension cord's connector into the other end of the light strand, then screw on the gasket to secure the connection.
- Insert the power cord's barrel connector into the extension cord.



LINKING ADDITIONAL STRANDS

- Link up to four light strands for a total of 48 puck lights.
- Unplug the power supply.
 - Install each strand following the instructions above.
 - Loosen the gasket on the end of the first strand and plug in the new set of lights.
 - Screw on the gasket to secure the connection.
 - Plug in the power supply.



FCC STATEMENT

Suppliers Declaration of Conformity | Model #: 85832 | Jasco Products Co., 10 E. Memorial Rd., Oklahoma City, OK 73114, www.byjasco.com

This device complies with Part 15 of the FCC and Industry Canada license-exempt RSS standards. Operation is subject to the following two conditions: (1) this device may not cause harmful interference, and (2) this device must accept any interference received, including interference that may cause undesired operation.

FCC NOTE: The manufacturer is not responsible for any radio or TV interference caused by unauthorized modifications to this equipment. Such modifications could void the user's authority to operate the equipment.

NOTE: This equipment has been tested and found to comply with the limits for a Class B digital device, pursuant to Part 15 of the FCC Rules. These limits are designed to provide reasonable protection against harmful interference in a residential installation. This equipment generates, uses and can radiate radio frequency energy and, if not installed and used in accordance with the instructions, may cause harmful interference to radio communications. However, there is no guarantee interference will not occur in a particular installation. If this equipment does cause harmful interference to radio or television reception, which can be determined by turning the equipment off and on, the user is encouraged to try to correct the interference by one or more of the following measures:

- Reorient or relocate the receiving antenna.
- Increase the separation between the equipment and receiver.
- Connect the equipment into an outlet on a circuit different from that to which the receiver is connected.
- Consult the dealer or an experienced radio/TV technician for help.

Important note: To comply with the FCC RF exposure compliance requirements, no change to the antenna or the device is permitted. Any change to the antenna or the device could result in the device exceeding the RF exposure requirements and void user's authority to operate the device.

CAN ICES-3(B)/NMB-3(B)



MANUAL CONTROL

- | | |
|----------------------|-----------------------|
| 1. Soft white, 2200K | 11. Pink |
| 2. Warm white 3000K | 12. Orange |
| 3. Daylight 5000K | 13. Teal |
| 4. Color fade | 14. Christmas |
| 5. Stop color fade | 15. July 4th |
| 6. Red | 16. Rainbow |
| 7. Green | 17. Halloween twinkle |
| 8. Blue | 18. Twinkle rainbow |
| 9. Yellow | 19. OFF |
| 10. Purple | |

WARRANTY INFORMATION

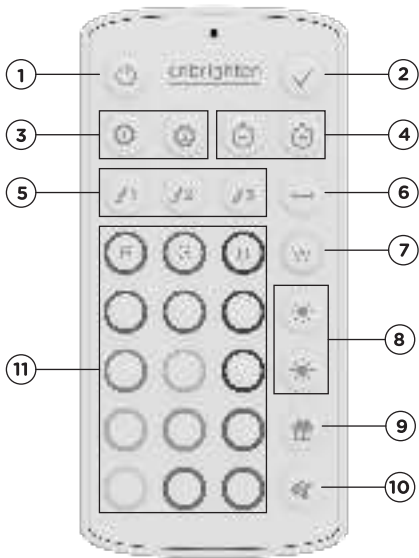
IMPORTANT — PLEASE READ

Refer to the manual or visit www.enbrightenme.com/warranty for limitations and restrictions on warranties and the product registration information.

Electrical Ratings

Electrical Ratings Input: 120VAC 60Hz
Model: 85832
Length: 22ft.
Total Wattage: 9W
Adapter Power Rating: 24VDC
Maximum Length: Link up to four light strands for a total of 48 puck lights

- White Select – Press repeatedly to advance through three white options: Soft white (2200K), Warm white (3000K) and Daylight (5000K).
 - Dimming – Press repeatedly or press and hold to adjust light level up or down.
 - Holiday Modes – Press repeatedly to cycle through the following modes: Valentine's Day, July 4th, Halloween, Christmas and St. Patrick's Day.
 - MusicSync Mode – Press and release for lights to react to sound.
 - Color Palette – Find your favorite color, then press the corresponding button to select. All lights will change to the color selected.
- NOTE: When turned off and on again, your lights will return to the last mode and/or color scheme used.



REMOTE CONTROL SETUP & OPERATION

The remote requires two (2) AAA batteries (included). Alkaline batteries are recommended.

Install batteries

- Remove the battery cover.
 - Insert the batteries, making sure to match the (+) (-) polarity inside the compartment.
 - Replace the battery cover.
- Note: If your remote stops operating properly, replace the batteries with new ones.

Battery precautions

- Do not mix old and new batteries.
- Do not mix alkaline, standard (carbon-zinc) or rechargeable (Ni-Cd, Ni-MH, etc.) batteries.
- Always remove old, weak or worn-out batteries promptly and recycle or dispose of them in accordance with local and national regulations.

Pair the remote

To quickly pair the remote to one or more light strands, press and hold the remote's power button for 5 seconds. You can now operate your lights using the remote.

Button functions

- ON/OFF – Press to activate and deactivate the lights.
- Favorite – Select your favorite color/effect/mode combo, then press the Favorite button to store that setting and access it in the future.
- Presets 1 & 2 – Press repeatedly to advance through various color, mode and effect combinations.
- Speed – Press repeatedly or press and hold to increase or decrease speed of lighting effect.
- Custom Color 1, 2 & 3 – Press the paintbrush icon 1, then select a color. Press the paintbrush icon 2, then select a color. If a third color is desired, press the paintbrush icon 3, then select a color. The colors will alternate between each bulb.
- Reverse Effect – Press to reverse the direction of dynamic modes and presets.

⚠ WARNING

KEEP PACKAGING BAGS AWAY FROM BABIES AND CHILDREN. DO NOT USE IN CRIBS, BEDS, CARRIAGES, OR PLAYPENS. THE THIN FILM MAY CLING TO NOSE AND MOUTH AND PREVENT BREATHING.

⚠ WARNING

RISK OF ELECTRIC SHOCK

- RECEPTACLE OUTLETS USED FOR POWERING LIGHTS SHALL COMPLY WITH ALL NATIONAL AND LOCAL ELECTRICAL CODES. CONSULT LOCAL ELECTRICAL IF UNSURE OF COMPLIANCE REQUIREMENTS.
- DO NOT SUBMERSE.
- DO NOT USE AROUND AQUARIUMS.
- LIGHTS HAVE NO SERVICEABLE PARTS.
- DO NOT USE WITH EXTENSION CORD NEAR WATER OR WHERE WATER MAY ACCUMULATE.
- KEEP LAMPS AT LEAST 16FT. (4.8M) FROM POOLS AND SPAS.
- KEEP PLUGS AND RECEPTACLES DRY.
- AVOID DAMAGE TO THE CORDS AND LAMP ASSEMBLIES DURING THE INSTALLATION.
- REPLACE ANY DAMAGED LIGHT STRINGS.
- DO NOT INSTALL IN LOCATIONS WHERE LIGHTS CAN BE STEPPED ON.
- ENSURE LIGHTS ARE UNPLUGGED FROM POWER DURING INSTALLATION.
- CHILDREN SHOULD NOT BE ALLOWED TO PLAY WITH LIGHTS.
- ETL RECOMMENDS TESTING RECEPTACLES EVERY MONTH TO ENSURE PROPER OPERATION.

RISK OF FIRE

- WALL LIGHTS ARE DESIGNED TO BE LINKED BY USING THEIR ELECTRICAL PLUGS AND RECEPTACLES TO A MAXIMUM OF FOUR STRANDS.
- WALL LIGHT INTERCONNECTING RECEPTACLES ARE INTENDED ONLY FOR THE LINKING OF COMPATIBLE LIGHT STRANDS. DO NOT USE WALL LIGHT RECEPTACLES FOR ANY OTHER ELECTRICAL PURPOSE.
- NOT INTENDED FOR INSTALLATION OF POWER SUPPLY, LED PUCK OR CORDS IN CEILINGS, SOFFITS, CABINETS, ATTICS OR OTHER ENCLOSED SPACES.

App Store is a service mark of Apple Inc.
Google, Google Play and Google Home are trademarks of Google LLC.
Amazon, Alexa and all related logos are trademarks of Amazon.com, Inc. or its affiliates.

MADE IN THAILAND
Distributed by Jasco Products Company LLC,
10 E. Memorial Rd., Oklahoma City, OK 73114.
This Jasco product has a 5-year limited warranty. For warranty details, visit www.enbrightenme.com/warranty.
Questions? Contact our U.S.-based Consumer Care at 1-800-225-0653, M-F.
www.enbrightenme.com
©JASCO 2025 | 85832 | 12/11/24 v1

PATENTS/PATENTS PENDING
WWW.BYJASCO.COM/PATENTS

