

Using WinDVD

To change the region settings on a drive using WinDVD:

1. Open WinDVD through one of the following methods:
 - ☐ Select the WinDVD Player icon on the notification area.
 - ☐ Select **Start > (All) Programs > InterVideo WinDVD > InterVideo WinDVD.**
2. Right-click the WinDVD player window.
3. Select **Setup.**
4. Select the button for the region.
5. Select **OK.**

Using Other DVD Software

To change region settings on a drive using a DVD player other than WinDVD, refer to the documentation provided with the player.

DRAFT Revised: 9/22/04
File: Chap6.fm
PN: HP-367426-001

6

Drives

Drive Care

The following sections identify and describe the primary hard drive and the optional external MultiBay or MultiBay II.

Drives are fragile components that must be handled with care. The following cautions apply to all drives. Additional cautions are included with the procedures to which they apply.

DRAFT Revised: 9/22/04
File: Chap6.fm
PN: HP-367426-001

Drives



CAUTION: To prevent loss or damage to the tablet PC or a drive:

- Handle a drive carefully. Do not drop it.
- Excessive force can damage drive connectors. When you insert a drive, use only enough force to seat the drive.
- Do not spray a drive with cleaning fluid or other liquid or expose it to temperature extremes.
- Do not remove the primary hard drive (the hard drive in the hard drive bay) except for repair or replacement.
- Electrostatic discharge can damage electronic components. To prevent electrostatic damage to the tablet PC or a drive:
 - ☐ Discharge yourself from static electricity by touching a grounded metal object before handling a drive.
 - ☐ Avoid touching the connectors on a drive.For more information about preventing electrostatic damage, refer to the *Regulatory and Safety Notices* guide.
- Avoid exposing a drive to devices with magnetic fields. Security devices with magnetic fields include airport walk-through devices and security wands. The airport security devices that check carry-on luggage, usually while it is placed on a conveyor belt, use x-rays instead of magnetism and will not damage a drive.
- If you mail a drive, ship it in packaging that protects it from shock, vibration, temperature, and high humidity. Label the package "FRAGILE."

Hard Drive Activity Light

The hard drive light is turned on when the primary hard drive is being accessed.



Primary Hard Drive

CAUTION: To prevent system lockup and loss of information, shut down the tablet PC before removing the hard drive from the hard drive bay. Do not remove the hard drive while the tablet PC is on, in standby or in hibernation.

The tablet PC has 1 hard drive bay that supports only 1 hard drive. The hard drive in the hard drive bay is the *primary* hard drive.

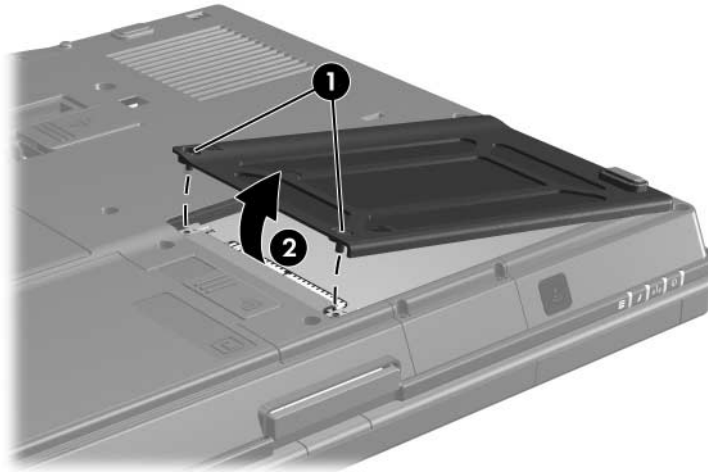
To remove the primary hard drive:

1. Save your work and then shut down the tablet PC. (If you are not sure whether the tablet PC is in hibernation, turn the tablet PC on by sliding the power switch toward the rear of the tablet PC. Then shut down the tablet PC through the operating system.)

DRAFT Revised: 9/22/04
File: Chap6.fm
PN: HP-367426-001

Drives

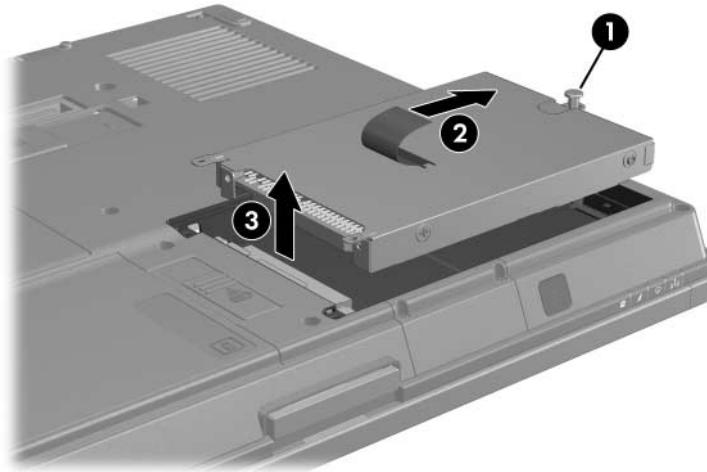
2. Close the display.
3. Turn the tablet PC upside down with the front of the tablet PC facing you.
4. Loosen the two hard drive screws **1**.
5. Lift the hard drive cover **2** away from the tablet PC.



DRAFT Revised: 9/22/04
File: Chap6.fm
PN: HP-367426-001

Drives

6. Loosen the hard drive screw ❶.
7. Pull the hard drive tab ❷ to the right to disconnect the hard drive.
8. Lift the hard drive ❸ from the tablet PC.

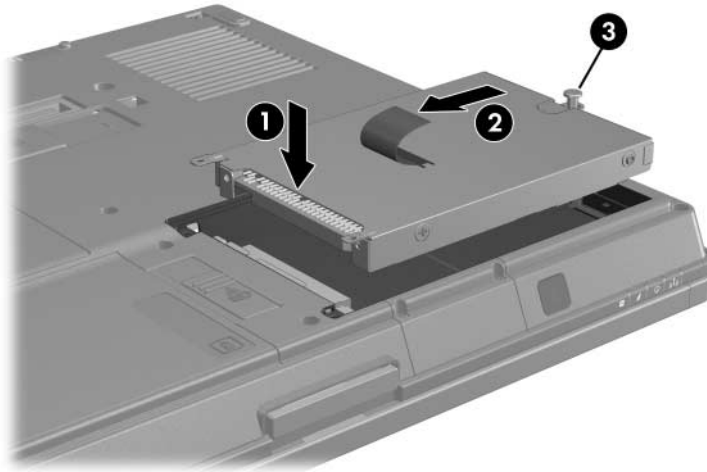


DRAFT Revised: 9/22/04
File: Chap6.fm
PN: HP-367426-001

Drives

To install a hard drive:

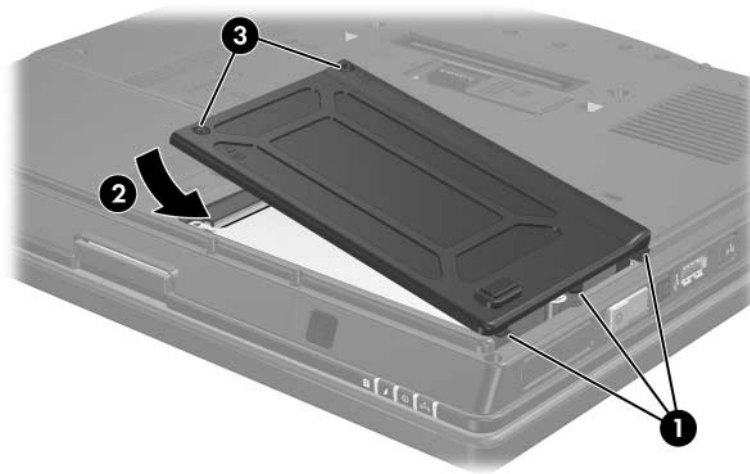
1. Insert a hard drive ❶ into the hard drive bay on the bottom of the tablet PC.
2. Push the hard drive tab ❷ to the left to connect the hard drive.
3. Tighten the hard drive screw ❸.



DRAFT Revised: 9/22/04
File: Chap6.fm
PN: HP-367426-001

Drives

4. Align the tabs **1** on the hard drive cover with the slots on the tablet PC.
5. Close the cover **2**.
6. Tighten the hard drive cover screws **3**.



External Drives

Removable external drives enable you to store and access data.

A USB drive can be added by connecting the drive to a USB port on the tablet PC or on an optional docking device. For information about connecting a USB drive, refer to [Chapter 10, "USB Devices."](#)

An external MultiBay or MultiBay II supports any MultiBay or MultiBay II device, including the following:

- ☐ 1.44-megabyte diskette drive
- ☐ Hard drive module (a hard drive with an adapter attached)
- ☐ DVD-ROM Drive
- ☐ DVD/CD-RW Combo Drive
- ☐ DVD+RW/W and CD-RW Combo Drive
- ☐ DVD±RW/W and CD-RW Combo Drive

For more information about the external MultiBay, refer to the documentation that is included with the device.

Optional External Devices

The jacks and connectors described in this guide support standard external devices.

- For information about which jack or port to use, refer to the documentation included with the device.
- For information about installing or loading any software required by the device, such as drivers, refer to the documentation included with the device.

To connect a standard external device to the tablet PC:

1. If you are connecting a powered device, turn off the device.
2. Connect the device to the tablet PC.
3. If you are connecting a powered device, plug the device power cord into a grounded electrical outlet.

4. Turn on the device.

To disconnect a standard external device from the tablet PC, turn off the device, and then disconnect it from the tablet PC.

Optional External MultiBay and External MultiBay II

An external MultiBay or MultiBay II connects to the tablet PC USB port and enables you to use MultiBay and MultiBay II devices. The tablet PC provides one powered USB port on the right side. This port provides power to the external MultiBay when used with a powered USB cable. The USB ports on the rear panel and left side of the tablet PC do not provide power to the external MultiBay. External MultiBays connected to these USB ports must be connected to AC power.

7

PC Cards

What Is a PC Card?



CAUTION: If you install software or enablers provided by a PC Card manufacturer, you may not be able to use other PC Cards. If you are instructed by the documentation included with your PC Card to install device drivers:

- Install only the device drivers for your operating system.
- Do not install other software, such as card services, socket services, or enablers, that may also be supplied by the PC Card manufacturer.

A PC Card is a credit card-sized accessory designed to conform to the standard specifications of the Personal Computer Memory Card International Association (PCMCIA).

- The tablet PC supports 32-bit (CardBus) and 16-bit PC Cards.
- The tablet PC is equipped with one PC Card slot, and it supports one Type I card or one Type II card.
- Zoomed video PC Cards and 12-V PC Cards are *not* supported.

DRAFT Revised: 9/22/04
File: Chap7.fm
PN: HP-367426-001

PC Cards

Insertion



CAUTION: To prevent damage to the connectors:

- Use minimal pressure when inserting a PC Card into a PC Card slot.
- Do not move or transport the tablet PC while a PC Card is operating.

1. Hold the PC Card label side up with the connector toward the tablet PC.
2. Gently slide the card into the slot until the card is seated. The operating system will issue a sound to indicate that a device has been detected.



Removal



CAUTION: To prevent loss of work or an unresponsive system, stop the PC Card before removing it.

1. Close all files and applications using the PC Card.
2. Stop the PC Card by selecting the Safely Remove Hardware icon on the taskbar, and then selecting the PC Card. (To display the Safely Remove Hardware icon, select **Show Hidden Icons** on the taskbar.)
3. Press the PC Card eject button ❶. This action extends the button into position for releasing the PC Card.
4. To release the PC Card, press the extended PC Card eject button.
5. Gently slide out the card ❷.



An inserted PC Card uses power even when not in use. To conserve power, stop or remove a PC Card when you are not using it.

8

Digital Memory Cards

What Is a Digital Memory Card?

Digital memory cards are removable thumbnail-sized flash storage devices that provide a convenient method of storing data and sharing it with other devices such as handheld devices, PDAs, cameras, and other SD-equipped PCs.



Secure Digital (SD) Cards and MultiMediaCards are the only type of digital memory card formats that are supported.

DRAFT Revised: 9/22/04
File: Chap8.fm
PN: HP-367426-001

Digital Memory Cards

Insertion



CAUTION: To prevent damage to the connectors:

- Use minimal pressure when inserting a digital memory card into a digital memory card slot.
- Do not move or transport the tablet PC while a digital memory card is operating.

To insert a digital memory card:

1. Insert the digital memory card into the digital memory card slot.
2. Slide the card firmly into the slot until the card clicks into place.



Removal



CAUTION: To prevent loss of work or system lockup, stop the digital memory card before removing it.

To remove a digital memory card:

1. Close all files and applications that are using the digital memory card.
2. Stop the digital memory card by selecting the Safely Remove Hardware icon in the taskbar. Then select the digital memory card. (To display the Safely Remove Hardware icon, select **Show Hidden Icons** in the taskbar.)
3. Gently press in on the digital memory card ❶ to unlock it.
4. Slide the digital memory card ❷ from the slot.



9

Memory Modules

What Is a Memory Module?



WARNING: The memory module compartment, the hard drive bay, and the battery bay are the only user-accessible internal compartment on the tablet PC. All other areas that require a tool to open should be opened only by a service partner.



WARNING: Failure to unplug the power cord and remove all battery packs before installing a memory module can damage the equipment and expose you to the risk of electric shock.



CAUTION: Electrostatic discharge (ESD) can damage electronic components. Before beginning any procedure, ensure that you are discharged of static electricity by touching a grounded metal object. For more information, refer to the *Regulatory and Safety Notices* guide.

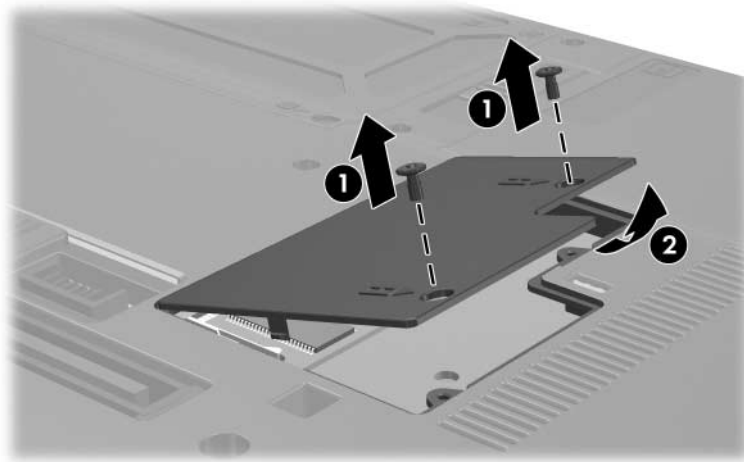
The tablet PC has two memory module compartments. The primary memory module compartment is located under the keyboard. The expansion memory module compartment is located on the bottom of the tablet PC.

The memory capacity of the tablet PC can be upgraded by adding a memory module to the expansion slot or by upgrading the existing memory module in the primary memory slot.

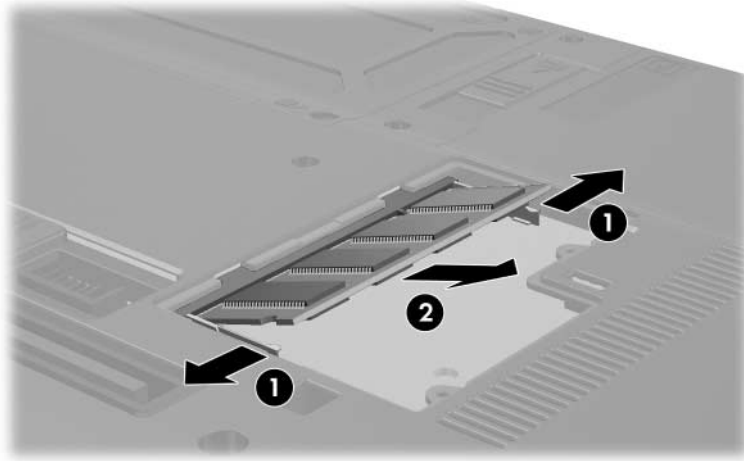
Expansion Memory Slot

To add or upgrade a memory module in the expansion memory slot:

1. Shut down the tablet PC. (If you are not sure whether the tablet PC is off or in hibernation, turn the tablet PC on by sliding the power switch toward the rear of the tablet PC. Then shut down the tablet PC through the operating system.)
2. Disconnect all external devices connected to the tablet PC.
3. Disconnect the power cord.
4. Turn the tablet PC upside down.
5. Remove any battery packs from the tablet PC.
6. Loosen the memory module cover screws ❶.
7. Lift the memory module cover ❷ away from the tablet PC.



8. If there is a memory module in the memory slot, remove it:
- Pull away the retention clips **1** on each side of the module. (The module tilts upward.)
 - Grasp the edges of the module **2** and gently pull the module out of the memory slot. To protect a memory module after removal, place it in an electrostatic-safe container.

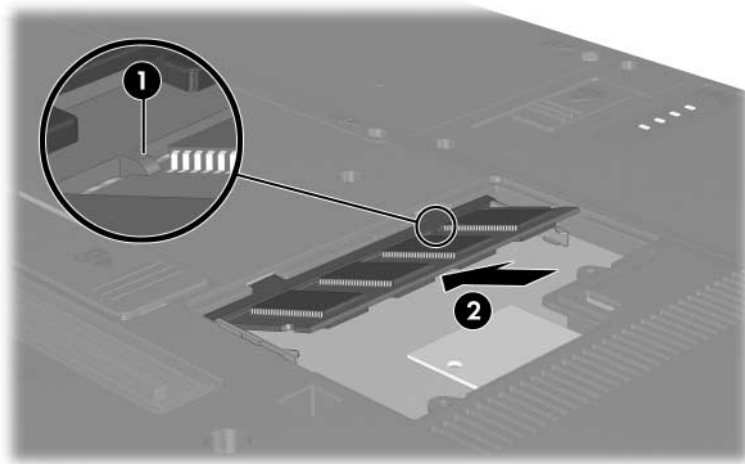


DRAFT Revised: 9/22/04
File: Chap9.fm
PN: HP-367426-001

Memory Modules

9. Insert the new memory module:

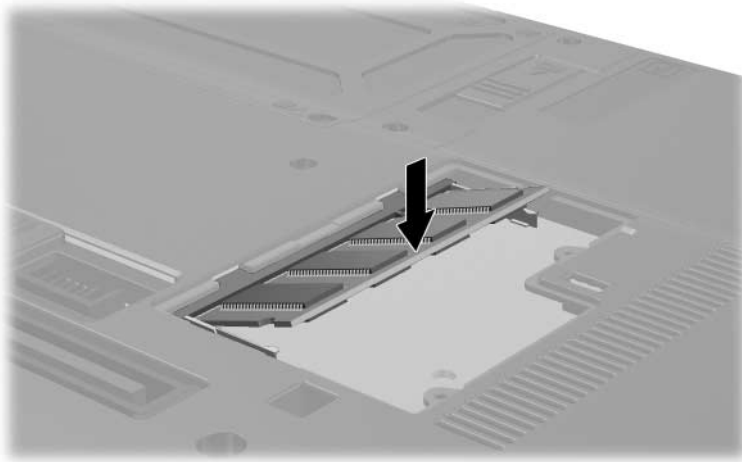
- a. Align the keyed (notched) edge ❶ of the module with the tabbed area in the memory slot.
- b. With the module at a 45-degree angle from the surface of the memory compartment, press the module ❷ into the memory slot until it is seated.



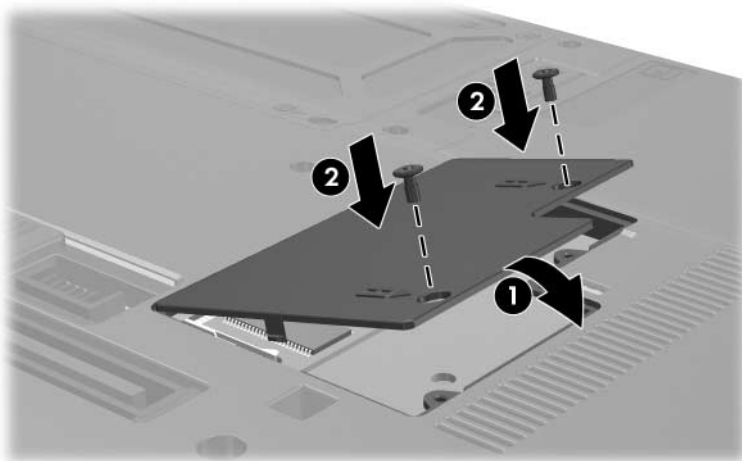
DRAFT Revised: 9/22/04
File: Chap9.fm
PN: HP-367426-001

Memory Modules

- c. Press the module downward until the retention clips snap into place.



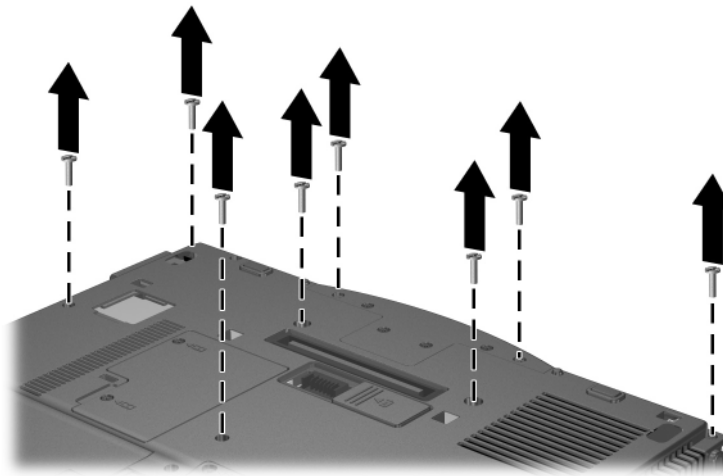
10. Replace the memory module cover **1** and the memory module cover screws **2**.



Primary Memory Slot

To replace the existing memory module in the primary memory slot:

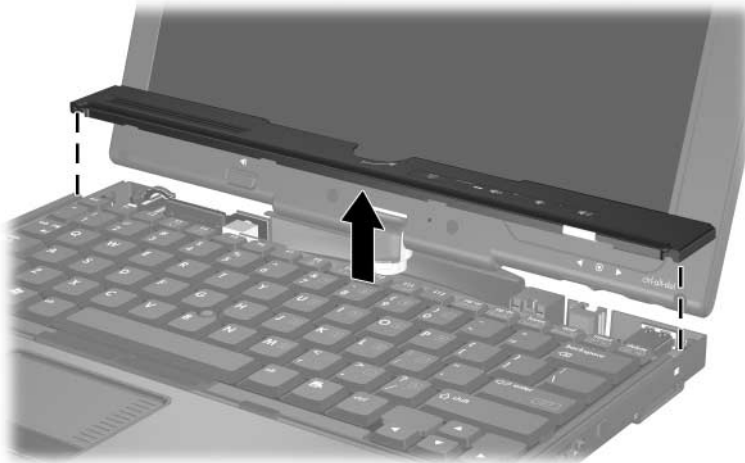
1. Shut down the tablet PC. (If you are not sure whether the tablet PC is off or in hibernation, turn on the tablet PC by sliding the power switch toward the rear of the tablet PC. Then shut down the tablet PC through the operating system.)
2. Disconnect all external devices connected to the tablet PC.
3. Disconnect the power cord.
4. Turn the tablet PC upside down.
5. Remove any battery packs from the tablet PC.
6. Remove the 8 screws from the bottom of the tablet PC.



DRAFT Revised: 9/22/04
File: Chap9.fm
PN: HP-367426-001

Memory Modules

7. Turn the tablet PC display-side up and open it.
8. Remove the button cover from the tablet PC using the flat end of a screwdriver.



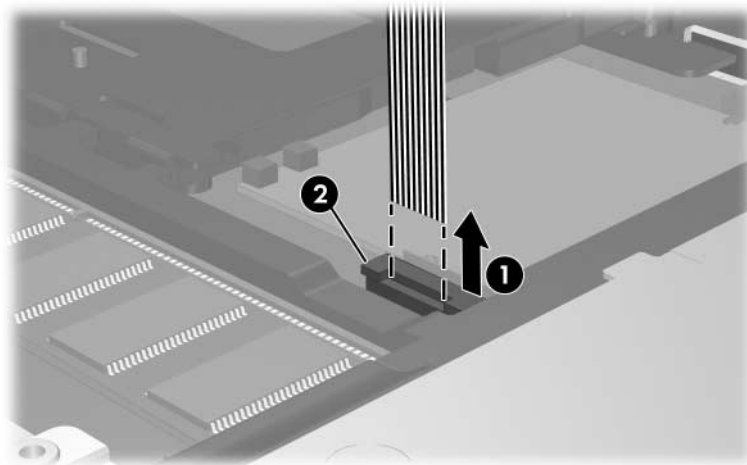
DRAFT Revised: 9/22/04
File: Chap9.fm
PN: HP-367426-001

Memory Modules

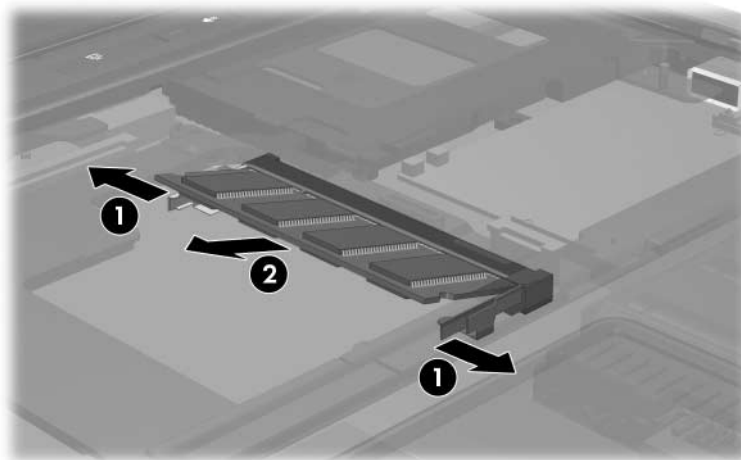
9. Lift the top edge of the keyboard and tilt the keyboard over until it rests on the palm rest of the tablet PC.



10. Remove the pointing stick cable ❶ from the pointing stick connector ❷.



11. To remove the memory module from the memory slot:
 - a. Pull the retention clips ❶ away from each side of the module. The module tilts upward when released.
 - b. Lift the edge of the memory module ❷, and gently remove it from the slot.



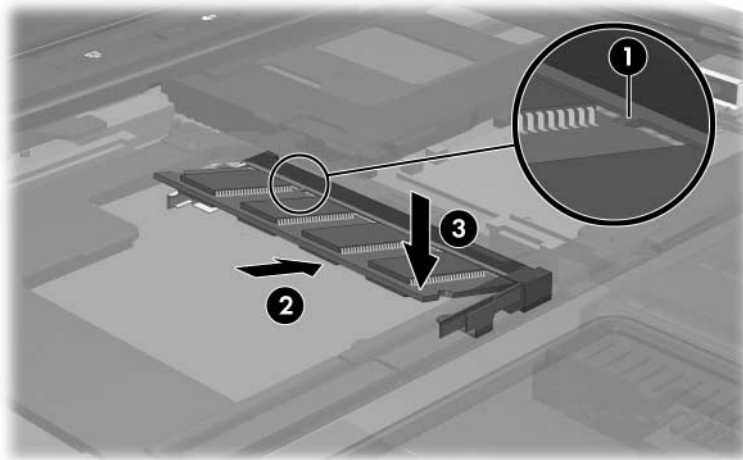
△ To protect a memory module after it has been removed, place it in a static-safe container.

12. To insert a new memory module into the memory slot:
 - a. Align the keyed (notched) edge ❶ of the module with the keyed area in the expansion slot.
 - b. Press the module ❷ into the slot from a 45-degree angle until it is seated.

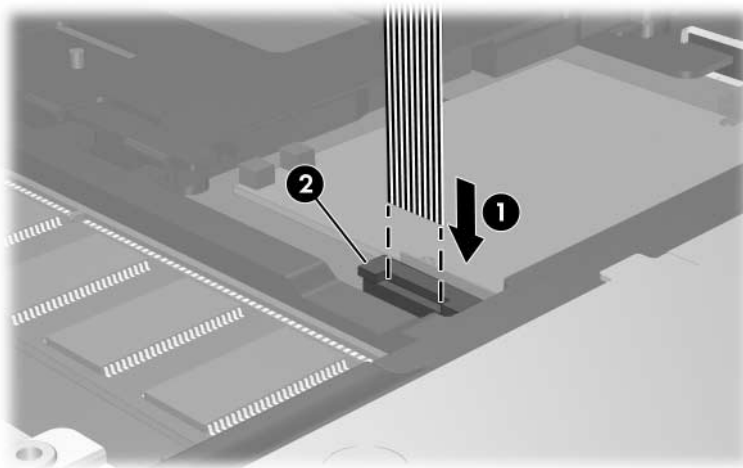
DRAFT Revised: 9/22/04
File: Chap9.fm
PN: HP-367426-001

Memory Modules

- c. Press the module downward **3** until the retention clips snap into place.



13. Replace the pointing stick cable **1** in the pointing stick connector **2**.



14. Replace the keyboard.
15. Replace the button cover on the tablet PC.
16. Replace the screws located on the bottom of the tablet PC.
17. Replace the battery pack(s).
18. Reconnect external power and external devices.
19. Restart the tablet PC.

Hibernation File

When random access memory (RAM) increases, the operating system increases the hard drive space reserved for the hibernation file.

If you experience problems with hibernation after increasing RAM, verify that your hard drive has enough free space to accommodate a larger hibernation file.

- To display the amount of RAM in the system:
 - ☐ Select **Start > Control Panel > Performance and Maintenance > System > General** tab.
 - or –
 - ☐ Press **fn+esc**.
- To display the amount of free space on your hard drive, select **Start > My Computer**. Then select your hard drive. Information about the space on the drive is displayed in the **Details** window on the left-side of the window.
- To display the amount of space required by the hibernation file, select **Start > Control Panel > Performance and Maintenance > Power Options > Hibernate** tab.

10

USB Devices

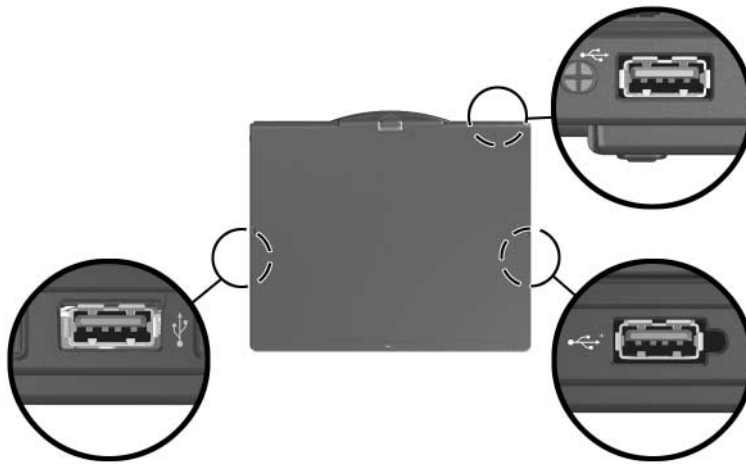
What Is USB?

Universal Serial Bus (USB) is a hardware interface that can be used to connect external devices such as a USB keyboard, mouse, drive, printer, scanner, or hub to the tablet PC. The tablet PC has three standard USB connectors that support USB-2.0 and USB-1.1 devices.

A USB device functions in the same way as a comparable non-USB device, with one exception. By default, USB devices do not function unless an operating system that supports USB is installed in the tablet PC.

Some USB devices may require additional support software, which is usually included with the device. For more information and software installation instructions, refer to the documentation included with the device.

USB Device Connection



USB hubs can be connected to a USB connector on the tablet PC, or on an optional docking device, or to other USB devices. Hubs support varying numbers of USB devices and are used to increase the number of USB devices in the system. Powered hubs must be connected to external power. Unpowered hubs must be connected either to a USB connector on the tablet PC or to a port on a powered hub.

Operating System and Software

A USB device functions in the same way as a comparable non-USB device, with one exception. By default, USB devices do not function unless an operating system that supports USB is installed in the tablet PC.

Some USB devices may require additional support software, which is usually included with the device. For more information and software installation instructions, refer to the documentation included with the device.

USB Legacy Support

You must enable USB legacy support to

- Use a USB keyboard, mouse, or hub connected to a USB connector on the tablet PC during startup or in a non-Windows application or utility.
- Restart from an optional external MultiBay.

To enable USB legacy support:

1. Turn on or restart the tablet PC.
2. Press **f10** while the F10 = ROM Based Setup message is displayed in the lower-left corner of the screen.
 - ☐ To change the language, press **f2**.
 - ☐ For navigation instructions, press **f1**.
3. Select **Advanced > Device Options**.
4. Select **Enable USB legacy support**.
5. To save your preference and exit Computer Setup, select **File > Save changes and exit**, and then follow the instructions on the screen.

11

Modem and Networking

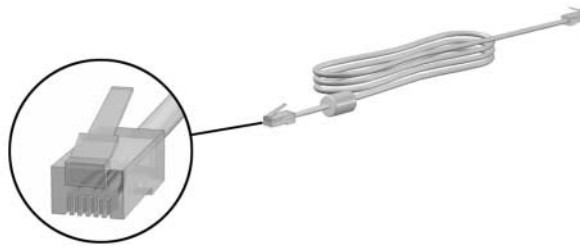
Internal Modem

Modem Cable



WARNING: Connecting the tablet PC to a digital line can permanently damage the modem. Immediately disconnect your modem cable if you accidentally connect it to a digital line.

A modem cable, which has a 6-pin RJ-11 connector at each end, must be connected to an analog telephone line. In some countries, a country-specific modem adapter is required. Jacks for digital PBX systems may resemble analog telephone jacks, but they are not compatible with the modem.



DRAFT Revised: 9/22/04
File: Chap11.fm
PN: HP-367426-001

Modem and Networking

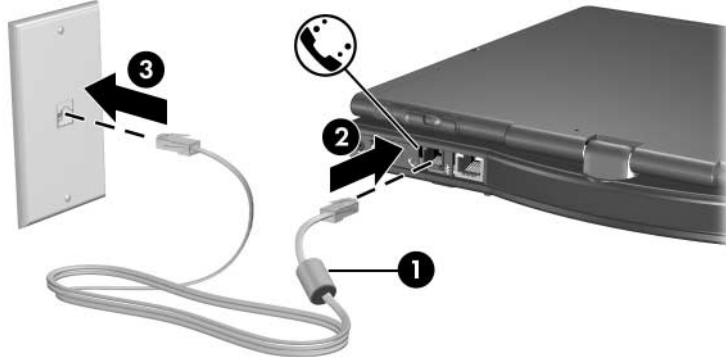
Using the Modem Cable

To connect a modem cable:



WARNING: To avoid the risk of electrical shock, fire, or damage to the equipment, do not plug a modem cable into a network jack.

1. Turn the tablet PC display-side up on a flat surface near a telephone wall jack.
2. If the modem cable has a noise suppression circuitry **1**, which prevents interference with TV and radio reception, orient the circuitry end of the cable toward the tablet PC.
3. Plug the modem cable into the RJ-11 (modem) jack **2** on the tablet PC.
4. Plug the other end of the modem cable into an RJ-11 telephone jack **3**.



For more information about using the modem or about using AT commands and dial modifiers, refer to the “[Modem Country Selection](#)” section or the *Modem Command Guidelines (Advanced Users Only)* provided in English.

Using a Country-Specific Modem Cable Adapter

Telephone jacks vary by region and country. If you are connecting the modem to a telephone line in a region or country where RJ-11 telephone jacks are not standard, you must obtain a country-specific modem adapter. Refer to the “[Modem Country Selection](#)” section for more details about using your tablet PC internationally.

To connect the modem to an analog telephone line that does *not* have an RJ-11 telephone jack:



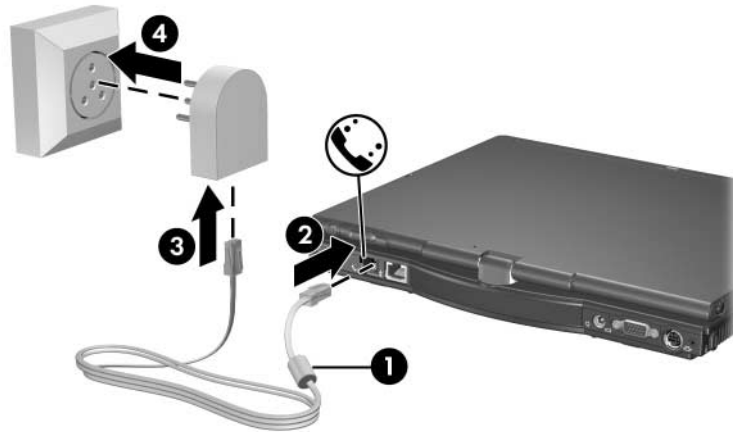
WARNING: To avoid the risk of electrical shock, fire, or damage to the equipment, do not plug a modem cable into the network jack.

1. Turn the tablet PC display-side up on a flat surface near a telephone wall jack.
2. If the modem cable has a noise suppression circuitry ❶, which prevents interference with TV and radio reception, orient the circuitry end of the cable toward the tablet PC.
3. Plug the modem cable into the RJ-11 (modem) jack ❷ on the tablet PC.
4. Plug the modem cable ❸ into the country-specific modem cable adapter.

DRAFT Revised: 9/22/04
File: Chap11.fm
PN: HP-367426-001

Modem and Networking

5. Plug the country-specific modem cable adapter **4** into the telephone jack.



Modem Country Selection


Viewing the Current Country Selection

To see the current country setting for your modem:


1. Select **Start > Control Panel > Date, Time, Language, and Regional Options > Regional & Language Options**.
2. Under Location, view your present location.

Adding New Locations When Traveling

The internal modem is configured to meet only the operating standards in the country where you purchased the tablet PC. When traveling internationally, you can add new location configurations that comply with standards in other countries.


 **CAUTION:** Do not delete your current modem country settings. To enable modem use in other countries while preserving your home country configuration, add a new configuration for each location in which you will use the modem.

The drop-down lists described below may include countries not supported by the modem. Unless you select a supported country, the country selection will default to USA or UK.


 **CAUTION:** Selecting a country other than the one in which the computer is located may cause your modem to be configured in a way that violates the telecommunications regulations/laws of that country. In addition, your modem may not function properly if the correct country selection is not made.

To add a new country location:

1. Select **Start > Control Panel > Network and Internet Connections > Phone and Modem Options > Dialing Rules** tab.

 The first time you select the **Dialing Rules** tab, you will be prompted to enter your area code information in the **Local Information** window.

2. Select the **New** button and assign a name (home, work, etc.).
3. Select the Country/Region from the drop-down list.

 The drop-down list may include countries not supported by the modem. Unless you select a supported country, the country selection will default to USA or UK.

4. Select **OK > OK**.

Solving Travel Connection Problems

If you experience connection problems while using the modem outside your home country, the following suggestions may help:

■ Check the telephone line type

The modem requires an analog, not a digital, telephone line. A line described as a PBX line is usually a digital line. A telephone line described as a data line, fax machine line, modem line, or standard telephone line is probably an analog line.

■ Check for tone or pulse dialing settings

Dial a few digits on the telephone and listen for clicks (pulses) or tones. Then select:

1. Select **Start > Control Panel > Network and Internet Connections > Phone and Modem Options > Dialing Rules** tab.



The first time you select the **Dialing Rules** tab, you will be prompted to enter your area code information in the **Local Information** window.

2. Select your location and then select **Edit**.
3. Select either **Tone** or **Pulse** depending on what you heard on the line.
4. Select **OK > OK**.

■ Check the telephone number you are dialing and the response of the remote modem

Dial the telephone number on the telephone, wait for the remote modem to answer, and then hang up.

■ Set the modem to ignore dial tones

If the modem receives a dial tone it does not recognize, it will not dial and will display a No Dial Tone error message. Use the following procedures to set the modem to ignore all dial tones before dialing:

1. Select **Start > Control Panel > Network and Internet Connections > Phone and Modem Options > Modems** tab.
2. Select your modem > **Properties > Modem** tab.
3. Clear the **Wait for dial yone before dialing** check box.
4. If you continue to receive the No Dial Tone error message after clearing the check box:
 - a. Select **Start > Control Panel > Network and Internet Connections > Phone and Modem Options > Dialing Rules** tab.



The first time you select the **Dialing Rules** tab, you will be prompted to enter your area code information in the **Local Information** window.

- b. Select your location and then select **Edit**.
- c. Select the country/region from the drop-down list.
- d. Select **Apply > OK**.
- e. Select the **Modems** tab.
- f. Select your modem and then select **Properties**.
- g. Clear the **Wait for dial tone before dialing** check box.

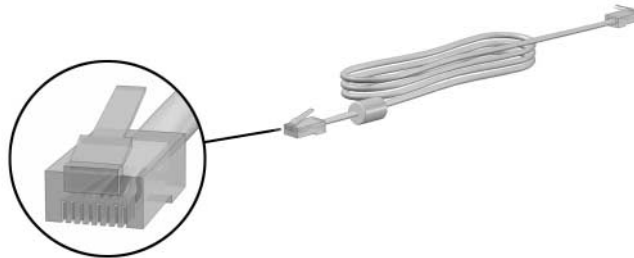
Preinstalled Communication Software

To use preinstalled modem software for terminal emulation and data transfer, follow these steps:

1. Select **Start > All Programs > Accessories > Communications**.
2. Select the appropriate fax or terminal emulation program or Internet connection wizard.

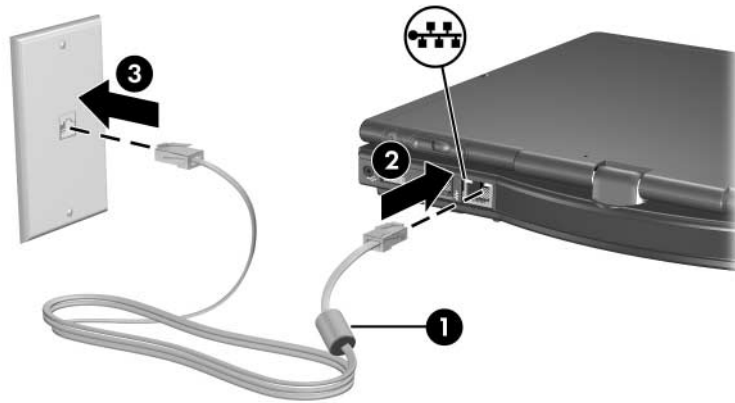
Network

A network cable has an 8-pin RJ-45 connector at each end. If the network cable contains noise suppression circuitry, which prevents interference from TV and radio reception, orient the circuitry end of the cable toward the tablet PC.



To connect the network cable:

1. Turn the tablet PC display-side up on a flat surface near a network jack.
2. If the network cable has a noise suppression circuitry ❶, which prevents interference with TV and radio reception, orient the circuitry end of the cable toward the tablet PC.
3. Plug the network cable into the RJ-45 (network) jack ❷ on the tablet PC.
4. Plug the other end of the cable into a network jack ❸.



Your tablet PC is equipped with LAN Power Save mode, which enables you to conserve battery power. LAN Power Save mode turns off the LAN device when the tablet PC is not connected to external power and the network cable is disconnected. For more information, refer to [“Using LAN Power Save Mode”](#) in [Chapter 2, “Power.”](#)

12

Q Menu Software

Q Menu

The Q Menu provides quick access to many of the system tasks accessed with the buttons, keys, or hot keys found on most tablet PCs.

You can program the Q Menu to access alternative system tasks or to access any item on a drive, a network, or the Internet.

Identifying Q Menu Controls


The jog dial ❶ and the Q Menu button ❷ are used in Q Menu procedures.



Displaying and Closing the Q Menu

The Q Menu can be displayed or closed at any time by using any of the following procedures:

- To display the Q Menu, press the **Q** button or select the **Q** icon in the notification area (at the far right of the taskbar).

 Only the system administrator can update this option.

If the Q icon is not displayed in the notification area (at the far right of the taskbar):

1. Press the **Q** button.
2. Select **Q Menu Settings**.
3. Select the **Display Q Menu Icon On System Tray** check box.
4. Select **OK**.

If the icon is not displayed, select **Show Hidden Icons** in the notification area (at the far right of the taskbar).

- To close the Q Menu, press the **Q** button or select anywhere outside of the Q Menu.

For information about setting a pen-activated button to open and close the Q Menu, refer to [Chapter 4, "Pen and Command Controls."](#)

Selecting an Item from the Q Menu

The items on the Q Menu can be selected with the jog dial, the pen, an external mouse, or the pointing devices.

To select an item with the jog dial, rotate the jog dial upward or downward to scroll vertically through the items, and then press the jog dial inward to select an item.

Obtaining Information About System-Defined Items

To display a description of a system-defined Q Menu item or to test any Q Menu item by executing the item command:

1. Press the **Q** button or select the **Q** icon in the notification area (at the far right of the taskbar).
2. Select **Q Menu Settings**.
3. On the Items to Display On Q Menu list:
 - ☐ To display a description of a system-defined item, select the item. User-defined items are not described.
 - ☐ To test any item by executing the item command, select the item, and then select **Execute**. If an item is not available to test, the Execute button will be unavailable.

Procedures for using all system-defined items are provided in the [“Using a System-Defined Item”](#) section, later in this chapter.

Setting Q Menu Preferences

The Q Menu can display up to 40 items. Several system-defined items are displayed by default. Additional system-defined and user-defined items can be added. All items, including the default items, can be removed.

The items on the Q Menu are managed from the Items to Display On Q Menu list.

Accessing the Items to Display on Q Menu List

The Items to Display on Q Menu list can be accessed at any time by using either of the following procedures:

- Press the **Q** button or select the **Q** icon in the notification area (at the far right of the taskbar), and then select **Q Menu Settings**.
- Select **Start > Control Panel > Other Control Panel Options > Q Menu Settings**.

Removing a Q Menu Item

To remove an item from the Q Menu:

1. Press the **Q** button or select the **Q** icon in the notification area (at the far right of the taskbar).
2. Select **Q Menu Settings**.
3. On the Items to Display On Q Menu list, clear the check box for the item you want to remove.
4. Select **Apply > OK**.

Adding a Q Menu Item

An item must be displayed on the Items to Display On Q Menu list before it can be added to the Q Menu.

The Q Menu and the Items to Display on Q Menu list can include no more than 40 items. If the list currently contains 40 items, the Add button is unavailable. If the Add button is unavailable, you must remove a listed item before you can add the new item.

Adding a Listed Item to the Q Menu

To add an item from the Items to Display On Q Menu list to the Q Menu:

1. Press the **Q** button or select the **Q** icon in the notification area (at the far right of the taskbar).
2. Select **Q Menu Settings**.
3. Select the check box for the item you want to add.
4. Select **OK**.

To display the Q Menu after adding the item, press the **Q** button or select the **Q** icon in the notification area (at the far right of the taskbar).

Adding an Unlisted Item to the Q Menu

To add an item to both the Items to Display on Q Menu list and to the Q Menu when it is not on the Items to Display on Q Menu list—for example, an item on a drive, network, or the Internet:

1. Press the **Q** button or select the **Q** icon in the notification area (at the far right of the taskbar).
2. Select **Q Menu Settings**.
3. Select **Add**.
4. In the **Add New Menu Entry** window, you can add the item by typing or by browsing:
 - ☐ To add the item using the keyboard, type a name for the item in the Display Name field and type the path to the item in the File Name field. If you prefer to type the Display Name, but browse for the File Name, leave the File Name field blank.
 - ☐ To add an item by browsing, select the **Browse** button next to the File Name field.
 - ☐ In the window, select the item. (The full name of the item is displayed in the File Name field and, if you did not type a name earlier in the Display Name field, a Display Name is generated from the item name and displayed in the Display Name field.)
5. To confirm your preference(s) and close the window, select **Apply > OK**.

To display the Q Menu after adding the item, press the **Q** button or select the **Q** icon in the notification area (at the far right of the taskbar).

Changing a User-Defined Item

User-defined items can be changed, but system-defined items cannot be changed. If you select a system-defined item on the Items To Display on Q Menu list, the Modify button is unavailable.

To change the Display Name and/or File Name of a user-defined item:

1. Press the **Q** button or select the **Q** icon in the notification area (at the far right of the taskbar).
2. Select **Q Menu Settings**.
3. Select the item on the Items To Display On Q Menu list.
4. Select **Modify**.
 - ☐ To change the Display Name or File Name of the item using the keyboard, type the new name for the item in the Display Name field or type the new path to the item in the File Name field. If you prefer to type the Display Name, but browse for the File Name, leave the File Name field blank.
 - ☐ To change the Display Name or File Name by browsing, select the **Browse** button beside the File Name field.
 - ☐ In the window, select the item. (The full name of the item is displayed in the File Name field and, if you did not type a name earlier in the Display Name field, a Display Name is generated from the item name and displayed in the Display Name field.)
5. To confirm your preference(s), select **Apply > OK**.
6. To close the **Q Menu Settings** window, select **OK**.

To display the Q Menu after changing a Display and/or File Name, press the **Q** button or select the **Q** icon in the notification area (at the far right of the taskbar).

Repositioning a Q Menu Item

To change the location of an item on the Q Menu:

1. Press the **Q** button or select the **Q** icon in the notification area (at the far right of the taskbar).
2. Select **Q Menu Settings**.
3. Select the item on the Items to Display On Q Menu list. Then
 - ☐ To move the item upward, select the **Move Up** button.
 - ☐ To move the item downward, select the **Move Down** button.
4. To confirm your preference(s) and close the **Q Menu Settings** window, select **Apply > OK**.

Removing an Item from the Items to Display on Q Menu List

System-defined items cannot be removed from the Items to Display on Q Menu List. To remove a user-defined item:

1. Press the **Q** button or select the **Q** icon in the notification area (at the far right of the taskbar).
2. Select **Q Menu Settings**.
3. Select the item you want to remove.
4. Select **Remove**.
5. To confirm your preference(s) and close the **Q Menu Settings** window, select **Apply > OK**.

Enabling Automatic Mode Change

Enabling automatic mode change allows the Q Menu software to adjust the display orientation automatically. If you disable this option, the orientation of the display will need to be manually changed.



Only the system administrator can update this option.

To enable automatic mode change:

1. Press the **Q** button or select the Q icon in the notification area (at the far right of the taskbar).
2. Select **Q Menu Settings**.
3. Select the **Enable Automatic Mode Change** check box.

Allowing All Users to Configure Q Menu

This option allows all user accounts to reconfigure Q Menu. When selected, each user on the system will have their own Q Menu settings. Changes to the Q Menu settings are applied to that user.



This option is only available to users with administrative privileges.

To allow users to configure Q Menu:

1. Press the **Q** button or select the Q icon in the notification area (at the far right of the taskbar).
2. Select **Q Menu Settings**.
3. Select the **Allow All Users to Configure Q Menu** check box.

Using a System-Defined Item

As shipped, the Q Menu displays only the items identified below as *default*. All the items described below can be added or removed from the Q Menu. For instructions, refer to “[Setting Q Menu Preferences](#),” earlier in this chapter.

Brightness (Default)

Select **Brightness** to display a pop-up window that enables you to adjust screen brightness with the jog dial. After selecting your preferences, select **OK** in the pop-up window.

Volume (Default)

Select **Volume** to display the operating system volume control window.

Mute On/Off (Default)

If system volume is on, select **Mute On/Off** to mute system volume. If system volume is muted, select **Mute On/Off** to restore system volume.

Capture Screen

Select **Capture Screen** to copy the image currently displayed on the tablet PC screen to the Windows clipboard.

To save or print the image, open an application which supports a screen image, such as Microsoft Word or Microsoft Paint, and then paste the image.

For example, to copy the screen image into a Word document:

1. Select **Capture Screen**.
2. Open Word.
3. Place the pointer in the document where you want to paste the image.
4. On the Word menu bar, select **Edit > Paste**.

Capture Window

Select **Capture Window** to copy the image of the currently active window on the tablet PC screen to the Windows clipboard.

To save or print the image, open an application which supports a screen image, such as Microsoft Word or Microsoft Paint, then paste the image.

For example, to copy the an image of the currently active window into a Word document:

1. Select **Capture Window**.
2. Open Word.
3. Place the pointer in the document where you want to paste the image.
4. On the Word menu bar, select **Edit > Paste**.

Tablet Display (Default)

When an optional display device, such as an external monitor or projector, is connected to the external monitor connector on the tablet PC:

To display the image only on the tablet PC:

- » Select **Tablet Display**.



Selecting **Tablet Display** turns off the Extended Desktop option.

External Display

When an optional display device, such as an external monitor or projector, is connected to the external monitor connector on the tablet PC:

To display the image only on the display device:

- » Select **External Display**.



Selecting **External Display** turns off the Extended Desktop option.

Dual Display (Default)

When an optional display device, such as an external monitor or projector, is connected to the external monitor connector on the tablet PC:

To display the image on the tablet PC and the display device:

- » Select **Dual Display**.



Selecting **Dual Display** turns off the Extended Desktop option.

Extended Desktop

The Extended Desktop option extends the display from the tablet PC screen onto the external monitor screen. For example, you could use the Extended Desktop item to display an entire spreadsheet. The left side columns could be displayed on the tablet PC screen and the right side columns could be displayed on the external monitor.



The Extended Desktop option is *not* supported when the tablet PC is in tablet PC mode.

To turn on the Extended Desktop option:

- » Select **Extended Desktop**.

DRAFT Revised: 9/22/04
File: Chap12.fm
PN: HP-367426-001

Q Menu Software

To turn off the Extended Desktop option:

1. Press the **Q** button.
2. Select **Tablet Display**, **External Display**, or **Dual Display**.

Presentation Mode On/Off (Default)



CAUTION: Presentation mode is integrated with the Q Menu and Quick Launch Button software. If this software is uninstalled or disabled, Presentation mode will not function.

Presentation mode provides the optimal configuration for displaying a presentation, such as a Microsoft PowerPoint presentation, on a projector or external monitor while displaying speaker's notes on the tablet PC.

To apply or reapply Presentation mode:

- » Select **Presentation Mode On**.

To close Presentation mode:

- » Select **Presentation Mode Off**.

For additional information about Presentation mode, refer to the [“Using Presentation Mode”](#) section in [Chapter 3, “Pointing Devices and Keyboard.”](#)

Portrait-Primary (Default)

To switch the image clockwise to portrait view from landscape view:

- » Select **Portrait-Primary**.

Landscape-Primary (Default)

To switch the image clockwise to landscape view from portrait view:

- » Select **Landscape-Primary**.

Portrait-Secondary

To switch the image counterclockwise to portrait view from landscape view:

» Select **Portrait-Secondary**.

The default Portrait-Primary item switches the image clockwise to portrait view. Left-handed users may find the Portrait-Secondary item, which switches the image counterclockwise to portrait view, more convenient.



HP recommends that you not use the Portrait-Secondary view while using the internal wireless. The positions commonly occupied by the tablet PC, external devices, and the user while the tablet PC is in the Portrait-Secondary view may obstruct the antennae.

For exact antennae locations, refer to [Chapter 1, “Component ID.”](#)

Landscape-Secondary

To switch the image counterclockwise to landscape view from portrait view:

» Select **Landscape-Secondary**.

The default Landscape-Primary item switches the image clockwise to landscape view. Left-handed users may prefer to use the Landscape-Secondary item, which switches the image counterclockwise to landscape view.



HP recommends that you not use the Landscape-Secondary view while using the internal wireless. The positions commonly occupied by the tablet PC, external devices, and the user while the tablet PC is in the Landscape-Secondary view may obstruct the antennae.

For exact antennae locations, refer to [Chapter 1, “Component ID.”](#)