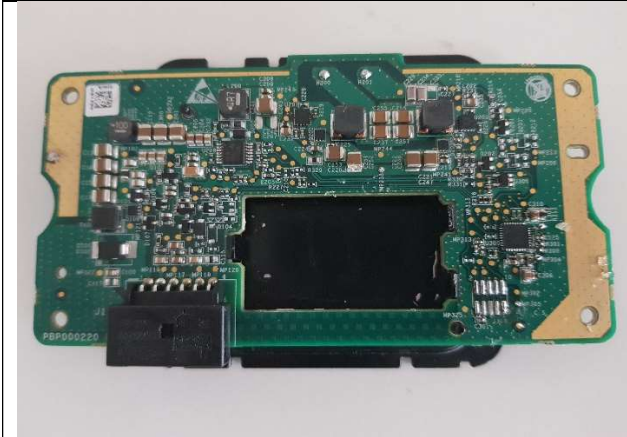
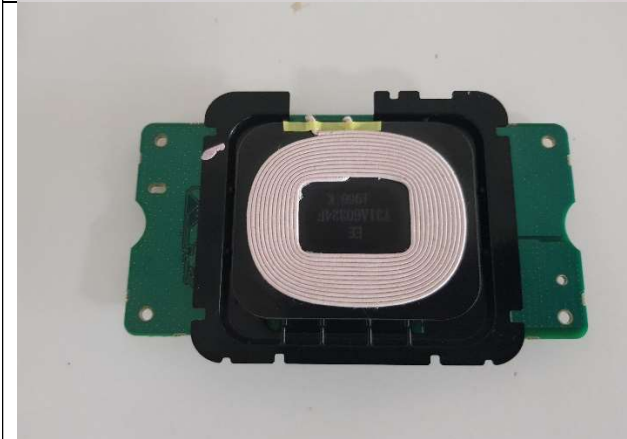


WCM – Internal and External Photos

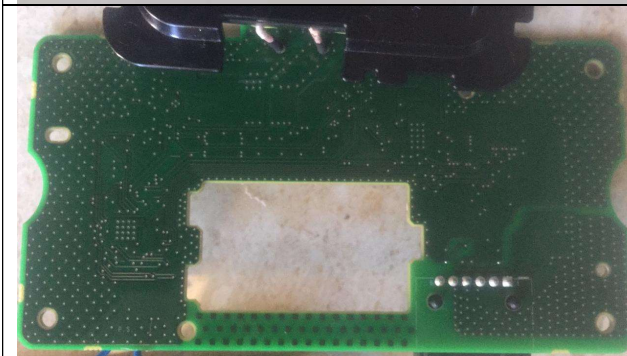
WCM part	Description
	Plastic Bottom cover
	Heatsink: it is an external part made of aluminium, will be placed between bottom cover and PCB.
	Plastic Top cover: Mobile phone will be placed on this part.



Wireless charger PCB board



WPC compliant coil: Coli wire with 105 stands of AWG 40.



Back picture of Wireless charger PCB board



Back picture of plastic cover.