


# Wuloo®

## Wireless Driveway Alarm

HVIN: MTY0102



 Email: [support@wulooofficial.com](mailto:support@wulooofficial.com)

 Facebook : [@WulooOfficial](https://www.facebook.com/WulooOfficial)

 Web: [www.wulooofficial.com](http://www.wulooofficial.com)

# Welcome

## Thank you for choosing Wuloo!

The driveway alarm is one of our latest products. It serves a wide variety of uses and has multiple features, including all of the following:

- Super long range of up to 1600 ft.
- wireless technology which works without Wi-Fi.
- Special code matching technology to avoid interference.
- The receiver has 4 levels of volume (including mute) and 16 kinds of chimes to choose from.
- The outdoor sensor cannot adjust the volume but can set the work mode (chime ON or OFF, light flashing ON or OFF). There are 12 kinds of chimes available, including some customized melodies like dog barks, police sirens, and gunshots.
- The sensor is equipped with an 1800mA rechargeable battery with a power shortage indicator built into the receiver screen.
- Long battery life of up to 12 months on a full charge (depending on usage frequency).
- Weatherproof, So it can work well under rain and snow.
- Expandable, Can connect to more sensors and receivers to expand the detection range (up to 8 sensors).

We are dedicated to providing our customers with 100% satisfactory service. Please feel free to contact us if you have encountered any problems with your purchase. Our professional and friendly staff will be happy to assist you.

Email: [support@wulooofficial.com](mailto:support@wulooofficial.com)      Facebook : [@WulooOfficial](https://www.facebook.com/WulooOfficial)

Activate and extend your warranty: [www.wulooofficial.com](http://www.wulooofficial.com)

Sincerely  
Wuloo Official

# Contents

## 1. What's Included in the Box?

1.1 Sensor Overview	01
1.2 Receiver Overview	03

## 2. Getting Started

2.1 Connecting the Receiver to Power	04
2.2 Setting the Sensor (Melody/Work Mode/Sensitivity)	04
2.3 Setting the Receiver	05
2.4 Pairing	05
2.5 Charge the Sensors	06
2.6 Install the Sensor (Test Before Installing)	06
2.7 Usage Scenario	06

## 3. Additional Notes 07

## 4. Troubleshooting 08

## 5. Adding Additional Sensors or Receivers

5.1 Add More Sensors	10
5.2 Add More Receivers	11
5.3 Clear Pairing History	12

## 6. Questions & Answers 13

# 1. What's Included in the Box?



Sensor



Receiver



Screwdriver



Screws & Anchors



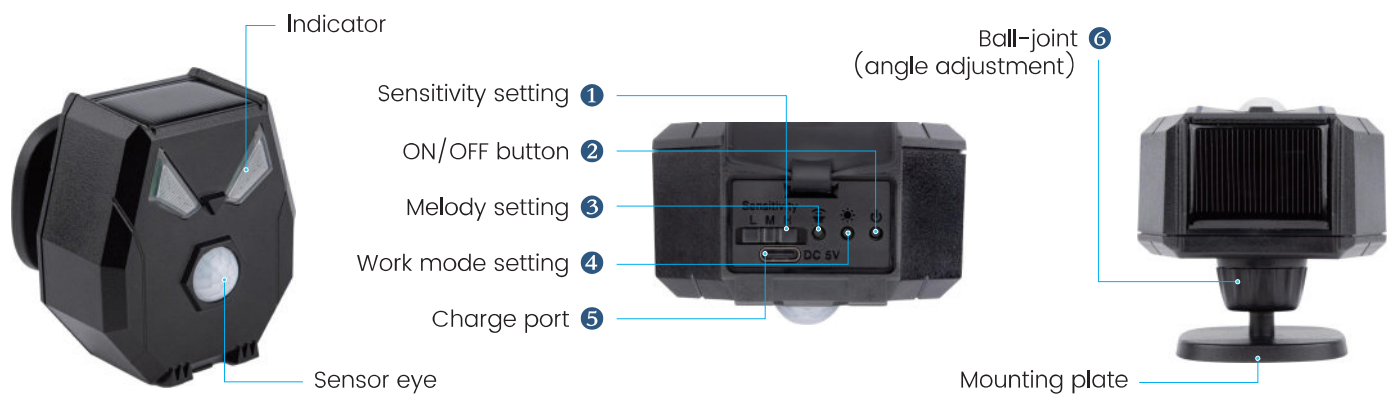
Cable

## 1.1 Sensor Overview

This sensor is designed for outdoor use. The sensor remains in sleeping mode throughout most of the day and is activated when it detects movement. When it is activated, the sensor will sound an alarm (the sensor's alarm light and alarm chime can be turned ON/OFF) and transmit a signal to the receiver. The receiver will ring and display the corresponding channel number after receiving the signal.

The sensor can continue to work up to 12 months after it has been fully charged. However, sensors are only charged to about 20% power when they leave our factory, so you will need to charge it before installing.

To increase the detection range, you can install more sensors to expand your driveway alarm system. You may expand to up to 8 sensors in a single system.



**① Setting the sensitivity of sensor:** There are 3 sensitivity levels in the sensor. You can choose your preferred sensitivity level to avoid false alarms or missed alarms.

**② ON/OFF button:** Press & hold the button for 3 seconds to TURN ON or TURN OFF the Sensor.

**③ Melody setting:** Press the button to choose a different melody. There are 12 different melodies available.

**④ Work mode setting:** The sensor has 4 different work modes. Includes light flash and alarm sound, light flash only, alarm sound only, and mute (no sound no flash).

**⑤ Charge the sensor:** please use the DC5V adapter(not included) and cable that came with the package to charge the sensor. Before installation, remember to fully charge the sensor.

Indicator: Low power—red flash

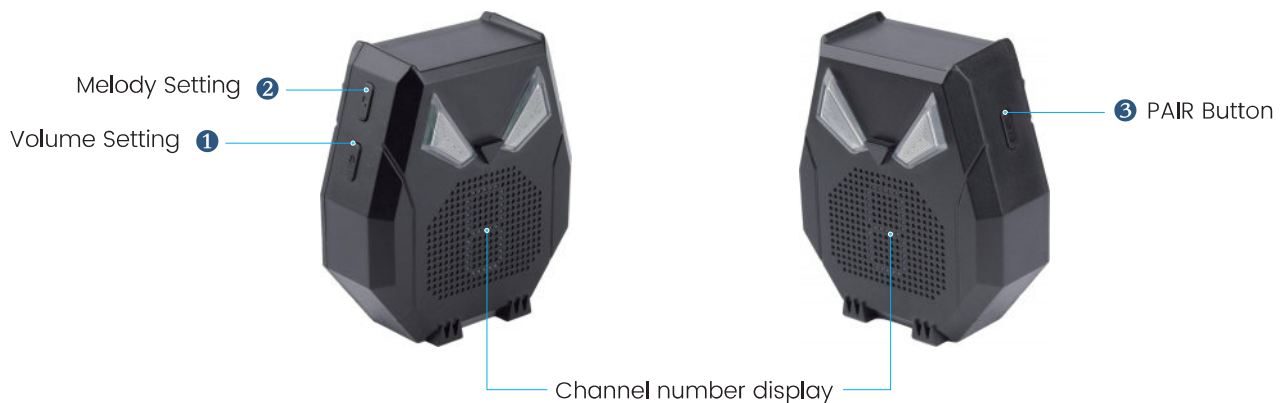
Charging—red light

Fully charged—green light

**⑥ Angle adjustment:** Adjust to an appropriate sensor angle by using the ball-joint for better results.

## 1.2 Receiver Overview

The receiver will continue to work inside of the home. It need to plug in AC power (110V-220V) all the time. The receiver has 4 levels of volume available (including mute) and 16 kinds of chimes to choose from.



**① Volume Button:** Press once to select the volume. There are 4 volume levels (including mute). Press the PAIR & Volume button at the same time to clear the pairing history, and you will hear “pairing cleared.”

**② Melody setting button:** Press once to select different melodies. The receiver has a total of 16 ringtones to choose from. You need to enter pairing mode if you want to set different melodies for different sensors.

**③ PAIR button:** Press & hold the button to hear the “welcome” prompt sound to enter pairing.

Short press to select the channel when pairing mode.

Press the key combination PAIR+Volume button to clear the historical pairing record, and you will hear “pairing cleared.”

When you hear the ringtone, quickly press to stop the ringtone.

## 2. Getting Started

The basic steps for installing and setting up your driveway alarm are as follows:

2.1 Connecting the Receiver to Power → 2.2 Setting the Sensor (Melody/Work Mode/Sensitivity)  
2.3 Setting the Receiver → 2.4 Pairing → 2.5 Charge the Sensors →  
2.6 Install the Sensor (Test Before Installing)

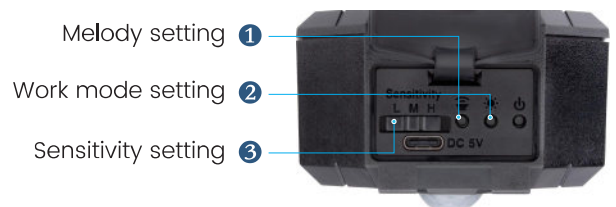
### 2.1 Connecting the Receiver to Power

The receiver will continue to work inside of the home. It needs to be plugged in to AC power (110V-220V) all the time.



### 2.2 Setting the Sensor (Melody/Work Mode/Sensitivity)

The sensor will arrive pre-configured to a default setting if you buy the set which includes the sensor and the receiver together. You can set the chime, work mode, and sensitivity of the sensor.



**① Melody setting:** Press the button to choose a different melody. There are 12 melodies available.

**② Work mode setting:** The sensor has 4 different work modes. Includes light flash and alarm sound, light flash only, alarm sound only, and mute (no sound no flash).



**③ Sensitivity setting:** There are 3 settings for sensitivity levels. The settings are H (High), M (Middle), and L (Low). The higher the sensitivity, the more the sensor can detect movements that are smaller or farther away.

**“High” Sensitivity level:** Detection range 0– 30 ft. (default)

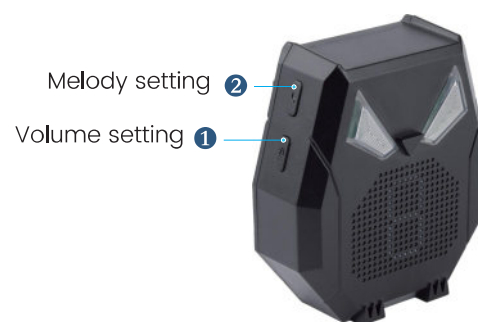
**“Middle” Sensitivity level:** Detection range 0– 24 ft.

**“Low” Sensitivity level:** Detection range 0– 15 ft.

## 2.3 Setting the Receiver

**① Volume setting:** Press once to select the volume. There are 4 volume levels for selection (including mute)

**② Melody setting:** Press once to select different melodies. The receiver has a total of 16 ringtones to choose from; you need to enter pairing mode if you want to set different melodies for different sensors.



## 2.4 Pairing

Up to 8 sensors can be connected to one receiver at the same time, and multiple receivers can be connected to one sensor. The sensor will arrive pre-configured to a default pairing setting if you buy the set of the sensor and receiver together. You will only need to reset the pairing if you want to change to a different setting or if you only purchased the sensor without the receiver. For specific pairing operation methods, please refer to Chapter 5 to add more sensors or receivers to your current system.



plug in AC power, Placed the sensor upside down on the table



press & hold the PAIR button to enter pairing mode, set melody and channel number



wave your hand slowly to activate the sensor



Pairing success



## 2.5 Charge the Sensor

The sensor can continue to work up to 12 months after it has been fully charged. However, sensors are only charged to about 20% power when they leave our factory, so you will need to charge it before installing.

Sensor power indicator: low power—red flash; charging—red light; charge finished—green light.



Charge the sensor before installing

**Note:** When the sensor is low on power, the receiver will display “L,” indicating that one of your sensor needs to be charged. then you need to go outside to check which specific sensor is short of power.

## 2.6 Install the Sensor (Test Before Installing)

After the sensor is fully charged, you can install the sensor in an outdoor setting where you want to detect motion. You can do this with the included screwdriver. For better security, you can adjust the angle of the sensor eye by moving the ball-joint after you’ve completed installation.



Install the sensor with the included screws and screwdriver. Use the ball-joint to adjust the angle of sensor.

## 2.7 Usage Scenarios

1. After you have received your package, open it and install the sensor outside where you want to detect motion. (The sensor will be in its default setting when it leaves the factory.)
2. Once the sensor detects movement (e.g., animals, people, or cars), the sensor will send a signal to the receiver.
3. After the receiver obtains the signal from the sensor, the corresponding sensor number will display in the receiver and will ring with the melody you previously set for the corresponding sensor.

### 3. Additional Notes

- 1.** The sensor has 3 different sensitivity settings (High, Middle, Low). If you find that your sensor often sounds false alarms due to high sensitivity, you can lower the sensitivity for better results. Also, if you find that the sensor often misses the alarms, you can increase the sensitivity to a higher setting.
- 2.** This sensor features our latest technology, which has been improved to avoid false alarms like falling leaves or mosquitoes. You can get ideal results by setting the sensitivity level to your preferences.
- 3.** After detecting motion, the sensor can “sleep” for 3 seconds, allowing an object to pass through the field of vision without setting the alarm off again.
- 4.** Please test if the sensor can work properly in the selected position before installing the sensor. Also, please avoid mounting the sensor in direct sunlight, as this may cause false alarms or damage the sensor eye.
- 5.** Charge the sensor before installation to guarantee that it can work for as long as possible.

If you encounter any problems with this device, please contact us with your order ID. We will do our best to resolve your issue. **Email:** [support@wulooofficial.com](mailto:support@wulooofficial.com). **Facebook page:** [@WulooOfficial](https://www.facebook.com/WulooOfficial).

Activate and extend your warranty: [www.wulooofficial.com](http://www.wulooofficial.com)

## 4. Troubleshooting

Most issues that arise can easily be resolved by changing the settings on your products.

Please read this user manual carefully before you use this machine. Use the table below to find your exact issue and the possible solutions for it. If you need more help, you are welcome to contact us via our customer service email at: [Email: support@wulooofficial.com](mailto:support@wulooofficial.com). Facebook page: [@WulooOfficial](https://www.facebook.com/WulooOfficial). Web: [www.wulooofficial.com](http://www.wulooofficial.com)

Issue	Cause	Solution
False alarm, but there is nothing in front of the sensor when we check it	The sensitivity may be too high, causing little things like leaves or flies to be detected	Switch the sensitivity to a lower level
	The sun is shining directly into the sensor's eye. The sunlight may be increasing the sensor's temperature, leading to false alarms	Install the sensor in another place that keeps direct sunlight from entering the sensor eye
No alarm: people walk in front of the sensor, but the sensor isn't making noise	The sensitivity is too low	Switch the sensitivity to a higher level
	The angle of the sensor is not appropriate	Adjust the angle by using the sensor's ball-joint

Issue	Cause	Solution
The battery life of the sensor is short and it will power off soon	The sensor was installed before being fully charged	After receiving the package, please fully charge the sensor before beginning installation
	The sensor has been placed in a high-traffic area; it may detect too many movements in a short amount of time.	Please install the sensor in an area with lower traffic. Areas with high-traffic where many people are walking are not ideal for placement
	Work in the sound & light mode with a long-term melody	Set the sensor to light only mode or mute mode, or choose a shorter melody
The sensor doesn't work	The sensor isn't connected to the inside battery	Please check the battery connection inside the sensor
	The battery of the sensor has run down	Please recharge the sensor
	The sensor has been turned OFF and has not been turned back on	Press & Hold the POWER button to turn on the sensor

## 5. Adding Additional Sensors or Receivers

If you want to build a larger detection range, you can expand your alarm system by adding more sensors. This alarm system can expand to up to 8 sensors all on the same receiver.

And you can also add more receivers if you want to hear the alarm in other rooms.

### 5.1 Add More Sensors

1. Buy an additional sensor in our store, and add it to your previously purchased alarm system.
2. Charge the new sensor before setting it up.
3. Press & hold the PAIR button to enter pairing mode and set the melody and channel number (Strongly recommended to set different channel numbers and ringtones for different sensors to distinguish the monitoring area).
4. Wave your hand in front of the new sensor to make it detect movement (Strongly recommended to placed the sensor upside down on the table before activate it for testing, to avoid it detecting movement before you finish setting the melody and channel number), and then the receiver will sound the corresponding melody and display the corresponding channel number, indicating that the pairing is successful. (Note: Be sure to set the channel number and ringtone first, then activate the sensor, and then pair).
5. After the pairing is completed, press the volume button of the receiver or wait for 5 seconds, and then you can exit the pairing when you hear the prompt sound "pairing finished."



Buy a sensor separately in our store



Charge the new sensor



press & hold the PAIR button to enter pairing mode, then set the melody and channel number



pick up the sensor and wave your hand slowly to activate the sensor



Pairing finished

## 5.2 Add More Receivers

1. Buy an additional receiver in our store, and add it to your previously purchased alarm system.
2. Plug the new receiver into AC power.
3. Press and hold the PAIR button of the new receiver to enter the pairing mode, and set the ringtone and channel number (It is recommended to set each sensor on the same channel and ringtone on different receivers).
4. Wave your hand in front of the sensor to make it detect movement, and then the receiver will sound the corresponding bell and display the corresponding channel number, indicating that the pairing is successful.
5. In the same way, pair each sensor with a new receiver. It is possible to connect multiple receivers to one sensor and hear alarms in different places.
6. After the pairing is completed, press the internal volume button or wait for 5 seconds, and then you can exit the pairing when you hear the prompt sound "pairing finished."



Buy a receiver separately in our store



Receiver plug in the AC power



press & hold the PAIR button of new receiver to enter pairing mode, then set the melody and channel number



pick up the sensor and wave your hand slowly to activate the sensor



Set another melody and channel number to pair other sensors (if you have) with the new receiver



Pairing finished (Will exit pairing automatically after 5 seconds or click the Volume button to exit immediately)

## 5.3 Clear Pairing History

If you accidentally mess up the pairing or you want to rearrange your sensor channel number, you can choose to clear the pairing history and then pair again.

Press and hold the receiver PAIR button + VOLUME button for 2 seconds at the same time, and hear the prompt sound “pairing cleared.” Then the pairing record will be cleared.

### Notes:

1. The channel number for the new sensor should be different from the previous sensor as 1 sensor can correspond to 1 channel number only in 1 receiver.
2. It is recommended to set the same channel and ringtone on different receivers for each sensor when expanding more receivers for easy identification.
3. When pairing, pay attention to select the channel number and ringtone first, and then activate the sensor, and then pair: this operating sequence is very important.
4. If the pairing is out of order, you can clear the pairing and then rearrange the pairing. Press and hold the receiver PAIR button + VOLUME button for 3 seconds at the same time to clear the pairing record.



Press & hold PAIR button + volume button for 2 seconds at the same time



## 6. Questions & Answers

Here we have sorted out some of the common problems encountered by our customers. We have provided detailed answers for your reference that can hopefully help you find all the solutions to your issues.

**Question 1:** My alarm has not worked in several months. What should I do?

**Answer 1:** For this kind of problem, we suggest the following:

**1:** Check if the sensor is turned off. The sensor can work for up to 12 months after it has been fully charged. However, sensors are only charged to about 20% power when they leave our factory, so you will need to charge it fully before installation. If the battery is too low, it will automatically shut down. There is a power button at the bottom of the sensor: press & hold it for 3 seconds turn it on.

**2:** Check to see if there is a red flash in the sensor eye when movement should be detected. If it has a red flash, you can try pairing it with the receiver again. For more information about how to pair, please review section 5.1 of this manual.

**3:** If you have tried the 2 methods above and are still encountering the problem, you are welcome to contact us via email or Facebook to receive more help. We will provide the best support to solve your issue. Please attach your order ID as well as detailed information about your problem. Also, including pictures or video in your request is often very helpful in allowing us to find your best solution.

**Question 2:** The working range is too short. It is not 1600 ft.

**Answer 2:** The working range of 1600 ft. applies when the device is tested in an open space. The range will change depending on your unique circumstances. Obstructions like a thick forest or metal barrier will decrease the range. For best results, please test your area's range before installing the sensor. Through vigorous testing, we've found this alarm system to be better than other driveway alarm products.

**Question 3:** Sometimes the alarm works well and sometimes it doesn't. Why?

**Answer 3:** This issue is often caused by improper sensitivity settings. Please adjust the sensitivity for improved results.

If you have any additional concerns, please feel free to contact us via our customer service at:

**Email: [support@wulooofficial.com](mailto:support@wulooofficial.com).**

**Facebook page: [@WulooOfficial](#).**

**Activate and extend your warranty: [www.wulooofficial.com](http://www.wulooofficial.com)**

We will do our best to answer within 12 business hours.  
Thank you very much for choosing Wuloo!

## FCC Warning

This device complies with part 15 of the FCC Rules. Operation is subject to the following two conditions: (1) This device may not cause harmful interference, and (2) this device must accept any interference received, including interference that may cause undesired operation.

Any Changes or modifications not expressly approved by the party responsible for compliance could void the user's authority to operate the equipment.

**Note:** This equipment has been tested and found to comply with the limits for a Class B digital device, pursuant to part 15 of the FCC Rules. These limits are designed to provide reasonable protection against harmful interference in a residential installation. This equipment generates uses and can radiate radio frequency energy and, if not installed and used in accordance with the instructions, may cause harmful interference to radio communications. However, there is no guarantee that interference will not occur in a particular installation. If this equipment does cause harmful interference to radio or television reception, which can be determined by turning the equipment off and on, the user is encouraged to try to correct the interference by one or more of the following measures:

- Reorient or relocate the receiving antenna.
- Increase the separation between the equipment and receiver.
- Connect the equipment into an outlet on a circuit different from that to which the receiver is connected.
- Consult the dealer or an experienced radio/TV technician for help.

This equipment complies with FCC radiation exposure limits set forth for an uncontrolled environment. This equipment should be installed and operated with minimum distance 20cm between the radiator & your body.

## IC Warning

- English: This device contains licence-exempt transmitter(s)/receiver(s) that comply with Innovation, Science and Economic Development Canada's licence-exempt RSS(s). Operation is subject to the following two conditions:

1. This device may not cause interference.
2. This device must accept any interference, including interference that may cause undesired operation of the device.

- French: Cet appareil contient des émetteurs/récepteurs exemptés de licence qui sont conformes aux RSS exemptés de licence d'innovation, sciences et développement économique Canada. Le fonctionnement est soumis aux deux conditions suivantes:

1. Cet appareil ne peut pas causer d'interférences.
2. Cet appareil doit accepter toute interférence, y compris les interférences qui peuvent causer un fonctionnement indésirable de l'appareil.

This equipment complies with ISED radiation exposure limits set forth for an uncontrolled environment. This equipment should be installed and operated with minimum distance 20cm between the radiator & your body.

Ce matériel est complété par une exposition de rayonnements ISED pour un environnement naturel. Ce matériel doit être installé et se faire avec une distance minimale de 20cm entre les radiateurs et les autresYour body shop.