



Made in Korea

IEEE 802.11b/g standard



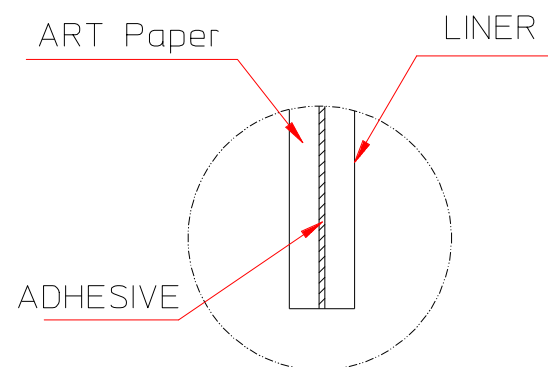
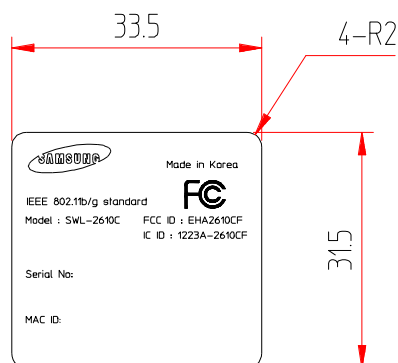
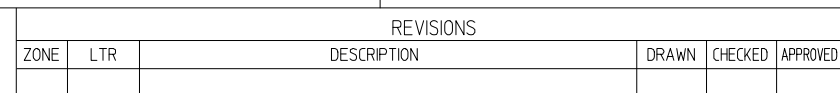
Model : SWL-2610C

FCC ID : EHA2610CF

IC ID : 1223A-2610CF

Serial No:

MAC ID:



- 1.Material: ART–Paper + Laminate, t0.1
- 2.Back side has to be glued.
- 3.After taking off the Label attached on the "Blue Copy Paper", at least 95% back surface of the Label must be blued.

DET	NAME	MATERIAL	QTY	FINAL SIZE	STOCK SIZE	REMARK
PART LIST						
SIGNATURES		MO/DA/YR	<div>SAMSUNG</div>  Label Bottom (SWL-2610C) BM68-00150C			
DRAWN						
CHECKED						
ENGINEER	Bu-Whan Hyun	05/01/31				
APPROVED	Woo-Hee Lee	05/01/31				
* SURFACE ROUGHNESS						
U.O.S	6.3a (250s)	DEPT	PDM NO.		PART NO.	
F	3.2a ~ 6.3a (FINISH)	BM68-00150C				
FF	1.6a ~ 3.2a (FINE FINISH)					
G	0.2a ~ 0.6a (GRINDING)					
LP	0.1a ~ 0.2a (LAPPING)					
			SCALE	/	WT	kg
			SHEET OF			

A3 (297 x 420)

A-10-011(04.05.17)0

3

---

2

---

1



**Intermec**

**Intermec  
Technologies  
Corporation**

Systems and Solutions  
550 Second Street S.E.  
Cedar Rapids, IA 52401  
Tel 319 369-3100  
Fax 319 369-3299  
[www.intermec.com](http://www.intermec.com)

**Date: 23-MAR-2005**

**Northwest EMC, Inc.  
Telecommunications Certification Body**

**Reference: Intermec Model 2610CF Compact Flash Radio Card  
FCC ID: EHA2610CF**

**Intermec Technologies Corporation  
FRN: 0003-7251-65 (CR) or 0003-7296-54 (Everett)**

Dear Sirs,

Intermec Technologies Corporation would like to attest that the Intermec model 2610CF compact flash radio card is identical to the Samsung model SWL-2610C compact flash radio card. Both radio cards are mechanically and electrically identical, and will continue to be so in the future. All of the exhibits on file with the Commission will be representative of the radio.

Please contact me if you have any questions regarding this attestation.

Sincerely,

Scott Holub  
Regulatory Compliance Engineer  
Intermec Technologies Corporation  
Tel: 319 369-3865  
Fax: 319 369-3299  
[scott.holub@intermec.com](mailto:scott.holub@intermec.com)