

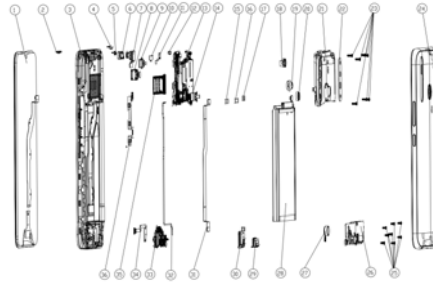
# **User Manual**

## **Mobile Phone Infinix X650B**

FCC ID: 2AIZN-X650B

INFINIX MOBILITY LIMITED

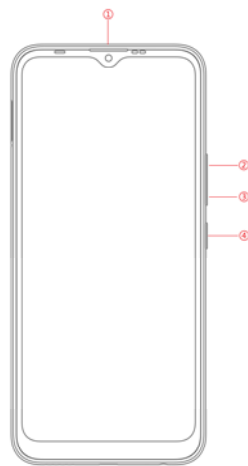
## Explosion diagram specification



1	FL(CTP+LCM) 6.52HD+ black TM	2	RECDeco part black
3	F hsgasm blackPC + 20%GF + aluminiumalloy	4	F flash lens translucent
5	LT sensor light guide translucent	6	REC 1206W H20 broadband H:SPL 50mW AC
7	Cam FF 8M GC8034 TXD	8	Cam AF 13M S5K3L6 ST
9	Cam FF 8W GC6153 CSP W6003 XCG	10	FPC REC
11	REC ED FABRIC	12	Distance rubber black
13	PCBA MB H8029 A1 16GB+1GB	14	Cam FF 2M SP250A LHYX
15	MAIN FPC con rubber black	16	LCM FPC con rubber black
17	Bat con rubber black	18	R three Cam Rubber 8W black
19	R flash lens translucent	20	R vice CamRubber 2M black
21	UP frame asm midnight black	22	R Cam lens KN3 0.5 black
23	machine screw M1.4 * L3.5 * D2.5 * H0.5 black	24	Bat cover asm midnight black

25	mc screw M1.4*L2.5*D2.5*H0.5 silver glue	26	SPK 1511 BOX 6720 H3.8 HS
27	MOT_FPC_0827_L4.8_H_AWA	28	BAT infinix BL 49FX 4900mAh LW
29	USB Rubber black	30	Headset Rubber black
31	FPC main	32	Coaxial cable
33	PCBA SUB H6110 1 A	34	FPC_SPK
35	card holder midnight black	36	FPC_sidekey

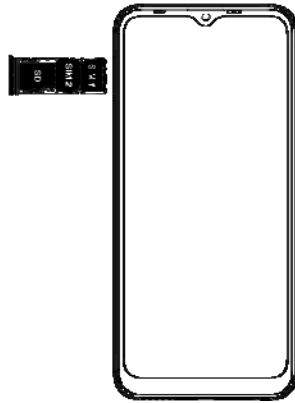
## Know your phone



- 1. Front camera
- 2. Volume + key
- 3. Volume - key
- 4. Power key

## SIM/SD card installation

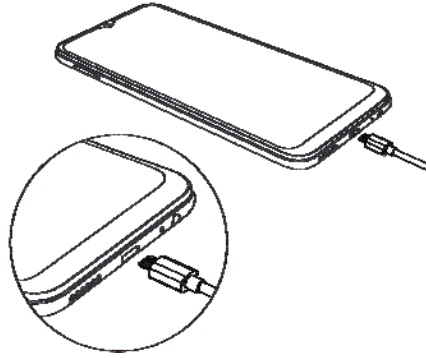
1. Power off mobile.
2. Refer to the following picture for SIM / SD card installation.



## Charging the phone

You can charge your device using a charger or by connecting it to the computer using a USB cable (comes with the phone).

1. Please remind the front and back of the plug.
2. Use only INFINIX charger and cables. Other chargers or cables may damage the device. This will invalidate your phone warranty.



**Emergency call**

If any emergency arises, dial 112/911 (or other emergency call number) for emergency help.

Due to the nature of cellular networking, the success of emergency call is not guaranteed.

**FCC Warning:**

This device complies with part 15 of the FCC Rules. Operation is subject to the following two conditions: (1) This device may not cause harmful interference, and (2) this device must accept any interference received, including interference that may cause undesired operation.

Any Changes or modifications not expressly approved by the party responsible for compliance could void the user's authority to operate the equipment.

This equipment has been tested and found to comply with the limits for a Class B digital device, pursuant to part 15 of the FCC Rules. These limits are designed to provide reasonable protection against harmful interference in a residential installation. This equipment generates uses and can radiate radio frequency energy and, if not installed and used in accordance with the instructions, may cause harmful interference to radio communications. However, there is no guarantee that interference will not occur in a particular installation. If this equipment does cause harmful interference to radio or television reception, which can be determined by turning the equipment off and on, the user is encouraged to try to correct the interference by one or more of the following measures:

- Reorient or relocate the receiving antenna.
- Increase the separation between the equipment and receiver.
- Connect the equipment into an outlet on a circuit different from that to which the receiver is connected.
- Consult the dealer or an experienced radio/TV technician for help.

The SAR limit of USA (FCC) is 1.6 W/kg averaged over one gram of tissue. Device types X650B (FCC ID: 2AIZN-X650B) has also been tested against this SAR limit. The highest reported SAR values for head, body-worn accessory, and product specific (Hotspot) are 1.11 W/kg, 0.72 W/kg, and 0.72 W/kg respectively. The Max simultaneous SAR is 1.35 W/kg. This device was tested for typical body-worn operations with the back of the handset kept 10mm from the body. To maintain compliance with FCC RF exposure requirements, use accessories that maintain a 10mm separation distance between the user's body and the back of the handset. The use of belt clips, holsters and similar accessories should not contain metallic components in its assembly. The use of accessories that do not satisfy these requirements may not comply with FCC RF exposure requirements, and should be avoided.

5G

For 5150-5250 and 5725-5850 frequency band,

Operations in the 5150-5250 and 5725-5850 band are restricted to indoor usage only.

5G:

Any emission is maintained within the band of operation under all conditions of normal operation. The max. frequency stability is less than 20ppm.