

Copyright

© 2003 AirPrime, Inc. All rights reserved.

Table of Contents for Help File

- I. Welcome to the Mobile Connection Manager
 - A. About this Guide
 - B. Checklist
 - C. Owner Records
 - D. About your PC3220 Wireless PC Card Modem
 - E. What is the Mobile Connection Manager?
 - F. Caring for your PC3220
 - G. What is CDMA
 - H. The Basics
 - II. Installing the Mobile Connection Manager and PC3220 on Your Notebook PC
 - A. System Requirements
 - 1. Cautions and Warning
 - 2. Uninstalling the software¹
 - B. Installing the Mobile Connection Manager Software
 - 1. Installing the Fourelle Venturi 2.1 Data Compression Software
 - C. Connecting the PC3220 and Drivers to your Notebook PC
 - D. Activating Your PC3220
 - 1. Auto Activation
 - 2. Troubleshooting
 - 3. Manual Activation
 - 4. Establishing a Connection after Activation
 - E. Removing the PC3220 from your Notebook PC
 - F. Establishing a Connection
 - 1. Disconnecting from the network
 - G. Exiting the Mobile Connection Manager
 - III. Using the Mobile Connection Manager (My Mobile Connection Manager)
 - A. Understanding The Indicator Area and Icons
 - 1. Signal Strength Indicator
 - 2. Service Indicator
 - 3. Data Compression
 - 4. Roaming Status
 - 5. Connection Indicator
 - 6. Connection Time
 - 7. Byte Counter
 - 8. Service Status Dialog Box
 - B. Understanding the Action Buttons
 - 1. Settings
 - a. Settings: General Tab
 - b. Settings: Connection Profiles Tab
 - c. Settings: About Tab
 - 2. Call Log
 - 3. Help
 - 4. System Tray Shortcut
-

IV. System Tray Mode (Connection Status Icon and Menu)

- A. System Tray Icon
- B. System Tray Menu

V. Understanding Alert Windows

- A. Premium Service Alert
- B. Call Dropped Alert
- C. Software Mismatch Alert
- D. Power On Card Alert
- E. Connection in Progress Alert
- F. Delete Connection Profile Confirmation
- G. Reset Call Log Information

VI. Networking and Dial-up Connections

- A. Windows Networking

VII. Frequently Asked Questions

VIII. Regulatory Information and Safety and Hazards

IX. Technical Specifications

- A. Environmental Specifications
- B. Radio Frequency and Electrical Specifications
- C. Software Specifications
- D. Mechanical Specifications

X.. Licensing Agreement

XI. Index

I. Welcome to the Mobile Connection Manager

Congratulations and thank you for purchasing the PC3220 Wireless PC Card Modem! The PC3220 is a dual band CDMA2000 1X product that enables you to communicate wirelessly from your laptop. Now that you are equipped with a wireless modem, you no longer need to carry chargers, cables, telephone jack converters, and batteries.

This product is simple to install and use. The Mobile Connection Manager software allows you to easily monitor your connections and customize your settings.

Note:

Before using the PC3220, you MUST review the Safety Information outlined on page XX.

A. About this Guide

This User's Guide contains all the information you will need to properly install and use your PC3220 Wireless PC Card Modem. Before you can begin using the PC3220, it is essential that you follow the proper instructions for installation.

You must load the Mobile Connection Manager software located on the CD-ROM that was included in your kit before you insert the PC3220 into your notebook PC. This initial setup process just takes a few minutes and you'll soon be on your way to wireless freedom.

B. Checklist

Make sure that the following items are included in the kit when you unpack it:

1. A PC3220 Wireless PC Card Modem
2. The Installation CD which contains the Mobile Connection Manager Software and the Fourelle Venturi 2.1 Data Compression Software
3. A Quick Start Guide

C. Owner Records

Be sure to keep handy your PC Card's ESN number, located at the bottom of your card, for easy reference. Record your information here for easy reference:

ESN Number: _____

Phone Number: _____

Account Number: _____

D. About your PC3220 Wireless PC Card Modem

The PC3220 is a wireless PC Card modem designed to fit into a Type II PC Card slot available on most notebook PCs. This uniquely designed card allows you to connect to the Internet, send and receive email efficiently, connect to your company's network, and maximize productivity when away from the office.

1. Power Management

- a. Designed to take advantage of the power management and system overhead benefits offered by the 32-bit CardBus electrical interface that extends battery life.



CardBus: another name for "advanced PC Card," the CardBus interface works at lower battery voltage and operates at a greater speed than the standard PC Card interface.

2. Unique Antenna Design

- a. The PC3220 includes a patent-pending, proprietary antenna design that optimizes data rate transfer speeds, sensitivity, and increases power efficiency.

3. Other Features and Benefits

- a. A Type II PCMCIA format supporting the CardBus I/O interface
- b. Supports North American CDMA Cellular (800 MHz) and PCS (1900 MHz) bands- (analog not supported)
- c. Based on the QUALCOMM MSM5100 chip set
- d. Supports IS-95A/B and cdma2000 1XRTT Release 0
- e. Optimized data rates of up to 153.6 kbps on both the forward and reverse links
- f. Provides dial-up, 3G and 2G services

E. What is the Mobile Connection Manager?

The Mobile Connection Manager is an application designed to assist you in managing the PC3220. With this application you can easily monitor and customize your connections. The Mobile Connection Manager Software guides you through the wireless connection process. Similar to a mobile phone display, the user interface of the Mobile Connection Manager instructs you when to insert the PC3220 into your laptop, advises you on network availability, displays the time of your session and amount of data being transferred and received, and when your connection becomes dormant. Other features allow you to customize your settings, review your connection history, and access a digital help file.

F. Caring for your PC3220

Storage:

1. When not in use, fold the antenna down and store in a compartment where the card can be protected from being crushed or broken.
2. Do not apply adhesive labels to the PC3220. This may cause the card to jam inside the PC Card slot of your notebook PC.
3. The antenna extends freely, do not forcefully hyper-extend the antenna. This may cause it to break.
4. The PC3220 should easily fit into the PC Card slot. Forcing the PC3220 into the PC Card slot may cause considerable damage.
5. Your PC3220 should be stored in a dry and clean place. Protect your card from liquids, dust and excessive heat.

G. What is CDMA?

1. Your PC3220 operates on a wireless cellular network called CDMA (Code Division Multiple Access). CDMA is a digital spread-spectrum wireless technology that offers reliable, high speed bi-directional throughput of up to 144 kbps for email, corporate databases and all the services of the Internet. The PC3220 is a high performance card that enables you to both send and receive data/email at maximum network rates.
2. Often times when using a dial-up connection, a "network busy" signal appears. That's because there are "bottlenecks" slowing down the network. With the spread spectrum technology of CDMA these frustrating bottlenecks are eliminated. In fact, CDMA technology allows a network to handle more calls than competing digital technologies.

3. **What about privacy?** The secure CDMA network is designed with digital coding that is recognized only by the base station and unintelligible to eavesdroppers.

For more information on CDMA, visit the CDMA Development Group website:
www.cdg.org

H. The Basics

Before you can begin using the PC3220 you will need to load the software on your notebook PC and configure the PC3220. Here is a brief overview of the steps outlined in the next section:

1. **Install** the Mobile Connection Manager software, located on the Installation CD
2. **Insert** the PC3220 and **Install** the drivers into your notebook's PC Card slot when prompted by the Mobile Connection Manager
3. **Activate** your account when prompted by the Activation Wizard
4. **Connect** to your Service Provider's high-speed 1XRTT CDMA Network

CAUTION:

Do not insert the PC3220 into your notebook's PC Card slot until you are prompted to do so by the Mobile Connection Manager software wizard. Failure to do so will result in fatal errors to your PC. Follow the installation guidelines outlines in **section 2: Installing the Mobile Connection Manager and PC3220 on your Notebook PC.**

II. Installing the Mobile Connection Manager and PC3220 on Your Notebook PC

CAUTION:

Do NOT insert your PC3220 until you have installed the Mobile Connection Manager software onto your notebook PC.

WARNING:

Once the card is inserted, do not physically remove the PC3220 from the PC Card slot until you have completed the [Unplug/Eject](#) process. Removing the card improperly may cause a fatal error to your PC.

Note:

If you have previous versions of the Mobile Connection Manager or Fourelle Venturi applications installed on your notebook PC, you will need to remove the application(s) by utilizing the **Add/Remove Programs** Windows utility. Once removed, proceed with the installation procedures of the current version located on your Installation CD.

Uninstalling the Mobile Connection Manager and/or Fourelle Venturi software:

1. Go to: **Start>Control Panel>Add/Remove Programs**
2. Select Mobile Connection Manager or Fourelle Venturi 2.1 and click **Change/Remove**
3. Next select **Remove** and click **OK** to proceed when prompted
4. You will need to restart your notebook PC in order to complete uninstallation

A. System Requirements

Before you begin the installation process, check that your notebook PC supports the following system requirements.

1. Your PC3220 functions in notebook PCs with these Windows® operating systems:
 Windows® 98SE
 Windows® ME
 Windows® XP
 Windows® 2000

Note:

This card is not designed to function in handhelds and Pocket PCs and does not support Windows CE.

2. In order to install the PC3220 and the Mobile Connection Manager software, these minimum system resources are required:

Card slots:	Type II PC Card slot (Cardbus)
Disk-Drive:	CD-ROM
Memory:	32 MB
Disk Space:	50MB
Processor:	Pentium 150MHz or higher

Note - Windows 98:

You may need the original Microsoft Windows 98 installation CD.

Note:

If you are planning to upgrade your Microsoft operating system, you will need to uninstall the Mobile Connection Manager first. Once the Mobile Connection Manager is removed, proceed with the operating system upgrade. After these steps are complete, you will need to reinstall the Mobile Connection Manager.

B. Software Installation**Installing the Mobile Connection Manager**

The installation CD-ROM that was included in the PC3220 kit is equipped with the Mobile Connection Manager software. This software is required for installation and is essential for optimum performance of your PC3220.

1. Insert the installation CD into your CD-ROM drive.
2. The Setup program should launch automatically and a Welcome window will appear.
Note:
If the Setup program does not launch automatically, select **Start>Run** and enter **d:\Setup.exe**, where **d** is the designation for the CD-ROM drive.
3. Click **Next** on the Mobile Connection Manager Setup Welcome Window.
4. Please read the Licensing Agreement carefully and click **Yes** to agree to the terms.
5. Click **Next** to install the software in the default folder. You may choose to install a different folder by clicking the **Browse** button.
6. If you prefer to have the Mobile Connection Manager launch automatically each time your notebook PC starts up, ensure the **Run Mobile Connection Manager at Start up** checkbox is checked. If you prefer to add the Mobile Connection Manager shortcut to your desktop, ensure the **Desktop Shortcut** checkbox is checked. Click **Next**.

Windows® 2000 and XP only:

Please read the "Signature Not Found" notice and click **OK** to proceed.

7. Wait for the **Setup Status** to load **100%** and the window will close automatically.

Windows® 2000 and XP only:

A "Digital Signature Not Found" window may appear. The Mobile Connection Manager is compatible with both versions of Windows®; it will not cause any operating errors. Please disregard the notice and click **Yes** or **Continue Anyway** to proceed with installation.

8. Installing the Fourelle Venturi 2.1 data compression software is recommended for accelerated performance. Click **Yes** to install the Fourelle Venturi 2.1 and proceed to step **10**.
9. Click **Finish** and proceed to step **19**.

NOTE:

If you choose to install Venturi later, select **No** and continue to step 9.
Your notebook PC will not restart.

Windows 98 only:

- a. Click **OK**. Your notebook PC will restart before installation of Fourelle Venturi 2.1 begins. Once the Installation screen appears, click **Finish**.
- b. You must restart your notebook PC before the new settings will take effect. Click **Yes** to restart your notebook PC.
- c. Once your notebook PC does reboot, you will need to manually install Venturi. Go to **Start>Run** and enter **d:\Setup.exe**, where **d** is the designation for the CD-ROM drive. Select Fourelle Venturi 2.1 and click **OK**.

Installing Fourelle Venturi 2.1 Data Compression

10. If you haven't saved and closed other active applications and critical files, do so at this time and click **OK**.
11. Wait while the Venturi Setup prepares the InstallShield™ Wizard. This window will close automatically.
12. To begin installation of the Venturi, click **Next**.
13. Read the Licensing Agreement carefully and click **Yes** to agree to the terms.
14. Review the Readme document and click **Next**.
15. Click **Next** to install the Venturi software to the default folder. If you prefer to install it to a different folder, click the **Browse** button.
16. A command box will appear briefly. No action is required when this screen appears; it will close automatically.
17. Before clicking **Finish**, close any open programs and save critical files. Your notebook PC will restart automatically.
18. Allow your computer to fully reboot before proceeding with the insertion of the PC3220 PC Card and drivers.
19. Skip to step **21** if you did not check the option **Run Mobile Connection Manager at Start up from the** Mobile Connection Manager Setup window (see step 6).
20. Skip to step **22** if you did check **Run Mobile Connection Manager at Start up** from the Mobile Connection Manager Setup window (see step 6).
21. In order to manually launch Mobile Connection Manager, double-click on the Mobile Connection Manager icon located on your desktop or access the Mobile Connection Manager from the Start menu: **Start>Programs>Mobile Connection Manager**.

22. The Mobile Wireless Connection Manager will launch at the start up of your notebook PC. Do not insert the PC3220 until you have followed the instructions for proper installation outlined in section **2: Driver Installation**.

C. Driver Installation

WARNING:

Once the card is inserted, do not physically remove the PC3220 until you have completed the Unplug/Eject process. Removing the card improperly may cause a fatal error.

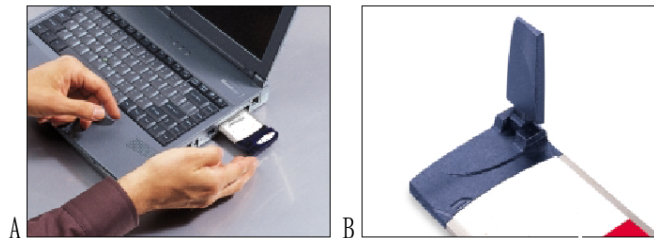
Note:

Before inserting the PC3220 into your notebook PC's PC Card slot, it is recommended that you remove the Installation CD from your CD-ROM drive.



driver: a program that extends the operating system to support a device such as a PC Card; or a program that enables an application to use a device such as a printer. Hardware devices such as PC Cards must each have the proper driver installed in order to run. 2. A driver acts like a translator between the device and programs that use the device.

1. Insert the PC3220 into your notebook PC's PC Card Slot with the label facing up. Then, raise the antenna so that it is fully extended and pointed up at a 90° angle. Use in any other configuration may exceed FCC RF Exposure Limits.



2. Once you have inserted the card properly, your Windows operating system will notify you that new hardware has been detected.

Windows XP only:

The Hardware Detection Wizard will launch upon insertion of the PC3220. Follow the on screen instructions. This three-step wizard process will perform five times.

Windows 2000 and XP only:

A "Digital Signature Not Found" window may appear. Please disregard the notice and click **Yes** or **Continue Anyway** to proceed with installation.

NOTE:

You may hear a short beep each time the PC3220 is inserted and removed from your notebook PC. This is normal. It is an audible notification from your notebook PC communicating that it recognizes new hardware.

D. Activating the PC3220**1. Auto Activation**

- a. Once the PC3220 is properly inserted into the Type II PC Card slot of your notebook PC, the Activation Wizard will automatically appear. Click **Activate**. (You will not be able to connect to the network if your PC3220 has not been activated).
- b. The Activation Progress window displays the status of the activation. Once the procedure is complete, the window will close automatically.
- c. An "Activation complete" message appears. Click **OK** to exit the Activation Wizard and wait for your notebook PC to restart automatically.

NOTE:

If you cancel the Activation Wizard before Activation is complete, an Activation Alert Notification will be displayed explaining that you must activate your card in order to connect to the Internet or other Internet dependent function, such as email.



Activation: the process of setting up an account.

2. Troubleshooting: Activation

FIG 2 [FILE NAME: CIRCLE X.BMP]



- a. If you receive an "Activation Unsuccessful" message when you attempt to activate the PC3220 through Auto Activation follow these steps to initiate Manual Activation:

3. Manual Activation

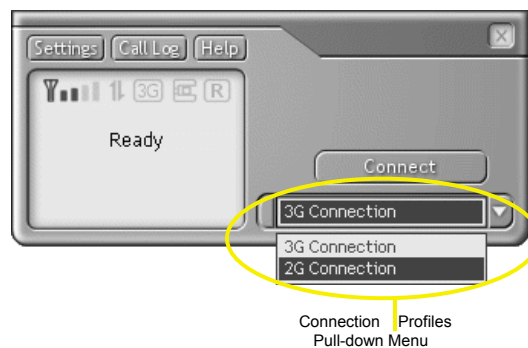
- a. Contact your Service Provider for an Activation Code, Phone Number and SID (System Identifier).
 Activation Code: _____
 Phone Number: _____
 SID: _____
- b. Select **Manual Activation** from the Activation Unsuccessful alert window.
- c. A four-step Activation Wizard appears. Follow the on-screen instructions and click **Finish** when complete.

- d. Once you have properly inserted the PC3220 into your notebook PC's Type II PC Card slot, the Mobile Connection Manager will notify that it is ready to connect to the network (See page XX).
- e. Select your network connection profile from the pull down and then click **Connect** in order to activate a session. (See XX for more information on Network Connection Profiles).



Service Provider: a company that operates and provides access to CDMA networks. In order to connect to the Internet with your PC3220, you must have an account with a CDMA service provider.

Fig 3 [File Name: UI_menu callout.bmp; OR UI_menu.bmp]



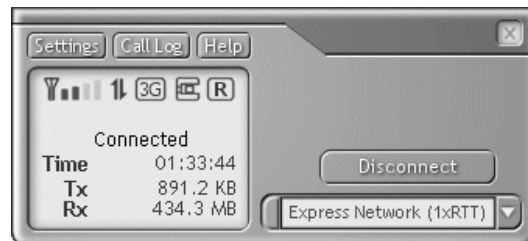
NOTE:

If you have not activated your PC3220, an Activation Alert Notification will be displayed once you click the **Connect** button explaining that you must activate your card in order to establish a session.

4. Establishing a Connection after Activation

The Mobile Connection Manager will take a few moments to connect to the network. The word *Connected* appears in the Indicator Area notifying you that a connection has been established. (The **Connect** button will change to read **Disconnect**.)

Fig 4 [File Name: UI_Connected.bmp]



5. To disconnect from the network and end your current connection, click **Disconnect**.

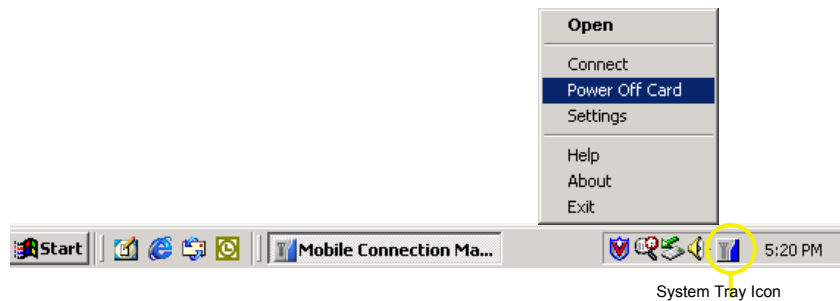
NOTE:

"No Service" message is displayed when the PC3220 cannot locate the network. "Connected" message is displayed once a connection is established.

6. The dialog box will return to the "Ready state" to notify you that your session is no longer active.
7. To "power-off" the Mobile Connection Manager, click on the icon found in your system tray.

Fig 5.

[File Name: ST_shortcut menu_power.bmp; OR systemtray.bmp; OR powermenu.bmp]



WARNING:

Do not eject the PC3220 from your notebook until you have followed the instructions for proper removal. Removing the card improperly may cause a fatal error.

E. Removing the PC3220 from your Notebook PC


1. Click on the "Mobile Connection Manager" icon  found in the system tray.
Fig 6 [File Name: MCM_icon.bmp]
2. Select **Exit** from the menu. (The icon will disappear from the system tray).
3. After the Mobile Connection Manager has exited, go to the system tray and click on the "Unplug and Eject Hardware" icon.

Fig 7 [File Name: WIN98 Eject.bmp; WINXP Eject.bmp; WIN2KME Eject.bmp]



Windows 2000 & ME

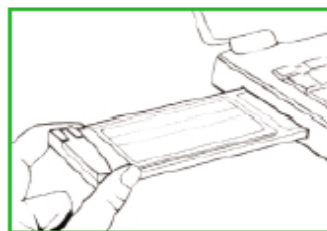


Windows XP



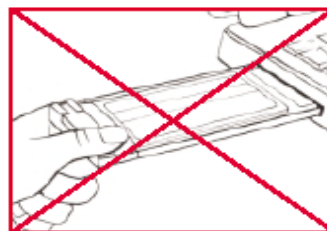
Windows 98SE

4. Select "AirPrime USB Open Host Controller" from the Unplug/Eject Hardware window. Next, click **Stop** and then **Close**.
5. A Stop Hardware Device window pops up, asking to confirm which device to stop. Select "AirPrime USB Open Host Controller" and click **OK**.
6. After the "Safe to Remove Hardware" message appears, click **OK**.
7. You may now remove the PC3220 from your notebook. When removing the PC3220, always grip it by the sides of the card rather than from the top. Pulling on the antenna over time may damage the card. If available, use the Card Ejector tool on your laptop.



Correct

When inserting or removing your PCS Connection Card, grip the card by both of its sides.



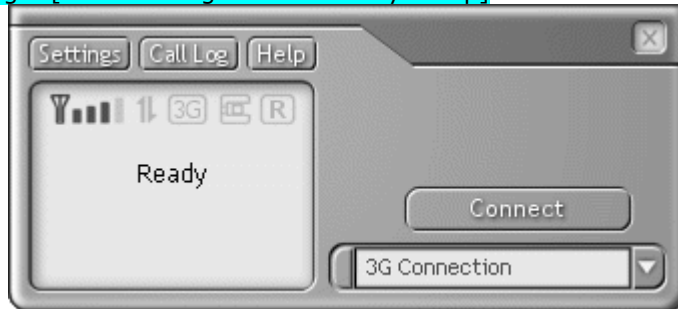
Incorrect

Do not handle or remove the PCS Connection Card by pulling on the antenna.

F. Establishing a Connection

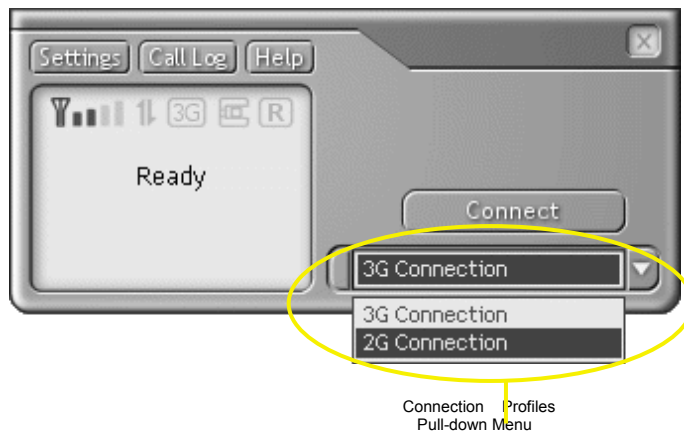
1. Once you have properly inserted the PC3220 into your notebook PC's Type II PC Card slot (See **Installing the Drivers to your Notebook PC**), the Mobile Connection Manager will notify that it is ready to connect to the network.

Fig 8 [File Name: genericUI-Ready1.bmp]



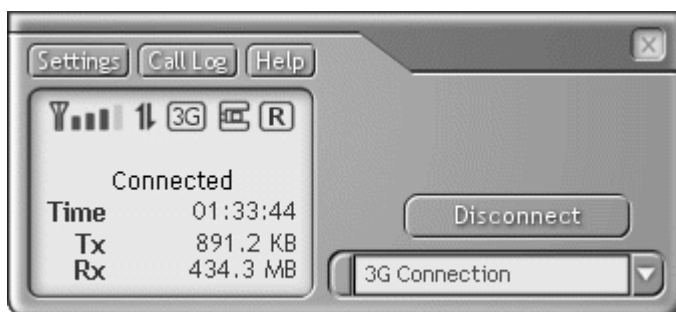
2. Select your network connection preference from the pull down menu and then click **Connect** in order to establish a connection.

Fig 9: [File Name: genericUI_ComboBoxOPen1.bmp]



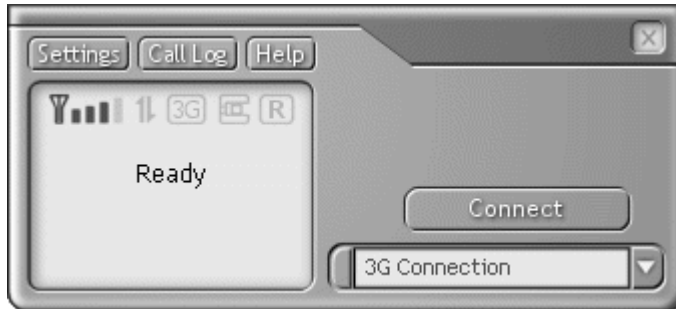
3. The Mobile Connection Manager will take a few moments to connect to the network. The dialog box at the bottom of the Mobile Connection Manager window will display the word **Connected** to notify that you have established a connection. The **Connect** button will change to read **Disconnect**. To end the connection, click **Disconnect**.

Fig 10 [File Name: UI_connected.bmp]



4. To end the connection, click **Disconnect**.
5. Once you have ended your connection, the dialog box will return to the "Ready" state.

Fig 11 [File Name: genericUI-Ready1.bmp]



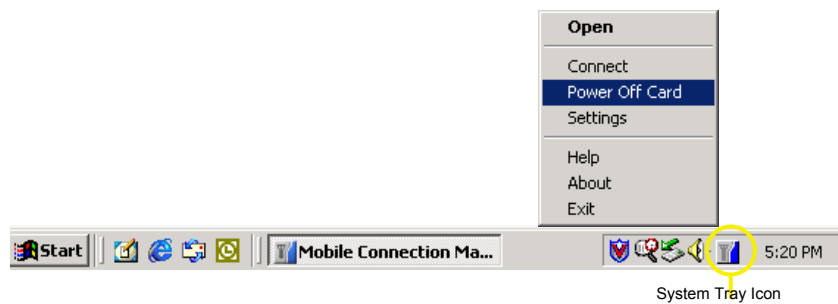
Note:

"No Service" message is displayed when the PC3220 cannot locate the network. "Connected" message is displayed once a connection is established.

6. In order to Power Off the Mobile Connection Manager click on the System Tray Icon and the System Tray Menu will appear. Select **Power Off Card**. In order to Power on the Mobile Connection Manager, click **Power On Card**.

Fig 12

[File Name: ST_shortcut menu_power.bmp; OR systemtray.bmp; OR powermenu.bmp]



WARNING:

Do not eject the PC3220 from your notebook until you have followed the [Unplug/Eject Hardware](#) instructions for proper removal. Removing the card improperly may cause a fatal error to your PC.

G. Exiting the Mobile Connection Manager (MCM)

1. When you have completed your current session, click **Disconnect** on the Mobile Connection Manager to ensure that you are disconnected from the network; this will make the data connection inactive.
2. Next, click on the Mobile Connection Manager icon located in the system tray of your notebook PC and select **Exit** from the shortcut menu. This will close the Mobile Connection Manager and the icon will disappear from the system tray.

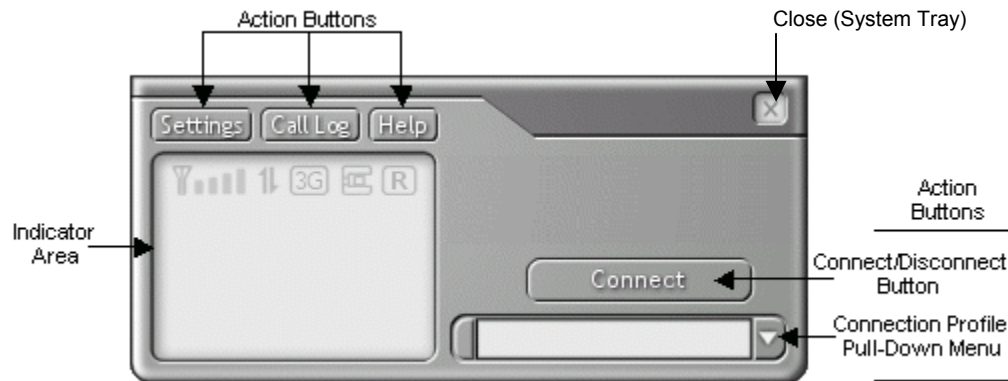
III. Using the Mobile Connection Manager My Mobile Connection Manager

The Mobile Connection Manager is turned on automatically when your laptop starts up, unless you turned this option "off" in the previous section, Software Installation.

This view of the Mobile Connection is called **Full Mode**. An alternate view, called the **System Tray Mode**, is described later in this section, titled: **System Tray Mode (Connection Status Icon and Menu)**.

Fig 13 [File Name: generic_Indicator_Area_Callout1.bmp]

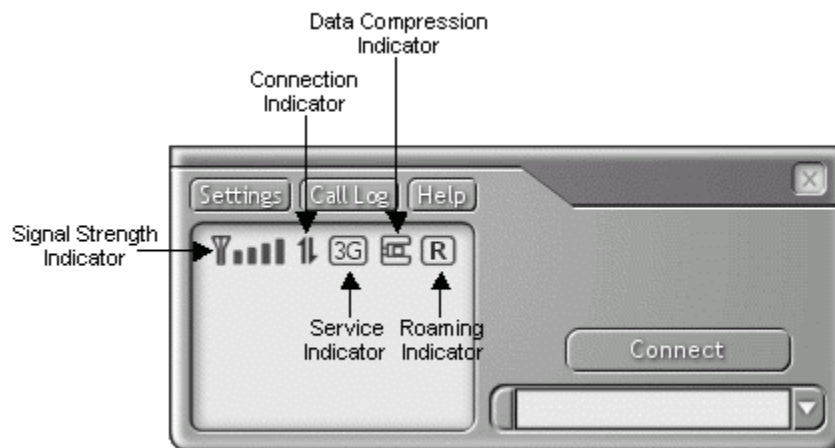
Full Mode:



A. Understanding The Indicator Area and Icons

Depending on the PC3220's operating mode, different indicators will be displayed.

Fig 14 [File Name: generic_Indicator_Area_Callout2.bmp]



1. Signal Strength Indicator



Fig 15 [File Name: Icon_Signal Strength.bmp]

The Signal Strength icon displays when the Mobile Connection Manager is turned on. The bars indicate the strength of the radio signal. Four bars signify that the signal strength is at its maximum peak. The strength will change depending on where you are.



Fig 16 [File Name: Icon_Signal Strength red.bmp]

This displays when no signal is available or when the Mobile Connection Manager is turned off. The antenna symbol is red and the bars are dimmed. When this occurs, no connection is possible for one of the following reasons:

- You are outside of a CDMA network coverage area
- The signal strength is too weak
- A network problem is preventing the PC3220 from obtaining service
- The Mobile Connection Manager is not turned on or the PC3220 has not been inserted
- The antenna is not raised to a 90° angle

2. Service Indicator

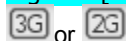
Fig 17: [File Name: Icon_Service Indicator.bmp]

Fig 18: [File Name: Icon_2G.bmp]

Fig 19: [File Name: Icon_Service Indicator.bmp]

Fig 20: [File Name: Icon_2G.bmp]

Fig 21: [File Name: Icon_3Gdimmed.bmp]



The Service Indicator icon displays which network service is currently available at your location, the 3G Network or the 2G Network.



3G Connection

This default icon signifies that the 3G network is available (even if 2G is also available)



2G Connection

This icon signifies that only the 2G network is available



No service

The icon is dimmed when no service is available

Note:

The 3G icon will appear even if the 2G network is also available. You are able to make data calls on the 3G network, if your billing plan allows for it. (Depending on your billing plan, there may be an additional charge for data calls on the 3G network. Contact your service provider for more information on accessing 3G.)



data call: similar to making a voice call, a data call is the term used when you access the Internet. Data calls go dormant when the Internet activity is inactive for ~30 seconds. When a data call goes dormant, you are not being charged for airtime.

3. Data Compression

Fig 22: [File Name: Icon_Compression Indicator.bmp]

Fig 23: [File Name: Icon_Compress_gray.bmp]



The Data Compression icon appears when the Fourelle Venturi 2.1 data compression tool is active.



When the Data Compression icon is dimmed, the Fourelle Venturi 2.1 application is inactive.

4. Roaming Status

Fig 23: [File Name: generic_icon roam1.bmp]

Fig 24: [File Name: generic_icon roam1.bmp]

Fig 25: [File Name: generic_Icon roam0.bmp]



The Roaming Status icon indicates the roaming status of your PC3220. When you are roaming, you are using the network of another service provider that offers coverage outside of your local coverage area. This typically happens when you are out of your coverage area.



When the indicator is "on" (solid black) you are roaming within a "preferred" roaming area. When the icon is blinking, you are roaming within a CDMA network, but not in a "preferred" zone.



When the indicator is "off" (dimmed), you are within the local coverage area of your service provider. You are not roaming.

Note:

Your coverage area and billing charges depend upon your service provider and the type of account you have. There may be surcharges for roaming service that varies based on whether you are in a preferred roaming area or a non-preferred roaming area. If there is no roaming agreement between your service provider and the local carrier, you may be unable to complete calls in a non-preferred zone.

5. Connection Indicator

Fig 26: [File name: Icon_Compression Indicator.bmp]

Fig 27: [File name: Icon_Connection Indicator dimmed.bmp]



The Connection Indicator icon signifies that a connection is established. The icon will flash while you are in the process of connecting and will then remain static once you are connected.



If the Connection Indicator icon is dimmed, there is no connection nor is a connection attempt in process.

6. Connection Time

The Connection Time field displays the duration of the current data call or connection. The timer begins as soon as a connection is established. The time format is 00hrs: 00min: 00sec.

7. Byte Counter

The Byte Counter displays the amount of data transferred and received during as soon as a connection is established in measurements of Kilobytes and Megabytes.

For 0 to 999KB: "XXX KB" format (I.e., "7 KB," "68 KB," or "768 KB")

For 1MB and up: "XXX.X MB" format (I.e., "1.0 MB," "3.2 MB" or "343.3 MB")

8. Service Status Dialog Box

The Service Status Dialog Box explains the current status of your PC3220.

Fig 28: [File Name: Icon_Service Indicator.bmp]






Fig 29: [File Name: Icon_2G.bmp]

Fig 30: [File Name: Icon_3G dimmed.bmp]

Fig 31: [File Name: Icon_Connection Indicator.bmp]

Fig 32: [File Name: Icon_Connection Indicator dimmed.bmp]

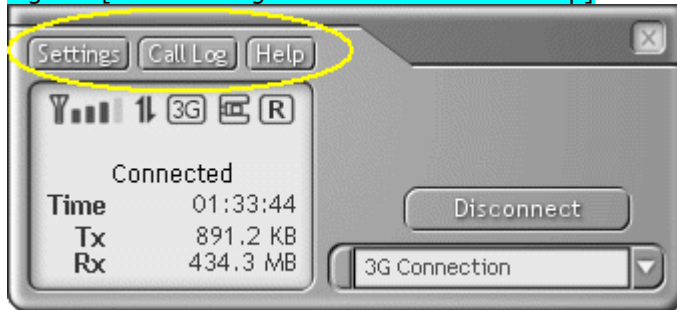
Fig 33: [File Name: Icon_Connection Indicator.bmp]

Service Status Dialog	Description	Associated icon graphic
<i>Please insert Card</i>	No card is detected	The system tray icon displays gray
<i>Card is Off</i>	PC Card is powered off	The system tray icon displays gray
<i>Ready</i>	Service is available	 or  appear in the Indicator area and the system tray icon displays green
<i>No Service</i>	No service is available	 This icon will be gray
<i>Connecting</i>	Attempting to make a connection	 This icon will flash
<i>Connected</i>	A connection is established (2G, 3G active or dormant)	
<i>Dormant/Connected</i>	A connection is established but no data transfer is in progress	The system tray icon displays yellow
<i>Disconnecting</i>	Disconnecting the current call	None
<i>Call Dropped</i>	Call is dropped; transient state returning to Ready	None

B. Understanding the Action Buttons

The Action Buttons allow you to customize the Mobile Connection Manager and monitor your connections.

Fig 34: [File Name: genericUI-action circle.bmp]



1. Settings

The Settings tool allows you to customize the Mobile Connection Manager. Once you click on this button a pop-up window with three tabs will appear:

- General
- Connection Profiles
- About

1.1 Settings: General Tab

Option	Choices	Description
<i>Enable Compression</i>	<ul style="list-style-type: none">- On- Off (default)	This option is turned "off" by default. If you prefer to set the Fourelle Venturi 2.1 data compression to remain "on" place a checkmark in the checkbox.
<i>Start in System Tray Mode</i>	<ul style="list-style-type: none">- In Full Mode (default)- In System Tray Mode	None of these options allow automatic placement of a data call upon card insertion.
<i>Run Mobile Connection Manager at Start up</i>	<ul style="list-style-type: none">- On (default)- Off	This default setting can be changed during installation. Refer to Installing the Mobile Connection Manager , step 5.
<i>Enable Call Drop Alert</i>	<ul style="list-style-type: none">- On (default)- Off	This option is checked by default. It enables a pop-up window and audible alert when the connection is dropped. Applicable to 2G and Dial-up Networking only.
<i>Premium Service Alert</i>	<ul style="list-style-type: none">- On (default)- Off	This option is checked by default and it enables a pop-up window before making a connection to the 3G network.

1.2: Settings: Connection Profiles Tab



connection profile: a predefined or user-created profile that signifies a type of connection. (i.e. 3G, 2G, or other).

The Connection Profiles tab provides a summary of your connection profiles. The default connection profiles for 3G and 2G are created during installation and can neither be deleted or edited. You have the option to add a new connection profile or edit an existing profile that you have created.

These three headers are displayed in the window:

- Profile Name
- Profile Number
- Default profile (shows a checkbox for the default profile)

Connection Profiles Buttons

Button	Function/Action
<i>Add</i>	Opens the Connection Profile Edit Window if you wish to add a new dial up connection profile.
<i>Delete</i>	If you prefer to delete one of the dial-up connection profiles, select the profile and click Delete . If no profile is selected, the button will be dimmed. An Alert will appear to confirm your choice about deleting a certain Connection Profile. (You cannot delete the default connection profiles for 3G and 2G).
<i>Edit</i>	If you prefer to edit a particular dial-up connection profile, highlight your selection and click Edit . The Connection Profile Edit Window will open. If no profile is selected or either 3G or 2G is selected, the edit option will be unavailable.
<i>Connect</i>	Allows you to make a connection using the selected profile. If no profile is selected, the option will be unavailable.
<i>Set as default</i>	Mark the currently selected connection profile as the default. If no profile is selected, the option is unavailable.

Connection Profile Edit Window

This window allows you to add a new connection profile or edit an existing profile.

Field	Format/Values	Description
Profile name	20 alphanumeric characters or punctuation marks	Enter the name of the profile that will be displayed in the Connection Profile Window. Minimum length is 1 character.
Phone number	3 or more digits, #, *	Enter the destination phone number of the profile. This field is mandatory.
User name	40 characters	Enter the username to be submitted to the receiving modem. This field is optional.
Password	20 characters	Enter the password to be submitted to the receiving modem. An asterisk (*) will represent every entered character. This field is optional.

1.3: Settings: About Tab

The About Tab provides useful information about the your device.

2. Call Log

The Call Log lists a summary of all data calls made. A Window table appears displaying the following columns:

Column Name On-Screen	Format	Description
<i>Call Type</i>	3G 2G <i>Dial-up Networking</i>	Indicates the type of call initiated. Click on the Column name to sort by Call Type.
<i>Connection Name</i>	<i>Text</i>	From Connection Profiles list (3G or 2G)
<i>Phone number</i>	<i>15 digits</i>	Destination phone number or Caller ID, if available. For 2G calls, this will be the number dialed.
<i>Date and Time</i>	YYYY MMM DD <i>hh:mm am(or pm)</i>	Date when the data call was made. (MMM is the 3-character representation of the month). Time when the call is initiated. Click on the Column name to sort by Date and Time.
<i>Duration</i>	<i>hh:mm:ss or mm:ss</i>	Duration of the call.
<i>Bytes In</i>	Examples: 7 KB, 68 KB, 768 KB, 3.2 MB, 343.3 MB, 1.3GB.	
<i>Bytes Out</i>	Examples: 7 KB, 68 KB, 768 KB, 3.2 MB, 343.3 MB, 1.3GB.	

Note:

You are able to sort/organize the view (ascending and descending) by any of the above six columns.

Button	Action
<i>Reset</i>	If there are some entries in the call log, a confirmation dialog will appear. If confirmed, purge all entries in the Call Log and reset the Last Reset Time to the current time. If there is no entry in the Call Log, no action is taken.

3. Help

The Help button links you directly to the online help guide.

4. System Tray Shortcut

Fig. [File Name: UI CloseX.bmp]



When viewing the Mobile Connection Manager in Full Mode, you have the option to “close” the window into System Tray Mode. The icon located in the System Tray communicates your connection status similarly to the Service Status dialog in Full Mode. By clicking on this shortcut, you are activating the System Tray Mode.

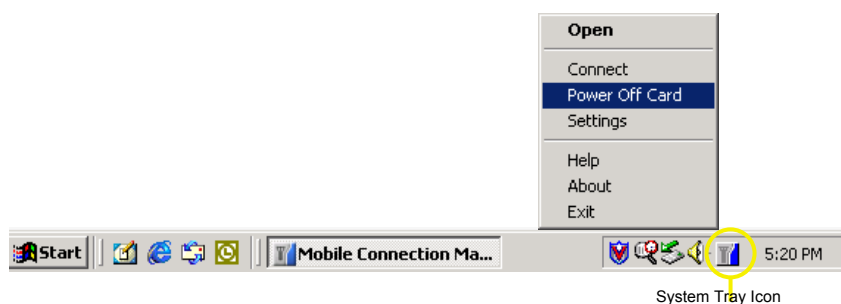
IV. System Tray Mode (Connection Status Icon and Menu)



system tray: also known as the “status area,” the system tray is the section to the right of the Start button on your desktop.

If you prefer to close the Full Mode view of the Mobile Connection Manager, you can still monitor your connections with the System Tray icon.

This section outlines the functions of the System Tray icon and the System Tray shortcut menu.



A. System Tray Icon

Once the Mobile Connection is launched, an icon will appear in the System Tray of your notebook PC. This icon will change colors, according to the current status of your connection. Once you exit the Mobile Connection Manager, this icon will disappear.

"System Tray Icon" Description	
Icon Color	Tool Tip
Ready- When the icon displays blue , it is ready to make a connection	Mobile Connection Manager: Ready
Connecting- currently making a connection icon is flashing	Mobile Connection Manager: Connecting
Connected- When the icon displays green , a connection is established and data transfer is in progress	Mobile Connection Manager: Connected
Dormant/Connected- When the icon displays yellow , a connection is established but no data transfer is in progress	Mobile Connection Manager: Dormant/Connected
No Service- When the icon displays red , the card has no service	Mobile Connection Manager: No Service

Off- When the icon appears gray this means that the power to the card is off	<i>Mobile Connection Manager: Card is Off</i>
No card is detected	<i>Mobile Connection Manager: Insert Card</i>

B. System Tray Menu

By clicking on the System Tray icon, a menu becomes visible. Below is a list explaining the functions of each menu option.

Menu Item	Action	Availability when Card is <u>not</u> inserted
<i>Open</i>	Brings up Full Mode view	Remains available
<i>Connect (or) Disconnect</i>	Select to connect or disconnect a data call	Option is unavailable when icon is dimmed
<i>Power On Card (or) Power Off Card</i>	Select to power on/off the card	Option is unavailable when icon is dimmed
<i>Settings</i>	Open Settings dialog	Option is unavailable when icon is dimmed
<i>Help</i>	Brings up the Help file	Remains available
<i>About</i>	Brings up the About Tab in the User Settings window	Option is dimmed/unavailable
<i>Exit</i>	Terminates Mobile Connection Manager; The System Tray icon will disappear	Remains available

Note:

When you select **Exit** from the menu, you are “exiting” the application/program. Once this action occurs, the icon will be removed from your system tray. (Remember the icon is only visible while the program is running).

V. Understanding Alert Windows

Alerts that are generated by the Mobile Connection Manager explain effects of certain actions you are enabling by selecting particular functions. You generally can exit an alert by selecting **Yes**, **No** or **OK**. You also have the option to “turn off” an alert either from the alert window

itself, or by manually shutting it off. To manually shut off an alert, access the **Settings** tool in the **Action Area** of the Full Mode Mobile Connection Manager screen or click the **System Tray Icon** in the system tray of your notebook PC to access the shortcut menu. Following are different alerts that may appear during use.

A. Premium Service Alert

This alert appears each time an 3G network call is initiated. Select **Yes** to dismiss the alert and proceed with your data call or **No** to cancel the data call. You are able to turn off this alert for the future by clicking the checkbox at the bottom of the window. You may manually turn off this alert by accessing the **General** tab in the **Settings** tool window.

B. Call Dropped Alert

A visual and audible alert occurs whenever a connection has been inadvertently lost, due to poor signal strength or being outside a local coverage area. Select **OK** to acknowledge the notice and close the window. You may manually turn off this alert by accessing the **General** tab in the **Settings** tool window.

C. Software Mismatch Alert

This alert will appear if the host software you are installing is older than modem software. Click **OK** to dismiss the dialog.

NOTE:

You may continue to use the PC3220 after closing the alert window, even with the Software mismatch.

D. Power On Card Alert

If the PC3220 has been "Powered Off", an attempt to connect by clicking the **Connect** or **Settings** buttons will cause this alert to appear. Click **Yes** to close the alert window and card power on the PC3220 automatically. Click **No** to acknowledge that the card has been "Powered Off" and close the alert window.

NOTE:

You must turn the power on before making a connection. Access the shortcut menu by clicking on the System Tray icon and select **Power On**.

E. Connection in Progress Alert

A "Connection in Progress" or "Connection is still Active" alert message occurs if you attempt to select "Exit" or "Power Off" from the System Tray shortcut menu prior to terminating your connection.

When a connection is in progress, you cannot exit or power off the PC3220 without first terminating the connection by clicking the **Disconnect** button from the Full Mode view or shortcut menu from the System Tray icon.

When this alert message appears, click **Yes** and your connection will be automatically terminated. Continue with your intended action.

Click **No** to dismiss the alert message and keep the Mobile Connection Manager power on and connection active.

F. Delete Connection Profile Confirmation

If you decide to delete a dial-up connection from your Connection Profiles, a confirmation message will appear. Select **Yes** to delete the selected profile and return to the **Connection**

Profile Tab. Select **No** to close the confirmation window and cancel or ignore the intended action.

NOTE:

Preset default profiles cannot be deleted.

G. Reset Call Log Confirmation

When you reset the Call Log a confirmation message will appear. Select **Yes** to confirm the deletion of the current entries and to reset the Last Reset Time. Select **No** to close the confirmation window and retain all current entries in the call log without resetting the Last Reset Time.

VI. Networking and Dial-up Connections

Windows Networking

After installation of the Mobile Connection Manager and drivers, the two default connection profiles (3G Network Connection and 2G Network Connection) will appear automatically on the Windows® "Network and Dial Up Connections" window. If you have added a new connection profile, it will also be displayed in this window.

In order to create new connection profile, you will need to consult the Microsoft Help files.

VII. Frequently Asked Questions

Here are some answers to common questions regarding the PC3220:

What is the Mobile Connection Manager?

The Mobile Connection Manager is an application designed to assist you in managing the PC3220. With this application you can easily monitor and customize your connections.

My PC3220 becomes noticeably hot after using it for a while, is this normal?

Like all PC Cards, the PC3220 generates heat in its normal operation and is also heated by the host computer. For this reason it is recommended that you allow PC3220 to cool down after extensive operation so that it may become cool to the touch before you remove it from your notebook PC.

What is the difference between 3G and 2G?

3G is a digital network using 1XRTT technology with speeds bursting up to 144Kbps. 2G network functions somewhat like a standard 14.4k dial-up connection, with the exception that the time required to establish a connection/session is much shorter.

How fast will my connection be with the PC3220?

If your card is functioning in a 3G zone, the maximum speed you will experience is 144kbps, with average speeds between 50-70kbps. If you are attempting to connect in a 2G coverage area, speeds will match that of a standard dial up connection.

With the installation of the Fourelle Venturi data compression software, you will achieve accelerated performance.

Which Operating System do I need in order to run the Mobile Connection Manager?

You will need Windows 98SE, 2000, ME, or XP to run the Mobile Connection Manager. The Mobile Connection Manager is not compatible with Windows CE, handhelds or Macintosh.

How much space on my hard drive will the Mobile Connection Manager require?

50MB. For complete system requirements, see: Installing the Mobile Connection Manager and the PC3220 on my Notebook PC on page XX.

What is the Fourelle Venturi 2.1 Data Compression Software?

Fourelle Venturi 2.1 Data Compression Software is an enhancing feature available with the PC3220. When you install and enable the Venturi software, located on your installation CD, the compression will automatically be used where it is available on the network. In areas where the Venturi server is implemented, you will notice an increase in the speed of your data connections.

Am I able to make phone/voice calls with the PC3220?

No, this particular model is designed for data calls only.

VIII. Regulatory Information and Safety

This Section outlines important regulatory notices concerning your new PC Card.



A. Regulatory Notices

This device complies with Parts 15, 22, and 24 of the FCC rules. This PC card has been tested with the typical laptop computer with the side loading PCMCIA bay. This PC card must not be co-location or operated in conjunction with any other antenna or transmitter. Use of this device in any other configuration may exceed the FCC RF Exposure compliance limit. Operation of this device is subject to the following two conditions:

1. This device may cause harmful interference, and
2. This device must accept any interference received, including interference that may cause undesirable operations.

FCC guidelines stipulate that the antenna should be more than 1.5 cm (0.60") from bystanders and 1.0cm (0.39") from the user. When in use, the antenna should be fully extended upward at a 90-degree angle.

FCC ID: PNF-PC3220P

Caution: Unauthorized modification or changed not expressly approved could void compliance with RF exposure guidelines.

Warning- This equipment has been tested and found to comply with the limits pursuant to Part 15, 22, and 24 of the FCC Rules. These limits are designed to provide reasonable protection against harmful interference in an appropriate installation. This equipment generates, uses, and can radiate radio frequency energy and, if not installed and used in accordance with the instruction, may cause harmful interference to radio communication. However, there is no guarantee that interference will not occur in a particular installation.

If this equipment does cause harmful interference to radio or television reception, which can be determined by turning the equipment off and on, the user is encouraged to try to correct the interference by one or more of the following measures:

- Reorient or relocate the receiving antenna
- Increase the separation between the equipment and receiver
- Connect the equipment into an outlet on a circuit different from that to which the receiver is connected
- Consult the dealer or an experienced radio/TV technician for help

WARNING- This digital apparatus does not exceed the Class B limits for radio noise emissions from digital apparatus as set out in the interference causing equipment standard entitled "Digital Apparatus," ICES-003 of the Department of Communications.

Cet appareil numérique respecte les limites de bruits radioélectriques applicables aux appareils numériques de Classe B prescrites dans la norme sur le matériel brouilleur. "Appareils Numériques," NMB-003 édictée par le ministre de Communications.

If you have purchased this product under a United States Government contract, it shall be subject to restrictions as forth in subparagraph (C)(1)(ii) of Defense Federal Acquisitions Regulations (DFARs) Section 252.227-7013 for Department of Defense contracts, and as set forth in Federal Acquisitions Regulations (FARs) Section 52.227-19 for civilian agency contracts or any successor regulations. If further government regulations apply, it is your responsibility to ensure compliance with such regulations.

B. Safety Information

This section outlines important liability and safety guidelines concerning your new PC Card.

1. Important Notice

Because of the nature of wireless communications, transmission and reception of data can never be guaranteed. Data may be delayed, corrupted (i.e., have errors) or totally be lost. Although significant delays or losses of data are rare when wireless devices such as the PC Card-Model PC3220 CDMA modem are used in a normal manner with a well constructed network, they should not be used in situations where failure to transmit or receive data could result in damage of any kind to the user or another party, including but not limited to personal injury, death or loss of personal property. No responsibility for damages of any kind resulting from delays or errors in data transmitted or received using the PC Card-Model PC3220 CDMA modem, or for failure of the PC Card-Model PC3220 to transmit or receive such data.

2. Safety and Hazards

[File Names: explosive.jpg; hospital.jpg; plane.jpg; car.jpg]



Blasting Areas and Hospitals

Do not operate the PC Card-Model PC3220 in areas where blasting is in progress, where explosive atmospheres may be present, near medical equipment, life support equipment, or any equipment which may be susceptible to any form of radio interference. In such areas the PC Card-Model PC3220 **MUST BE POWERED OFF**. It can transmit signals that could interfere with this equipment.



Aircraft

Do not operate the PC Card- Model PC3220 in any aircraft whether the aircraft is on the ground or in flight. In aircraft, the PC Card- Model PC3220 **MUST BE POWERED OFF**. When operating it can transmit signals that could interfere with various onboard systems.



Driving

The driver or operator of any vehicle should not operate the PC Card- Model PC3220 while in control of a vehicle. Doing so will detract from the driver or operator's control and operation of that vehicle. In some jurisdictions, operating such communications devices while in control of a vehicle is an offense.

IX. Technical Specifications

A. Environmental Specifications

Operating temperature:	- 20° to 60° C
Storage temperature:	- 30° to 65°C
Humidity:	60° @ 15 - 95 % RH
Vibration stability:	Sinusoidal vibration @ 15g peak Mechanical shock @ 50g peak
Drop:	1 meter on vinyl surface
Contact discharge (Level 2):	+/- 1.5k V
Air discharge (Level 3):	+/- 15k V

B. Radio Frequency & Electrical Specifications

Approvals:	FCC (parts 15&24, SAR)
Interface type:	Type II PC Card
Supply voltage:	3.3V
Current consumption:	Sleep/Idle: 95mA Average in-use: 360mA Max. (Peak): 950mA
Transmitter power:	200mW (+23dBm)
Transmitting:	Forward link: 144 kbps
(Max data rate):	Reverse link: 144 kbps
Transmit:	1850 to 1910MHz and 824 to 849MHz
Receive:	1930 to 1990MHz and 868 to 894MHz
Channel spacing:	1.25MHz
Frequency stability:	+/- 150Hz
Voice capability:	None

C. Software Specifications

CDMA specification:	IS - 2000 Release 0
Data service:	IS - 707A
SMS (IS-637):	No Support
FAX:	No Support
IOTA:	No Support
OTASP (IS-683A):	No Support
OTAPA (IS-683A):	No Support
PRL (preferred roaming list):	Support
Authentication:	Support
Voice:	No Support
NAM:	Single
E911 & Position Location:	No Support
TTY/Accessibility:	No Support
Mobile IP:	No Support
WNP(wireless number portability):	No Support

D. Mechanical Specifications

Dimensions (W x L x H):	54mm X 117mm X 5mm
Weight:	40g
Power button:	No support
Headset jack:	No support
LED:	Red/Green
Antenna:	Vertically polarized dipole

IX. Licensing Information

A. Licensing Information

AIRPRIME INCORPORATED

MOBILE CONNECTION MANAGER FOR THE PC3220 LICENSE AGREEMENT

ATTENTION: CAREFULLY READ THIS AGREEMENT. BY CLICKING ON THE "YES" BUTTON OF THE LICENSING AGREEMENT WINDOW OR BY INSTALLING THIS APPLICATION, YOU INDICATE THAT YOU HAVE READ THIS AGREEMENT, HAVE THE AUTHORITY TO ENTER INTO THIS AGREEMENT, UNDERSTAND AND ACCEPT ALL THE TERMS AND CONDITIONS AND THAT YOU INTEND TO BE LEGALLY BOUND BY THE TERMS AND CONDITIONS OF THIS AGREEMENT. IF YOU DO NOT AGREE WITH THE TERMS AND CONDITIONS OF THIS AGREEMENT OR IF YOU DO NOT HAVE THE AUTHORITY TO ENTER INTO THIS AGREEMENT, CLICK ON THE "NO" BUTTON AND ERASE THE SOFTWARE FROM YOUR DATA STORAGE MEDIUM.

1. LICENSE TO USE. AirPrime, Inc. ("AirPrime") hereby grants to you a non-exclusive, non-transferable license to use Mobile Connection Manager for the PC3220, which includes installation tools, documentation and other materials related to such software, subject to the terms and conditions of this Agreement.
2. PERMITTED USES. You may use Mobile Connection Manager solely for the purpose of running the PC3220 PC Card.
3. RESTRICTIONS ON USE. You may NOT: (a) use Mobile Connection Manager or make copies of it or any part of it, other than as expressly permitted in this Agreement; (b) publish or distribute all or substantially all of Mobile Connection Manager; (c) translate, reverse engineer, decompile or disassemble Mobile Connection Manager to create a derivative application; (d) sell, assign, transfer, rent, lease, sublicense or distribute rights to Mobile Connection Manager, in whole or in part; or (e) remove any proprietary notices or labels from Mobile Connection Manager. The restrictions in this section shall survive the termination or expiry of this Agreement.
4. CONFIDENTIALITY. Mobile Connection Manager and any information contained within, related to or about Mobile Connection Manager, are confidential and proprietary to AirPrime and its affiliates and suppliers. You agree not to disclose Mobile Connection Manager or such information to any third party without AirPrime's prior written consent. This section shall survive the termination or expiry of this Agreement.
5. OWNERSHIP. United States and international copyright and intellectual property laws protect Mobile Connection Manager. AirPrime or its affiliates and suppliers own all rights to Mobile Connection Manager. AirPrime and its affiliates retain all rights in and to Mobile Connection Manager including, without limitation, the source code, object code, and any related information. By acquiring this application, you do not become the owner of Mobile Connection Manager but are entitled only to use Mobile Connection Manager in accordance with the terms of this Agreement. Nothing in this Agreement shall be construed as granting to you any other license, or invention, trade secret, patent, copyright, trademark or other intellectual property right of AirPrime. This section shall survive the termination or expiry of this Agreement.
6. NO WARRANTY. MOBILE CONNECTION MANAGER IS PROVIDED AND LICENSED "AS IS" AND USE OF MOBILE CONNECTION MANAGER IS AT YOUR RISK. AIRPRIME EXPRESSLY DISCLAIMS ALL WARRANTIES, REPRESENTATIONS OR CONDITIONS OF ANY KIND, EXPRESS, IMPLIED OR STATUTORY, INCLUDING BUT NOT LIMITED TO, BOTH (A) ANY WARRANTY OF MERCHANTABLE QUALITY OR FITNESS FOR A PARTICULAR PURPOSE, AND (B) ANY WARRANTY THAT MOBILE CONNECTION MANAGER IS DELIVERED FREE OF ANY THIRD PARTY CLAIMS BY WAY OF INFRINGEMENT OR OTHERWISE. AIRPRIME DOES NOT WARRANT NOR MAKE ANY CONDITION OR REPRESENTATIONS THAT THE FUNCTIONS CONTAINED IN MOBILE CONNECTION MANAGER WILL MEET THE REQUIREMENTS OF THE LICENSEE, THAT THE OPERATION OF MOBILE CONNECTION MANAGER WILL BE UNINTERRUPTED OR ERROR-FREE OR VIRUS FREE OR THAT DEFECTS IN MOBILE CONNECTION MANAGER WILL BE CORRECTED. FURTHER, AIRPRIME DOES NOT WARRANT OR MAKE ANY CONDITIONS OR REPRESENTATIONS REGARDING THE USE OR THE RESULTS OF THE USE OF MOBILE CONNECTION MANAGER IN TERMS OF ITS CORRECTNESS, ACCURACY, RELIABILITY OR OTHERWISE. NO ORAL OR WRITTEN INFORMATION OR ADVICE GIVEN BY AIRPRIME OR OTHERS SHALL CREATE A WARRANTY, CONDITION OR REPRESENTATION OR IN ANY WAY EXTEND THE SCOPE OF THE "AS IS" PROVISION OF MOBILE CONNECTION MANAGER. This section shall survive the termination or expiry of this Agreement.

You acknowledge and agree that you have no rights to any upgrades, modifications, enhancements or revisions that AirPrime may make to Mobile Connection Manager. AirPrime has no obligation to provide any support of any sort.

7. NO LIABILITY. THE ENTIRE RISK AS TO THE RESULTS AND PERFORMANCE OF THIS APPLICATION IS ASSUMED BY YOU. NEITHER WE NOR OUR AFFILIATES, DISTRIBUTORS, RESELLERS, SUPPLIERS, AGENTS, OFFICERS AND DIRECTORS SHALL HAVE ANY LIABILITY TO YOU OR TO ANY OTHER PERSON OR ENTITY FOR ANY DAMAGES HOWSOEVER CAUSED INCLUDING, BUT NOT LIMITED TO, DIRECT, INDIRECT, INCIDENTAL, SPECIAL, GENERAL, CONSEQUENTIAL, PUNITIVE OR EXEMPLARY DAMAGES WHATSOEVER INCLUDING, BUT NOT LIMITED TO, LOSS OF REVENUE OR PROFIT, DAMAGES TO PROPERTY OR PERSONS, LOST OR DAMAGED DATA, OR OTHER COMMERCIAL OR ECONOMIC LOSS, EVEN IF WE HAVE BEEN ADVISED OF THE POSSIBILITY OF SUCH DAMAGES OR THEY ARE FORESEEABLE, OR FOR CLAIMS BY ANY THIRD PARTY. OUR MAXIMUM AGGREGATE LIABILITY AND THAT OF OUR AFFILIATES, DISTRIBUTORS, RESELLERS, SUPPLIERS, AGENTS, OFFICERS AND DIRECTORS TO YOU SHALL NOT EXCEED THE AMOUNT PAID BY YOU FOR MOBILE CONNECTION MANAGER. THIS SECTION SHALL APPLY WHETHER OR NOT THE ALLEGED BREACH, DEFAULT, NONPERFORMANCE OR FAILURE IS A BREACH OF FUNDAMENTAL CONDITION OR TERM, OR A FUNDAMENTAL BREACH. This section shall survive the termination or expiry of this Agreement.

8. TERMINATION. This Agreement is effective until terminated. All rights granted to you under this Agreement will automatically terminate if you breach any of the terms and conditions of this Agreement. In addition, either of us may terminate this Agreement at any time upon notice to the other party, for convenience. Upon any termination of this Agreement, all licenses hereunder shall terminate, other than end-user licenses previously entered into in accordance with the provisions and, during the term, of this Agreement. Upon the termination of this Agreement, you will promptly erase all copies of Mobile Connection Manager in your possession and shall discontinue all reproduction and distribution of applications or other software developed that references elements of Mobile Connection Manager.

9. EXPORT REGULATIONS. All Software and technical data delivered under this Agreement are subject to US export control laws and may be subject to export or import regulations in other countries. You agree to comply strictly with all such laws and regulations and acknowledge that you have the responsibility to obtain such licenses to export, re-export, or import as may be required after delivery to you.

10. GENERAL. This Agreement is the entire agreement with respect to this application and supercedes any other agreements or discussions, oral or written. This Agreement may not be changed except by a written amendment signed by you and us. No provision of this Agreement may be waived except in writing by the party giving the waiver. Only a signing officer of AirPrime has the authority on our behalf to change or waive this Agreement.

If any provision or term of these terms and conditions is determined to be invalid or unenforceable, the invalidity or unenforceability of that provision or term will not affect the validity or enforceability of the remaining provisions and terms or the validity or enforceability of that provision or term in any other jurisdiction.

This Agreement shall be governed and construed in accordance with the laws of the State of California. If any provision of this Agreement is declared by a court of competent jurisdiction to be invalid, illegal or unenforceable, such provisions shall be severed from the Agreement and the other provisions shall remain in full force and effect.

Should you have any questions concerning this Agreement, or if you wish to contact AirPrime, Inc., directly, you may write to:

AirPrime, Inc.,
Attn: Customer Support
2290 Cosmos Court
Carlsbad, CA 92009
USA

A

- administrator privileges
- account activation
- activation. (See also provisioning)
- code
 - manual
 - Handheld Computers
 - Notebook PCs
 - overview
 - wizard
- active connection
- aircraft (operation in)
- alert log
- alerts
- antenna
 - care & maintenance
 - proper use
 - specifications
 - regulatory notice
- auto-launch

B

- buttons
 - close
 - Go
 - menu(See also menu)
 - minimize

C

- calendar
- call log
- calls, data only
- cancel
- care & maintenance
- CD contents
- CDMA network
- CDMA Development Group (CDG)
- charges(See also payment; termination)
- close button. See buttons
- connected to (message area)
- connection
 - establish/cancel
 - history of (see also call logs)
 - troubleshooting
- Connecting
 - status of
 - troubleshooting

D

- data
 - call
- Dial-up Networking
- driver
 - definition
 - installation
 - Windows 2000
 - Windows 98SE
 - Windows ME
 - Windows XP
 - troubleshooting
- dormant connection

E

- electrical specifications
- Emergency Calls (911)
- encryption
- end session
- environmental specifications
- error messages. See troubleshooting
- ESN (electronic serial number)
- establish connection. See connection

F

- FCC
- file downloads, status of

G

- Go button. See buttons

H

- handhelds (use with)
- hardware
- failure(error)
- icon (unplug/eject)
- detection
- Windows 2000
- Windows 98SE
- Windows XP
- Windows ME
- hazards
- help (See also troubleshooting)

I

- icons(See also indicator area)
 - connecting
 - connected
 - disconnected
 - dormant
 - error
 - meanings of icons
 - Mobile Connection Manager desktop shortcut
 - signal strength
 - system tray
 - transfer/receive
 - unplug/eject
- indicator area
- meanings of icons
- insertion (and removal). See PC Card
- installation
 - automatic (Windows XP)
 - notebook PCs
 - Windows 2000
 - Windows 98SE
 - Windows ME
 - Windows XP
- Internet Explorer. See Windows
- interruptions, of service
- invoicing. See charges; payment
- IOTA

L

- liability, limitation of (see licensing)
- licensing

M

- maintenance
- memory (Notebook PC)
- Wireless Web limitations
- menu(See also buttons)
- options
- other features
- sub-menu links(See menu options)
- message area. See Mobile Connection Manager
- Message Reader
- Microsoft Outlook.
- minimize button. See buttons
- MSID (IMIS)

N

- network
 - corporate network
- no answer

O

- operating temperature
- Outlook (See Microsoft Outlook)

P

- payment
- PC3220 Wireless PC Card Modem
 - about
 - insertion and removal
 - unplug/eject
 - installation
 - uses of
- PC Card Slot, Type II (PCMCIA)
- photo example
- PCMCIA slot. See PC Card Slot; PC Card- insertion & removal)
- ports
- Mobile Connection Manager Software
 - about
 - Activation Wizard
 - desktop shortcut
 - exiting
 - help
 - installing
 - launching
 - links
 - menu options
 - message area(text & icons)
 - settings
 - uninstalling
 - version
- phone number
- profile (Data Profile)
 - errors during network provisioning
 - changing

R

- radio frequency specifications
- Ready to Connect (See also Connecting)
- regulatory information
- roaming

S

- safety (and notices)
- service area
 - outside, indications of
 - roaming
 - service not available
- signal strength
- icon
- obtaining optimal
- software
 - installation
 - Mobile Connection Manager
 - uninstallation
- sounds
 - during insertion
- specifications
- speed
- Quick Start Guide
- status
 - PC3220 Wireless PC Card status
 - location of
 - status area
- Stop button
- storage temperature
- system requirements
- system tray icon

T

- taskbar. See icons
- technical specifications
- termination of service plan
- terminate session(See end session)
- trademarks
- transmit /receive icon. See icons
- troubleshooting
 - error messages
- Type II PC Card
 - Interface type

U

- uninstalling software. See Mobile Connection Manager
- unplug/eject. See PC Card
- upgrade
 - operating system

V

- views
 - alternate view (WMI)
 - Custom Main Interface (CMI)
- voice calls

W

- Windows

- Internet Explorer 6.0
- Windows 2000
 - administrator privileges
- driver installation
 - hardware detection
 - security
 - software installation
- Windows 98SE
 - driver installation
 - hardware detection
 - security
 - software installation
- Windows ME
 - hardware detection
 - software installation
- Windows XP
 - administrator privileges
 - hardware detection
 - software installation
- Windows Main Interface (WMI). See views
