



Z2

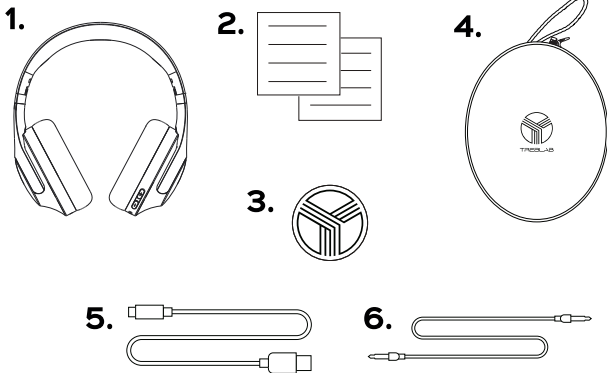
Wireless
headphones

HYBRID ACTIVE NOISE CANCELLATION

User's Manual

Please read this
manual before
using the product

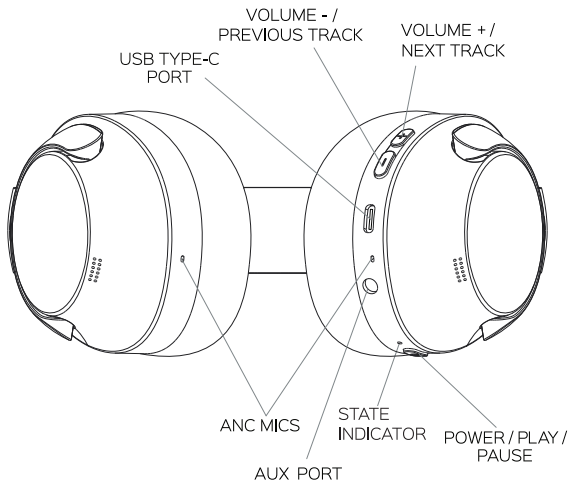




1. TREBLAB Z2 headphones
2. User's manual and quick start guide
3. TREBLAB sticker
4. Carrying case
5. USB Type-C charging
6. 3.5 mm audio cable

Thank you for choosing TREBLAB Z2!

The **TREBLAB Z2** over-ear headphones with Hybrid Active Noise Cancellation technology provide superior sound quality and the convenience of the hands-free operation.



Function	Operation
Power On	Press and hold the POWER button for 2 seconds.
Power Off	Press and hold the POWER button for 3 seconds.
Gaming mode	Press the VOLUME + and VOLUME - buttons simultaneously.
Play / Pause	Press the POWER button.
Volume +	Press the VOLUME + button.
Volume -	Press the VOLUME - button.
Next track	Press and hold the VOLUME + button for 1 second.
Previous track	Press and hold the VOLUME - button for 1 second.
Answer a phone call	Press the POWER button during an incoming call.
Reject a phone call	Press and hold the POWER button for 1 second during an incoming call.
End a phone call (Hang up)	Press the POWER button during a conversation.
Voice assistant activation	Press the POWER button three times.
Switch between ANC modes	Double-press the POWER button.

SETTING UP YOUR TREBLAB Z2

Turn on

Press the **POWER** button for 2 seconds. You will hear several sound prompts and the state indicator will start flashing pink, indicating that the headphones are in the pairing mode.

Turn off

Press and hold the **POWER** button for 3 seconds. You will hear a sound prompt and the pink state indicator will go off.

PAIRING

Make sure **TREBLAB Z2** are charged and the AUX cable is not plugged in.

1. Press the **POWER** button for 2 seconds. You will hear several sound prompts, and the state indicator will start flashing pink, indicating that the **Z2** headphones are in the pairing mode.
2. Activate the wireless communication function on your smart device and keep it within 3 feet / 1 meter from **TREBLAB Z2** while pairing.
3. Scan/search for available devices in your smart device.
4. Select **TREBLAB Z2** from the device list.
5. If prompted the password, enter "0000".

6. Once **Z2** are successfully paired and connected, you will hear the «beep» sound prompt, and the state indicator will have a steady pink light.

MULTIPOINT CONNECTION

The **TREBLAB Z2** headphones have a multipoint connection. It allows two devices to be connected at the same time. While you won't receive the input from both devices at the same time, you'll be able to switch from one device to another seamlessly.

To connect the **Z2** to the second device:

1. Temporarily switch off the wireless mode on the first device the headphones are connected to.
2. Repeat pairing steps 2-6 to connect the second device.
3. Turn on the wireless communication function back on the first device and connect the **Z2** again.

When you turn the headphones on, they will try to reconnect to the recently connected device/devices. If the reconnection does not happen automatically, the headphones will try to find the next device in the pairing list. The headphones can save the latest 6 devices.

GAMING MODE

TREBLAB Z2 headphones support the gaming mode to reduce the audio latency up to 60 ms. This allows to achieve better video/audio synchronization and improve your gaming and video-watching experience.

1. To enable the gaming mode, double-press the **POWER** button. You will hear the one-tone sound prompt and feel the lower latency while gaming/watching videos.
2. To disable the gaming mode, double-press the **POWER** button again. You will hear the two-tone sound prompt and the latency will go back to the standard 200 ms.

NOTE: In the gaming mode, the connection range is much shorter than in standard one, so, if you are experiencing some connection issues or drops, please make sure to disable the gaming mode.

AUDIO PLAYBACK

To pause and resume the playback when connected wirelessly, click the **POWER** button.

To adjust the volume, click the **VOLUME +** button to turn the volume up and **VOLUME -** button to turn the volume down.

To change tracks on **Z2**, press and hold the **VOLUME +** button for 1 second to play the next track and press and hold the **VOLUME -** button for 1 second to play the previous track.

AUX LINE-IN CONNECTION

You can connect **TREBLAB Z2** to compatible devices using the supplied AUX cable.

Plug one side of the supplied AUX cable into the AUX port on the right earcup and plug the other end into the AUX 3.5 mm port on your device.

NOTE:

Remote control for the functions NEXT, PREVIOUS, PAUSE and VOLUME adjustment by using the buttons on earcups is not supported when using the AUX cable. You will need to make all the adjustments using your smart device.

ANC/AMBIENT SOUND MODES

The **TREBLAB Z2** headphones feature Hybrid Active Noise Cancellation technology. This technology provides the ability not only to decrease the surrounding noise in the **ANC** mode but also to amplify some frequencies in the **Ambient Sound** mode to hear voices when using the **Z2** headphones.

When the **Z2** are turned on, the ANC mode is enabled automatically. To switch to the Ambient Sound mode, double-press the **POWER** button. To disable both **ANC** and **Ambient Sound** modes, double-press the **POWER** button once again.

The sound prompts and indication for the ANC modes are as follows:

ANC on	«Whap» sound prompt, state indicator is pink.
Ambient Sound	«Ring-ring» sound prompt, state indicator is pink.
ANC off	«Dong-dong» sound prompt, state indicator is white.

NOTE:

Keep the dedicated ANC microphone holes on both earcups unblocked when using the **ANC/Ambient Sound** functions.

PHONE CALLS

TREBLAB Z2 can be used to make and receive phone calls when connected wirelessly. Audio playback will be paused during the calls.

To answer a call:	Press the POWER button during an incoming call.
To reject a call:	Press and hold the POWER button for 1 second during an incoming call.
To end a call:	Press the POWER button when on a call.

VOICE ASSISTANT ACTIVATION

The **TREBLAB Z2** headphones support the voice assistant activation command. To use any of the voice assistants while in the wireless mode, press and hold the ANC button for 1 second. After the sound notification, you can transmit your voice commands using an inbuilt mic.

DISCONNECTION

You can disconnect the **Z2** headphones from the device / devices they are currently connected to.

When the headphones are on and connected, press and hold the **VOLUME +** and the **VOLUME -** buttons at the same time for 3 seconds. You will hear the sound prompt and the state indicator will start flashing pink or white (depending on the current ANC mode). In case the headphones are connected to several devices at a time, need to perform the above-mentioned steps two times in a row.

RESET TO THE FACTORY SETTINGS

You can reset the **Z2** headphones to the factory default settings by cleaning up the pairing list with the last 6 connected to **Z2** devices.

Turn the headphones on and make sure that they are disconnected from any device. Press and hold the **VOLUME +** and the **VOLUME -** buttons at the same time for 3 seconds. The headphones will automatically restart.

CHARGING AND BATTERY

When the battery is running low, you will hear the sound prompt resembling a busy tone.

To charge the headphones, plug the supplied cable into the USB Type-C charging port on the right earcup and the other end of the charging cord into a standard USB port of a wall charger or a computer. The LED light next to the charging port will turn RED. It takes up to 4 hours to charge **Z2** fully. The RED light will turn BLUE when the headphones are fully charged.

Be sure to use a 5 V DC, 0.5 - 2 A adapter or charger. Using a power source with lower power will increase the overall charging time. Unplug **Z2** from the charging cable and the cable from the power source when not in use. If left unused, a fully charged battery will lose its charge over time. We recommend charging **TREBLAB Z2** fully at least twice a month to maintain sufficient battery life.

TROUBLESHOOTING

Problem	Solution
Doesn't turn on	<p>Make sure the headphones are charged. Charge up to 4 hours until the battery is fully charged, if necessary. Press and hold the POWER button again for 2 seconds.</p>
Music is not playing	<p>Make sure that the music is playing on the source device.</p> <p>Make sure the headphones are charged.</p> <p>Make sure the AUX cable is correctly and firmly connected to the headphones if you are using the AUX mode. Make sure the AUX cable has been removed from the headphones if you are using the wireless connection.</p> <p>Make sure the volume level is not set to a 0 level on both the headphones and the device.</p> <p>Make sure that the distance between your device and the headphones is less than 30 feet / 10 meters.</p> <p>Make sure your smart device's wireless communication function is on and the device is not engaged in any kind of wired connection.</p>

**Headphones
don't pair with
my device**

Make sure the AUX cable is not plugged in. Make sure the headphones are not paired with any other two devices, as they can pair only with two devices at a time.

Make sure that the distance between your device and the headphones is less than 30 feet / 10 meters.

Make sure your smart device's wireless communication function is on and the device is not engaged in any kind of wired connection.

Reset your headphones to the factory settings by following the steps from the previous section. Try to pair again.

**Headphones
are visible on
my device, but
do not connect**

Make sure the headphones are not paired with any other two devices, as they can pair only with two devices at a time.

Make sure that the distance between your device and the headphones is less than 30 feet / 10 meters.

Reset your headphones to the factory settings by following the steps from the previous section. Try to pair again.

I cannot find a wireless driver for on my laptop

Make sure your laptop supports the wireless connection. If it doesn't, you will need an external wireless USB adapter compatible with your laptop. For further details, consult with your laptop manufacturer.

Frequent disconnection and noise

Make sure that the distance between your device and the headphones is less than 30 feet / 10 meters. Make sure that nothing is blocking the signal between your device and **Z2**. Check if the headphones are running out of power.

SAFETY RULES

- ❶ Don't disassemble or modify your headphones for any reason. Doing this may cause the headphones to malfunction or become combustible. The damage to your device can void your warranty.
- ❷ Do not let your device get wet – liquids can cause serious damage. Damage to your device caused by water can void your warranty.

- ❶ Make sure the headphones are completely dry before charging.
- ❷ Avoid exposing **TREBLAB Z2** to extreme temperatures (below 37°F / 3°C or above 112°F / 45°C). Extreme temperatures can cause the deformation of the **Z2** components, reduce the battery life and the lifespan of your new headphones.
- ❸ Don't put the device's LED lights close to humans' or animals' eyes.
- ❹ Do not use your **Z2** during a thunderstorm. Thunderstorms can cause serious malfunction and increase the risk of electric shock.

FCC STATEMENTS

FCC Compliance Statement - Part 15

This device complies with Part 15 of the FCC Rules. Operation is subject to the following two conditions:

1. This device may not cause harmful interference, and
2. This device must accept any interference received, including interference that may cause undesired operation.

Any changes or modifications not expressly approved by the party responsible for compliance could void the user's authority to operate the equipment.

FCC Interference Statement - Part 15

This equipment has been tested and found to comply with the limits for a Class B digital device, pursuant to Part 15 of the FCC Rules. These limits are designed to provide reasonable protection against harmful interference in a residential installation. This equipment generates, uses and can radiate radio frequency energy and, if not installed and used in accordance with the instructions, may cause harmful interference to radio communications. However, there is no guarantee that interference will not occur in a particular installation. If this equipment does cause harmful interference to radio or television reception, which can be determined by turning the equipment off and on, the user is encouraged to try to correct the interference by one of the following measures:

- Reorient or relocate the receiving antenna
- Increase the separation between the equipment and receiver.
- Connect the equipment into an outlet on a circuit different from that to which the receiver is connected.
- Consult the dealer or an experienced radio/TV technician for help.

RF Exposure Information

The device has been evaluated to meet general RF exposure requirements. The device can be used in portable exposure conditions without restriction.

RECYCLING

The headphones can be recycled, and they should be in order to keep our planet clean. Where should you bring them?

In the **US**, there are a couple of options:

<https://www.call2recycle.org>

<https://search.earth911.com>

<https://recyclenation.com/find>

<https://www.cta.tech/Consumer-Resources/Greener-Gadgets>

In **Canada**, please visit the links below:

<https://thinkreuse.net>

<https://www.call2recycle.ca>

In the **UK**, please visit the links below:

<https://www.recycle-more.co.uk/>

<https://www.recyclenow.com/local-recycling>

SPECIFICATIONS

Speaker unit: Ø40 mm, 32Ω

Charging port: USB Type-C

Dimensions: 208 x 178 x 85 mm / 8.18 x 7 x 3.34 in

Weight: 243 g / 8.57 oz / 0.53 lb

THANK YOU

We truly appreciate that you chose **TREBLAB** as your trusted brand of wireless ANC headphones. Our team sincerely hopes that you enjoy the great sound and seamless usability that **TREBLAB Z2** provide. We love making our customers happy by providing true value with our products. If for any reason you are not completely satisfied with your purchase or have any questions, please let us know by contacting us at **http://treblab.com/contact_us**. We care about our customers most of all and are always here to serve you.

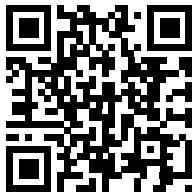


TREBLAB

1 YEAR FULL WARRANTY
Parts & Labor Warranty

Please visit www.treblab.com
to register YOUR product.
Designed by Productech in the U.S.

Wireless headphones
Z2



Made in China



WARNING: This product can expose you to Bisphenol A, which is known to the State of California to cause cancer. For more information, go to www.P65Warnings.ca.gov