

05 FAQ

Q1. Why cannot the printer print correctly after loading the label?

A1. Please connect the printer to the app, and print a label to rectify.

Q2. Why do I need to open the geographic location and address book when using the App for android?

A2. It is Google's rule. Our App needs to abide by this rule on the Google platform. But please rest assured that we will firmly protect user privacy.

Q3. Why cannot the printer connect to Bluetooth and print?

A3. You first need to search for "Munbyn Print" through Google Play or scan the QR code to download the App, then open the App to connect to Bluetooth.

Q4. Why does the App crash?

A4. Please uninstall and reinstall the latest App.

Q5. Why is the print not clear?

A5. There are many factors that affect print clarity. First, please make sure that the battery is full. Second, adjust the font size, font type and concentration. If the above methods do not work, wipe the print head with an alcohol swab.

Q6. Why is the printing response time long sometimes?

A6. The reason is that the Bluetooth transmission speed of the cell phone is slow. Please be patient.

06 Support

MUNBYN provides 18 months' warranty and lifetime free service.

If you encounter any issues with the product, please contact the **MUNBYN** team to promptly receive troubleshooting tips or a replacement.

Email: support@munbyn.com (24-7 online support)

Website: www.munbyn.com (how-to videos)

WhatsApp: +8617817881067

Phone: +14034771911



MUNBYN

Focus on
Every Powerful
Moment

Version: 1.00

MUNBYN

User Manual



Contents

01 Packing Introduction.....	1
02 Specification.....	2
03 Operation.....	3
04 Quick Connection.....	5
05 FAQ.....	6
06 Support.....	8

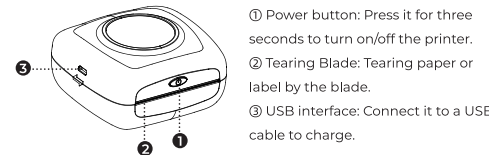
01 Packing Introduction

1.1 What's in the box?



Some stickers will also be included in your package, please feel free to paste it on your label maker.

1.2 Product Description

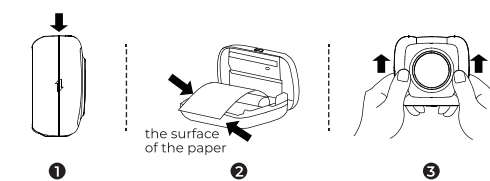


02 Specification

Printing method	Thermal Direct
Resolution	203dpi, 8dots/mm
Print speed	10mm~15mm/s
Interface	USB+Bluetooth
Lithium Battery	1100mAh
Power Adaptor (Output)	5V-1A
Label width	58mm Max
Working Temperature(°C)	0°C ~ 50°C
Working Humidity	10~90% (Non-condensing)
Storage Temperature(°C)	-20 ~ 70°C
Storage Humidity	5~95% (Non-condensing)
Printing life	50km
Operating system	Android/iOS

03 Operation

3.1 Paper Setup



① Open the cover: According to picture ①, push the upper cover down to open the cover.

② Consumables: According to picture ②, the thermal surface of the paper should face the thermal head.

③ Close the cover: After putting in the consumables, push the upper cover up as shown in the picture to close the cover.

3.2 Power Light Status

Indicator light	Status	Situation
Green	Light	Fully charged/Normal use/Bluetooth connected
Red	Light	Cover opened/Out of paper/Charging/printer head overheating
Red	Flash Slowly	Low power

3.3 Functions of The Power Button

Button	Operation method	Functions
Power button	Double click	Print self-test paper
Power button	Press for three seconds	Power on/power off

04 Quick Connection

① Search “Munbyn Print” on App Store or Google Play to get the app.



② Or please scan the QR code to download the app.



FCC Warning Statement: Changes or modifications to this unit not expressly approved by the party responsible for compliance could void the user's authority to operate the equipment. This equipment has been tested and found to comply with the limits for a Class B digital device, pursuant to Part 15 of the FCC Rules. These limits are designed to provide reasonable protection against harmful interference in a residential installation. This equipment generates, uses and can radiate radio frequency energy and, if not installed and used in accordance with the instructions, may cause harmful interference to radio communications.

However, there is no guarantee that interference will not occur in a particular installation. If this equipment does cause harmful interference to radio or television reception, which can be determined by turning the equipment off and on, the user is encouraged to try to correct the interference by one or more of the following measures:

- Reorient or relocate the receiving antenna.
- Increase the separation between the equipment and receiver.
- Connect the equipment into an outlet on a circuit different from that to which the receiver is connected.
- Consult the dealer or an experienced radio/TV technician for help.

This device complies with Part 15 of the FCC Rules. Operation is subject to the following two conditions: (1) this device may not cause harmful interference, and (2) this device must accept any interference received, including interference that may cause undesired operation.

FCC Radiation Exposure Statement

The device has been evaluated to meet general RF exposure requirement. The device can be used in portable exposure condition without restriction.