

MaxFighter Force Feedback F-33 Joystick User's Guide

FEDERAL COMMUNICATIONS COMMISSION

This device complies with Part 15 of the FCC Rules. Operation is subject to the following two conditions: (1) this device may not cause harmful interference, and (2) this device must accept any interference received, including interference that may cause undesired operation.

NOTE

This equipment has been tested and found to comply with the limits for a Class B digital device, pursuant to Part 15 of the FCC Rules. These limits are designed to provide reasonable protection. This equipment generates, uses and can radiate radio frequency energy and, if not installed and used in accordance with the instructions, may cause harmful interference to radio communications. However, there is no guarantee that interference will not occur in a particular installation. If this equipment does cause harmful interference to radio or television reception, which can be determined by turning the equipment off and on, the user is encouraged to try to correct the interference by one or more of the following measures:

- Reorient or relocate the receiving antenna.
- Increase the separation between the equipment and receiver.
- Connect the equipment into an outlet on a circuit different from that to which the receiver is connected.
- Consult the dealer or an experienced radio/TV technician for help.

Shielded interface cables (except Output power cord) must be used in order to comply with emission limits.

Changes or modifications not expressly approved by the party responsible for compliance could void the user's authority to operate the equipment.

Before you installation

Check your system must have the following:

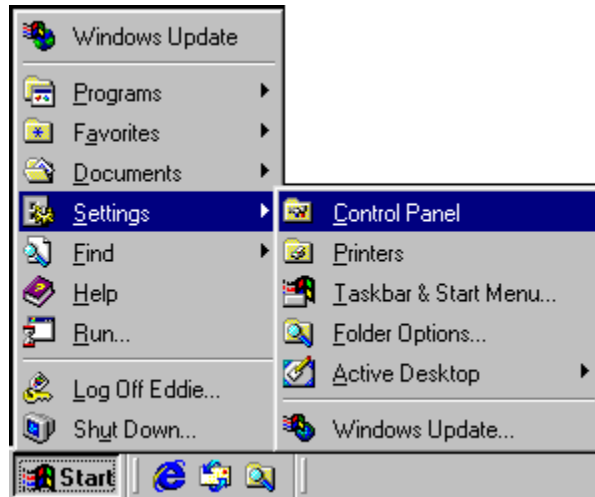
- IBM[™]-Compatible PC, with Pentium[®] processor or faster
- 16MB RAM minimum
- 10MB hard-disk space
- CD-ROM Drive
- One dedicated USB port or 9 pin serial port
- Windows[®] 95/98
- An installed mouse

Check you must have the following:

- MaxFighter Force Feedback F-33 Joystick
- Genius Force Feedback Game Device Software CD

Install the MaxFighter Force Feedback F-33 Joystick software

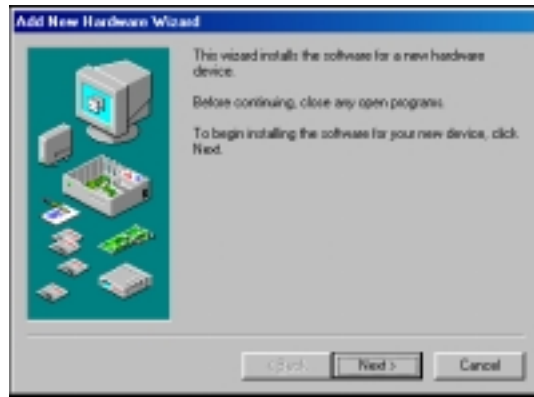
1. Do not connect the MaxFighter Force Feedback F-33 Joystick to your computer until after you have installed the Genius Force Feedback Game Device Software.
2. With your computer running, insert the Genius Force Feedback Game Device Software CD into the CD-ROM drive of your computer.
3. Click **Start**, point to **Settings**, and then click **Control Panel**.



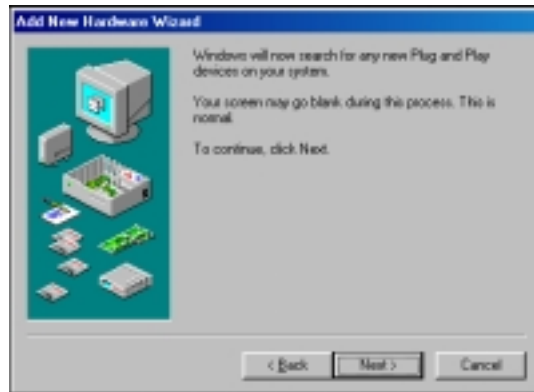
4. Double-click **Add New Hardware**.



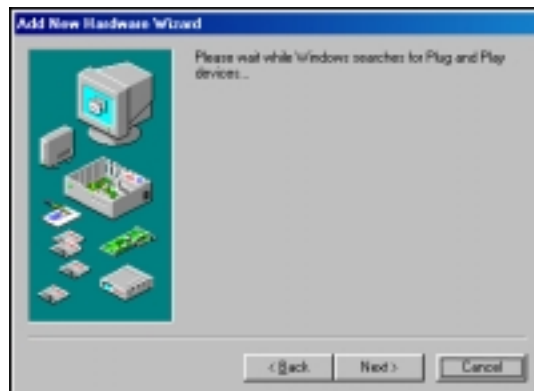
5. Click **Next**.



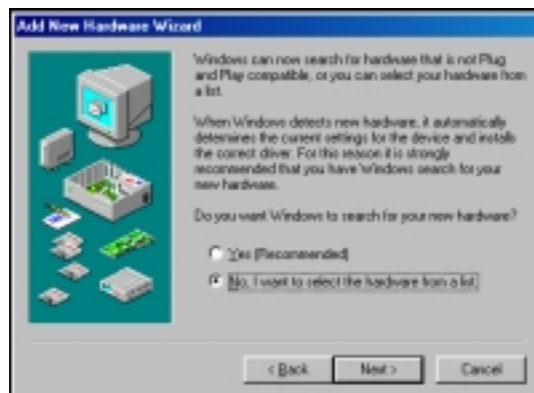
6. Click **Next**.



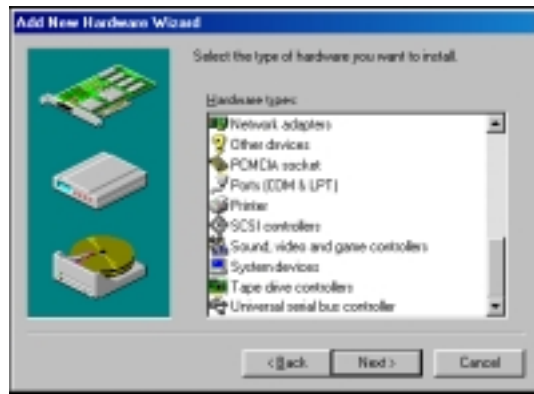
7. Click **Next**.



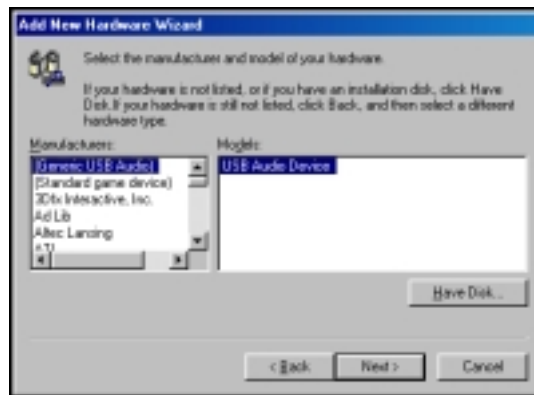
8. Choose **No**, and then click **Next**.



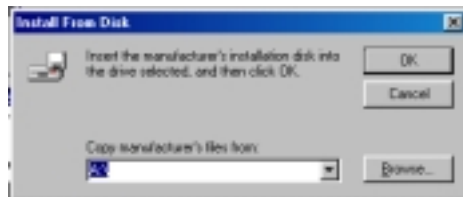
9. Select **Sound, video and game controllers**, and then click **Next**.



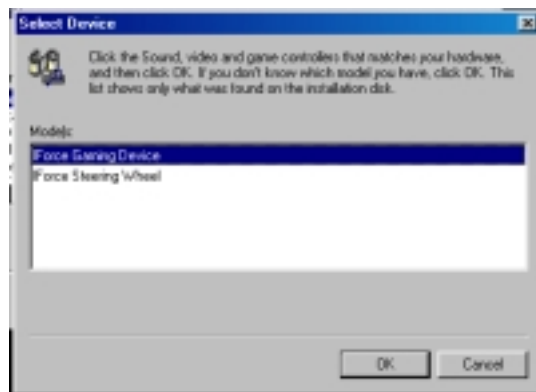
10. Click **Have Disk**.



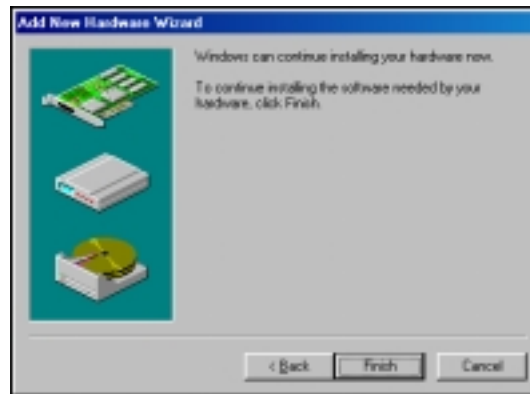
11. Type **D:** and press the **Enter** key, where “D:” is the drive designation of your CD-ROM drive.



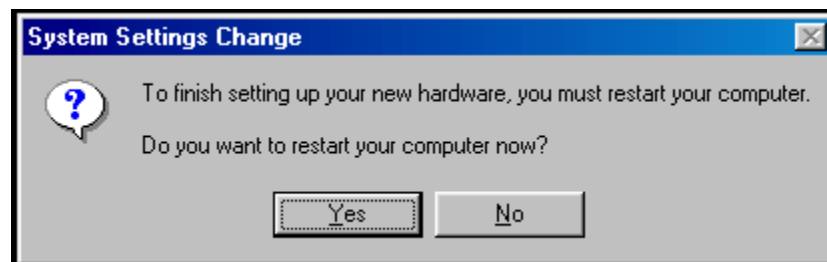
12. Select **iForce Gaming Device**, and then click **OK**.



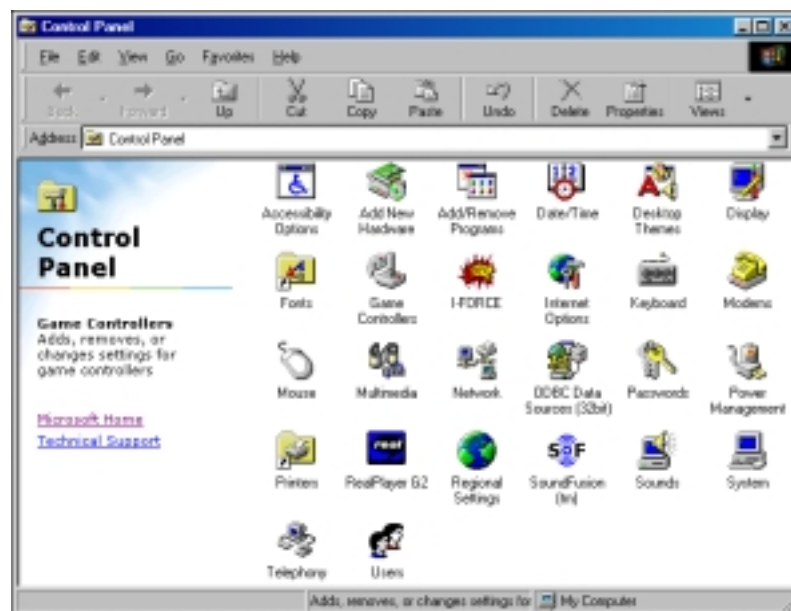
13. Click **Finish**.



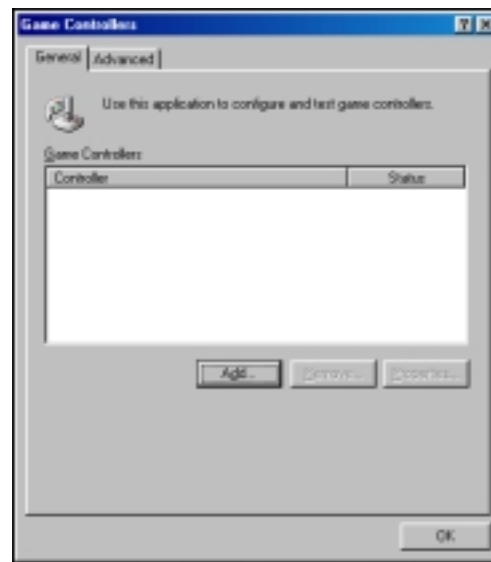
14. Click **Yes** to restart your computer.



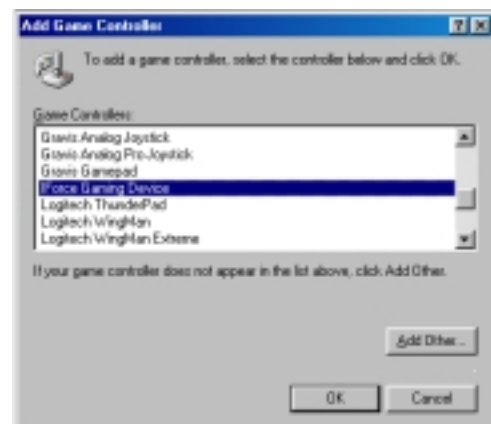
15. After your computer restart, the **Control Panel** should still appear on screen. Double-click **Game Controllers**.



16. Click **Add**.

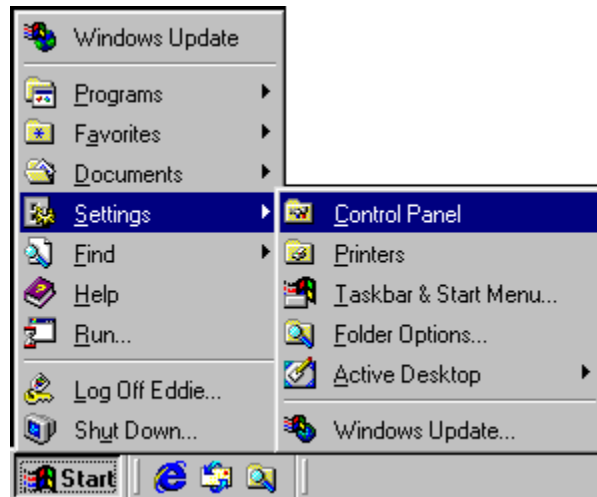


17. Select **iForce Gaming Device**, and then click **OK** to complete software installation.



More about the Genius Force Feedback Game Device Software

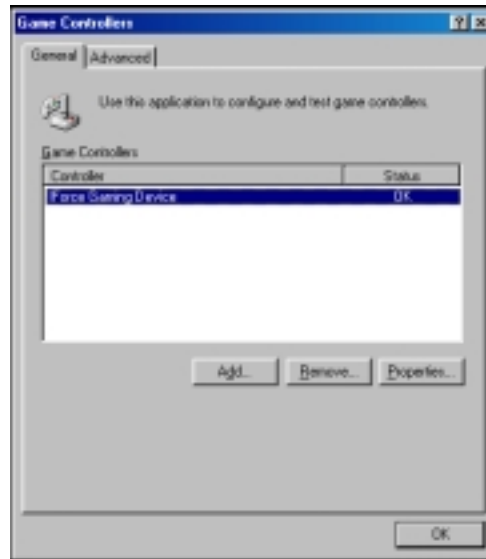
1. Make sure to install the Genius Force Feedback Game Device Software first, then shut down your computer.
2. Connect the MaxFighter Force Feedback F-33 Joystick to your computer, and restart your computer.
3. Click **Start**, point to **Settings**, and then click **Control Panel**.



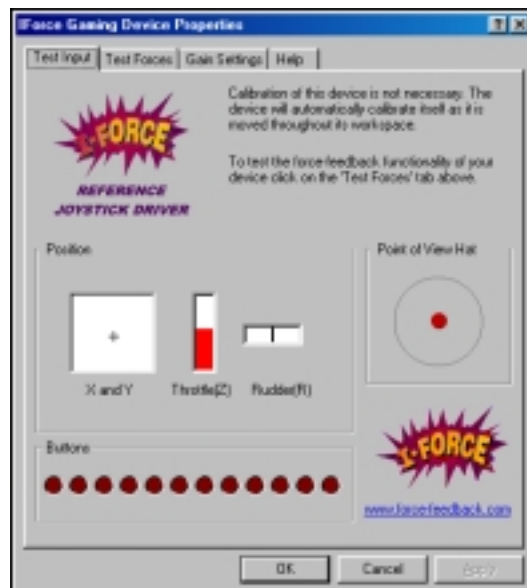
4. Double-click **Game Controllers**.



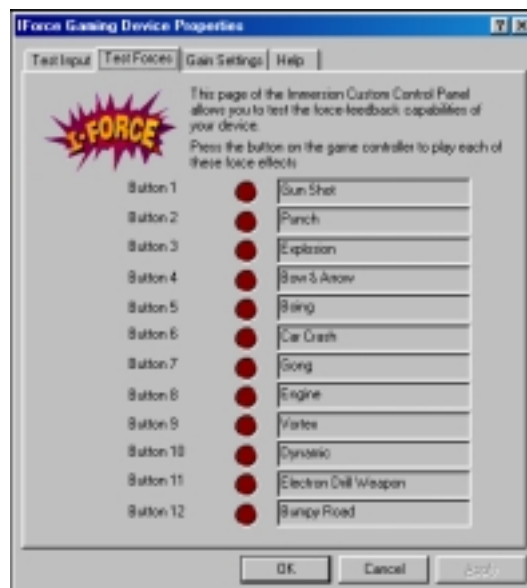
5. Click **Properties**.



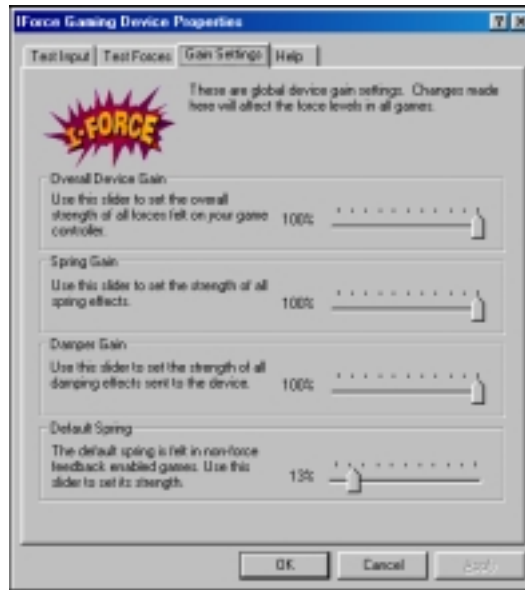
6. On the **Test Input** tab, you can test all function on your game device.



7. On the **Test Force** tab, you can play each default force effects.



8. On the **Gain Settings** tab, you can set the force levels.



9. On the **Help** tab, you can get more information.

