

Declaration of Equivalence

For declaration of equality between a product variant to be certified with reference to an original product.

To be issued and signed by the company responsible for the product variant.

Declare on our sole responsibility that the product

- Original Model

Product Information	
Product ID:	SRR30SA

are in all relevant parts identical to the product

- Variant Model

Product Information	
Product ID:	SRR30SB

- The difference between (original design) and (variant design) is :

SRR30SB
LED Driver Remove parts

We, the undersigned, hereby declare that the Second Manufacturer Design is identical in both design and implementation.

Signed by

Company Name : HL Klemove Corp.

Korea / 20 July, 2023

(Place, date of issue)

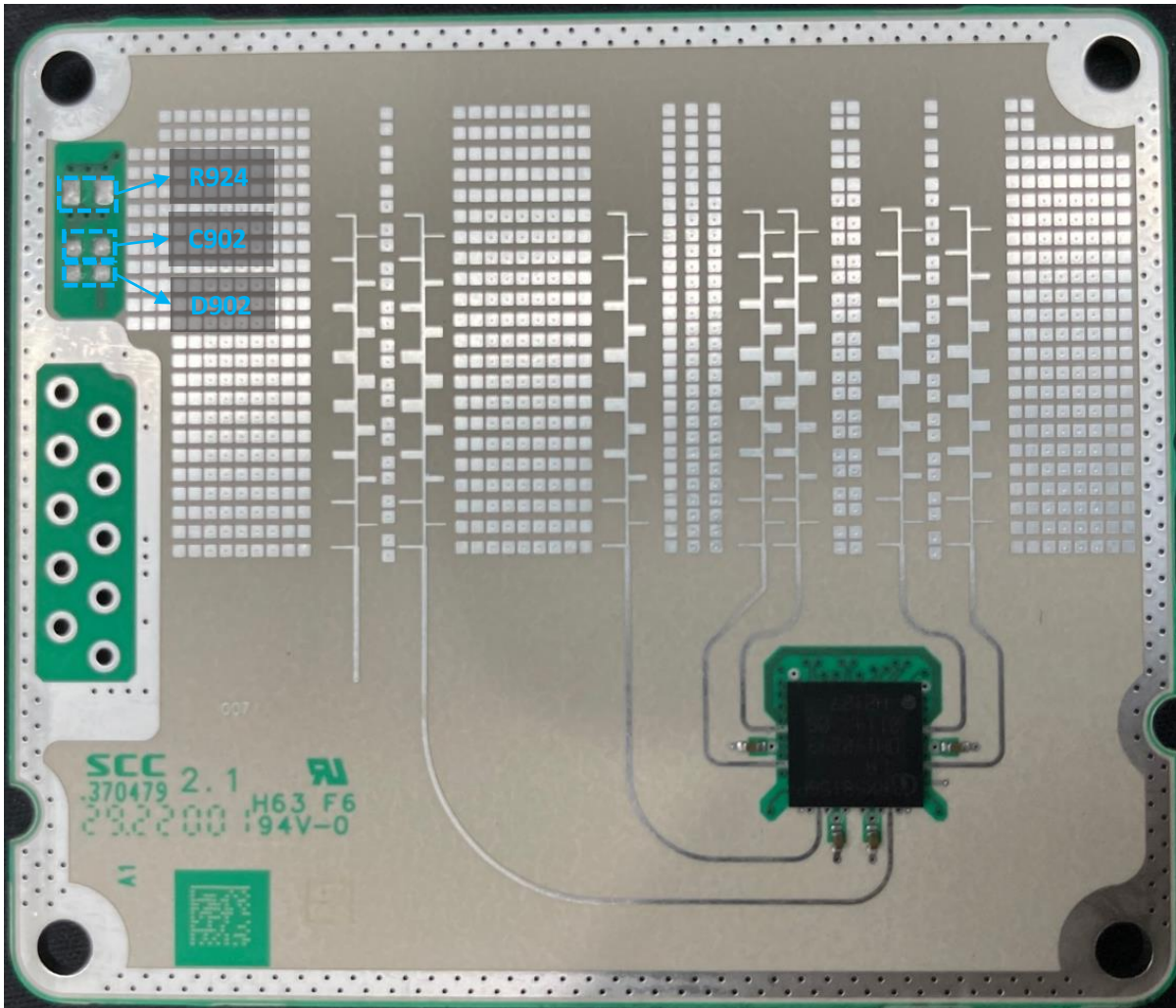


(Signature / stamp)

Hyung Suk Ham/Manager

1. SRR-30 PCB

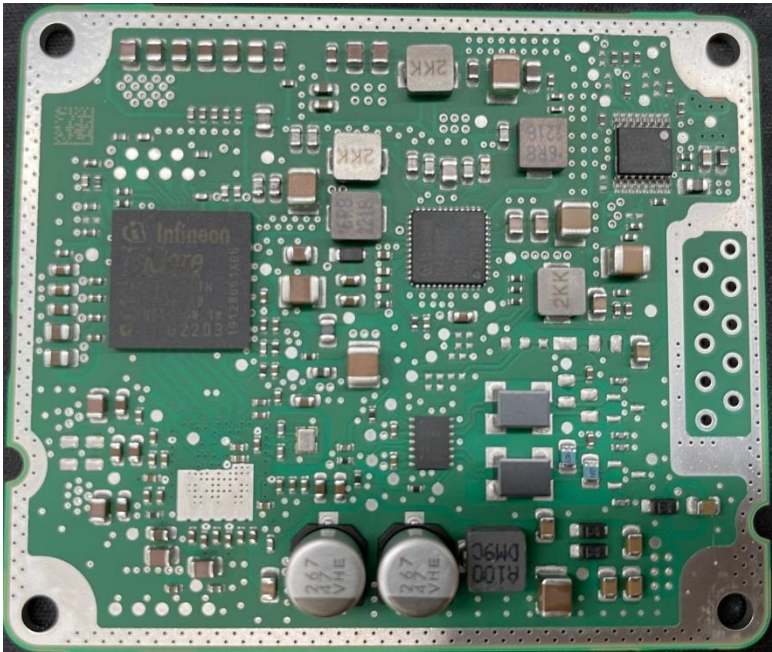
- TOP : SRR30SA/SRR30SB same



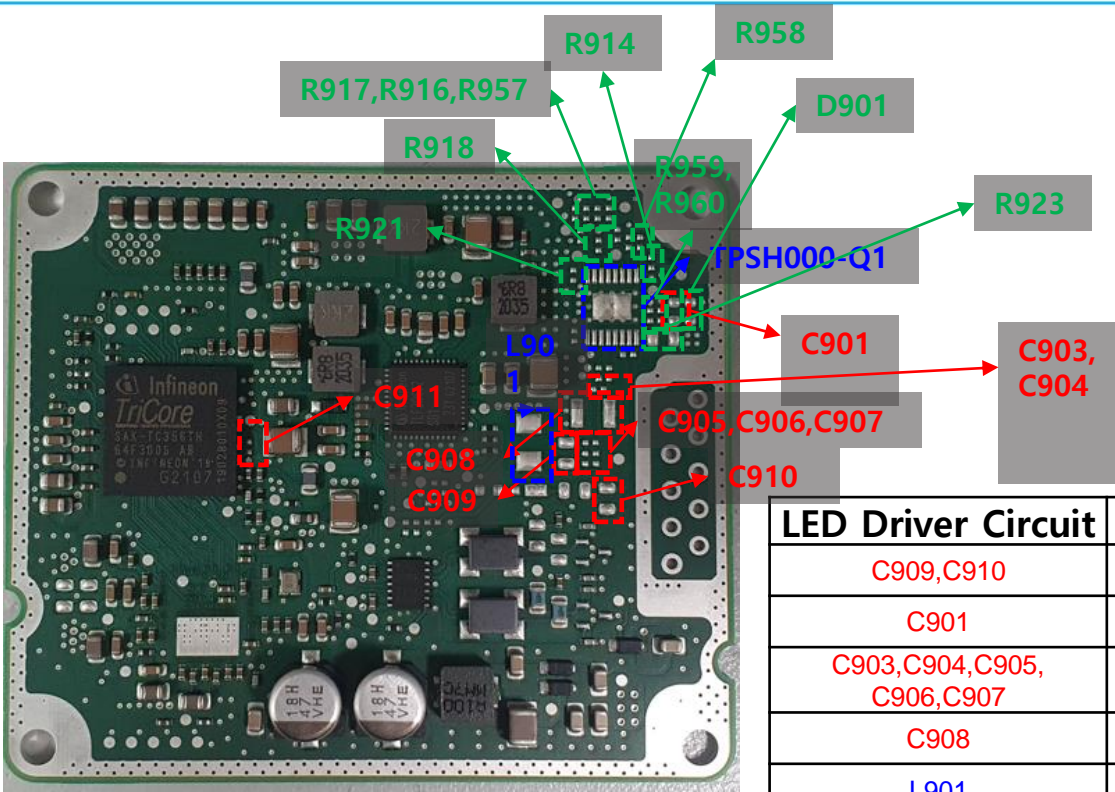
Reference	QTY
R924	1
C902	1
D902	1

1. SRR-30 PCB

- BOTTOM



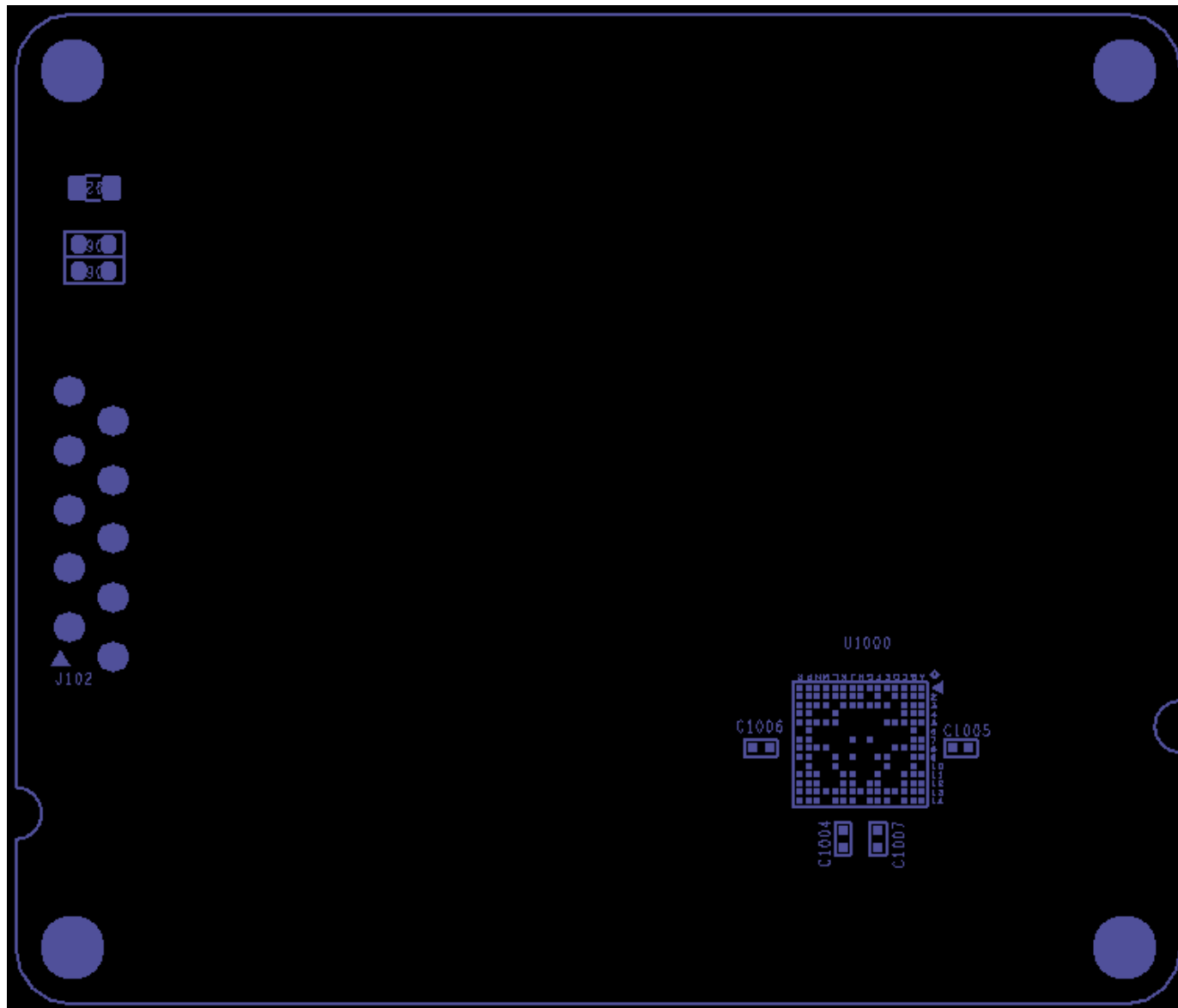
SRR30SA



SRR30SB : LED Driver Remove parts

LED Driver Circuit	QTY
C909,C910	2
C901	1
C903,C904,C905, C906,C907	5
C908	1
L90	1
R959	1
R960	1
C911	1
R923	1
D901	1
R901	1
R914,R916,R917, R918,R957,R958	6
R921	1
TPSH000-Q1	1

2. SRR-30 Top Gerber



Thank You

