

Test Laboratory: Huatongwei International Inspection Co., Ltd.,SAR Lab

Date: 12/25/2018

LTE Band 4-Head

Communication System: UID 0, Generic LTE-FDD (0); Frequency: 1732.5 MHz;Duty Cycle: 1:1
 Medium parameters used (interpolated): $f = 1732.5$ MHz; $\sigma = 1.363$ S/m; $\epsilon_r = 41.972$; $\rho = 1000$ kg/m³

Phantom section: Right Section

Ambient Temperature:23.0°C;Liquid Temperature:22.6°C;

DASY Configuration:

- Probe: EX3DV4 - SN7494; ConvF(9.23, 9.23, 9.23) @ 1732.5 MHz; Calibrated: 2/26/2018
- Sensor-Surface: 1.4mm (Mechanical Surface Detection)
- Electronics: DAE4 Sn1549; Calibrated: 4/25/2018
- Phantom: Twin-SAM V8.0 ; Type: QD 000 P41 AA; Serial: 1974
- DASY52 52.10.2(1495); SEMCAD X 14.6.12(7450)

Right Cheek Touch/CH 20175/Area Scan (61x111x1): Interpolated grid: dx=1.500 mm,
 dy=1.500 mm

Maximum value of SAR (interpolated) = 0.0469 W/kg

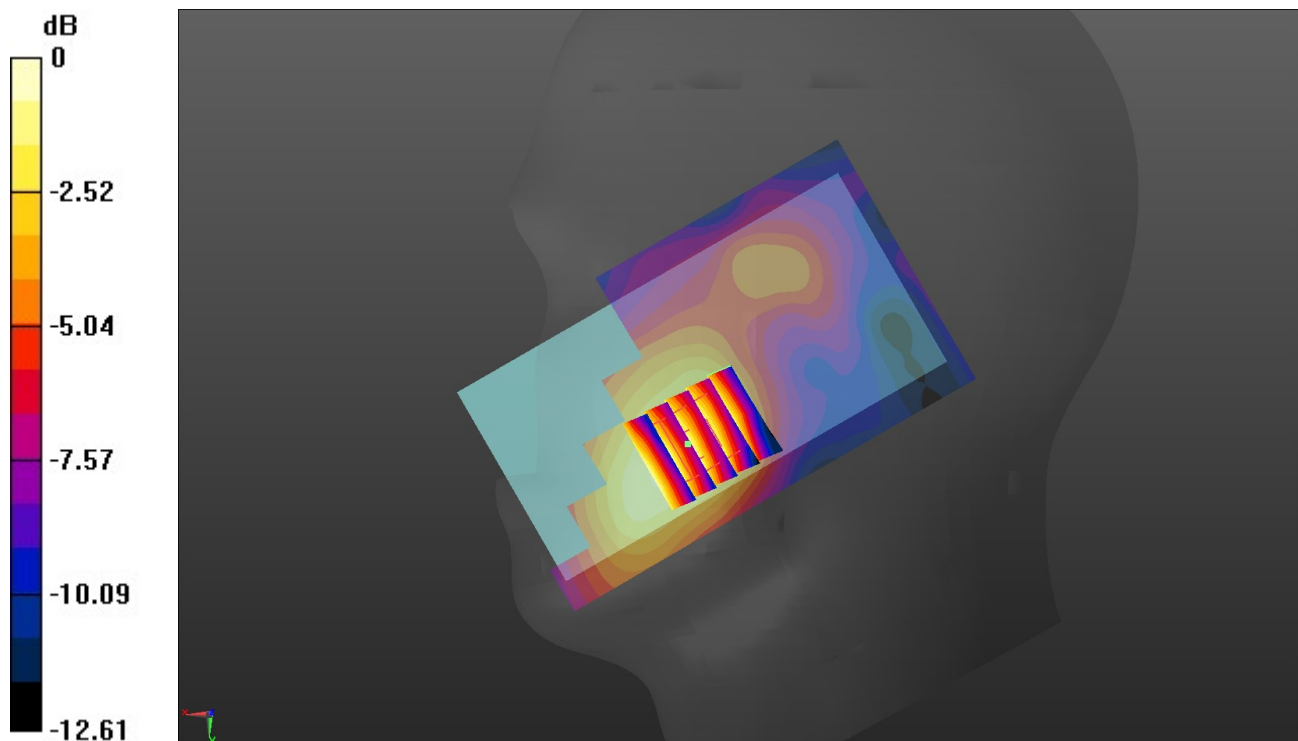
Right Cheek Touch/CH 20175/Zoom Scan (5x5x7)/Cube 0: Measurement grid: dx=8mm,
 dy=8mm, dz=5mm

Reference Value = 1.670 V/m; Power Drift = -0.16 dB

Peak SAR (extrapolated) = 0.0540 W/kg

SAR(1 g) = 0.036 W/kg; SAR(10 g) = 0.024 W/kg

Maximum value of SAR (measured) = 0.0457 W/kg



0 dB = 0.0457 W/kg = -13.40 dBW/kg

Test Laboratory: Huatongwei International Inspection Co., Ltd.,SAR Lab

Date: 12/25/2018

LTE Band 4-Body

Communication System: UID 0, Generic LTE-FDD (0); Frequency: 1732.5 MHz;Duty Cycle: 1:1
 Medium parameters used (interpolated): $f = 1732.5$ MHz; $\sigma = 1.43$ S/m; $\epsilon_r = 53.892$; $\rho = 1000$ kg/m³

Phantom section: Flat Section

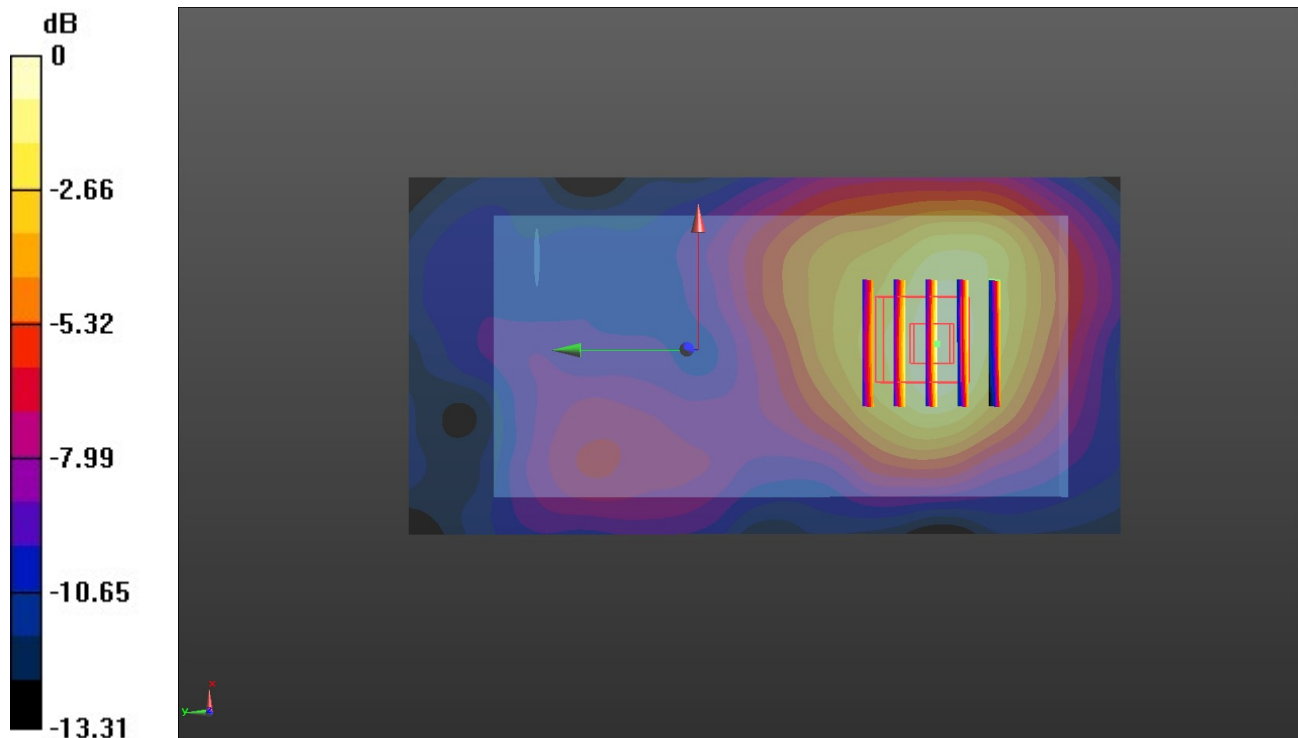
Ambient Temperature:22.8°C;Liquid Temperature:22.7°C;

DASY Configuration:

- Probe: EX3DV4 - SN7494; ConvF(8.77, 8.77, 8.77) @ 1732.5 MHz; Calibrated: 2/26/2018
- Sensor-Surface: 1.4mm (Mechanical Surface Detection)
- Electronics: DAE4 Sn1549; Calibrated: 4/25/2018
- Phantom: ELI V8.0 ; Type: QD OVA 004 AA ; Serial: 2078
- DASY52 52.10.2(1495); SEMCAD X 14.6.12(7450)

Front/CH 20175/Area Scan (61x121x1): Interpolated grid: dx=1.500 mm, dy=1.500 mm
 Maximum value of SAR (interpolated) = 0.0834 W/kg

Front/CH 20175/Zoom Scan (5x5x7)/Cube 0: Measurement grid: dx=8mm, dy=8mm, dz=5mm
 Reference Value = 3.289 V/m; Power Drift = -0.15 dB
 Peak SAR (extrapolated) = 0.0970 W/kg
SAR(1 g) = 0.061 W/kg; SAR(10 g) = 0.039 W/kg
 Maximum value of SAR (measured) = 0.0839 W/kg



0 dB = 0.0839 W/kg = -10.76 dBW/kg

Test Laboratory: Huatongwei International Inspection Co., Ltd.,SAR Lab

Date: 12/22/2018

LTE Band 5-Head

Communication System: UID 0, Generic LTE-FDD (0); Frequency: 836.5 MHz;Duty Cycle: 1:1

Medium parameters used (interpolated): $f = 836.5$ MHz; $\sigma = 0.933$ S/m; $\epsilon_r = 42.599$; $\rho = 1000$ kg/m³

Phantom section: Right Section

Ambient Temperature:22.9°C;Liquid Temperature:22.4°C;

DASY Configuration:

- Probe: EX3DV4 - SN7494; ConvF(10.73, 10.73, 10.73) @ 836.5 MHz; Calibrated: 2/26/2018
- Sensor-Surface: 1.4mm (Mechanical Surface Detection)
- Electronics: DAE4 Sn1549; Calibrated: 4/25/2018
- Phantom: Twin-SAM V8.0 ; Type: QD 000 P41 AA; Serial: 1974
- DASY52 52.10.2(1495); SEMCAD X 14.6.12(7450)

Right Cheek Touch/CH 20525/Area Scan (61x111x1): Interpolated grid: dx=1.500 mm, dy=1.500 mm

Maximum value of SAR (interpolated) = 0.156 W/kg

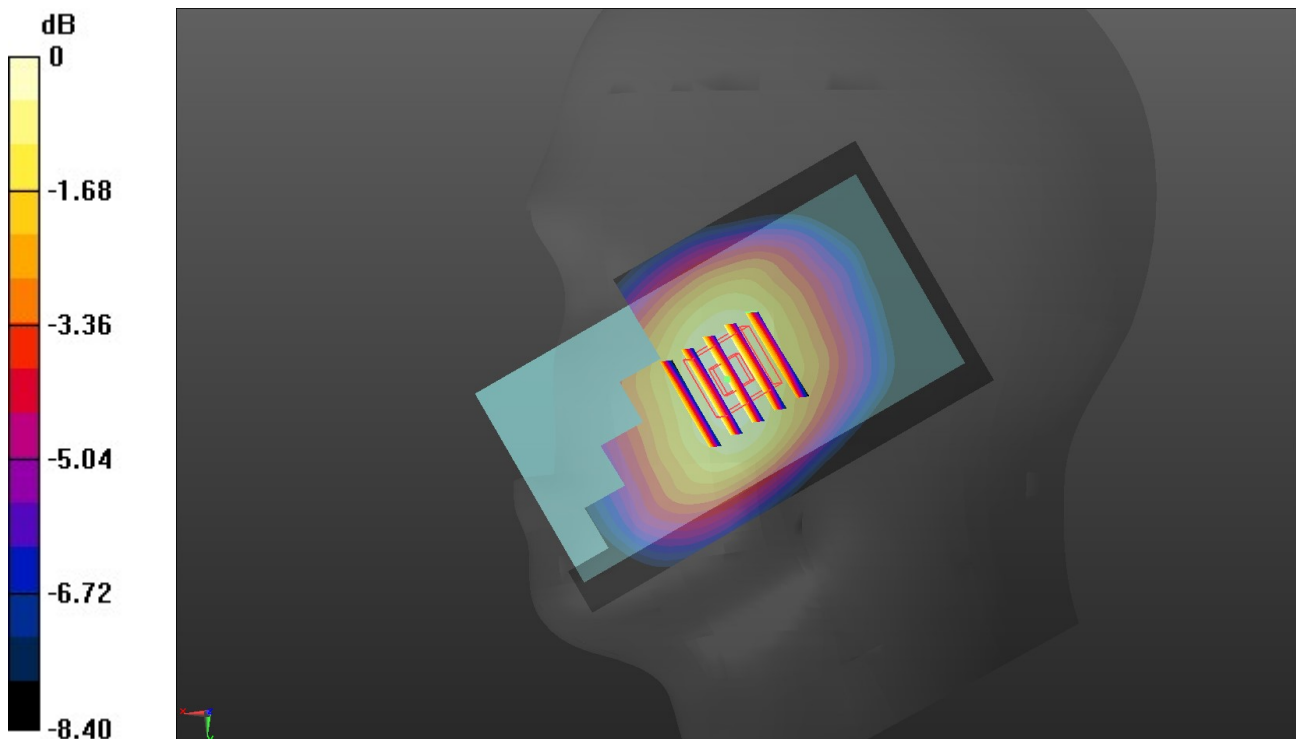
Right Cheek Touch/CH 20525/Zoom Scan (5x5x7)/Cube 0: Measurement grid: dx=8mm, dy=8mm, dz=5mm

Reference Value = 4.800 V/m; Power Drift = -0.01 dB

Peak SAR (extrapolated) = 0.168 W/kg

SAR(1 g) = 0.130 W/kg; SAR(10 g) = 0.099 W/kg

Maximum value of SAR (measured) = 0.156 W/kg



0 dB = 0.156 W/kg = -8.07 dBW/kg

Test Laboratory: Huatongwei International Inspection Co., Ltd.,SAR Lab

Date: 12/24/2018

LTE Band 5-Body

Communication System: UID 0, Generic LTE-FDD (0); Frequency: 836.5 MHz;Duty Cycle: 1:1

Medium parameters used (interpolated): $f = 836.5$ MHz; $\sigma = 0.967$ S/m; $\epsilon_r = 55.399$; $\rho = 1000$ kg/m³

Phantom section: Flat Section

Ambient Temperature:22.9°C;Liquid Temperature:22.7°C;

DASY Configuration:

- Probe: EX3DV4 - SN7494; ConvF(10.5, 10.5, 10.5) @ 836.5 MHz; Calibrated: 2/26/2018
- Sensor-Surface: 1.4mm (Mechanical Surface Detection)
- Electronics: DAE4 Sn1549; Calibrated: 4/25/2018
- Phantom: ELI V8.0 ; Type: QD OVA 004 AA ; Serial: 2078
- DASY52 52.10.2(1495); SEMCAD X 14.6.12(7450)

Front/CH 20525/Area Scan (61x121x1): Interpolated grid: dx=1.500 mm, dy=1.500 mm

Maximum value of SAR (interpolated) = 0.155 W/kg

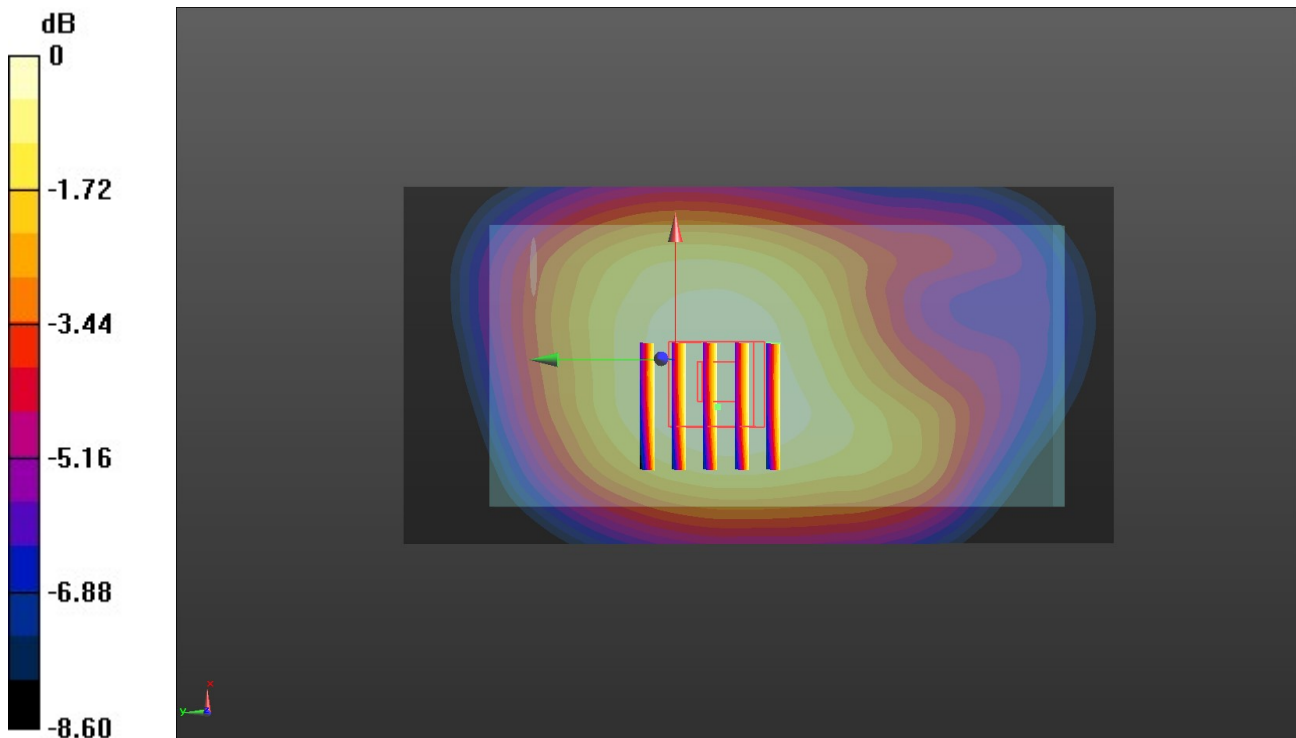
Front/CH 20525/Zoom Scan (5x5x7)/Cube 0: Measurement grid: dx=8mm, dy=8mm, dz=5mm

Reference Value = 12.82 V/m; Power Drift = -0.00 dB

Peak SAR (extrapolated) = 0.171 W/kg

SAR(1 g) = 0.126 W/kg; SAR(10 g) = 0.098 W/kg

Maximum value of SAR (measured) = 0.153 W/kg



0 dB = 0.153 W/kg = -8.15 dBW/kg

Test Laboratory: Huatongwei International Inspection Co., Ltd.,SAR Lab

Date: 1/23/2019

LTE Band 7-Head

Communication System: UID 0, Generic LTE-FDD (0); Frequency: 2535 MHz;Duty Cycle: 1:1

Medium parameters used: $f = 2535$ MHz; $\sigma = 1.914$ S/m; $\epsilon_r = 40.778$; $\rho = 1000$ kg/m³

Phantom section: Right Section

Ambient Temperature:23.0°C;Liquid Temperature:22.7°C;

DASY Configuration:

- Probe: EX3DV4 - SN7494; ConvF(7.92, 7.92, 7.92) @ 2535 MHz; Calibrated: 2/26/2018
- Sensor-Surface: 1.4mm (Mechanical Surface Detection)
- Electronics: DAE4 Sn1549; Calibrated: 4/25/2018
- Phantom: Twin-SAM V8.0 ; Type: QD 000 P41 AA; Serial: 1974
- DASY52 52.10.2(1495); SEMCAD X 14.6.12(7450)

Right Cheek Touch/CH 21100/Area Scan (71x141x1): Interpolated grid: dx=1.200 mm, dy=1.200 mm

Maximum value of SAR (interpolated) = 0.412 W/kg

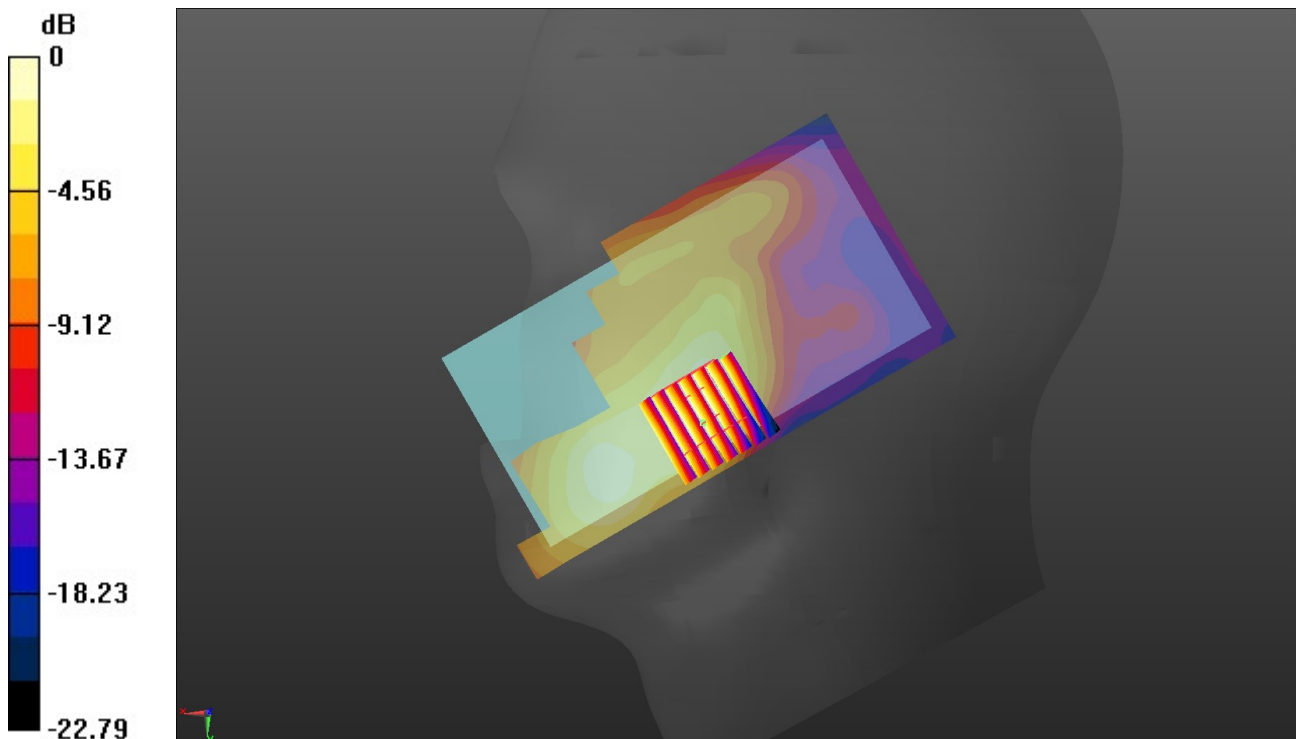
Right Cheek Touch/CH 21100/Zoom Scan (7x7x7)/Cube 0: Measurement grid: dx=5mm, dy=5mm, dz=5mm

Reference Value = 2.600 V/m; Power Drift = -0.14 dB

Peak SAR (extrapolated) = 0.484 W/kg

SAR(1 g) = 0.277 W/kg; SAR(10 g) = 0.150 W/kg

Maximum value of SAR (measured) = 0.399 W/kg



0 dB = 0.399 W/kg = -3.99 dBW/kg

Test Laboratory: Huatongwei International Inspection Co., Ltd.,SAR Lab

Date: 1/24/2019

LTE Band 7-Body

Communication System: UID 0, Generic LTE-FDD (0); Frequency: 2535 MHz;Duty Cycle: 1:1

Medium parameters used: $f = 2535$ MHz; $\sigma = 2.082$ S/m; $\epsilon_r = 52.884$; $\rho = 1000$ kg/m³

Phantom section: Flat Section

Ambient Temperature:22.9°C;Liquid Temperature:22.7°C;

DASY Configuration:

- Probe: EX3DV4 - SN7494; ConvF(7.51, 7.51, 7.51) @ 2535 MHz; Calibrated: 2/26/2018
- Sensor-Surface: 1.4mm (Mechanical Surface Detection)
- Electronics: DAE4 Sn1549; Calibrated: 4/25/2018
- Phantom: ELI V8.0 ; Type: QD OVA 004 AA ; Serial: 2078
- DASY52 52.10.2(1495); SEMCAD X 14.6.12(7450)

Front/CH 21100/Area Scan (81x131x1): Interpolated grid: dx=1.200 mm, dy=1.200 mm

Maximum value of SAR (interpolated) = 0.684 W/kg

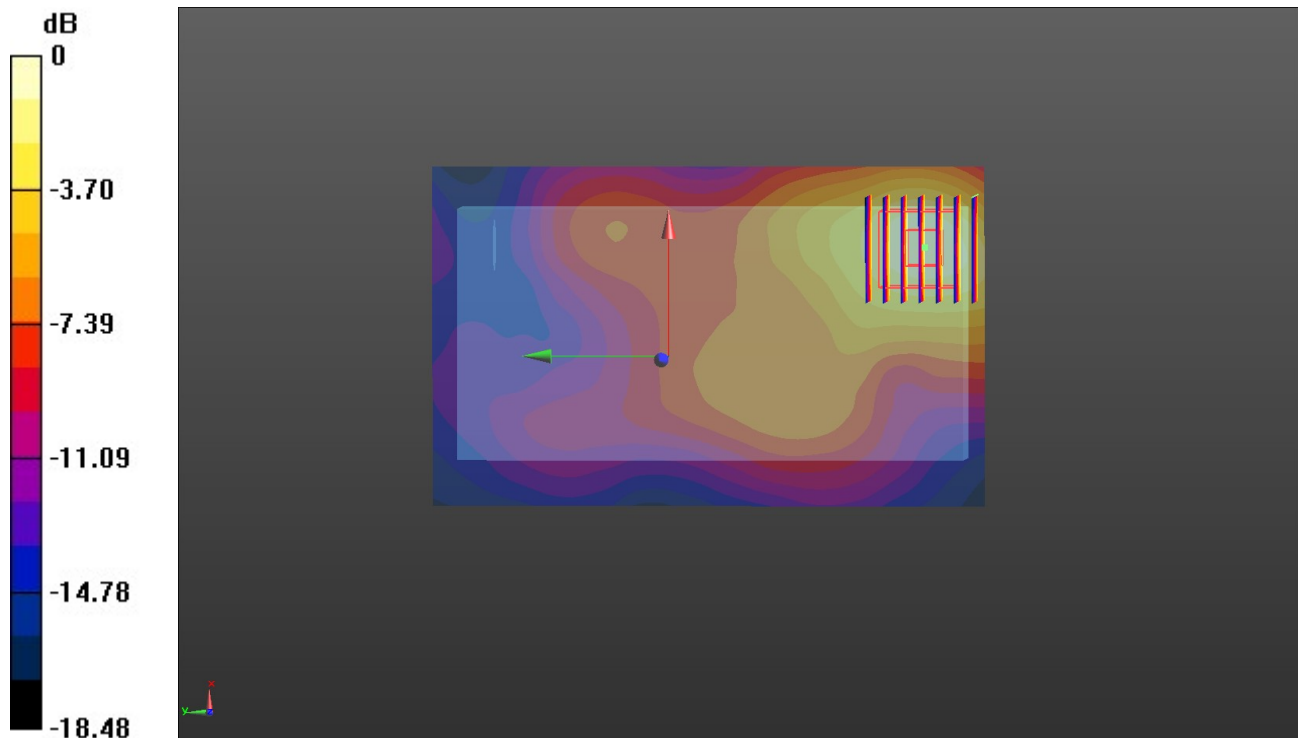
Front/CH 21100/Zoom Scan (7x7x7)/Cube 0: Measurement grid: dx=5mm, dy=5mm, dz=5mm

Reference Value = 7.724 V/m; Power Drift = 0.13 dB

Peak SAR (extrapolated) = 0.848 W/kg

SAR(1 g) = 0.435 W/kg; SAR(10 g) = 0.235 W/kg

Maximum value of SAR (measured) = 0.680 W/kg



0 dB = 0.680 W/kg = -1.67 dBW/kg

Test Laboratory: Huatongwei International Inspection Co., Ltd.,SAR Lab

Date: 1/23/2019

LTE Band 38-Head

Communication System: UID 0, Generic LTE-TDD (0); Frequency: 2595 MHz;Duty Cycle: 1:1.59

Medium parameters used: $f = 2595$ MHz; $\sigma = 1.966$ S/m; $\epsilon_r = 40.636$; $\rho = 1000$ kg/m³

Phantom section: Right Section

Ambient Temperature:22.9°C;Liquid Temperature:22.5°C;

DASY Configuration:

- Probe: EX3DV4 - SN7494; ConvF(7.92, 7.92, 7.92) @ 2595 MHz; Calibrated: 2/26/2018
- Sensor-Surface: 1.4mm (Mechanical Surface Detection)
- Electronics: DAE4 Sn1549; Calibrated: 4/25/2018
- Phantom: Twin-SAM V8.0 ; Type: QD 000 P41 AA; Serial: 1974
- DASY52 52.10.2(1495); SEMCAD X 14.6.12(7450)

Right Cheek Touch/CH 38000/Area Scan (71x131x1): Interpolated grid: dx=1.200 mm, dy=1.200 mm

Maximum value of SAR (interpolated) = 0.260 W/kg

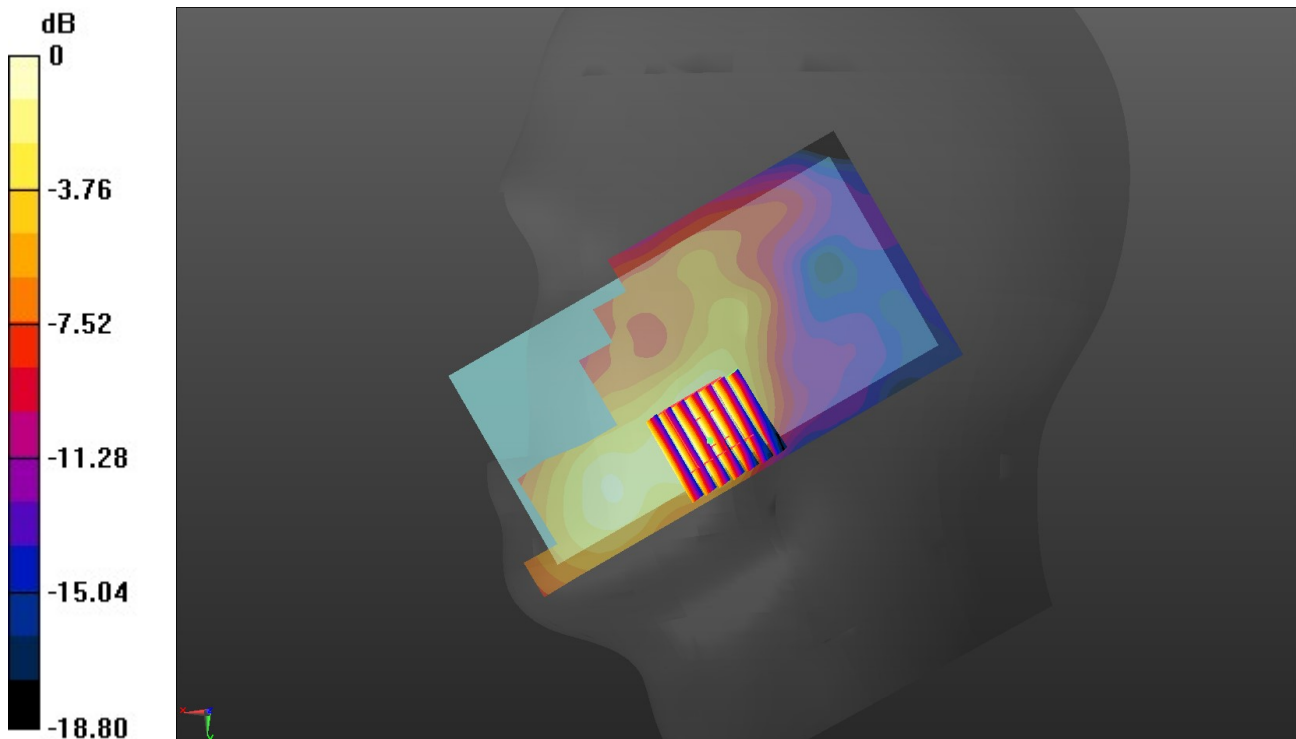
Right Cheek Touch/CH 38000/Zoom Scan (7x7x7)/Cube 0: Measurement grid: dx=5mm, dy=5mm, dz=5mm

Reference Value = 1.603 V/m; Power Drift = 0.14 dB

Peak SAR (extrapolated) = 0.304 W/kg

SAR(1 g) = 0.171 W/kg; SAR(10 g) = 0.093 W/kg

Maximum value of SAR (measured) = 0.253 W/kg



0 dB = 0.253 W/kg = -5.97 dBW/kg

Test Laboratory: Huatongwei International Inspection Co., Ltd.,SAR Lab

Date: 1/24/2019

LTE Band 38-Body

Communication System: UID 0, Generic LTE-TDD (0); Frequency: 2595 MHz;Duty Cycle: 1:1.59

Medium parameters used: $f = 2595$ MHz; $\sigma = 2.145$ S/m; $\epsilon_r = 52.786$; $\rho = 1000$ kg/m³

Phantom section: Flat Section

Ambient Temperature:22.8°C;Liquid Temperature:22.6°C;

DASY Configuration:

- Probe: EX3DV4 - SN7494; ConvF(7.51, 7.51, 7.51) @ 2595 MHz; Calibrated: 2/26/2018
- Sensor-Surface: 1.4mm (Mechanical Surface Detection)
- Electronics: DAE4 Sn1549; Calibrated: 4/25/2018
- Phantom: ELI V8.0 ; Type: QD OVA 004 AA ; Serial: 2078
- DASY52 52.10.2(1495); SEMCAD X 14.6.12(7450)

Front/CH 38000/Area Scan (81x131x1): Interpolated grid: dx=1.200 mm, dy=1.200 mm
Maximum value of SAR (interpolated) = 0.365 W/kg

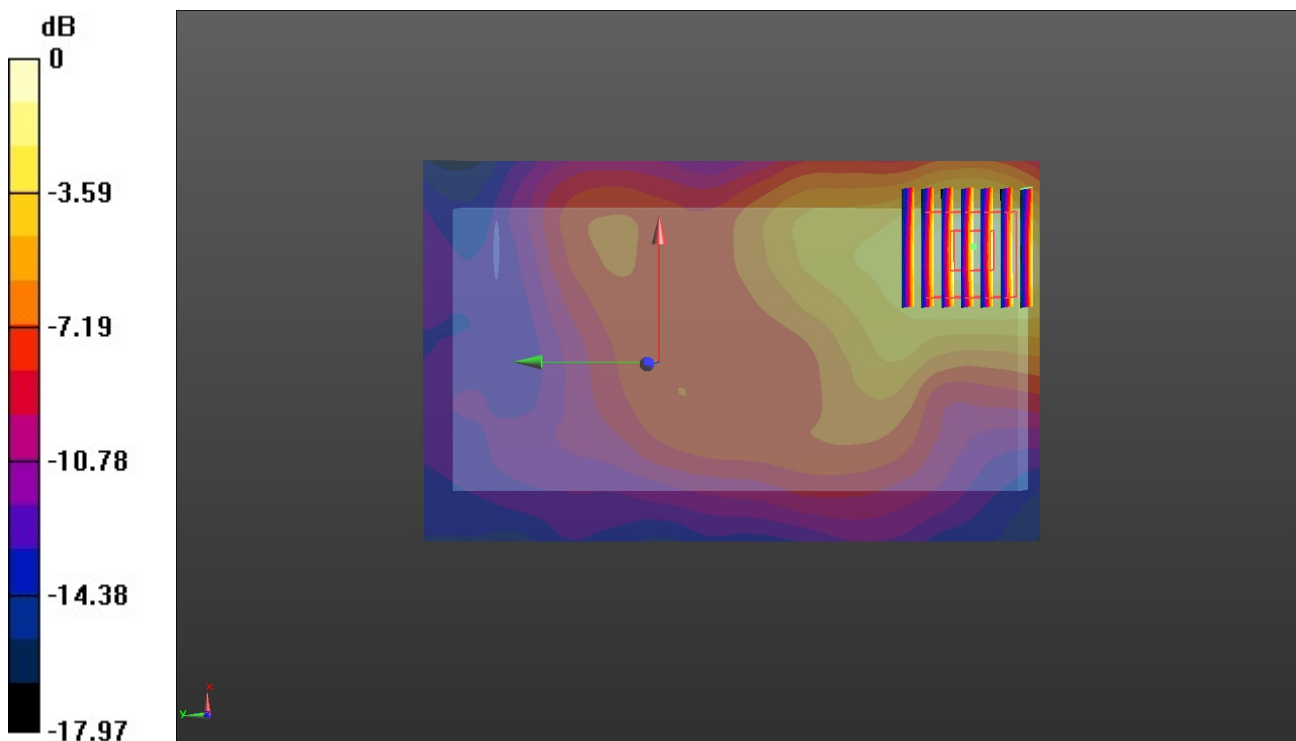
Front/CH 38000/Zoom Scan (7x7x7)/Cube 0: Measurement grid: dx=5mm, dy=5mm, dz=5mm

Reference Value = 5.155 V/m; Power Drift = 0.07 dB

Peak SAR (extrapolated) = 0.465 W/kg

SAR(1 g) = 0.237 W/kg; SAR(10 g) = 0.125 W/kg

Maximum value of SAR (measured) = 0.372 W/kg



0 dB = 0.372 W/kg = -4.29 dBW/kg

Test Laboratory: Huatongwei International Inspection Co., Ltd.,SAR Lab

Date: 12/28/2018

WIFI 2.4G-Head

Communication System: UID 0, Generic WIFI (0); Frequency: 2437 MHz;Duty Cycle: 1:1

Medium parameters used (interpolated): $f = 2437$ MHz; $\sigma = 1.829$ S/m; $\epsilon_r = 41.002$; $\rho = 1000$ kg/m³

Phantom section: Right Section

Ambient Temperature:22.6°C;Liquid Temperature:22.3°C;

DASY Configuration:

- Probe: EX3DV4 - SN7494; ConvF(8.27, 8.27, 8.27) @ 2437 MHz; Calibrated: 2/26/2018
- Sensor-Surface: 1.4mm (Mechanical Surface Detection)
- Electronics: DAE4 Sn1549; Calibrated: 4/25/2018
- Phantom: Twin-SAM V8.0 ; Type: QD 000 P41 AA; Serial: 1974
- DASY52 52.10.2(1495); SEMCAD X 14.6.12(7450)

Right Cheek Touch/CH 6/Area Scan (71x141x1): Interpolated grid: dx=1.200 mm, dy=1.200 mm

Maximum value of SAR (interpolated) = 0.386 W/kg

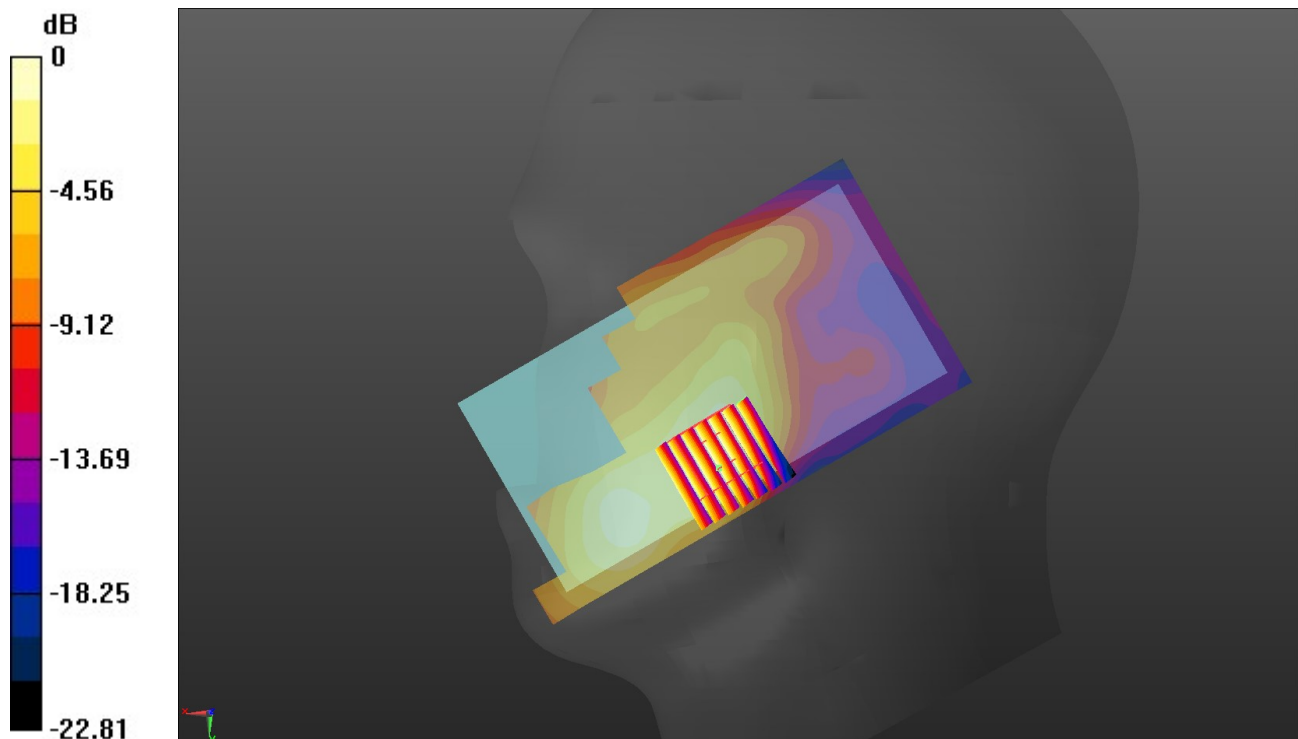
Right Cheek Touch/CH 6/Zoom Scan (7x7x7)/Cube 0: Measurement grid: dx=5mm, dy=5mm, dz=5mm

Reference Value = 2.566 V/m; Power Drift = -0.14 dB

Peak SAR (extrapolated) = 0.454 W/kg

SAR(1 g) = 0.258 W/kg; SAR(10 g) = 0.140 W/kg

Maximum value of SAR (measured) = 0.374 W/kg



0 dB = 0.374 W/kg = -4.27 dBW/kg

Test Laboratory: Huatongwei International Inspection Co., Ltd.,SAR Lab

Date: 12/28/2018

WIFI 2.4G-Body

Communication System: UID 0, Generic WIFI (0); Frequency: 2437 MHz;Duty Cycle: 1:1

Medium parameters used (interpolated): $f = 2437$ MHz; $\sigma = 1.991$ S/m; $\epsilon_r = 53.023$; $\rho = 1000$ kg/m³

Phantom section: Flat Section

Ambient Temperature:22.9°C;Liquid Temperature:22.6°C;

DASY Configuration:

- Probe: EX3DV4 - SN7494; ConvF(8.08, 8.08, 8.08) @ 2437 MHz; Calibrated: 2/26/2018
- Sensor-Surface: 1.4mm (Mechanical Surface Detection)
- Electronics: DAE4 Sn1549; Calibrated: 4/25/2018
- Phantom: ELI V8.0 ; Type: QD OVA 004 AA ; Serial: 2078
- DASY52 52.10.2(1495); SEMCAD X 14.6.12(7450)

Front/CH 6/Area Scan (71x141x1): Interpolated grid: dx=1.200 mm, dy=1.200 mm

Maximum value of SAR (interpolated) = 0.203 W/kg

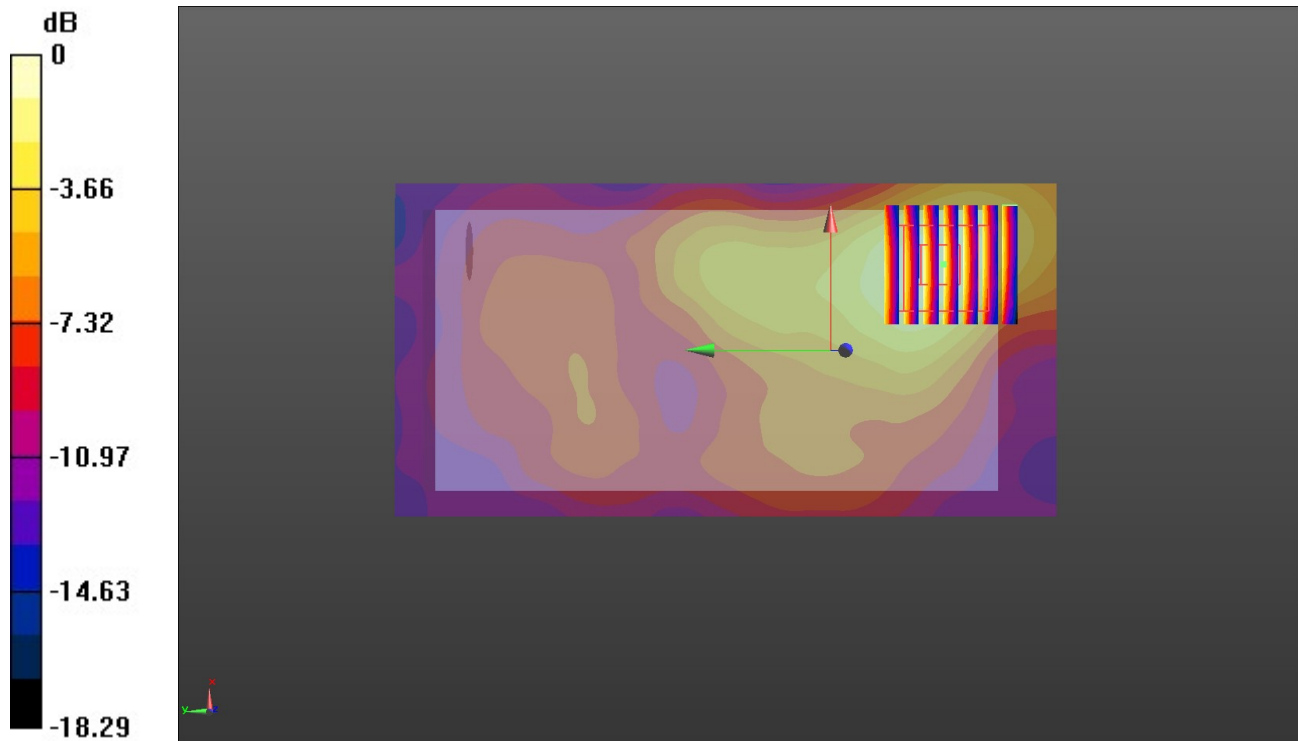
Front/CH 6/Zoom Scan (7x7x7)/Cube 0: Measurement grid: dx=5mm, dy=5mm, dz=5mm

Reference Value = 4.807 V/m; Power Drift = -0.16 dB

Peak SAR (extrapolated) = 0.249 W/kg

SAR(1 g) = 0.127 W/kg; SAR(10 g) = 0.068 W/kg

Maximum value of SAR (measured) = 0.199 W/kg



0 dB = 0.199 W/kg = -7.01 dBW/kg