



HYUNDAI CALIBRATION & CERTIFICATION TECH. CO., LTD.

PRODUCT COMPLIANCE DIVISION
SAN 136-1, AMI-RI, BUBAL-EUP, ICHEON-SI, KYOUNGKI-DO, 467-701, KOREA
TEL : +82 31 639 8518 FAX : +82 31 639 8525 www.hct.co.kr



CERTIFICATE OF COMPLIANCE SAR EVALUATION

PANTECH&CURITEL COMMUNICATIONS, INC.

110-1, ONGJEONG-RI, TONGJIN-EUP, GIMPO-SI,
GYOUNGGI-DO, 415-865, KOREA

FRN: 0006278469

Date of Issue: June 23, 2006

Test Report No.: HCT-SAR06-0609

Test Site: HYUNDAI CALIBRATION & CERTIFICATION
TECHNOLOGIES CO., LTD.

FRN: 0005866421

^E
FCC ID :

PP4PC-7300L

APPLICANT :

PANTECH&CURITEL COMMUNICATIONS, INC.

Type:	Single Band CDMA Phone -Prototype
Tx Frequency:	824.70 — 848.31 MHz (CDMA)
Rx Frequency:	869.70 — 893.31 MHz (CDMA)
Max. RF Output Power:	0.258W ERP CDMA (24.1dBm)
Max. RF Output Power: (Conducted)	0.317W CDMA (25.0dBm)
Trade Name/Model(s):	PANTECH&CURITEL / PC-7300L
FCC Classification:	Licensed Portable Transmitter Held to Ear (PCE)
Application Type:	Certification
FCC Rule Part(s):	§2.1093; FCC/ OET Bulletin Supplement C [July 2001]
Maximum SAR:	0.796W/kg CDMA Head SAR /0.723 W/kg CDMA Body SAR

This wireless portable device has been shown to be capable of compliance for localized specific absorption rate (SAR) for uncontrolled environment/general population exposure limits specified in ANSI/ IEEE Std. C95.1- 1992 and had been tested in accordance with the measurement procedures specified in ANSI/ IEEE Std. C95.3- 1992. (See Test Report).

I attest to the accuracy of data. All measurements reported herein were performed by me or were made under my supervision and are correct to the best of my knowledge and belief. I assume full responsibility for the completeness of these measurements and vouch for the qualifications of all persons taking them.

Hyundai C-Tech Co., Ltd. Certifies that no party to this application has been denied FCC benefits pursuant to section 5301 of the Anti- Drug Abuse Act of 1998, 21 U.S. C. 853(a)

Report prepared by : Ki-Soo Kim

Manager of Product Compliance Team



This report only responds to the tested sample and may not be reproduced, except in full, without written approval of the HCT Co., Ltd.

Table of Contents

1.1 SCOPE -----	3
2.1 INTRODUCTION / SAR DEFINITION -----	4
3.1 SAR MEASUREMENT SET-UP -----	5
4.1 E-FIELD PROBE SYSTEM -----	6
5.1 EUT ARRANGEMENT -----	7-8
6.1 E-FIELD PROBE CALIBRATION PROCESS -----	9-10
7.1 PHANTOM, HOLDER, & EQUIVALENT TISSUE -----	11
8.1 SYSTEM SPECIFICATIONS -----	12
9.1 MEASUREMENT PROCESS -----	13
10.1 ANSI/ IEEE C95.1 - 1992 RF EXPOSURE LIMITS -----	14
11.1 MEASUREMENT UNCERTAINTIES -----	15
12.1 3G MEASUREMENT PROCEDURES -----	16-17
13.1 TEST DATA SUMMARY -----	18-20
14.1 SAR TEST EQUIPMENT LIST -----	21
15.1 CONCLUSION -----	22
16.1 REFERENCES -----	23

SAR MEASUREMENT REPORT

1.1 SCOPE

Environmental evaluation measurements of specific absorption rate ¹ (SAR) distributions in emulated human head and body tissues exposed to radio frequency (RF) radiation from wireless portable devices for compliance with the rules and regulations of the U.S. Federal Communications Commission (FCC).²

1.2 Applicant

Company Name:	PANTECH&CURITEL COMMUNICATION, INC.
Address:	110-1, ONGJEONG-RI, TONGJIN-EUP, GIMPO-SI, GYOUNGGI-DO, 415-865, KOREA
Attention:	Ki Yeoul, LEE
Tel. / Fax :	+82-31-999-8801 / +82-31-984-9771
E-Mail :	leekiyeoul@pantech.com

- EUT Type: Single Band CDMA Phone - Prototype
- Trade Name: PANTECH&CURITEL
- Model(s): PC-7300L
- FCC ID: PP4PC-7300L
- Serial Number(s): PP47300L-20060601
- Tx Frequency: 824.70 – 848.31 MHz (CDMA)
- Rx Frequency: 869.70 – 893.31 MHz (CDMA)
- Application Type: Certification
- FCC Classification: Licensed Portable Transmitter Held to Ear (PCE)
- FCC Rule Part(s): §2.1093; FCC/ OET Bulletin Supplement C [July 2001]
- Modulation(s): CDMA
- Antenna Type: Intenna
- Max. RF Output Power: 0.258W ERP CDMA (24.1dBm)
- Date(s) of Tests: June 22, 2006
- Place of Tests: Hyundai C-Tech. EMC Lab.
Icheon, Kyounki-Do, KOREA
- Report Serial No.: HCT-SAR06-0609

¹ Specific Absorption Rate (SAR) is a measure of the rate of energy absorption due to exposure to an RF transmitting source (wireless portable device).

² IEEE/ANSI Std. C95.1-1992 limits are used to determine compliance with FCC ET Docket 93-62.

2.1 INTRODUCTION

The FCC has adopted the guidelines for evaluating the environmental effects of radio frequency radiation in ET Docket 93-62 on Aug. 6, 1996 to protect the public and workers from the potential hazards of RF emissions due to FCC-regulated portable devices. [1]

The safety limits used for the environmental evaluation measurements are based on the criteria published by the American National Standards Institute (ANSI) for localized specific absorption rate (SAR) in IEEE/ANSI C95.1-1992 Standard for Safety Levels with Respect to Human Exposure to Radio Frequency Electromagnetic Fields, 3 kHz to 300 GHz. (c) 1992 by the Institute of Electrical and Electronics Engineers, Inc., New York, New York 10017.[2] The measurement procedure described in IEEE/ANSI C95.3-1992 Recommended Practice for the Measurement of Potentially Hazardous Electromagnetic Fields - RF and Microwave[3] is used for guidance in measuring SAR due to the RF radiation exposure from the Equipment Under Test (EUT). These criteria for SAR evaluation are similar to those recommended by the National Council on Radiation Protection and Measurements (NCRP) in Biological Effects and Exposure Criteria for Radio frequency Electromagnetic Fields," NCRP Report No. 86 (c) NCRP, 1986, Bethesda, MD 20814.[4] SAR is a measure of the rate of energy absorption due to exposure to an RF transmitting source. SAR values have been related to threshold levels for potential biological hazards.

2.2 SAR Definition

Specific Absorption Rate (SAR) is defined as the time derivative (rate) of the incremental energy (dU) absorbed by (dissipated in) an incremental mass (dm) contained in a volume element (dV) of a given density (ρ). It is also defined as the rate of RF energy absorption per unit mass at a point in an absorbing body.

$$SAR = \frac{d}{dt} \left(\frac{dU}{dm} \right) = \frac{d}{dt} \left(\frac{dU}{\rho dV} \right)$$

Figure 2. SAR Mathematical Equation

SAR is expressed in units of Watts per Kilogram (W/kg).

$$SAR = \sigma E^2 / \rho$$

where:

σ	=	conductivity of the tissue-simulant material (S/m)
ρ	=	mass density of the tissue-simulant material (kg/m ³)
E	=	Total RMS electric field strength (V/m)

NOTE: The primary factors that control rate of energy absorption were found to be the wavelength of the incident field in relations to the dimensions and geometry of the irradiated organism, the orientation of the organism in relation to the polarity of field vectors, the presence of reflecting surfaces, and whether conductive contact is made by the organism with a ground plane.[4]

3.1 SAR MEASUREMENT SET-UP

These measurements are performed using the DASY4 automated dosimetric assessment system. It is made by Schmid & Partner Engineering AG (SPEAG) in Zurich, Switzerland. It consists of high precision robotics system (Staubli), robot controller, Pentium III computer, near-field probe, probe alignment sensor, and the generic twin phantom containing the brain equivalent material. The robot is a six-axis industrial robot performing precise movements to position the probe to the location (points) of maximum electromagnetic field (EMF) (see Fig.3).

A cell controller system contains the power supply, robot controller, teach pendant (Joystick), and remote control, is used to drive the robot motors. The PC consists of the Dell Pentium III 450 MHz computer with Windows NT 4.0 system and SAR Measurement Software DASY4, A/D interface card, monitor, mouse, and keyboard. The Staubli Robot is connected to the cell controller to allow software manipulation of the robot. A data acquisition electronic (DAE) circuit performs the signal amplification, signal multiplexing, AD-conversion, offset measurements, mechanical surface detection, collision detection, etc. is connected to the Electro-optical coupler (EOC). The EOC performs the conversion from the optical into digital electric signal of the DAE and transfers data to the PC plug-in card.



Figure 3. HCT SAR Lab. Test Measurement Set-up

The DAE3 consists of a highly sensitive electrometer-grade preamplifier with auto-zeroing, a channel and gain-switching multiplexer, a fast 16 bit AD-converter and a command decoder and control logic unit. Transmission to the PC-card is accomplished through an optical downlink for data and status information and an optical uplink for commands and clock lines. The mechanical probe mounting device includes two different sensor systems for frontal and sidewise probe contacts. They are also used for mechanical surface detection and probe collision detection. The robot uses its own controller with a built in VME-bus computer. The system is described in detail in [5].

4.1 DASY4 E-FIELD PROBE SYSTEM

4.2 ET3DV6 Probe Specification

Construction	Symmetrical design with triangular core Built-in optical fiber for surface detection System Built-in shielding against static charges
Calibration	In air from 10 MHz to 2.5 GHz In brain and muscle simulating tissue at Frequencies of 450 MHz, 900 MHz and 1.8 GHz (accuracy $\pm 8\%$)
Frequency	10 MHz to > 6 GHz; Linearity: ± 0.2 dB (30 MHz to 3 GHz)
Directivity	± 0.2 dB in brain tissue (rotation around probe axis) ± 0.4 dB in brain tissue (rotation normal probe axis)
Dynamic	5 uW/g to > 100 mW/g;
Range Linearity:	± 0.2 dB
Surface Detection	± 0.2 mm repeatability in air and clear liquids over diffuse reflecting surfaces.
Dimensions	Overall length: 330 mm Tip length: 16 mm Body diameter: 12 mm Tip diameter: 6.8 mm Distance from probe tip to dipole centers: 2.7 mm
Application	General dissymmetry up to 3 GHz Compliance tests of mobile phones Fast automatic scanning in arbitrary phantoms



Figure 4. Photograph of the probe and the Phantom



Figure 5. ET3DV6 E-field Probe

The SAR measurements were conducted with the dosimetric probe ET3DV6, designed in the classical triangular configuration [5] and optimized for dosimetric evaluation. The probe is constructed using the thick film technique; with printed resistive lines on ceramic substrates. The probe is equipped with an optical multifiber line ending at the front of the probe tip. It is connected to the EOC box on the robot arm and provides an automatic detection of the phantom surface. Half of the fibers are connected to a pulsed infrared transmitter, the other half to a synchronized receiver. As the probe approaches the surface, the reflection from the surface produces a coupling from the transmitting to the receiving fibers. This reflection increases first during the approach, reaches a maximum and then decreases. If the probe is flatly touching the surface, the coupling is zero. The distance of the coupling maximum to the surface is independent of the surface reflectivity and largely independent of the surface to probe angle. The DASY4 software reads the reflection during a software approach and looks for the maximum using a 2nd order fitting. The approach is stopped at reaching the maximum.

5.1 EUT ARRANGEMENT

5.2 HEAD POSITION

The device was placed in a normal operating position with the Point A on the device, as illustrated in following drawing, aligned with the location of the RE(ERP) on the phantom. With the ear-piece pressed against the head, the vertical center line of the body of the handset was aligned with an imaginary plane consisting of the RE, LE and M. While maintaining these alignments, the body of the handset was gradually moved towards the cheek until any point on the mouth-piece or keypad contacted the cheek. This is a cheek/touch position. For ear/tilt position, while maintain the device aligned with the BM and FN lines, the device was pivot against ERP back for 15° or until the device antenna touch the phantom. Please refer to IEEE SC-2 P1528 illustration Below.

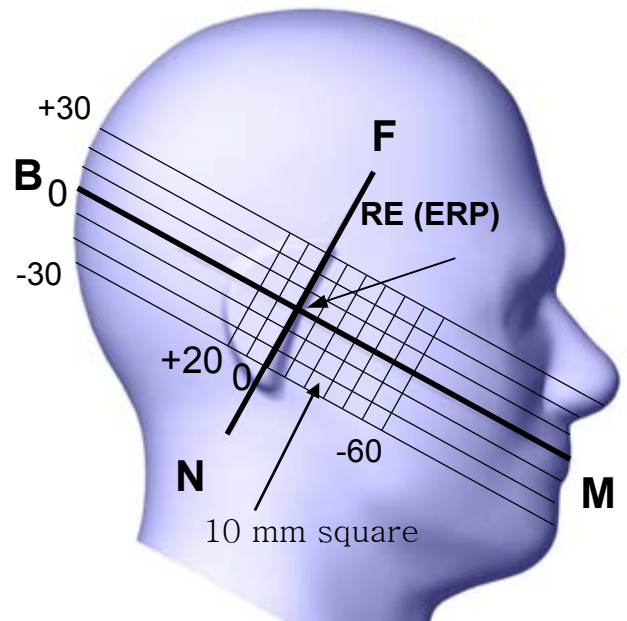


Figure 6. EUT Head Position

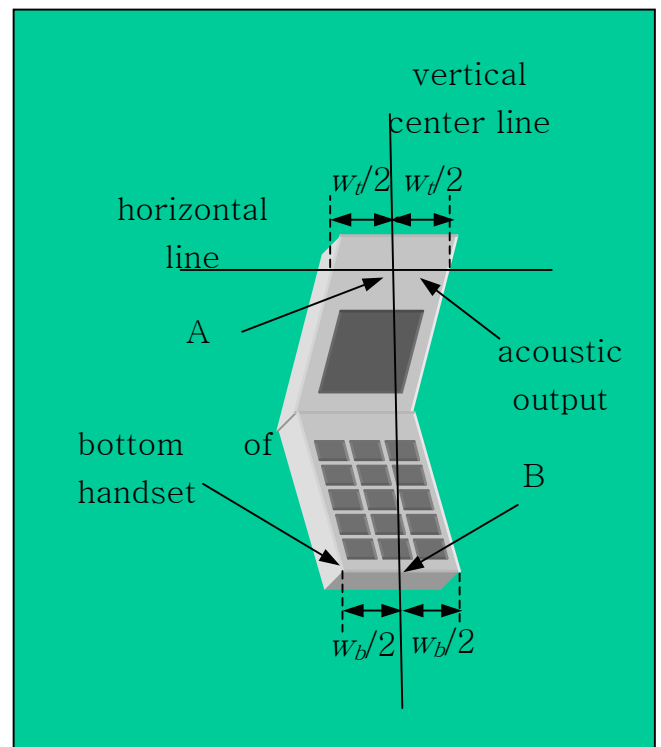
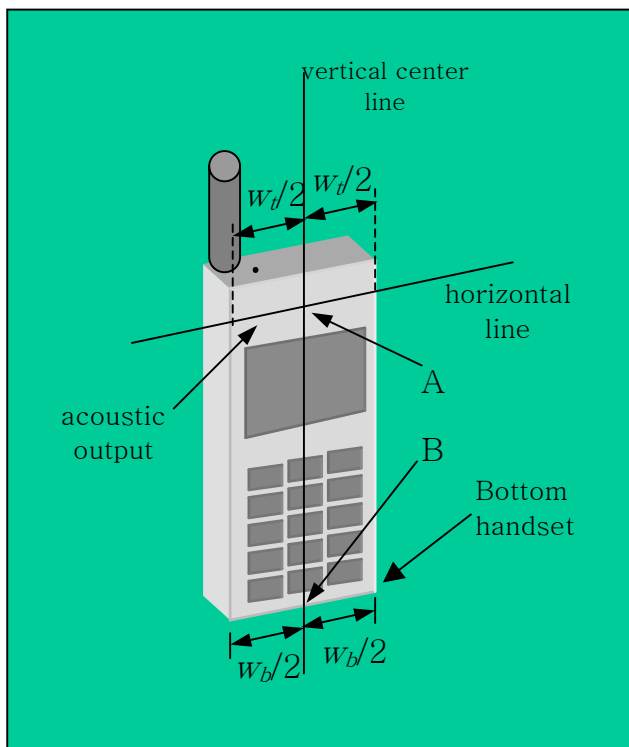
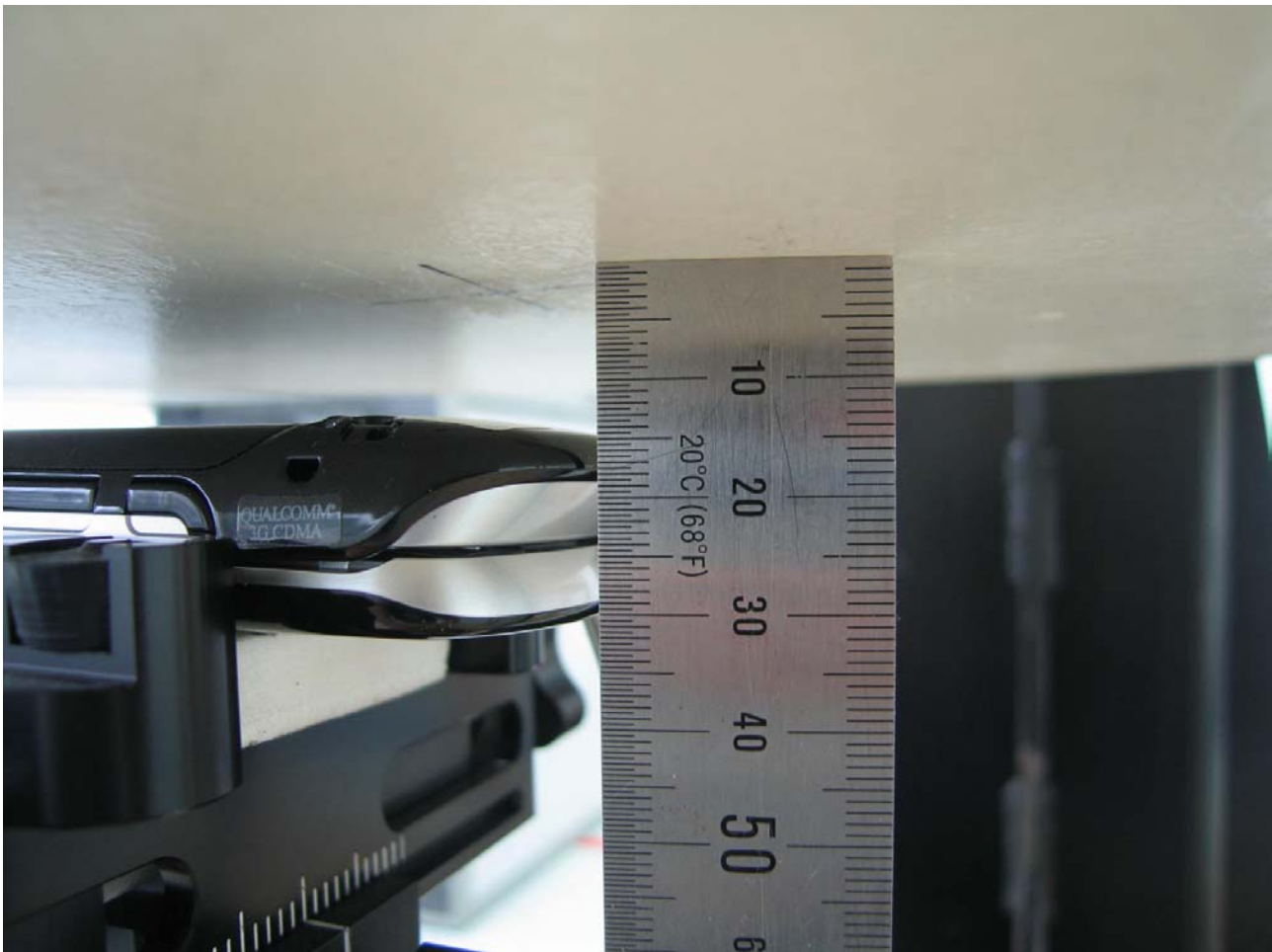


Figure 7. Device Test Position

5.3 BODY-WORN TEST SETUP

The body worn configuration is used for body-worn devices that have belt clip, holster or carrying case accessory. Typically, a holster, belt clip or carrying case is provided or available as an accessory item for supporting headset and body-worn operations. SAR may vary depending on the body separation distance provided by the type of accessory and batteries supplied for a phone. Generally, the design of the holster allows the phone to be positioned only with the keypad facing away from the phantom. Proper usage of the body worn accessory restricts the antenna to a specified distance away from the surface of the body. For this test the EUT is

- Placed into the Body worn accessory and the accessory is positioned against the surface of the phantom in a normal operating position. (2mm separation phantom thickness)
- Since this EUT does not supply any body worn accessory to the end user a distance of 15 mm from the EUT back surface to the liquid interface is configured for the generic test.



[Body Without Holster Configuration]

Figure 8. Body Test Position

6.1 E-FIELD PROBE CALIBRATION PROCESS

6.2 E-Probe Calibration

Each probe is calibrated according to a dosimetric assessment procedure described in [6] with an accuracy better than +/- 10%. The spherical isotropy was evaluated with the procedure described in [7] and found to be better than +/-0.25dB. The sensitivity parameters (NormX, NormY, NormZ), the diode compression parameter (DCP) and the conversion factor (ConvF) of the probe is tested.

The free space E-field from amplified probe outputs is determined in a test chamber. This is performed in a TEM cell for frequencies below 1 GHz, and in a waveguide above 1 GHz for free space. For the free space calibration, the probe is placed in the volumetric center of the cavity and at the proper orientation with the field. The probe is then rotated 360 degrees.

E-field temperature correlation calibration is performed in a flat phantom filled with the appropriate simulated brain tissue. The measured free space E-field in the medium correlates to temperature rise in a dielectric medium. For temperature correlation calibration a RF transparent thermistor-based temperature probe is used in conjunction with the E-field probe.

$$SAR = C \frac{\Delta T}{\Delta t}$$

where:

Δt = exposure time (30 seconds),

C = heat capacity of tissue (brain or muscle),

ΔT = temperature increase due to RF exposure.

SAR is proportional to $\Delta T / \Delta t$, the initial rate of tissue heating, before thermal diffusion takes place. Now it's possible to quantify the electric field in the simulated tissue by equating the thermally derived SAR to the E- field;

$$SAR = \frac{|E|^2 \cdot \sigma}{\rho}$$

where:

σ = simulated tissue conductivity,

ρ = Tissue density (1.25 g/cm³ for brain tissue)



Figure 9. E-Field and Temperature measurements at 900MHz[5]

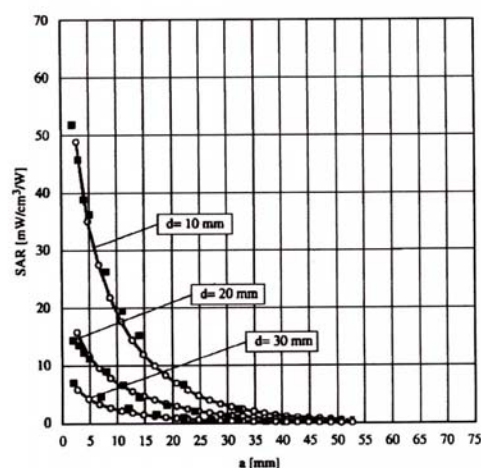


Figure 10. E-Field and temperature measurements at 1.8GHz [5]

6.3 Data Extrapolation

The DASY4 software automatically executes the following procedures to calculate the field units from the microvolt readings at the probe connector. The first step of the evaluation is a linearization of the filtered input signal to account for the compression characteristics of the detector diode. The compensation depends on the input signal, the diode type and the DC-transmission factor from the diode to the evaluation electronics. If the exciting field is pulsed, the crest factor of the signal must be known to correctly compensate for peak power. The formula for each channel can be given as [8]:

$$V_i = U_i + U_i^2 \cdot \frac{cf}{dcp_i}$$

with V_i = compensated signal of channel i (i=x,y,z)
 U_i = input signal of channel i (i=x,y,z)
 cf = crest factor of exciting field (DASY parameter)
 dcp_i = diode compression point (DASY parameter)

From the compensated input signals the primary field data for each channel can be evaluated:

E-field probes:

$$E_i = \sqrt{\frac{V_i}{Norm_i \cdot ConvF}}$$

with V_i = compensated signal of channel i (i = x,y,z)
 $Norm_i$ = sensor sensitivity of channel i (i = x,y,z)
 $\mu V/(V/m)^2$ for E-field probes
 $ConvF$ = sensitivity of enhancement in solution
 E_i = electric field strength of channel i in V/m

The RSS value of the field components gives the total field strength (Hermetian magnitude):

$$E_{tot} = \sqrt{E_x^2 + E_y^2 + E_z^2}$$

The primary field data are used to calculate the derived field units.

$$SAR = E_{tot}^2 \cdot \frac{\sigma}{\rho \cdot 1000}$$

with SAR = local specific absorption rate in W/g
 E_{tot} = total field strength in V/m
 σ = conductivity in [mho/m] or [Siemens/m]
 ρ = equivalent tissue density in g/cm³

The power flow density is calculated assuming the excitation field to be a free space field.

$$P_{pwe} = \frac{E_{tot}^2}{3770}$$

with P_{pwe} = equivalent power density of a plane wave in W/cm²
 E_{tot} = total electric field strength in V/m

7.1 PHANTOM & EQUIVALENT TISSUES

7.2 SAM Phantom

The SAM Phantom is constructed of a fiberglass shell integrated in a wooden table. The shape of the shell is based on data from an anatomical study designed to determine the maximum exposure in at least 90% of all users [9][10]. It enables the dosimetric evaluation of left and right hand phone usage as well as body mounted usage at the flat phantom region. A cover prevents the evaporation of the liquid. Reference markings on the Phantom allow the complete setup of all predefined phantom positions and measurement grids by manually teaching three points in the robot.

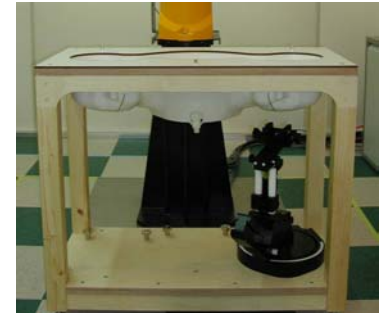


Figure 11. SAM Phantom

Shell Thickness	2.0 mm
Filling Volume	Volume Approx. 30 liters
Dimensions	810 x 1000 x 500 mm (H x L x W)

7.3 Brain & Muscle Simulating Mixture Characterization

The brain and muscle mixtures consist of a viscous gel using hydrox-ethyl cellulose (HEC) gelling agent and saline solution (see Table 1). Preservation with a bactericide is added and visual inspection is made to make sure air bubbles are not trapped during the mixing process. The mixture is calibrated to obtain proper dielectric constant (permittivity) and conductivity of the desired tissue. The mixture characterizations used for the brain and muscle tissue simulating liquids are according to the data by C. Gabriel and G. Hartsgrrove [11].

Mixture (%)	835 MHz		1900 MHz	
	Head	Body	Head	Body
Water	41.45	52.4	54.90	69.91
Glycol	-	-	44.92	29.96
Sugar	56.0	45.0	-	-
Salt (NaCl)	1.45	1.40	0.18	0.13
Bactericide	0.1	0.1	-	-
HEC	1.0	1.0	-	-

Table 1. Composition of the Tissue Equivalent Matter

7.4 Device Holder for Transmitters

In combination with the SAM Phantom V4.0, the Mounting Device (POM) enables the rotation of the mounted transmitter in spherical coordinates whereby the rotation points is the ear opening. The devices can be easily, accurately, and repeatably positioned according to the FCC and CENELEC specifications. The device holder can be locked at different phantom locations (left head, right head, flat phantom).

Note: A simulating human hand is not used due to the complex anatomical and geometrical structure of the hand that may produced infinite number of configurations [10]. To produce the Worst-case condition (the hand absorbs antenna output power), the hand is omitted during the tests.



Fig. 12. Device Holder

8.1 SYSTEM SPECIFICATIONS

8.2 Robotic System Specifications

Specifications

POSITIONER: Stäubli Unimation Corp. Robot Model: RX90LB
Repeatability: 0.02 mm
No. of axis: 6

Data Acquisition Electronic (DAE) System

Cell Controller
Processor: Pentium IV
Clock Speed: 3.0 GHz
Operating System: Windows XP
Data Card: DASY4 PC-Board
Data Converter
Features: Signal Amplifier, multiplexer, A/D converter, and control logic
Software: DASY4 software
Connecting Lines: Optical downlink for data and status info.
 Optical uplink for commands and clock

PC Interface Card

Function: 24 bit (64 MHz) DSP for real time processing
 Link to DAE3
 16 bit A/D converter for surface detection system
 serial link to robot
 direct emergency stop output for robot

E-Field Probes

Model: ET3DV6 S/N: 1798, S/N: 1609, S/N: 1607
Construction: Triangular core fiber optic detection system
Frequency: 10 MHz to 6 GHz
Linearity: ± 0.2 dB (30 MHz to 3 GHz)

Phantom

Phantom: SAM
Shell Material: Fiberglass
Thickness: 2.0 ± 0.1 mm

Tissue Parameters

Freq. [MHz]	Date	Liquid	Liquid Temp [°C]	Parameters	Target Value	Measured Value	Deviation [%]	Limit [%]
835 MHz	June 22, 2006	Head	22.2	ϵ_r	41.5	40.8	-1.69	$\pm 5\%$
				σ	0.90	0.875	-2.78	$\pm 5\%$
	June 22, 2006	Body	22.2	ϵ_r	55.2	54.8	-0.72	$\pm 5\%$
				σ	0.97	0.96	-1.03	$\pm 5\%$

9.1 MEASUREMENT PROCESS

9.2 System Verification

Prior to assessment, the system is verified to the $\pm 10\%$ of the specifications at 835MHz by using the system validation kit. (Graphic Plots Attached)

Freq. [MHz]	Liquid	Date	Liquid Temp [°C]	SAR Average	Target Value (mW/g)	Measured Value (mW/g)	Deviation [%]	Limit [%]
835 MHz S/N: 441	Head	June 22, 2006	22.2	1 g	9.5	9.53	+0.32	$\pm 10\%$

9.3 Dosimetric Assessment Setup

The evaluation was performed with the following procedure:

- The SAR value at a fixed location above the ear point was measured and was used as a reference value for assessing the power drop.
- The SAR distribution at the exposed side of the head was measured at a distance of 3.9mm from the inner surface of the shell. The area covered the entire dimension of the head and the horizontal grid spacing was 20mm x 20mm. Based on this data, the area of the maximum absorption was determined by spline interpolation.
- Around this point, a volume of 32mm x 32mm x 34mm was assessed by measuring 5 x 5 x 7 points. On this basis of this data set, the spatial peak SAR value was evaluated with the following procedure:
 - The data at the surface were extrapolated, since the center of the dipoles is 2.7mm away from the tip of the probe and the distance between the surface and the lowest measuring point is 1.2mm. The extrapolation was based on a least square algorithm [13]. A polynomial of the fourth order was calculated through the points in z-axes. This polynomial was then used to evaluate the points between the surface and the probe tip.
 - The maximum interpolated value was searched with a straight-forward algorithm. Around this maximum the SAR values averaged over the spatial volumes (1g or 10g) were computed using the 3D-Spline interpolation algorithm. The 3D-spline is composed of three one-dimensional splines with the "Not a knot" condition (in x,y, and z directions) [13][14]. The volume was integrated with the trapezoidal algorithm. One thousand points (10 x 10 x 10) were interpolated to calculate the average.
 - All neighboring volumes were evaluated until no neighboring volume with a higher average value was found.
- The SAR value, at the same location as procedure #1, was re-measured. If the value changed by more than 5%, the evaluation is repeated.

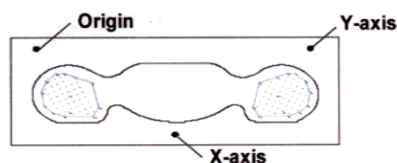


Fig. 13. SAR Measurement Point in Area Scan

10.1 ANSI/ IEEE C95.1 - 1992 RF EXPOSURE LIMITS

HUMAN EXPOSURE	UNCONTROLLED ENVIRONMENT General Population (W/kg) or (mW/g)	CONTROLLED ENVIRONMENT Occupational (W/kg) or (mW/g)
SPATIAL PEAK SAR * (Brain)	1.60	8.00
SPATIAL AVERAGE SAR ** (Whole Body)	0.08	0.40
SPATIAL PEAK SAR *** (Hands / Feet / Ankle / Wrist)	4.00	20.00

Table 2. Safety Limits for Partial Body Exposure

NOTES:

* The Spatial Peak value of the SAR averaged over any 1 gram of tissue (defined as a tissue volume in the shape of a cube) and over the appropriate averaging time.

** The Spatial Average value of the SAR averaged over the whole-body.

*** The Spatial Peak value of the SAR averaged over any 10 grams of tissue (defined as a tissue volume in the shape of a cube) and over the appropriate averaging time.

Uncontrolled Environments are defined as locations where there is the exposure of individuals who have no knowledge or control of their exposure.

Controlled Environments are defined as locations where there is exposure that may be incurred by persons who are aware of the potential for exposure, (i.e.as a result of employment or occupation).

11.1 MEASUREMENT UNCERTAINTIES

Measurement uncertainties in SAR measurements are difficult to quantify due to several variables including biological, physiological, and environmental. However, we estimate the measurement uncertainties in SAR to be less than 15-25 % [16].

According to ANSI/IEEE C95.3, the overall uncertainties are difficult to assess and will vary with the type of meter and usage situation. However, accuracy's of 1 to ± 3 dB can be expected in practice, with greater uncertainties in near-field situations and at higher frequencies (shorter wavelengths), or areas where large reflecting objects are present. Under optimum measurement conditions, SAR measurement uncertainties of at least ± 2 dB can be expected.[3]

According to CENELEC [17], typical worst-case uncertainty of field measurements is 5 dB. For well-defined modulation characteristics the uncertainty can be reduced to ± 3 dB.

Error Description	Uncertainty value (%)	Probability Distribution	Divisor	ci	ci ²	Standard Uncertainty (%)	Stand Uncert ²	(Stand Uncert ²) X (ci ²)	Vi & Veff
1. Measurement System									
Probe Calibration	11	Normal	2.00	1	1	5.50	30.25	30.25	∞
Axial Isotropy	4.7	Rectangular	1.73	0.7	0.49	2.71	7.36	3.61	∞
Hemispherical Isotropy	9.6	Rectangular	1.73	0.7	0.49	5.54	30.72	15.05	∞
Linearity	4.7	Rectangular	1.73	1	1	2.71	7.36	7.36	∞
System Detection limits	1.0	Rectangular	1.73	1	1	0.58	0.33	0.33	∞
Boundary effect	1.0	Rectangular	1.73	1	1	0.58	0.33	0.33	∞
Response time	0.8	Rectangular	1.73	1	1	0.46	0.21	0.21	∞
RF Ambient conditions	3.0	Rectangular	1.73	1	1	1.73	3.00	3.00	∞
Readout Electronics	0.3	Normal	1.00	1	1	0.30	0.09	0.09	∞
Integration time	2.6	Rectangular	1.73	1	1	1.50	2.25	2.25	∞
Probe positioner	0.4	Rectangular	1.73	1	1	0.23	0.05	0.05	∞
Probe positioning	2.9	Rectangular	1.73	1	1	1.67	2.80	2.80	∞
Maximum SAR evaluation	1.0	Rectangular	1.73	1	1	0.58	0.33	0.33	∞
Total							65.69		
2. Test Sample Related									
Device Positioning	1.77	Normal	1.00	1	1	1.77	3.13	3.13	9
Device Holder	3.6	Normal	1.00	1	1	3.60	12.96	12.96	∞
Power Drift	5.0	Rectangular	1.73	1	1	2.89	8.33	8.33	∞
Total							24.43		
3. Phantom and Setup									
Phantom Uncertainty	4.0	Rectangular	1.73	1	1	2.31	5.33	5.33	∞
Liquid conductivity (target)	5.0	Rectangular	1.73	0.5	0.25	2.89	8.33	2.08	∞
Liquid conductivity (measurement error)	2.5	Normal	1.00	0.5	0.25	2.50	6.25	1.56	∞
Liquid permittivity (target)	5.0	Rectangular	1.73	0.5	0.25	2.89	8.33	2.08	∞
Liquid permittivity (measurement error)	2.5	Normal	1.00	0.5	0.25	2.50	6.25	1.56	∞
Total							12.63		
Combined standard uncertainty	10.14					Total	102.74		
Expanded uncertainty =(confidence interval of 95.45 %)	20.3	± 20.3 % (Coverage Factor of <i>k</i> = 2)							

Table 3. Breakdown of Errors

12.1 3G MEASUREMENT PROCEDURES

12.2 Procedures Used To Establish Test Signal

The handset was placed into a simulated call using a base station simulator in a shielded chamber. Such test signals offer a consistent means for testing SAR and are recommended for evaluating SAR. SAR measurements were taken with a fully charged battery. In order to verify that the device was tested and maintained at full power, this was configured with the base station simulator. The SAR measurement software calculates a reference point at the start and end of the test to check for power drifts. If conducted power deviations of more than 5% occurred, the tests were repeated.

12.3 SAR Measurement Conditions for CDMA2000 1x

These procedures were followed according to FCC "SAR Measurement Procedures for 3G Devices", May 2006.

12.3.1 Output Power Verification

See 3GPP2 C.S0011/TIA-98-E as recommended by "SAR Measurement Procedures for 3G Devices", May 2006.

Maximum output power is verified on the High, Middle and Low channels according to procedures defined in section 4.4.5.2 of 3GPP2 C.S0011/TIA-98-E. SO55 tests were measured with power control bits in "All Up" condition.

1. If the mobile station supports Reverse TCH RC 1 and Forward TCH RC 1, set up a call using Fundamental Channel Test Mode 1 (RC=1/1) with 9600 bps data rate only.
2. Under RC1, C.S0011 Table 4.4.5.2-1 (Table 4) parameters were applied.
3. If the MS supports the RC 3 Reverse FCH, RC3 Reverse SCH0 and demodulation of RC 3, 4, or 5, set up a call using Supplemental Channel Test Mode 3 (RC 3/3) with 9600 bps Fundamental Channel and 9600 bps SCH0 data rate Channel and 9600 bps SCH0 data rate.
4. Under RC3, C.S0011 Table 4.4.5.2-2 (Table 5) was applied.
5. FCHs were configured at full rate for maximum SAR with "All Up" power control bits.

Parameters for Max. Power for RC1

Parameter	Units	Value
I_{or}	dBm/1.23 MHz	-104
$\frac{Pilot E_c}{I_{or}}$	dB	-7
$\frac{Traffic E_c}{I_{or}}$	dB	-7.4

Table. 4

Parameters for Max. Power for RC3

Parameter	Units	Value
I_{or}	dBm/1.23 MHz	-86
$\frac{Pilot E_c}{I_{or}}$	dB	-7
$\frac{Traffic E_c}{I_{or}}$	dB	-7.4

Table. 5

12.3.2 Head SAR Measurement

SAR for head exposure configurations is measured in RC3 with the DUT configured to transmit at full rate using Loopback Service Option SO55. SAR for RC1 is not required when the maximum average output of each channel is less than ¼ dB higher than that measured in RC3. Otherwise, SAR is measured on the maximum output channel in RC1 using the exposure configuration that results in the highest SAR for that channel in RC3.

12. 3. 3 Body SAR Measurement

SAR for body exposure configurations is measured in RC3 with the DUT configured to transmit at full rate on FCH with all other code channels disabled using TDSO / SO32. SAR for multiple code channels (FCH + SCHn) is not required when the maximum average output of each RF channel is less than ¼ dB higher than that measured with FCH only. Otherwise, SAR is measured on the maximum output channel (FCH + SCHn) with FCH at full rate and SCH0 enabled at 9600 bps using the exposure configuration that results in the highest SAR for that channel with FCH only. When multiple code channels are enabled, the DUT output may shift by more than 0.5 dB and lead to higher SAR drifts and SCH dropouts.

Body SAR in RC1 is not required when the maximum average output of each channel is less than ¼ dB higher than that measured in RC3. Otherwise, SAR is measured on the maximum output channel in RC1; with Loopback Service Option SO55, at full rate, using the body exposure configuration that results in the highest SAR for that channel in RC3.

12. 3. 4 Handsets with EV-DO

For handsets with Ev-Do capabilities, when the maximum average output of each channel in Rev. 0 is less than ¼ dB higher than that measured in RC3 (1x RTT), body SAR for Ev-Do is not required. Otherwise, SAR for Rev. 0 is measured on the maximum output channel at 153.6 kbps using the body exposure configuration that results in the highest SAR for that channel in RC3. SAR for Rev. A is not required when the maximum average output of each channel is less than that measured in Rev. 0 or less than ¼ dB higher than that measured in RC3. Otherwise, SAR is measured on the maximum output channel for Rev. A using a Reverse Data Channel payload size of 4096 bits and a Termination Target of 16 slots defined for Subtype 2 Physical Layer configurations. A Forward Traffic Channel data rate corresponding to the 2-slot version of 307.2 kbps with the ACK Channel transmitting in all slots should be configured in the downlink for both Rev. 0 and Rev. A.

Band	Channel	1xEvDO	CDMA2000 RC	SO2 Loopback	SO55 Loopback	TDSO SO32 Loopback
CDMA	1013	-	RC1	24.95	24.89	-
			RC3	24.92	24.87	24.90
	363	-	RC1	24.93	24.95	-
			RC3	24.94	24.95	24.97
	777	-	RC1	24.91	24.92	-
			RC3	24.96	24.98	24.98

13.1 SAR TEST DATA SUMMARY

Mixture Type:	835 MHz Head
Dielectric Constant:	40.8
Conductivity:	0.875

Ambient TEMPERATURE (°C)	22.5
Liquid TEMPERATURE (°C)	22.2
Relative HUMIDITY (%)	45

13.1.1 Measurement Results (Cellular CDMA Head SAR Slide Down)

Frequency		Modulation	Conducted Power (dBm)		Battery	Phantom Position	Ant. Position	SAR(mW/g)
MHz	Chan.		Begin	End				
824.70	1013	CDMA	24.87	24.85	Standard	Touch / Left Ear	Intenna	0.353
835.89	0363	CDMA	24.92	24.90	Standard		Intenna	0.301
848.31	0777	CDMA	24.98	24.95	Standard		Intenna	0.464
824.70	1013	CDMA	24.87	24.86	Standard	Touch / Right Ear	Intenna	0.447
835.89	0363	CDMA	24.92	24.90	Standard		Intenna	0.338
848.31	0777	CDMA	24.98	24.94	Standard		Intenna	0.487
824.70	1013	CDMA	-	-	Standard	Tilt 15° / Left Ear	Intenna	-
835.89	0363	CDMA	24.92	24.90	Standard		Intenna	0.222
848.31	0777	CDMA	-	-	Standard		Intenna	-
824.70	1013	CDMA	-	-	Standard	Tilt 15° / Right Ear	Intenna	-
835.89	0363	CDMA	24.92	24.90	Standard		Intenna	0.241
848.31	0777	CDMA	-	-	Standard		Intenna	-
ANSI/ IEEE C95.1 1992 – Safety Limit						Head		
Spatial Peak						1.6 W/kg (mW/g)		
Uncontrolled Exposure/ General Population						Averaged over 1 gram		

Measured Depth of Simulating Tissue: 15.0 cm

NOTES:

- The test data reported are the worst-case SAR value with the antenna-head position set in a typical configuration.
- All modes of operation were investigated and the worst-case are reported.
- Battery Type ☒ Standard ☐ Extended ☐ Fixed
- Power Measured ☒ Conducted ☐ EIRP ☐ ERP
- SAR Measurement System ☒ SPEAG
- SAR Configuration ☒ Head ☐ Body ☐ Hand
- Test Signal Call Mode ☐ Manual Test cord ☒ Base Station Simulator
- Head SAR was tested under RC3/SO55
- Justification for reduced test configurations : per FCC/OET Supplement C (July, 2002), if the SAR measured at the middle channel for each test configuration (Left, right, cheek/touch, tile/ear, extended and retracted) is at least 3.0 dB lower than the SAR limit, testing at the high and low channels is optional for such test configuration(s)

13.1 SAR TEST DATA SUMMARY

Mixture Type:	835 MHz Head
Dielectric Constant:	40.8
Conductivity:	0.875

Ambient TEMPERATURE (°C)	22.5
Liquid TEMPERATURE (°C)	22.2
Relative HUMIDITY (%)	45

13.1.2 Measurement Results (Cellular CDMA Head SAR Slide Up)

Frequency		Modulation	Conducted Power (dBm)		Battery	Phantom Position	Ant. Position	SAR(mW/g)
MHz	Chan.		Begin	End				
824.70	1013	CDMA	24.87	24.85	Standard	Touch / Left Ear	Intenna	0.739
835.89	0363	CDMA	24.92	24.90	Standard		Intenna	0.629
848.31	0777	CDMA	24.98	24.95	Standard		Intenna	0.718
824.70	1013	CDMA	24.87	24.86	Standard	Touch / Right Ear	Intenna	0.770
835.89	0363	CDMA	24.92	24.90	Standard		Intenna	0.591
848.31	0777	CDMA	24.98	24.94	Standard		Intenna	0.796
824.70	1013	CDMA	-	-	Standard	Tilt 15° / Left Ear	Intenna	-
835.89	0363	CDMA	24.92	24.90	Standard		Intenna	0.308
848.31	0777	CDMA	-	-	Standard		Intenna	-
824.70	1013	CDMA	-	-	Standard	Tilt 15° / Right Ear	Intenna	-
835.89	0363	CDMA	24.92	24.90	Standard		Intenna	0.308
848.31	0777	CDMA	-	-	Standard		Intenna	-
ANSI/ IEEE C95.1 1992 – Safety Limit						Head		
Spatial Peak						1.6 W/kg (mW/g)		
Uncontrolled Exposure/ General Population						Averaged over 1 gram		

Measured Depth of Simulating Tissue: 15.0 cm

NOTES:

- The test data reported are the worst-case SAR value with the antenna-head position set in a typical configuration.
- All modes of operation were investigated and the worst-case are reported.
- Battery Type ☒ Standard ☐ Extended ☐ Fixed
- Power Measured ☒ Conducted ☐ EIRP ☐ ERP
- SAR Measurement System ☒ SPEAG
- SAR Configuration ☒ Head ☐ Body ☐ Hand
- Test Signal Call Mode ☐ Manual Test cord ☒ Base Station Simulator
- Head SAR was tested under RC3/SO55.
- Justification for reduced test configurations : per FCC/OET Supplement C (July, 2002), if the SAR measured at the middle channel for each test configuration (Left, right, cheek/touch, tile/ear, extended and retracted) is at least 3.0 dB lower than the SAR limit, testing at the high and low channels is optional for such test configuration(s)

13.1 SAR TEST DATA SUMMARY

Mixture Type: 835 MHz Body
 Dielectric Constant: 54.8
 Conductivity: 0.96

Ambient TEMPERATURE (°C)	<u>22.5</u>
Liquid TEMPERATURE (°C)	<u>22.2</u>
Relative HUMIDITY (%)	<u>45</u>

13.1.3 Measurement Results (Cellular CDMA Body SAR without Holster)

Frequency		Modulation	Conducted Power (dBm)		Battery	Separation Distance (cm)	Ant. Position	SAR(mW/g)
MHz	Chan.		Begin	End				
824.70	1013 (Low)	CDMA	24.87	24.85	Standard	1.5cm without Holster	Intenna	0.69
835.89	0363 (Middle)	CDMA	24.92	24.90	Standard		Intenna	0.571
848.31	0777 (High)	CDMA	24.98	24.95	Standard		Intenna	0.723
ANSI/ IEEE C95.1 1992 – Safety Limit Spatial Peak Uncontrolled Exposure/ General Population						Body 1.6 W/kg (mW/g) Averaged over 1 gram		

Measured Depth of Simulating Tissue: 15.0 cm

NOTES:

- The test data reported are the worst-case SAR value with the antenna-head position set in a typical configuration.
- All modes of operation were investigated and the worst-case are reported.
- Battery Type ☒ Standard ☐ Extended ☐ Fixed
- Power Measured ☒ Conducted ☐ EIRP ☐ ERP
- SAR Measurement System ☒ SPEAG
- SAR Configuration ☐ Head ☒ Body ☐ Hand
- Test Signal Call Mode ☐ Manual Test cord ☒ Base Station Simulator
- Body SAR was tested under RC3/SO32.

14.1 SAR TEST EQUIPMENT

Type / Model	Calib. Date	S/N
Staubli Robot RX90L	N/A	F01/ 5K09A1/A/01
Staubli Robot ControllerCS7MB	N/A	F99/5A82A1/C/01
Staubli Teach Pendant (Joystick)	N/A	D221340.01
HP Pavilion t000_puffer	N/A	KRJ51201TV
Windows XP 3.0GHz	N/A	-
SPEAG DAE3V1	March 06	446
SPEAG DAE4V1	Feb. 06	447
SPEAG E-Field Probe ET3DV6	March 06	1609
SPEAG E-Field Probe ET3DV6	August 05	1607
SPEAG Dummy Probe	N/A	-
SPEAG SAM Phantom	N/A	-
SPEAG Light Alignment Sensor	N/A	265
SPEAG Validation Dipole D835V2	August 05	441
SPEAG Validation Dipole D900V2	March 06	121
SPEAG Validation Dipole D1800V2	Sep. 05	2d007
SPEAG Validation Dipole D1900V2	March 06	5d032
Robot Table	N/A	-
Phone Holder	N/A	-
A/B Power Indicator	N/A	-
Remote Power Switch	N/A	-
Phantom Cover D9F09QG0009	N/A	-

NOTE:

The E-field probe was calibrated by SPEAG, by temperature measurement procedure. Dipole Validation measurement is performed by HCT Lab. before each test. The brain simulating material is calibrated by HCT using the dielectric probe system and network analyzer to determine the conductivity and permittivity (dielectric constant) of the brain-equivalent material.

The following list of equipment was used to calibrate the brain equivalent material:

Power Meter(A)	E4419B	June 06	MY40511244
Power Sensor(A)	8481	June 06	MY41090680
Signal Generator	8664A (100kHz ~ 3GHz)	March 06	3744A02069
Power Amp	A0825-4343-R	Sep. 05	A00450
Network Analyzer	8752C (30kHz ~ 3GHz)	March 06	3410A02619
Dielectric Probe Kit	85070C	-	00721521
Dual Directional Coupler	778D	August 05	16072

15.1 CONCLUSION

The SAR measurement indicates that the EUT complies with the RF radiation exposure limits of the ANSI/IEEE C95.1 1992.

These measurements are taken to simulate the RF effects exposure under worst-case conditions. Precise laboratory measures were taken to assure repeatability of the tests.

16.1 REFERENCES:

- [1] Federal Communications Commission, ET Docket 93-62, Guidelines for Evaluating the Environmental Effects of Radio frequency Radiation, Aug. 1996.
- [2] ANSI/IEEE C95.1 - 1991, American National Standard safety levels with respect to human exposure to radio frequency electromagnetic fields, 300kHz to 100GHz, New York: IEEE, Aug. 1992
- [3] ANSI/IEEE C95.3 - 1991, IEEE Recommended Practice for the Measurement of Potentially Hazardous Electromagnetic Fields - RF and Microwave, New York: IEEE, 1992.
- [4] NCRP, National Council on Radiation Protection and Measurements, Biological Effects and Exposure Criteria for Radio Frequency Electromagnetic Fields, NCRP Report No. 86, 1986. Reprinted Feb. 1995.
- [5] T. Schmid, O. Egger, N. Kuster, Automated E-field scanning system for dosimetric assessments, IEEE Transaction on Microwave Theory and Techniques, vol. 44, Jan. 1996, pp. 105-113.
- [6] K. Pokovic, T. Schmid, N. Kuster, Robust setup for precise calibration of E-field probes in tissue simulating liquids at mobile communications frequencies, ICECOM97, Oct. 1997, pp. 120-124.
- [7] K. Poković, T. Schmid, and N. Kuster, E-field Probe with improved isotropy in brain simulating liquids, Proceedings of the ELMAR, Zadar, Croatia, June 23-25, 1996, pp. 172-175.
- [8] Schmid & Partner Engineering AG, Application Note: Data Storage and Evaluation, June 1998, p2.
- [9] V. Hombach, K. Meier, M. Burkhardt, E. Kuhn, N. Kuster, The Dependence of EM Energy Absorption upon Human Head Modeling at 900 MHz, IEEE Transaction on Microwave Theory and Techniques, vol. 44 no. 10, Oct. 1996, pp. 1865-1873.
- [10] N. Kuster and Q. Balzano, Energy absorption mechanism by biological bodies in the near field of dipole antennas above 300MHz, IEEE Transaction on Vehicular Technology, vol. 41, no. 1, Feb. 1992, pp. 17-23.
- [11] G. Hartsgrrove, A. Kraszewski, A. Surowiec, Simulated Biological Materials for Electromagnetic Radiation Absorption Studies, University of Ottawa, Bioelectro magnetics, Canada: 1987, pp. 29-36.
- [12] Q. Balzano, O. Garay, T. Manning Jr., Electromagnetic Energy Exposure of Simulated Users of Portable Cellular Telephones, IEEE Transactions on Vehicular Technology, vol. 44, no.3, Aug. 1995.
- [13] W. Gander, Computer mathematick, Birkhaeuser, Basel, 1992.
- [14] W.H. Press, S.A. Teukolsky, W.T. Vetterling, and B.P. Flannery, Numerical Recepies in C, The Art of Scientific Computing, Second edition, Cambridge University Press, 1992.
- [15] Federal Communications Commission, OET Bulletin 65, Evaluating Compliance with FCC Guidelines for Human Exposure to Radiofrequency Electromagnetic Fields. Supplement C, Dec. 1997.
- [16] N. Kuster, R. Kastle, T. Schmid, Dosimetric evaluation of mobile communications equipment with known precision, IEEE Transaction on Communications, vol. E80-B, no. 5, May 1997, pp. 645-652.
- [17] CENELEC CLC/SC111B, European Prestandard (prENV 50166-2), Human Exposure to Electromagnetic Fields High-frequency: 10kHz-300GHz, Jan. 1995.
- [18] Prof. Dr. Niels Kuster, ETH, EidgenØssische Technische Hoschschule ZØrich, Dosimetric Evaluation of the Cellular Phone.