

blink  
an amazon company

XT2

## Quick Start Guide



Start  
Here

# Thank you for purchasing the Blink XT2!

## You can install the Blink XT2 in three easy steps:

**Step 1:** Download the Blink Home Monitor App ([page 4](#))

**Step 2:** Connect your Sync Module ([page 4](#))

**Step 3:** Add and position your camera(s) ([page 6](#))

## To install your camera or system, you can:

- Follow the in-app instructions as directed.
- Follow the steps listed in this guide.
- For more detailed instructions and/or how to customize your experience, scan the QR code or visit: [support.blinkforhome.com](https://support.blinkforhome.com)



## How to get started:

- If you're adding a new system, go to **Step 1** on [page 4](#) for instructions on how to add your system.
- If you're adding a camera to an existing system, go to **Step 3** on [page 6](#) for instructions on how to add your camera(s).
- Before you begin, please make sure you have the following minimum requirements:
  - A mobile device running the minimum software requirement. You can check the latest software requirements by going to: [blinkforhome.com/requirements](https://blinkforhome.com/requirements)
  - Home WiFi Network (2.4GHz only).
  - Internet access with upload speed of at least 2 Mbps.

## Step 1: Download the Blink Home Monitor App

- A. Download and launch the Blink Home Monitor App on your phone or tablet through the Apple App Store, Google Play Store, or Amazon App Store.
- B. Create a new Blink account.

## Step 2: Connect Your Sync Module

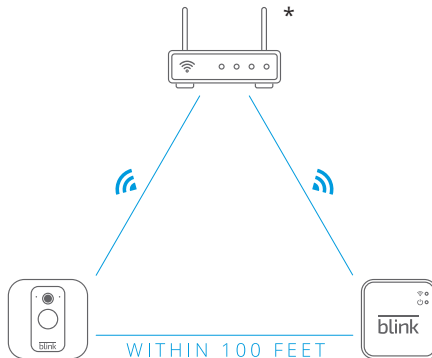
- A. In your app, select "Add a System".
- B. Follow the in-app instructions to complete Sync Module setup.

**Note:** The Sync Module is required for your cameras to function.



Blink Sync Module

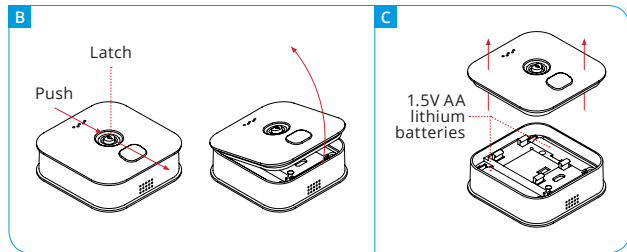
Connectivity between the camera and the Sync Module is optimized when positioned within 100 ft of each other.



\* WiFi range is dependent on conditions.  
Distance between Blink devices and WiFi can vary.

## Step 3: Add Your Camera(s)

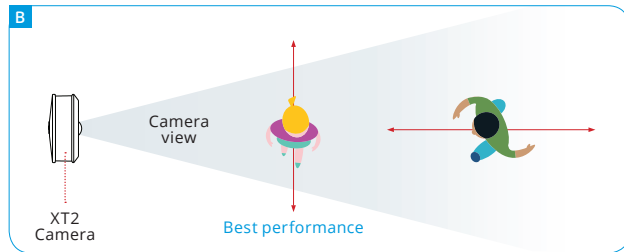
- In your app, select “Add a Blink Device” and choose your camera.
- Remove the camera’s back cover by pressing the latch in the center downward and simultaneously pulling the cover away from the camera.
- Insert included 2 AA 1.5V non-rechargeable lithium metal batteries.
- Leave the back cover off and continue with in-app instructions to complete setup.



## Positioning

- Place your camera in your desired location and go to camera settings to check that the WiFi and Sync Module signal strengths are strong.
- Start a live view in your Blink app and adjust your camera’s position as needed to make sure you’re seeing what you want.

**Note:** Motion detection is optimized to detect when a subject moves across the field of view horizontally rather than directly toward or away from the camera.

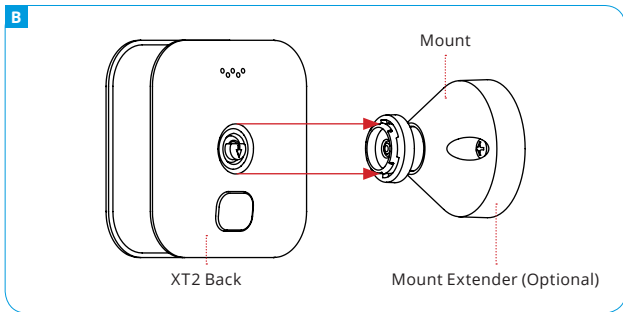
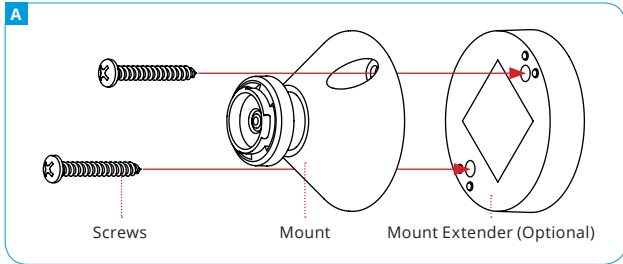


## Mounting

Your mounting kit includes: screws (2), a mount (1), and a mount extender\* (1).

**\*Note:** The mount extender is optional. It helps increase the range of motion of the camera once it's mounted.

- A. Attach the mount (and if needed, optional extender) to the wall using the provided screws in your desired position.
- B. Snap the center hole on the back of the camera onto the circular portion of the mount.
- C. Once mounted, you can angle the camera to adjust your field of view.



## Having trouble?

If you are experiencing trouble or need help with your Blink XT2 or other Blink products, please contact our support team (available 24/7) through any of the following options:

- To view support articles go to: [support.blinkforhome.com](https://support.blinkforhome.com)
- Contact us by going to the hamburger menu (☰) in the app, tapping '[Contact Customer Support](#)' and then pressing the blue '[Call Tech Support](#)' button.
- To open a ticket online, visit: '[support.blinkforhome.com](https://support.blinkforhome.com)' and select '[contact us](#)' in the top right corner of the page to submit a request form.
- Call us directly at: [781-332-5465](tel:781-332-5465)

## Enjoying your Blink XT2 system?

Your opinion matters and you can show others how Blink could help them by sharing your experience through any of the following options:



Leave us a review from where you purchased.



Share your experience with the Blink community at: [community.blinkforhome.com](https://community.blinkforhome.com)



Send us your best user videos via social ([@blinkforhome](#)) or email ([info@blinkforhome.com](mailto:info@blinkforhome.com))! We love seeing what our users catch on their Blink cameras.

## Make the most of your system

Here are some additional features that come with your system:



### Individual camera arm/disarm

Individually arm or disarm cameras when your system is armed to detect motion by tapping the running man icon above each camera. The camera is armed when the icon is blue and disarmed when gray.



### Scheduled system arming

To set your system to automatically arm or disarm, select "scheduling" in the system name dropdown menu of the app, then tap the plus sign to set dates and times via the clock.

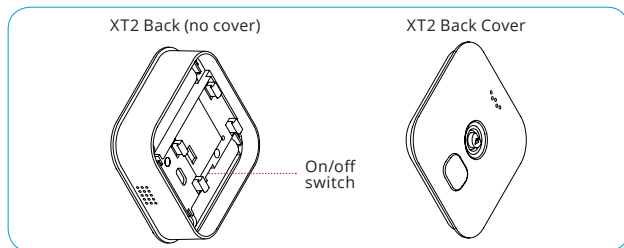


### Live view recording

Automatically record and save live views from your XT2 camera(s) by toggling on "Save all XT2 Live Views" in the system name dropdown menu at the top of the app home page.

### Blue recording light

Remove the back cover of your camera(s) to manually switch the blue "REC. LED" to either "ON" (blue light will turn on when camera records or streams video) or "OFF" (light will not turn on to indicate when in use) by using tweezers or a similar tool.



# Important Safeguards:



**WARNING:** FAILURE TO READ AND FOLLOW THESE SAFETY INSTRUCTIONS COULD RESULT IN FIRE, ELECTRIC SHOCK, OR OTHER INJURY OR DAMAGE

## **Safety and Compliance Information Use Responsibly.**

Read all instructions and safety information before use.

### **Lithium Battery Safety Information**

The Lithium batteries accompanying this device cannot be recharged. Do not open, disassemble, bend, deform, puncture, or shred the battery. Do not modify, attempt to insert foreign objects into the battery or immerse or expose to water or other liquids. Do not expose the battery to fire, explosion or other hazard. Promptly dispose of used batteries in accordance with applicable laws and regulations. If dropped and you suspect damage, take steps to prevent any ingestion or direct contact of fluids and any other materials from the battery with skin or clothes.

If a battery leaks, remove all batteries and recycle or dispose of them in accordance with battery manufacturer's recommendations. If fluid

from the battery comes into contact with skin or clothes, flush with water immediately.

Insert the batteries in the proper direction as indicated by positive (+) and negative (-) markings in battery compartment. It is highly recommended to use Lithium batteries with this product. Do not mix used and new batteries or batteries of different types (for example, Lithium and alkaline batteries). Always remove old, weak, or worn-out batteries promptly and recycle or dispose of them in accordance with Local and national disposal regulations.

### **Other Safety and Maintenance Considerations**

1. Your Blink XT2 can withstand outdoor use and has been tested to withstand water projected through a 6.3mm nozzle at a volume of 12.5 liters per minute and a pressure of 30 kPa at a distance of 3 meters for at least 3 minutes. However, Blink XT2 is not intended for underwater use and may experience effects from exposure to water. Do not intentionally immerse your Blink XT2 in water or expose it to liquids. Do not spill any food, oil, lotion, or other abrasive substances on your Blink XT2. Do not expose your Blink XT2 to pressurized water, high velocity water, or extremely humid conditions (such as steam room).



2. To protect against electric shock, do not place cord, plug, or device in water or other liquids.
3. Your Sync Module is shipped with an AC adapter. Your Sync Module should only be used with the AC power adapter and USB cable included in box. To reduce the risk of fire or electric shock when using the AC adapter, carefully follow these instructions:
  - Do not force the power adapter into a power outlet.
  - Do not expose power adapter or its cable to liquids.
  - If the power adapter or cable appears damaged, discontinue use immediately.
  - Power adapter designed only for use with Blink devices.
4. Closely supervise children when the device is used by or near children.
5. Only use accessories that are recommended by the manufacturer. Use of third-party accessories may lead to damage of your device or accessory and may cause fire, electric shock, or injury.
6. To avoid risk of electric shock, do not touch your Sync Module or any wires connected to it during a lightning storm.

7. Power adapter designed only for use with Sync Module.
8. This device is designed to operate in a particular region and is not intended to be used or distributed outside of that region.

## FCC Compliance Statement (USA)

This Device (including related accessories like the adapter) complies with part 15 of the FCC Rules. Operation is subject to the following two conditions: (1) such Device may not cause harmful interference, and (2) such Device must accept any interference received, including interference that may cause undesired operation.

The party responsible for FCC compliance is  
[Amazon.com](https://www.amazon.com) Services, Inc.

410 Terry Ave North, Seattle, WA 98109 USA

If you wish to contact Blink please go to this link  
[www.blinkforhome.com/pages/contact-us](https://www.blinkforhome.com/pages/contact-us)

Device Name: Blink XT2

Model: BCM00200U and BCM00201U

## Product Specifications Blink XT2

Model Number: BCM00200U and BCM00201U

Electrical Rating: Power: 2 1.5V AA Single Use Lithium Metal batteries and optional (not included) USB 5V 1A external power supply

Operating Temperature: -4 to 113 degrees F

## Product Specifications Sync Module

Model Number: BSM00203U

Electrical Rating: 100-240V 50/60 HZ 0.2A

Operating Temperature: 32 to 95 degrees F

## Other Information

For additional safety, compliance, recycling, and other important information regarding your device, please refer to the Legal and Compliance section of the Settings menu on your device.

## Product Disposal Information

In some areas, the disposal of certain electronic devices is regulated. Make sure you dispose of, or recycle, your device in accordance with your local laws and regulations. For information about recycling your device, go to '<http://www.amazon.com/devicesupport>'.

## Blink Terms & Policies

BEFORE USING THE BLINK DEVICE, PLEASE READ THE TERMS FOUND AT <HTTPS://BLINKFORHOME.COM/PAGES/BLINK-TERMS-WARRANTIES-AND-NOTICES> AND ALL RULES AND POLICIES FOR THE DEVICE AND SERVICES RELATED TO THE DEVICE (INCLUDING, BUT NOT LIMITED TO, THE APPLICABLE BLINK PRIVACY NOTICE AND ANY APPLICABLE RULES OR USAGE PROVISIONS ACCESSIBLE THROUGH THE <HTTPS://BLINKFORHOME.COM/PAGES/BLINK-TERMS-WARRANTIES-AND-NOTICES> WEBSITE OR THE BLINK APP (COLLECTIVELY, THE "AGREEMENTS"). BY USING THE BLINK DEVICE, YOU AGREE TO BE BOUND BY THE TERMS OF THE AGREEMENTS.

Your Blink device is covered by a one year Limited Warranty. Details are available at '<https://blinkforhome.com/pages/blink-terms-warranties-and-notices>'.

© 2019 Amazon.com, Inc. or its affiliates. Amazon, Blink, and all related logos are trademarks of Amazon.com, Inc. or its affiliates.

