

WMS PICTURES (exhibit 3 and 9)

Below is a picture of the unit in its current packing box. This BOM name/level is WMS-0001

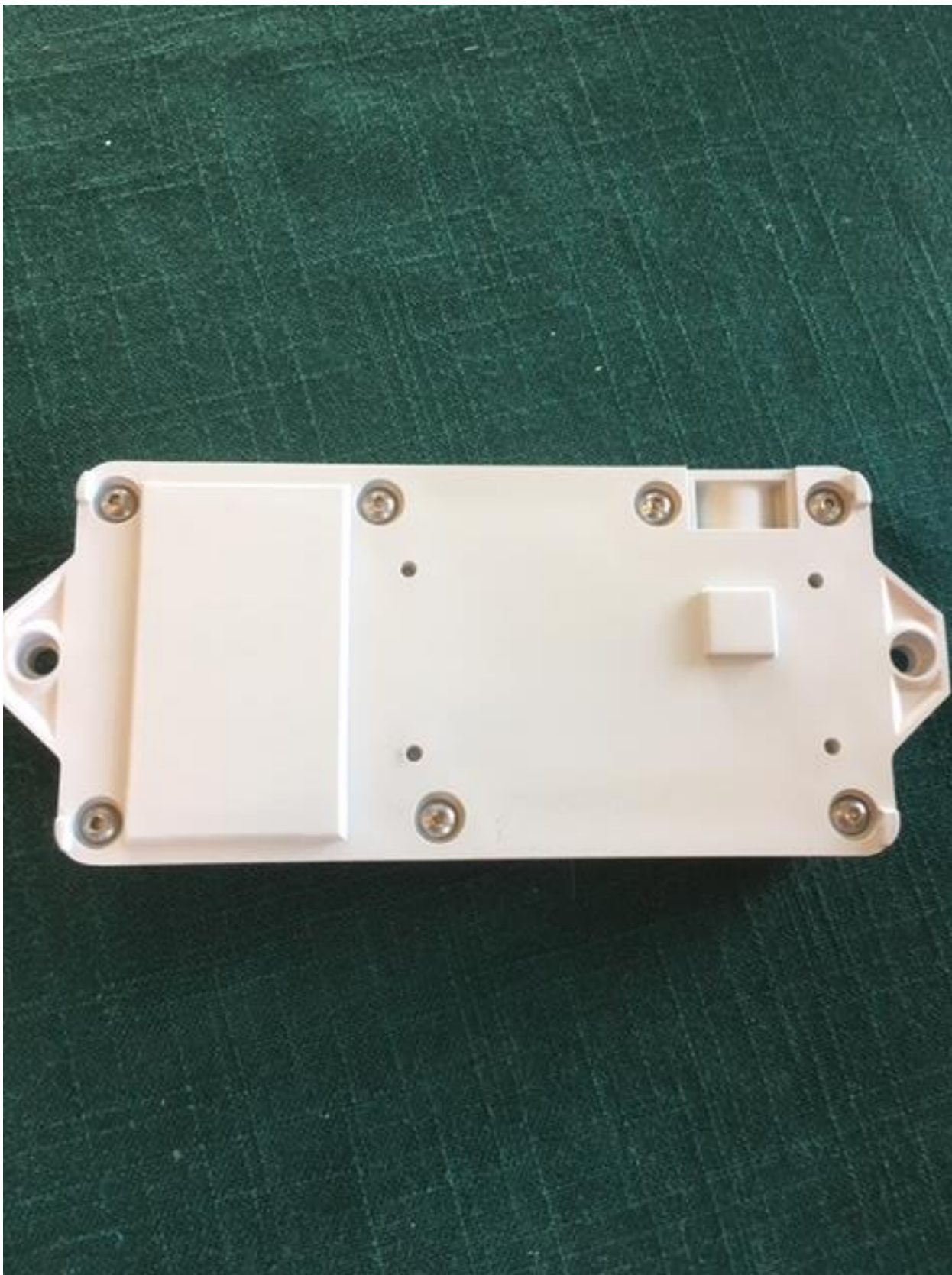


The next level is what we call TOP ASSEMBLY. In the BOM it is 01046102



This is the view of 01046102 from the top





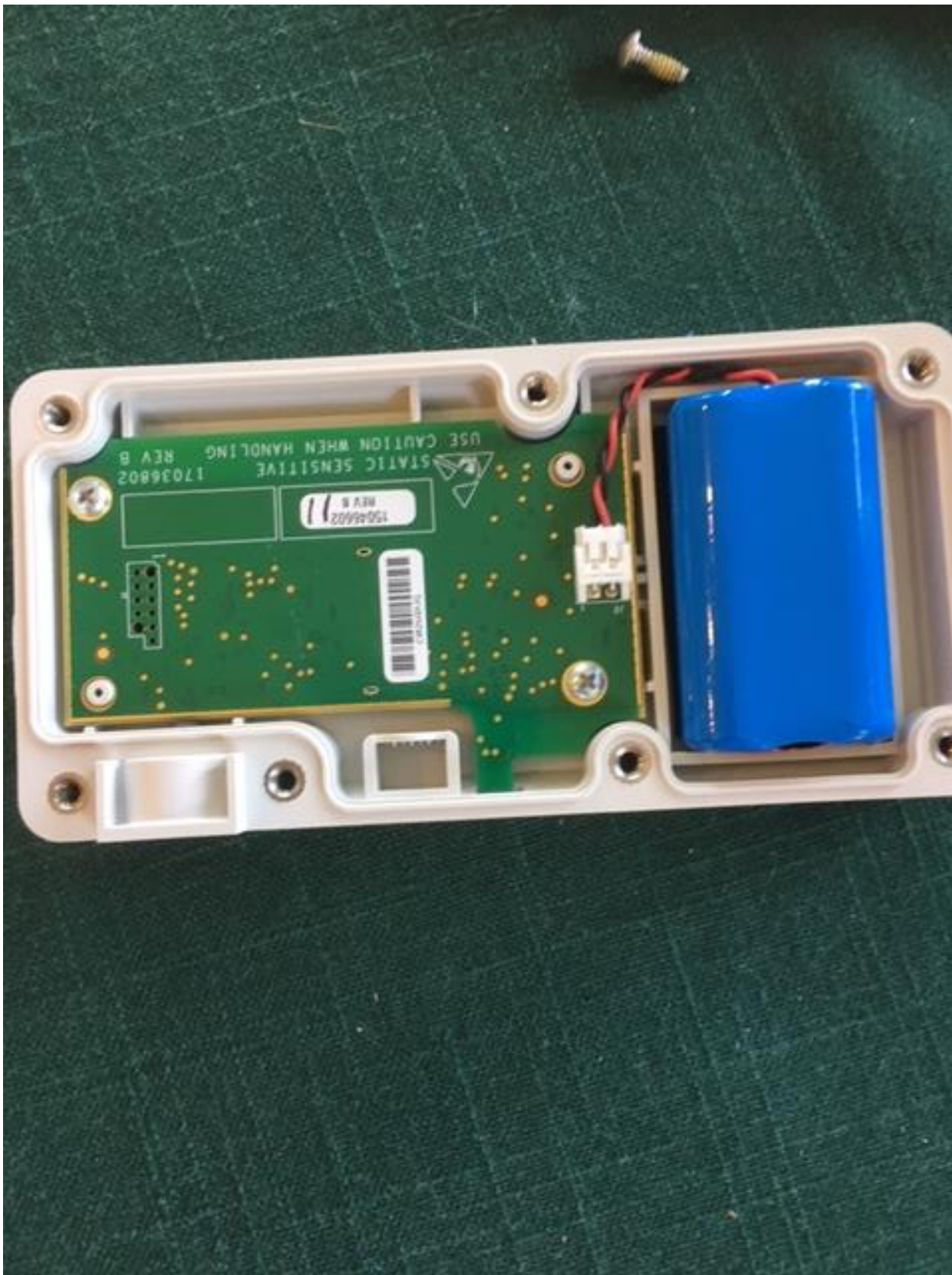
This is the bottom view of 01046102

Next two pictures are side views of 01046102

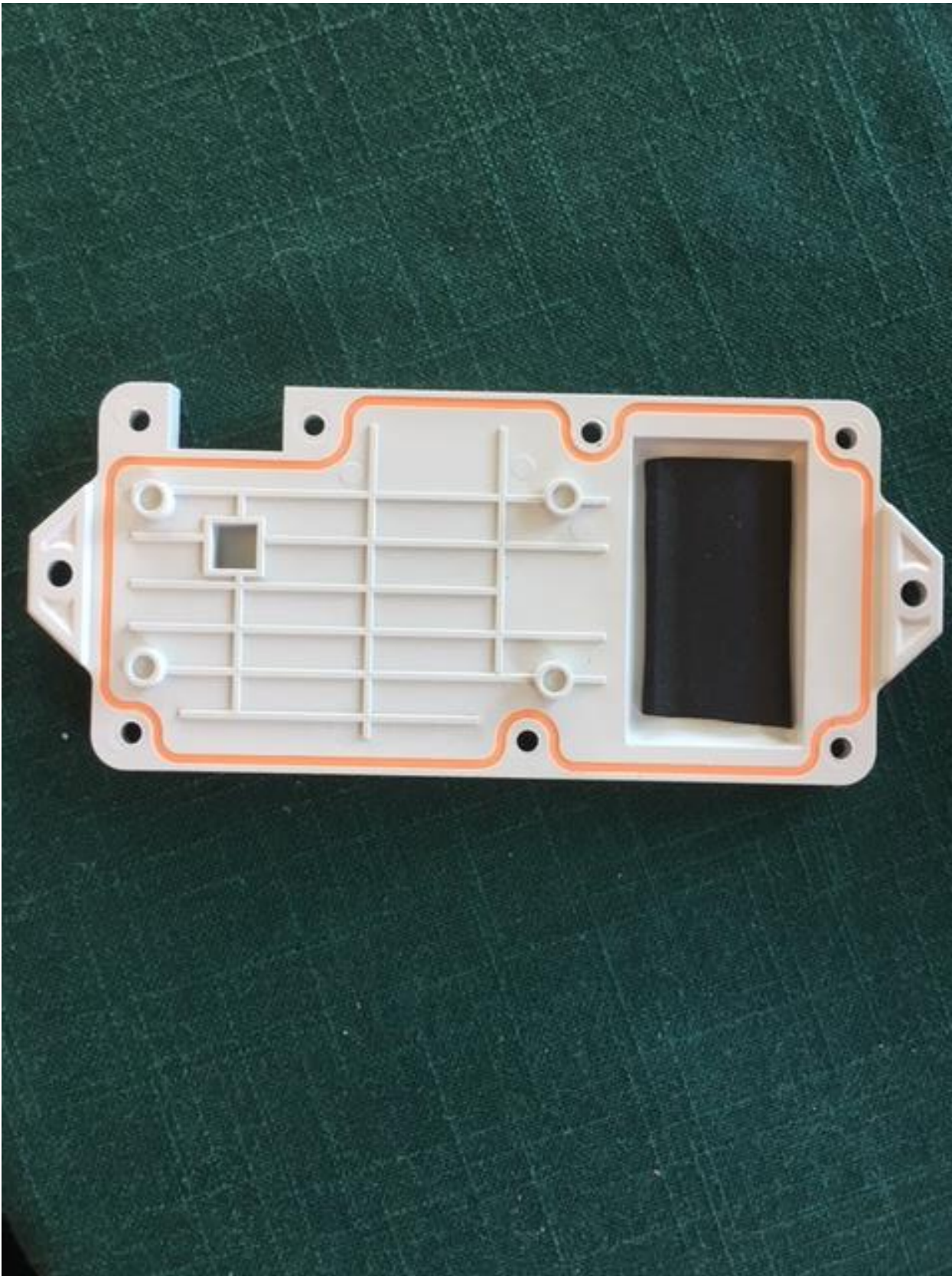








This is the 66016603 assembly. It has the magnet, battery and the 66016502 assembly (light pipes)



This is the bottom assembly, 66016502. It contains the gasket(orange) and foam for the battery





The above picture is the assembly showing the LEDS with potting 66016602

The last two pictures are the CCA 15T46602