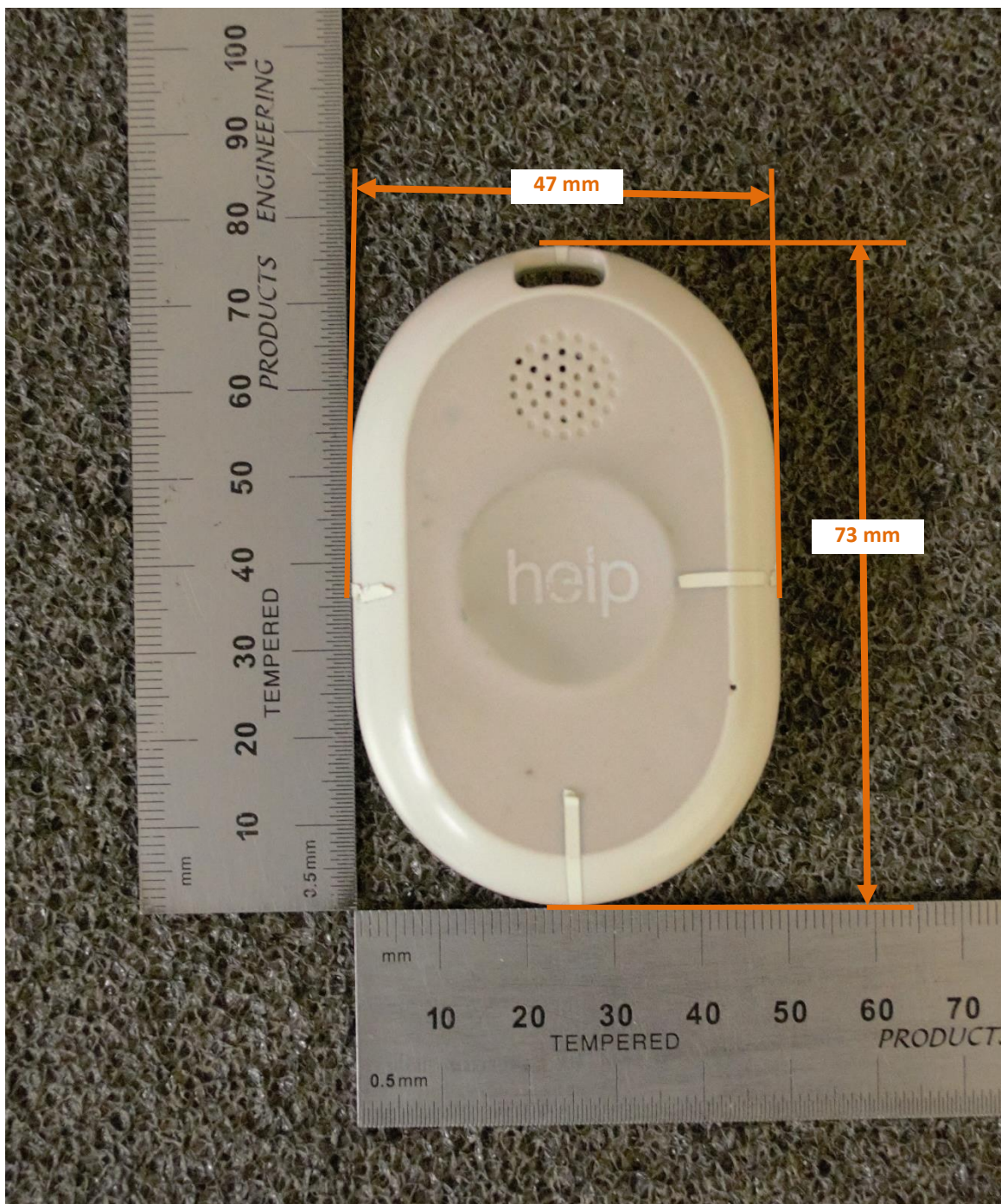


## DUT and SAR Set-up Photos

### Overall Dimensions





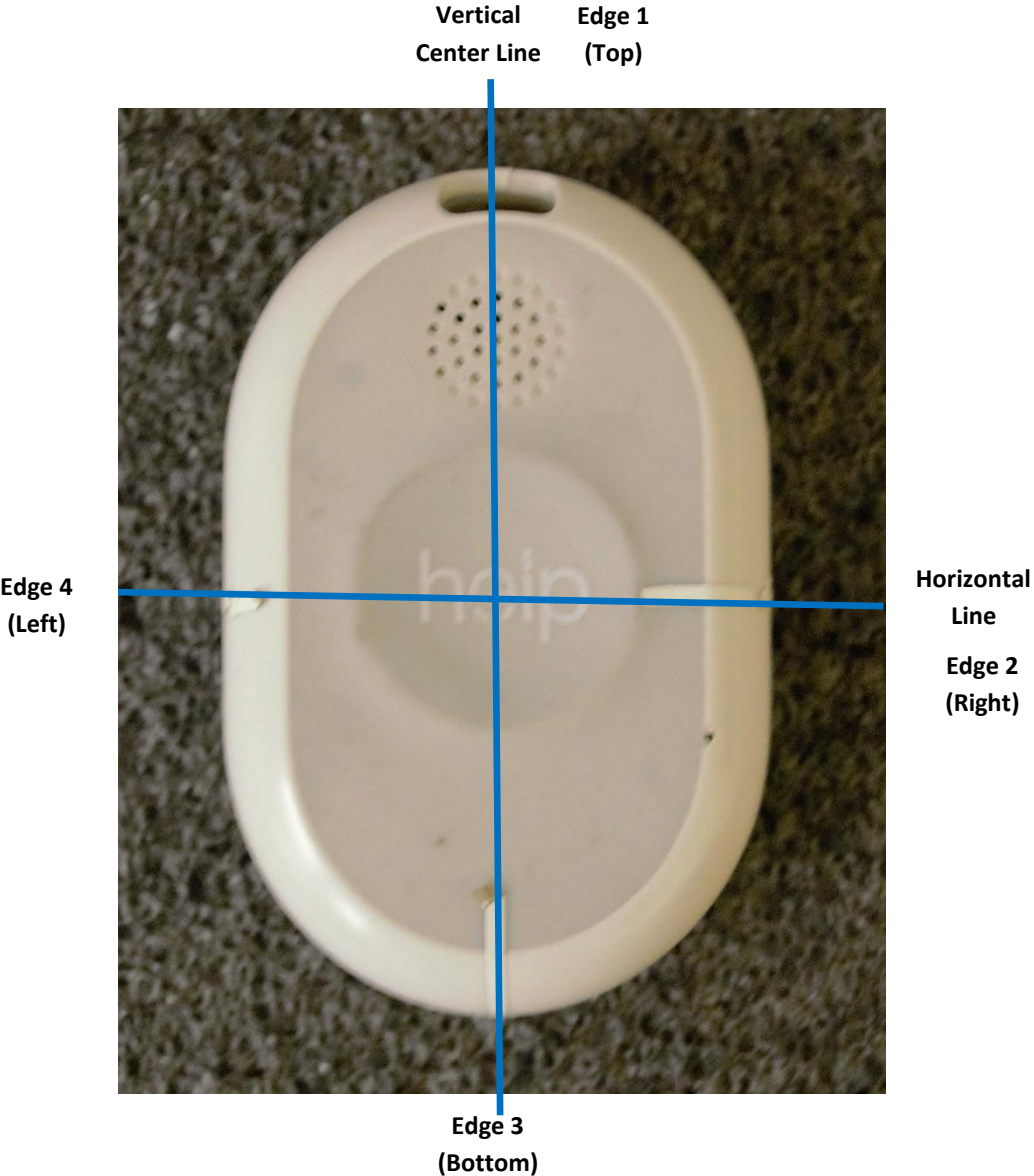
Front View of the DUT



Rear View of the DUT

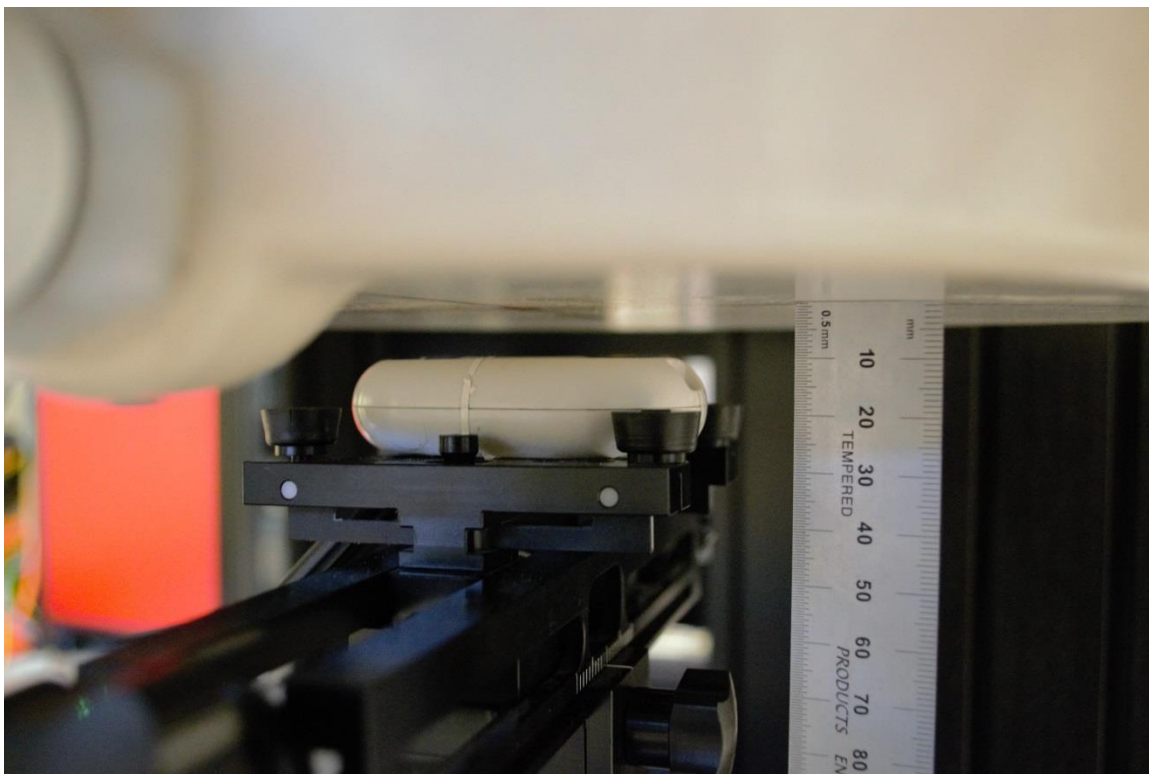


**Setup Photos**



## Head Exposure Conditions

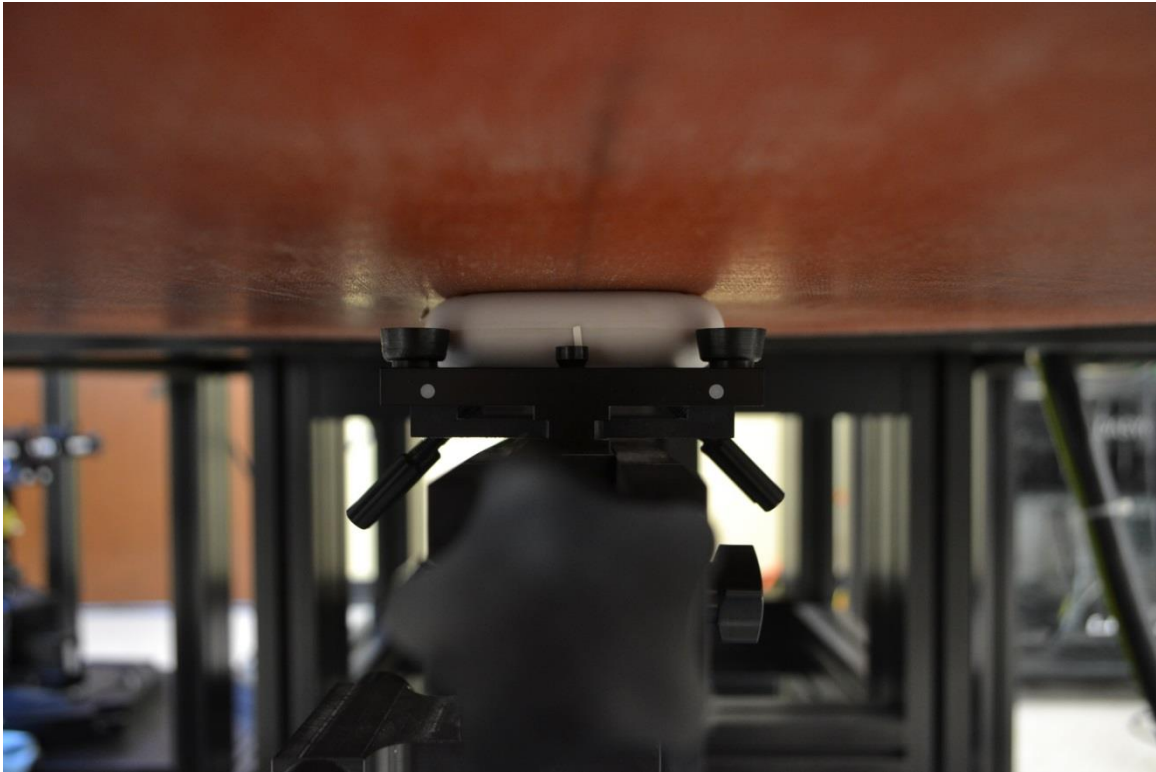
Next to Mouth





## Body-worn Exposure Conditions

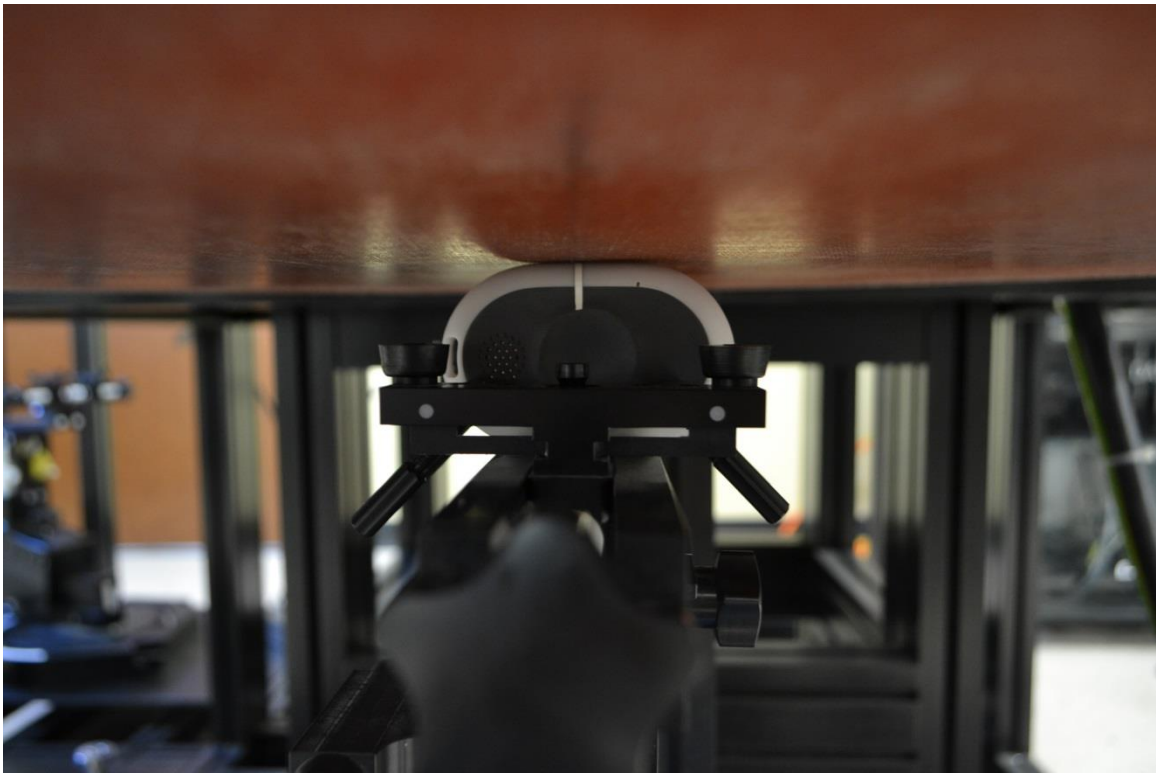
Rear



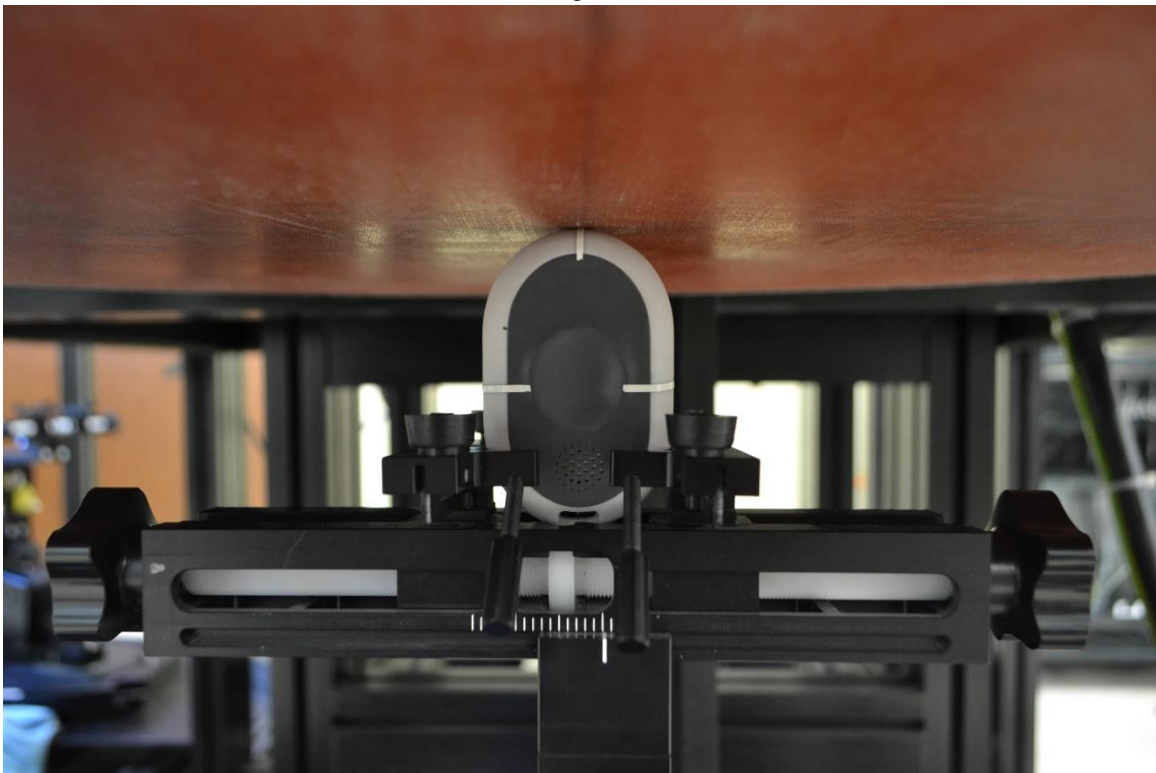
Front



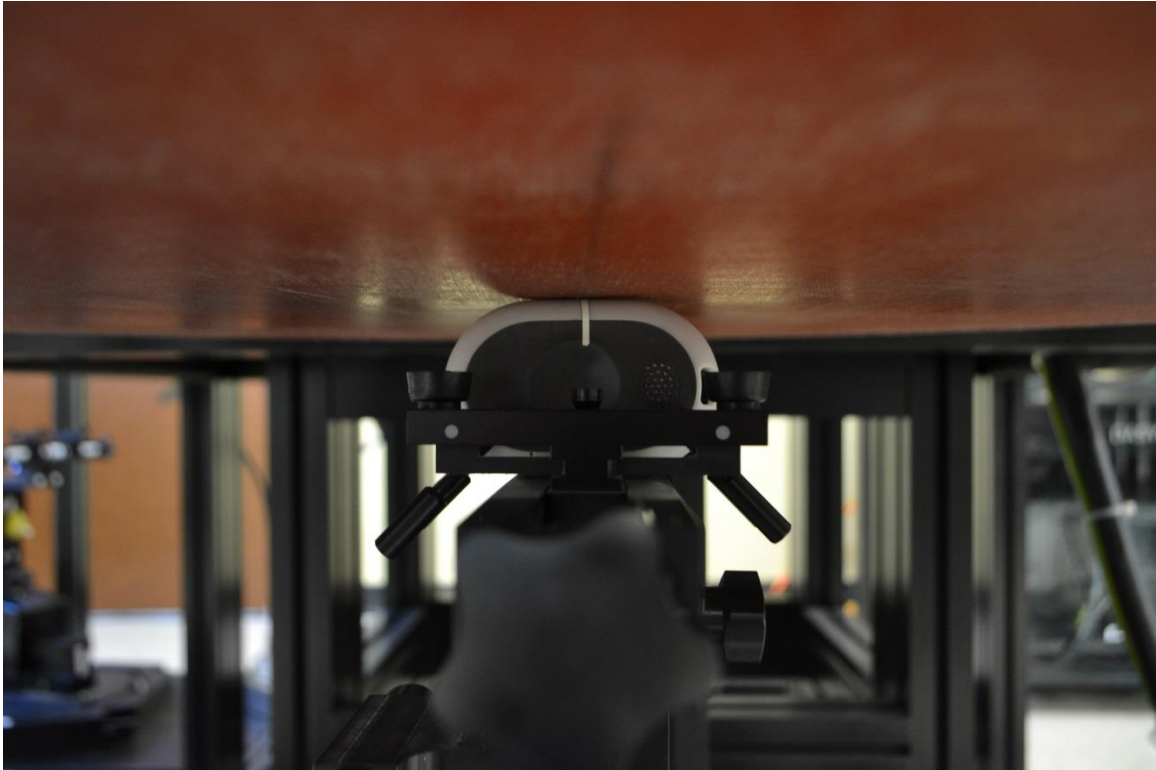
Edge 2



Edge 3



Edge 4



# Antenna Location

ANH0318-01

MA01

