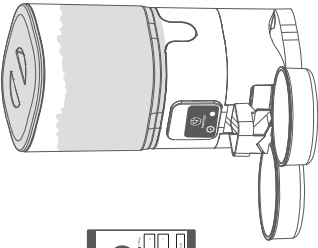



# AUTOMATIC PET FEEDER

## User Manual



Please read this manual carefully and keep it for future use

### Daily Feeding

(dog) weight	Normal activity	Increase	(dog) weight	Normal activity	Increase
2kg	35g	45g	8kg	111g	128g
4kg	66g	76g	10kg	131g	152g
6kg	89g	104g	12kg	150g	174g

(dog) weight	Normal activity	Increase	(dog) weight	Normal activity	Increase
14kg	178g	205g	235g	233g	270g
16kg	197g	228g	259g	250g	329g
18kg	197g	228g	259g	267g	351g

(dog) weight	Normal activity	Increase	(dog) weight	Normal activity	Increase
28kg	274g	335g	367g	350g	405g
28kg	290g	350g	381g	380g	427g
30kg	305g	355g	402g	379g	439g
32kg	320g	371g	425g	393g	455g
34kg	335g	385g	443g	407g	471g

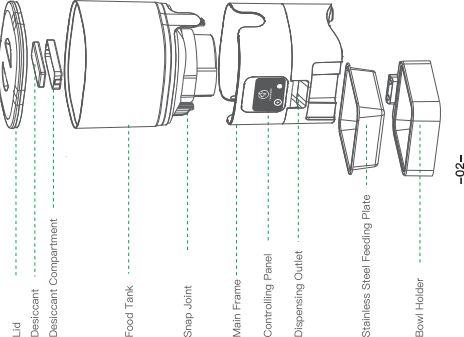
(cat) Month	1-2	2-4	4-6	6-8	8-12
Suggest	20-30g	30-50g	50-70g	70-80g	80-90g

(cat) weight	2-3kg	3-5kg	5-7kg	pregnancy	Lactation period
Suggest	25-35g	35-55g	55-85g	70-110g	120-150g

If the pet fail to eat up the previous programmed meal, please reduce the next meal portion.

-01-

### Component Breakdown

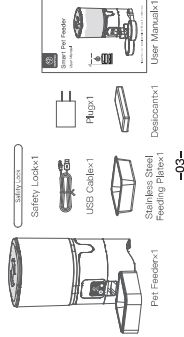


-02-

### Product Specifications

Product Name	AUTOMATIC PET FEEDER
Suit For	Cat, Dog, Rabbit, Squirrel, Small Pets
Rated Voltage	5V 1A
Product Power	5W
Power Supply	Alkaline battery(AA battery)x4, with DC adaptor
Material	Echo-Friendly ABS + HPS
Product Size	192.5*178.5*322mm
Product Weight	1.8kg
Product Capacity	6L
Pet Food	Dry Food
Portion Size	~20g/Portion (differing due to the different pet food density)

### Packing List

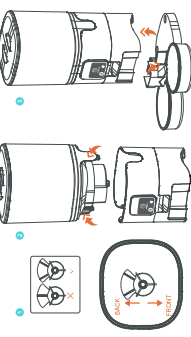


-03-

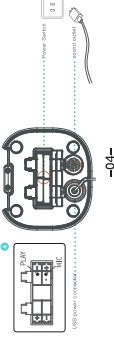
### Product Hardware Assembly Steps

1. Follow the instructions (picture 1) to disassemble or assemble the feeder.

- Please pay attention to the direction of the impeller, the impeller cannot be installed in the wrong direction.
- The inlet (backward) should be opposite to the outlet (picture 2).
- Please, splitter, food bowl should be installed first and then put on the feeder (picture 3).



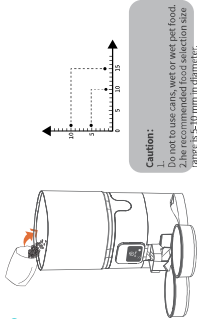
2. Connect with external power and put in the battery (dual power supplies are recommended). When the power is connecting, if there is a battery in it, you need take it out, press and hold the [MIC] for recording 10s, the [PAU.1] can choose the recording.



-04-

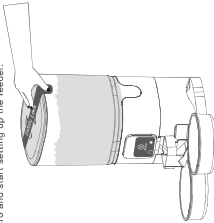


3.Milling feed.  
Pour in the dry pet food, close the lid and lock the safety lock



**Caution:**  
1. Do not to use cats, wet or wet pet food.  
2. The recommended food selection size range is 5-30mm in diameter.

4.Install Velpo and start setting up the feeder.



-05-

## Description of Buttons and Indicators

**Note:**  
■Single press **1 + 1** to manually dispense food.  
■The product is only suitable for 2.4G network (5G network can not be used).  
■Battery power is **only** for emergency use in case of power failure, please ensure dual power supply for normal use.  
■Make sure the feeder and home (WiFi) are connected, the distance between the two should not be too far apart.



**In good working order-LED Indicator Notices:**

Product Status	Light Color
Low Battery (Battery Powered)	Flashing Red
WiFi Disconnected	Turn Off
WiFi Connection In Progress	Blue Light Flashes Quickly
WiFi Connected Status	Solid Blue Light

-06-

## App Download and Use Steps

■ **Software Download and Installation**  
1. Scan the QR code to download the Smart Life APP.  
2. Log in to the Smart Life APP and register your application account.  
**Play(Android) Or App Store(iOS).**  
**Download and install the app by searching "Smart Life" on Google.**

### Smart Life

## Connect the Device

■ **Connect the Device (turn on bluetooth auto-connect)**  
1. Turn on the Bluetooth function of the mobile phone.  
2. Login to Smart Life app and refresh the page.  
3. Select the device you want to add.  
4. Select the device type (2.4G network or 5G network).  
5. Wait for the device to be connected, click "Next".  
6. Click the "Finish" button in the upper right corner to enter the feeding page.



-07-

## Set A Reasonable Feeding Time

Feeding Settings: You can continuously set a daily/feeding schedule for your pet.

### Note:

The function consumes a lot when battery power is low, so it is more energy-saving to use dual power supply.

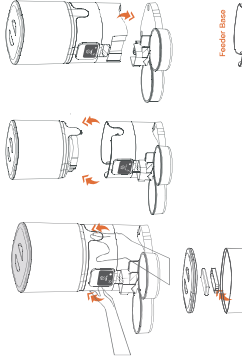
## Troubleshooting Tips

1. Please connect the external power supply before downloading the program.  
2. Program: 2.4Ghz signal, not 5Ghz signal.  
3. The distance between feeder and home WiFi should not be too far, make sure both can be connected.

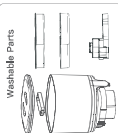


-08-

## Product Disassembly & Cleaning



**NonePlease do not wash the Feeder Base with water.**



-09-

## Q&a Trouble Shooting

**Q:Why I can not connect to the WIFI**  
Please check if power supply has been connected,Then make sure you select the 2.4G instead of 5G WiFi,Then connect it again.  
**Q:Why feed on the APP but no food dispensing from the feeder?**  
Firstly, please check if the power supply has been connected properly. Secondly, please check if the account has been occupied by others. Suggest to unload and re-install the APP.  
**Q:Why I can not log-in my Smart life account?**  
Firstly, please check if this feeder has been connected to the WIFI properly. Secondly, please check if the account has been occupied by others. Suggest to unload and re-install the APP.  
**Q:Is it possible to set up a feeder schedule when the feeder is not connected to the WIFI?**  
Under the condition that the feeder is connected to the network properly, the feeding schedule can be set on battery power, but the battery power consumes a lot of working time only lasts 20-24 hours, so it is more energy-saving to use dual power supply.

## 100% After Sales Service

**We provide a 1-year warranty for this appliance.**  
Please email our support team at: [happy@papipet.com](mailto:happy@papipet.com) if you have any questions, attach your order number and describe your problem in your email. We will get back to you within 24 hours.

-10-



This device complies with part 15 of the FCC Rules. Operation is subject to the following two conditions: (1) This device may not cause harmful interference, and (2) this device must accept any interference received, including interference that may cause undesired operation.

Any Changes or modifications not expressly approved by the party responsible for compliance could void the user's authority to operate the equipment.

**Note:** This equipment has been tested and found to comply with the limits for a Class B digital device, pursuant to part 15 of the FCC Rules. These limits are designed to provide reasonable protection against harmful interference in a residential installation. This equipment generates uses and can radiate radio frequency energy and, if not installed and used in accordance with the instructions, may cause harmful interference to radio communications. However, there is no guarantee that interference will not occur in a particular installation. If this equipment does cause harmful interference to radio or television reception, which can be determined by turning the equipment off and on, the user is encouraged to try to correct the interference by one or more of the following measures:

- Reorient or relocate the receiving antenna.
- Increase the separation between the equipment and receiver.
- Connect the equipment into an outlet on a circuit different from that to which the receiver is connected.
- Consult the dealer or an experienced radio/TV technician for help.

This equipment complies with FCC radiation exposure limits set forth for an uncontrolled environment. This equipment should be installed and operated with minimum distance 20cm between the radiator & your body.