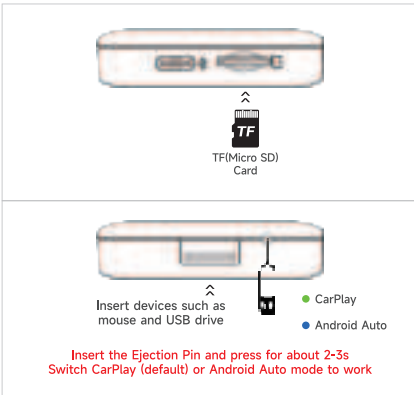


# User Manual



**Note:** Don't insert the TF card backward, the wrong way will damage the product's card slot.

## Contents

INSTRUCTION MANUAL	2
使用说明	6
BEDIENUNGSANLEITUNG	11
MODE D' EMPLOI	16
MANUALE DI ISTRUZIONI	21
MANUAL DE INSTRUCCIONES	26
ИНСТРУКЦИЯ ПО ЭКСПЛУАТАЦИИ	31
دليل التوجيهات	36
MANUAL DE INSTRUÇÕES	41
取扱説明書	46
사용 설명서	51
Kullanım Kılavuzu	56
Hướng dẫn sử dụng	61
คู่มือการใช้งาน	66
उपयोगकर्ता पुस्तिका	71

## Function Introduction

The product expands the Android system platform through the car USB interface, and realizes more audio-visual entertainment. Besides, it also supports Bluetooth/Phone/Mobile Connectivity enables wireless CarPlay and wireless Android Auto.

## Product Specification

CPU: Allwinner® A133 Quad-Core ARM Cortex™-A53 1.5GHz  
Operating System: Android 10.0 system  
System Storage: 1GB(RAM)+8GB(ROM)/2GB(RAM)+16GB(ROM)/2GB(RAM)+32GB(ROM)  
Wireless Network: 802. 11a/ b/ g/ n/ ac/ ax, 2. 4G+5G  
Bluetooth: 5.0  
Power Input: 5V 1A  
Temperature: -20°C~65°C

## Compatible cars and mobile phones

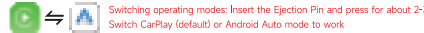
- Applicable models: The original car with wired CarPlay/Android Auto  
Specific model query: <https://www.apple.com/ioscarplay/available-models/>
- iPhone: Support iPhone 6 and above, for iOS 10 and above
- Android phone: Support Android 11.0 and above

## TF Card Slot Instruction

- TF Card Slot: Expandable up to 512GB  
(TF card is inserted with the metal face up)

## Connection Instruction

- In original car system interface (the specific interface is subject to the actual car model ), click "CarPlay"/"Android Auto" on the screen, then enter to product's Android system interface.

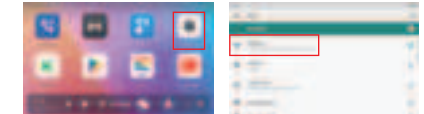


- Click on the "Bluetooth phone" icon to pair with your phone's Bluetooth, and sync your phone's contacts to the car screen.
- Click the "Settings" icon to change languages, customize wallpapers, etc.
- Click the "Home" icon to return to the original car system.



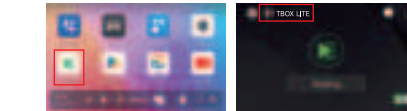
## WiFi Connection Instructions

- Turn on the mobile phone hotspot or the 4G/5G hotspot equipped with the car
- Click on Settings to enter the WLAN interface and click on the hotspot name of your phone/car
- Once successfully connected, you can use applications such as online video and online music

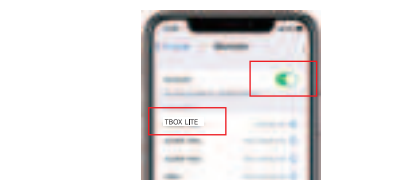


## Wireless CarPlay/Android Auto Connection Instructions

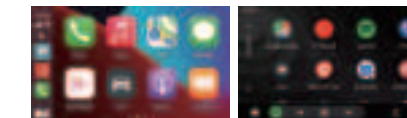
- Click the "AutoKit" icon to enter the connection interface



- Turn on the Bluetooth and WiFi of the iPhone/Android phone
- Search the bluetooth name displayed on the car screen in the bluetooth list of the mobile phone, and click pairing



- Wait for the connection to succeed, and the wireless CarPlay/Android Auto will work



## After-sales Service

Dear user, thank you for using this product. In order to protect your rights and interests, we will provide you with high-quality after-sales service. You can enjoy one-year warranty service from the date of purchase (for failure caused by the quality issue of the product itself). Please keep this card properly, as the necessary proof of warranty service, the company reserves the right to interpret the after-sales service of this product.

Warranty Card			
Name		Purchase date	
Phone number		E-Mail	
Address			
Dealer's name (stamped)			
Warranty content			



## FCC Warning

This device complies with part 15 of the FCC Rules. Operation is subject to the following two conditions:

- (1) This device may not cause harmful interference, and (2) this device must accept any interference received, including interference that may cause undesired operation.

Any Changes or modifications not expressly approved by the party responsible for compliance could void the user's authority to operate the equipment.

**Note:** This equipment has been tested and found to comply with the limits for a Class B digital device, pursuant to part 15 of the FCC Rules. These limits are designed to provide reasonable protection against harmful interference in a residential installation. This equipment generates uses and can radiate radio frequency energy and, if not installed and used in accordance with the instructions, may cause harmful interference to radio communications. However, there is no guarantee that interference will not occur in a particular installation. If this equipment does cause harmful interference to radio or television reception, which can be determined by turning the equipment off and on, the user is encouraged to try to correct the interference by one or more of the following measures:

- Reorient or relocate the receiving antenna.
- Increase the separation between the equipment and receiver.
- Connect the equipment into an outlet on a circuit different from that to which the receiver is connected.
- Consult the dealer or an experienced radio/TV technician for help.

This equipment complies with FCC radiation exposure limits set forth for an uncontrolled environment. This equipment should be installed and operated with minimum distance 20cm between the radiator & your body.