

Setting the Time and Time Zone

The Router keeps time by connecting to a Simple Network Time Protocol (SNTP) server. This allows the Router to synchronize the system clock to the global Internet. The synchronized clock in the Router is used to record the security log and control client filtering. Select the time zone that you reside in. If you reside in an area that observes daylight saving, then place a check mark in the box next to “Automatically Adjust Daylight Saving”. The system clock may not update immediately. Allow at least 15 minutes for the Router to contact the time servers on the Internet and get a response. You cannot set the clock yourself.

Time and Time Zone:	April 22, 2003 11:12:36 AM
Please set your time Zone. If you are in an area that observes daylight saving check this box. More Info	
- Time Zone >	(GMT-08:00) Pacific Time (US & Canada): Tijuana ▾
- Daylight Savings >	<input checked="" type="checkbox"/> Automatically Adjust Daylight Saving

Enabling Remote Management

Before you enable this advanced feature of your Belkin Router, **MAKE SURE YOU HAVE SET THE ADMINISTRATOR PASSWORD**. Remote management allows you to make changes to your Router's settings from anywhere on the Internet. There are two methods of remotely managing the Router. The first is to allow access to the Router from anywhere on the Internet by selecting “Any IP address can remotely manage the Router”. By typing in your WAN IP address from any computer on the Internet, you will be presented with a login screen where you need to type in the password of your Router. The second method is to allow a specific IP address only to remotely manage the Router. This is more secure, but less convenient. To use this method, enter the IP address you know you will be accessing the Router from in the space provided and select “Only this IP address can remotely manage the Router”. Before you enable this function, it is **STRONGLY RECOMMENDED** that you set your administrator password. Leaving the password empty will potentially open your Router to intrusion.

Remote Management:	
ADVANCED FEATURE! Remote management allows you to make changes to your Router's settings from anywhere on the Internet. Before you enable this function, MAKE SURE YOU HAVE SET THE ADMINISTRATOR PASSWORD . More Info	
<input type="checkbox"/> Any IP address can remotely manage the router.	
- Only this IP address can remotely manage the router>	<input type="text"/> . <input type="text"/> . <input type="text"/> . <input type="text"/>

Using the Web-Based Advanced User Interface

Enabling/Disabling NAT (Network Address Translation)

Note: This advanced feature should be employed by advanced users only. Before enabling this function, **MAKE SURE YOU HAVE SET THE ADMINISTRATOR PASSWORD.**

Network Address Translation (NAT) is the method by which the Router shares the single IP address assigned by your ISP with the other computers on your network. This function should only be used if your ISP assigns you multiple IP addresses or you need NAT disabled for an advanced system configuration. If you have a single IP address and you turn NAT off, the computers on your network will not be able to access the Internet. Other problems may also occur. Turning off NAT will disable your firewall functions.

ADVANCED FEATURE! Allows you to turn the Network Address Translation feature off. In almost every case you would NOT want to turn this feature off. [More Info](#)

- NAT Enable / Disable >

☒ Enable ☐ Disable

Enabling/Disabling UPnP

UPnP (Universal Plug-and-Play) is yet another advanced feature offered by your Belkin Router. It is a technology that offers seamless operation of voice messaging, video messaging, games, and other applications that are UPnP-compliant. Some applications require the Router's firewall to be configured in a specific way to operate properly. This usually requires opening TCP and UDP ports, and in some instances, setting trigger ports. An application that is UPnP-compliant has the ability to communicate with the Router, basically "telling" the Router which way it needs the firewall configured. The Router ships with the UPnP feature disabled. If you are using any applications that are UPnP-compliant, and wish to take advantage of the UPnP features, you can enable the UPnP feature. Simply select "Enable" in the "UPnP Enabling" section of the "Utilities" page. Click "Apply Changes" to save the change.

ADVANCED FEATURE! Allows you to turn the UPNP feature of the Router on or off. If you use applications that support UPnP, enabling UPnP will allow these applications to automatically configure the router. [More Info](#)

- UPNP Enable / Disable >

☒ Enable ☐ Disable

Using the Web-Based Advanced User Interface

Enabling/Disabling Auto Firmware Update

This innovation provides the Router with the built-in capability to automatically check for a new version of firmware and alert you that the new firmware is available. When you log into the Router's Web-Based Advanced User Interface, the Router will perform a check to see if new firmware is available. If so, you will be notified. You can choose to download the new version or ignore it. The Router ships with this feature enabled. If you want to disable it, select "Disable" and click "Apply Changes".

Auto Update Firmware Enabling:

ADVANCED FEATURE! Allows you to update firmware automatically if the Router is off. [More Info](#)

- Auto Update Firmware Enable /
Disable >

☐ Enable ☒ Disable

1

2

3

4

5

6

7

8

9

10

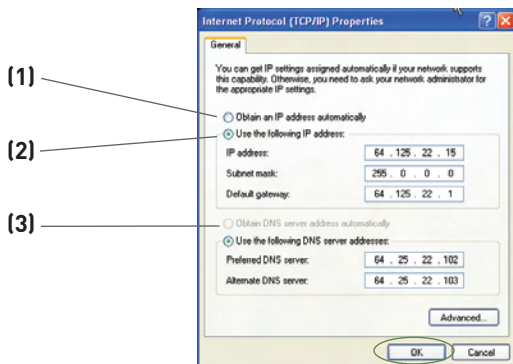
section

Manually Configuring Network Settings

In order for your computer to properly communicate with your Router, you will need to change your PC's TCP/IP settings to DHCP.

Manually Configuring Network Adapters in Windows 2000, NT, or XP

1. Click "Start", "Settings", then "Control Panel".
2. Double-click on the "Network and dial-up connections" icon (Windows 2000) or the "Network" icon (Windows XP).
3. Right-click on the "Local Area Connection" associated with your network adapter and select "Properties" from the drop-down menu.
4. In the "Local Area Connection Properties" window, click "Internet Protocol (TCP/IP)" and click the "Properties" button. The following screen will appear:



5. If "Use the following IP address" (2) is selected, your Router will need to be set up for a static IP connection type. Write the address information in the table below. You will need to enter this information into the Router.

IP address:	<input type="text"/>
Subnet Mask:	<input type="text"/>
Default gateway:	<input type="text"/>
Preferred DNS server:	<input type="text"/>
Alternate DNS server:	<input type="text"/>

6. If not already selected, select "Obtain an IP address automatically" (1) and "Obtain DNS server address automatically" (3). Click "OK".

Your network adapter(s) are now configured for use with the Router.

Manually Configuring Network Settings

1

2

3

4

5

6

7

section

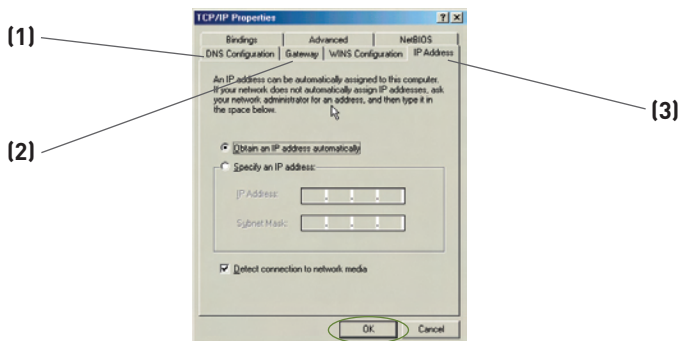
8

9

10

Manually Configuring Network Adapters in Windows 98SE or Me

1. Right-click on “My Network Neighborhood” and select “Properties” from the drop-down menu.
2. Select “TCP/IP -> settings” for your installed network adapter. You will see the following window.



3. If “Specify an IP address” is selected, your Router will need to be set up for a static IP connection type. Write the address information in the table below. You will need to enter this information into the Router.

IP address:	<input type="text"/>
Subnet Mask:	<input type="text"/>
Default gateway:	<input type="text"/>
Preferred DNS server:	<input type="text"/>
Alternate DNS server:	<input type="text"/>

4. Write in the IP address and subnet mask from the “IP Address” tab **(3)**.
5. Click the “Gateway” tab **(2)**. Write the gateway address down in the chart.
6. Click the “DNS Configuration” tab **(1)**. Write the DNS address(es) in the chart.
7. If not already selected, select “Obtain IP address automatically” in the “IP Address” tab. Click “OK”.

Restart the computer. When the computer restarts, your network adapter(s) are now configured for use with the Router.

Manually Configuring Network Settings

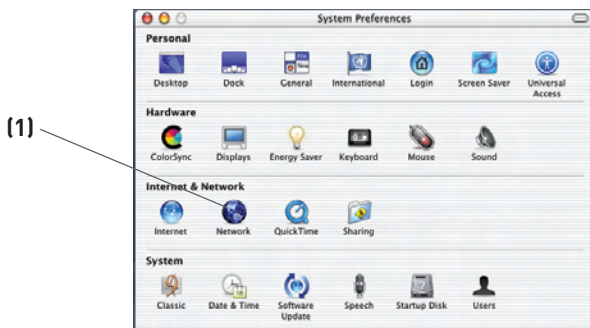
Set up the computer that is connected to the cable or DSL modem FIRST using these steps. You can also use these steps to add computers to your Router after the Router has been set up to connect to the Internet.

Manually Configuring Network Adapters in Mac OS X

1. Click on the “System Preferences” icon.

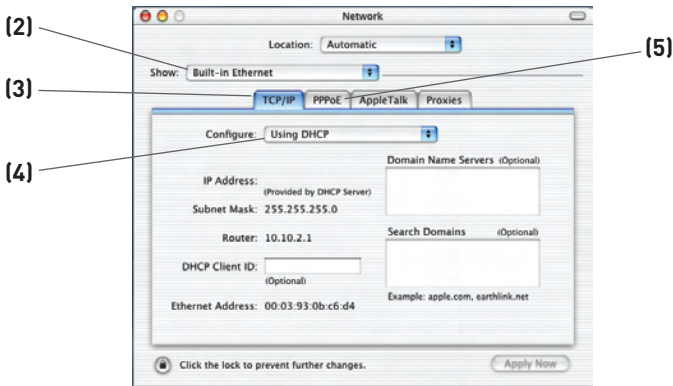


2. Select “Network” (1) from the “System Preferences” menu.



Manually Configuring Network Settings

3. Select “Built-in Ethernet” **(2)** next to “Show” in the Network menu.



4. Select the “TCP/IP” tab **(3)**. Next to “Configure:” **(4)**, you should see “Manually” or “Using DHCP”. If you do not, check the PPPoE tab **(5)** to make sure that “Connect using PPPoE” is NOT selected. If it is, you will need to configure your Router for a PPPoE connection type using your user name and password.
5. If “Manually” is selected, your Router will need to be set up for a static IP connection type. Write the address information in the table below. You will need to enter this information into the Router.

IP address:	<input type="text"/>
Subnet Mask:	<input type="text"/>
Router Address:	<input type="text"/>
Name Server Address:	<input type="text"/>

6. If not already selected, select “Using DHCP” next to “Configure:” **(4)**, then click “Apply Now”.

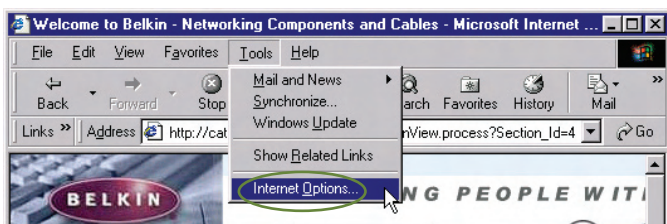
Your network adapter(s) are now configured for use with the Router.

Recommended Web Browser Settings

In most cases, you will not need to make any changes to your web browser's settings. If you are having trouble accessing the Internet or the Web-Based Advanced User Interface, then change your browser's settings to the recommended settings in this section.

Internet Explorer 4.0 or Higher

1. Start your web browser. Select "Tools" then "Internet Options".



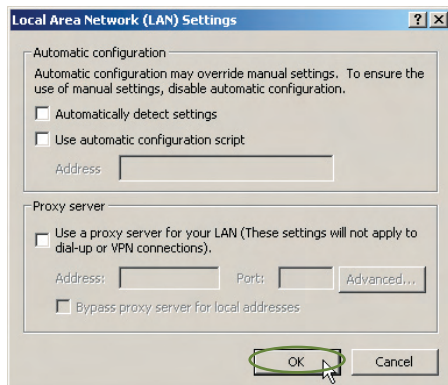
2. In the "Internet Options" screen, there are three selections: "Never dial a connection", "Dial whenever a network connection is not present", and "Always dial my default connection". If you can make a selection, select "Never dial a connection". If you cannot make a selection, go to the next step.



3. Under the "Internet Options" screen, click on "Connections" and select "LAN Settings...".

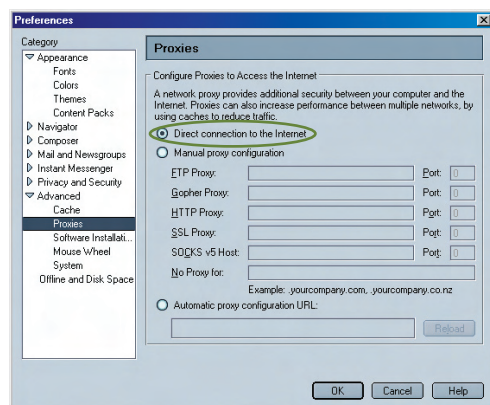
Recommended Web Browser Settings

- Make sure there are no check marks next to any of the displayed options: “Automatically detect settings”, “Use automatic configuration script”, and “Use a proxy server”. Click “OK”. Then click “OK” again in the “Internet Options” page.



Netscape® Navigator® 4.0 or Higher

- Start Netscape. Click on “Edit” then “Preferences”.
- In the “Preferences” window, click on “Advanced” then select “Proxies”. In the “Proxies” window, select “Direct connection to the Internet”.



Troubleshooting

Problem:

The Easy Install Wizard cannot find my Router.

Solution:

If the Easy Install Wizard is not able to find the Router during the installation process, please check the following items:

1. If the Easy Install Wizard is not able to find the Router during the installation process, there may be third-party firewall software installed on the computer attempting to access the Internet. Examples of third-party firewall software are ZoneAlarm, BlackICE PC Protection, McAfee Personal Firewall, and Norton Personal Firewall.

If you do have firewall software installed on your computer, please make sure that you properly configure it. You can determine if the firewall software is preventing Internet access by temporarily turning it off. If, while the firewall is disabled, Internet access works properly, you will need to change the firewall settings to function properly when it is turned on.

Please refer to the instructions provided by the publisher of your firewall software for instructions on configuring the firewall to allow Internet access.

2. Unplug power to the Router for 10 seconds, and then plug the power back into the Router. Ensure that the Router's Power light is on; it should be solid green. If not, check to make sure that the AC adapter is correctly connected to the Router and plugged into a wall outlet.
3. Ensure that you have a cable (use the cable included with the Router) connected between (1) the network (Ethernet) port on the back of the computer and (2) one of the LAN ports, labeled "1" through "4", on the back of the Router.

Note: The computer should NOT be connected to the port labeled "Internet/WAN" on the back of the Router.

4. Try shutting down and restarting your computer, then rerunning the Easy Install Wizard.

If the Easy Install Wizard is still unable to find the Router, reference the section titled "Manually Configuring Network Settings" for installation steps.

1

2

3

4

5

6

7

8

9

10

section

Troubleshooting

Problem:

The Easy Install Wizard cannot connect my Router to the Internet.

Solution:

If the Easy Install Wizard is not able to connect the Router to the Internet, please check the following items:

1. Use the troubleshooting suggestions within the Easy Install Wizard. If the troubleshooting screen does not open automatically, click on the “Troubleshoot” button in the lower, right-hand corner of the Easy Install Wizard window.
2. If your ISP requires a user name and password, make sure that you have typed in your user name and password correctly. Some user names require that the ISP’s domain be at the end of the name. Example: “myname@myisp.com”. The “@myisp.com” part of the user name may need to be typed as well as your user name.

If you continue to have no Internet connection, reference the section titled “Manually Configuring Network Settings” (page 84 of this User Manual) for an alternate setup method.

Problem:

- The Easy Install Wizard completed installation, but my web browser doesn’t work.
- I am unable to connect to the Internet. The Router’s “WAN” light is off and the “Connected” light is blinking.

Solution:

If you cannot connect to the Internet, the “WAN” light is off, and the “Connected” light is blinking, the problem may be that your modem and Router are not connected properly.

1. Make sure the network cable between the modem and the Router is connected. We strongly recommend using the cable that was supplied with your cable or DSL modem for this purpose. The cable should be connected at one end to the Router’s “Internet/WAN” port, and at the other end to the network port on your modem.
2. Unplug the cable or DSL modem from its power source for three minutes. After three minutes, plug the modem back into its

power source. This may force the modem to properly recognize the Router.

3. Unplug the power to your Router, wait 10 seconds, and then reconnect the power. This will cause the Router to reattempt communication with the modem.

If the “WAN” light on the Router is not lit after completing these steps, please contact Belkin Technical Support.

4. Try shutting down and restarting your computer.

Problem:

- The Easy Install Wizard completed installation, but my web browser doesn't work.
- I am unable to connect to the Internet. The Router's “WAN” light is on and the “Connected” light is blinking.

Solution:

If you cannot connect to the Internet, the “WAN” light is on, and the “Connected” light is blinking, the problem may be that your connection type may not match the ISP's connection.

- If you have a “static IP address” connection, your ISP must assign you the IP address, subnet mask, and gateway address. Please refer to the section entitled “Alternate Setup Method” for details on changing this setting.
- If you have a “PPPoE” connection, your ISP will assign you a user name and password and sometimes a service name. Make sure the Router connection type is configured to PPPoE and the settings are entered properly. Please refer to the section entitled “Alternate Setup Method” for details on changing this setting.
- You may need to configure your Router to meet the specific requirements of your ISP. To search our Knowledge Base for ISP-specific issues, go to: <http://web.belkin.com/support> and type in “ISP”.

If you are still unable to access the Internet after verifying these settings, please contact Belkin Technical Support.

1

2

3

4

5

6

7

8

9

10

Troubleshooting

Problem:

- The Easy Install Wizard completed, but my web browser doesn't work.
- I am unable to connect to the Internet. The "WAN" light on my Router is blinking and the "Connected" light is solid.

Solution:

If the "WAN" light is blinking and the "Connected" light is solid, but you are unable to access the Internet, there may be third-party firewall software installed on the computer attempting to access the Internet. Examples of third-party firewall software are ZoneAlarm, BlackICE PC Protection, McAfee Personal Firewall, and Norton Personal Firewall.

If you do have firewall software installed on your computer, please make sure that you properly configure it. You can determine if the firewall software is preventing Internet access by temporarily turning it off. If, while the firewall is disabled and Internet access works properly, you will need to change the firewall settings to function properly when it is turned on.

Please refer to the instructions provided by the publisher of your firewall software for instructions on configuring the firewall to allow Internet access.

If you are still unable to access the Internet after disabling any firewall software, please contact Belkin Technical Support.

Problem:

I can't connect to the Internet wirelessly.

Solution:

If you are unable to connect to the Internet from a wireless computer, please do the following:

1. Look at the lights on your Router. Your Belkin Router's lights should be as follows:
 - The "Power" light should be on.
 - The "Connected" light should be on and not blinking.
 - The "WAN" light should be either on or blinking.

-
2. Open your wireless utility software by clicking on the icon in the system tray at the bottom, right-hand corner of the screen. If you are also using a Belkin Wireless Card or Adapter with this Router, the tray icon should look like this (the icon may be red or green):



-
-
3. The exact window that opens will vary depending on the model of wireless card you have; however, any of the utilities should have a list of “Available Networks”—those wireless networks it can connect to.

Does the name of your wireless network appear in the results?

Yes, my network name is listed—go to the troubleshooting solution titled “I can’t connect to the Internet wirelessly, but my network name is listed”.

No, my network name is not listed—go to the troubleshooting solution titled “I can’t connect to the Internet wirelessly, and my network name is not listed”.

1

2

3

4

5

6

7

8

9

10

section

Troubleshooting

Problem:

I can't connect to the Internet wirelessly, but my network name is listed.

Solution:

If the name of your network is listed in the "Available Networks" list, please follow the steps below to connect wirelessly:

1. Click on the correct network name in the "Available Networks" list.
2. If the network has security (encryption) enabled, you will need to enter the network key. For more information regarding security, see the section entitled "Securing your Wi-Fi Network" in this User Manual.
3. Within a few seconds, the tray icon in the lower, left-hand corner of your screen should turn green, indicating a successful connection to the network.

Problem:

I can't connect to the Internet wirelessly, and my network name is not listed.

Solution:

If the correct network name is not listed under "Available Networks" in the wireless configuration utility, please attempt the following troubleshooting steps:

1. Temporarily move your computer, if possible, five to 10 feet away from the Router. Close the wireless configuration utility, and reopen it. If the correct network name now appears under "Available Networks", you may have a range or interference problem. Please see the suggestions discussed in the section titled "Placement of your Router for Optimal Performance" in this User Manual.
2. Using a computer that is connected to the Router through a network cable (as opposed to wirelessly), ensure that "Broadcast SSID" is enabled. This setting is found on the Router's wireless "Channel and SSID" configuration page.

If you are still unable to access the Internet after completing these steps, please contact Belkin Technical Support.

Problem:

My wireless network performance is inconsistent.

Data transfer is sometimes slow.

Signal strength is poor.

I am having difficulty establishing and/or maintaining a Virtual Private Network (VPN) connection.

Solution:

Wireless technology is radio-based, which means connectivity and the throughput performance between devices decreases when the distance between devices increases. Other factors that will cause signal degradation (metal is generally the worst culprit) are obstructions such as walls and metal appliances. As a result, the typical indoor range of your wireless devices will be between 100 to 200 feet. Note also that connection speed may decrease as you move farther away from the Router or access point.

In order to determine if wireless issues are related to range, we suggest temporarily moving the computer, if possible, five to 10 feet away from the Router.

Changing the Wireless Channel - Depending on local wireless traffic and interference, switching the wireless channel of your network can improve performance and reliability. The default channel the Router is shipped with is channel 11. You may choose from several other channels depending on your region (see the section titled “Changing the Wireless Channel” on page 47 for instructions on how to choose other channels).

Limiting the Wireless Transmit Rate - Limiting the wireless transmit rate can help improve the maximum wireless range and connection stability. Most wireless cards have the ability to limit the transmission rate. To change this property, go to the Windows Control Panel, open “Network Connections” and double-click on your wireless card’s connection. In the “Properties” dialog, select the “Configure” button on the “General” tab (Windows 98 users will have to select the wireless card in the list box and then click “Properties”), then choose the “Advanced” tab and select the rate property. Wireless client cards are usually set to automatically adjust the wireless transmit rate for you, but doing so can cause periodic disconnects when the wireless signal is too weak; as a rule, slower transmission rates are more stable. Experiment with different connection rates until you find the best one for your environment;

1

2

3

4

5

6

7

8

9

10

section

Troubleshooting

note that all available transmission rates should be acceptable for browsing the Internet. For more assistance, see your wireless card's user manual.

Problem:

How do I extend the range of my wireless network?

Solution:

Belkin recommends using one of the following products to extend wireless network coverage throughout large homes or offices:

- **Wireless Access Point:** A wireless access point can effectively double the coverage area of your wireless network. An access point is typically placed in the area not currently covered by your Wireless G Plus Router, and is connected to the Router using either an Ethernet cable or through your home's power lines using two Powerline Ethernet Adapters.
- For 802.11g (54g) wireless networks, Belkin offers a Wireless G Range Extender/Access Point that can be connected wirelessly to a Belkin Wireless G Plus Router, without requiring an Ethernet cable or Powerline Ethernet Adapters.

These Belkin products are available at your local retailer, or can be ordered from Belkin directly.

For network/range extension information, please visit:
www.belkin.com/networking to find out more about:

Wireless G Range Extender/Access Point (F5D7130)

Powerline Ethernet Adapter (F5D4070)

Powerline USB Adapter (F5D4050)

Problem:

I am having difficulty setting up Wired Equivalent Privacy (WEP) security on a Belkin Wireless Router or Belkin Access Point.

Solution:

1. Log into your Wireless Router or Access Point.

Open your web browser and type in the IP address of the Wireless Router or Access Point. (The Router's default is 192.168.2.1, the Access Point's default is 192.168.2.254.) Log into your Router by clicking on the "Login" button in the top, right-hand corner of the screen. You will be asked to enter your password. If you never set a password, leave the password field blank and click "Submit".

Click the "Wireless" tab on the left of your screen. Select the "Encryption" or "Security" tab to get to the security settings page.

2. Select "128-bit WEP" from the drop-down menu.
3. After selecting your WEP encryption mode, you can type in your hex WEP key manually, or you can type in a passphrase in the "Passphrase" field and click "Generate" to create a WEP key from the passphrase. Click "Apply Changes" to finish. You must now set all of your clients to match these settings. A hex (hexadecimal) key is a combination of numbers and letters from A—F and 0—9. For 128-bit WEP, you need to enter 26 hex keys.

For example:

C3 03 0F AF 4B B2 C3 D4 4B C3 D4 E7 E4 = 128-bit key

4. Click "Apply Changes" to finish. Encryption in the Wireless Router is now set. Each of your computers on your wireless network will now need to be configured with the same security settings.

WARNING: If you are configuring the Wireless Router or Access Point from a computer with a wireless client, you will need to ensure that security is turned on for this wireless client. If this is not done, you will lose your wireless connection.

Note to Mac users: Original Apple AirPort products support 64-bit encryption only. Apple AirPort 2 products can support 64-bit or 128-bit encryption. Please check your Apple AirPort product to see which version you are using. If you cannot configure your network with 128-bit encryption, try 64-bit encryption.

1

2

3

4

5

6

7

8

9

10

section

Troubleshooting

Problem:

I am having difficulty setting up Wired Equivalent Privacy (WEP) security on a Belkin client card (Wireless Network Card or Adapter).

Solution:

The client card must use the same key as the Wireless G Plus Router. For instance, if your Wireless Router or access point uses the key 00112233445566778899AABBCC, then the client card must be set to the exact same key.

1. Double-click the “Signal Indicator” icon to bring up the “Wireless Network Utility” screen. The “Advanced” button will allow you to view and configure more options of your client card.
2. Once the “Advanced” button is clicked, the Belkin Wireless LAN Utility will appear. This Utility will allow you to manage all the advanced features of the Belkin client card.
3. Under the “Wireless Network Properties” tab, select a network name from the “Available Networks” list and click the “Properties” button.
4. Under “Data Encryption”, select “WEP”.
5. Ensure the box “The key is provided for me automatically” at the bottom is unchecked. If you are using this computer to connect to a corporate network, please consult your network administrator if this box needs to be checked.
6. Type your WEP key in the “Network key” box.

Important: A WEP key is a combination of numbers and letters from A–F and 0–9.

7. For 128-bit WEP, you need to enter 26 keys. This network key needs to match the key you assign to your Wireless G Plus Router.

For example:

C3 03 0F AF 4B B2 C3 D4 4B C3 D4 E7 E4 = 128-bit key

8. Click “OK”, and then “Apply” to save the settings.

If you are NOT using a Belkin wireless client card, please consult the manufacturer’s user manual for that wireless client card.

Problem:

Do Belkin products support WPA?

Solution:

Note: To use WPA security, all your clients must be upgraded to drivers and software that support it. At the time of this publication, a security patch download is available, for free, from Microsoft. This patch works only with the Windows XP operating system.

Download the patch here:

[http://www.microsoft.com/downloads/details.](http://www.microsoft.com/downloads/details.aspx?FamilyID=009d8425-ce2b-47a4-abec-274845dc9e91&displaylang=en)

[aspx?FamilyID=009d8425-ce2b-47a4-abec-274845dc9e91&displaylang=en](http://www.microsoft.com/downloads/details.aspx?FamilyID=009d8425-ce2b-47a4-abec-274845dc9e91&displaylang=en)

You also need to download the latest driver for your Belkin Wireless 802.11g Desktop or Notebook Network Card from the Belkin support site. Other operating systems are not supported at this time. Microsoft's patch only supports devices with WPA-enabled drivers such as Belkin 802.11g products.

Download the latest driver at <http://web.belkin.com/support> for the following products:

F5D7000, F5D7001, F5D7010, F5D7011, F5D7230-4,
F5D7231-4, F5D7130

Troubleshooting

Problem:

I am having difficulty setting up Wi-Fi Protected Access (WPA) security on a Belkin Wireless Router or Belkin Access Point for a home network.

Solution:

1. From the “Security Mode” drop-down menu, select “WPA-PSK (no server)”.
2. For “Encryption Technique”, select “TKIP” or “AES”. This setting will have to be identical on the clients that you set up.
3. Enter your pre-shared key. This can be from eight to 63 characters and can be letters, numbers, symbols, or spaces. This same key must be used on all of the clients that you set up. For example, your PSK might be something like: “Smith family network key”.
4. Click “Apply Changes” to finish. You must now set all clients to match these settings.

Problem:

I am having difficulty setting up Wi-Fi Protected Access (WPA) security on a Belkin client card (Wireless Network Card or Adapter) for a home network.

Solution:

Clients must use the same key that the Wireless G Plus Router uses. For instance, if the key is “Smith Family Network Key” in the Wireless G Plus Router, the clients must also use that same key.

1. Double-click the “Signal Indicator” icon to bring up the “Wireless Network Utility” screen. The “Advanced” button will allow you to view and configure more options of your client card.
2. Once the “Advanced” button is clicked, the Belkin Wireless LAN Utility will appear. This Utility will allow you to manage all the advanced features of the Belkin client card.
3. Under the “Wireless Network Properties” tab, select a network name from the “Available Networks” list and click the “Properties” button.
4. Under “Network Authentication”, select “WPA-PSK (no server)”.
5. Type your WPA key in the “Network key” box.
Important: WPA-PSK is a combination of numbers and letters from A-Z and 0-9. For WPA-PSK, you can enter eight to 63 characters. This network key needs to match the key you assign to your Wireless G Plus Router.
6. Click “OK”, then “Apply” to save the settings.

1

2

3

4

5

6

7

8

9

10

section

Troubleshooting

Problem:

I am having difficulty setting up Wi-Fi Protected Access (WPA) security on a Belkin client card (Wireless Network Card or Adapter) for a business.

Solution:

1. Double-click the “Signal Indicator” icon to bring up the “Wireless Network Utility” screen. The “Advanced” button will allow you to view and configure more options of your client card.
2. Once the “Advanced” button is clicked, the Belkin Wireless LAN Utility will appear. This Utility will allow you to manage all the advanced features of the Belkin client card.
3. Under the “Wireless Network Properties” tab, select a network name from the “Available Networks” list and click the “Properties” button.
4. Under “Network Authentication”, select “WPA”.
5. In the “Authentication” tab, select the settings that are indicated by your network administrator.
6. Click “OK”, then “Apply” to save the settings.

Problem:

I am having difficulty setting up Wi-Fi Protected Access (WPA) security and I am NOT using a Belkin client card for a home network.

Solution:

If you are NOT using a Belkin WPA Wireless Desktop or Wireless Notebook Network Card and it is not equipped with WPA-enabled software, a file from Microsoft called “Windows XP Support Patch for Wireless Protected Access” is available for free download:

<http://www.microsoft.com/downloads/search.aspx?displaylang=en>

Note: The file that Microsoft has made available works only with Windows XP. Other operating systems are not supported at this time. You also need to ensure that the wireless card manufacturer supports WPA and that you have downloaded and installed the latest driver from their support site.

Supported Operating Systems:

- Windows XP Professional
- Windows XP Home Edition

Enabling WPA-PSK (no server)

1. In systems running Windows XP, click “Start > Control Panel > Network Connections”.
2. Right-click on the “Wireless Networks” tab. The “Wireless Network Connection Properties” screen appears. Ensure the “Use Windows to configure my wireless network settings” box is checked.
3. Under the “Wireless Networks” tab, click the “Configure” button, and you will see the client card properties screen.
4. For a home or small business user, select “WPA-PSK” under “Network Administration”.
5. Select “TKIP” or “AES” under “Data Encryption”. This setting will have to be identical to the Wireless G Plus Router that you set up.
6. Type in your encryption key in the “Network key” box.
Important: Enter your pre-shared key. This can be from eight to 63 characters and can be letters, numbers, or symbols. This same key must be used on all of the clients that you set up.
7. Click “OK” to apply settings.

1

2

3

4

5

6

7

8

9

10

section

What's the difference between 802.11b, 802.11g, G Plus, G Plus MIMO, and Pre-N?

Currently there are four levels of wireless networking standards, which transmit data at very different maximum speeds. Each is based on the designation for certifying network standards. The most common wireless networking standard, 802.11b, transmits information at 11Mbps; 802.11g works at 54Mbps; G Plus, G Plus MIMO, and Pre-N work at 108Mbps. Pre-N, the precursor to the upcoming 802.11n release, promises speeds that exceed 802.11g, and up to twice the wireless coverage area. See the following chart for more detailed information.

Wireless Comparison Chart

Wireless Technology	802.11b	G (802.11g)	G Plus (802.11g with HSM)	G Plus MIMO (802.11g with MIMO MRC)	Belkin Pre-N (802.11g with True MIMO)
Speed*	11Mbps link rate/baseline	5x faster than 802.11b*	10x faster than 802.11b*	10x faster than 802.11b*	15x faster than 802.11b*
Frequency	Common household devices such as cordless phones and microwave ovens may interfere with the unlicensed band 2.4GHz	Common household devices such as cordless phones and microwave ovens may interfere with the unlicensed band 2.4GHz	Common household devices such as cordless phones and microwave ovens may interfere with the unlicensed band 2.4GHz	Common household devices such as cordless phones and microwave ovens may interfere with the unlicensed band 2.4GHz	Common household devices such as cordless phones and microwave ovens may interfere with the unlicensed band 2.4GHz
Compatibility	Compatible with 802.11g	Compatible with 802.11b/g	Compatible with 802.11b/g	Compatible with 802.11b/g	Compatible with 802.11g or 802.11b
Coverage*	Typically 100–200 ft. indoors	Up to 400 ft.*	Up to 700 ft.*	Up to 1,000 ft.*	Up to 1,400 ft.*
Advantage	Mature—legacy technology	Common—widespread use for Internet sharing	Enhanced speed and coverage	Better coverage and consistent speed at range	Leading edge—best coverage and throughput

*Distance and connection speeds will vary depending on your networking environment.

1

2

3

4

5

6

7

8

9

10

section

Troubleshooting

Technical Support

You can find technical support information at:

<http://www.belkin.com/networking> or **www.belkin.com** through the tech support area. If you want to contact technical support by phone, please call:

US: 877-736-5771 or
310-898-1100 ext. 2263

Europe: 00 800 223 55 460

Australia: 1800 235 546

New Zealand: 0800 235 546

Singapore: 800 616 1790

FCC Statement

DECLARATION OF CONFORMITY WITH FCC RULES FOR ELECTROMAGNETIC COMPATIBILITY

We, Belkin Corporation, of 501 West Walnut Street,
Compton, CA 90220, declare under our sole
responsibility that the product,

F5D7231-4

to which this declaration relates,
complies with Part 15 of the FCC Rules. Operation is
subject to the following two conditions: (1) this device
may not cause harmful interference, and (2) this device
must accept any interference received, including
interference that may cause undesired operation.

Caution: Exposure to Radio Frequency Radiation.

The radiated output power of this device is far below the FCC radio frequency exposure limits. Nevertheless, the device shall be used in such a manner that the potential for human contact during normal operation is minimized.

When connecting an external antenna to the device, the antenna shall be placed in such a manner to minimize the potential for human contact during normal operation. In order to avoid the possibility of exceeding the FCC radio frequency exposure limits, human proximity to the antenna shall not be less than 20cm (8 inches) during normal operation.

Federal Communications Commission Notice

This equipment has been tested and found to comply with the limits for a Class B digital device, pursuant to Part 15 of the FCC Rules. These limits are designed to provide reasonable protection against harmful interference in a residential installation.

This equipment generates, uses, and can radiate radio frequency energy. If this equipment does cause harmful interference to radio or television reception, which can be determined by turning the equipment off and on, the user is encouraged to try and correct the interference by one or more of the following measures:

1

2

3

4

5

6

7

8

9

10

section

Information

- Reorient or relocate the receiving antenna.
- Increase the distance between the equipment and the receiver.
- Connect the equipment to an outlet on a circuit different from that to which the receiver is connected.
- Consult the dealer or an experienced radio/TV technician for help.

Modifications

The FCC requires the user to be notified that any changes or modifications to this device that are not expressly approved by Belkin Corporation may void the user's authority to operate the equipment.

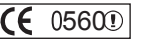
Canada-Industry Canada (IC)

The wireless radio of this device complies with RSS 139 & RSS 210 Industry Canada. This Class B digital apparatus complies with Canadian ICES-003.

Cet appareil numérique de la classe B conforme à la norme NMB-003 du Canada.

Europe-European Union Notice

Radio products with the CE 0560 or CE alert marking comply with the R&TTE Directive (1995/5/EC) issued by the Commission of the European Community.



Compliance with this directive implies conformity to the following European Norms (in brackets are the equivalent international standards).

- EN 60950 (IEC60950) - Product Safety
- EN 300 328 Technical requirement for radio equipment
- ETS 300 826 General EMC requirements for radio equipment



To determine the type of transmitter, check the identification label on your Belkin product.

Products with the CE marking comply with the EMC Directive (89/336/EEC) and the Low Voltage Directive (72/23/EEC) issued by the Commission of the European Community. Compliance with these directives implies conformity to the following European Norms (in brackets are the equivalent international standards).

- EN 55022 (CISPR 22) - Electromagnetic Interference
- EN 55024 (IEC61000-4-2,3,4,5,6,8,11) - Electromagnetic Immunity
- EN 61000-3-2 (IEC61000-3-2) - Power Line Harmonics
- EN 61000-3-3 (IEC61000) - Power Line Flicker
- EN 60950 (IEC60950) - Product Safety



Products that contain the radio transmitter are labeled with CE 0560 or CE alert marking and may also carry the CE logo.

Belkin Corporation Limited Lifetime Product Warranty

What this warranty covers.

Belkin Corporation warrants to the original purchaser of this Belkin product that the product shall be free of defects in design, assembly, material, or workmanship.

What the period of coverage is.

Belkin Corporation warrants the Belkin product for the lifetime of the product.

What will we do to correct problems?

Product Warranty.

Belkin will repair or replace, at its option, any defective product free of charge (except for shipping charges for the product).

What is not covered by this warranty?

All above warranties are null and void if the Belkin product is not provided to Belkin Corporation for inspection upon Belkin's request at the sole expense of the purchaser, or if Belkin Corporation determines that the Belkin product has been improperly installed, altered in any way, or tampered with. The Belkin Product Warranty does not protect against acts of God (other than lightning) such as flood, earthquake, war, vandalism, theft, normal-use wear and tear, erosion, depletion, obsolescence, abuse, damage due to low voltage disturbances (i.e. brownouts or sags), non-authorized program, or system equipment modification or alteration.

How to get service.

To get service for your Belkin product you must take the following steps:

1. Contact Belkin Corporation at 501 W. Walnut St., Compton CA 90220, Attn: Customer Service, or call (800)-223-5546, within 15 days of the Occurrence. Be prepared to provide the following information:
 - a. The part number of the Belkin product.
 - b. Where you purchased the product.
 - c. When you purchased the product.
 - d. Copy of original receipt.
2. Your Belkin Customer Service Representative will then instruct you on how to forward your receipt and Belkin product and how to proceed with your claim.

Belkin Corporation reserves the right to review the damaged Belkin product. All costs of shipping the Belkin product to Belkin Corporation for inspection shall be borne solely by the purchaser. If Belkin determines, in its sole discretion, that it is impractical to ship the damaged equipment to Belkin Corporation, Belkin may designate, in its sole discretion, an equipment repair facility to inspect and estimate the cost to repair such equipment. The cost, if any, of shipping the equipment to and from such repair facility and of such estimate shall be borne solely by the purchaser. Damaged equipment must remain available for inspection until the claim is finalized. Whenever claims are settled, Belkin Corporation reserves the right to be subrogated under any existing insurance policies the purchaser may have.

How state law relates to the warranty.

THIS WARRANTY CONTAINS THE SOLE WARRANTY OF BELKIN CORPORATION, THERE ARE NO OTHER WARRANTIES, EXPRESSED OR, EXCEPT AS REQUIRED BY LAW, IMPLIED, INCLUDING THE IMPLIED WARRANTY OR CONDITION OF QUALITY, MERCHANTABILITY OR FITNESS FOR A PARTICULAR PURPOSE, AND SUCH IMPLIED WARRANTIES, IF ANY, ARE LIMITED IN DURATION TO THE TERM OF THIS WARRANTY.

Some states do not allow limitations on how long an implied warranty lasts, so the above limitations may not apply to you.

IN NO EVENT SHALL BELKIN CORPORATION BE LIABLE FOR INCIDENTAL, SPECIAL, DIRECT, INDIRECT, CONSEQUENTIAL OR MULTIPLE DAMAGES SUCH AS, BUT NOT LIMITED TO, LOST BUSINESS OR PROFITS ARISING OUT OF THE SALE OR USE OF ANY BELKIN PRODUCT, EVEN IF ADVISED OF THE POSSIBILITY OF SUCH DAMAGES.

This warranty gives you specific legal rights, and you may also have other rights, which may vary from state to state. Some states do not allow the exclusion or limitation of incidental, consequential, or other damages, so the above limitations may not apply to you.

1

2

3

4

5

6

7

8

9

10 section