



C01 (Compactor Camera) Installation & Setup Guide

Tools you'll need:

- Cordless drill (recommended: Power rating of at least 12V)
- 3/16" drill bit
- 1 3/4" (44mm) hole saw
- Bracket Placement Spacer (Provided PN 190-0035)
- Riveter (rated to be able to pop 3/16 stainless steel rivets)
- 5/32" Pin-in-Hex Security Bit
- Ladder (please follow all OSHA ladder guidelines)
- Recommended: Safety gloves and protective eyewear

Parts included:

- C01 compactor camera - PN 910-0015
- C01 bracket - PN 300-0025
- 3/16" SS Rivets - PN 220-0001
- 5/32" by 1" #10-32 Tamper resistant hex screws x4 - PN 200-0028
- Bracket Placement Spacer - PN 190-0035
- Solvent tube xml - PN 730-0007
- Solvent brush - PN 730-0008

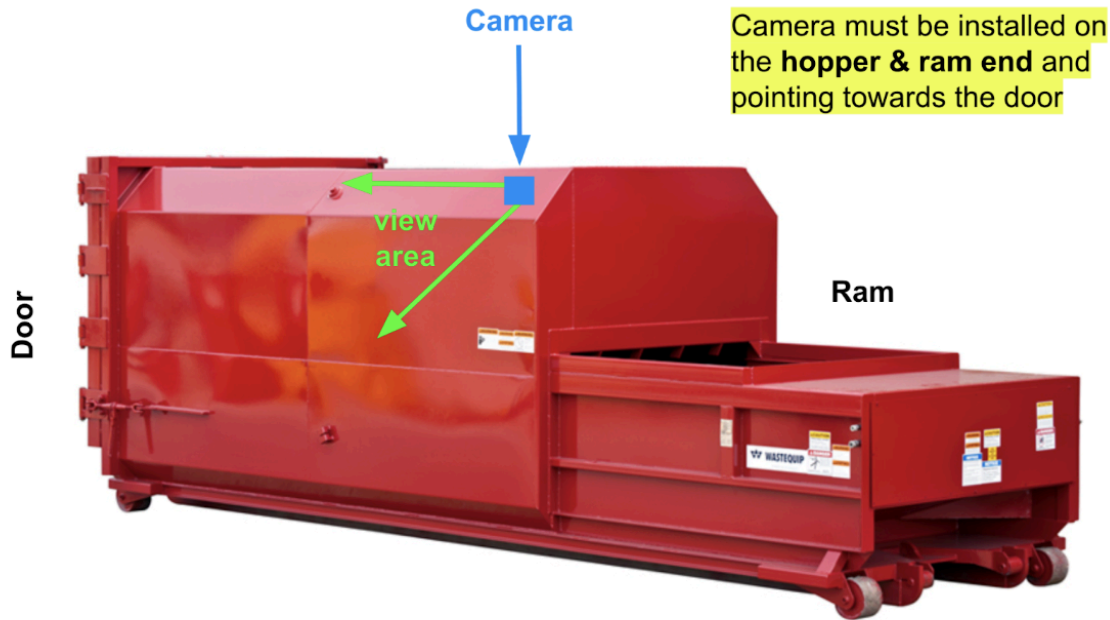
Camera placement:

Camera should be installed on the exterior of the container, close to the "ram end" looking away from the ram. The top of the bracket should be roughly 3" from the top of the container wall and 12" from the back edge of the container with the turret hole roughly 6" from the top and 18" from the back edge.

Attaching the camera:

Locate where the larger part of the container, the hopper, means the ram end. The camera will be installed on the hopper, close to the ram end looking away from the ram. Once you've identified the location to install the camera, then:

1. Locate where the larger part of the container, the hopper, means the ram end. The camera will be installed on the hopper, close to the ram end looking away from the ram.



2. Measure out the placement of the bracket so that the top of the bracket should be roughly 3" from the top of the container wall and 12" from the back edge of the container with the turret hole.



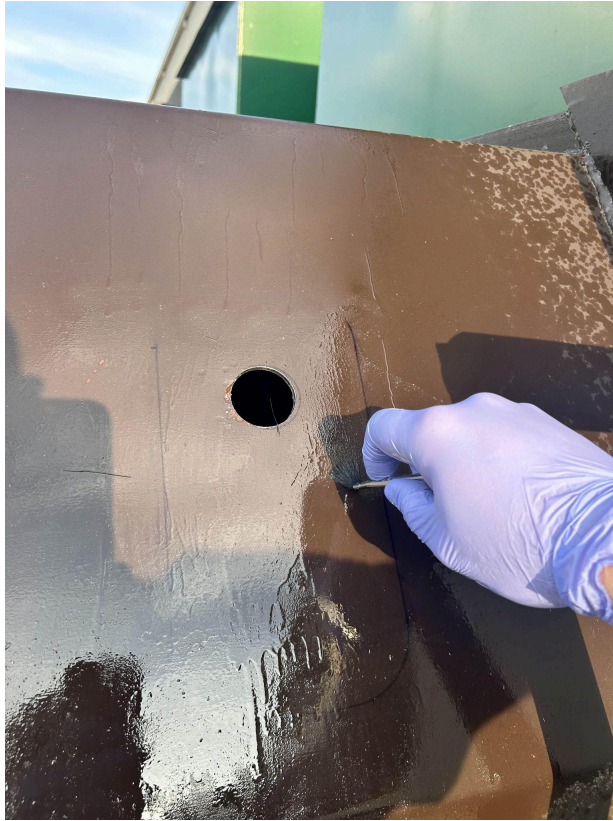
3. Drill the turret hole using the hole saw roughly 6" from the top and 18" from the back edge. This should go all the way through the Steel leaving a clean through-hole.



4. Insert the *Bracket Placement Spacer* into the hole. It should seat comfortably flat on the container surface.



5. Prepare the container surface for strong adhesive by spreading provided solvent with the provided brush. Let dry for 1-2 min before proceeding with the next step. Be very careful with solvent exposure, take all precautions according to [MSDS](#).



6. Peel the cover layer pieces off the double-stick tape on the back side of the bracket, and taking care to keep the bracket vertically oriented and the turret hole aligned over the *Bracket Placement Spacer*, press the bracket firmly against the container to set the tape.



7. Using the 3/16" drill bit, drill out the 8 rivet holes.



8. Using the rivet tool, set the 8 rivets in the holes.



9. Place the camera in the bracket and attach the 4 security screws using the 5/32" Pin-in-Hex Security Bit.



Confirming operation:

Once attached to the container, the camera operation needs to be confirmed by triggering an image via a sound activated trigger.

1. Use the [linked website](#) to generate the audio needed for triggering the camera:
2. Maximize the volume on your phone and hold the phone close to the Camera while playing the audio, ideally right near the RGB led..
3. Once triggered the RGB LED on the camera should start blinking blue. While the camera is capturing and processing data, the LED will be solid blue. Once the image capture is complete, the LED will either:
 - a. Flash Green → indicating success
 - b. Flash Yellow → indicating cell reception issue
 - c. Solid Red → indicating a failure
4. If the camera doesn't show any LED or If the camera shows a failure after triggering (red LED), please contact the RoadRunner Operations team for assistance.

Disclaimer:

NOTICE: This device complies with Part 15 of the FCC Rules and with Industry Canada licence-exempt RSS standard(s).

Operation is subject to the following two conditions:

- 1. this device may not cause harmful interference, and 2. this device must accept any interference received, including interference that may cause undesired operation.*

Le présent appareil est conforme aux CNR d'Industrie Canada applicables aux appareils radio exempts de licence. L'exploitation est autorisée aux deux conditions suivantes:

- 1. l'appareil ne doit pas produire de brouillage, et 2. l'appareil doit accepter tout brouillage radioélectrique subi, même si le brouillage est susceptible d'en compromettre le fonctionnement.*

NOTICE: Changes or modifications made to this equipment not expressly approved by Compology may void the FCC authorization to operate this equipment.

Note: This equipment has been tested and found to comply with the limits for a Class B digital device, pursuant to part 15 of the FCC Rules. These limits are designed to provide reasonable protection against harmful interference in a residential installation. This equipment generates, uses and can radiate radio frequency energy and, if not installed and used in accordance with the instructions, may cause harmful interference to radio communications. However, there is no guarantee that interference will not occur in a particular installation. If this equipment does cause harmful interference to radio or television reception, which can be determined by turning the equipment off and on, the user is encouraged to try to correct the interference by one or more of the following measures:

- Reorient or relocate the receiving antenna.
- Increase the separation between the equipment and receiver.
- Connect the equipment into an outlet on a circuit different from that to which the receiver is connected.
- Consult the dealer or an experienced radio/TV technician for help.

As in FCC / ISED RSS-102 standards, to comply with FCC RF exposure requirements for mobile transmitting devices, this device shall be installed to provide a separation distance of 20cm (~8 inches) or more from all persons

And the transmitters on this device do not transmit simultaneously.

Battery inside the unit is non-rechargeable and won't require replacement.