

Register your product online at [www.scosche.com/register](http://www.scosche.com/register)



MCQ

## MAGICMOUNT™ CHARGE

### MAGNETIC MOUNT WITH Qi WIRELESS CHARGING

#### READ INSTRUCTIONS COMPLETELY BEFORE INSTALLING THIS MOUNT KIT.

**WARNING:** Do not use the magnetic mount with any hard-drive based devices such as iPod classic, iPod video and Zune MP3 players. Use caution whenever removing or handling plastic parts of any vehicle. Unnecessary force or pressure can cause pieces to crack or break. Please use a plastic card to remove the metal plates. Remove adhesive residue with a non-abrasive cleaner.

**AIRBAG WARNING:** Do not place this pad, or any other object, on or near the airbag. In the event of deployment, objects placed on or near airbag could cause serious injury.

**Caution:** This magnetic mount is not a toy. The small magnets are harmful if swallowed. Keep away from children.



#### IMPORTANT!

DO NOT RETURN PRODUCT TO THE RETAILER

IF YOU NEED ASSISTANCE OR REPLACEMENT PARTS  
CALL US TOLL FREE: 1-800-363-4490 X1  
HOURS: MON-FRI 9AM-5:30PM (PST) SATURDAY 9AM-2PM (PST)

©2019 SCOSCHE INDUSTRIES, INC.  
1559 Pacific Ave., Orem, UT 84057, United States of America

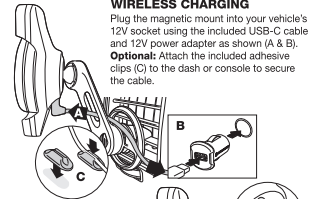
SI 300MCOVP 8/19

#### PARTS INCLUDED

- Magnetic mount with wireless charging, and vent mount with dual ball-joint adjustment
  - Large single plate with template guide for mounting to device
  - Small metal plates with template guide for mounting to case
  - Car power adapter
  - USB-C charge cable
  - Wire clips
  - Cleaning wipe
- MAGICPLATE™ LARGE PLATE** (for mounting to device)
    - MAGNETIC MOUNTING SURFACES** (top & bottom)
    - NON-MAGNETIC CHARGING AREA** (center)
  - MAGICPLATE™ SMALL METAL PLATES** (for mounting to case)
    - TEMPLATE GUIDE**
    - UPPER PLATE (A)** (new iPhone/Pixel 4)
    - UPPER PLATE (B)** (universal)
    - LOWER PLATE** (attached to template guide)
  - TEMPLATE GUIDE**
  - MAGICMOUNT™ CHARGE MAGNETIC MOUNT WITH Qi WIRELESS CHARGING**
    - MAGNETIC MOUNTING SURFACES** (top & bottom)
    - Qi WIRELESS CHARGING AREA** (center)
    - NOTE:** Design allows mounting area to rotate 360° independently of the charging area, and allows air flow between the charging area and the device
  - AMBIENT LIGHT SENSOR**
  - LED INDICATOR**
  - MAGNETIC MOUNT BALL JOINT** (for adjusting angle of device)
  - MOUNTING ARM**
  - MOUNTING ARM BALL JOINT** (allows arm to rotate 360° against vent mount)
  - VENT MOUNT WITH "FREE FLOW" VENT RING**
  - POWER ADAPTER PORT**
  - USB-C CABLE**
  - 12V CAR POWER ADAPTER** (Only use provided adapter with MAGICMOUNT™ CHARGE)
  - WIRE CLIPS** (for power adapter cable - 2 included)

**Note:** For Galaxy S8/S9+/Note 9 users, please contact Scosche Customer Service for mounting options.

2

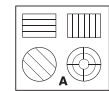


#### LED INDICATOR & AMBIENT LIGHT SENSOR

The LED indicator band around the edge of the mount (A) illuminates as shown in the chart below. The ambient light sensor (B) increases the LED's intensity in bright conditions and decreases the LED's intensity in low light conditions.

STATUS	LED
Power On	Illuminates RED, PURPLE & BLUE
Standby	OFF
Charging	BLUE
Protection Mode	Blinking RED

9



#### ATTACHING THE MOUNT TO THE VENT

Works with all vent styles (A). Rotate mount\* (B) to align vent clips (C) with vent louvers (D), according to vent direction. "Free Flow" vent ring (E) should sit flush against the vent, supporting the mount while maintaining air flow from the vent.

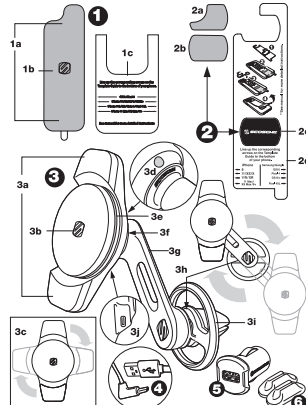
**\*Note:** Mount rotates 360°.



#### PLACING YOUR DEVICE ON THE MAGICMOUNT™ CHARGE

When placing your device on the magnetic mount, align the top & bottom magnetic surfaces on the back of your device with the top & bottom magnetic areas on the mount.

8



**SPECIFICATIONS:**  
**MAGICMOUNT™ CHARGE**  
Input: 9VDC ~ 2A, 9VDC ~ 1.67A  
Output: 10W Max.

**12V Power Adapter**  
Input: 12V  
Output: 3.6-6.5VDC ~ 3A  
6.5-9VDC ~ 2A  
9-12VDC ~ 1.5A

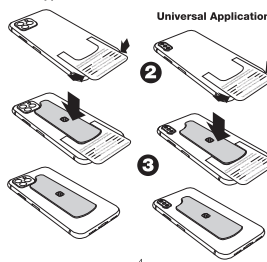
3

#### MAGICPLATE™ MOUNTING OPTIONS

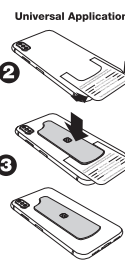
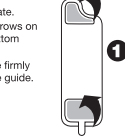
**NOTE:** For mounting directly to device, use the large single plate with template guide as shown.

- Remove backing from the plate.
- Line up the corresponding arrows on the template guide to the bottom of your phone.
- When positioned, press plate firmly to affix, and remove template guide.

#### New iPhone / Pixel 4 Application



4



#### REMOVING THE METAL PLATES

Use a thin plastic card to carefully lift the plate's adhesive surface from the mounting surface. Slowly lift up and remove the plate. Do not use any heat or liquids to remove the plate, due to risk of damaging your phone. Contact Scosche Customer Service for any additional assistance at 800-363-4490 Ext. 1 or [customerservice@scosche.com](mailto:customerservice@scosche.com).

#### MAGICMOUNT™ CHARGE TRANSMITTER PLACEMENT IN VEHICLES

It is possible for the transmitter to interfere with some wireless systems within a car. Specifically, key fobs with immobilizers, keyless start systems or tire pressure monitors. Therefore, it is recommended to test the location of your transmitter before deciding on final placement. Most interference issues will be minimized by considering the following placement guidelines:

- Install transmitter a minimum of 10 inches away from the ignition lock, key fob docking station, or any location where the key fob might be stored while driving.
- If the transmitter cannot be located a sufficient distance away as described above, please use the following suggestions whenever possible:
- Insert the key fob into the docking slot whenever possible while operating the transmitter.
- Connect the transmitter to a 12 volt accessory port that is powered only while the vehicle's ignition is in the "ACC" or "ON" position.
- Place phone on transmitter after vehicle is started.

7

#### MAGICPLATE™ MOUNTING OPTIONS (cont'd)

**NOTE:** For mounting to case, use the selected upper plate and the integrated lower plate with the template guide as shown.

#### New iPhone / Pixel 4 Application

- Remove the white paper backing from the lower plate on the template guide.
- Line up the corresponding arrows on the template guide to the bottom of your phone. Press firmly to affix the lower plate. DO NOT remove template guide.
- Select the upper plate (A) for New iPhone / Pixel 4. Remove the backing from the upper plate. Use the top of the template guide to position the plate. Press firmly to affix the upper plate.
- Remove template guide.

5

#### MAGICPLATE™ MOUNTING OPTIONS (cont'd)

**NOTE:** For mounting to case, use the selected upper plate and the integrated lower plate with the template guide as shown.

#### Universal Application

- Remove the white paper backing from the lower plate on the template guide.
- Line up the corresponding arrows on the template guide to the bottom of your phone. Press firmly to affix the lower plate. DO NOT remove template guide.
- Select the universal upper plate (B). Remove the backing from the upper plate. Use the top of the template guide to position the plate. Press firmly to affix the upper plate.
- Remove template guide.

6

#### FCC STATEMENT

This device complies with Part 15 of the FCC Rules. Operation is subject to the following two conditions: (1) This device may not cause harmful interference, and (2) this device must accept any interference received, including interference that may cause undesired operation. This transmitter must not be co-located or operating in conjunction with any other antenna or transmitter. Changes or modifications not expressly approved by the party responsible for compliance could void the user's authority to operate the equipment.

This equipment has been tested and found to comply with the limits for a Class B digital device, pursuant to Part 15 of the FCC Rules. These limits are designed to provide reasonable protection against harmful interference in a residential installation. This equipment generates uses and can radiate radio frequency energy and, if not installed and used in accordance with the instructions, may cause harmful interference to radio communications. However, there is no guarantee that interference will not occur in a particular installation. If this equipment does cause harmful interference to radio or television reception, which can be determined by turning the equipment off and on, the user is encouraged to try to correct the interference by one or more of the following measures:

- Reorient or relocate the receiving antenna.
- Increase the separation between the equipment and receiver.
- Connect the equipment into an outlet on a circuit different from that to which the receiver is connected.
- Consult the dealer or an experienced radio/TV technician for help.

Caution: Changes or modifications not expressly approved by the party responsible for compliance could void the user's authority to operate the product.

This equipment complies with FCC/IC radiation exposure limits set forth for an uncontrolled environment. This transmitter must not be co-located or operating in conjunction with any other antenna or transmitter. Ce matériel est conforme aux limites de dose d'exposition aux rayonnements FCC/IC énoncées pour un autre environnement. Cet émetteur ne doit pas être situé ou émettre conjointement avec toute autre antenne ou émetteur.

10

#### IC STATEMENT

This device contains licence-exempt transmitter(s)/receiver(s) that comply with Innovation, Science and Economic Development Canada's licence-exempt RSS(s). Operation is subject to the following two conditions:

- This device may not cause interference.
- This device must accept any interference, including interference that may cause undesired operation of the device.

L'émission/réception exempt de licence contenu dans le présent appareil est conforme aux CNR d'Innovation, Sciences et Développement économique Canada applicables aux appareils radio exempts de licence. L'exploitation est autorisée aux deux conditions suivantes:

- L'appareil ne doit pas produire de brouillage.
- L'appareil doit accepter tout brouillage radioélectrique subi, même si le brouillage est susceptible d'en compromettre le fonctionnement.

#### DOC STATEMENT

Hereby, [Scosche Industries Inc.] declares that the radio equipment type [MCQ] is in compliance with Directive 2014/53/EU. The full text of the EU declaration of conformity is available at the following internet address: [www.scosche.com](http://www.scosche.com)

#### DECLARATION FOR EU COMPLIANCE

Frequency Bands: 123.462-205.192 kHz  
Max. power transmitted: 27.15dBm/4m at 10m

For complete warranty details, please visit us at [www.scosche.com](http://www.scosche.com) or call (800) 363-4490

11