

Photo 1

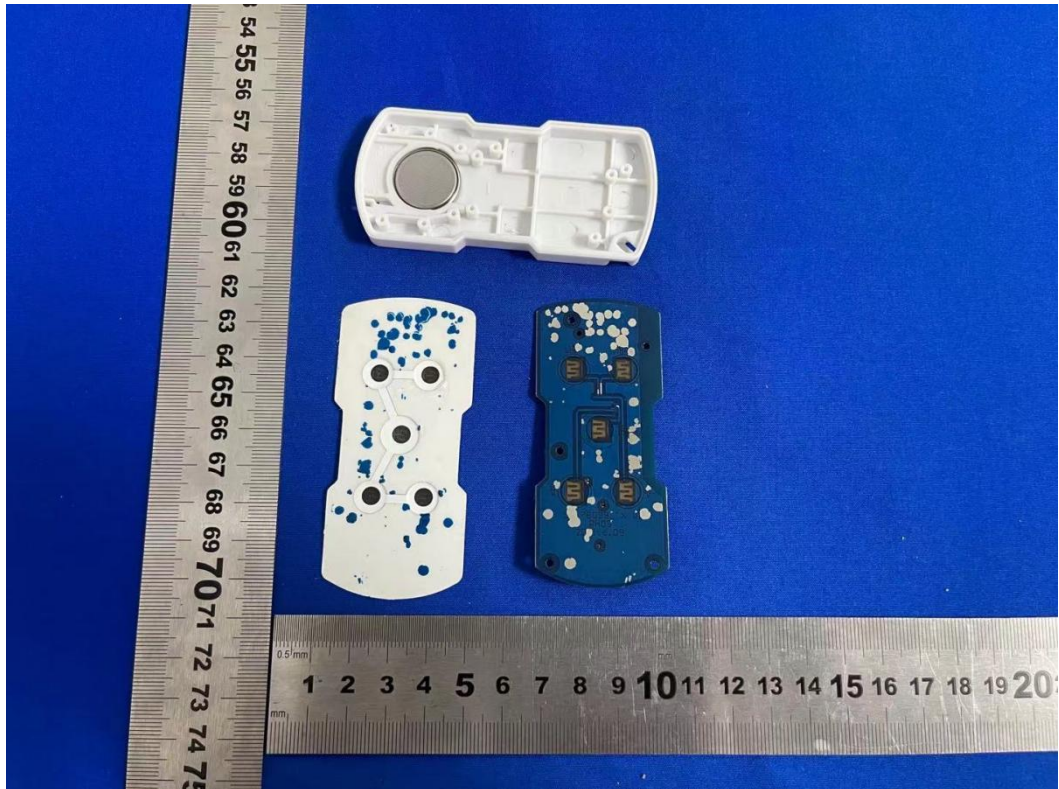
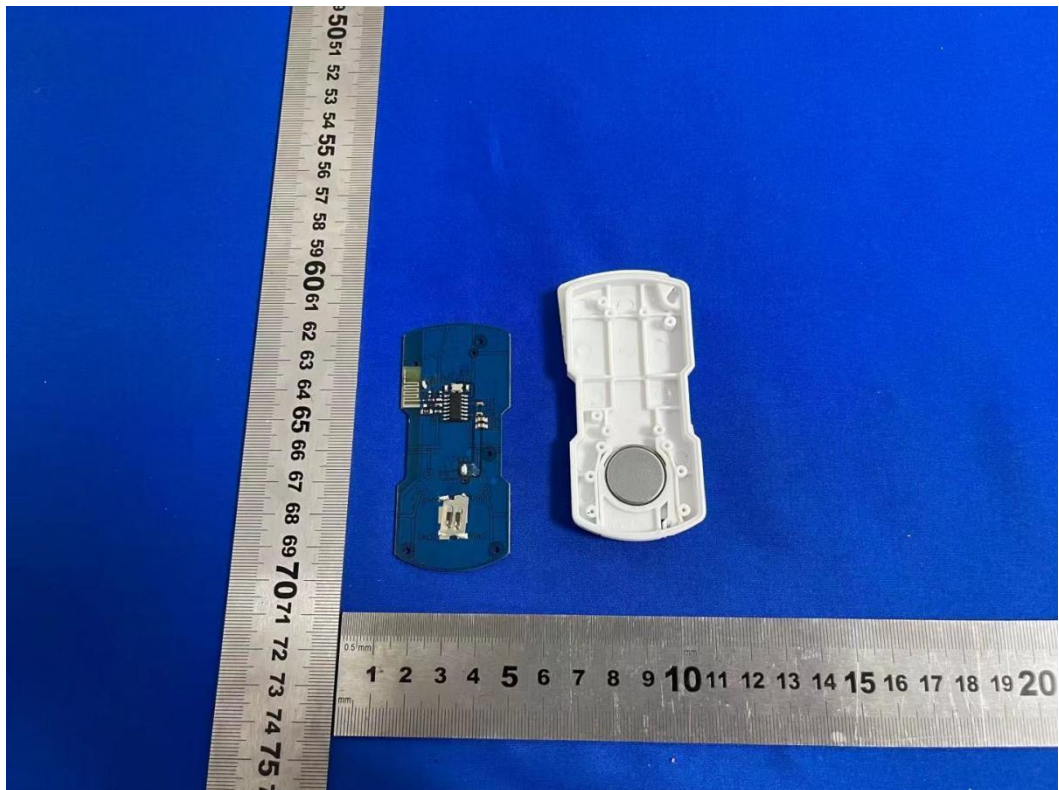


Photo 2



A blue printed circuit board (PCB) with four integrated circuits (ICs) mounted on it. The ICs are labeled 'S7809B' and '201.6-03'. The PCB has several mounting holes and a central cutout.

The image shows a custom PCB for a Raspberry Pi Zero. The board is populated with several components: a PAN2416AF antenna module, a 16MHz crystal, a 20pF capacitor, and various other passive components like resistors and capacitors. The PCB is labeled with 'GND' and 'VCC' to indicate ground and power connections. The components are mounted on a blue PCB with white silkscreen markings.

A small, circular, silver-colored lithium battery is centered on a blue textured background. The battery has the text "CR2032" at the top, the "Nite" logo in the center, and "LITHIUM BATTERY 3V" at the bottom. A small "+" sign is visible on the left side of the battery.

The image shows a custom PCB assembly for a USB HID device. The board is populated with a microcontroller (MCU), a USB connector, and various passive components. A red line points to a specific component on the board.

PCB Antenna