



# FCC Test Report

**Test Report  
On Behalf of  
Migear International Group LLC  
For  
Wireless charger**

**Model No.: FTWI600, FTW600, SS-WC001, SS-WC002, SS-WC003,  
SS-WC004, SS-WC006, FWI206  
FCC ID: 2AIDL-SS-FTWI600**

**Prepared For: Migear International Group LLC  
21 West 38th Street, 14th Floor. New York, 10018, United States**

**Prepared By: Shenzhen HUAKE Testing Technology Co., Ltd.  
1-2/F., Building B2, Junfeng Zhongcheng Zhizao Innovation Park, Heping,  
Fuhai Street, Bao'an District, Shenzhen, Guangdong, China**

**Date of Test: Apr. 25, 2023 ~ May 05, 2023**

**Date of Report: May 05, 2023**

**Report Number: HK2304251635-1E**



## Test Result Certification

**Applicant's Name**..... : Migear International Group LLC

**Address**..... : 21 West 38th Street, 14th Floor. New York, 10018, United States

**Manufacture's Name**..... : SKY SINCERITY INTERNANTIONAL CO.,LTD

**Address**..... : Flat C, 9/F Winning House, No.72-74 Wing Lok Street, Hong Kong

### Product Description

**Trade Mark** ..... : 2BOOM, FISHER

**Product Name** ..... : Wireless charger

**Model and/or Type Reference:** FTWI600, FTW600, SS-WC001, SS-WC002, SS-WC003, SS-WC004, SS-WC006, FWI206

**Standards** ..... : FCC CFR 47 PART 18

This publication may be reproduced in whole or in part for non-commercial purposes as long as the Shenzhen HUAKE Testing Technology Co., Ltd. is acknowledged as copyright owner and source of the material. Shenzhen HUAKE Testing Technology Co., Ltd. takes no responsibility for and will not assume liability for damages resulting from the reader's interpretation of the reproduced material due to its placement and context.

**Date of Test** ..... :

**Date (s) of Performance of Tests** ..... : Apr. 25, 2023 ~ May 05, 2023

**Date of Issue**..... : May 05, 2023

**Test Result**..... : Pass

**Testing Engineer** :

*Gary Qian*

(Gary Qian)

**Technical Manager** :

*Zden Hu*

(Eden Hu)

**Authorized Signatory** :

*Jason Zhou*

(Jason Zhou)

**Table of Contents****Page**

1 . Test Summary	5
1.1 . Test Procedures and Results	5
1.2 . Information of the Test Laboratory	5
1.3 . Measurement Uncertainty	5
2. General Information	6
2.1. General Description of EUT	6
2.2. Carrier Frequency of Channels	7
2.3. Operation of EUT during Testing	7
2.4. Description of Test Setup	8
2.5. Measurement Instruments List	9
3. Conducted Emission Test	10
3.1. Block Diagram of Test Setup	10
3.2. Conducted Power Line Emission Limit	10
3.3. Test Procedure	10
3.4. Test Result	11
4. Radiated Emissions	13
4.1. Block Diagram of Test Setup	13
4.2. Rules and Specifications	14
4.3. Test Procedure	14
4.4. Test Result	14
5. Antenna Requirement	18
6. Photograph of Test	19
7. Photos of the EUT	21



**\*\* Modified History \*\***

Revision	Description	Issued Data	Remark
Revision 1.0	Initial Test Report Release	May 05, 2023	Jason Zhou





## 1. Test Summary

### 1.1. Test Procedures and Results

Description of Test	Section Number	Result
Conducted Emissions Test	18.307	COMPLIANT
Radiated Emission Test	18.305	COMPLIANT

#### Note:

1. PASS: Test item meets the requirement.
2. Fail: Test item does not meet the requirement.
3. N/A: Test case does not apply to the test object.
4. The test result judgment is decided by the limit of test standard.

### 1.2. Information of the Test Laboratory

Shenzhen HUAKE Testing Technology Co., Ltd.

Add.: 1-2/F., Building B2, Junfeng Zhongcheng Zhizao Innovation Park, Heping, Fuhai Street, Bao'an District, Shenzhen, Guangdong, China

Testing Laboratory Authorization :

A2LA Accreditation Code is 4781.01.

FCC Designation Number is CN1229.

Canada IC CAB identifier is CN0045.

CNAS Registration Number is L9589.

### 1.3. Measurement Uncertainty

Measurement Uncertainty

Conducted Emission Expanded Uncertainty	= 2.71dB, k=2
Radiated emission expanded uncertainty(9kHz-30MHz)	= 3.90dB, k=2
Radiated emission expanded uncertainty(30MHz-1000MHz)	= 3.90dB, k=2
Radiated emission expanded uncertainty(Above 1GHz)	= 4.28dB, k=2



## 2. General Information

### 2.1. General Description of EUT

Production plant Name:	YICHUN SANYANG ELECTRONICS CO., LTD
Address:	Sanyang Town, Yuanzhou District, Yichun City, Jiangxi, China
Equipment:	Wireless charger
Model Name:	FTWI600
Series Models:	FTW600, SS-WC001, SS-WC002, SS-WC003, SS-WC004, SS-WC006, FWI206
Model Difference:	All model's the function, software and electric circuit are the same, only with product model named different. Test sample model: FTWI600.
Trade Mark:	2BOOM, FISHER
FCC ID:	<b>2AIDL-SS-FTWI600</b>
Antenna Type:	Coil Antenna
Antenna Gain:	0dBi
Operation Frequency:	112KHz~205KHz
Test Frequency:	120KHz
Number of Channels:	1
Modulation Type:	ASK
Power Source:	Input: 5V, 2A Output: 5V, 1A Output Power: 5W
Power Rating:	Input: 5V, 2A Output: 5V, 1A Output Power: 5W



## 2.2. Carrier Frequency of Channels

Operation Frequency each of channel	
Channel	Frequency
1	120KHz

## 2.3. Operation of EUT during Testing

Operating Mode

The mode is used: Transmitting mode



## 2.4. Description of Test Setup

Operation of EUT during Testing:



Adapter information

Model: HW-100225C00

Input: AC100-240V, 50/60Hz, 0.75A

Output: DC5V/2A, 9V/2A, 10V/2.25A MAX

The sample was placed (0.8m (30MHz~1GHz), 0.8m (9KHz~30MHz)) above the ground plane of 3m chamber. Measurements in both horizontal and vertical polarities were performed. During the test, each emission was maximized by: having the EUT continuously working, investigated all operating modes, rotated about all 3 axis (X, Y & Z) and considered typical configuration to obtain worst position, manipulating interconnecting cables, rotating the turntable, varying antenna height from 1m to 4m in both horizontal and vertical polarizations. The emissions worst-case are shown in Test Results of the following pages. The worst case is X position.



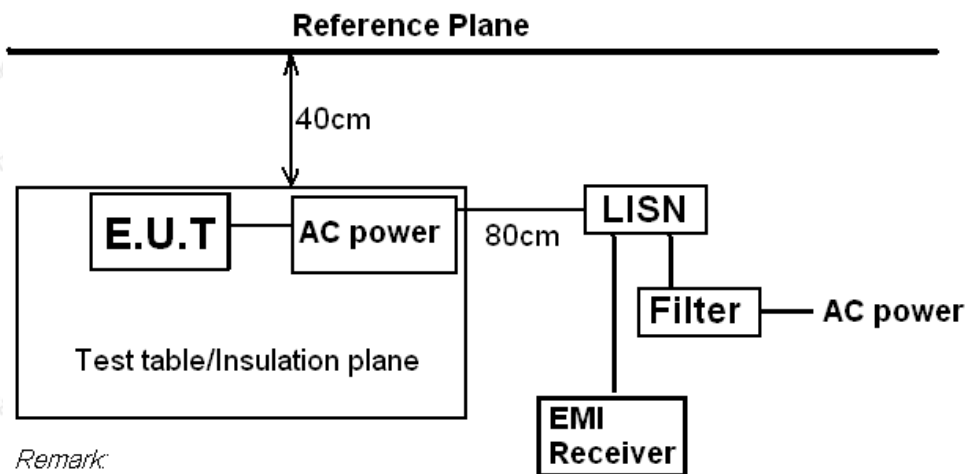
**2.5. Measurement Instruments List**

Item	Equipment	Manufacturer	Model No.	Serial No.	Last Cal.	Cal. Interval
1.	L.I.S.N. Artificial Mains Network	R&S	ENV216	HKE-002	Feb. 17, 2023	1 Year
2.	Receiver	R&S	ESR-7	HKE-005	Feb. 17, 2023	1 Year
3.	RF automatic control unit	Tonscend	JS0806-2	HKE-060	Feb. 17, 2023	1 Year
4.	Spectrum analyzer	R&S	FSP40	HKE-025	Feb. 17, 2023	1 Year
5.	Spectrum analyzer	Agilent	N9020A	HKE-048	Feb. 17, 2023	1 Year
6.	Preamplifier	Schwarzbeck	BBV 9743	HKE-006	Feb. 17, 2023	1 Year
7.	EMI Test Receiver	Rohde & Schwarz	ESR-7	HKE-010	Feb. 17, 2023	1 Year
8.	Bilog Broadband Antenna	Schwarzbeck	VULB9163	HKE-012	Feb. 17, 2023	1 Year
9.	Loop Antenna	Schwarzbeck	FMZB 1519 B	HKE-014	Feb. 17, 2023	1 Year
10.	Horn Antenna	Schwarzbeck	9120D	HKE-013	Feb. 17, 2023	1 Year
11.	Pre-amplifier	EMCI	EMC051845 SE	HKE-015	Feb. 17, 2023	1 Year
12.	Pre-amplifier	Agilent	83051A	HKE-016	Feb. 17, 2023	1 Year
13.	EMI Test Software EZ-EMC	Tonscend	JS1120-B Version	HKE-083	N/A	N/A
14.	Power Sensor	Agilent	E9300A	HKE-086	Feb. 17, 2023	1 Year
15.	Spectrum analyzer	Agilent	N9020A	HKE-048	Feb. 17, 2023	1 Year
16.	Signal generator	Agilent	N5182A	HKE-029	Feb. 17, 2023	1 Year
17.	Signal Generator	Agilent	83630A	HKE-028	Feb. 17, 2023	1 Year
18.	Shielded room	Shiel Hong	4*3*3	HKE-039	Dec. 09, 2021	3 Year



## 3. Conducted Emission Test

### 3.1. Block Diagram of Test Setup



Remark:

E.U.T: Equipment Under Test

LISN: Line Impedance Stabilization Network

Test table height=0.8m

### 3.2. Conducted Power Line Emission Limit

According to FCC Part 18.307(b)

Frequency (MHz)	Maximum RF Line Voltage (dBμV)			
	CLASS A		CLASS B	
	Q.P.	Ave.	Q.P.	Ave.
0.15 - 0.50	79	66	66-56*	56-46*
0.50 - 5.00	73	60	56	46
5.00 - 30.0	73	60	60	50

\* Decreasing linearly with the logarithm of the frequency

For intentional device, according to §18.307 Line Conducted Emission Limit is same as above table.

### 3.3. Test Procedure

1. The equipment was set up as per the test configuration to simulate typical actual usage per the user's manual. The EUT is a tabletop system, a wooden table with a height of 0.8 meters is used and is placed on the ground plane as per ANSI C63.10.
2. Support equipment, if needed, was placed as per ANSI C63.10.
3. All I/O cables were positioned to simulate typical actual usage as per ANSI C63.10.
4. If a EUT received DC power from the USB Port of Notebook PC, the PC's adapter received AC120V/60Hz power through a Line Impedance Stabilization Network (LISN) which supplied power source and was grounded to the ground plane.
5. All support equipments received AC power from a second LISN, if any.
6. The EUT test program was started. Emissions were measured on each current carrying line of the EUT using a spectrum Analyzer / Receiver connected to the LISN powering the EUT. The LISN has two monitoring points: Line 1 (Hot Side) and Line 2 (Neutral Side). Two scans were taken: one with Line 1 connected to Analyzer / Receiver and Line 2 connected to a 50 ohm load; the second scan had Line 1 connected to a 50 ohm load and Line 2 connected to the Analyzer / Receiver.
7. Analyzer / Receiver scanned from 150 KHz to 30MHz for emissions in each of the test modes.

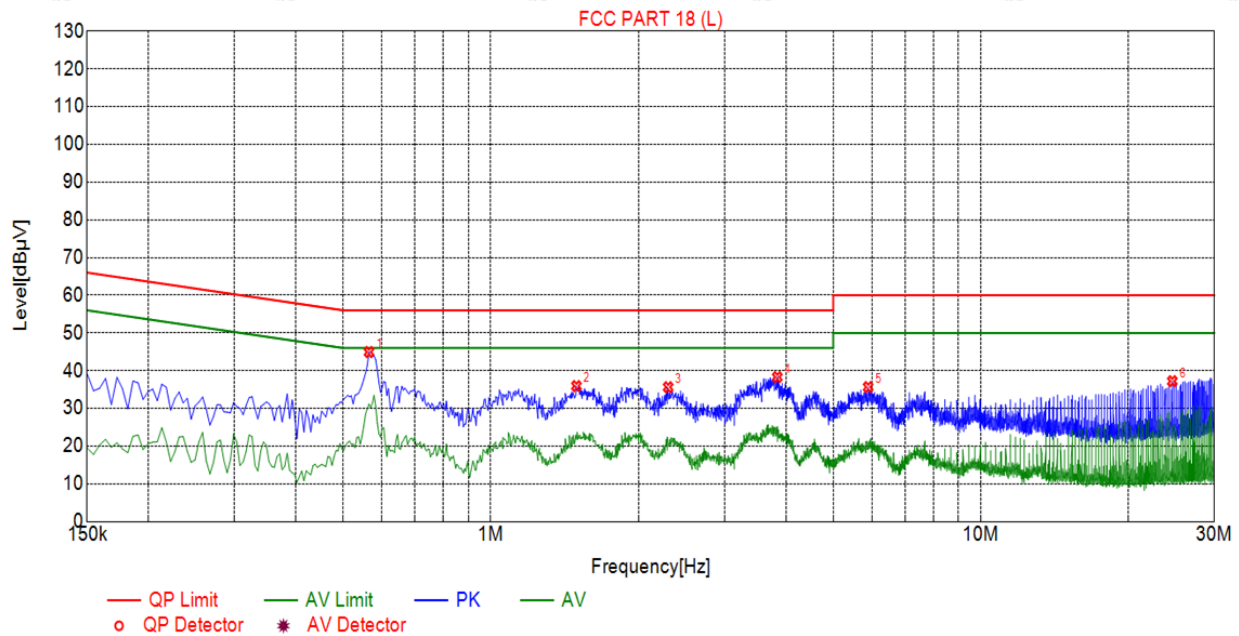


## 3.4. Test Result

PASS

All the test modes completed for test. Only the worst result was reported as below:

Test Specification: Line



## Suspected List

NO.	Freq. [MHz]	Level [dBμV]	Factor [dB]	Limit [dBμV]	Margin [dB]	Reading [dBμV]	Detector	Type
1	0.5640	44.95	20.06	56.00	11.05	24.89	PK	L
2	1.4955	35.93	20.10	56.00	20.07	15.83	PK	L
3	2.3010	35.63	20.18	56.00	20.37	15.45	PK	L
4	3.8445	38.30	20.25	56.00	17.70	18.05	PK	L
5	5.8920	35.66	20.23	60.00	24.34	15.43	PK	L
6	24.6165	37.22	20.24	60.00	22.78	16.98	PK	L

Remark: Margin = Limit - Level

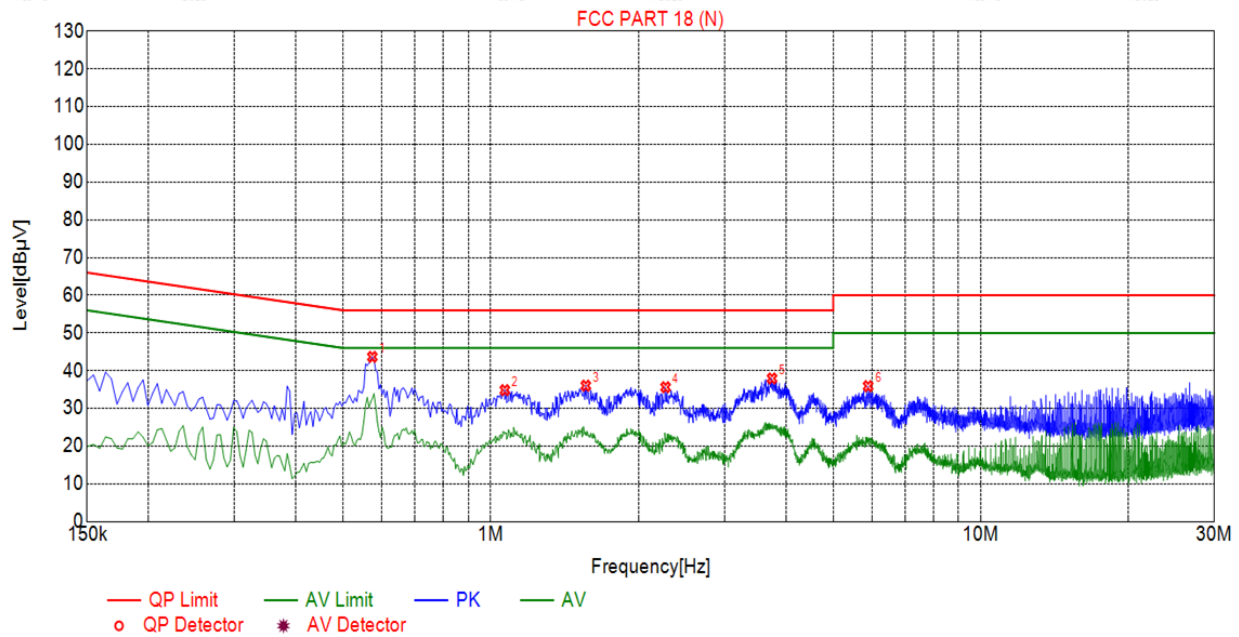
Correction factor = Cable lose + LISN insertion loss

Level=Test receiver reading + correction factor





## Test Specification: Neutral



## Suspected List

NO.	Freq. [MHz]	Level [dBμV]	Factor [dB]	Limit [dBμV]	Margin [dB]	Reading [dBμV]	Detector	Type
1	0.5730	43.67	20.05	56.00	12.33	23.62	PK	N
2	1.0680	34.85	20.07	56.00	21.15	14.78	PK	N
3	1.5630	36.03	20.11	56.00	19.97	15.92	PK	N
4	2.2740	35.62	20.18	56.00	20.38	15.44	PK	N
5	3.7500	37.95	20.25	56.00	18.05	17.70	PK	N
6	5.8920	35.90	20.23	60.00	24.10	15.67	PK	N

Remark:  $\text{Margin} = \text{Limit} - \text{Level}$

Correction factor = Cable lose + LISN insertion loss

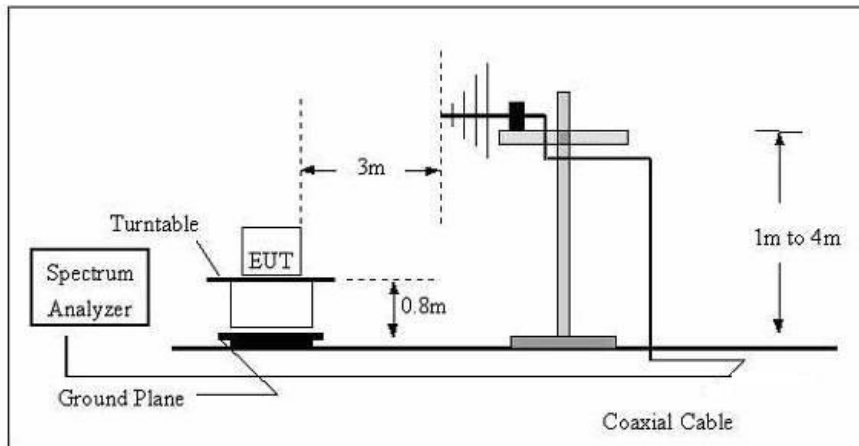
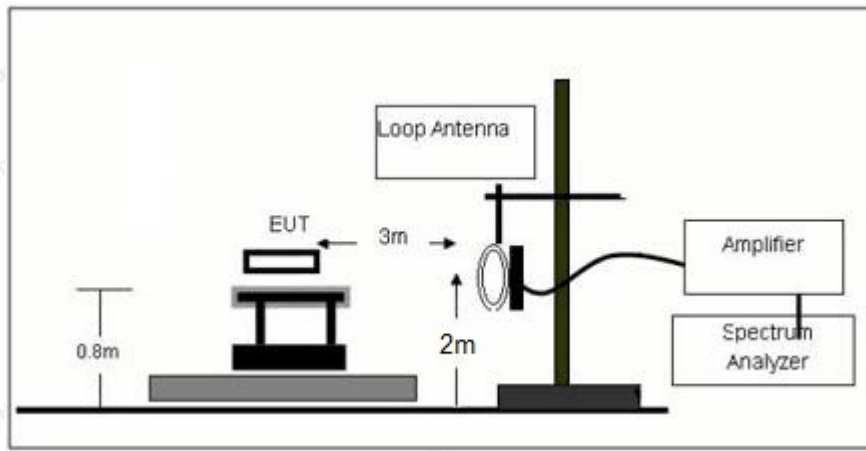
Level = Test receiver reading + correction factor





## 4. Radiated Emissions

### 4.1. Block Diagram of Test Setup





## 4.2. Rules and Specifications

Except as provided elsewhere in this Subpart 18.305 (b), the field strength levels of emissions which lie outside the bands specified in §18.301, unless otherwise indicated, shall not exceed the following table:

Equipment	Operating frequency	RF Power generated by equipment (watts)	Field strength limit (uV/m)	Distance (meters)
(miscellaneous)				
	Any non-ISM frequency	Below 500 500 or more	15 15 × SQRT(power/500)	300 1300

Remark:

- (1) Emission level dBuV/m for 0.009~30MHz = 20log (15) + 40log (300/3) dBuV/m;
- (2) Calculated according FCC 18.305.
- (3) The smaller limit shall apply at the cross point between two frequency bands.
- (4) Distance is the distance in meters between the measuring instrument, antenna and the closest point of any part of the device or system.

## 4.3. Test Procedure

Measurement distance 3m

For the measurement range up to 30MHz in the following plots the field strength result from 3m  
Distance measurements are extrapolated to 300m and 30m distance respectively, by 40dB/decade, Per antenna factor scaling.

Measurements below 1000MHz are performed with a peak detector and compared to average limits,  
Measurements with an average detector are not required.

Note:

For battery operated equipment, the equipment tests shall be performed using a new battery.

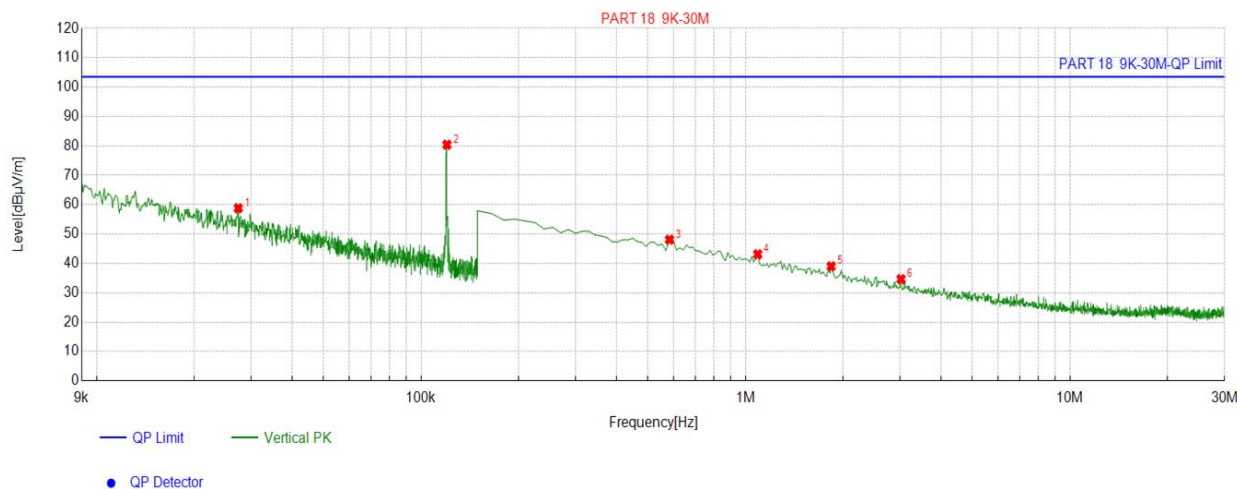
## 4.4. Test Result

**PASS**

Note: All the test modes completed for test. Only the worst result was reported as below:



For 9KHz - 30MHz

**Suspected List**

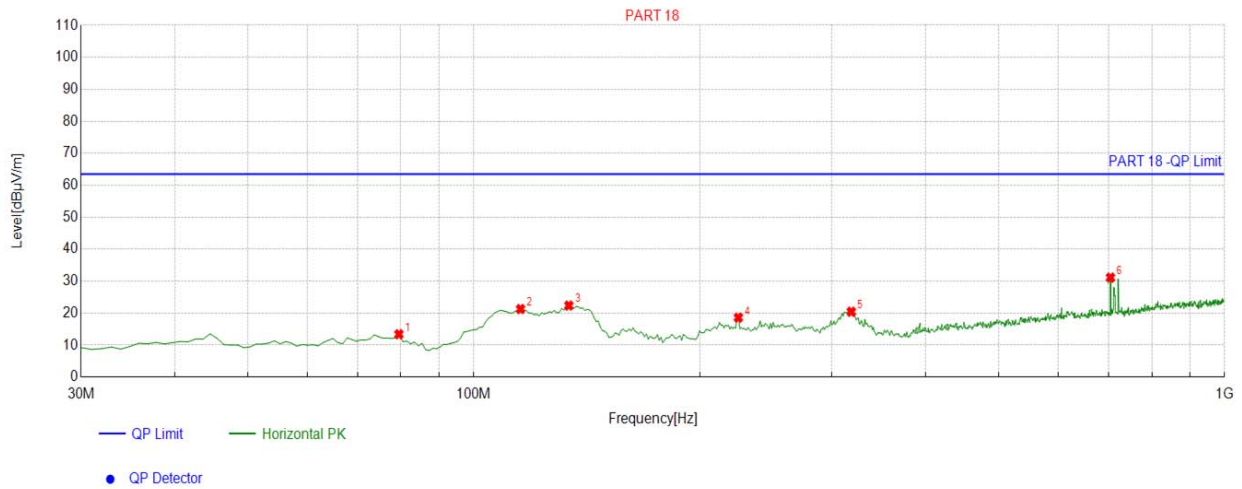
NO.	Freq. [MHz]	Factor [dB]	Reading [dBμV/m]	Level [dBμV/m]	Limit [dBμV/m]	Margin [dB]
1	0.0273	14.69	44.09	58.78	103.50	44.72
2	0.1201	13.79	66.61	80.40	103.50	23.10
3	0.5830	13.71	34.34	48.05	103.50	55.45
4	1.0907	14.15	28.93	43.08	103.50	60.42
5	1.8374	14.46	24.53	38.99	103.50	64.51
6	3.0170	14.52	20.11	34.63	103.50	68.87

Remark: Factor = Cable loss + Antenna factor – Preamplifier; Level = Reading + Factor; Margin = Limit – Level



For 30MHz-1GHz

Antenna polarity: H



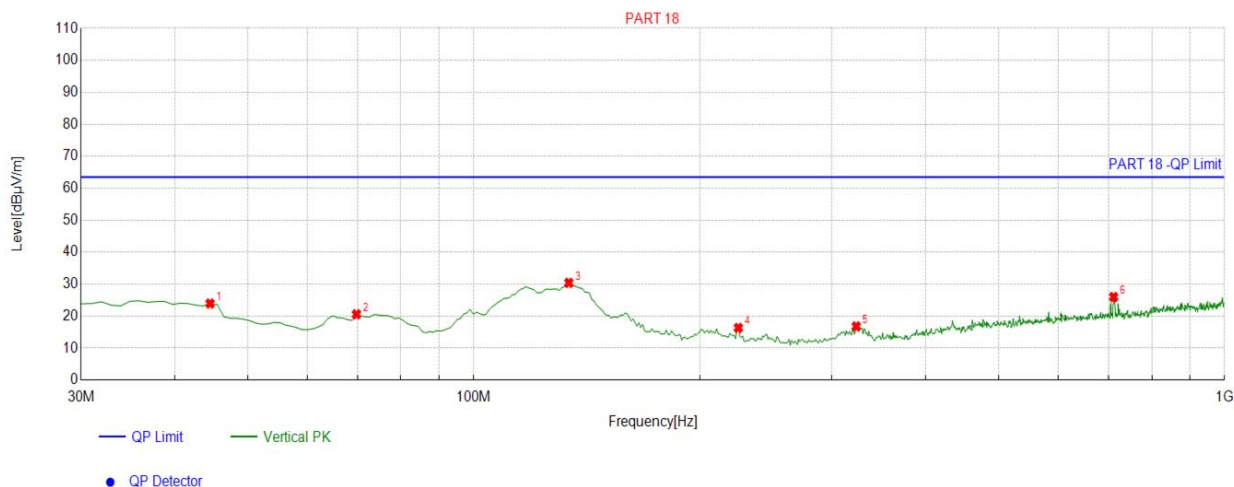
Suspected List									
NO.	Freq. [MHz]	Factor [dB]	Reading [dBμV/m]	Level [dBμV/m]	Limit [dBμV/m]	Margin [dB]	Height [cm]	Angle [°]	Polarity
1	79.5195	-17.40	30.78	13.38	63.50	50.12	100	9	Horizontal
2	115.4454	-15.02	36.30	21.28	63.50	42.22	100	184	Horizontal
3	133.8939	-17.31	39.67	22.36	63.50	41.14	100	9	Horizontal
4	225.1652	-14.00	32.59	18.59	63.50	44.91	100	344	Horizontal
5	318.3784	-11.71	32.14	20.43	63.50	43.07	100	274	Horizontal
6	704.8248	-3.66	34.77	31.11	63.50	32.39	100	97	Horizontal

Remark: Factor = Cable loss + Antenna factor – Preamplifier; Level = Reading + Factor; Margin = Limit – Level;





Antenna polarity: V



Suspected List									
NO.	Freq. [MHz]	Factor [dB]	Reading [dBμV/m]	Level [dBμV/m]	Limit [dBμV/m]	Margin [dB]	Height [cm]	Angle [°]	Polarity
1	44.5646	-15.07	39.00	23.93	63.50	39.57	100	3	Vertical
2	69.8098	-15.91	36.47	20.56	63.50	42.94	100	208	Vertical
3	133.8939	-17.31	47.71	30.40	63.50	33.10	100	231	Vertical
4	225.1652	-14.00	30.33	16.33	63.50	47.17	100	348	Vertical
5	323.2332	-11.64	28.43	16.79	63.50	46.71	100	348	Vertical
6	711.6216	-3.52	29.50	25.98	63.50	37.52	100	340	Vertical

Remark: Factor = Cable loss + Antenna factor – Preamplifier; Level = Reading + Factor; Margin = Limit – Level;



## 5. Antenna Requirement

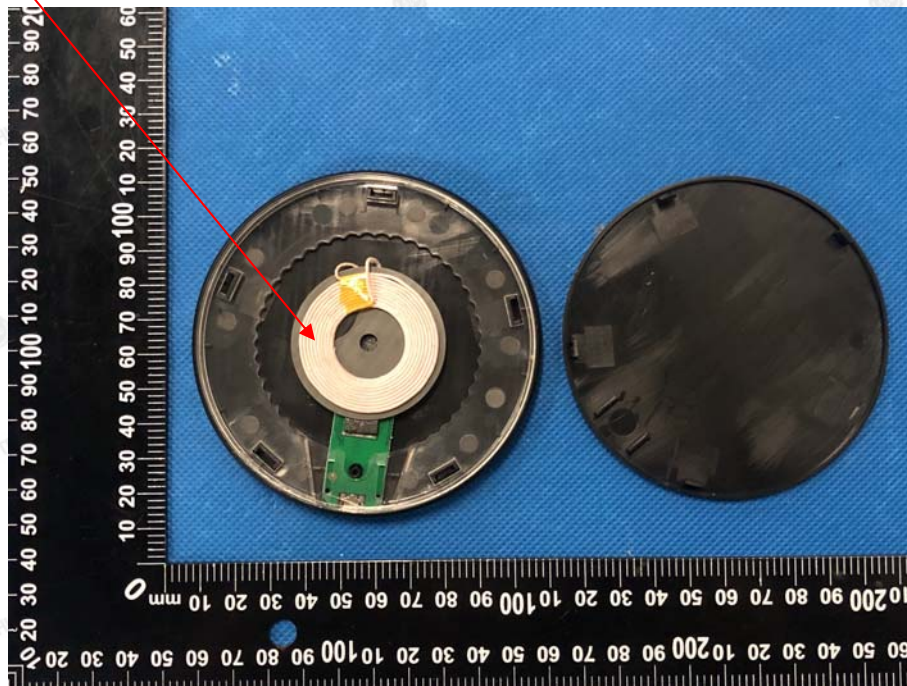
### Refer to statement below for compliance.

The manufacturer may design the unit so that the user can replace a broken antenna, but the use of a standard antenna jack or electrical connector is prohibited. Further, this requirement does not apply to intentional radiators that must be professionally installed.

### Antenna Connected Construction

The antenna used in this product is a Coil Antenna, which permanently attached. It conforms to the standard requirements. The directional gains of antenna used for transmitting is 0dBi.

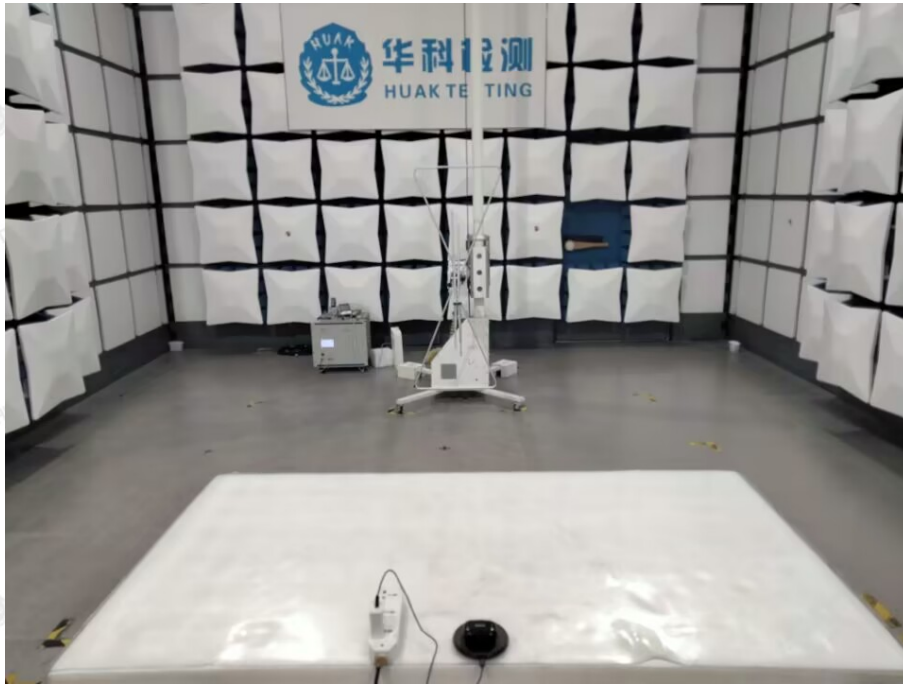
Antenna





## 6. Photograph of Test

### Radiated Emission



The results shown in this test report refer only to the sample(s) tested unless otherwise stated and the sample(s) are retained for 30 days only. The document is issued by HUAKE, this document cannot be reproduced except in full with our prior written permission. The more details and the authenticity of the report will be confirmed at <http://www.cer-mark.com>.

TEL : +86-755 2302 9901 FAX : +86-755 2302 9901 E-mail : [service@cer-mark.com](mailto:service@cer-mark.com)

Add: 1-2F., Building B2, Junfeng Zhongcheng Zhizao Innovation Park, Heping Community, Fuhai Street, Bao'an District, Shenzhen, Guangdong, China





## Conducted Emission







## 7. Photos of the EUT

Reference to the report: ANNEX A of external photos and ANNEX B of internal photos.

-----End of test report-----