

ausker

WIRELESS CARPLAY ADAPTER

USER MANUAL

Wireless CarPlay Operation Steps

① Plug the wireless carplay adapter into the USB port

The car must support the CarPlay function.



② Click the CarPlay icon on the screen of your car

The CarPlay icon will light up when the car recognizes the adapter.



③ Pair the iPhone with the CarPlay system

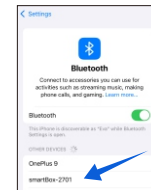
Use your iPhone to pair with the system after entering the CarPlay pairing page.



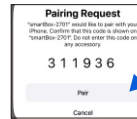
Wireless CarPlay Pairing Process

Please Note:

- Before pairing, please ignore the Bluetooth pairing between your phone and car to avoid interference (Note that it is ignore! Ignore! Ignore! Not disconnect)
- Please use the iPhone for Bluetooth pairing, turn on the phone's Bluetooth and WIFI first, use the phone to search the Bluetooth name that appears on the car's screen to pair, then connect according to the iPhone prompts!



①
Use the phone to search the Bluetooth name that appears on the car's screen to pair



②
Click "Pair"



③
Click "Allow"



④
Click "Connect "

FCC Warning:

This equipment has been tested and found to comply with the limits for a Class B digital device, pursuant to part 15 of the FCC Rules. These limits are designed to provide reasonable protection against harmful interference in a residential installation. This equipment generates, uses and can radiate radio frequency energy and, if not installed and used in accordance with the instructions, may cause harmful interference to radio communications. However, there is no guarantee that interference will not occur in a particular installation. If this equipment does cause harmful interference to radio or television reception, which can be determined by turning the equipment off and on, the user is encouraged to try to correct the interference by one or more of the following measures:

- Reorient or relocate the receiving antenna.
- Increase the separation between the equipment and receiver.
- Connect the equipment into an outlet on a circuit different from that to which the receiver is connected.
- Consult the dealer or an experienced radio/TV technician for help.

Caution: Any changes or modifications to this device not explicitly approved by manufacturer could void your authority to operate this equipment.

This device complies with part 15 of the FCC Rules. Operation is subject to the following two conditions:

(1) This device may not cause harmful interference, and (2) this device must accept any interference received, including interference that may cause undesired operation.

This equipment complies with FCC radiation exposure limits set forth for an uncontrolled environment. This equipment should be installed and operated with minimum distance 20cm between the radiator and your body.