

## **EXHIBIT 9**

### **Internal Photographs**

(Pursuant to FCC Part 2.1033(b)(7), 2.1033(c)(12) and RSP 100 Annex C)

The following photographs are attached.

#### **Exhibit**

- |   |    |
|---|----|
| 1. RF board <u>with</u> Shields (Top)                     | 9A |
| 2. RF board <u>without</u> Shields (Top)                  | 9B |
| 3. RF board <u>with</u> Shields (Bottom)                  | 9C |
| 4. RF board <u>without</u> Shields (Bottom)               | 9D |
| 5. RF boards <u>with</u> chassis and housing (Front Side) | 9E |
| 6. Chassis and housing (Back Side)                        | 9F |
| 7. Exploded View of Radio                                 | 9G |

**Exhibit 9A : RF board with Shields (Top)**



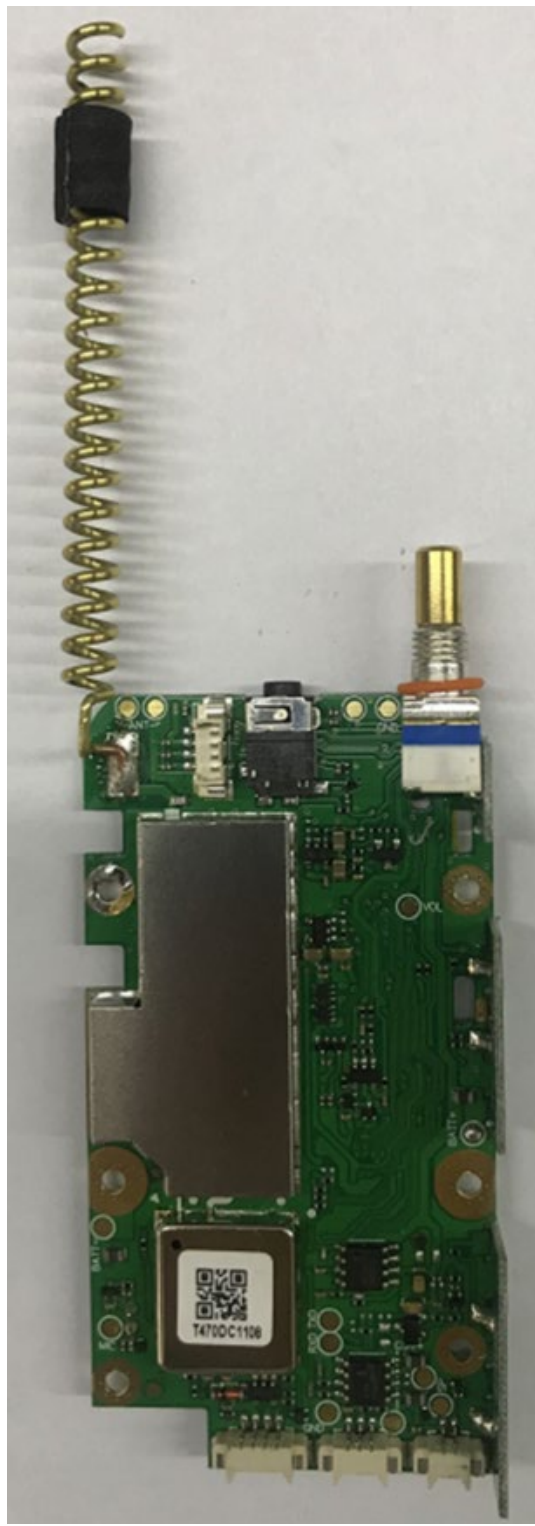
T470 and T475

**Exhibit 9B : RF board without Shields (Top)**



T470 and T475

**Exhibit 9C : RF board with Shields (Bottom)**



T470 and T475

**Exhibit 9D : RF board without Shields (Bottom)**



T470 and T475

**Exhibit 9E : RF boards with chassis and housing for (Front Side)**



T470 and T475

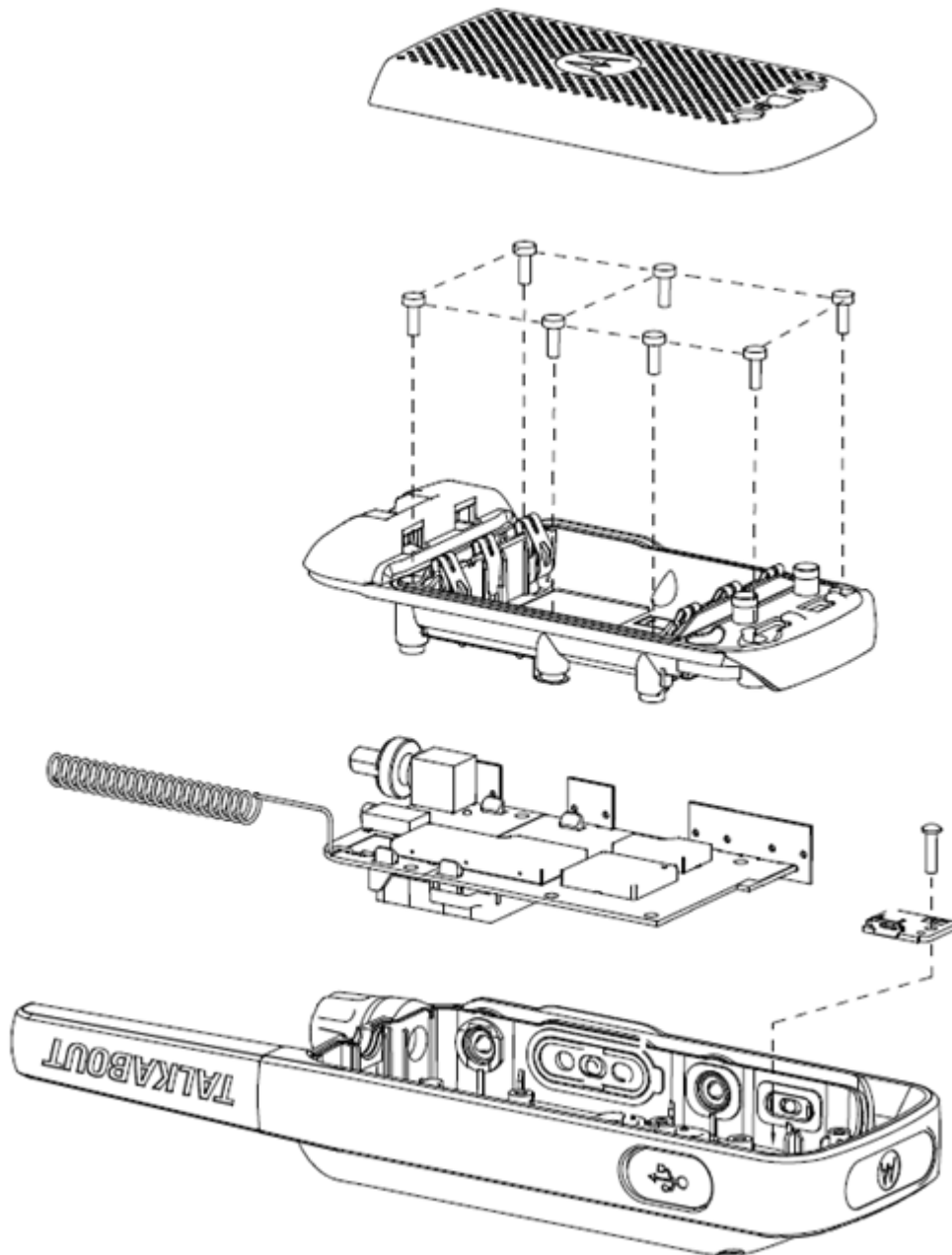


**Exhibit 9F : Chassis and housing (Back Side)**



T470 and T475

**Exhibit 9G : Exploded View of Radio**



**T47X Series**

**\*\*\* END \*\*\***