

# TEST REPORT

Report No.	CISRR25010702504
Project No.	CISR250107025
FCC ID	2BHBO-FITS03
Applicant	Shenzhen Xiaoqie Electronics Co.,LTD
Address	Room 301, Building ,No.B12, Zongtai Digital Economy Industrial Park, Yintian Creative Park, Xixiang Street, Bao'an District, Shenzhen, China
Manufacturer	Shenzhen Xinyihong Electronics Co., Ltd
Address	403, Building B2, Anle Industrial Zone, No. 172 Hangcheng Avenue, Sanwei Community, Hangcheng Street, Bao'an District, Shenzhen
Product Name	Open wear stereo headsets
Trade Mark	N/A
Model/Type reference	Fits03
Listed Model(s)	Fits03 pro
Standard	47 CFR Part 15.247
Test date	January 8, 2025 to January 15, 2025
Issue date	January 17, 2025
Test result	Complied



Prepared by: Edward Wang



Approved by: Genry Long

The test results relate only to the tested samples.

The test report should not be reproduced except in full without the written approval of Shenzhen Bangce Testing Technology Co., Ltd.

## Contents

<b>1. REPORT VERSION .....</b>	<b>3</b>
<b>2. TEST DESCRIPTION .....</b>	<b>4</b>
<b>3. SUMMARY .....</b>	<b>5</b>
3.1. Product Description * .....	5
3.2. Radio Specification Description * .....	5
3.3. Modification of EUT .....	5
3.4. Deviation from standards .....	5
3.5. Testing Site .....	6
<b>4. TEST CONFIGURATION .....</b>	<b>7</b>
4.1. Test frequency list .....	7
4.2. Descriptions of test mode .....	7
4.3. Support unit used in test configuration .....	7
4.4. Test sample information .....	7
4.5. Environmental conditions .....	8
4.6. Equipment Used during the Test .....	9
<b>5. TEST RESULTS .....</b>	<b>11</b>
5.1. Evaluation Results (Evaluation) .....	11
5.1.1. Antenna Requirement .....	11
5.2. Radio Spectrum Matter Test Results (RF) .....	12
5.2.1. Conducted Emission at AC power line .....	12
5.2.2. Maximum Conducted Output Power .....	15
5.2.3. Channel Separation .....	16
5.2.4. Number of Hopping Frequencies .....	17
5.2.5. Dwell Time .....	18
5.2.6. Conducted band edge and spurious emission .....	20
5.2.7. Radiated band edge emission .....	22
5.2.8. Radiated Spurious Emission (below 1GHz) .....	30
5.2.9. Radiated Spurious Emission (Above 1GHz) .....	34
<b>6. TEST SETUP PHOTOS .....</b>	<b>42</b>
<b>7. EXTERNAL AND INTERNAL PHOTOS .....</b>	<b>44</b>
7.1. External Photos .....	44
7.2. Internal Photos .....	48
<b>8. APPENDIX REPORT .....</b>	<b>50</b>

## 1. REPORT VERSION

Version No.	Issue date	Description
00	January 17, 2025	Original

## 2. TEST DESCRIPTION

No.	Test Item	Standard Requirement	Result
1	Antenna Requirement	47 CFR 15.203	Pass
2	Conducted Emission at AC power line	47 CFR 15.207(a)	Pass
3	Maximum Conducted Output Power	47 CFR 15.247(b)(1)	Pass
4	Channel Separation	47 CFR 15.247(a)(1)	Pass
5	Number of Hopping Frequencies	47 CFR 15.247(a)(1)(iii)	Pass
6	Dwell Time	47 CFR 15.247(a)(1)(iii)	Pass
7	Conducted band edge and spurious emission	47 CFR 15.247(d), 15.209, 15.205	Pass
8	Radiated band edge emission	47 CFR 15.247(d), 15.209, 15.205	Pass
9	Radiated Spurious Emission (below 1GHz)	47 CFR 15.247(d), 15.209, 15.205	Pass
10	Radiated Spurious Emission (Above 1GHz)	47 CFR 15.247(d), 15.209, 15.205	Pass

Note:

- The measurement uncertainty is not included in the test result.

### 3. SUMMARY

#### 3.1. Product Description \*

Main unit information:	
Product Name:	Open wear stereo headsets
Trade Mark:	N/A
Model No.:	Fits03
Listed Model(s):	Fits03 pro
Model difference:	There are differences in the texture of the plastic shell of the charging case and color
Power supply:	DC 5V
Hardware version:	20250111
Software version:	20250111
Accessory unit information:	
Battery information:	3.7V

#### 3.2. Radio Specification Description \*

Modulation type:	GFSK, $\pi/4$ DQPSK, 8DPSK
Operation frequency:	2402MHz to 2480MHz
Channel number:	79
Channel separation:	1MHz
Antenna type:	Chip Antenna
Antenna gain:	2.7dBi

Note:

- 1) \*: Since the above information is provided by the applicant relevant results or conclusions of this report are only made for these information, Bangce is not responsible for the authenticity, integrity and results of the information and/or the validity of the conclusion.

#### 3.3. Modification of EUT

No modifications are made to the EUT during all test items.

#### 3.4. Deviation from standards

None

### 3.5. Testing Site

Laboratory Name	Shenzhen Bangce Testing Technology Co., Ltd.
Laboratory Location	101, building 10, Yunli Intelligent Park, Shutianpu community, Matian Street, Guangming District, Shenzhen, Guangdong, China
Contact information	Tel: 86-755-2319 6848, email: <a href="mailto:service@cis-cn.net">service@cis-cn.net</a> Website: <a href="http://www.cis-cn.net/">http://www.cis-cn.net/</a>
FCC registration number	736346
FCC designation number	CN1372

## 4. TEST CONFIGURATION

### 4.1. Test frequency list

Lowest Channel (LCH) (MHz)	Middle Channel (MCH) (MHz)	Highest Channel (HCH) (MHz)
2402	2441	2480

### 4.2. Descriptions of test mode

No	Test mode	Description
TM1	TX-GFSK (Non-Hopping)	Keep the EUT in continuously transmitting mode (non-hopping) with GFSK modulation at lowest, middle and highest channel.
TM2	TX-Pi/4DQPSK (Non-Hopping)	Keep the EUT in continuously transmitting mode (non-hopping) with Pi/4DQPSK modulation at lowest, middle and highest channel.
TM3	TX-8DPSK (Non-Hopping)	Keep the EUT in continuously transmitting mode (non-hopping) with 8DPSK modulation at lowest, middle and highest channel.
TM4	TX-GFSK (Hopping)	Keep the EUT in continuously transmitting mode (hopping) with GFSK modulation,.
TM5	TX-Pi/4DQPSK (Hopping)	Keep the EUT in continuously transmitting mode (hopping) with Pi/4DQPSK modulation.
TM6	TX-8DPSK (Hopping)	Keep the EUT in continuously transmitting mode (hopping) with 8DPSK modulation.
TM7	Link mode	Keep the EUT in Bluetooth linking mode with AE.
TM8	Charging mode	Keep the EUT in charging mode with AE.

NOTE: The left and right ears of the headset of this device are the same, and we only reflect the test data of the right ear.

### 4.3. Support unit used in test configuration

The EUT has been associated with peripherals and configuration operated in a manner tended to maximize its emission characteristics in a typical application.

The following peripheral devices and interface cables were connected during the measurement:

Item	Equipment name	Trade Name	Model No.
1	Adapter	Guangdong Sangu Technology Co. Ltd	SG-0501000AU
2	Phone	Huawei	NZONE S7

### 4.4. Test sample information

Type	Sample No.
Engineer sample	CISR250107025-S01
Normal sample	CISR250107025-S02

#### 4.5. Environmental conditions

Type	Requirement
Temperature:	15~35°C
Relative Humidity:	25~75%
Air Pressure:	860~1060mbar



#### 4.6. Equipment Used during the Test

Conducted Emission at AC power line						
Item	Equipment name	Manufacturer	Model	Serial No.	Calibration date	Due date
1	EMI Test Receiver	Rohde&schwarz	ESC17	100853	2025-01-08	2026-01-07
2	Artificial power network	Schwarzbeck	NSLK8127	8127-01096	2025-01-08	2026-01-07
3	8-wire Impedance Stabilization Network	Schwarzbeck	NTFM 8158	8158-00337	2025-01-08	2026-01-07
4	Artificial power network	Schwarzbeck	ENV216	/	2025-01-08	2026-01-07

Emissions in non-restricted frequency bands Maximum Conducted Output Power Channel Separation Number of Hopping Frequencies Dwell Time						
Item	Equipment name	Manufacturer	Model	Serial No.	Calibration date	Due date
1	MXG RF Signal Generator	Agilent	N5181A	MY50145362	2025-01-08	2026-01-07
2	Spectrum analyzer	R&S	FSV-40N	102130	2025-01-08	2026-01-07
3	Vector Signal Generator	Agilent	N5182A	MY50142364	2025-01-08	2026-01-07
4	Power Meter	WCS	WCS-PM	WCSPM230405A	2025-01-08	2026-01-07

Band edge emissions (Radiated) Emissions in frequency bands (below 1GHz) Emissions in frequency bands (above 1GHz)						
Item	Equipment name	Manufacturer	Model	Serial No.	Calibration date	Due date
1	EMI Test Receiver	Rohde&schwarz	ESC17	100853	2025-01-08	2026-01-07
2	Amplifier	Tonscend	TAP9K3G40	AP23A8060270	2025-01-08	2026-01-07
3	Prime amplifier	Tonscend	TAP01018050	AP23A8060280	2025-01-08	2026-01-07
4	9*6*6 anechoic chamber	SKET	9.3*6.3*6	N/A	2024-09-02	2027-09-01
5	Spectrum analyzer	Agilent	N9020A	MY50530263	2025-01-08	2026-01-07
6	Spectrum analyzer	R&S	FSV-40N	102130	2025-01-08	2026-01-07
7	Bilog Antenna	Schwarzbeck	VULB 9163	1463	2023-01-09	2026-01-08
8	Horn Antenna	SCHWARZBECK	BBHA 9120 D	2487	2023-01-09	2026-01-08

9	Active Loop Antenna	SCHWARZBECK	FMZB 1519B	/	2023-01-09	2026-01-08
10	RF Cable	Tonscend	Cable 1	/	2025-01-08	2026-01-07
11	RF Cable	Tonscend	Cable 2	/	2025-01-08	2026-01-07
12	RF Cable	SKET	Cable 3	/	2025-01-08	2026-01-07
13	L.I.S.N.#1	Schwarzbeck	NSLK8127	/	2025-01-08	2026-01-07
14	L.I.S.N.#2	ROHDE&SCHWARZ	ENV216	/	2025-01-08	2026-01-07
15	Horn Antenna	SCHWARZBECK	BBHA9170	1130	2023-01-09	2026-01-08
16	Preamplifier	Tonscend	TAP18040048	AP21C806126	2025-01-08	2026-01-07
17	Variable-frequency power source	Pinhong	PH1110	/	2025-01-08	2026-01-07
18	6dB Attenuator	SKET	DC-6G	/	2025-01-08	2026-01-07
19	Antenna tower	SKT	Bk-4AT-BS	AT2021040101-V1	2025-01-08	2026-01-07

## 5. TEST RESULTS

### 5.1. Evaluation Results (Evaluation)

#### 5.1.1. Antenna Requirement

Test Requirement:	Refer to 47 CFR Part 15.203, an intentional radiator shall be designed to ensure that no antenna other than that furnished by the responsible party shall be used with the device. The use of a permanently attached antenna or of an antenna that uses a unique coupling to the intentional radiator shall be considered sufficient to comply with the provisions of this section.
-------------------	---

##### 5.1.1.1. Test Result

Pass

##### 5.1.1.2. Conclusion:

The EUT antenna is Chip Antenna(2.7dBi), the directional gain of the antenna less than 6dBi. It comply with the standard requirement. In case of replacement of broken antenna the same antenna type must be used. Antenna structure please refer to the EUT internal photographs antenna photo.

## 5.2. Radio Spectrum Matter Test Results (RF)

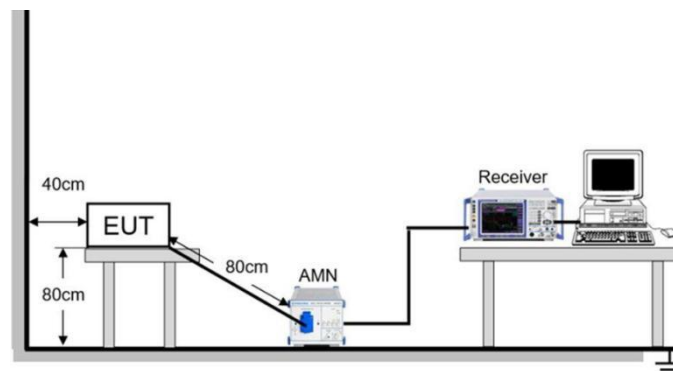
### 5.2.1. Conducted Emission at AC power line

Test Requirement:	Refer to 47 CFR 15.207(a), Except as shown in paragraphs (b) and (c) of this section, for an intentional radiator that is designed to be connected to the public utility (AC) power line, the radio frequency voltage that is conducted back onto the AC power line on any frequency or frequencies, within the band 150 kHz to 30 MHz, shall not exceed the limits in the following table, as measured using a 50 $\mu$ H/50 ohms line impedance stabilization network (LISN).		
Test Limit:	Frequency of emission (MHz)	Conducted limit (dB $\mu$ V)	
		Quasi-peak	Average
	0.15-0.5	66 to 56*	56 to 46*
	0.5-5	56	46
	5-30	60	50
*Decreases with the logarithm of the frequency.			
Test Method:	ANSI C63.10-2020 section 6.2		
Procedure:	<ol style="list-style-type: none"> <li>1. The EUT was setup according to ANSI C63.10 requirements.</li> <li>2. The EUT was placed on a platform of nominal size, 1 m by 1.5 m, raised 80 cm above the conducting ground plane. The vertical conducting plane was located 40 cm to the rear of the EUT. All other surfaces of EUT were at least 80 cm from any other grounded conducting surface.</li> <li>3. The EUT and simulators are connected to the main power through a line impedances stabilization network (LISN). The LISN provides a 50 ohm /50uH coupling impedance for the measuring equipment.</li> <li>4. The peripheral devices are also connected to the main power through a LISN. (Refer to the block diagram of the test setup and photographs)</li> <li>5. Each current-carrying conductor of the EUT power cord, except the ground (safety) conductor, was individually connected through a LISN to the input power source.</li> <li>6. The excess length of the power cord between the EUT and the LISN receptacle were folded back and forth at the center of the lead to form a bundle not exceeding 40 cm in length.</li> <li>7. Conducted emissions were investigated over the frequency range from 0.15MHz to 30MHz using a receiver bandwidth of 9 kHz.</li> <li>8. During the above scans, the emissions were maximized by cable manipulation.</li> </ol>		

#### 5.2.1.1. E.U.T. Operation

Operating Environment:					
Temperature:	23.3 °C	Humidity:	56.6 %	Atmospheric Pressure:	102 kPa
Pre test mode:	TM8				
Final test mode:	TM8				

#### 5.2.1.2. Test Setup Diagram

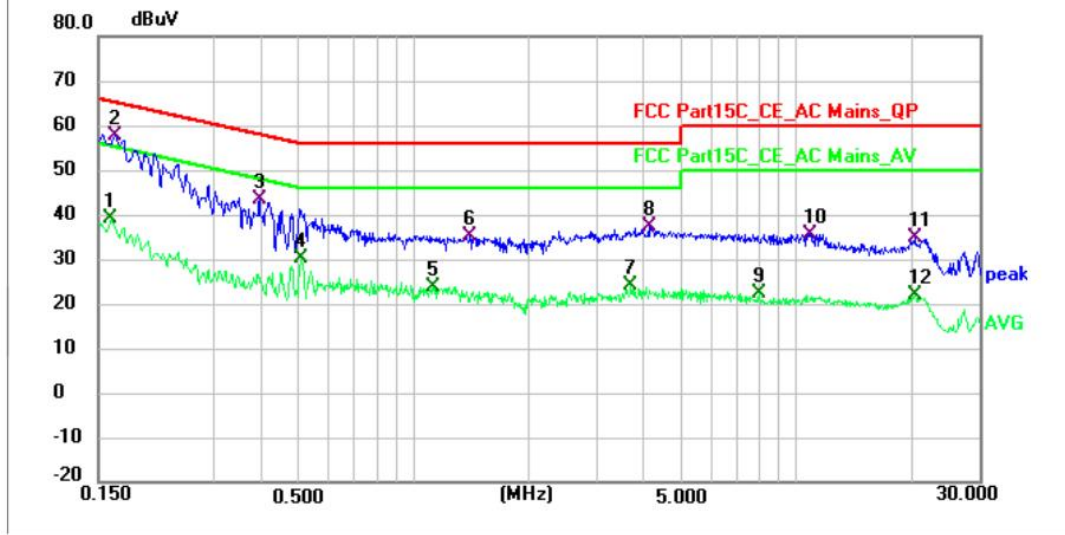


### 5.2.1.3. Test Result

Pass

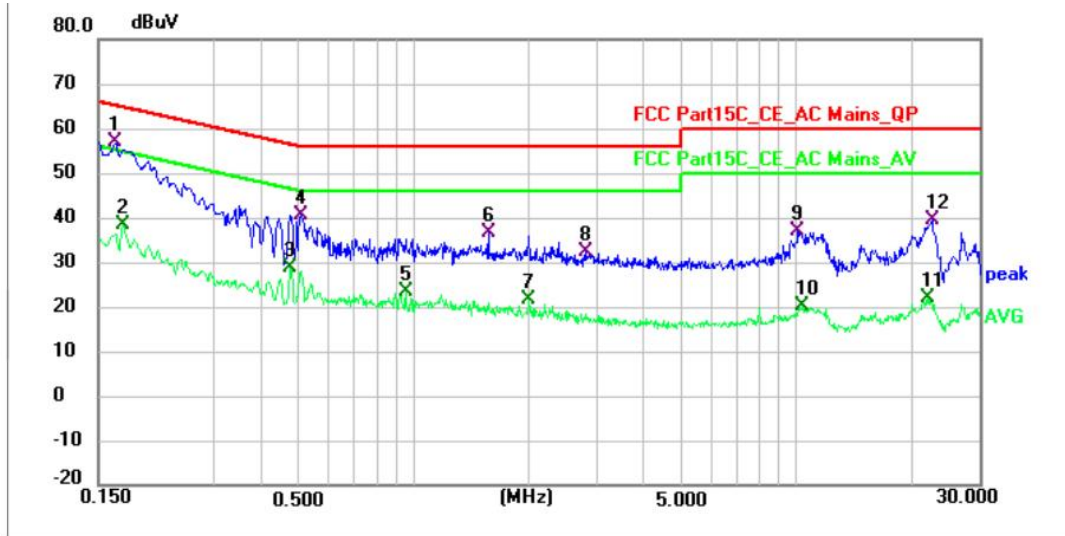
### 5.2.1.4. Test Data

Mode8 / Line: Line



No.	Frequency (MHz)	Reading (dBuV)	Factor (dB)	Level (dBuV)	Limit (dBuV)	Margin (dB)	Detector
1	0.162	28.66	10.32	38.98	55.36	-16.38	AVG
2 *	0.166	47.42	10.32	57.74	65.16	-7.42	QP
3	0.394	33.05	10.31	43.36	57.98	-14.62	QP
4	0.510	19.67	10.37	30.04	46.00	-15.96	AVG
5	1.126	13.44	10.46	23.90	46.00	-22.10	AVG
6	1.406	24.62	10.55	35.17	56.00	-20.83	QP
7	3.694	12.73	11.25	23.98	46.00	-22.02	AVG
8	4.142	25.78	11.43	37.21	56.00	-18.79	QP
9	8.002	9.38	13.04	22.42	50.00	-27.58	AVG
10	10.858	21.63	14.06	35.69	60.00	-24.31	QP
11	20.290	19.36	15.52	34.88	60.00	-25.12	QP
12	20.474	6.56	15.51	22.07	50.00	-27.93	AVG

Mode8 / Line: Neutral



No.	Frequency (MHz)	Reading (dBuV)	Factor (dB)	Level (dBuV)	Limit (dBuV)	Margin (dB)	Detector
1 *	0.166	46.50	10.32	56.82	65.16	-8.34	QP
2	0.174	28.01	10.32	38.33	54.77	-16.44	AVG
3	0.474	18.39	10.37	28.76	46.44	-17.68	AVG
4	0.510	30.08	10.38	40.46	56.00	-15.54	QP
5	0.954	12.95	10.42	23.37	46.00	-22.63	AVG
6	1.570	25.94	10.59	36.53	56.00	-19.47	QP
7	2.002	10.99	10.71	21.70	46.00	-24.30	AVG
8	2.818	21.34	10.94	32.28	56.00	-23.72	QP
9	10.078	23.24	13.64	36.88	60.00	-23.12	QP
10	10.382	6.33	13.77	20.10	50.00	-29.90	AVG
11	21.970	6.08	15.72	21.80	50.00	-28.20	AVG
12	22.578	23.93	15.65	39.58	60.00	-20.42	QP

Note:

1). Result = Reading +Correct (Insertion Loss + Cable Loss + Attenuator Factor)

2). Margin = Result - Limit

### 5.2.2. Maximum Conducted Output Power

Test Requirement:	47 CFR 15.247(b)(1)
Test Limit:	Refer to 47 CFR 15.247(b)(1), For frequency hopping systems operating in the 2400-2483.5 MHz band employing at least 75 non-overlapping hopping channels, and all frequency hopping systems in the 5725-5850 MHz band: 1 watt. For all other frequency hopping systems in the 2400-2483.5 MHz band: 0.125 watts.
Test Method:	ANSI C63.10-2020, section 7.8.5
Procedure:	<p>This is an RF-conducted test to evaluate maximum peak output power. Use a direct connection between the antenna port of the unlicensed wireless device and the spectrum analyzer, through suitable attenuation. Frequency hopping shall be disabled for this test. Use the following spectrum analyzer settings:</p> <ul style="list-style-type: none"> <li>a) Span: Approximately five times the 20 dB bandwidth, centered on a hopping channel.</li> <li>b) RBW &gt; 20 dB bandwidth of the emission being measured.</li> <li>c) VBW ≥ RBW.</li> <li>d) Sweep: No faster than coupled (auto) time.</li> <li>e) Detector function: Peak.</li> <li>f) Trace: Max-hold.</li> <li>g) Allow trace to stabilize.</li> <li>h) Use the marker-to-peak function to set the marker to the peak of the emission.</li> <li>i) The indicated level is the peak output power, after any corrections for external attenuators and cables.</li> <li>j) A spectral plot of the test results and setup description shall be included in the test report.</li> </ul> <p>NOTE—A peak responding power meter may be used, where the power meter and sensor system video bandwidth is greater than the occupied bandwidth of the unlicensed wireless device, rather than a spectrum analyzer.</p>

#### 5.2.2.1. E.U.T. Operation

Operating Environment:					
Temperature:	22.1 °C	Humidity:	55.8 %	Atmospheric Pressure:	103 kPa
Pre test mode:	TM1, TM2, TM3				
Final test mode:	TM1, TM2, TM3				

#### 5.2.2.2. Test Setup Diagram



#### 5.2.2.3. Test Result

Pass

#### 5.2.2.4. Test Data

Please Refer to Appendix for Details.

### 5.2.3. Channel Separation

Test Requirement:	47 CFR 15.247(a)(1)
Test Limit:	Refer to 47 CFR 15.247(a)(1), Frequency hopping systems shall have hopping channel carrier frequencies separated by a minimum of 25 kHz or the 20 dB bandwidth of the hopping channel, whichever is greater. Alternatively, frequency hopping systems operating in the 2400-2483.5 MHz band may have hopping channel carrier frequencies that are separated by 25 kHz or two-thirds of the 20 dB bandwidth of the hopping channel, whichever is greater, provided the systems operate with an output power no greater than 125 mW.
Test Method:	ANSI C63.10-2020, section 7.8.2
Procedure:	<p>The EUT shall have its hopping function enabled. Use the following spectrum analyzer settings:</p> <ul style="list-style-type: none"> <li>a) Span: Wide enough to capture the peaks of two adjacent channels.</li> <li>b) RBW: Start with the RBW set to approximately 30% of the channel spacing; adjust as necessary to best identify the center of each individual channel.</li> <li>c) Video (or average) bandwidth (VBW) <math>\geq</math> RBW.</li> <li>d) Sweep: No faster than coupled (auto) time.</li> <li>e) Detector function: Peak.</li> <li>f) Trace: Max-hold.</li> <li>g) Allow the trace to stabilize.</li> </ul> <p>Use the marker-delta function to determine the separation between the peaks of the adjacent channels. Compliance of an EUT with the appropriate regulatory limit shall be determined. A spectral plot of the data shall be included in the test report.</p>

#### 5.2.3.1. E.U.T. Operation

Operating Environment:					
Temperature:	22.1 °C	Humidity:	55.8 %	Atmospheric Pressure:	103 kPa
Pre test mode:	TM4, TM5, TM6				
Final test mode:	TM4, TM5, TM6				

#### 5.2.3.2. Test Setup Diagram



#### 5.2.3.3. Test Result

Pass

#### 5.2.3.4. Test Data

Please Refer to Appendix for Details.



#### 5.2.4. Number of Hopping Frequencies

Test Requirement:	47 CFR 15.247(a)(1)(iii)
Test Limit:	Refer to 47 CFR 15.247(a)(1)(iii), Frequency hopping systems in the 2400-2483.5 MHz band shall use at least 15 channels. The average time of occupancy on any channel shall not be greater than 0.4 seconds within a period of 0.4 seconds multiplied by the number of hopping channels employed. Frequency hopping systems may avoid or suppress transmissions on a particular hopping frequency provided that a minimum of 15 channels are used.
Test Method:	ANSI C63.10-2020, section 7.8.3
Procedure:	<p>The EUT shall have its hopping function enabled. Use the following spectrum analyzer settings:</p> <ul style="list-style-type: none"> <li>a) Span: The frequency band of operation. Depending on the number of channels the device supports, it could be necessary to divide the frequency range of operation across multiple spans, to allow the individual channels to be clearly seen.</li> <li>b) RBW: To identify clearly the individual channels, set the RBW to less than 30% of the channel spacing or the 20 dB bandwidth, whichever is smaller.</li> <li>c) VBW <math>\geq</math> RBW.</li> <li>d) Sweep: No faster than coupled (auto) time.</li> <li>e) Detector function: Peak.</li> <li>f) Trace: Max-hold.</li> <li>g) Allow the trace to stabilize.</li> </ul> <p>It might prove necessary to break the span up into subranges to show clearly all of the hopping frequencies. Compliance of an EUT with the appropriate regulatory limit shall be determined for the number of hopping channels. A spectral plot of the data shall be included in the test report.</p>

##### 5.2.4.1. E.U.T. Operation

Operating Environment:					
Temperature:	22.1 °C	Humidity:	55.8 %	Atmospheric Pressure:	103 kPa
Pre test mode:	TM4, TM5, TM6				
Final test mode:	TM4, TM5, TM6				

##### 5.2.4.2. Test Setup Diagram



##### 5.2.4.3. Test Result

Pass

##### 5.2.4.4. Test Data

Please Refer to Appendix for Details.

### 5.2.5. Dwell Time

Test Requirement:	47 CFR 15.247(a)(1)(iii)
Test Limit:	Refer to 47 CFR 15.247(a)(1)(iii), Frequency hopping systems in the 2400-2483.5 MHz band shall use at least 15 channels. The average time of occupancy on any channel shall not be greater than 0.4 seconds within a period of 0.4 seconds multiplied by the number of hopping channels employed. Frequency hopping systems may avoid or suppress transmissions on a particular hopping frequency provided that a minimum of 15 channels are used.
Test Method:	ANSI C63.10-2020, section 7.8.4
Procedure:	<p>The dwell time per hop on a channel is the time from the start of the first transmission to the end of the last transmission for that hop. If the device has a single transmission per hop then the dwell time is the duration of that transmission. If the device has a multiple transmissions per hop then the dwell time is measured from the start of the first transmission to the end of the last transmission.</p> <p>The time of occupancy is the total time that the device dwells on a channel over an observation period specified in the regulatory requirement. To determine the time of occupancy the spectrum analyzer will be configured to measure both the dwell time per hop and the number of times the device transmits on a specific channel in a given period.</p> <p>The EUT shall have its hopping function enabled. Compliance with the requirements shall be made with the minimum and with the maximum number of channels enabled. If the dwell time per channel does not vary with the number of channels then compliance with the requirements may be based on the minimum number of channels. If the device supports different dwell times per channel (example Bluetooth devices can dwell on a channel for 1, 3 or 5 time slots) then measurements can be limited to the longest dwell time with the minimum number of channels.</p> <p>Use the following spectrum analyzer settings to determine the dwell time per hop:</p> <ol style="list-style-type: none"> <li>Span: Zero span, centered on a hopping channel.</li> <li>RBW shall be <math>\leq</math> channel spacing and where possible RBW should be set <math>\gg 1/T</math>, where T is the expected transmission time per hop.</li> <li>Sweep time: Set so that the start of the first transmission and end of the last transmission for the hop are clearly captured. Setting the sweep time to be slightly longer than the hopping period per channel (hopping period = <math>1/\text{hopping rate}</math>) should achieve this.</li> <li>Use a video trigger, where possible with a trigger delay, so that the start of the transmission is clearly observed. The trigger level might need adjustment to reduce the chance of triggering when the system hops on an adjacent channel.</li> <li>Detector function: Peak.</li> <li>Trace: Clear-write, single sweep.</li> <li>Place markers at the start of the first transmission on the channel and at the end of the last transmission. The dwell time per hop is the time between these two markers.</li> </ol> <p>To determine the number of hops on a channel in the regulatory observation period repeat the measurement using a longer sweep time. When the device uses a single hopping sequence the period of measurement should be sufficient to capture at least 2 hops. When the device uses a dynamic hopping sequence, or the sequence varies, the period of measurement may need to capture multiple hops to better determine the average time of occupancy. Count the number of hops on the channel across the sweep time.</p> <p>The average number of hops on the same channel within the regulatory observation period is calculated from the number of hops on the channel divided by the spectrum analyzer sweep time multiplied by the regulatory observation period. For example, if three hops are counted with an analyzer sweep time of 500 ms and</p>

	<p>the regulatory observation period is 10 s, then the number of hops in that ten seconds is <math>3 / 0.5 \times 10</math>, or 60 hops.</p> <p>The average time of occupancy is calculated by multiplying the dwell time per hop by the number of hops in the observation period.</p>
--	--

#### 5.2.5.1. E.U.T. Operation

Operating Environment:					
Temperature:	22.1 °C	Humidity:	55.8 %	Atmospheric Pressure:	103 kPa
Pre test mode:	TM4, TM5, TM6				
Final test mode:	TM4, TM5, TM6				

#### 5.2.5.2. Test Setup Diagram



#### 5.2.5.3. Test Result

Pass

#### 5.2.5.4. Test Data

Please Refer to Appendix for Details.

### 5.2.6. Conducted band edge and spurious emission

Test Requirement:	47 CFR 15.247(d), 15.209, 15.205
Test Limit:	Refer to 47 CFR 15.247(d), In any 100 kHz bandwidth outside the frequency band in which the spread spectrum or digitally modulated intentional radiator is operating, the radio frequency power that is produced by the intentional radiator shall be at least 20 dB below that in the 100 kHz bandwidth within the band that contains the highest level of the desired power, based on either an RF conducted or a radiated measurement, provided the transmitter demonstrates compliance with the peak conducted power limits. If the transmitter complies with the conducted power limits based on the use of RMS averaging over a time interval, as permitted under paragraph (b)(3) of this section, the attenuation required under this paragraph shall be 30 dB instead of 20 dB. Attenuation below the general limits specified in § 15.209(a) is not required.
Test Method:	ANSI C63.10-2020 section 7.8.7
Procedure:	<p><b>7.8.7.1 General considerations</b> To demonstrate compliance with the relative out-of-band emissions requirements conducted spurious emissions shall be measured for the transmit frequencies, per 5.5 and 5.6, and at the maximum transmit powers. Frequency hopping shall be disabled for this test with the exception of measurements at the allocated band-edges which shall be repeated with hopping enabled.</p> <p>Connect the primary antenna port through an attenuator to the spectrum analyzer input; in the results, account for all losses between the unlicensed wireless device output and the spectrum analyzer. The frequency range of testing shall span 30 MHz to 10 times the operating frequency and this may be done in a single sweep or, to aid resolution, across a number of sweeps. The resolution bandwidth shall be 100 kHz, video bandwidth 300 kHz, and a coupled sweep time with a peak detector.</p> <p>The limit is based on the highest in-band level across all channels measured using the same instrument settings (resolution bandwidth of 100 kHz, video bandwidth of 300 kHz, and a coupled sweep time with a peak detector). To help clearly demonstrate compliance a display line may be set at the required offset (typically 20 dB) below the highest in-band level. Where the highest in-band level is not clearly identified in the out-of-band measurements a separate spectral plot showing the in-band level shall be provided.</p> <p>When conducted measurements cannot be made (for example a device with integrated, non-removable antenna) radiated measurements shall be used. The reference level for determining the limit shall be established by maximizing the field strength from the highest power channel and measuring using the resolution and video bandwidth settings and peak detector as described above. The field strength limit for spurious emissions outside of restricted-bands shall then be set at the required offset (typically 20 dB) below the highest in-band level. Radiated measurements will follow the standards measurement procedures described in Clause 6 with the exception that the resolution bandwidth shall be 100 kHz, video bandwidth 300 kHz, and a coupled sweep time with a peak detector. Note that use of wider measurement bandwidths are acceptable for measuring the spurious emissions provided that the peak detector is used and that the measured value of spurious emissions are compared to the highest in-band level measured with the 100 kHz / 300 kHz bandwidth settings to determine compliance.</p> <p><b>7.8.7.2 Band-edges</b> Compliance with a relative limit at the band-edges (e.g., -20 dBc) shall be made on the lowest and on the highest channels with frequency hopping disabled and repeated with frequency hopping enabled. For the latter test the hopping sequence shall include the lowest and highest channels.</p> <p>For measurements with the hopping disabled the analyzer screen shall clearly show compliance with the requirement within 10 MHz of the allocated band-edge.</p>

For measurements with the hopping enabled the analyzer screen shall clearly show compliance with the requirement within 10 MHz of both of the allocated band-edges. This could require separate spectral plots for each band-edge.

#### 5.2.6.1. E.U.T. Operation

Operating Environment:					
Temperature:	22.1 °C	Humidity:	55.8 %	Atmospheric Pressure:	103 kPa
Pre test mode:	TM1, TM2, TM3, TM4, TM5, TM6				
Final test mode:	TM1, TM2, TM3, TM4, TM5, TM6				

#### 5.2.6.2. Test Setup Diagram



#### 5.2.6.3. Test Result

Pass

#### 5.2.6.4. Test Data

Please Refer to Appendix for Details.

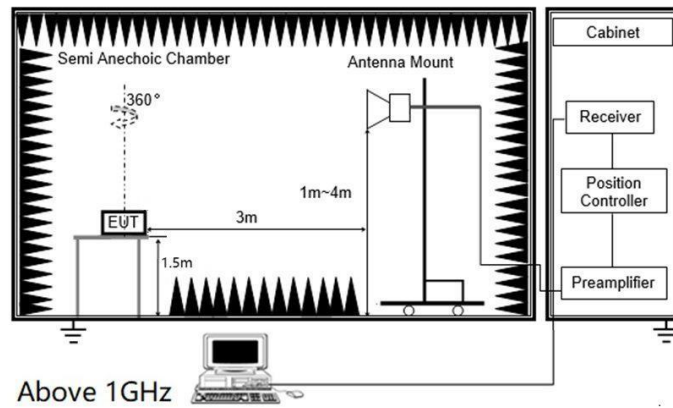
### 5.2.7. Radiated band edge emission

Test Requirement:	Refer to 47 CFR 15.247(d), In addition, radiated emissions which fall in the restricted bands, as defined in § 15.205(a), must also comply with the radiated emission limits specified in § 15.209(a)(see § 15.205(c)).`		
Test Limit:	Frequency (MHz)	Field strength (microvolts/meter)	Measurement distance (meters)
	0.009-0.490	2400/F(kHz)	300
	0.490-1.705	24000/F(kHz)	30
	1.705-30.0	30	30
	30-88	100 **	3
	88-216	150 **	3
	216-960	200 **	3
	Above 960	500	3
<p>** Except as provided in paragraph (g), fundamental emissions from intentional radiators operating under this section shall not be located in the frequency bands 54-72 MHz, 76-88 MHz, 174-216 MHz or 470-806 MHz. However, operation within these frequency bands is permitted under other sections of this part, e.g., §§ 15.231 and 15.241.</p> <p>In the emission table above, the tighter limit applies at the band edges.</p> <p>The emission limits shown in the above table are based on measurements employing a CISPR quasi-peak detector except for the frequency bands 9–90 kHz, 110–490 kHz and above 1000 MHz. Radiated emission limits in these three bands are based on measurements employing an average detector.</p>			
Test Method:	ANSI C63.10-2020 section 6.10		
Procedure:	<p>1. EUT was setup and tested according to ANSI C63.10 .</p> <p>2. The EUT is placed on a turn table which is 1.5 meter above ground. The turn table is rotated 360 degrees to determine the position of the maximum emission level.</p> <p>3. The EUT was positioned such that the distance from antenna to the EUT was 3 meters.</p> <p>4. The antenna is scanned from 1 meter to 4 meters to find out the maximum emission level. This is repeated for both horizontal and vertical polarization of the antenna. In order to find the maximum emission, all of the interface cables were manipulated according to ANSI C63.10 on radiated measurement.</p> <p>5. Use the following spectrum analyzer settings:</p> <p>a) Span shall wide enough to fully capture the emission being measured</p> <p>b) Set RBW=1MHz, VBW=3MHz for &gt;1GHz, Sweep time=auto, Detector=peak, Trace=max hold for Peak measurement</p> <p>For average measurement: use duty cycle correction factor method (DCCF), Averager level = Peak level + DCCF</p>		

#### 5.2.7.1. E.U.T. Operation

Operating Environment:					
Temperature:	22 °C	Humidity:	56.5 %	Atmospheric Pressure:	103 kPa
Pre test mode:	TM1, TM2, TM3				
Final test mode:	TM1, TM2, TM3				

### 5.2.7.2. Test Setup Diagram



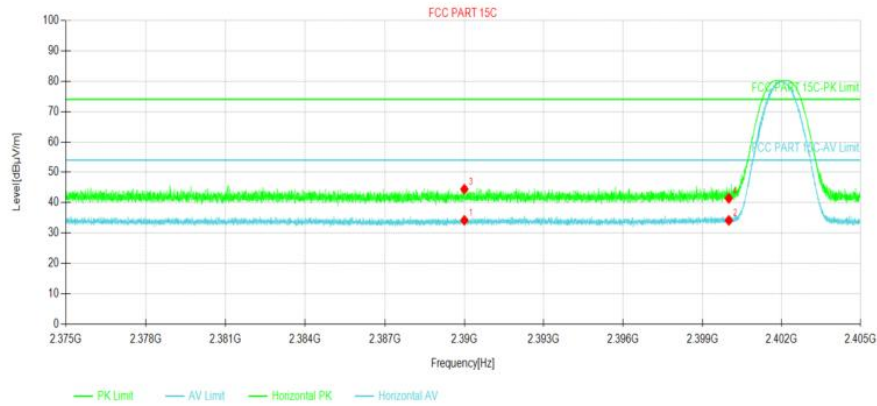
### 5.2.7.3. Test Result

Pass

#### 5.2.7.4. Test Data

Have pre-scan all test mode, found GFSK-DH5 which it was worst case, so only show the worst case' s data on this report.

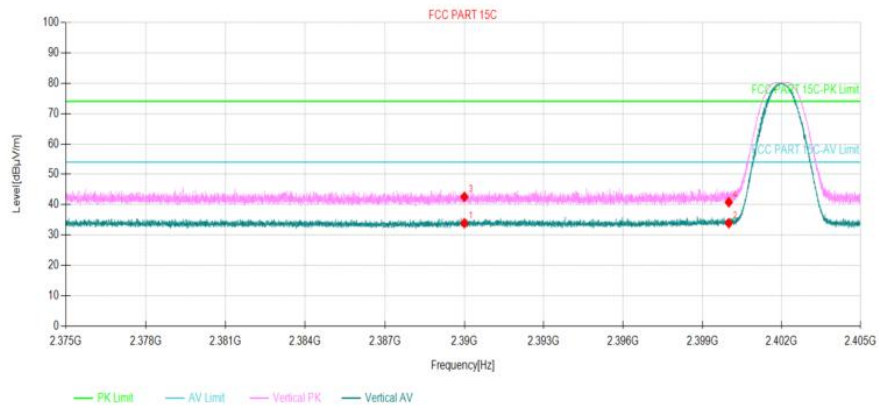
Mode1 / Polarization: Horizontal / CH: L



Suspected Data List								
NO.	Freq. [MHz]	Reading [dBμV/m]	Level [dBμV/m]	Factor [dB]	Limit [dBμV/m]	Margin [dB]	Polarity	Verdict
1	2390	27.65	34.21	6.56	54.00	19.79	Horizontal	PASS
2	2400.00	27.55	34.16	6.61	54.00	19.84	Horizontal	PASS
3	2390	37.90	44.46	6.56	74.00	29.54	Horizontal	PASS
4	2400.00	34.82	41.43	6.61	74.00	32.57	Horizontal	PASS

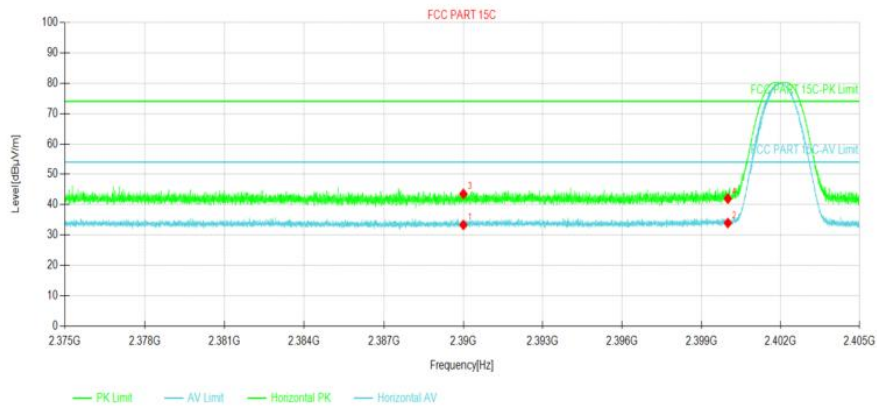


Mode1 / Polarization: Vertical / CH: L



Suspected Data List								
NO.	Freq. [MHz]	Reading [dBμV/m]	Level [dBμV/m]	Factor [dB]	Limit [dBμV/m]	Margin [dB]	Polarity	Verdict
1	2390	27.33	33.89	6.56	54.00	20.11	Vertical	PASS
2	2400.00	27.31	33.92	6.61	54.00	20.08	Vertical	PASS
3	2390	35.98	42.54	6.56	74.00	31.46	Vertical	PASS
4	2400.00	34.20	40.81	6.61	74.00	33.19	Vertical	PASS

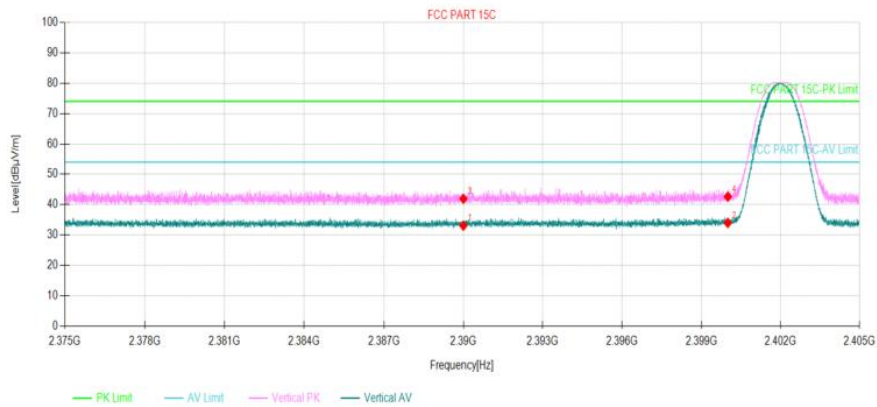
Mode1 / Polarization: Horizontal / CH: H



**Suspected Data List**

NO.	Freq. [MHz]	Reading [dBμV/m]	Level [dBμV/m]	Factor [dB]	Limit [dBμV/m]	Margin [dB]	Polarity	Verdict
1	2390	26.77	33.33	6.56	54.00	20.67	Horizontal	PASS
2	2400.00	27.34	33.95	6.61	54.00	20.05	Horizontal	PASS
3	2390	37.00	43.56	6.56	74.00	30.44	Horizontal	PASS
4	2400.00	35.38	41.99	6.61	74.00	32.01	Horizontal	PASS

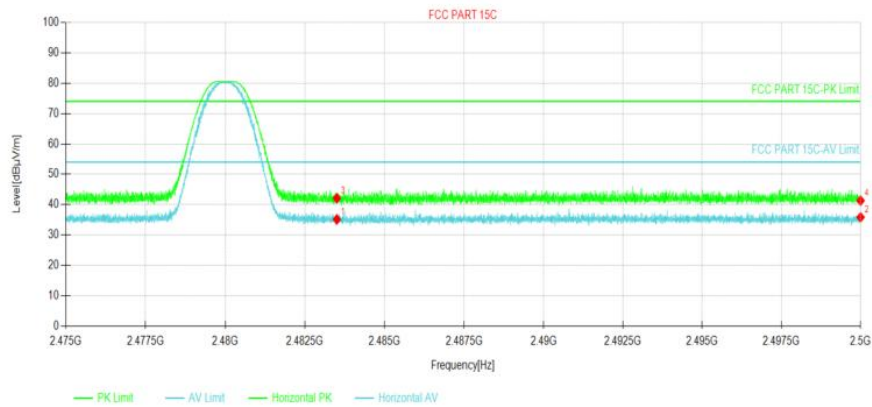
Mode1 / Polarization: Vertical / CH: H



**Suspected Data List**

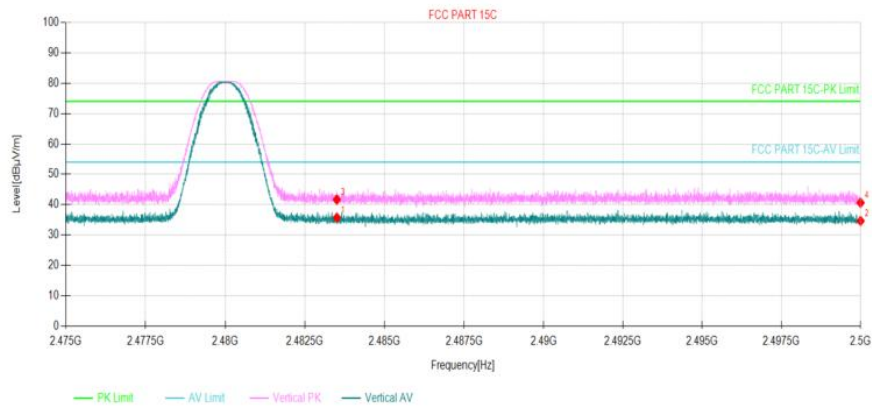
NO.	Freq. [MHz]	Reading [dBμV/m]	Level [dBμV/m]	Factor [dB]	Limit [dBμV/m]	Margin [dB]	Polarity	Verdict
1	2390	26.53	33.09	6.56	54.00	20.91	Vertical	PASS
2	2400.00	27.39	34.00	6.61	54.00	20.00	Vertical	PASS
3	2390	35.39	41.95	6.56	74.00	32.05	Vertical	PASS
4	2400.00	36.04	42.65	6.61	74.00	31.35	Vertical	PASS

Mode2 / Polarization: Horizontal / CH: L



Suspected Data List								
NO.	Freq. [MHz]	Reading [dBμV/m]	Level [dBμV/m]	Factor [dB]	Limit [dBμV/m]	Margin [dB]	Polarity	Verdict
1	2483.5	28.60	35.16	6.56	54.00	18.84	Horizontal	PASS
2	2500	29.30	35.85	6.55	54.00	18.15	Horizontal	PASS
3	2483.5	35.54	42.10	6.56	74.00	31.90	Horizontal	PASS
4	2500	34.79	41.34	6.55	74.00	32.66	Horizontal	PASS

Mode2 / Polarization: Vertical / CH: L



**Suspected Data List**

NO.	Freq. [MHz]	Reading [dBμV/m]	Level [dBμV/m]	Factor [dB]	Limit [dBμV/m]	Margin [dB]	Polarity	Verdict
1	2483.5	29.13	35.69	6.56	54.00	18.31	Vertical	PASS
2	2500	28.09	34.64	6.55	54.00	19.36	Vertical	PASS
3	2483.5	35.11	41.67	6.56	74.00	32.33	Vertical	PASS
4	2500	34.08	40.63	6.55	74.00	33.37	Vertical	PASS

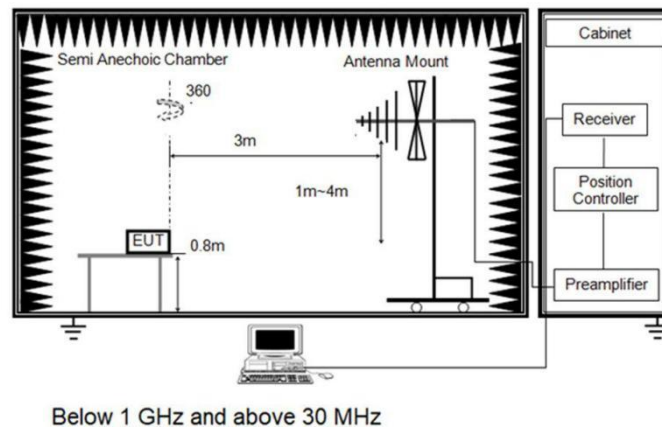
### 5.2.8. Radiated Spurious Emission (below 1GHz)

Test Requirement:	Refer to 47 CFR 15.247(d), In addition, radiated emissions which fall in the restricted bands, as defined in § 15.205(a), must also comply with the radiated emission limits specified in § 15.209(a)(see § 15.205(c)).`		
Test Limit:	Frequency (MHz)	Field strength (microvolts/meter)	Measurement distance (meters)
	0.009-0.490	2400/F(kHz)	300
	0.490-1.705	24000/F(kHz)	30
	1.705-30.0	30	30
	30-88	100 **	3
	88-216	150 **	3
	216-960	200 **	3
	Above 960	500	3
<p>** Except as provided in paragraph (g), fundamental emissions from intentional radiators operating under this section shall not be located in the frequency bands 54-72 MHz, 76-88 MHz, 174-216 MHz or 470-806 MHz. However, operation within these frequency bands is permitted under other sections of this part, e.g., §§ 15.231 and 15.241.</p> <p>In the emission table above, the tighter limit applies at the band edges.</p> <p>The emission limits shown in the above table are based on measurements employing a CISPR quasi-peak detector except for the frequency bands 9–90 kHz, 110–490 kHz and above 1000 MHz. Radiated emission limits in these three bands are based on measurements employing an average detector.</p>			
Test Method:	ANSI C63.10-2020 section 6.6.4		
Procedure:	<p>1. The EUT was setup and tested according to ANSI C63.10.</p> <p>2. The EUT is placed on a turn table which is 0.8 meter above ground for below 1 GHz, and 1.5 m for above 1 GHz. The turn table is rotated 360 degrees to determine the position of the maximum emission level.</p> <p>3. The EUT was set 3 meters from the receiving antenna, which was mounted on the top of a variable height antenna tower.</p> <p>4. For each suspected emission, the EUT was arranged to its worst case and then tune the Antenna tower (from 1 m to 4 m) and turntable (from 0 degree to 360 degrees) to find the maximum reading. A pre-amp and a high pass filter are used for the test in order to get better signal level to comply with the guidelines.</p> <p>5. Set to the maximum power setting and enable the EUT transmit continuously.</p> <p>6. Use the following spectrum analyzer settings</p> <p>a) Span shall wide enough to fully capture the emission being measured;</p> <p>b) RBW=120 kHz, VBW=300 kHz, Sweep=auto, Detector function=peak, Trace=max hold;</p> <p>If the emission level of the EUT measured by the peak detector is 3 dB lower than the applicable limit, the peak emission level will be reported. Otherwise, the emission measurement will be repeated using the quasi-peak detector and reported.</p>		

#### 5.2.8.1. E.U.T. Operation

Operating Environment:					
Temperature:	22 °C	Humidity:	56.5 %	Atmospheric Pressure:	103 kPa
Pre test mode:	TM1, TM2, TM3, TM4, TM5, TM6,TM7,TM8				
Final test mode:	TM1, TM2, TM3, TM4, TM5, TM6,TM7,TM8				

### 5.2.8.2. Test Setup Diagram



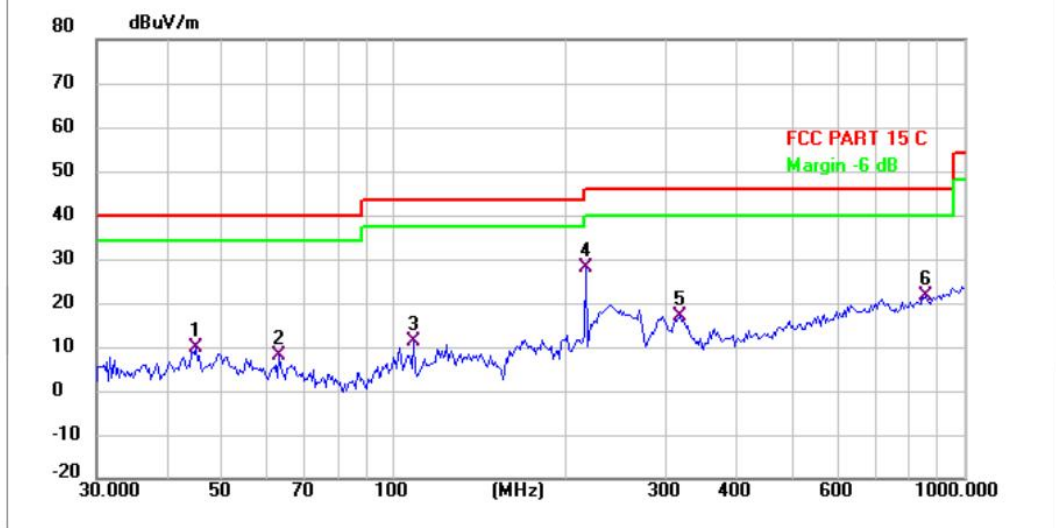
### 5.2.8.3. Test Result

Pass

#### 5.2.8.4. Test Data

Have pre-scan all test channel, found CH00(GFSK DH5) mode which it was worst case, so only show the worst case's data on this report.

Mode1 / Polarization: Horizontal / CH: L



No.	Frequency (MHz)	Reading (dBuV)	Factor (dB/m)	Level (dBuV/m)	Limit (dBuV/m)	Margin (dB)	Detector
1	44.743	39.19	-29.41	9.78	40.00	-30.22	QP
2	62.651	39.36	-31.25	8.11	40.00	-31.89	QP
3	108.267	41.87	-30.58	11.29	43.50	-32.21	QP
4 *	216.783	57.61	-29.58	28.03	46.00	-17.97	QP
5	316.589	43.52	-26.67	16.85	46.00	-29.15	QP
6	857.025	37.04	-15.54	21.50	46.00	-24.50	QP



Mode1 / Polarization: Vertical / CH: L



No.	Frequency (MHz)	Reading (dBuV)	Factor (dB/m)	Level (dBuV/m)	Limit (dBuV/m)	Margin (dB)	Detector
1	31.071	51.71	-31.90	19.81	40.00	-20.19	QP
2	44.120	44.58	-29.59	14.99	40.00	-25.01	QP
3	112.920	53.15	-31.08	22.07	43.50	-21.43	QP
4 *	216.783	59.59	-29.58	30.01	46.00	-15.99	QP
5	323.320	44.67	-26.62	18.05	46.00	-27.95	QP
6	887.610	37.89	-14.94	22.95	46.00	-23.05	QP

Note:

1) For 9 kHz ~ 30 MHz Measurement

The EUT was pre-scanned this frequency band, found the radiated level 20dB lower than the limit, so don't show data on this report.

2) Level= Reading + Factor; Factor =Antenna Factor+ Cable Loss- Preamp Factor

3) Margin = Limit – Level

### 5.2.9. Radiated Spurious Emission (Above 1GHz)

Test Requirement:	In addition, radiated emissions which fall in the restricted bands, as defined in § 15.205(a), must also comply with the radiated emission limits specified in § 15.209(a)(see § 15.205(c)).`		
Test Limit:	Frequency (MHz)	Field strength (microvolts/meter)	Measurement distance (meters)
	0.009-0.490	2400/F(kHz)	300
	0.490-1.705	24000/F(kHz)	30
	1.705-30.0	30	30
	30-88	100 **	3
	88-216	150 **	3
	216-960	200 **	3
	Above 960	500	3
<p>** Except as provided in paragraph (g), fundamental emissions from intentional radiators operating under this section shall not be located in the frequency bands 54-72 MHz, 76-88 MHz, 174-216 MHz or 470-806 MHz. However, operation within these frequency bands is permitted under other sections of this part, e.g., §§ 15.231 and 15.241.</p> <p>In the emission table above, the tighter limit applies at the band edges.</p> <p>The emission limits shown in the above table are based on measurements employing a CISPR quasi-peak detector except for the frequency bands 9–90 kHz, 110–490 kHz and above 1000 MHz. Radiated emission limits in these three bands are based on measurements employing an average detector.</p>			
Test Method:	ANSI C63.10-2020 section 6.6.4		
Procedure:	<p>1. The EUT was setup and tested according to ANSI C63.10.</p> <p>2. The EUT is placed on a turn table which is 0.8 meter above ground for below 1 GHz, and 1.5 m for above 1 GHz. The turn table is rotated 360 degrees to determine the position of the maximum emission level.</p> <p>3. The EUT was set 3 meters from the receiving antenna, which was mounted on the top of a variable height antenna tower.</p> <p>4. For each suspected emission, the EUT was arranged to its worst case and then tune the Antenna tower (from 1 m to 4 m) and turntable (from 0 degree to 360 degrees) to find the maximum reading. A pre-amp and a high pass filter are used for the test in order to get better signal level to comply with the guidelines.</p> <p>5. Set to the maximum power setting and enable the EUT transmit continuously.</p> <p>6. Use the following spectrum analyzer settings</p> <p>a) Span shall wide enough to fully capture the emission being measured;</p> <p>b) Set RBW=1MHz, VBW=3MHz for &gt;1GHz, Sweep time=auto, Detector=peak, Trace=max hold for Peak measurement</p> <p>For average measurement: use duty cycle correction factor method (DCCF)Averager level = Peak level + DCCF</p>		

#### 5.2.9.1. E.U.T. Operation

Operating Environment:					
Temperature:	22 °C	Humidity:	56.5 %	Atmospheric Pressure:	103 kPa
Pre test mode:	TM1, TM2, TM3, TM4, TM5, TM6,TM7,TM8				
Final test mode:	TM1, TM2, TM3, TM4, TM5, TM6,TM7,TM8				

### 5.2.9.2. Test Setup Diagram



### 5.2.9.3. Test Result

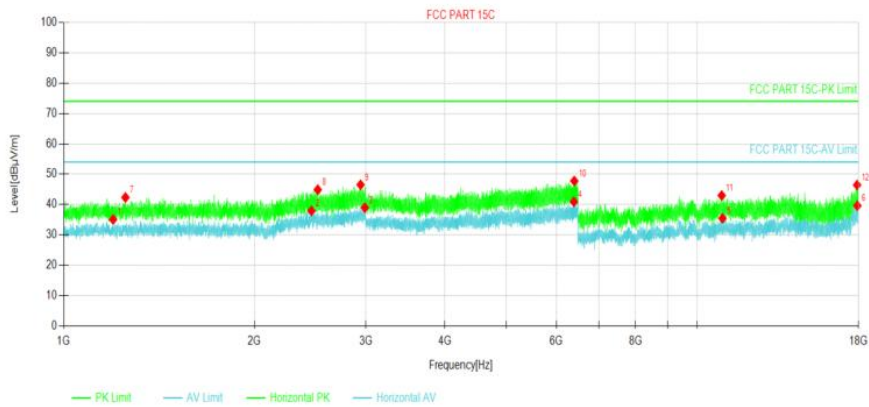
Pass

#### 5.2.9.4. Test Data

Note:

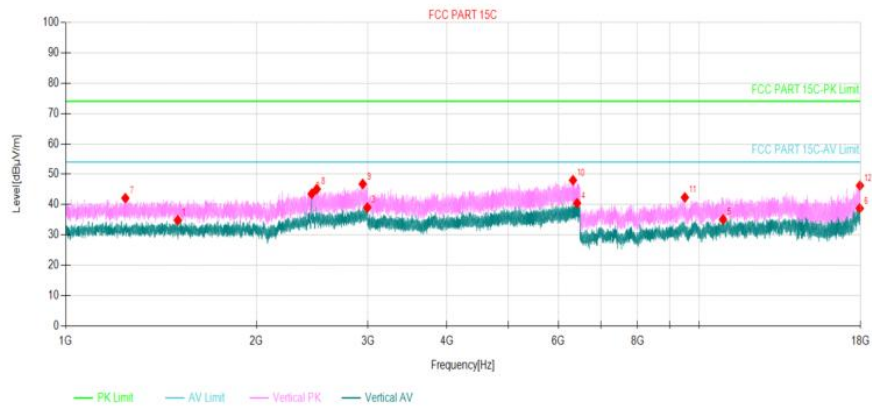
1. In order to prevent the amplifier from saturating, we add a band-stop filter that filters out the main frequency.
2. 18GHz-25GHz is the background of the site, there is no radiated spurious.
3. Have pre-scan all test mode, found GFSK-DH5 which it was worst case, so only show the worst case' s data on this report.

Mode1 / Polarization: Horizontal / CH: L



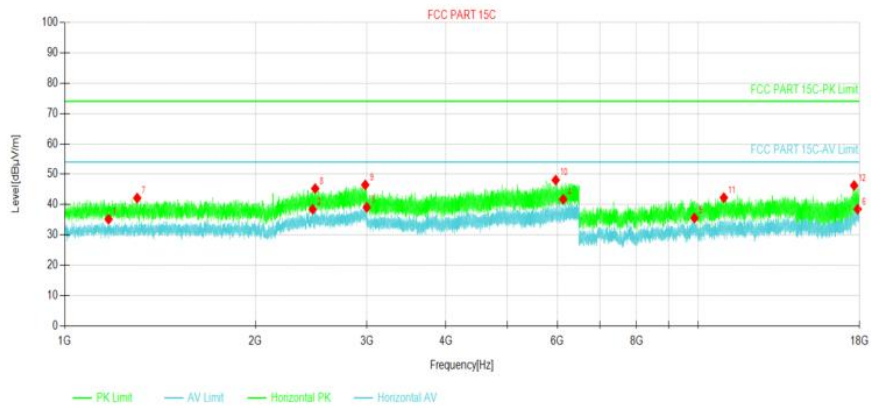
Suspected Data List								
NO.	Freq. [MHz]	Reading [dBμV/m]	Level [dBμV/m]	Factor [dB]	Limit [dBμV/m]	Margin [dB]	Polarity	Verdict
1	1196.8	33.35	35.10	1.75	54.00	18.90	Horizontal	PASS
2	2461.8	30.48	37.93	7.45	54.00	16.07	Horizontal	PASS
3	2989	29.09	38.97	9.88	54.00	15.03	Horizontal	PASS
4	6393.25	34.44	40.93	6.49	54.00	13.07	Horizontal	PASS
5	10975.8	30.88	35.47	4.59	54.00	18.53	Horizontal	PASS
6	17921.8	26.59	39.62	13.03	54.00	14.38	Horizontal	PASS
7	1251.6	40.24	42.34	2.10	74.00	31.66	Horizontal	PASS
8	2519	37.27	44.92	7.65	74.00	29.08	Horizontal	PASS
9	2943.4	37.03	46.52	9.49	74.00	27.48	Horizontal	PASS
10	6403.05	41.26	47.79	6.53	74.00	26.21	Horizontal	PASS
11	10942.4	38.34	43.00	4.66	74.00	31.00	Horizontal	PASS
12	17902.2	33.54	46.45	12.91	74.00	27.55	Horizontal	PASS

Mode1 / Polarization: Vertical / CH: L



Suspected Data List								
NO.	Freq. [MHz]	Reading [dBμV/m]	Level [dBμV/m]	Factor [dB]	Limit [dBμV/m]	Margin [dB]	Polarity	Verdict
1	1503.2	31.63	34.86	3.23	54.00	19.14	Vertical	PASS
2	2446.4	36.21	43.55	7.34	54.00	10.45	Vertical	PASS
3	2994.6	29.11	39.03	9.92	54.00	14.97	Vertical	PASS
4	6420.55	33.92	40.45	6.53	54.00	13.55	Vertical	PASS
5	10918.3	30.38	35.10	4.72	54.00	18.90	Vertical	PASS
6	17945.9	25.57	38.76	13.19	54.00	15.24	Vertical	PASS
7	1242.2	40.06	42.10	2.04	74.00	31.90	Vertical	PASS
8	2491.4	37.42	45.10	7.68	74.00	28.90	Vertical	PASS
9	2945.2	37.28	46.78	9.50	74.00	27.22	Vertical	PASS
10	6325.35	41.97	48.01	6.04	74.00	25.99	Vertical	PASS
11	9501.5	39.19	42.36	3.17	74.00	31.64	Vertical	PASS
12	17959.7	32.99	46.26	13.27	74.00	27.74	Vertical	PASS

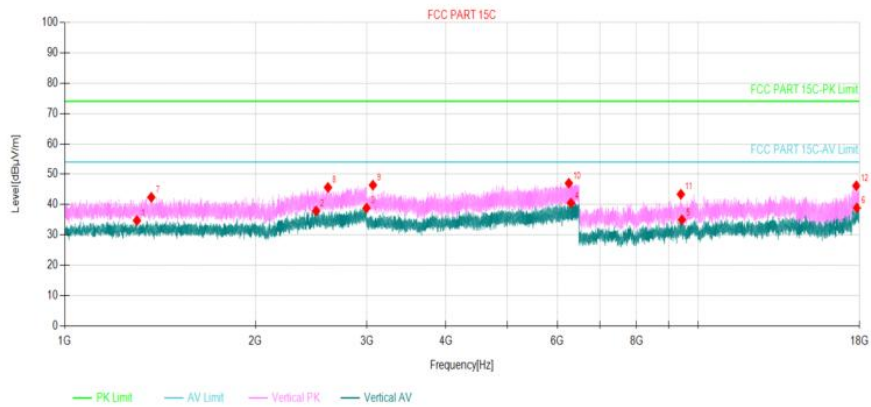
Mode1 / Polarization: Horizontal / CH: M



**Suspected Data List**

NO.	Freq. [MHz]	Reading [dBμV/m]	Level [dBμV/m]	Factor [dB]	Limit [dBμV/m]	Margin [dB]	Polarity	Verdict
1	1173	33.57	35.16	1.59	54.00	18.84	Horizontal	PASS
2	2464.4	30.99	38.46	7.47	54.00	15.54	Horizontal	PASS
3	2999	29.11	39.07	9.96	54.00	14.93	Horizontal	PASS
4	6126.2	36.28	41.73	5.45	54.00	12.27	Horizontal	PASS
5	9874.1	32.14	35.55	3.41	54.00	18.45	Horizontal	PASS
6	17878.1	25.55	38.50	12.95	54.00	15.50	Horizontal	PASS
7	1301.6	39.74	42.15	2.41	74.00	31.85	Horizontal	PASS
8	2486.4	37.64	45.28	7.64	74.00	28.72	Horizontal	PASS
9	2983.2	36.66	46.49	9.83	74.00	27.51	Horizontal	PASS
10	5962.4	42.96	48.08	5.12	74.00	25.92	Horizontal	PASS
11	10988.4	37.71	42.27	4.56	74.00	31.73	Horizontal	PASS
12	17645.8	34.06	46.29	12.23	74.00	27.71	Horizontal	PASS

Mode1 / Polarization: Vertical / CH: M

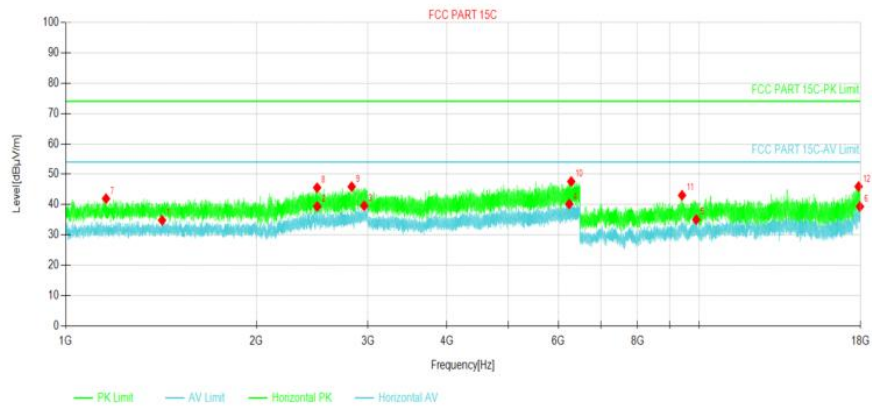


**Suspected Data List**

NO.	Freq. [MHz]	Reading [dBμV/m]	Level [dBμV/m]	Factor [dB]	Limit [dBμV/m]	Margin [dB]	Polarity	Verdict
1	1300.4	32.33	34.74	2.41	54.00	19.26	Vertical	PASS
2	2494.4	30.22	37.92	7.70	54.00	16.08	Vertical	PASS
3	2996.6	28.93	38.87	9.94	54.00	15.13	Vertical	PASS
4	6300.85	34.62	40.51	5.89	54.00	13.49	Vertical	PASS
5	9434.8	31.90	34.99	3.09	54.00	19.01	Vertical	PASS
6	17828.6	25.85	38.91	13.06	54.00	15.09	Vertical	PASS
7	1370.2	39.62	42.39	2.77	74.00	31.61	Vertical	PASS
8	2604.8	38.35	45.64	7.29	74.00	28.36	Vertical	PASS
9	3067.2	49.76	46.41	-3.35	74.00	27.59	Vertical	PASS
10	6254.65	41.27	47.04	5.77	74.00	26.96	Vertical	PASS
11	9399.15	40.36	43.40	3.04	74.00	30.60	Vertical	PASS
12	17790.7	33.19	46.20	13.01	74.00	27.80	Vertical	PASS



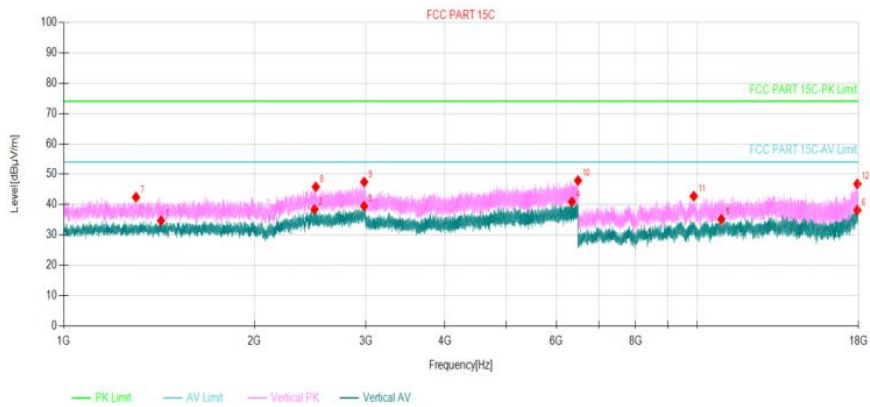
Mode1 / Polarization: Horizontal / CH: H



Suspected Data List								
NO.	Freq. [MHz]	Reading [dBμV/m]	Level [dBμV/m]	Factor [dB]	Limit [dBμV/m]	Margin [dB]	Polarity	Verdict
1	1420	31.84	34.83	2.99	54.00	19.17	Horizontal	PASS
2	2496	31.66	39.37	7.71	54.00	14.63	Horizontal	PASS
3	2961	29.95	39.59	9.64	54.00	14.41	Horizontal	PASS
4	6240.65	34.43	40.17	5.74	54.00	13.83	Horizontal	PASS
5	9904	31.59	35.04	3.45	54.00	18.96	Horizontal	PASS
6	17958.6	26.07	39.34	13.27	54.00	14.66	Horizontal	PASS
7	1158	40.48	41.96	1.48	74.00	32.04	Horizontal	PASS
8	2495	37.88	45.58	7.70	74.00	28.42	Horizontal	PASS
9	2829.2	37.27	45.90	8.63	74.00	28.10	Horizontal	PASS
10	6285.8	41.75	47.60	5.85	74.00	26.40	Horizontal	PASS
11	9406.05	40.02	43.07	3.05	74.00	30.93	Horizontal	PASS
12	17870.0	32.99	45.96	12.97	74.00	28.04	Horizontal	PASS



Mode1 / Polarization: Vertical / CH: H



Suspected Data List								
NO.	Freq. [MHz]	Reading [dBuV/m]	Level [dBuV/m]	Factor [dB]	Limit [dBuV/m]	Margin [dB]	Polarity	Verdict
1	1424.6	31.70	34.71	3.01	54.00	19.29	Vertical	PASS
2	2489	30.72	38.38	7.66	54.00	15.62	Vertical	PASS
3	2980.8	29.68	39.49	9.81	54.00	14.51	Vertical	PASS
4	6346.35	34.72	40.90	6.18	54.00	13.10	Vertical	PASS
5	10926.3	30.46	35.16	4.70	54.00	18.84	Vertical	PASS
6	17925.2	25.10	38.16	13.06	54.00	15.84	Vertical	PASS
7	1300.8	40.03	42.44	2.41	74.00	31.56	Vertical	PASS
8	2500.8	38.09	45.83	7.74	74.00	28.17	Vertical	PASS
9	2982.4	37.62	47.44	9.82	74.00	26.56	Vertical	PASS
10	6488.45	41.39	47.92	6.53	74.00	26.08	Vertical	PASS
11	9885.6	39.33	42.76	3.43	74.00	31.24	Vertical	PASS
12	17924.1	33.77	46.82	13.05	74.00	27.18	Vertical	PASS

Note:

1) Level= Reading + Factor; Factor =Antenna Factor+ Cable Loss- Preamp Factor

2) Margin = Limit – Level

3) Average measurement was not performed if peak level is lower than average limit (54dBuV/m) for above 1GHz.

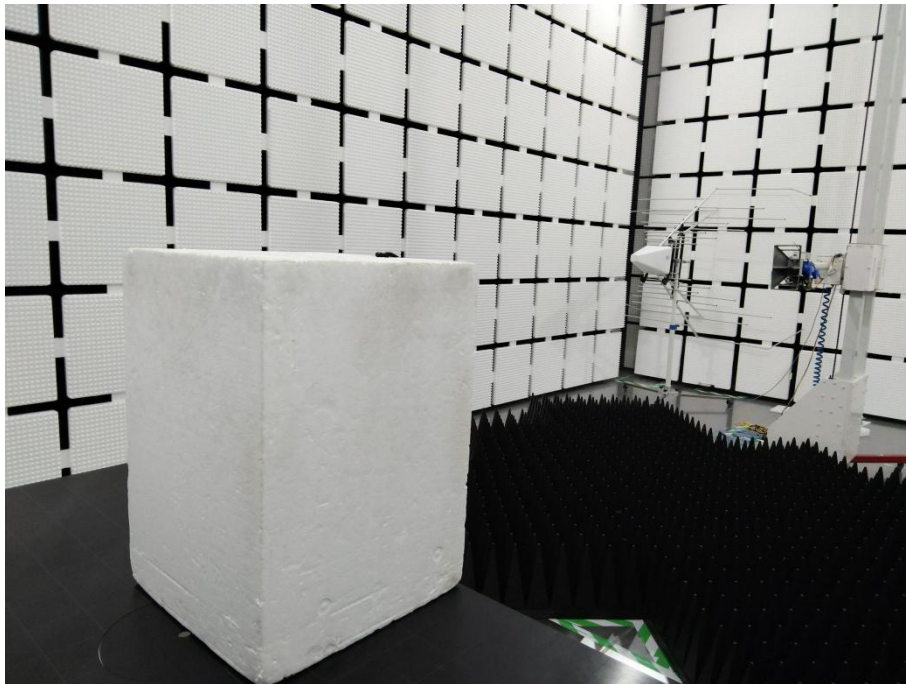
## 6. TEST SETUP PHOTOS

Conducted Emission at AC power line

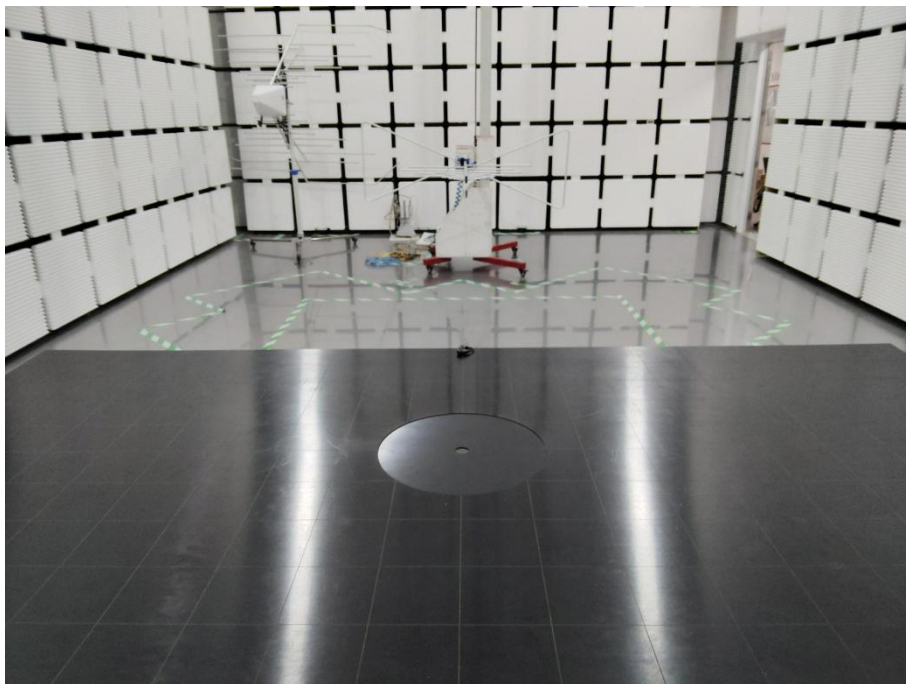


Radiated band edge emission  
Radiated Spurious Emission (Above 1GHz)





Radiated Spurious Emission (below 1GHz)





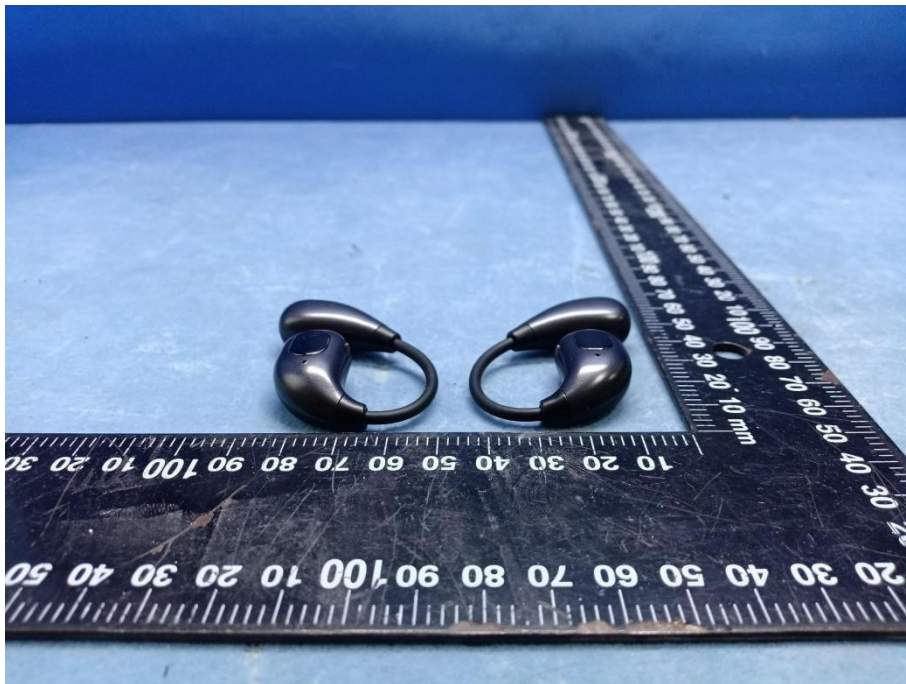
## 7. EXTERNAL AND INTERNAL PHOTOS

### 7.1. External Photos









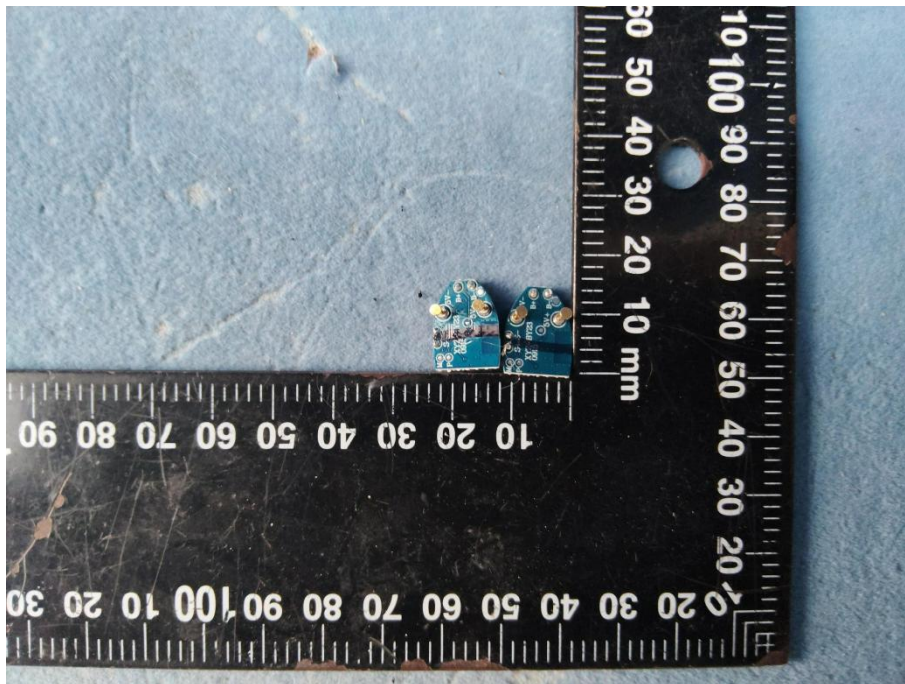
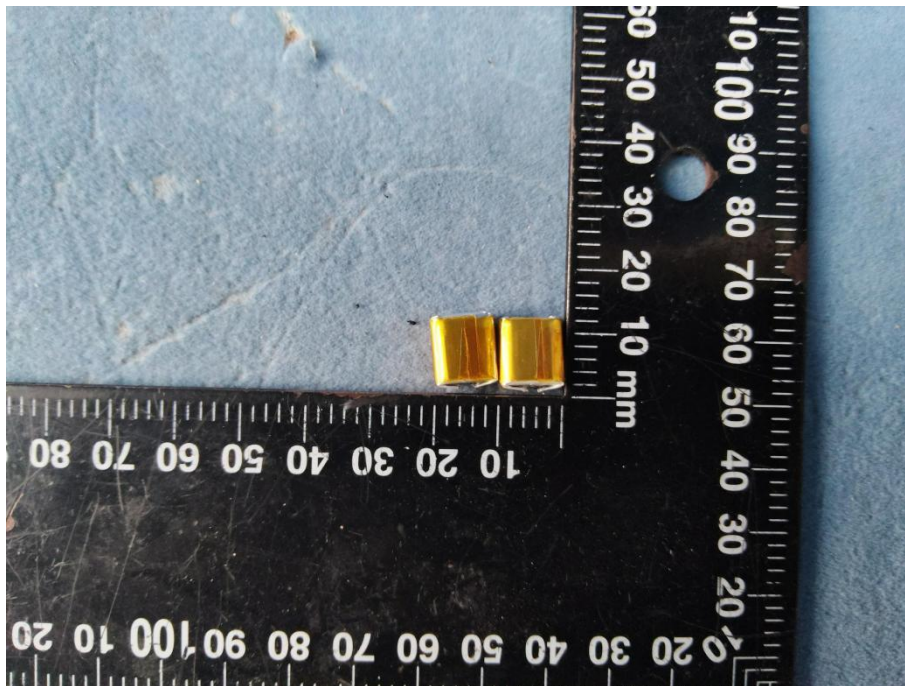


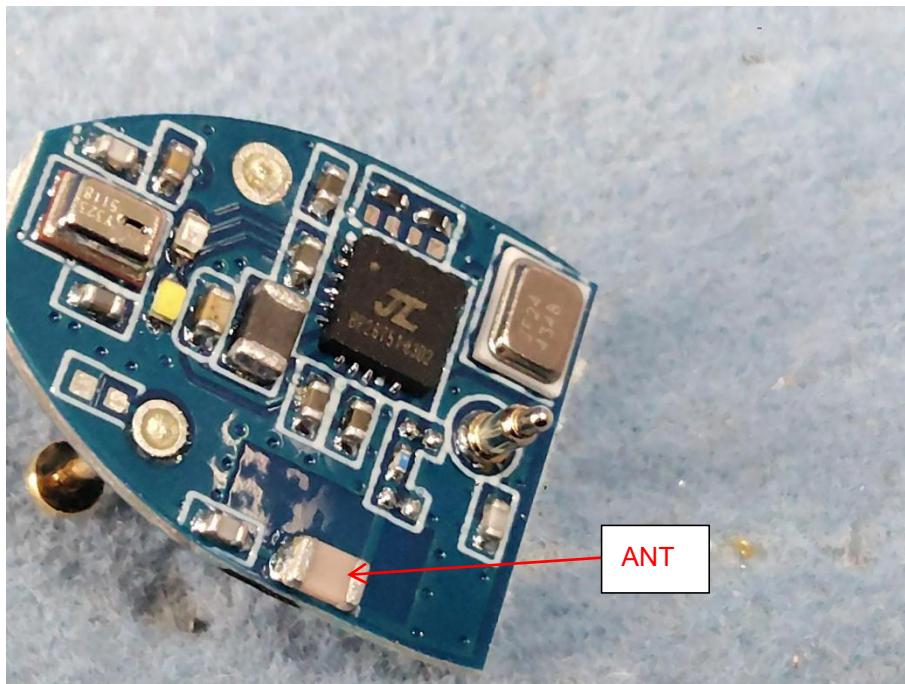
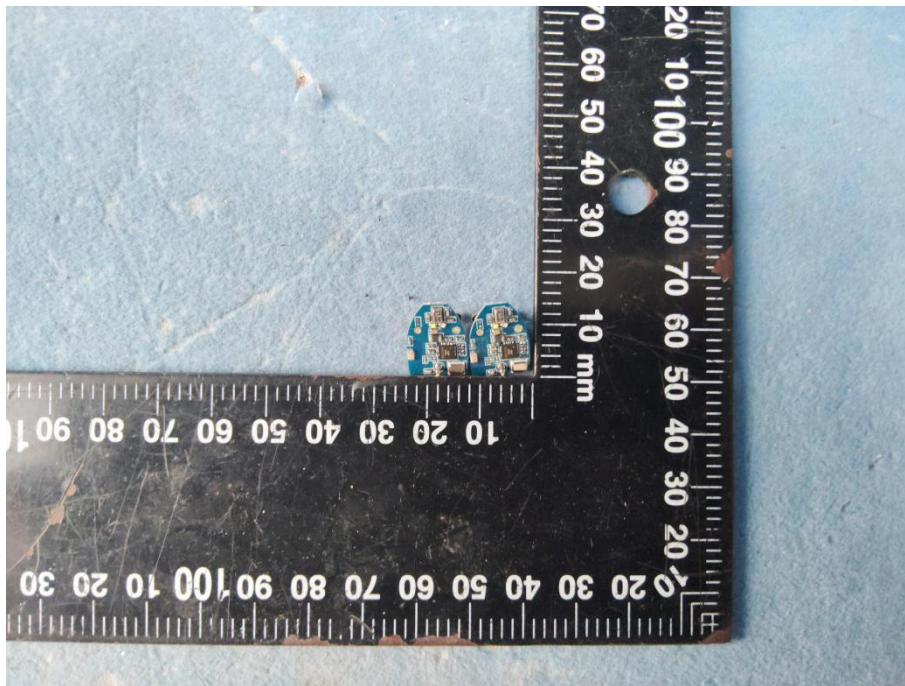


## 7.2. Internal Photos









## 8. Appendix Report