

WWW.JURASSICWORLD.COM

FOR MORE KAMIGAMI:  
WWW.KAMIGAMIROBOTS.COM

MADE IN CHINA. FABRIQUE EN CHINE.  
Mattel Canada Inc., Mississauga, Ontario L5R 3W2

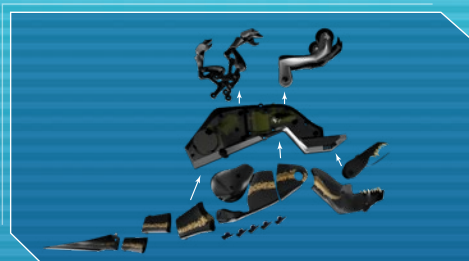
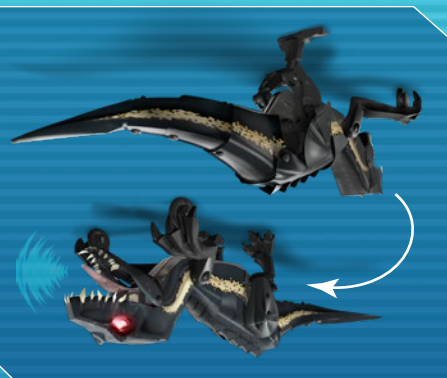
Sold separately, subject to availability. Colors and decorations may vary.



Use the app to play and  
unlock new abilities and  
mutations.

Connect to the mobile app to  
customize your movements,  
interactions, lights and sounds.

Build your dinosaur.  
Just fold and snap together.  
No tools required.



EVOLVE

CODE

CONSTRUCT

KAMIGAMI  
ROBOTS



KAMIGAMI  
ROBOTS



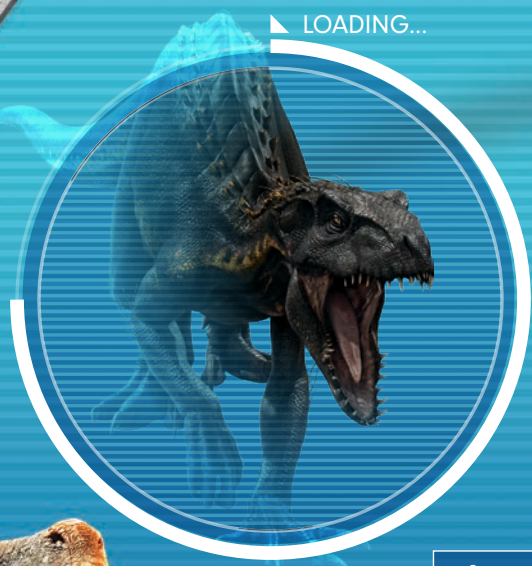
KAMIGAMI  
ROBOTS

**CONTAINS:**  
1 Kamigami Robot Kit

- Core Module
- Raptor Shell Sheet
- Arm Assembly x 2
- Leg Assembly x 2
- Snap-Rivets x 35
- USB Cable
- Quick-Start Guide
- Non-replaceable  
3.7V 250 mAh  
Lithium Polymer  
rechargeable  
battery.
- Dispose of product  
safely.
- Dispose of battery  
safely.



**BEWARE:**  
LIFE-LIKE DINOSAUR  
MOVEMENT.



**CAUTION:**  
DINOSAURS ARE DANGEROUS CREATURES.  
CONSTRUCT ROBOT AT YOUR OWN RISK.

CONSTRUCT | CODE | EVOLVE

KAMIGAMI  
ROBOTS



UNASSEMBLED



**SENSOR ARRAY**  
Includes 3-axis accelerometer,  
3-axis gyroscope, IR transmitter,  
IR sensor & tri-colored LEDs.

**BIO-INSPIRED MOTION**  
Anatomically correct legs give  
life-like dinosaur movement.



**RECHARGEABLE BATTERY**  
45 minutes of charge time for  
upto 25 minutes of playtime.

**BLUETOOTH 2.4GHz**  
Control from your smartphone  
or tablet with the free iOS  
and Android app.



INDORAPTOR

AGE 8+



KAMIGAMI  
ROBOTS

KAMIGAMI  
ROBOTS



? service.mattel.com

CONFORMS TO THE SAFETY  
REQUIREMENTS OF ASTM F963.

**Device Requirements**

- Apple iPhone 4S or newer, iPad 3 or newer, iPad mini or newer, and iPod touch (5th generation) or newer. App requires iOS 9 or higher.
- Android App requires Android 5.0 or higher and a device that supports Bluetooth Smart (4.0).
- Amazon App requires Fire OS 5.0 or higher and a device that supports Bluetooth Smart (4.0).

Learn more about device requirements at  
<http://kamigamirobots.com/app>

Apple and the Apple logo are trademarks of Apple Inc. registered in the U.S. and other countries. App Store is a service mark of Apple Inc.

Android and Google Play are trademarks of Google Inc. Bluetooth® and Bluetooth® Smart wordmark and logos are owned by Bluetooth SIG, Inc. and any use of such marks by Dash Robotics, Inc. is under license.

Amazon and all related logos are trademarks of Amazon.com, Inc. or its affiliates.

Copyright © 2017 Dash Robotics, Inc. All Rights Reserved. Patents Pending.

Kamigami™ and the Kamigami logo are trademarks of Dash Robotics, Inc. All other trademarks mentioned are the property of their respective owners. Dash Robotics, Inc. reserves the right to amend or improve the product design, application software and/or user guide without any restriction or obligation to notify users.

**DESIGNED IN CALIFORNIA. MADE IN CHINA**

©2017 Mattel. MATTEL and associated trademarks and trade dress are owned by Mattel. ® and ™ designate U.S. trademarks of Mattel, except as noted. Consumer Services - Mattel, Inc., 636 Girard Avenue, East Aurora, NY 14052, U.S.A. 1-877-219-8335.



Jurassic World is a trademark and copyright of Universal Studios and Amblin Entertainment, Inc. Licensed by Universal Studios. All Rights Reserved.



Asst. FXG10  
FWN70



FWN70-0910-DOM

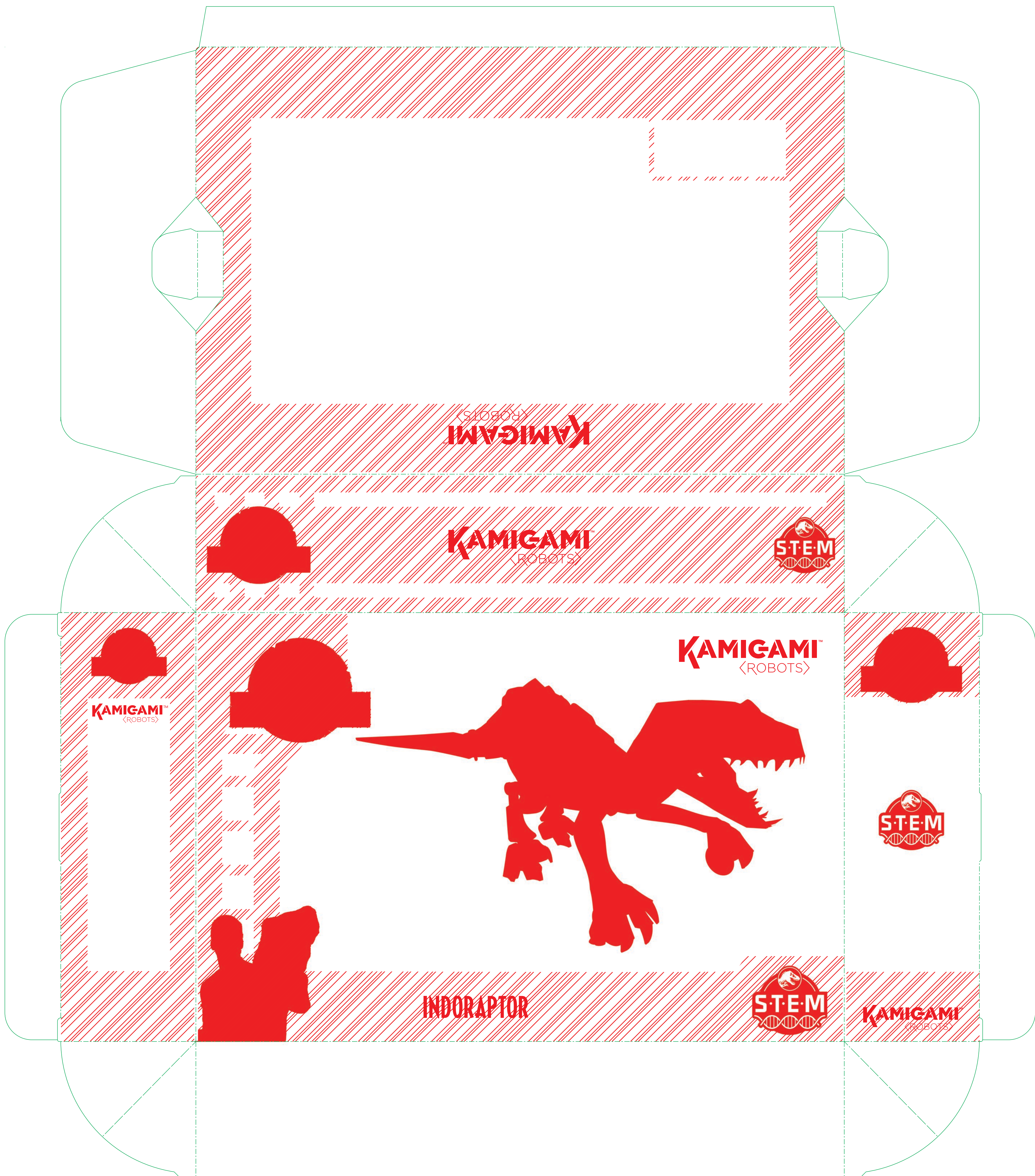


ITEM NO.: Asst. FXG10	LANG.: DOM	GRAPHIC DESIGNER: Eric	PROOF APPROVAL
PART CODE: FWN70-0910		PI ENGINEER:	SIGN OFF
ITEM NAME: Kamigami Jurassic World		PROJECT ENGINEER:	(GRAPHIC):
TOY YEAR: 2018		CS VENDOR: IASIK	
PKG. SIZE: 12" x 2.56" x 8"	VER.:	SOFTWARE: Illustrator CC	
PKG. SPEC: Closed Box		COLOR PROFILE/LPI: Mag CCNB / 175lpi	
BLANK SIZE: 20.5" x 24.5"		CS DATE: 11/24/2017	DATE:

**NOTES TO PRINTER:** Proofs accurate for process color only. All spot colors must follow PMS Color Formula Guide or color swatch specified.







Matte UV for background