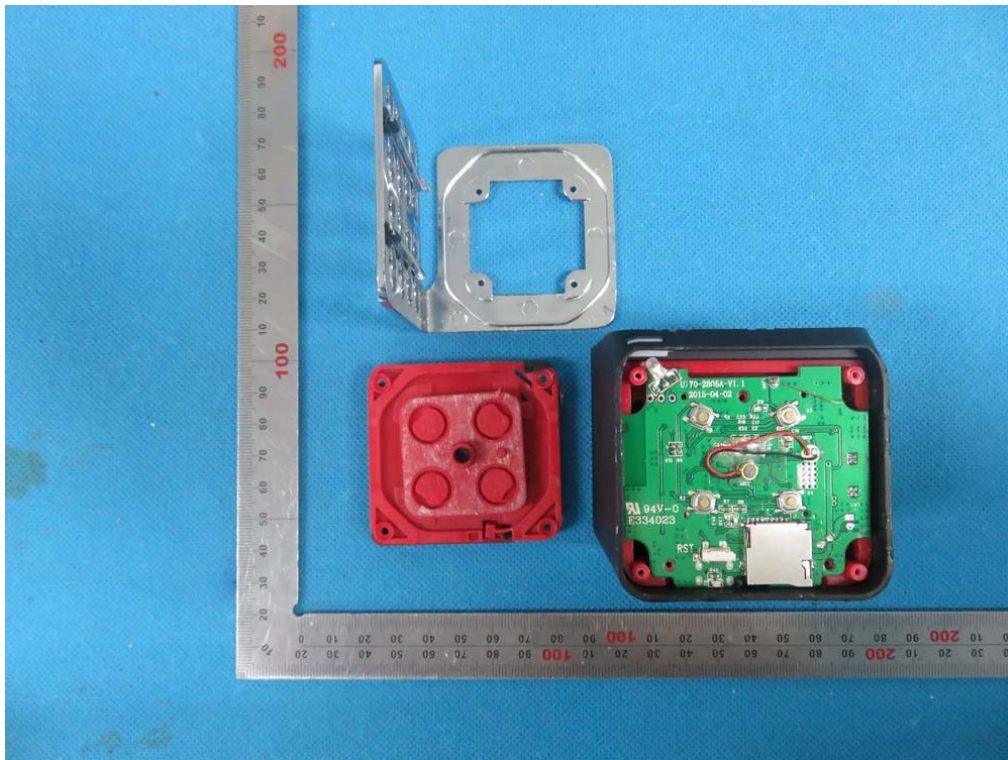
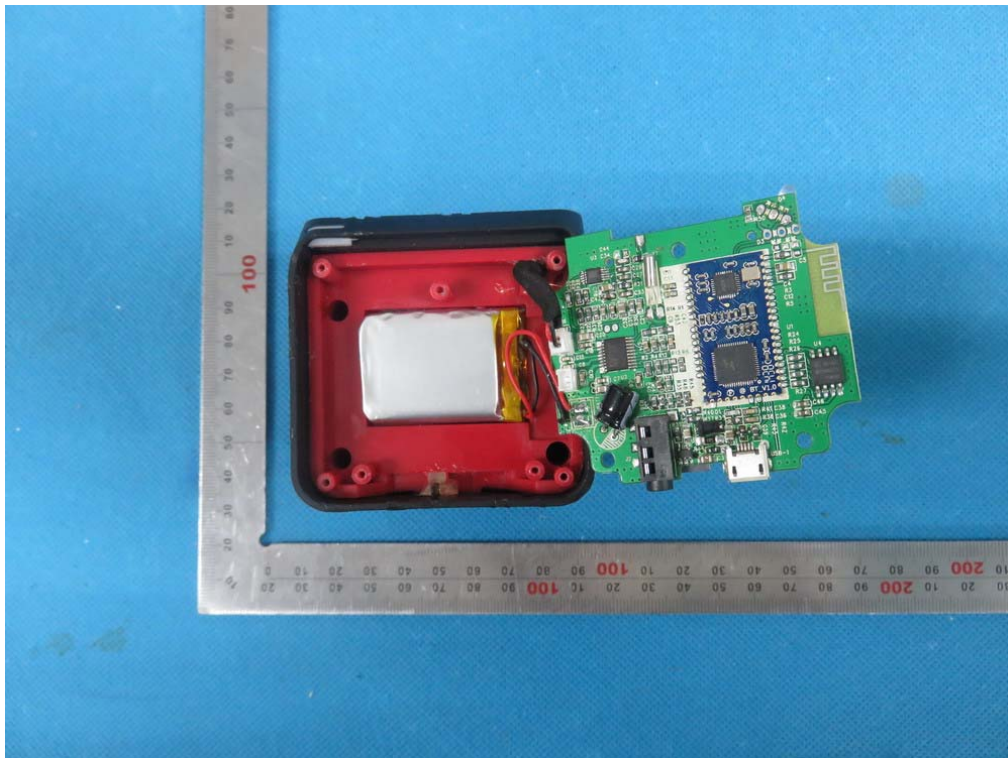


Internal Photos

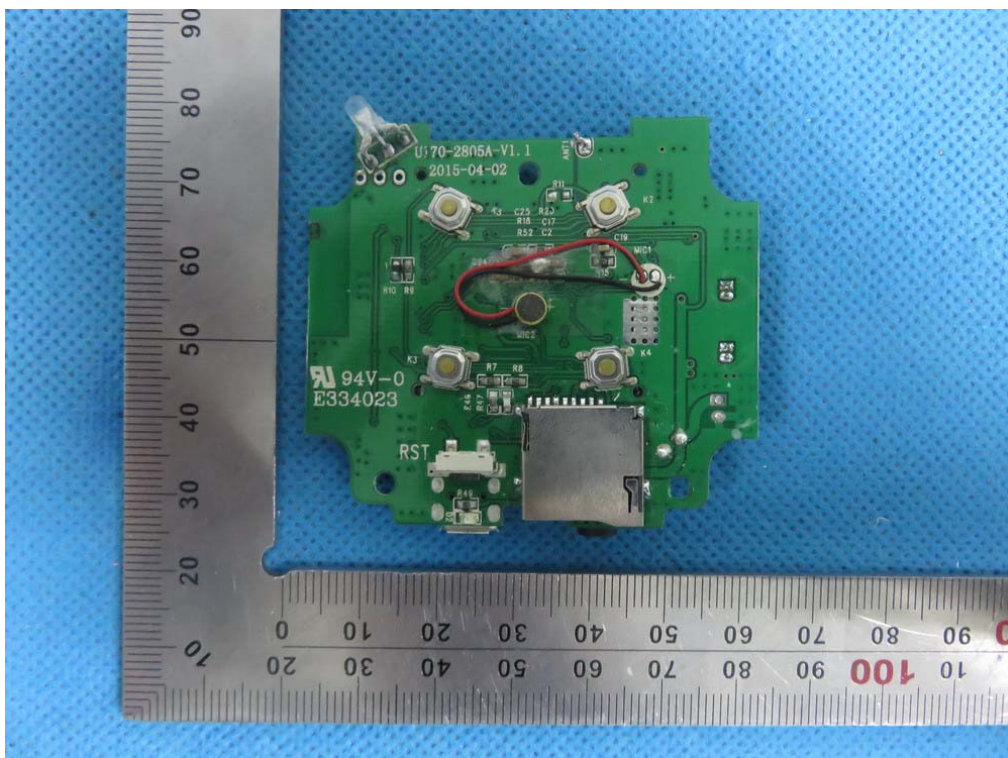
OPEN VIEW OF EUT-1



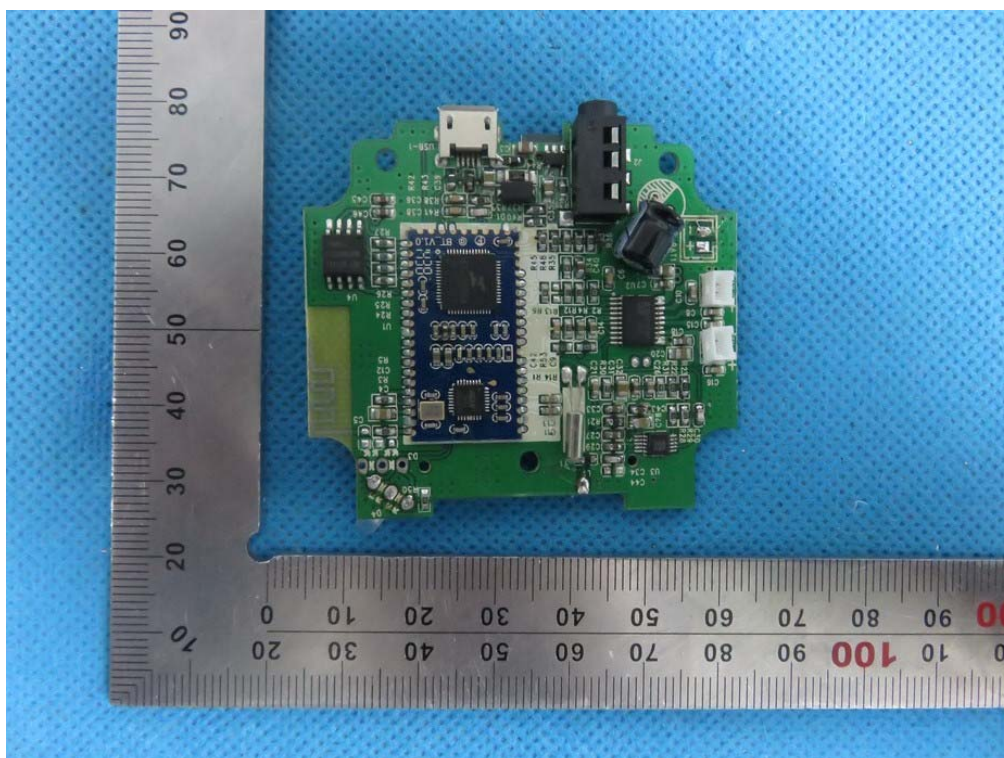
OPEN VIEW OF EUT-2



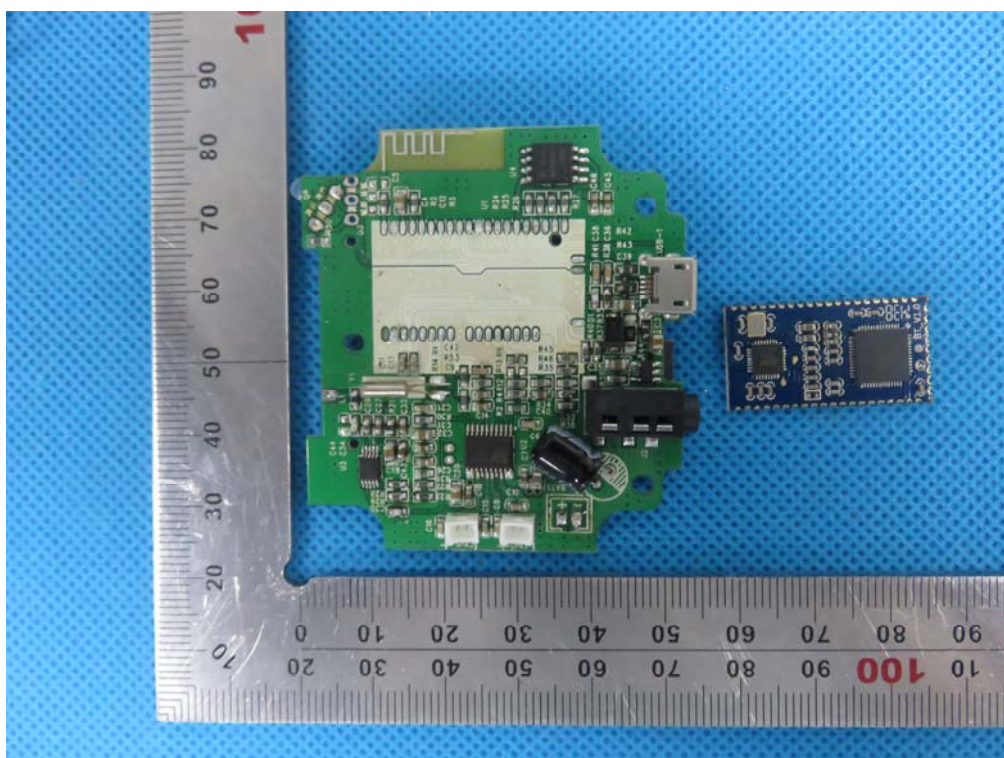
INTERNAL VIEW OF EUT-1



INTERNAL VIEW OF EUT-2



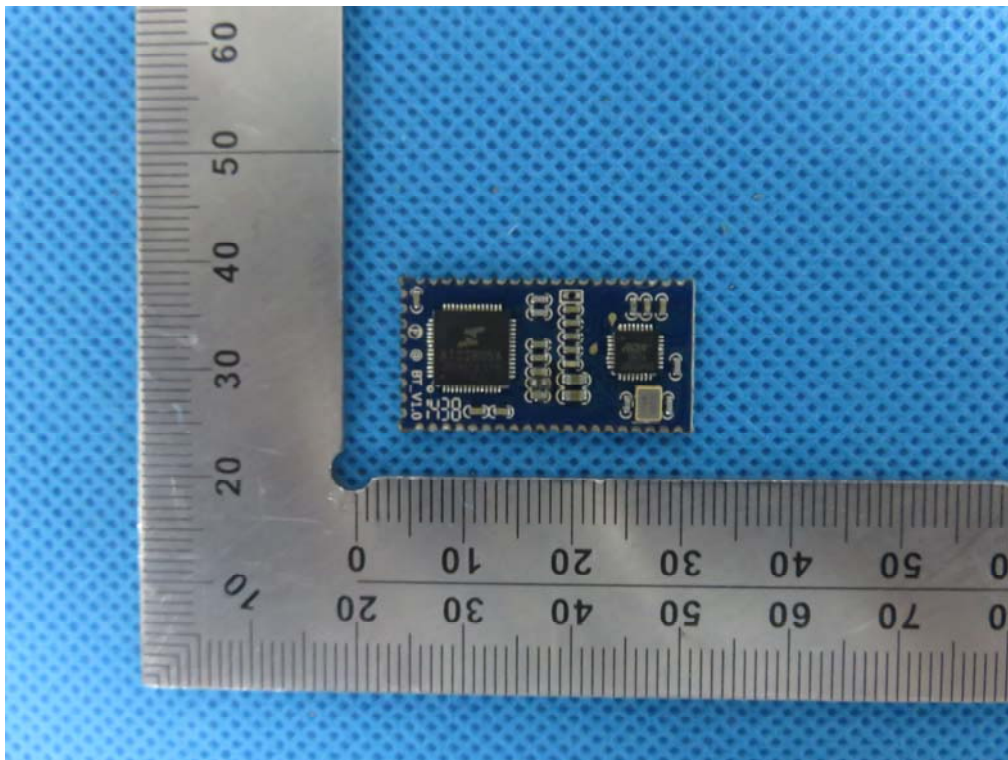
INTERNAL VIEW OF EUT-3



BT Antenna

This image shows a close-up of the BT module on the PCB. A red box highlights the antenna, which is a small, rectangular, metallic structure. The module is populated with various components, including a black integrated circuit (IC) labeled 'U1', several resistors (R24, R25, R26, R27, R28, R29, R30, R31, R32, R33, R34, R35, R36, R37, R38, R39, R40, R41, R42, R43, R44, R45, R46, R47, R48, R49, R50), capacitors (C2, C3, C4, C5, C6, C7, C8, C9, C10, C11, C12, C13, C14, C15, C16, C17, C18, C19, C20, C21, C22, C23, C24, C25, C26, C27, C28, C29, C30, C31, C32, C33, C34, C35, C36, C37, C38, C39, C40, C41, C42, C43, C44, C45, C46, C47, C48, C49, C50), and a small black component labeled 'D3'. The module is connected to the PCB via a series of gold-plated pins.

INTERNAL VIEW OF EUT-6



INTERNAL VIEW OF EUT-7

