



**SGS-CSTC Standards Technical Services Co., Ltd.
Shenzhen Branch**

No. 1 Workshop, M-10, Middle Section, Science & Technology Park,
Shenzhen, China 518057

Telephone: +86 (0) 755 2601 2053
Fax: +86 (0) 755 2671 0594
Email: ee.shenzhen@sgs.com

Report No.: SZEM180400354502

Page: 1 of 17

Human Exposure Report

Application No.: SZEM1804003545CR
Applicant/ Manufacturer: Huizhou Artsun Industrial Company Limited
Address of Applicant/ Manufacturer: No.2, Floor 14th, Unit one, Ruihe Commercial Square, No.1 Yandayi Road, Henan'an District, Huizhou, 516007, China
Factory: HUIZHOU VOLANT ROC ELECTRONICS TECH CO.,LTD
Address of Factory: C BUILDING, QIANLI INDUSTRIAL AREA, SANDONG TOWN, HUIZHOU CITY, GUANGDONG PROVINCE, CHINA
Equipment Under Test (EUT):
EUT Name: GRAVITY PHONE HOLDER & WIRELESS CHARGER 2-IN-1 KIT
Model No.: VCW-502K
FCC ID: 2ALU4DX502A03
Trade Mark: AUTO DRIVE
Standards: 47 CFR PART 1, Subpart I, Section 1.1310
Date of Receipt: 2018-05-21
Date of Test: 2018-05-24 to 2018-05-25
Date of Issue: 2018-06-01

Test Result :	Pass*
----------------------	--------------

* In the configuration tested, the EUT complied with the standards specified above.



Keny Xu
EMC Laboratory Manager

The manufacturer should ensure that all products in series production are in conformity with the product sample detailed in this report. If the product in this report is used in any configuration other than that detailed in the report, the manufacturer must ensure the new system complies with all relevant standards. Any mention of SGS International Electrical Approvals or testing done by SGS International Electrical Approvals in connection with, distribution or use of the product described in this report must be approved by SGS International Electrical Approvals in writing.

This document is issued by the Company subject to its General Conditions of Service printed overleaf, available on request or accessible at <http://www.sgs.com/en/Terms-and-Conditions.aspx> and, for electronic format documents, subject to Terms and Conditions for Electronic Documents at <http://www.sgs.com/en/Terms-and-Conditions/Terms-e-Document.aspx>. Attention is drawn to the limitation of liability, indemnification and jurisdiction issues defined therein. Any holder of this document is advised that information contained hereon reflects the Company's findings at the time of its intervention only and within the limits of Client's instructions, if any. The Company's sole responsibility is to its Client and this document does not exonerate parties to a transaction from exercising all their rights and obligations under the transaction documents. This document cannot be reproduced except in full, without prior written approval of the Company. Any unauthorized alteration, forgery or falsification of the content or appearance of this document is unlawful and offenders may be prosecuted to the fullest extent of the law. Unless otherwise stated the results shown in this test report refer only to the sample(s) tested and such sample(s) are retained for 30 days only.



SGS-CSTC Standards Technical Services Co., Ltd.
Shenzhen Branch

Report No.: SZEM180400354502

Page: 2 of 17

Revision Record				
Version	Chapter	Date	Modifier	Remark
01		2018-06-01		Original

Authorized for issue by:				
				
		Leo Lai /Project Engineer		
				
		Eric Fu /Reviewer		



SGS-CSTC Standards Technical Services Co., Ltd. Shenzhen Branch

Report No.: SZEM180400354502
Page: 3 of 17

2 Contents

	Page
1 COVER PAGE	1
2 CONTENTS	3
3 GENERAL INFORMATION	4
3.1 DETAILS OF E.U.T.	4
3.2 DESCRIPTION OF SUPPORT UNITS	4
3.3 TEST LOCATION	5
3.4 TEST FACILITY	5
3.5 DEVIATION FROM STANDARDS	5
3.6 ABNORMALITIES FROM STANDARD CONDITIONS	5
4 EQUIPMENTS USED DURING TEST	6
5 TEST RESULTS	7
5.1 RF EXPOSURE TEST	7
5.1.1 E.U.T. Operation	7
5.1.2 Measurement Data	8
6 PHOTOGRAPHS	14
6.1 TEST WITH MOBILE PHONE WITH 5, 7, 9, 11, 13, 15CM MEASUREMENT DISTANCE	14



3 General Information

3.1 Details of E.U.T.

Rated input: Input: 5V/2A, 9V/1.67A
Baseline Power Profile: 5W
Operation frequency: 110-148kHz
Antenna Type: Loop Antenna
Modulation type: Load modulation

3.2 Description of Support Units

Description	Manufacturer	Model No.	Serial No.
Adapter	Huawei	HW-059200CHQ	N/A
Dummy load	E-Charging	N/A	N/A
Mobile phone	Samsung	G950F	N/A



3.3 Test Location

All tests were performed at:

SGS-CSTC Standards Technical Services Co., Ltd., Shenzhen Branch

No. 1 Workshop, M-10, Middle Section, Science & Technology Park, Shenzhen, Guangdong, China.
518057.

Tel: +86 755 2601 2053 Fax: +86 755 2671 0594

No tests were sub-contracted.

3.4 Test Facility

The test facility is recognized, certified, or accredited by the following organizations:

- **CNAS (No. CNAS L2929)**

CNAS has accredited SGS-CSTC Standards Technical Services Co., Ltd. Shenzhen Branch EMC Lab to ISO/IEC 17025:2005 General Requirements for the Competence of Testing and Calibration Laboratories (CNAS-CL01 Accreditation Criteria for the Competence of Testing and Calibration Laboratories) for the competence in the field of testing.

- **A2LA (Certificate No. 3816.01)**

SGS-CSTC Standards Technical Services Co., Ltd., Shenzhen EMC Laboratory is accredited by the American Association for Laboratory Accreditation(A2LA). Certificate No. 3816.01.

- **VCCI**

The 3m Fully-anechoic chamber for above 1GHz, 10m Semi-anechoic chamber for below 1GHz, Shielded Room for Mains Port Conducted Interference Measurement and Telecommunication Port Conducted Interference Measurement of SGS-CSTC Standards Technical Services Co., Ltd. have been registered in accordance with the Regulations for Voluntary Control Measures with Registration No.: G-20026, R-14188, C-12383 and T-11153 respectively.

- **FCC –Designation Number: CN1178**

SGS-CSTC Standards Technical Services Co., Ltd., Shenzhen EMC Laboratory has been recognized as an accredited testing laboratory.

Designation Number: CN1178. Test Firm Registration Number: 406779.

- **Industry Canada (IC)**

Two 3m Semi-anechoic chambers and the 10m Semi-anechoic chamber of SGS-CSTC Standards Technical Services Co., Ltd. Shenzhen Branch EMC Lab have been registered by Certification and Engineering Bureau of Industry Canada for radio equipment testing with Registration No.: 4620C-1, 4620C-2, 4620C-3.

3.5 Deviation from Standards

None.

3.6 Abnormalities from Standard Conditions

None.



4 Equipments Used during Test

Item	Test Equipment	Manufacturer	Model No.	Inventory No.	Cal. Due date (yyyy-mm-dd)
1	Electric Field Meter	Schaffner	EMC20	EMC068	2019-03-21



5 Test Results

5.1 RF Exposure test

Test Requirement: 47 CFR PART 1, Subpart I, Section 1.1310

Measurement Distance: 5cm, 7cm, 9cm, 11cm, 13cm, 15cm

Limit:

Frequency range (MHz)	Electric field strength (V/m)	Magnetic field strength (A/m)	Power density (mW/cm ²)	Averaging time (minutes)
(A) Limits for Occupational/Controlled Exposures				
0.3-3.0	614	1.63	*(100)	6
3.0-30	1842/f	4.89/f	*(900/f ²)	6
30-300	61.4	0.163	1.0	6
300-1500	/	/	f/300	6
1500-100,000	/	/	5	6
(B) Limits for General Population/Uncontrolled Exposure				
0.3-1.34	614	1.63	*(100)	30
1.34-30	824/f	2.19/f	*(180/f ²)	30
30-300	27.5	0.073	0.2	30
300-1500	/	/	f/1500	30
1500-100,000	/	/	1.0	30

F=frequency in MHz
*=Plane-wave equivalent power density
RF exposure compliance will need to be determined with respect to 1.1307(c) and (d) of the FCC rules.
The emissions should be within the limits at 300kHz in Table 1 of 1.1310(use the 300kHz limits for 150kHz:614V/m,1.63A/m).

5.1.1 E.U.T. Operation

Operating Environment:

Temperature: 24.0 °C

Humidity: 52 % RH

Atmospheric Pressure: 1015 mbar

EUT Operation:

This device has been tested with the dummy load with 10%, 50% and 100% of the rating Current and the device has been tested with mobile phone at the battery <20%, 40~60%(intermediate charge) and >80% status.



SGS-CSTC Standards Technical Services Co., Ltd. Shenzhen Branch

Report No.: SZEM180400354502
Page: 8 of 17

5.1.2 Measurement Data

Output Voltage include DC 9V and DC 5V

Both voltages were tested during the testing and found that the data of DC 9V is the worse than the data of DC 5V, and the worst one data was show on the report.

Electric Field Emissions

Operation frequency (kHz)	Test Position	Test Distance(cm)	Probe Measure Result(V/m)			50%Limit(V/m)
			10% Current	50% Current	100% Current	
110	Side 1	5	5.29	9.72	11.19	307
110	Side 2	5	14.90	10.69	9.36	307
110	Side 3	5	11.46	15.22	15.50	307
110	Side 4	5	8.10	13.07	11.60	307
110	Top	5	21.84	22.52	28.01	307
110	Bottom	5	20.21	14.39	15.95	307

Magnetic Field Emissions

Operation frequency (kHz)	Test Position	Test Distance(cm)	Probe Measure Result(A/m)			50%Limit(A/m)
			10% Current	50% Current	100% Current	
110	Side 1	5	0.0686	0.0673	0.0686	0.815
110	Side 2	5	0.0732	0.0698	0.0845	0.815
110	Side 3	5	0.0808	0.0525	0.0793	0.815
110	Side 4	5	0.0737	0.0540	0.0642	0.815
110	Top	5	0.1086	0.1169	0.1113	0.815
110	Bottom	5	0.0814	0.0934	0.0962	0.815

Electric Field Emissions

Operation frequency (kHz)	Test Position	Test Distance(cm)	Probe Measure Result(V/m)			50%Limit(V/m)
			10% Current	50% Current	100% Current	
110	Side 1	7	3.56	5.43	6.31	307
110	Side 2	7	3.20	6.17	5.50	307
110	Side 3	7	6.57	8.80	3.96	307
110	Side 4	7	5.29	2.40	6.23	307
110	Top	7	11.84	12.68	15.66	307
110	Bottom	7	10.90	7.87	9.37	307

Magnetic Field Emissions

Operation frequency (kHz)	Test Position	Test Distance(cm)	Probe Measure Result(A/m)			50%Limit(A/m)
			10% Current	50% Current	100% Current	
110	Side 1	7	0.0446	0.0421	0.0442	0.815
110	Side 2	7	0.0458	0.0439	0.0518	0.815
110	Side 3	7	0.0486	0.0346	0.0501	0.815
110	Side 4	7	0.0456	0.0342	0.0412	0.815
110	Top	7	0.0649	0.0722	0.0672	0.815
110	Bottom	7	0.0528	0.0564	0.0639	0.815



SGS-CSTC Standards Technical Services Co., Ltd. Shenzhen Branch

Report No.: SZEM180400354502

Page: 9 of 17

Electric Field Emissions

Operation frequency (kHz)	Test Position	Test Distance(cm)	Probe Measure Result(V/m)			50%Limit(V/m)
			10% Current	50% Current	100% Current	
110	Side 1	9	2.85	3.31	3.42	307
110	Side 2	9	2.40	4.28	3.44	307
110	Side 3	9	4.27	5.47	2.32	307
110	Side 4	9	3.64	1.81	3.50	307
110	Top	9	6.40	6.83	8.47	307
110	Bottom	9	6.11	4.24	5.96	307

Magnetic Field Emissions

Operation frequency (kHz)	Test Position	Test Distance(cm)	Probe Measure Result(A/m)			50%Limit(A/m)
			10% Current	50% Current	100% Current	
110	Side 1	9	0.0298	0.0252	0.0287	0.815
110	Side 2	9	0.0275	0.0294	0.0313	0.815
110	Side 3	9	0.0324	0.0226	0.0330	0.815
110	Side 4	9	0.0272	0.0208	0.0269	0.815
110	Top	9	0.0392	0.0438	0.0433	0.815
110	Bottom	9	0.0326	0.0339	0.0402	0.815

Electric Field Emissions

Operation frequency (kHz)	Test Position	Test Distance(cm)	Probe Measure Result(V/m)			50%Limit(V/m)
			10% Current	50% Current	100% Current	
110	Side 1	11	1.76	2.03	2.35	307
110	Side 2	11	1.95	3.00	2.79	307
110	Side 3	11	2.68	2.96	1.95	307
110	Side 4	11	2.45	1.79	2.06	307
110	Top	11	3.93	4.07	4.49	307
110	Bottom	11	3.67	2.90	3.18	307

Magnetic Field Emissions

Operation frequency (kHz)	Test Position	Test Distance(cm)	Probe Measure Result(A/m)			50%Limit(A/m)
			10% Current	50% Current	100% Current	
110	Side 1	11	0.0177	0.0150	0.0188	0.815
110	Side 2	11	0.0166	0.0181	0.0205	0.815
110	Side 3	11	0.0203	0.0143	0.0196	0.815
110	Side 4	11	0.0179	0.0133	0.0180	0.815
110	Top	11	0.0235	0.0272	0.0271	0.815
110	Bottom	11	0.0200	0.0208	0.0240	0.815



SGS-CSTC Standards Technical Services Co., Ltd.
Shenzhen Branch

Report No.: SZEM180400354502

Page: 10 of 17

Electric Field Emissions

Operation frequency (kHz)	Test Position	Test Distance(cm)	Probe Measure Result(V/m)			50%Limit(V/m)
			10% Current	50% Current	100% Current	
110	Side 1	13	1.93	2.00	1.93	307
110	Side 2	13	1.82	1.78	1.82	307
110	Side 3	13	2.03	1.96	2.03	307
110	Side 4	13	1.82	1.86	1.82	307
110	Top	13	2.43	2.50	2.53	307
110	Bottom	13	2.28	2.28	2.28	307

Magnetic Field Emissions

Operation frequency (kHz)	Test Position	Test Distance(cm)	Probe Measure Result(A/m)			50%Limit(A/m)
			10% Current	50% Current	100% Current	
110	Side 1	13	0.0079	0.0068	0.0084	0.815
110	Side 2	13	0.0079	0.0084	0.0094	0.815
110	Side 3	13	0.0089	0.0068	0.0089	0.815
110	Side 4	13	0.0079	0.0063	0.0084	0.815
110	Top	13	0.0110	0.0121	0.0126	0.815
110	Bottom	13	0.0089	0.0094	0.0110	0.815

Electric Field Emissions

Operation frequency (kHz)	Test Position	Test Distance(cm)	Probe Measure Result(V/m)			50%Limit(V/m)
			10% Current	50% Current	100% Current	
110	Side 1	15	1.02	1.06	1.02	307
110	Side 2	15	0.96	0.94	0.96	307
110	Side 3	15	1.08	1.04	1.08	307
110	Side 4	15	0.96	0.98	0.96	307
110	Top	15	1.28	1.32	1.34	307
110	Bottom	15	1.21	1.21	1.21	307

Magnetic Field Emissions

Operation frequency (kHz)	Test Position	Test Distance(cm)	Probe Measure Result(A/m)			50%Limit(A/m)
			10% Current	50% Current	100% Current	
110	Side 1	15	0.0034	0.0030	0.0037	0.815
110	Side 2	15	0.0034	0.0037	0.0041	0.815
110	Side 3	15	0.0039	0.0030	0.0039	0.815
110	Side 4	15	0.0034	0.0027	0.0037	0.815
110	Top	15	0.0048	0.0053	0.0055	0.815
110	Bottom	15	0.0039	0.0041	0.0048	0.815



SGS-CSTC Standards Technical Services Co., Ltd. Shenzhen Branch

Report No.: SZEM180400354502
Page: 11 of 17

Tested with mobile phone at the battery <20%, 40~60%(intermediate charge) and >80% status.

Electric Field Emissions

Operation frequency (kHz)	Test Position	Test Distance(cm)	Probe Measure Result(V/m)			50%Limit(V/m)
			<20% of battery	intermediate charge	>80% of battery	
110	Side 1	5	20.74	23.68	20.02	307
110	Side 2	5	9.42	18.13	13.83	307
110	Side 3	5	11.37	13.81	16.21	307
110	Side 4	5	12.24	17.66	9.79	307
110	Top	5	13.63	20.04	29.46	307
110	Bottom	5	17.87	16.88	13.44	307

Magnetic Field Emissions

Operation frequency (kHz)	Test Position	Test Distance(cm)	Probe Measure Result(A/m)			50%Limit(A/m)
			<20% of battery	intermediate charge	>80% of battery	
110	Side 1	5	0.1018	0.1024	0.0771	0.815
110	Side 2	5	0.0752	0.0836	0.0623	0.815
110	Side 3	5	0.0680	0.0643	0.0772	0.815
110	Side 4	5	0.0616	0.0723	0.0551	0.815
110	Top	5	0.1334	0.1313	0.1181	0.815
110	Bottom	5	0.0872	0.1174	0.1112	0.815

Electric Field Emissions

Operation frequency (kHz)	Test Position	Test Distance(cm)	Probe Measure Result(V/m)			50%Limit(V/m)
			<20% of battery	intermediate charge	>80% of battery	
110	Side 1	7	11.42	13.53	11.49	307
110	Side 2	7	5.54	9.68	8.57	307
110	Side 3	7	7.42	7.44	9.34	307
110	Side 4	7	7.07	9.52	6.23	307
110	Top	7	7.26	11.31	14.16	307
110	Bottom	7	9.62	9.65	7.16	307

Magnetic Field Emissions

Operation frequency (kHz)	Test Position	Test Distance(cm)	Probe Measure Result(A/m)			50%Limit(A/m)
			<20% of battery	intermediate charge	>80% of battery	
110	Side 1	7	0.0667	0.0668	0.0483	0.815
110	Side 2	7	0.0492	0.0530	0.0383	0.815
110	Side 3	7	0.0416	0.0426	0.0495	0.815
110	Side 4	7	0.0385	0.0459	0.0370	0.815
110	Top	7	0.0803	0.0789	0.0709	0.815
110	Bottom	7	0.0520	0.0768	0.0694	0.815



SGS-CSTC Standards Technical Services Co., Ltd. Shenzhen Branch

Report No.: SZEM180400354502

Page: 12 of 17

Electric Field Emissions

Operation frequency (kHz)	Test Position	Test Distance(cm)	Probe Measure Result(V/m)			50%Limit(V/m)
			<20% of battery	intermediate charge	>80% of battery	
110	Side 1	9	6.35	7.53	7.10	307
110	Side 2	9	2.97	6.16	2.11	307
110	Side 3	9	1.08	4.66	5.53	307
110	Side 4	9	4.47	5.82	4.02	307
110	Top	9	4.02	6.20	7.58	307
110	Bottom	9	5.37	5.13	4.84	307

Magnetic Field Emissions

Operation frequency (kHz)	Test Position	Test Distance(cm)	Probe Measure Result(A/m)			50%Limit(A/m)
			<20% of battery	intermediate charge	>80% of battery	
110	Side 1	9	0.0426	0.0406	0.0313	0.815
110	Side 2	9	0.0319	0.0314	0.0228	0.815
110	Side 3	9	0.0269	0.0254	0.0329	0.815
110	Side 4	9	0.0246	0.0282	0.0227	0.815
110	Top	9	0.0498	0.0526	0.0432	0.815
110	Bottom	9	0.0349	0.0457	0.0416	0.815

Electric Field Emissions

Operation frequency (kHz)	Test Position	Test Distance(cm)	Probe Measure Result(V/m)			50%Limit(V/m)
			<20% of battery	intermediate charge	>80% of battery	
110	Side 1	11	3.59	4.39	4.05	307
110	Side 2	11	1.87	3.45	1.50	307
110	Side 3	11	1.45	2.90	3.50	307
110	Side 4	11	2.71	3.62	2.19	307
110	Top	11	2.14	3.86	4.19	307
110	Bottom	11	2.91	3.75	2.67	307

Magnetic Field Emissions

Operation frequency (kHz)	Test Position	Test Distance(cm)	Probe Measure Result(A/m)			50%Limit(A/m)
			<20% of battery	intermediate charge	>80% of battery	
110	Side 1	11	0.0256	0.0249	0.0198	0.815
110	Side 2	11	0.0213	0.0205	0.0144	0.815
110	Side 3	11	0.0179	0.0161	0.0206	0.815
110	Side 4	11	0.0155	0.0177	0.0144	0.815
110	Top	11	0.0319	0.0350	0.0289	0.815
110	Bottom	11	0.0215	0.0298	0.0264	0.815



SGS-CSTC Standards Technical Services Co., Ltd. Shenzhen Branch

Report No.: SZEM180400354502
Page: 13 of 17

Electric Field Emissions

Operation frequency (kHz)	Test Position	Test Distance(cm)	Probe Measure Result(V/m)			50%Limit(V/m)
			<20% of battery	intermediate charge	>80% of battery	
110	Side 1	13	2.64	2.68	2.39	307
110	Side 2	13	1.93	1.89	1.64	307
110	Side 3	13	1.82	2.00	1.86	307
110	Side 4	13	2.03	2.11	1.89	307
110	Top	13	2.18	2.89	2.46	307
110	Bottom	13	1.93	2.57	2.32	307

Magnetic Field Emissions

Operation frequency (kHz)	Test Position	Test Distance(cm)	Probe Measure Result(A/m)			50%Limit(A/m)
			<20% of battery	intermediate charge	>80% of battery	
110	Side 1	13	0.0121	0.0115	0.0089	0.815
110	Side 2	13	0.0094	0.0094	0.0063	0.815
110	Side 3	13	0.0084	0.0073	0.0094	0.815
110	Side 4	13	0.0073	0.0079	0.0068	0.815
110	Top	13	0.0141	0.0157	0.0136	0.815
110	Bottom	13	0.0094	0.0131	0.0126	0.815

Electric Field Emissions

Operation frequency (kHz)	Test Position	Test Distance(cm)	Probe Measure Result(V/m)			50%Limit(V/m)
			<20% of battery	intermediate charge	>80% of battery	
110	Side 1	15	1.40	1.42	1.27	307
110	Side 2	15	1.02	1.00	0.87	307
110	Side 3	15	0.96	1.06	0.98	307
110	Side 4	15	1.08	1.11	1.00	307
110	Top	15	1.15	1.53	1.30	307
110	Bottom	15	1.02	1.36	1.23	307

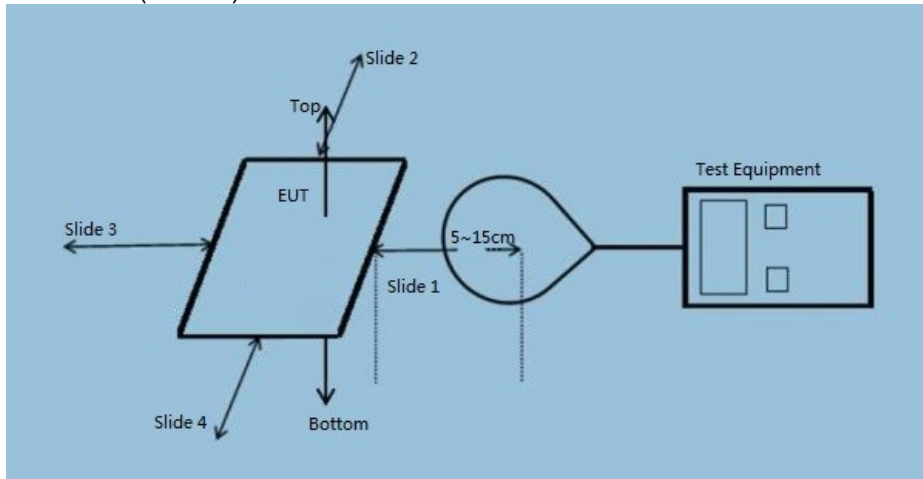
Magnetic Field Emissions

Operation frequency (kHz)	Test Position	Test Distance(cm)	Probe Measure Result(A/m)			50%Limit(A/m)
			<20% of battery	intermediate charge	>80% of battery	
110	Side 1	15	0.0053	0.0050	0.0039	0.815
110	Side 2	15	0.0041	0.0041	0.0027	0.815
110	Side 3	15	0.0037	0.0032	0.0041	0.815
110	Side 4	15	0.0032	0.0034	0.0030	0.815
110	Top	15	0.0062	0.0069	0.0060	0.815
110	Bottom	15	0.0041	0.0057	0.0055	0.815

6 Photographs

6.1 Test with mobile phone with 5, 7, 9, 11, 13, 15cm measurement distance

Test Block (6 sides)



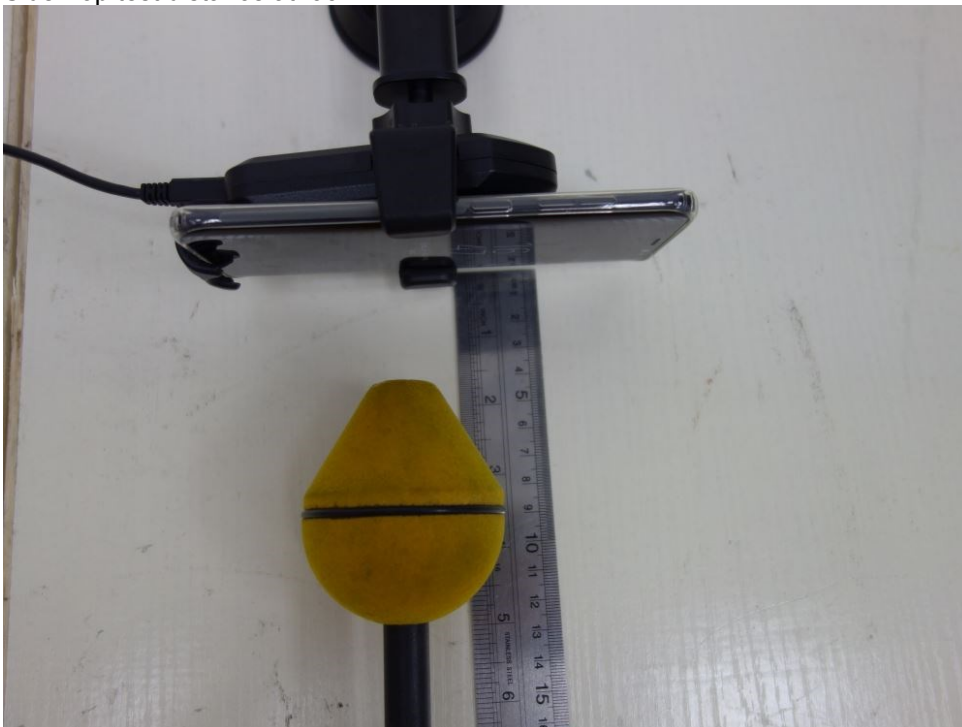
Side Top test distance at 5cm



Side Top test distance at 7cm



Side Top test distance at 9cm



Side Top test distance at 11cm



Side Top test distance at 13cm





SGS-CSTC Standards Technical Services Co., Ltd.
Shenzhen Branch

Report No.: SZEM180400354502
Page: 17 of 17

Side Top test distance at 15cm



- End of the Report -