



## UM565-3GV Instruction Manual



# Table of Contents

Camera button control diagram: .....	4
Understanding main screen info:.....	5
Installing the batteries: .....	6
Installing the SIM card.....	8
Setup on camera.....	14
Setup on a computer (Download Tool).....	17
Send a test photo: .....	24
Customizing the camera settings:.....	25
Setting the camera mode: .....	25
Camera mode settings: .....	26
Video mode settings .....	27
PIR tab: .....	29
NET tab:.....	34
SYS tab:.....	36
Formatting the SD card: .....	40
Viewing photos on the color display:.....	41
Troubleshooting:.....	43
Tricks and tips on field setup: .....	46
Covert Scouting Cameras Warranty:.....	47
Covert International Warranty Policy: .....	49
Code Black Set Up on a MAC: .....	56
Network Carrier Suffix List.....	59
Technical Specifications:.....	68

Congratulations on your purchase of the 2015 UM565-3GV Scouting Camera! We truly value your business and will continue to provide you top quality customer service should you ever need help with any of our products.

We hope you enjoy hassle free performance from this quality product for years to come.

# Camera Button Control Diagram:



Figure 1

## Understanding main screen info:

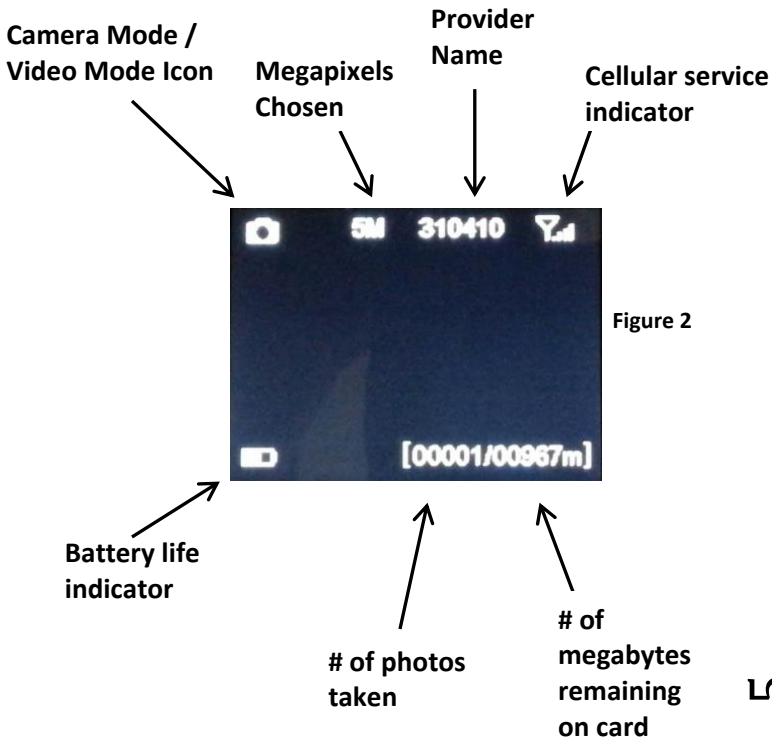


Figure 2

## Installing the batteries:

Your Code Black can function short term on 4-AA batteries. Improved battery life on 8-AA, but we suggest you use 12-AA batteries to get the most out of your cameras battery life. Using Covert rechargeable NiMH, 2300mAh, AA batteries will extend the battery life significantly.

DISCLAIMER: Do not use external power source (Example: Solar Panel) with **non-rechargeable** AA battery installed in camera. The Covert AA NiMH battery when used in conjunction with the solar panel extends the time in the field.

Install batteries by sliding the top battery into the sleeve, then depressing the spring with the other battery and snapping down in place. Pay attention to the (+) or (-) molded into each sleeve to determine if you insert the positive or negative end into the sleeve first. Negative battery terminal

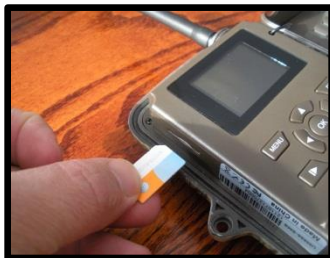
always contacts the spring. (Fig. 3)



**Figure 3**

## Installing your SIM card:

Using the SIM card provided in the packaging, open your camera housing to expose the control panel. Make sure your camera mode selector switch is in the OFF position. On the left side of the camera control panel towards the top is a small card slot. See Figures 4 & 5.



**Figure 4**



**Figure 5**

Press the card in securely, until it clicks in place.

To remove the SIM card, simply press in on the card until it clicks and then release it.



## Installing the SD card:

Now that you have your SIM card and it has been installed in the camera, you will need to install an SD card in the bottom of the camera, (Covert SD card recommended). See Figure 7 for card orientation. The card installs the same way as the SIM card did. Push in until it clicks and release. To remove, repeat that process, the card will pop out enough to remove. You can use any SD card size up to 32GB. You must have the SD card in the camera to be able to turn the camera on and set it up. The camera will only send the first picture of the 1,2,3 shot burst.



Figure 7

**NOTE: Every photo taken with this camera will be saved to the SD card even if it is sending the photos wireless. You will have access to the high resolution images on the SD card.**

## Setting up the wireless network:

- 1) Slide selector switch to the right to the **SETUP** position. Press the **MENU** button. You will see the screen shown below (Figure 8):

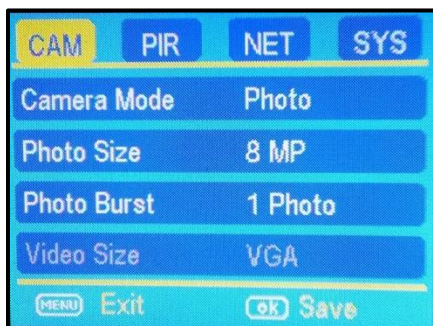


Figure 8

- 2) Press the ► button 2 times to highlight the NET tab in yellow. Press the ▼ button to highlight the **Send Mode** option. Press the ► button to toggle the option in the white box to **INSTANT**. Press OK to save this setting. You will then be asked a max number. 0-99. To receive an

unlimited amount of pictures, enter **0 (zero)**.

This is the number of pictures the camera can send you in a 24-hour period. Press the menu button. This will take you back to the home screen.

You will need to be patient as the camera does its initial set-up and looks for cellular service. While finding the network you will see the word **checking**, Then **Search Network** in red on the screen. Once you see AT&T at the top right corner, you are ready to move on. **Network Mode:** You have the option to select AUTO, 3G or 2G. We suggest the AUTO tab so the camera can bounce off all towers in your area. **Note: Anytime you switch Network Modes, you must allow your camera time to search for signal again.**

## Setup on Camera:

- 1) Press the Menu button
- 2) Press the ► button repeatedly until the **NET** tab is highlighted in yellow.
- 3) Press the ▼ arrow (3) times to highlight the **Edit Phone** and press **OK**.
- 4) Press the ▲ or ▼ buttons to add the first phone number in the camera. Press **OK** to save. Then select your personal cell phone provider. (Figure 11) If you do not have **SPRINT, AT&T, US CELLULAR, T-MOBILE, or VERIZON** as your personal cell phone provider, **skip to page 17**.
- 5) Under the Carrier Option, select the carrier of your personal cell phone, or the carrier of the phone in which you are sending your pictures.
- 6) Enter the ten digit phone number you are sending the pictures to starting with the area code first.

Phone 1st

Carrier :                      AT&T

\*Select your personal carrier of the phone number you are sending the pictures to.\*

2 7 0 5 5 **5** 5 5 5 5 x x x x x x

\*Be sure you put your phone number with the area code first.  
Be sure you select your correct carrier of your cell phone.\*

---

**MENU**   Exit                      **ok**   Save

Figure 9

\*Note: Make sure you do not enter a 1 before the area code & phone number.

## OPTIONAL Adding Multiple Numbers:

- 7) Press the ► button to add the Second Phone number. Press **OK** to save. Then select the personal cell phone provider of phone two.
- 8) Press the ► button to add the Third Phone number. Press **OK** to save. Then select the personal cell phone provider of phone three.
- 9) Press the ► button to add the Fourth Phone number. Press **OK** to save. Then select the personal cell phone provider.

**\*Note:** You only need a minimum of one phone number. The additional options are for your convenience to send to multiple phones, however it is recommended to use a 30 second delay for each email/phone number. This is the camera recovery period. \*

- 10) To enter emails into your camera, you must use a computer (refer to the next page.)

## Setup with a Computer (Download Tool):

If your personal cellular provider is not one of the following: **SPRINT, AT&T, US CELLULAR, T-MOBILE,** or **VERIZON**, please follow the steps below.

Next Press the ◀ or ▶ button repeatedly until the **NET** tab is highlighted in yellow.

- 1) Press the ▼ arrow to highlight the **DOWNLOAD TOOL** and press **OK**. (Figures 10 & 11).

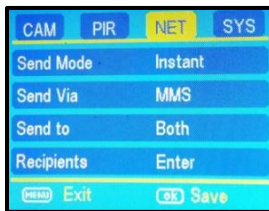
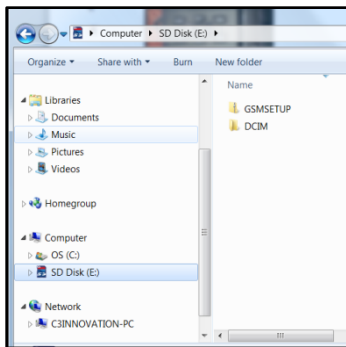


Figure 10



Figure 11

- 2) Turn the camera off by sliding the selector switch to the **OFF** position
- 3) Remove the SD card from your camera and insert into your personal PC card reader.
- 4) Locate the SD card under MY COMPUTER and double click on it to show its contents. (Figure 12).



**Figure 12**

- 5) Double click on the **GSMSETUP** and then double click on the UOV Setup application.



- 6) You will see a warning box like Figure 13 below. Choose **YES** and the UOV set-up program will launch.

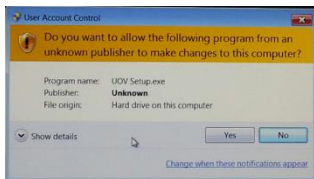
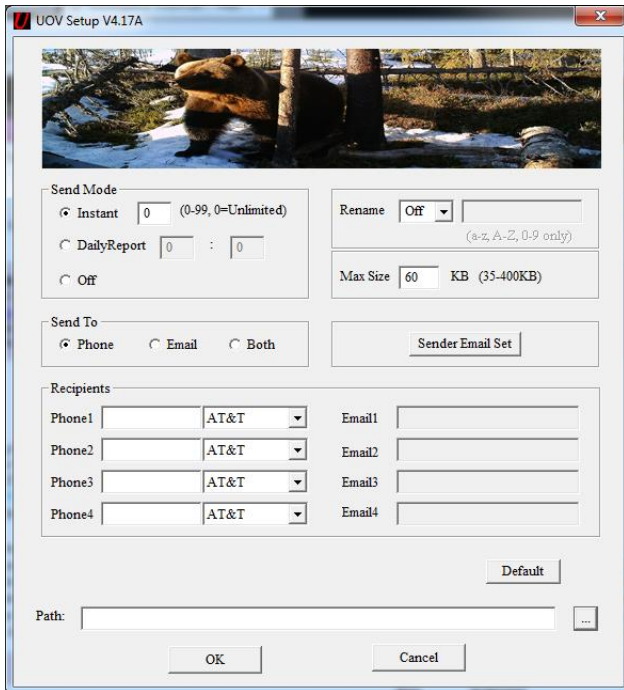


Figure 13

- 7) You will see the following screen for setting up the NET options for your camera. This is where you add phone numbers and e-mail addresses and control the number of wireless photos sent from the camera each day. (Figure 14).



**Figure 14**

\*Make sure to save your path by clicking the 3-dot button to the right of the screen. Selecting your SD card tells the camera where to save the pictures. (This is usually "Removable Disk F" or "Removable Disk H").

**Helpful Tip:** When entering phone number, make sure you do not enter any spaces or dashes.

**11.) Send Mode:**

- a. **INSTANT:** If you want the camera to send you photos the instant it's taken, you want to choose this option.
- b. **Max Num:** You can control the number of photos that are sent to your device or e-mail every day. If you want to limit this, put the maximum number of photos you want the camera to send each day in the box. If you want it to send **unlimited photos**, set this value to **0 (zero)**. This sends a picture every time the device is triggered.
- c. **Daily Report:** This option only sends you the last photo taken each day with a report of all the other activity during the day. Choose the time that you want each picture sent.
- d. **OFF:** choose this option if you do not want the camera to send out the photos taken.

This will make the camera perform like a traditional trail camera.

8) **Rename:** Customize the name of your camera.

9) **Send to:**

- a. **Phone:** To have the camera send pictures to your phone, enter up to 4 different phone numbers in the phone number field. You will need to enter the area code only with no spaces or dashes. Enter the phone number that corresponds with the suffix of your personal carrier.

**For Full List:**

**(SEE PERSONAL CARRIER SUFFIX LIST-PAGE 57)**

C-Spire Example:

For Example, if your personal carrier is with C Spire Wireless, then in order to receive text messages to your phone, you will click send to e-mail and then enter your personal ten digit phone number @cspire.com. Do not use a 1 before the phone number.

Ex: number@cspire1.com

Ex: 2705555555@cspire1.com

- b. Email:** Choose this option if you only want the photos sent to chosen e-mail addresses. You may enter up to 4 different e-mail addresses in the Email field.

C Spire Customer Example:

[number@cspire1.com](mailto:number@cspire1.com) will send the messages as a text message. If you want the pictures to be sent to your standard email address, then enter your personal email address. For full list of carrier suffix's that aren't programmed into the camera, (SEE PERSONAL CARRIER SUFFIX LIST-PAGE 57)

- c. Both:** Choose this option if you want to send the photos to your phone and email. You may enter up to four different phone numbers and email addresses.
- Covert recommends a 30 second trigger interval for each phone number or email that is entered in the setup to allow the camera to perform correctly.***

- 10) **Sender Email Set:** This is the settings for customers who are using the cameras in a country other than the US.
- 11) **Max Size:** This should be set to 60KB, which should default on the setup.
- 12) **Path:** The path is the location in which the settings are saved. **You will want to set your path to save in the removable disk.** To do this you will pick the button with the 3 dots on it to the right of the path text bar. This will allow you to choose the SD card from your windows explorer. You must save this information to the SD card for the set up to take place once you put the SD card back into the camera. (Figure 15).

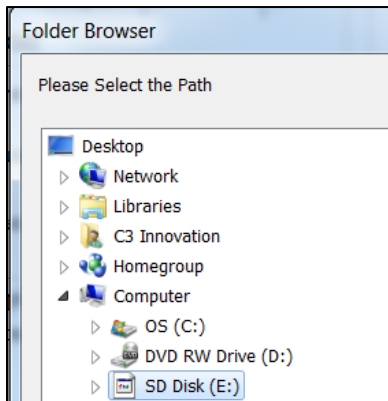
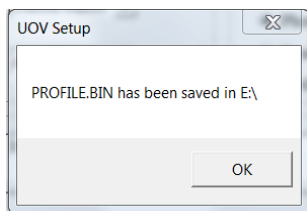


Figure 15

- 13) Press the **OK** button to accept the settings and save them to the SD card. You will see the following box pop up (Figure 16). Click **OK** and this will cancel the UOV Setup.



**Figure 16**

- 14) Remove the SD card from your computer and replace it in the camera.
- 15) Slide the **SELECTOR** switch to the **SETUP** position, and wait 15-20 seconds to show **update success**. Wait for the camera to go through its set up process and find cellular service. Press the **MENU** button.
- 16) Press the button that has the **CAMERA** symbol on it (1) time to manually take a photo with the camera. You will know that a photo has been

taken because the photo counter on the screen will say **001**.

## Send a test photo:

- 17) Press the **PLAY** button, located under **MENU**, to enter the Play mode and then press the **MENU** button. You will see the following screen. (Figure 17).

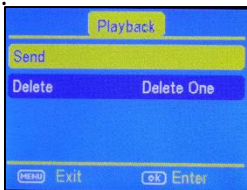


Figure 17

- 18) Press the ▼ to highlight the **SEND** option and press **OK**. (Figure 18)

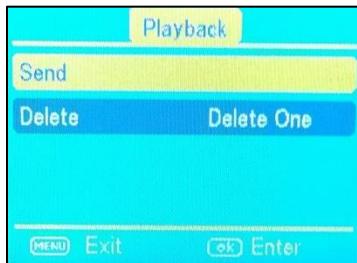


Figure 18



19) The LCD screen will start to count up from step 1 to 10 with brief pauses between numbers. Once you see Send Successful, you have successfully sent your first photo and your camera is ready to take photos. Press **PLAY** to return to the main menu.

\*Note: Photos sent manually will not have the rename or battery meter on the picture.\*

## Customizing the camera settings:

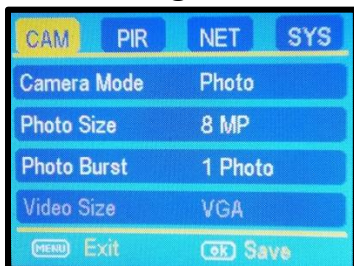


Figure 19

## Setting the camera mode:

Press the ▼ button to highlight the Camera Mode option in yellow. Either **Photo** or **Video** will show up in a white box to the right. Press the ► button

to toggle between **Photo** or **Video** until the option you want shows in the white box. Press **OK**.

**NOTE:** If you do not press **OK**, your setting will return back to the previous setting.

## **Camera mode settings:**

**PHOTO SIZE:** Press the ▼ or ▲ button to highlight Photo Size in yellow.

Press the ► arrow repeatedly to toggle between 3mp, 5mp, 8mp, or 12mp. Press **OK** once the desired option shows in the white box. **Keep in mind the higher the MP, the larger the file and the faster your SD card can fill up.**

**PHOTO BURST:** Your camera can take a 1, 2 or 3 shot burst every time the PIR is triggered to take a photo. The camera will only send the first photo of the photo burst to your phone or e-mail.

Press the ▲ or ▼ buttons to highlight the **PHOTO BURST** option: To set this function, press the ► repeatedly to show the 1 Photo, 2 Photo, or 3 Photo option. Press **OK** to save the desired setting.

## Video mode settings: (Figure 20).

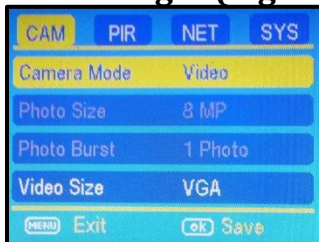


Figure 20

**VIDEO SIZE:** You can choose from VGA or QVGA video options.

**NOTE:** The camera will NOT send videos to your phone or e-mail. It will only alert you that a video has been taken. Recommend low flash when set to video.

Press the ► button to toggle between the VGA and QVGA options. Press **OK** to save the setting.

**VIDEO LENGTH:** You can adjust the length of time the camera takes a video from 5-60 seconds. Press the ▲ or ▼ button to highlight the **VIDEO LENGTH** option. Press the ◀ or ▶ buttons repeatedly to change the number of seconds shown in the white box. **Long videos fill the SD card up quickly.**

**NOTE:** You need to double the time interval from what your video is set on. Example: 20 second video length, your trigger interval needs to be at LEAST 40 seconds.

## PIR TAB:

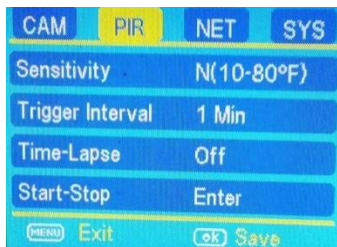


Figure 21

**SENSITIVITY:** There may be situations where you might feel the camera is not catching animals that are nearby or maybe the camera is triggering too easily. You can adjust the sensitivity of your camera to help with this. Under most conditions, the **NORMAL** option will work the best. Normal option is for weather between 10°F-80°F. In high temperatures, temperatures that are higher than 80°F, the **HIGH** setting might help differentiate between the outside temps and the body temps of the animal. In cold conditions, temperatures that are lower than 10°F, you may find that the **LOW**

option is best as the camera can easily differentiate the outside temps from the body temps of the subject. If you are using the time lapse function, you would choose **OFF** to turn off the PIR.

Press the ▼ button to highlight the **Sensitivity** option. Press the ► button repeatedly to toggle between the options in the white box. Once the desired option is chosen, press the **OK** button to save the setting.

**TRIGGER INTERVAL:** Allows you to customize how often the camera can be allowed to take a photo. Press the ▲ or ▼ arrow to highlight the **Trigger Interval option**. Repeatedly press the ◀ or ▶ to adjust the timing. Options are 5-60 seconds (5 second increments) and 1-60 minutes. Once you have chosen your desired trigger interval, press the **OK** button to save the setting.

**NOTE:** You need to have a 30 second trigger interval. Your trigger interval needs to double for every phone number and/or email address that you

enter in your NET setup. Example: If you enter three phone numbers/email address then you need to have a three minute trigger interval.

**TIP:** You can press and hold the ◀ or ▶ button to speed through the settings rather than repeatedly pressing the button.

**TIME LAPSE:** Press the ▼ and ▲ arrow to highlight the **Time-Lapse** option. This option allows your camera to automatically take a photo without being triggered by the PIR. If you already set the **Sensitivity** to **OFF**, then the camera will only take photos when the **Time-Lapse** option is on. If you have the PIR set to **LOW**, **NORMAL**, or **HIGH**, the camera will also take photos when the PIR is triggered. To turn the **Time-Lapse** option on, use the ◀ and ▶ buttons to choose a time option. 5-60 seconds (in 5 second increments) and 2-60 minutes. Once you have chosen the time option you want, press **OK** to save the setting. The camera

will continuously take photos in timed increments you set. Remember, this will generate a lot of photos and you may want to limit the number of photos sent via MMS daily.

**START-STOP:** If you only want your camera to be on during part of the day each day you can set the Start-Stop function. The Code Black has a dual start-stop option. Press the ▲ and ▼ buttons to highlight the Start-Stop option. The default setting is **OFF**. Press the ► button to toggle the setting to **ON** and press **OK**. See Fig 22 & 23 below.

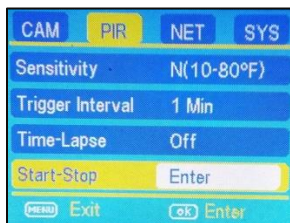


Figure 22

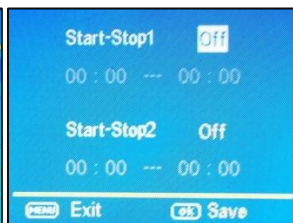


Figure 23



Once you press **OK** you will see the screen in Fig. 24. Use the ▲ and ▼ buttons to set the time in hours (military time) and press the ► button to change to minutes and use the ▲ and ▼ to set the minutes.

Press the ► button to navigate to the Stop settings and repeat the process from above to set the Stop time. You can press the ◀ and ► buttons to navigate back through the settings if necessary. Once you have the start-stop times set, press **OK** to save the settings.

## NET tab:

Press the ▲ and ▼ buttons until just the **PIR** tab is highlighted and then use the ► to highlight the **NET** option.

Most of the settings under the NET tab are controlled in the original camera set up. You will not be able to make changes to these settings from the camera. You would have to repeat the steps for setting up the wireless network to make changes to these settings.

**Note:** In order to make changes to your setup, you will have to insert your card back into your computer.

**INSTANT MODE:** If you want the camera to send you a set amount of pictures then you want the camera settings to be turned on INSTANT MODE.

**DAILY REPORT:** The daily report function will only send you the last picture of every day along with how many pictures were taken that day.

## SYS tab:

The SYS tab controls all the internal system information such as Setting the clock, Time stamp, Flash range, Password, Over Write, and Format. (Figure 24)



Figure 24

**SETTING THE CLOCK:** Scroll over to the SYS tab using the ◀ and ▶ buttons and then press the ▼ button to highlight the **Set Clock** option. Press **OK**. You will see the following screen. (Figure 25)

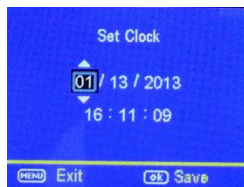


Figure 25

Press the ▲ and ▼ button to set the MONTH, the press the ► button to navigate to the DATE and use the ▼ and ▲ buttons to set the date. Press the ► button to navigate to the year and set that using the ▲ and ▼ buttons.

Navigate down to the time using the ► button and follow the same process as above to set the time. Once you have the time set, press **OK** to save the settings.

**TIME STAMP:** Press the ▼ button to highlight the **Time Stamp** option. The default setting for the **Time Stamp** option is **ON**. This puts the Time, Date, Temp and moon phase at the bottom of the camera. If you do not want the Time Stamp **ON**, use the ► button to toggle to the **OFF** position. Press **OK** to save the settings.

**FLASH RANGE:** You can set the Flash Range depending on your set up. If most of the subjects are going to be inside 20', use the LOW setting. If you need extended night vision, choose the HIGH

option. Press the ▼ button to highlight the **Flash Range** option. Use the ► button to navigate between the two different settings. Press OK to save the settings.

**PASSWORD:** Press the ▼ button to highlight the **Password** option. You can password protect your camera with this setting. The default setting is **OFF**. **Make sure you write down your password or store it in your phone so you don't lose it.** If you set this option to **ON**, you will not be able to access your camera without the password. This is a very important security feature. To turn the password ON, press the ► button to toggle to **ON** and press **OK**. You will see the following screen: (Figure 26).

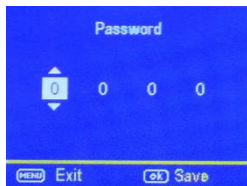


Figure 26

Use the ▲ and ▼ and ► buttons to set the password. Press OK to save the settings.

\*If you forget your password, please contact Covert Scouting Cameras at support@dlcc covert.com or call 877-462-1799 for RA #. We require warranty registration to verify your camera. This must be completed within 10 days after your purchase. Proof of purchase will be required.

**RENAME:** Press the ► button to turn the rename to **ON**. Press **OK**. Enter your customized name for the camera. (0-9, A-Z Only).

**OVER WRITE:** The **Over Write** function will save new photos over the old photos on your SD card if it becomes full. Each time a new photo is taken the oldest photo on the card will be overwritten, however the camera may not continue to send pictures once the SD card is full.

The default for this option is **OFF**. If you want to change this, Press the ▼ button to highlight the **Over Write** option and then press the ► button to toggle the setting to **ON**. Press **OK** to save the setting.

**FORMAT:** If you get into the field and forgot to clear your SD card before you went out, you can clear the contents of the card using the **Format** option.

If you have a new SD card, you should always format the card before you use it in the camera. To format the SD card, press the ▼ button until the **Format** option is highlighted. Press the OK button. You will see a screen that has YES and NO on it, use the ► button to navigate to **YES** and press **OK**.

## Formatting the SD card:

Turn the camera onto the setup mode. Press the menu button, then ► button 3 times to highlight the SYS tab.

Navigate down by pressing the ▼ button repeatedly until the **FORMAT** option is highlighted and press **OK**. You will see the screen shots shown below (Figure 27 & 28). Press the ◀ button to highlight **YES** and press **OK**. Your SD card is now formatted.

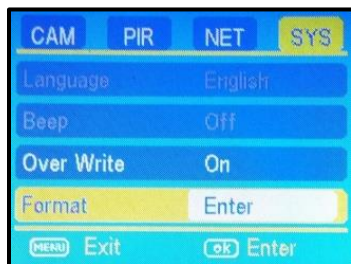


Figure 27

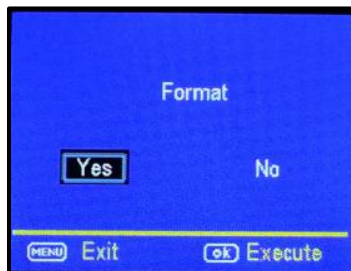


Figure 28

**DEFAULT SET:** The Default Set resets the camera to factory settings. The network information will save in the camera, (EX: Your phone number). If you want to start clean and re-set all the settings to the original factory default settings you will choose this option. Press the ▼ button to highlight the **Default**



**Set** option. Press **OK**. Make sure 100% that you want to re-set all the settings to factory default as you will have to start over with the process in re-doing all the settings.

**FW Version** is for manufacturer's use only.

## Viewing photos on the color display:

You can view your photos on the color display when in the field. If you want to do this, make sure the **Selector switch** is set to **SETUP**. Press the **Play** button. You can use the ◀ and ▶ buttons to toggle through the photos. If you see photos you want to delete, show the image on the screen and press the **DEL** button. This will delete the photo that is showing on the screen. You will see the screen below. Use the ▶ button to navigate to **YES** and press **OK**. If you do not want to delete, press the **DEL** button again and to go back. (Figure 29).

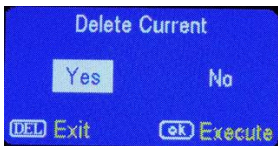


Figure 29

**AUXILIARY POWER:** Your camera comes with an Auxiliary power jack. If you want to hook up an external 6V battery to power the camera, you can. The jack necessary to make the connection is a standard 4mm jack.

**MINI USB:** Your camera comes with a mini USB cable to hook up to your computer or TV to look at the photos. Plug the small jack of the cable into the bottom of the camera. Plug the USB end into the USB port on your home computer or USB capable television. The USB will recognize the new hardware and download the proper driver to view the images or videos. The screen on the camera will say Mass Storage.

Covert offers an auxiliary cable to extend your battery life with an external 6 or 12 volt battery. In order to use 12 volt, you must use the Covert auxiliary battery cable. We also sell a 2014 Covert Solar Panel to directly hook up to your camera for optimal battery usage.

## **Troubleshooting:**

### **COMMON ERROR MESSAGES:**

#### **“LOG IN FAIL”**

#### **“SEND FAIL”**

#### **“NETWORK BUSY”**

#### **Reasons for error:**

##### **Login Fail:**

1. The service in your area is insufficient to run the camera.
2. You need to add money to your AT&T account.

##### **Send Fail:**

1. The parameters are not set correctly in the NET Setup. Parameter error generally means it was not saved to the correct path.
2. The camera does not have sufficient service to send the picture.

3. You need to add money to your AT&T account.

**Network Busy:**

1. The AT&T Network service provider is busy.
2. The camera does not have sufficient service to send the picture.
3. Network busy can also mean there isn't enough money on your account with AT&T.

**Helpful Tip:** Re-do the UOV setup to make sure there are not any mistakes. Check to make sure the numbers and email addresses are entered without any spaces or dashes.

- 1) If it's a cellular service issue you may need to purchase a booster antenna from Covert Scouting Cameras to help boost the signal. These can be very effective in boosting the signal to your camera in a poor signal area.
- 2) If you are still having problems, contact customer service at **877-462-1799** or e-mail [support@dlccovert.com](mailto:support@dlccovert.com) If you e-mail or have

to leave a message, we will get back to you as quickly as we can.

3) An error code like the one below means that you entered spaces and/or dashes in one of your phone numbers. Be sure you have no spaces or dashes.

## **Cannot access the SET-UP menu:**

### **Reasons for issue:**

- 1) SD card not inserted
- 2) SD card is corrupt
- 3) Batteries are low

### **Suggestions to remedy**

- 1) Install new SD card
- 2) Replace batteries

## **Tricks and tips on field setup:**

- For best results, mount the camera approximately 3 feet off the ground facing straight forward, as level as possible.

- To enhance the flash, we recommend positioning the camera in an area with a backdrop to reflect the maximum amount of light. For instance, place the camera 20-30' from a field edge facing the woods. For the inside of timber, positioning the camera facing a thicket approximately 20-30' away.
- Try to set the camera up so it's not facing directly into the sun either in the morning or the evening when game movement is at its peak.
- Use the Covert Tree60 mounting system to mount the camera up higher pointing down on them for a better look. Works great when you don't have a straight tree to attach to.
- Included in this manual is an extra "O" ring/seal for your Covert Code Black. You don't need to do anything with this seal; it is an extra one just-in-case.
- The FW version is reference to our engineers to ensure a speedy and efficient warranty repair should the need arise.

## **Covert Scouting Cameras Warranty:**

Covert Scouting Cameras warrants this product for a period of one (1) year from the date of purchase. This warranty only covers manufacturer's defects and does not cover damage caused by misuse or abuse of the product. This warranty includes one year repair or replacement service on product from date of purchase. If you have problems with this product, please do not contact the store you purchased it from. Contact Covert Scouting Cameras Customer Service toll free at 877-462-1799 or e-mail [support@dlccovert.com](mailto:support@dlccovert.com).

**\*\* Proof of purchase required for replacement\*\***

Covert also offers a second year warranty. Please visit our website at [www.covertscoutingcameras.com](http://www.covertscoutingcameras.com) for more information.

## **Covert Warranty Policy and Procedure:**

To receive repair or replacement by Covert Scouting Cameras one year warranty, we ask you to do the following:

**-All returns must have a Return Authorization (RA#) prior to sending in the camera.**

1. E-mail or call our customer service department.  
-support@dlccovert.com  
-toll free: 877-462-1799  
Please explain to the technician what issues you are having with your camera.
2. If you are asked to return your camera to Covert Scouting Cameras, you will be responsible for the cost of shipping to Covert Scouting Cameras. In return, Covert will provide fast and exceptional service as well as incur the cost of shipping back to you. (Only within the Continental United States.)
3. Please include the following information when sending in your camera.



- RA# on outside of package
  - Return address
  - Telephone and Email address
  - Brief description of the problem
  - Copy of proof of purchase
4. Please make sure all the accessories are removed (i.e. SD Cards, batteries, solar panels SIM cards, straps, ETC.) before shipping. All accessories received by Covert Scouting Cameras will NOT be returned.
  5. This warranty only covers manufacturer's defects and does not cover damaged caused by misuse or abuse of the product.

## **Covert International Warranty Policy and Procedure:**

1. Outside the US, service is the available through the distributor/reseller of purchase.
2. All returns must have an RA# provided by Covert. Copy of Proof of Purchase is required for all returns.

3. Covert is not responsible for lost or damaged products incurred during the shipping process.

4. Insurance for returns is at the discretion of the customer. Additional charges apply for return shipping.

In the maintenance of the product, Covert Scouting Cameras may use new or like-new assemblies or products for equal or improved quality. All defective parts, assemblies, and products become the property of Covert. Returns and claims will be handled according to the current Covert Scouting Cameras, Inc. procedure.

These warranties shall not apply to any defect, failure or damage caused by improper use or inadequate maintenance and care. Covert shall not be obligated under these warranties to repair:

- a. Damage resulting from attempts by personnel other than Covert representatives to install, repair or service

the product unless directed by a Covert representative.

- b. Damage, malfunction or degradation of performance resulting from improper use or connection to incompatible equipment or memory.
- c. Damage, malfunction, or degradation of performance caused by the use of non-Covert supplies or consumables or the use of Covert supplies not specified for use with this product.
- d. An item that has been modified or integrated with other products when the effect of such modification or integration increases the time or difficulty of servicing the product or degrades performance or reliability.
- e. To perform user maintenance or cleaning or to repair damage, malfunction.
- f. Damage, malfunction or degradation of performance resulting from use of the product in an environment not meeting the

operating specifications set forth in the user manual.

- g. Damage, malfunction or degradation of performance resulting from failure to properly prepare and transport the product as prescribed in published product materials.
- h. Any failure to register the product warranty within 10 days of purchase.
- i. To replace items that have been refilled, are used up, abused, misused, or tampered with in any way.
- j. To install replacement items that are not considered customer replaceable.
- k. To support software not supplied by Covert
- l. To provide software or firmware updates or upgrades.

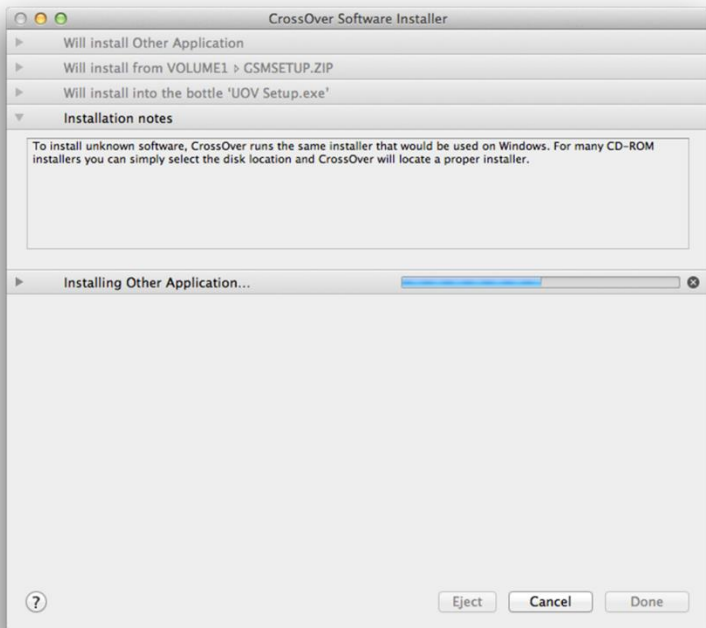
Any service identified in the above list and provided by Covert at the Customer's request shall be invoiced to the customer, at Covert's then current rates for parts, labor and shipping.

THE ABOVE WARRANTIES ARE GIVEN BY COVERT WITH RESPECT TO THIS PRODUCT AND ITS RELATED ITEMS IN LIEU OF ANY OTHER WARRANTIES, EXPRESS OR IMPLIED. COVERT AND ITS VENDORS DISCLAIM ANY IMPLIED WARRANTIES OF MERCHANTABILITY OR FITNESS FOR A PARTICULAR PURPOSE OR ANY SIMILAR STANDARD IMPOSED BY APPLICABLE LEGISLATION. COVERT'S RESPONSIBILITY TO REPAIR OR REPLACE, FOR DEFECTIVE PRODUCTS AND RELATED ITEMS IS SOLE AND EXCLUSIVE REMEDY PROVIDED TO THE CUSTOMER FOR BREACH OF THESE WARRANTIES.

Some states, provinces, and countries do not allow the exclusion or limitation of incidental or consequential damages or exclusions or limitation on the duration of implied warranties or conditions, so the above limitations or exclusions may not apply to you. This warranty gives you specific legal rights, and you may have other rights that vary by state, province, or country.

TO THE EXTENT ALLOWED BY LOCAL LAW, EXCEPT FOR THE OBLIGATIONS SPECIFICALLY SET FORTH IN THIS WARRANTY STATEMENT, IN NO EVENT SHALL COVERT AND ITS VENDORS BE LIABLE FOR ANY INDIRECT, SPECIAL, INCIDENTAL OR CONSEQUENTIAL DAMAGES (INCLUDING LOSS OF PROFITS) WHETHER BASED ON CONTRACT, TORT, OR ANY OTHER LEGAL THEORY AND IRRESPECTIVE OF WHETHER COVERT OR THE VENDOR HAS ADVANCE NOTICE OF THE POSSIBILITY OF SUCH DAMAGES.

## Code Black Set Up on a MAC:



1. With the activated SIM card and SD card in the camera, turn the camera to setup. Press menu then scroll over to the “SYS” tab and go down until you see format, click on it and choose “yes” to format. Scroll to the “NET” tab. Scroll down until “Download Tool” appears. Press OK. Now turn the camera off, eject the SD card and put into your Mac.
2. Go to <http://www.codeweavers.com> There you can download a 14-day “trial” of “Crossover”.
3. Once you have installed “Crossover”—and the program is launched—a dialogue box will appear that gives them several “dropdown” menu options. Click on **“Will Install Other Application.”**
4. Then click on **“Will Install From VOLUME1 ► GSM Setup.ZIP.”**
5. Then click on **“Will Install into the bottle ‘UOV SETUP.exe’”**.
6. A new dialogue box will then pop up, allowing you to locate the SD card within the Finder window, select/click to enter the SD card, and can then select the NET Setup file.
7. Once you click on that—the same dialogue box shown in your “instructions” diagrams in the



manual will appear—and simply follow the steps as your manual outlines.

8. Once you've set all the settings, then “change the path” per your instructions back to the SD card, click OK—and it's done.
9. Remove the SD card and put into the camera—and go through the remaining owner's manual instructions to set up the camera.

## **Personal Carrier Suffix List**

All Carrier

number@email.experttexting.com

Airfire Mobile

number@sms.airfiremobile.com

Alaska Communications

number@msg.acsalaska.com

Alltel (Allied Wireless)

number@message.Alltel.com

Ameritech

number@paging.acswireless.com

Assurance Wireless

number@vmobl.com

BellSouth

number@bellsouth.cl

Bluegrass Cellular  
number@sms.bluecell.com  
number@mms.myblueworks.com

Bluesky Communications  
number@psms.bluesky.as

Boost Mobile  
number@myboostmobile.com

BulkSMS.com  
number@bulksms.net

C Beyond (All Page Wireless)  
number@cbeyond.sprintpcs.com

Cellcom  
number@cellcom.quiktxt.com

Cellular South  
number@csouth1.com

Centennial Wireless  
number@cwemail.com

Chariton Valley Wireless  
number@sms.cvalley.net

Chat Mobility  
number@mail.msgsender.com

Cincinnati Bell  
number@gocbw.com (SMS)  
number@mms.gocbw.com (MMS)

Cingular  
number@cingular.com  
number@mobile.mycingular.com

ClearTalk  
number@sms.clearTalk.us

Consumer Cellular  
number@cingularme.com

Cricket  
number@mms.mycricket.com

C Spire Wireless  
number@cspire1.com

DTC  
number@sms.advantagecell.net

Edge Wireless  
number@sms.edgewireless.com

Element Mobile  
number@SMS.elementmobile.net

Esendex  
number@echoemail.net

General Communications Inc.  
number@mobile.gci.net

Globalstar  
number@msg.globalstarusa.com

Golden State Cellular  
number@gscsms.com

Greatcall  
number@vtxt.com

Hawaiian Telcom Wireless  
number@hawaii.sprintpcs.com

Helio  
number@myhelio.com

Iridium  
number@msg.iridium.com

i-wireless (T-Mobile)  
number.iws@iwspcs.net

i-wireless (Sprint PCS)  
number@iwirelesshometext.com

Kajeet  
number@mobile.kajeet.net

LongLines  
number@text.longlines.com

MetroPCS  
number@mymetropcs.com

Nextech  
number@sms.ntwls.net

Page Plus Cellular  
number@mypixmessages.com

Panacea Mobile  
number@api.panaceamobile.com

Pioneer Cellular  
number@zsend.com

Pocket Wireless  
number@sms.pocket.com

PC Telecom  
number@mobiletxt.ca

Qwest Wireless  
number@qwestmp.com

Rogers Wireless  
number@sms.rogers.com

RoutoMessaging  
number@email2sms.routomessaging.com

Simple Mobile  
number@smtext.com

Southernlinc  
number@page.southernlinc.com

South Central Communications  
number@rinasmms.com

Straight Talk  
number@vtext.com



Solavei  
XXXYYYZZZZ@tmomail.net

Syringa Wireless  
number@rinasms.com

Telus Mobility  
number@mms.telusmobility.com

Ting  
number@message.ting.com

TracFone  
number@mmst5.tracfone.com

Unicel  
number@utext.com

Union Wireless  
number@union-tel.com

USA Mobility  
number@usamobility.net

Viaero  
number@mmsviaero.com

Voyager Mobile  
number@text.voyagermobile.com

West Central Wireless  
number@sms.wcc.net

XIT Communications  
number@sms.xit.net

# **Appendix One:**

## **Technical Specifications**

### **Picture Resolution**

12MP

**Lens** F/NO=3.0 FOV (Field of View)=52°

**Network** EVDO RevA

**Bands** 800MHz, 1900MHz

**IR-Flash** 6m, 12m

**Display Screen** 2.0" LCD

**Memory Card** Up to 32GB

### **Video Resolution**

VGA, 720P

**PIR Sensor** Multi Zone

**PIR Sensitivity** Adjustable (High/Normal/Low)

**Trigger Time** 1.2s; (HD version: 1.0s)

**Weight** Less than 1 Pound (without batteries)

**Operation/Storage Tem.** -20 - +60°C / -30 - +70°C

**Trigger Interval** 0s – 60 min.

**Time lapse**

5-55 second (in 5 second increments);  
1-59 minutes (in 1 minute increments);  
1-8 hours (in 1 hour increments);

**Photo Burst** 1–3

**Video Length** 1–60s

**Power Supply** 4AA, 8AA or 12AA

**Stand-by Current** < 0.25 mA (<6mAh/Day)

**Power Consumption**

600 videos (interval=5min, video  
Length=10s) ;

>800 MMS(use 12\*AA batteries)

**Low Battery Alert** LED Indicator

**Mounting** Rope/Belt/Python lock

**Dimensions** 5.6"x4.75"x3

**Operation Humidity** 5% - 90%

**Security authentication** FCC, CE, RoHS

## **FCC Warning Statements:**

This device complies with part 15 of the FCC Rules.

Operation is subject to the following two conditions: (1) This device may not cause harmful interference, and (2) this device must accept any interference received, including interference that may cause undesired operation.

Note: This equipment has been tested and found to comply with the limits for a Class B digital device, pursuant to Part 15 of the FCC Rules. These limits are designed to provide reasonable protection against harmful interference in a residential installation. This equipment generates, uses and can radiate radio frequency energy and, if not installed and used in accordance with the instructions, may cause harmful interference to radio communications. However, there is no guarantee that interference will not occur in a particular installation. If this equipment does cause harmful interference to radio or television reception, which

can be determined by turning the equipment off and on, the user is encouraged to try to correct the interference by one or more of the following measures:

- Reorient or relocate the receiving antenna.
- Increase the separation between the equipment and receiver.
- Connect the equipment into an outlet on a circuit different from that to which the receiver is connected.
- Consult the dealer or an experienced radio/TV technician for help.

Changes or modifications made to this device not expressly approved by UOVision Technology (Shenzhen) Co., Ltd. may void the FCC authorization to operate this device.

Note: The manufacturer is not responsible for any radio or TV interference caused by unauthorized modifications to this equipment. Such modifications could void the user's authority to operate the equipment.

**FCC RF exposure warning statements:**

The transmitter must not be co-located or operated in conjunction with any other antenna or transmitter. This equipment complies with the FCC RF radiation exposure limits set forth for an uncontrolled environment.

This equipment must be installed and operated with a minimum distance of 20 cm between the radiator and any part of your body.