

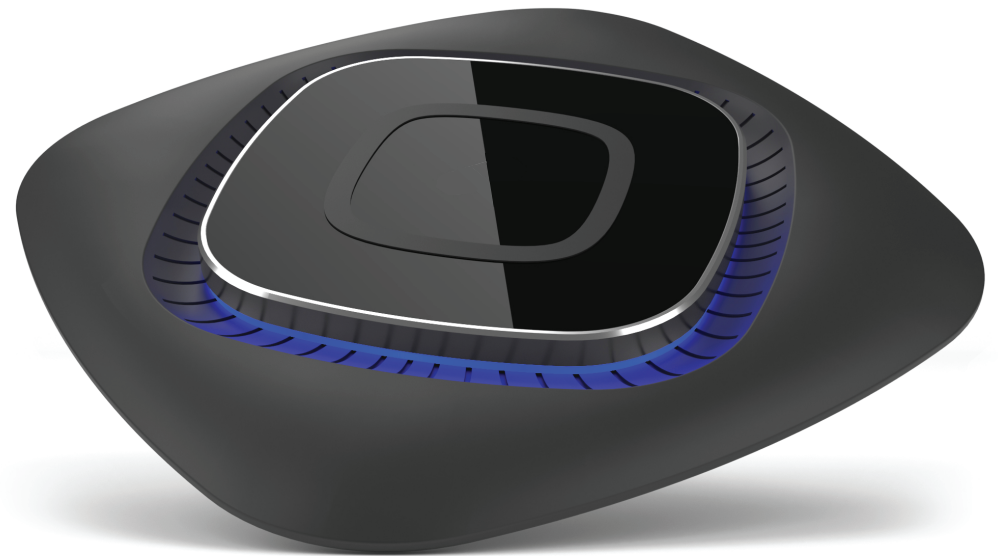
## IMPORTANT SAFETY INSTRUCTIONS

Failure to follow the safety instructions can lead to fire, electrical shock, personal injury or property damage or damage to this product. Make sure to read the entire manual.

- Do not use this unit for anything other than its intended use.
- Keep the unit away from heat source and direct sunlight.
- Do not expose the unit to extremely high or low temperatures.
- Use the product in a location with a temperature of 32°F (0°C) - 95°F (35°C).
- Do not let the unit come in contact with water or any other liquid. If the unit becomes wet, immediately unplug it from the power source.
- Do not handle the unit, USB cord or wall charger with wet hands.
- Do not let the dust or other things accumulate on the product and the wall charger.
- Do not use the unit if it has been dropped or damaged in any way.
- Repairs to electrical equipment should only be performed by a qualified electrician. Improper repairs may place the user at serious risk.
- If you have an electrical device, such as a pacemaker, consult a physician before using this product.
- Do not place magnetic cards or similar items near this product.
- Use the specified power source and voltage.
- Do not use a voltage converter/travel adapter.
- Make sure the wall charger is inserted all the way into the electrical outlet. When not in use, unplug the wall charger.



## Fast wireless charge



### Wireless Charging Base QI 10W UNIVERSAL WIRELESS CHARGING PAD PLAQUE DE CHARGE SANS FIL QI UNIVERSELLE UNIVERSAL DRAHTLOSES QI-LADEGERÄT

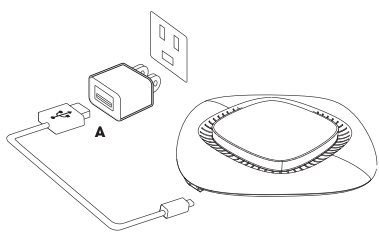
## USER MANUAL

### CHARGING YOUR DEVICE

#### PLEASE NOTE

- **MAKE SURE YOUR DEVICE IS QI-COMPATIBLE.**
- **CASE COMPATIBILITY: DO NOT USE A METAL CASE.**
- **IF YOU ARE HAVING ISSUES CHARGING, REMOVE YOUR CASE.**

Connect the provided Micro-USB cable with your wall adapter. Now connect to your charging pad. Always place pad on a flat surface such as a desk or nightstand.



Place your Qi-Enabled device directly onto the charging pad. Refer to diagrams below for proper placement.



Charging time will depend on the type of device you are using. Your device will display your charging progress.

You may remove your device from the charging pad at any time.

### LED INDICATOR STATUS

#### STANDBY:

The LED indicator will light up Blue when the unit is plugged in and on standby.

#### CHARGING PULSE:

The LED indicator will have a "Pulse" or "Breathing" like effect. This means the charging pad is charging your device safely.

#### FULLY CHARGED:

The LED indicator will turn off once your device is fully charged.

### CLEANING

Your charging pad will need cleaning time to time. To clean, wipe it using a soft and dry cloth. Never use any abrasive cleaning agents.

### SPECIFICATIONS

#### 10W QI-Wireless Fast Charging Pad:

**Input:** 5V/2A - 9V/1.67A

**Output:** 5V/1A - 9V/1.1A

**Transmission Distance:** 5-8mm

**Wireless Power Charging Efficiency:** 85%

**Working Frequency:** 110-205KHz

**Product Dimensions:** 4.35 x 4.33 x 0.37 (inch)

**Fast Charging Function Requires QC2.0 or Higher Power Adapter**

**FCC Caution:**

This device complies with part 15 of the FCC Rules. Operation is subject to the following two conditions: (1) This device may not cause harmful interference, and (2) this device must accept any interference received, including interference that may cause undesired operation.

Any Changes or modifications not expressly approved by the party responsible for compliance could void the user's authority to operate the equipment.

**Note:** This equipment has been tested and found to comply with the limits for a Class B digital device, pursuant to part 15 of the FCC Rules. These limits are designed to provide reasonable protection against harmful interference in a residential installation. This equipment generates uses and can radiate radio frequency energy and, if not installed and used in accordance with the instructions, may cause harmful interference to radio communications. However, there is no guarantee that interference will not occur in a particular installation. If this equipment does cause harmful interference to radio or television reception, which can be determined by turning the equipment off and on, the user is encouraged to try to correct the interference by one or more of the following measures:

- Reorient or relocate the receiving antenna.
- Increase the separation between the equipment and receiver.
- Connect the equipment into an outlet on a circuit different from that to which the receiver is connected.
- Consult the dealer or an experienced radio/TV technician for help.