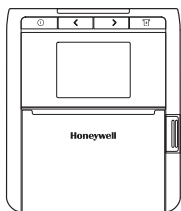


QUICK REFERENCE GUIDE



Lynx 3
Mobile Label Printer

Honeywell

www.honeywellaidc.com

Packing List

■ Standard Accessories

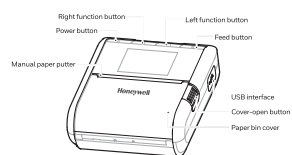
If any items are damaged or missing, please contact the supplier.

Printer	Battery	Type-C USB cable
Power adapter	Quick installation guide	Paper roll

ⓘ The pictures are for reference only, please subject to practicality.

Appearance & Parts

■ Front view

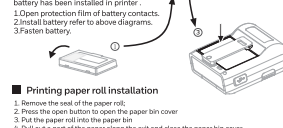


Preparation before using

■ Battery installation

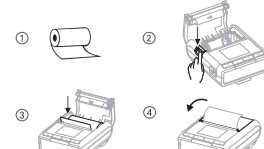
Before product leaving factory, battery has been installed in printer.

1. Open protection film of battery contacts.
2. Install battery refer to above diagrams.
3. Fasten battery.



■ Printing paper roll installation

1. Remove the seal of the paper roll.
2. Press the open button to open the paper bin cover.
3. Put the paper roll into the paper bin.
4. Pull out a part of the paper along the exit and close the paper bin cover.



ⓘ Remark:

1. Paper specification used by printer is: paper width 80mm (Bilateral adjustable) paper roll diameter 40mm.
2. Pay attention to direction of paper roll. If it's reversed it may cause empty printing or non-process paper-feeding.

■ Battery charge

Standby charge

Plug power adapter into power outlet and plug USB interface into the printer.
Charging Port: AC 100V-240V~50/60Hz
Charging Battery indication symbol: battery status: bar scrolling displays.
Charging complete: The icon indicate the battery is fully charged, the buzzer will the sound alarm.



⚠ Warning

Use power adapter that is not approved by Honeywell International Inc. may cause damage to printer.

ⓘ Remark

It can print during charging.

⚠ Attention

Please don't fetch out battery during charging.

Use function

■ Basic features

Power on: Keep pressing power button for 3 seconds.

Power off: Keep pressing printer power button during starting up, then printer closes.
Paper feeding: Press the feed button under the continuation paper model then paper feed for 5mm, press paper feed button in label / black label model, paper feeding to label gap or black label.

Sleep wake: When printer start up if there is no pressing operation or data transmission within 5 seconds, printer will enter into dormant status automatically. If press power button will wake the printer.
(The printer will wake up automatically when it receives data).

Use function

■ Setting

Enter setting interface: Long press set button to enter selection interface under on status (non-dormant status).
Press set button: Enter to set next selection.
Press paper-feeding button: Change option parameter.
Press power button: Confirm set.

	Print Info	Press power key to print self-feeding page
	0-4	Set wide range resolution (Coarse adjustment)
	0-4	Setting small range resolution (Fine adjustment)
	0-4	print speed Setting
	Chinese/English	Language Setting
	Open/Close	Beeeping on/off
	Gap/None/None	Paper Types Setting
	Open/Close	Set whether to turn on the paper
	Open/Close	Set whether to turn on the paper
	10/30/60/99	Set the screen saver display
	1-5	Set automatic shutdown
	CPL/ESC	Set Command mode
	ISO/5B	Set according to the paper width
	On/Off	Set Low temperature mode

Mobile Label Printer has both models: Bluetooth 5.2(SPP+BLE) it can communicate with iPhone, iPad, Android. The effective communication distance is less than or equal to 10 meters. It support for AirSync protocol and can use Bluetooth function on the Wechat platform.

Fault diagnosis

Fault phenomenon	Fault reason	Solution
Printer only feeds paper during printing, and has no printing data.	Printing paper is installed upside down.	Change printing paper installation direction.
Printer prints blurry	Printer movement is polluted due to long-term not being cleaned. Printing paper coloration is not good.	Movement needs to be cleaned. Please set higher brightness or use printing paper with better coloration.
Printed receipt characters become fuzzy within several months or even several weeks.	Printing paper quality is not good. Preservation temperature of receipt is too high.	Please use thermal printing paper with long retention period. Please preserve under normal temperature (about 20 °C)

Maintenance

■ Printer daily maintenance

1. Clean printer exterior and paper tank: please scrub printer surface and paper tank interior slightly with wringed wet cloth. Pay attention to that wet cloth must be wringed out completely.
2. Clean printer mechanism: printer mechanism must be cleaned regularly, especially when printing quality decrease. Cleaning method is as follows: scrub printer mechanism surface spots and residual gum on label paper with degreasing cotton dipping with anhydrous alcohol until scrubbed clearly.
3. If discover there is water in printer interior, please close printer and fetch out battery immediately and let printer dry naturally.
4. If printer won't use for long-time, please fetch out battery and preserve it separately.

■ Printing paper usage and preservation

1. New purchased printing paper shall avoid direct sunlight or preservation in high-temperature locations. Please don't tear packaging paper during preservation.
2. The receipt after printing shall be preserved under condition of normal temperature (about 20°C) and humidity. This can prolong receipt preservation period effectively.
3. If users need to preserve receipt for a long period, please select long-lasting thermosensitive printing papers.

Product Technical Indicators

Project	Printing parameter
Printing method	Thermal line
Printing paper width	80mm
Paper roll diameter	Max. 40mm/s
Printing speed	Max. 127mm/s
Resolution/ratio	203dpi
Storage	DDR 64MB FLASH 64MB
Interface (Optional)	USB Micro USB Bluetooth BTS24BLE WIFI
Battery	7.4V 2800mAh
Gross Weight	About 0.4kg (including battery)
Paper type	Support for continuous paper and label paper

Battery recycling

This product adopts Li-ion rechargeable battery. In order to protect environment, please don't dispose waste battery at will. Supplier will provide battery recycling service for you.



Informações Regulatórias Brasil
Este equipamento não tem direito à proteção contra interferência prejudicial e não pode causar interferência em sistemas devidamente autorizados.

Para maiores informações, consulte o site da ANATEL: www.anatel.gov.br.

Support

To search our knowledge base for a solution or to log into the Technical Support portal and report a problem, go to www.hsmcontactsupport.com.

Limited Warranty

For warranty information, go to www.honeywellaidc.com and click Get Resources > Product Warranty.

Patents

For patent information, see www.hsm patents.com.

Disclaimer

Honeywell International Inc. ("HII") reserves the right to make changes in specifications and other information contained in this document without prior notice, and the reader should in all cases consult HII to determine whether any such changes have been made. The information in this publication does not represent a commitment on the part of HII.
HII shall not be liable for technical or editorial errors or omissions contained herein; nor for incidental or consequential damages resulting from the furnishing, performance, or use of this material. HII disclaims all responsibility for the selection and use of software and/or hardware to achieve intended results. This document contains proprietary information that is protected by copyright. All rights are reserved. No part of this document may be photocopied, reproduced, or translated into another language without the prior written consent of HII.
© 2019 Honeywell International Inc. All rights reserved.

This device complies with Industry Canada licence-exempt RSS standard(s).

Operation is subject to the following two conditions: (1) This device may not cause interference, and (2) This device must accept any interference, including interference that may cause undesired operation of the device.

Le présent appareil est conforme aux CNR d'Industrie Canada applicables aux appareils radio exempts de licence.

L'exploitation est autorisée aux deux conditions suivantes:

(1) l'appareil ne doit pas produire de brouillage, et

(2) l'utilisateur de l'appareil doit accepter tout brouillage radioélectrique subi, même si le brouillage est susceptible d'en compromettre le fonctionnement.

This device complies with part 15 of the FCC Rules. Operation is subject to the following two conditions: (1) This device may not cause harmful interference, and (2) this device must accept any interference received, including interference that may cause undesired operation.

Note: This equipment has been tested and found to comply with the limits for a Class B digital device, pursuant to part 15 of the FCC Rules. These limits are designed to provide reasonable protection against harmful interference in a residential installation.

This equipment generates uses and can radiate radio frequency energy and, if not installed and used in accordance with the instructions, may cause harmful interference to radio communications. However, there is no guarantee that interference will not occur in a particular installation. If this equipment does cause harmful interference to radio or television reception, which can be determined by turning the equipment off and on, the user is encouraged to try to correct the interference by one or more of the following measures:

-Reorient or relocate the receiving antenna.

-Increase the separation between the equipment and receiver.

-Connect the equipment into an outlet on a circuit different from that to which the receiver is connected.

-Consult the dealer or an experienced radio/TV technician for help.

Any Changes or modifications not expressly approved by the party responsible for compliance could void the user's authority to operate the equipment.

This **LNx3 Mobile Printer** meets the government's requirements for exposure to radio waves. The guidelines are based on standards that were developed by independent scientific organizations through periodic and thorough evaluation of scientific studies. The standards include a substantial safety margin designed to assure the safety of all persons regardless of age or health.

FCC RF Exposure Information and Statement The SAR limit of USA (FCC) is 1.6 W/kg averaged over one gram of tissue.

MODEL: **LNx3-1** (FCC ID:HD5-LNx3-1) has also been tested against this SAR limit. The highest SAR value reported under this

standard during product certification for when properly worn on the body is 1.35W/kg. This device was tested for typical

body-worn operations with the back of the Mobile Printer kept 0 cm from the body. To maintain compliance with FCC RF

exposure requirements, use accessories that maintain a 0 cm separation distance between the user's body and the back of the

Mobile Printer. The use of belt clips, holsters and similar accessories should not contain metallic components in its assembly.

The use of accessories that do not satisfy these requirements may not comply with FCC RF exposure requirements, and should be avoided.