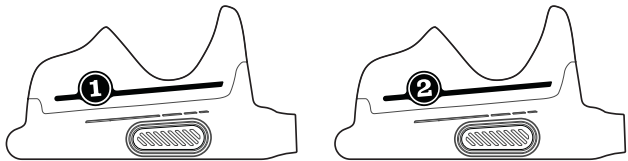




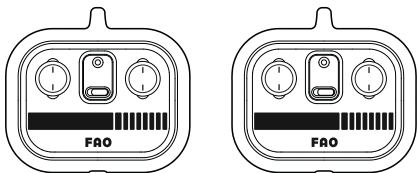
BOT BUMPER CARS

AGES
6+

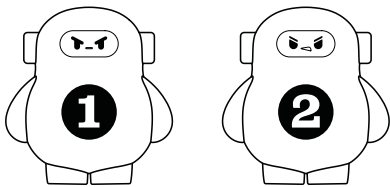
CONTENTS



2 Bot Bumper Cars



2 Remote Controls



2 Ejecting Drivers

SAFETY PRECAUTIONS

- Adult supervision is recommended when operating the vehicles.
- Always drive responsibly and make sure driving paths are clear. Never drive towards or in close proximity to people or animals. Never drive on streets or roadways to avoid traffic hazards.
- Keep fingers, hair, and loose clothing away from tires and all moving parts while the vehicles are in motion.
- Avoid exposing vehicles and remote controls to water. Avoid driving through water. Never drive outdoors in rain or snow. Never leave the vehicles or remote controls outdoors overnight.
- Do not expose vehicles or remote controls to extreme temperatures.
- Do not leave vehicles or remote controls near sources of heat or under direct sunlight for extended periods.
- Do not sit, step, stand, or place objects other than the included driver figurines on the vehicles. The vehicles are not designed to support extra weight.
- Do not disassemble or modify vehicles or remote controls.
- Thoroughly inspect vehicles and remote controls before every use. If vehicles or remote controls appear worn, frayed, splintered, cracked, or broken in any manner, discontinue use and discard immediately.

ALKALINE BATTERY WARNINGS

- Do not mix old and new batteries.
- Do not mix alkaline, standard (carbon-zinc), or rechargeable batteries.
- Alkaline batteries are recommended. Use only the specified voltage.
- Insert batteries using the correct polarity. Always use, replace, and recharge (if applicable) batteries under adult supervision.
- Do not attempt to charge non-rechargeable batteries.
- Do not short-circuit the battery supply terminals.
- Do not dispose of batteries in fire: batteries may explode or leak.
- Remove batteries before storing.
- Recycle or dispose of batteries according to federal, state, and local laws.
- Keep these instructions for future reference.

This device complies with Part 15 of the FCC Rules. Operation is subject to the following two conditions: (1) this device may not cause harmful interference, and (2) this device must accept any interference received, including interference that may cause undesired operation.

NOTE: This equipment has been tested and found to comply with the limits for a Class B digital device, pursuant to Part 15 of the FCC Rules. These limits are designed to provide reasonable protection against harmful interference in a residential installation. This equipment generates, uses and can radiate radio frequency energy and, if not installed and used in accordance with the instructions, may cause harmful interference to radio communications.

However, there is no guarantee that interference will not occur in a particular installation. If this equipment does cause harmful interference to radio or television reception, which can be determined by turning the equipment off and on, the user is encouraged to try to correct the interference by one or more of the following measures:

- Reorient or relocate the receiving antenna.
- Increase the separation between the equipment and receiver.
- Connect the equipment into an outlet on a circuit different from that to which the receiver is connected.
- Consult the dealer or an experienced radio/TV technician for help.

Warning: Changes or modifications to this unit not expressly approved by the party responsible for compliance could void the user's authority to operate the equipment.

Model No.: 1018898

FAO® and FAO Schwarz® names and logos are trademarks or registered trademarks. www.fao.com

Distributed by and © 2024 MerchSource, LLC. Irvine, CA 92618. All rights reserved.

For customer support, please call 1-888-987-6533.

Printed in China.

KEEP THIS INSTRUCTION MANUAL AS IT CONTAINS IMPORTANT INFORMATION FOR FUTURE REFERENCE.

Due to continuous product improvements, the illustrations in this manual may differ slightly from the actual product.



WARNING:

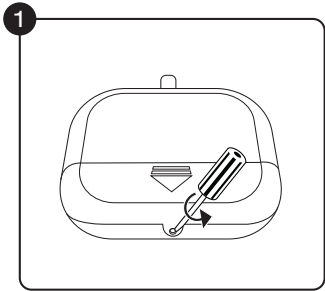
CHOKING HAZARD - Small Parts.
Not for Children under 3 years of age.



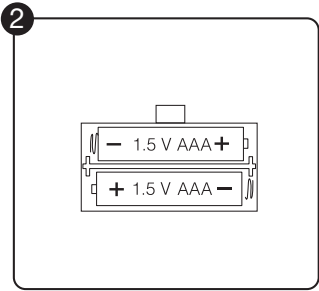
BOT BUMPER CARS

AGES
6+

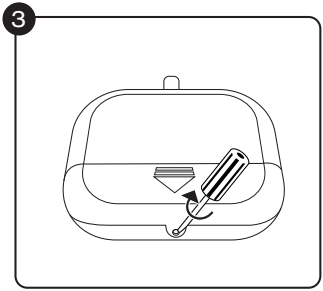
BATTERY INSTALLATION



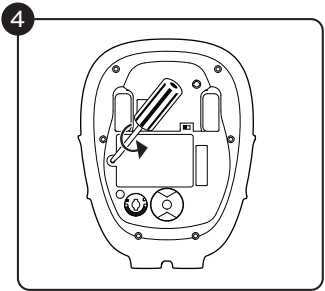
Using a Phillips-head screwdriver, remove the screw by turning it counterclockwise and remove the battery cover from the remote.



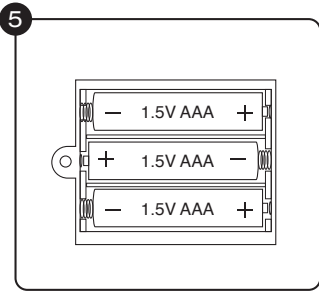
Insert 2 AAA 1.5V batteries (not included) in the orientation shown.



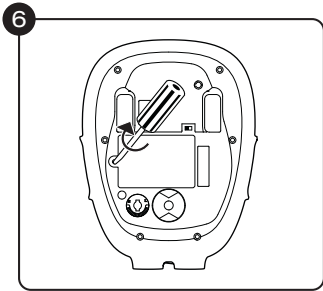
Replace the battery cover and screw by turning it clockwise.



Using a Phillips-head screwdriver, remove the screw by turning it counterclockwise and remove the battery cover from the vehicles.



Insert 3 AAA 1.5V batteries (not included) in the orientation shown.

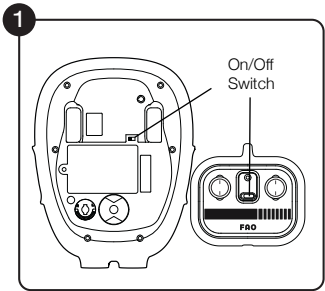


Replace the battery cover and screw by turning it clockwise.

MULTIPLE DRIVERS

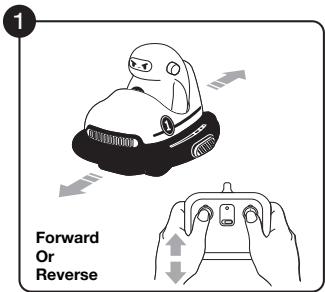
• The remote controls connect to the vehicles using 2.4GHz digital channel selection that allows up to 16 drivers to race side by side in the same wireless range without interference. Pair each vehicle and remote separately.

START UP

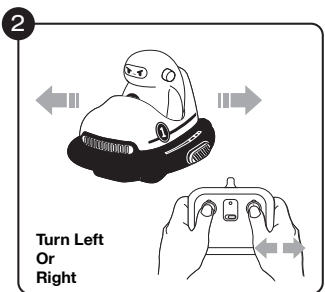


1. Make sure the remote controls and vehicles are powered off.
2. Flip the power switch on the first remote control to power on the remote control. The status light will glow and begin fading on and off to indicate the remote control is in pairing mode and ready to pair with a vehicle.
3. Flip the power switch on the bottom of the first vehicle to the on position to power on the vehicle. The vehicle will automatically pair with the remote control.
4. Wait for the status light on the remote control to quit fading on and off. It will stay solidly lit when pairing is successful.
5. If pairing is unsuccessful within 60 seconds, power off both the remote control and vehicle and then repeat steps 2 through 4.
6. Pair the second vehicle and remote control by following the same steps.
7. If pairing is interrupted or out of range, the remote control and vehicle will both enter pairing mode and attempt to reconnect. Move the remote control and vehicle closer together. If pairing is unsuccessful within 60 seconds, power off both the remote control and vehicle and then repeat steps 2 through 4.
8. When finished driving, press the power button on the remote control to power off the remote control and flip the power switch on the bottom of the vehicle to the off position to power off the vehicle.

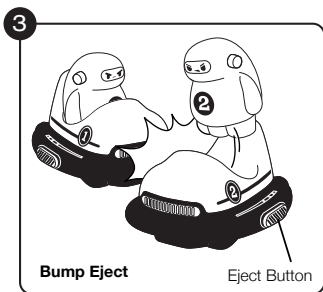
START DRIVING



Push the left joystick to drive forward or reverse.



Push the right joystick to drive turn left or turn right.



Aim for the rival vehicle's side bumpers and send the driver flying!