

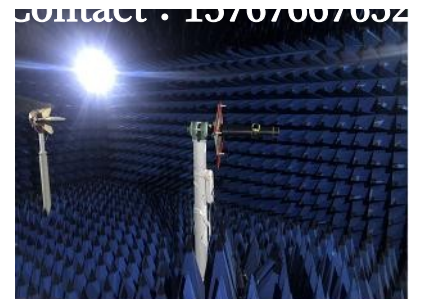


DeepL

Subscribe to DeepL Pro to translate larger documents.
Visit www.DeepL.com/pro for more information.

Zhuoxint ZT1003T antenna commissioning report

DELL-01



Contact : 15767667652

Dedicated to providing
professional translation services

1

Project commissioning profile

2

Report version outline

3

Antenna active parameters

4

Antenna Passive Parameters

5

Antenna environment treatment

6

Summary & Additional Notes

Project commissioning
profile

Machine Type	Tablet			
Plate Type	Motherboard			
Frequency band and antenna material	Main Antenna	Frequency band		Material Quality
		2G	GSM850/900/1800/1900	FPC
		3G	WCDMA B1/2/5/8	
		4G	LTE B2/4/5/7/12/17/28AB	
	Other antennas	GWB	1575.42MHz/2.450GHz	FPC
		DRX	1710MHz-2700MHz	FPC



深圳市昱晟通讯设备有限公司

Yusheng Communications-equipment Co.,LTD

**Performance
Requirements**

Execution
according to
customer
requirements

**Main antenna
active**

Test	GSM 850			EGSM 900		
Channel	128	190	251	1	62	124
TRP(dBm)	26.56	26.74	26.51	25.13	24.64	24.54
TIS(dBm)			-102.43			-100.35

Test	DCS 1800			PCS 1900		
Channel	512	698	885	512	661	810
TRP(dBm)	24.88	25.14	25.27	25.46	25.32	24.75
TIS(dBm)			-102.21			-102.56

**Main antenna
active**

Test	WCDMA_I			WCDMA_II		
Channel	10562	10700	10838	9662	9800	9938
TRP(dBm)	17.66	17.85	17.71	18.09	18.14	17.66
TIS(dBm)			-103.23			-103.18

Test	WCDMA_V			WCDMA_VIII		
Channel	4357	4408	4458	2937	3013	3088
TRP(dBm)	16.75	17.23	17.43	16.26	15.31	14.19
TIS(dBm)			-102.41			-100.66

Main antenna
active

Test	FDD B2			FDD B4		
Channel	18650	18900	19150	20050	20175	20350
TRP(dBm)	18.35	18.89	18.78	18.78	18.45	18.66
TIS(dBm)			-93.26			-93.51
Test	FDD B5			FDD B7		
Channel	20450	20525	20600	20800	21100	21400
TRP(dBm)	18.23	18.41	18.36	17.32	18.51	18.25
TIS(dBm)			-91.32			-93.14
Test	FDD B12			FDD B17		
Channel	23035	23095	23155	23780	23790	23800
TRP(dBm)	16.78	16.64	16.44	16.52	16.69	16.72
TIS(dBm)			-91.38			-91.53



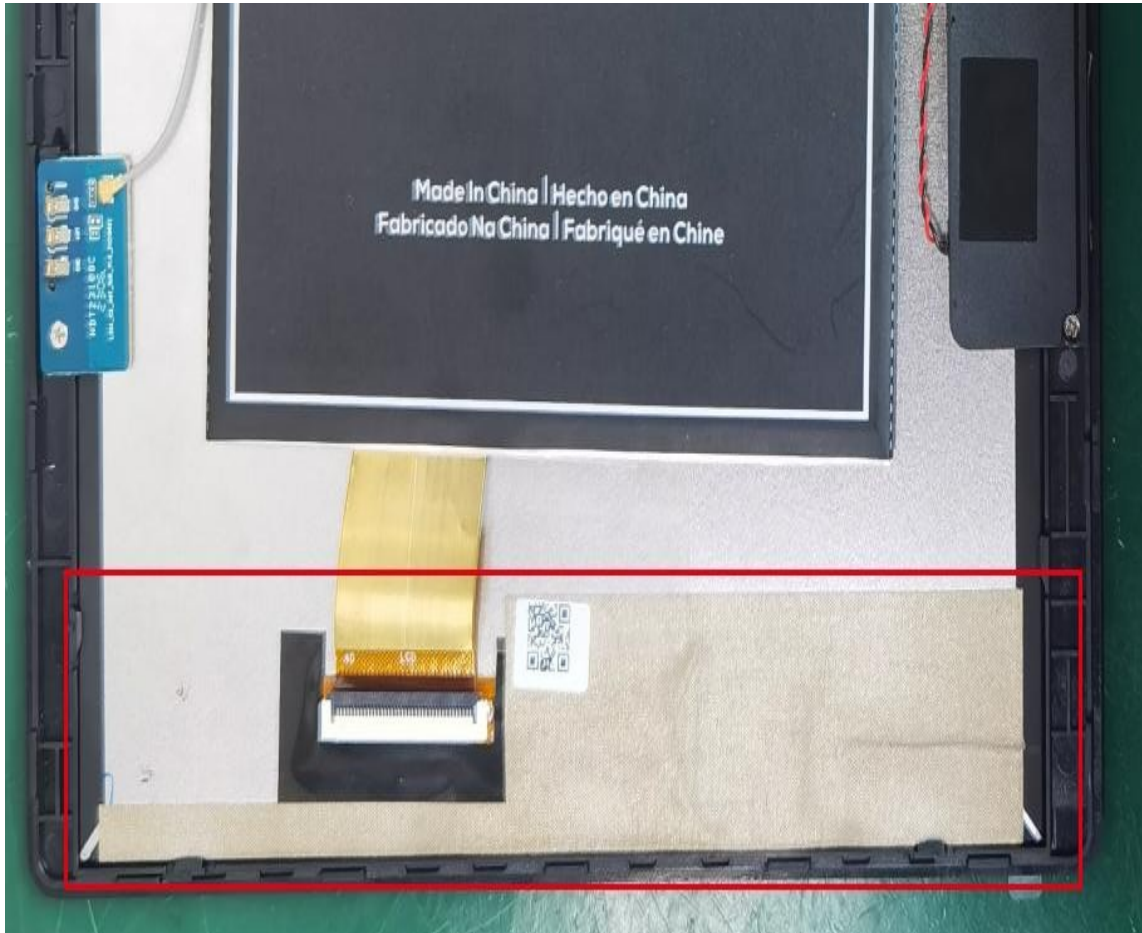
Main antenna
active

Test	FDD B28A			FDD B28B		
Channel	27260	27360	27460	27410	27510	27610
TRP(dBm)	16.41	16.63	16.88	16.49	16.74	17.22
TIS(dBm)			-91.63			-91.52

GPS test

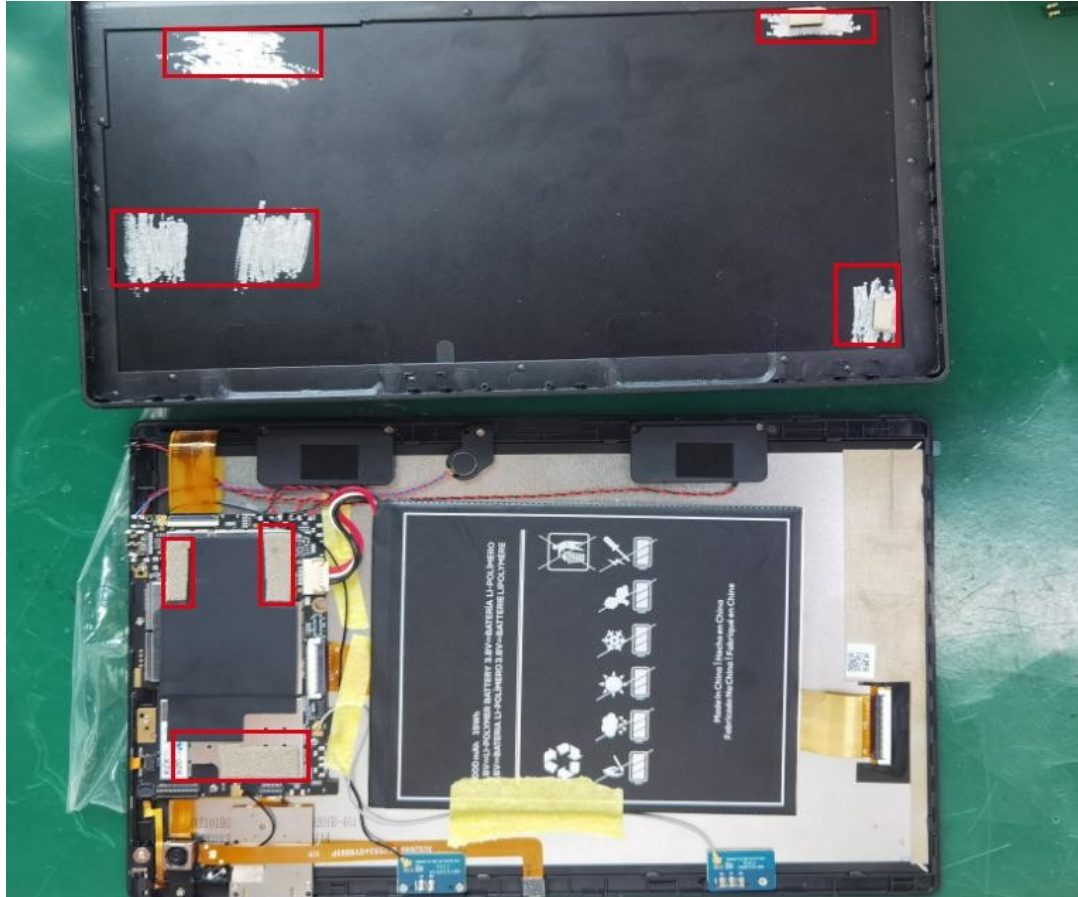


Antenna environment



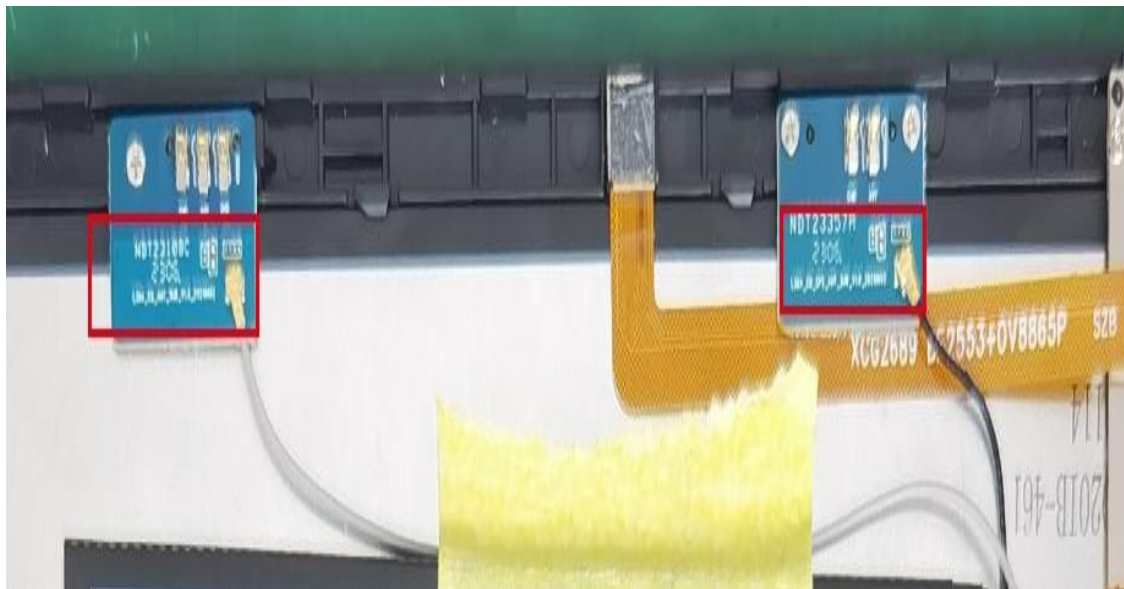
1、Conductive cloth shielding screen FPC

Antenna environment



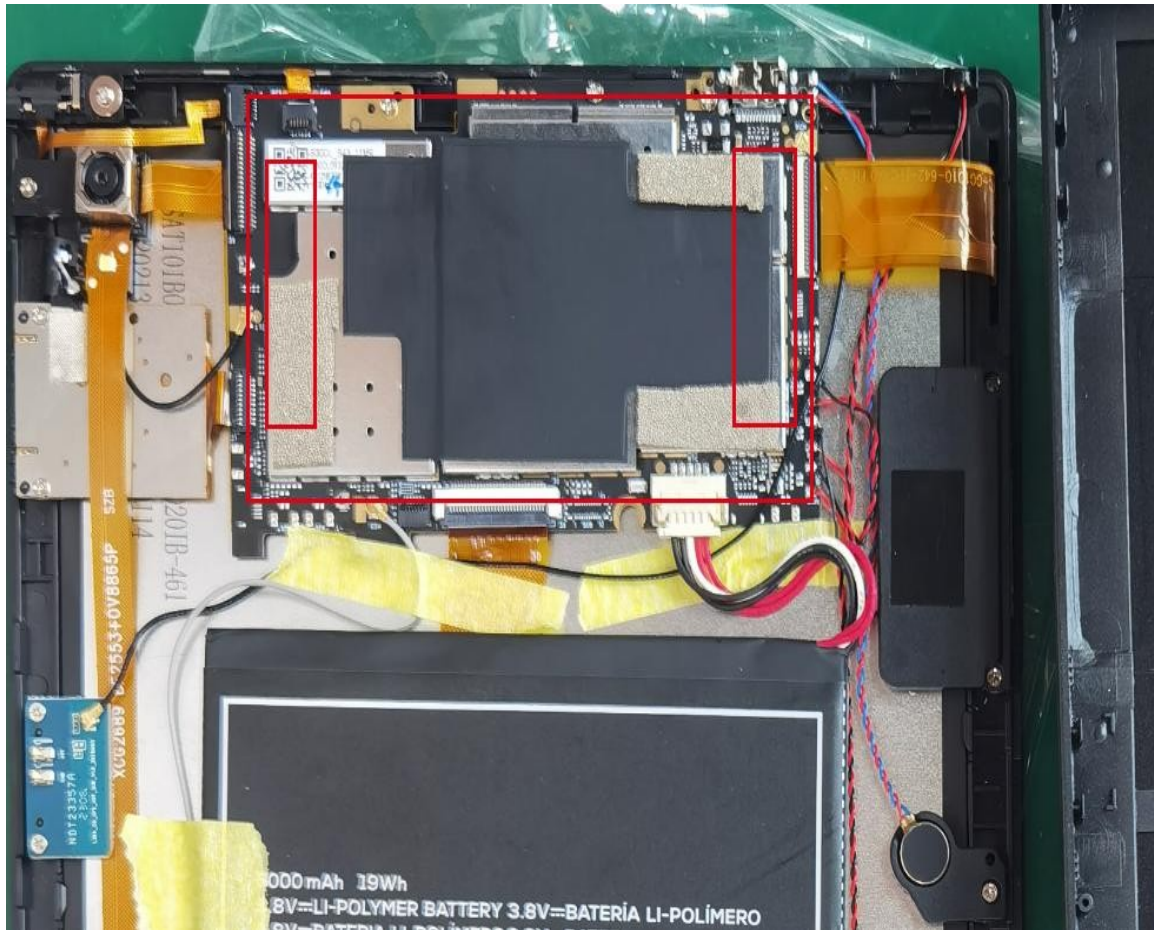
- 1、The back shell zinc alloy needs laser engraving grounding
- 2 the motherboard paste

Antenna environment



1, TRX and GWB small board
leakage of copper at the paste
sponge and screen grounding

Antenna environment



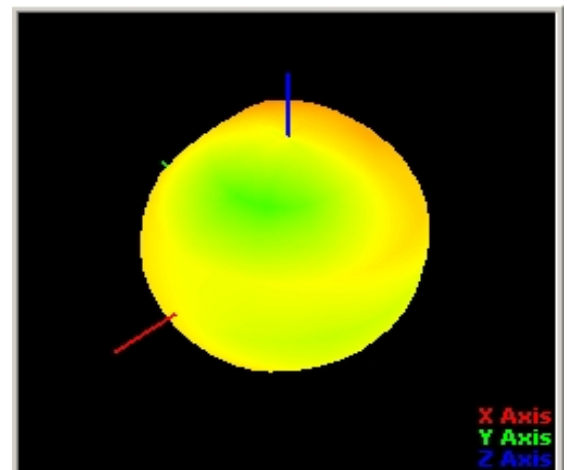
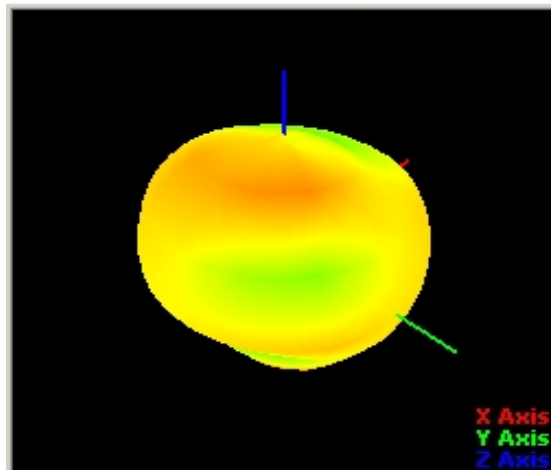
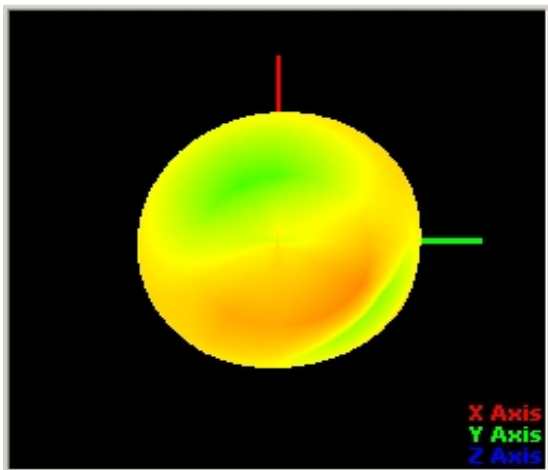
1, the back of the motherboard
paste sponge and screen

Antenna

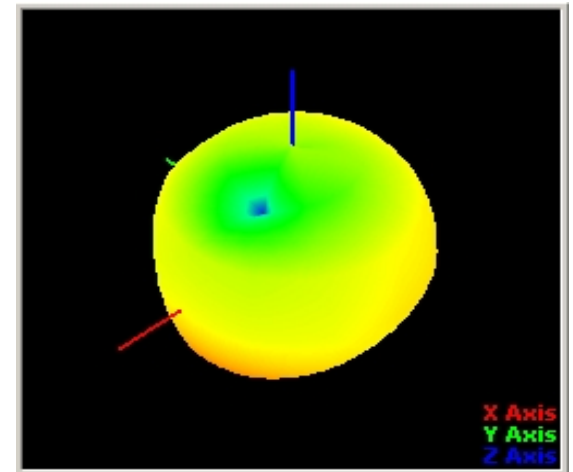
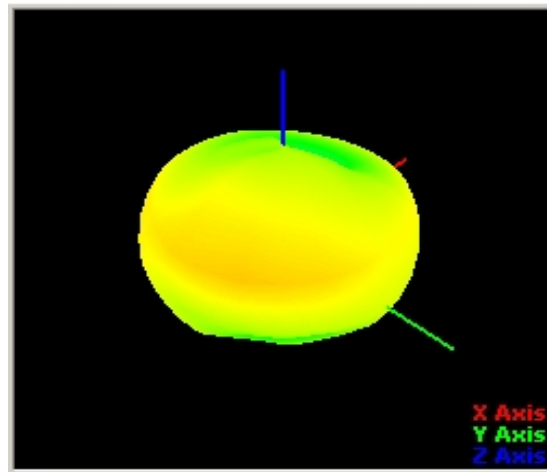
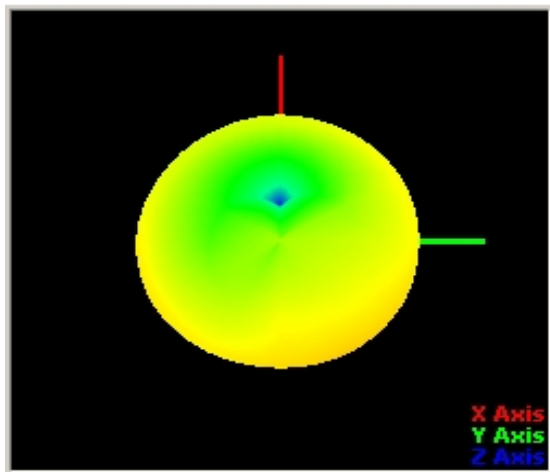
Band		Gain (MAX)	
GSM850	0.67	LTE B28	0.62
EGSM900	0.48	GPS	1.25
DCS1800	0.49	WiFi	1.13
PCS1900	0.55	BT	1.13
WCDMA B1	0.58	5Gwifi	1.36
WCDMA B2	0.55		
WCDMA B5	0.67		
WCDMA B8	0.48		
LTE B2	0.55		
LTE B4	0.52		
LTE B5	0.67		
LTE B7	0.61		

LTE B12	0.62
LTE B17	0.62

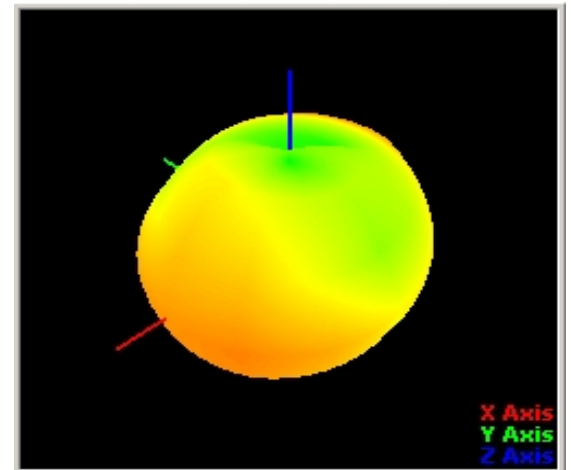
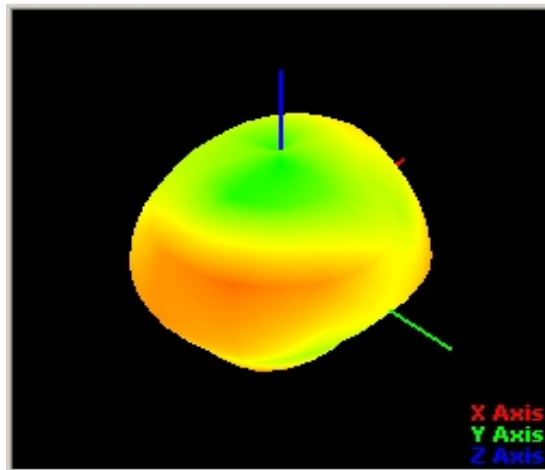
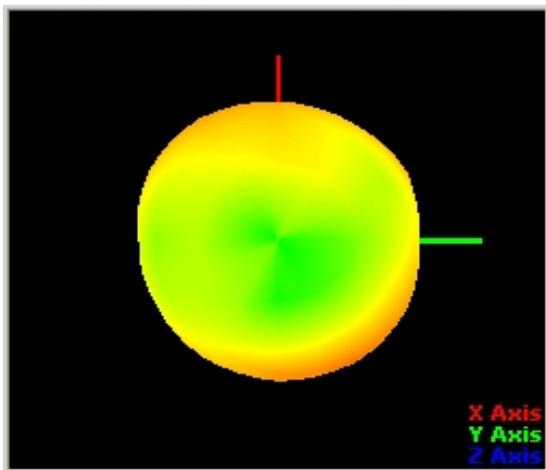
LTE Band12/17/28AB Passive



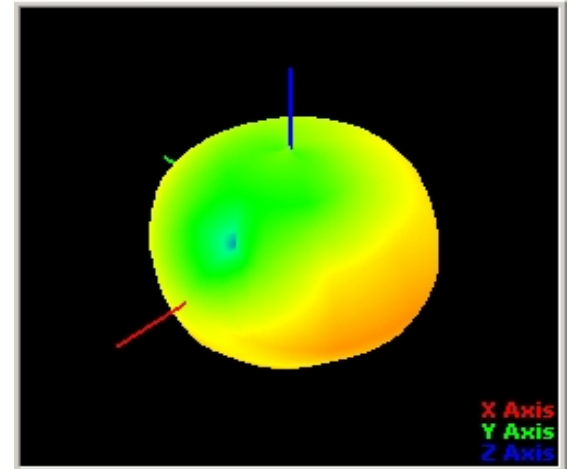
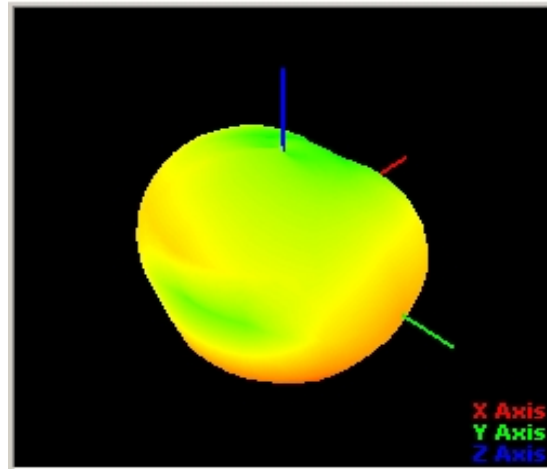
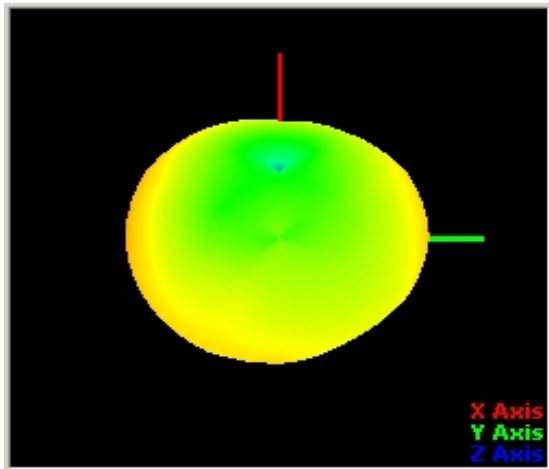
GSM900/WCDMA900 Passive Apple Chart



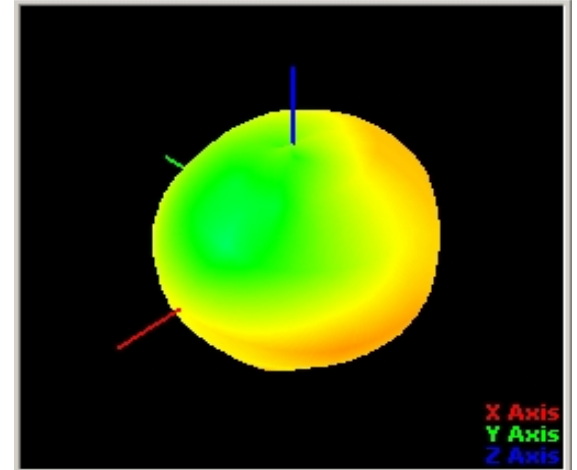
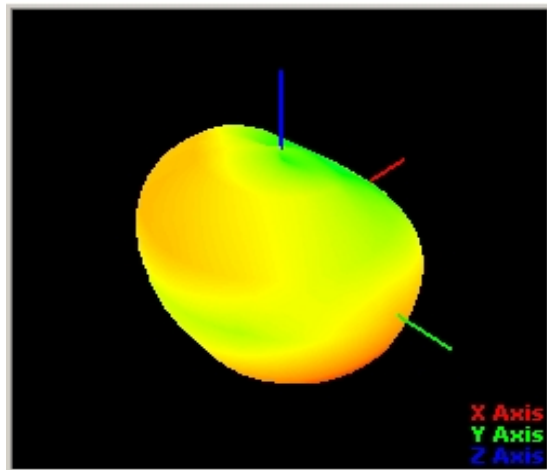
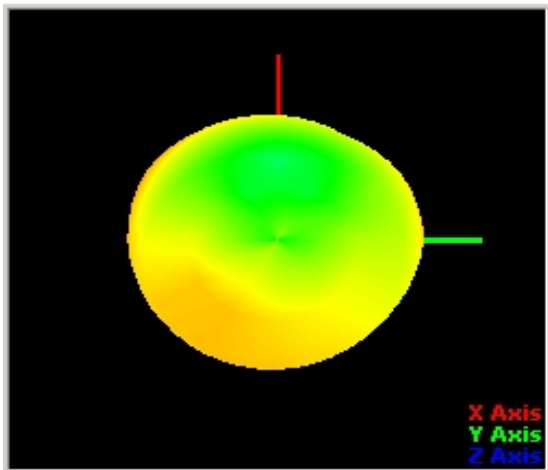
GSM850/WCDMA850/LTE Band5 Passive



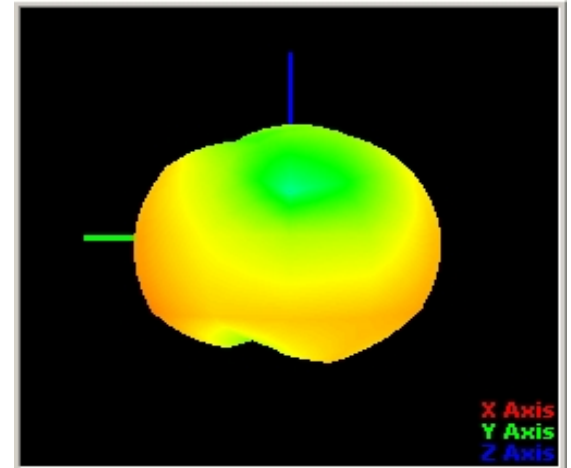
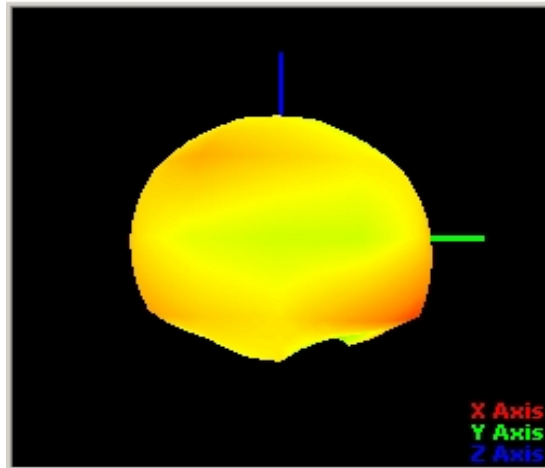
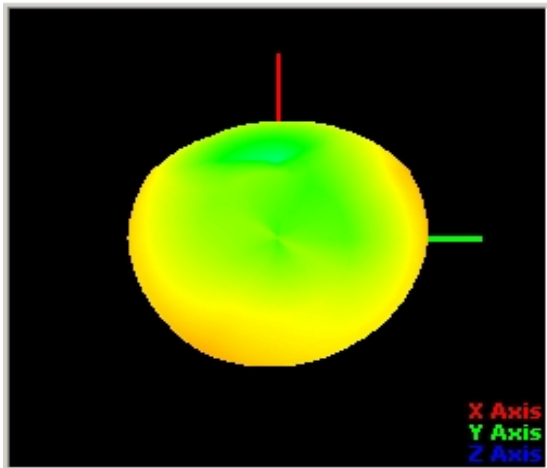
LTE Band4 Passive Apple



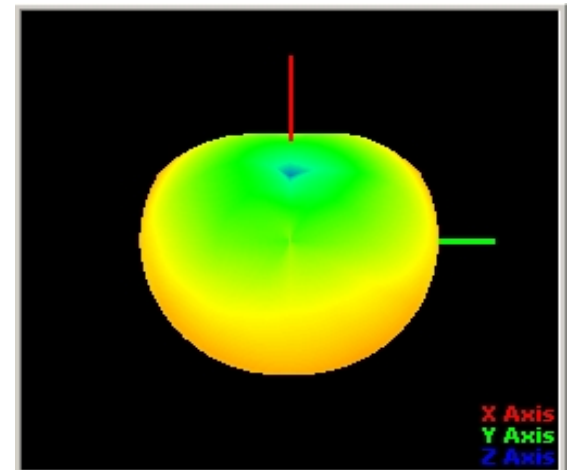
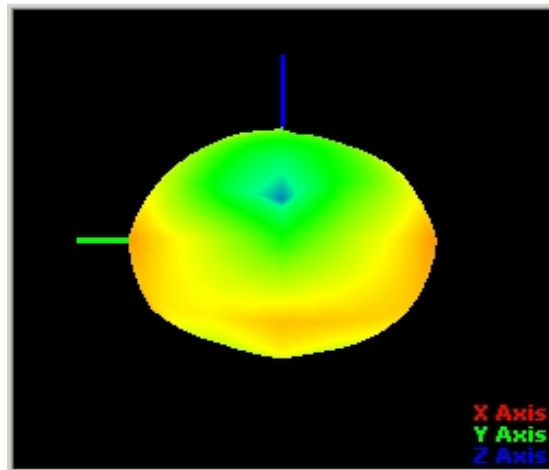
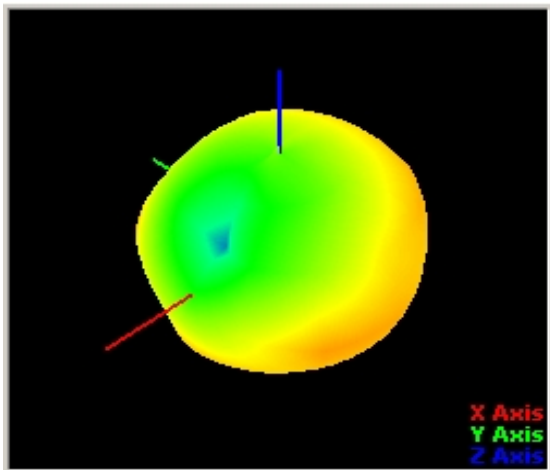
GSM 1800 Passive Apple



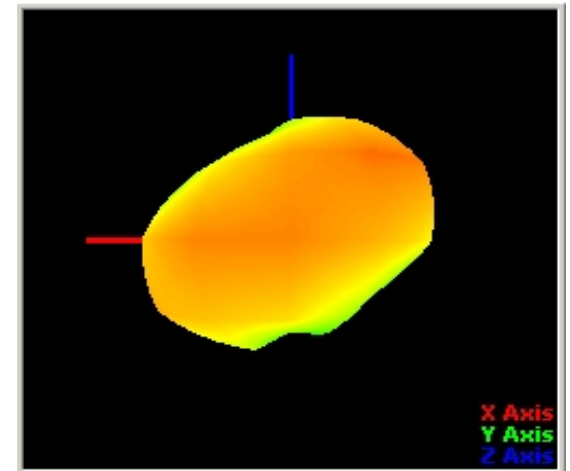
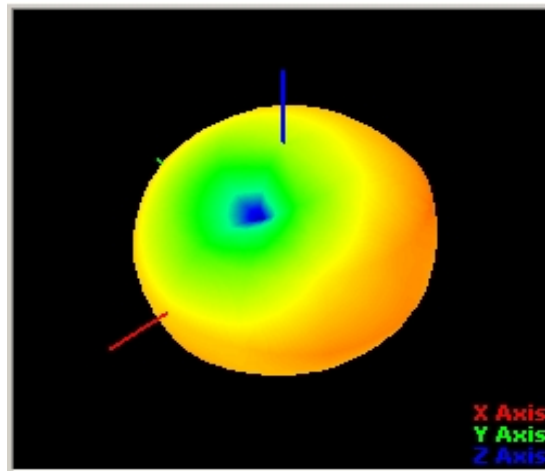
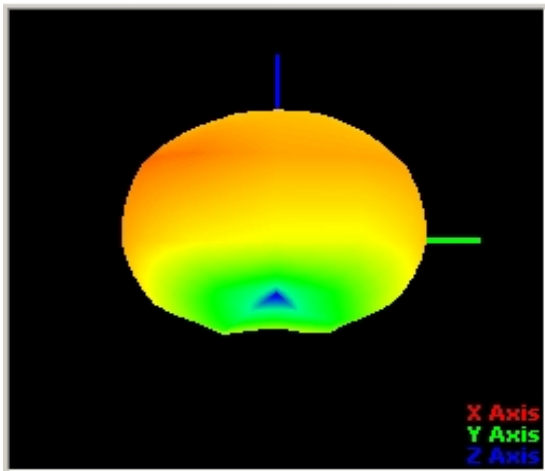
GSM1900/WCDMA1900/LTE Band2 Passive



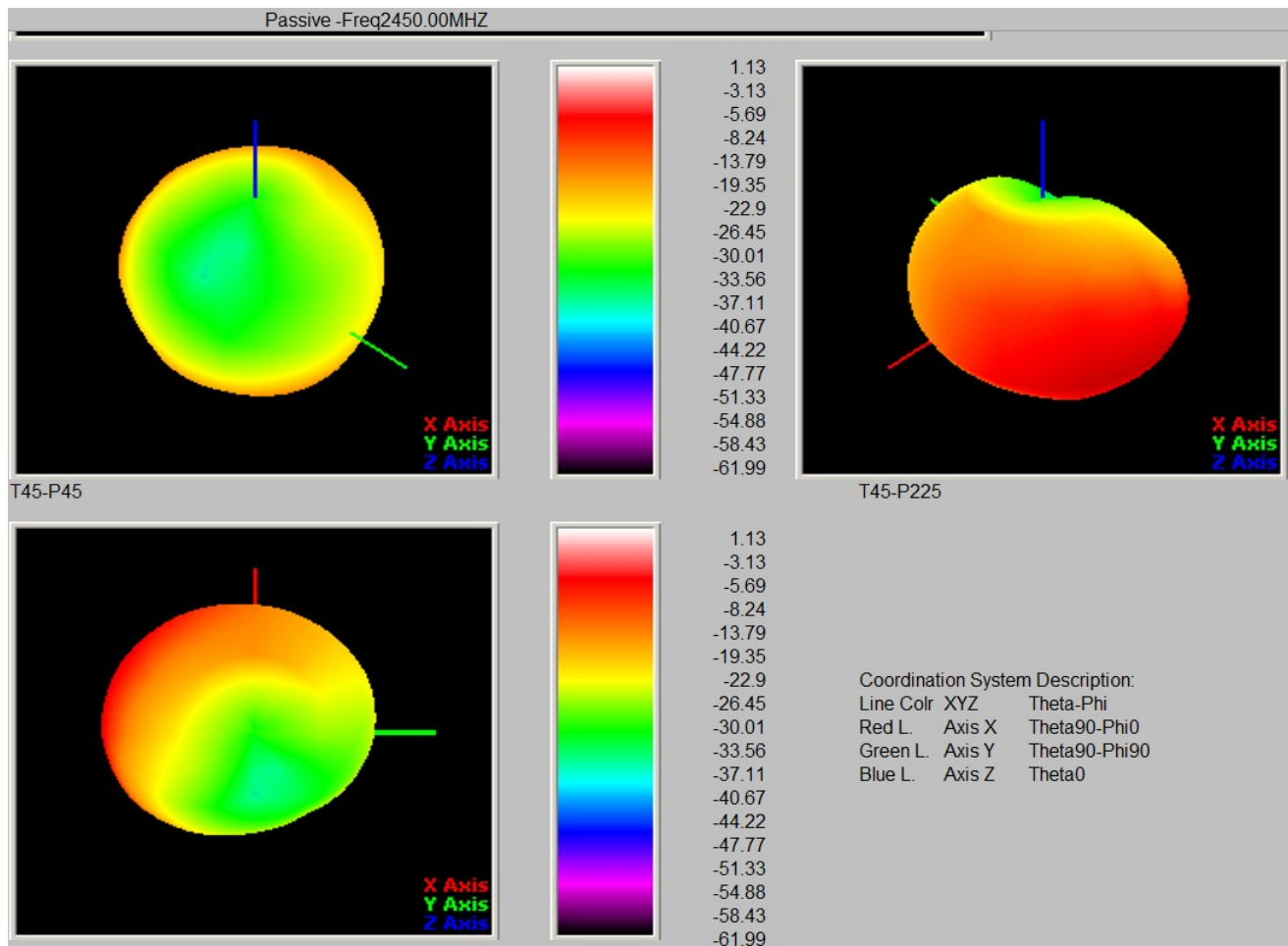
WCDMA2100 Passive Apple



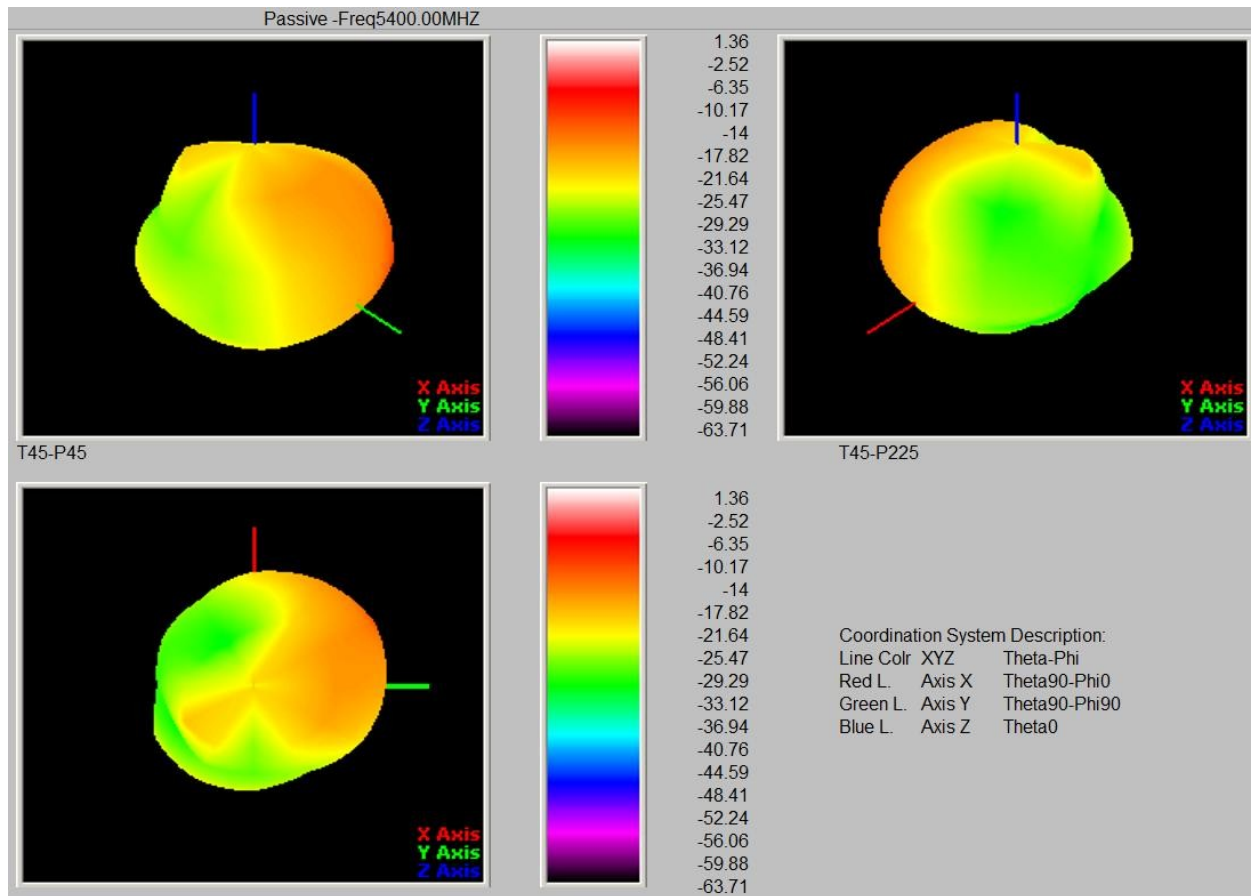
LTE Band7 Passive Apple Chart



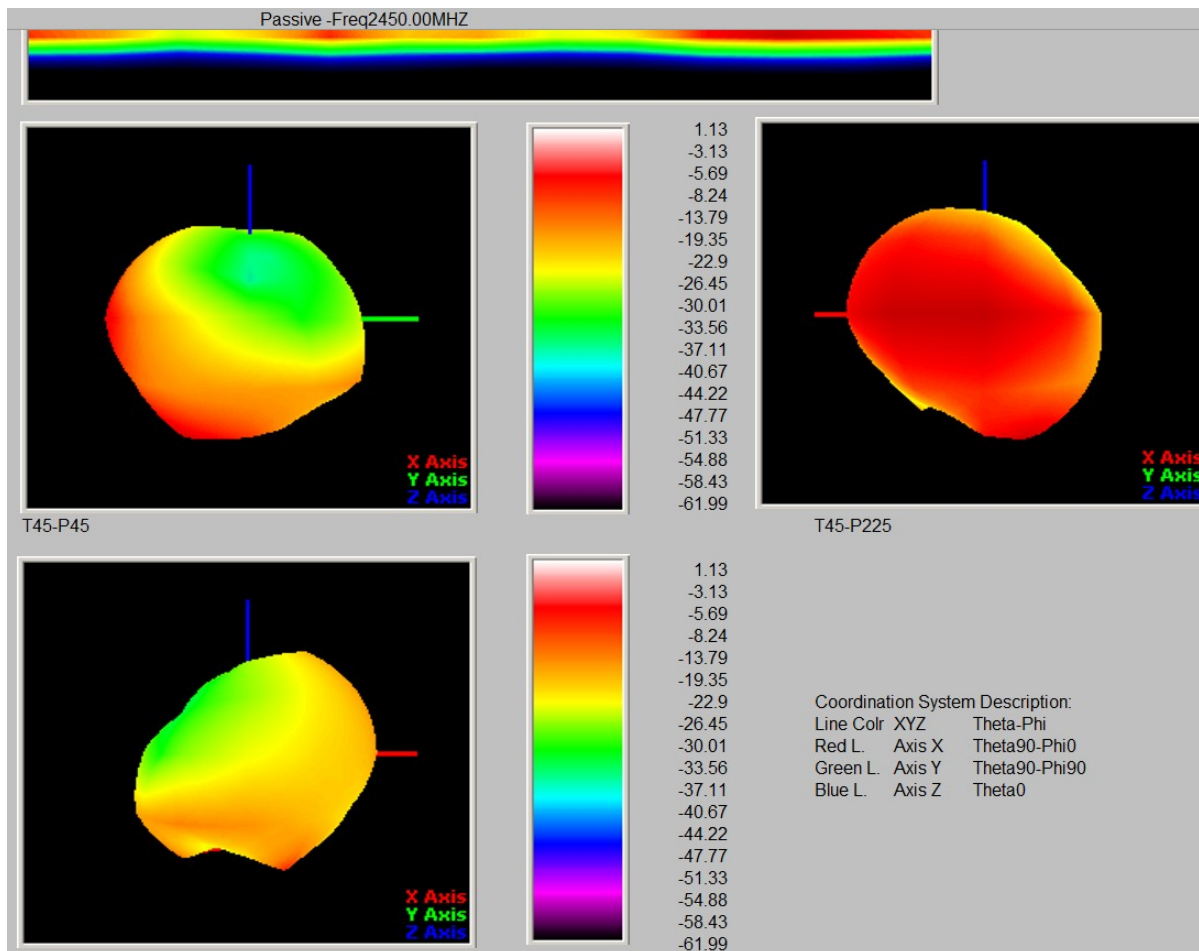
WiFi2.4G Passive Gain Chart



WIFI5G Passive Gain Chart



BT Passive Gain



Thank you!



Shenzhen Address: **4th** Floor, Building **2**, Nantai

Yunchuanggu, Guangming New Area, Shenzhen Tel:

0755-23984257

Fax: **0755-86090455**