



LINPA WORLD

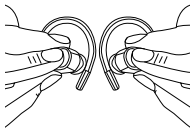
User Manual

Bluetooth Wireless Earbuds T3

- 18-month limited warranty
- Lifetime technical support
- support@linpaworld.com
- Facebook: @LinpaOfficial

Connection

Pair with Your Device :



Taking the earbuds from the charging case, the left LED lights alternately flash blue and red, the right LED lights off. (Make sure tear off transparent static sticker on the bottom of the earbuds)

Enter pairing mode "T3"

The LED light off

Connected

Tips:

- After booting, no connection automatically shuts down within the 120s
- Connected for 20 minutes without any playback, it will auto shutdown
- When turning off the Bluetooth function of the phone, the earbuds will shut down automatically within 120s.

Bluetooth®

Devices T3



Pairing issues

Pairing issues:

The left and right sides can be used separately. When one side works, how do I pair my earbuds from single mode to stereo mode?

Step 1->: Put them back to the case.

Step 2->: Delete "T3" from Bluetooth menu on your device, if your device has been connected "T3" .

Step 3->: Taking the earbuds from the charging case, both earbuds are turned on, the LED lights alternately flash blue and red, Double click on the "R" side. They will force the headphone to pair. After the pairing is successful, "R" side light is off, " L" side flashing red and blue.

Step 4->: If prompted, enter code "0000".

Controls

Music

Short press	Play/pause songs
Double click(Left)	Previous track
Double click(Right)	Next track
Double click left earbud and hold	Decrease the volume
Double click right earbud and hold	Increase the volume
Tips: If volume too low, increase the volume from earbuds side for Andriod device.	

Calling

Press	Answer/End Call
Long press 2 seconds	Reject the call
Long press 1 second	Reject third party calls
Double click	Connect a new call while retaining the current call
Three-party call	Double-click to switch between the second party and the third party, and there is a 'didi' prompt when switching calls.

Siri/Other voice control software

Connected to your phone/device,

Long press for 2 seconds

Turn On/Off

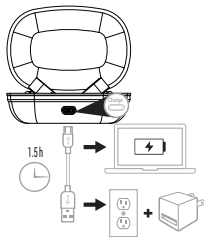
Take the earbuds from the charging case, it will automatically turn on. Or manually press 1s in the off state.

Blue light flashes 3 seconds

Long press 5 seconds

Red light flashes 3 seconds




Charging





① Please check the power adaptor if it is 5V 1A with good quality. [Please don't use 6v,9 v, or 12 v charger chargers that will be the risk of burning the chip]

② Clean the thimble and contacts with alcohol to ensure that the headphone charging contact is conductive.

Earbud status indicator

	Red light flashes slowly	Low battery
	LED steady red	Charging
	LED light off	Fully charged

Charging case status indicator

	LED steady red	Charging
	LED light off	Fully charged



FAQ

Sound and Volume:

Q: The sound quality of the headphones is not good?

A: For all of the headphone products, they need a period of use to get better sound quality. Some components, such as transistors, integrated circuits, and capacitors, are inherently unstable in electrical parameters and can be stabilized after a period of use.

Q: Why cannot synchronize the volume?

A: Our products are mainly compatible with iPhone, Samsung, and other mainstream mobile phones, they may not be able to adapt to all computers, because there are too many Android systems, our headphones may not match all types of Android systems. If the volume cannot be synchronized, it needed to adjust it manually from your phone and computer.

Q: How to keep clear calls?

A: When using with a phone call, please turn the volume to the maximum to avoid making calls in noisy environments, such as subways and buses. These places will affect the signal connection and stability of the earbuds.

Attention

Never disassemble or modify your earphone for any reasons to avoid any damages and danger.

- Do not store the earphone in extreme temperature (under 0 °C or over 45 °C).
- Do not use this earphone during a thunderstorm to avoid irregular function and increased risk of electric shock.
- Do not use harsh chemicals or strong detergents to clean the earbuds.
- Keep the earbuds dry

Maintenance:

1. The Reasons of our products has a battery inside it, also the battery itself has power consumption issue, so please make sure that the last charge is charged once a week in order to prevent low battery power caused by the protection plate self-protection.

Specifications

Model: T3

Standby Time: One year

Talk/Playing Time: 50 hours (50% volume)

Bluetooth Standard: V5.0

Frequency Range: 2.4GHz

Operating Range: 33 feet/10 meters (No obstacles)

Earphone Battery/Charging Case: 100mah/450mah

Charging Time (Earphone/Charging Case): 2 hours/1.5 hours

FCC Requirement

changes or modifications not expressly approved by the party responsible for compliance could void the user's authority to operate the equipment.

This device complies with Part 15 of the FCC Rules. Operation is subject to the following two conditions:

- (1) this device may not cause harmful interference, and
- (2) this device must accept any interference received, including interference that may cause undesired operation.

Note: This equipment has been tested and found to comply with the limits for a Class B digital device, pursuant to Part 15 of the FCC Rules. These limits are designed to provide reasonable protection against harmful interference in a residential installation. This equipment generates, uses, and can radiate radio frequency energy, and if not installed and used in accordance with the instructions, may cause harmful interference to radio communications. However, there is no guarantee that interference will not occur in a particular installation. If this equipment does cause harmful interference to radio or television reception, which can be determined by turning the equipment off and on, the user is encouraged to try to correct the interference by one or more of the following measures:

- Reorient or relocate the receiving antenna.
- Increase the separation between the equipment and receiver.
- Connect the equipment into an outlet on a circuit different from that to which the receiver is connected.
- Consult the dealer or an experienced radio/TV technician for help.