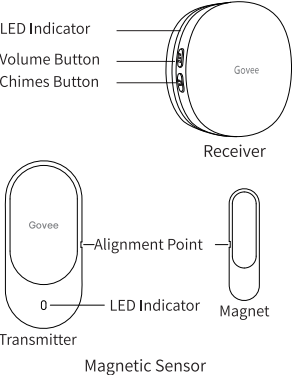


# At a Glance

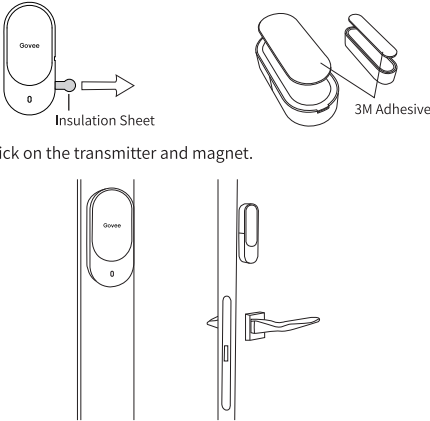


# Specification

Wireless Door Open Chime	
Receiver Working Voltage	AC 110~240V, 50/60HZ
Transmitter Working Voltage	12V
Wireless Range	328ft/100m (No obstacles)
Working Frequency	433.92 ± 0.5 MHz

# Installing Your Devices

- 1 Pull out the insulation sheet;
- 2 Stick on 3M adhesives;
- 3 Stick on the transmitter and magnet.



- Notice:
- a. Make sure points of transmitter and magnet align to each other.
  - b. Keep distance between them less than 20mm/0.06ft.

# Using Your Devices

- 1 How to adjust volume?  
Press volume button on receiver to adjust volume among 5 levels.  
Notice: Only indicator flashes blue when it's mute.
- 2 How to change the chime?
  - a. Place the transmitter beside the receiver;
  - b. Press chime button to select a chime;
  - c. Press chime and volume buttons simultaneously and hold for 5s (The indicator flashes blue quickly);
  - d. Separate the transmitter and magnet.Notice: Please check above steps and try again if failed to change the chime.
- 3 How to pair the transmitter to the receiver?
  - a. Place the transmitter beside the receiver;
  - b. Press the chime and volume buttons simultaneously and hold for 5s (The indicator flashes blue quickly);
  - c. Separate the transmitter and magnet.

- Notice:
- a. Please check above steps and try again if failed to pair.
  - b. One receiver can pair to multiple transmitters and vice versa.

- 4 Low-battery alert  
If the battery is below 5%, the indicator of transmitter shows red while being triggered. Please replace the battery in time.  
Notice: Please open the cover to replace the battery.

# Troubleshooting

- The receiver doesn't ring when sensor is triggered.
- 1 Make sure points of transmitter and magnet align to each other.
  - 2 Keep distance between transmitter and magnet less than 20mm/0.06ft.
  - 3 Make sure the distance between transmitter and receiver is less than 100m/328ft.
  - 4 Keep as less as obstacles between the transmitter and receiver.
  - 5 Check whether the transmitter is in low battery.

We are devoted to offer you a better user experience with our smart and connected technology.

## Warning

- 1 Please ensure the installation is stable enough to prevent devices from falling.
- 2 Do not violently disassemble the devices.
- 3 Keep devices away from water.

## Customer Service

-  Warranty: 12-Month Limited Warranty
-  Support: Lifetime Technical Support
-  Email: support@govee.com
-  Official Website: [www.govee.com](http://www.govee.com)
-  @Govee  @Govee  @Govee  @Goveeofficial

## FCC STATEMENT

This device complies with Part 15 of the FCC Rules. Operation is subject to the following two conditions:  
(1) This device may not cause harmful interference, and (2) This device must accept any interference received, including interference that may cause undesired operation.  
Warning: Changes or modifications not expressly approved by the party responsible for compliance could void the user's authority to operate the equipment.

**NOTE:** This equipment has been tested and found to comply with the limits for a Class B digital device, pursuant to Part 15 of the FCC Rules.

These limits are designed to provide reasonable protection against harmful interference in a residential installation. This equipment generates uses and can radiate radio frequency energy and, if not installed and used in accordance with the instructions, may cause harmful interference to radio communications. However, there is no guarantee that interference will not occur in a particular installation. If this equipment does cause harmful interference to radio or television reception, which can be determined by turning the equipment off and on, the user is encouraged to try to correct the interference by one or more of the following measures:

1. Reorient or relocate the receiving antenna.
2. Increase the separation between the equipment and receiver.
3. Connect the equipment into an outlet on a circuit different from that to which the receiver is connected.
4. Consult the dealer or an experienced radio/TV technician for help.

## FCC Radiation Exposure Statement

This equipment complies with FCC radiation exposure limits set forth for an uncontrolled environment. This equipment should be installed and operated with minimum distance 20cm between the radiator & your body.

**GOVEE**  
BUILD SMART THINGS

# User Manual

MODEL: H5023, H7202

Wireless Door Open Chime