

DC301 Direct Connect

Wireless Programming Tool

Operation Guide



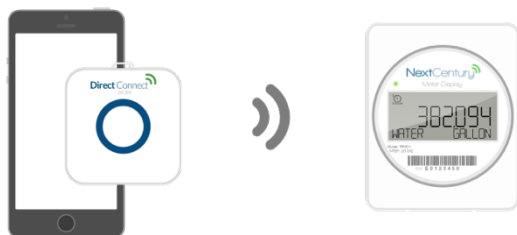
1| Product Overview

The DC301 Direct Connect is a powerful programmer and diagnostic tool designed for technicians installing NextCentury 301+ equipment. The DC301 is fully wireless and easily portable, allowing quick and convenient configuration.

The Direct Connect pairs with a technician's mobile device, and facilitates direct wireless communication. The NextCentury Mobile App is then used to set up meter configurations and perform advanced diagnostics.

The Direct Connect has a simple, single button operation and a high-visibility LED light ring displays the current status. After initially pairing, a technician can simply attach the Direct Connect to their tool bag and it will continue to facilitate communication when needed.

The internal battery powers the Direct Connect for up to 12-hours of continuous use. A power supply and USB-C cable (included) are used for quick charging (2 hour recharge time).



The DC301 wireless programmer facilitates configuration of NextCentury 301+ devices such as the RR301 Remote Reader.

2| Technical Specifications

2.1 – Certifications

FCC ID: 2AB8I-DC301 IC: 20949-DC301

2.2 – Wireless

- BLE (Bluetooth Low Energy)
- 902-928 MHz Unlicensed Band

2.3 – Use Requirements

- Compatible Mobile Device
- NextCentury Mobile App

2.4 – Battery

- Integrated rechargeable
- Up to 12- hours of continuous use

Note: 12-hour average battery life calculated and tested at typical operating temperatures between 70°F - 90°F. Battery life may be reduced when operated outside of this range.

2.5 – Dimensions:

- 65mm x 65mm x 24mm (2.56 in x 2.56 in x .945 in)

2.6 – Operation Environment:

- -20°C to 60°C (-4°F to 140°F)

3| Mobile Device Compatibility

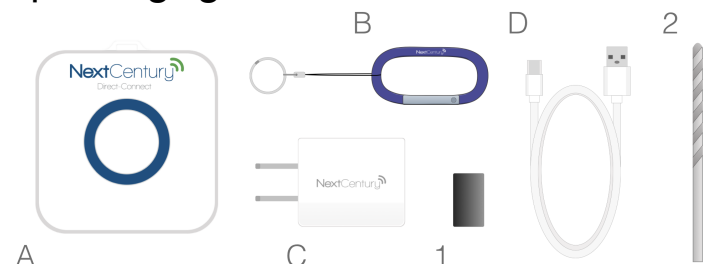
3.1 – Supported Platforms

- **Android:** NCSS Mobile App can be downloaded from the Google Play store.
- **iOS:** NCSS Mobile App can be downloaded from the Apple App Store.

3.2 – Account Login

- A NextCentury user account may be required. Please contact your distributor for more information.

4| Packaging Contents



Programmer

- A - DC301 Wireless Programmer
- B - Carabiner & Keychain
- C - USB Power Supply
- D - USB-C Cable

Accessory Tools

- 1 - Activation Magnet
- 2 - Drill Bit (7/32")

5| Device Setup

5.1 – Charging Battery

- The DC301 Direct Connect comes pre-charged and ready to use.
- To charge, plug USB Power supply into a power outlet and insert USB-C cable into the DC301. The battery will automatically stop charging when full.

5.2 – Powering On

- Press and hold the center button for 3 seconds.
- A green LED ring indicates it is ready to pair.

5.3 – Battery Indicator

- Single tap of the center button will display the current battery charge level.
- A half-illuminated LED ring indicates a full battery.
- Battery level is also indicated in the mobile app.

5.4 – Pairing

- Open the NCSS mobile app and open the side menu. Select the “Direct Connect” menu item.
- The DC301 will appear on this page, tap it to pair.
- A blue LED ring indicates that the DC301 has successfully paired with your mobile device.

5.5 – Powering Off

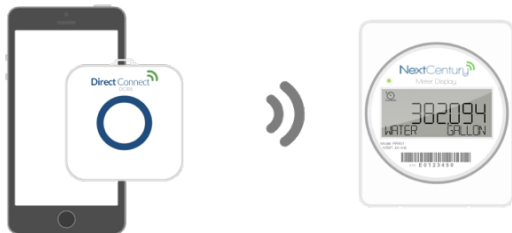
- Press and hold the center button for 3 seconds
- The LED ring will turn off

5.6 – Factory Reset

6| Direct Connect Programming

6.1 – DC301 Applications

- Configuring a NextCentury 301+ family device when a cloud-connected Gateway is not yet available.
- Configuring a non-radio device (RR301 Remote Reader)
- Advanced troubleshooting of a 301+ family device



6.2 – Programming Steps

- Ensure the DC301 is paired with your mobile device and that the Direct Connect page is open on the NCSS mobile app.
- Check in a NextCentury 301-family device, such as an RR301. The device will appear on the Direct Connect page. Tap it to begin configuring.

- For further configuration instructions, refer to the installation guide for your specific 301-family device.

7| NextCentury Mobile App

8| FCC Part 15 and Industry Canada Compliance

This device complies with part 15 of the FCC Rules and Industry Canada license-exempt RSS standard(s). Operation is subject to the following two conditions: (1) this device may not cause interference, and (2) this device must accept any interference, including interference that may cause undesired operation of the device.

This portable equipment with its antenna complies with FCC's and IC's RF radiation exposure limits set forth for an uncontrolled environment.

Le présent appareil est conforme aux CNR d'Industrie Canada applicables aux appareils radio exempts de licence. L'exploitation est autorisée aux deux conditions suivantes: (1) l'appareil ne doit pas produire de brouillage, et (2) l'utilisateur de l'appareil doit accepter tout brouillage radioélectrique subi, même si le brouillage est susceptible d'en compromettre le fonctionnement.

Cet équipement portable avec son antenne se conforme aux limites d'exposition aux radiations RF du FCC et du IC, énoncées pour un environnement non contrôlé.

9| Warranty/Disclaimer Scope of Warranty

NextCentury warrants that all communication equipment manufactured by NextCentury will be free from defects in materials and workmanship under normal use and in accordance with NextCentury's documented installation and operating procedures for a period of three (3) years from the date of manufacture.

Products not manufactured by NextCentury, including without limitation, accessories, attachments, or batteries used in conjunction with NextCentury equipment are warranted, if at all, only by the original manufacturer. NextCentury's warranties do not include replacement of batteries used to power NextCentury products.

Limits of Liability

This warranty only applies to Read Management System components produced by NextCentury and does not cover any products which have been damaged by misconduct, negligence, vandalism, acts of God, excessive operating conditions, or unauthorized attachments or modifications. This warranty will be nullified and voided if products are placed in non-recommended installation application/fashion, or are converted, altered, or treated by other than NextCentury recommended procedures and instructions, or are read by equipment not approved by NextCentury.

NextCentury's liability and customer's exclusive remedy under this warranty is expressly limited to repair or replacement of the product at NextCentury's option, and is conditioned upon the customer returning the product(s) to the location designated by NextCentury within the warranty periods or limits stated herein and pre-paying the freight costs both to and from specified location. In no event shall NextCentury be liable for costs or expenses associated with the removal or installation of products under this warranty.

NextCentury shall have no liability or responsibility to the purchaser or any third party for any loss, cost, expense, damage, or liability, whether direct or indirect, or for special, incidental, indirect, or consequential damages of any kind, regardless of whether such liability is based on breach of contract, tort, strict liability, breach of warranties, or otherwise, and even if advised of the likelihood of such damages. Incidental and consequential damages include, but are not limited to, lost revenue, loss of profits, data, business, or goodwill. In addition, damages resulting from negligence on the part of the customer including, but not limited to, the care and maintenance of NextCentury products, or damages resulting from negligence regarding periodic testing of the product's performance, are not covered under this guarantee.

CHANGES OR MODIFICATIONS NOT EXPRESSLY APPROVED BY NEXTCENTURY MAY VOID THIS WARRANTY AND THE USER'S AUTHORITY TO OPERATE THE EQUIPMENT.

THE FOREGOING WARRANTY IS THE SOLE AND EXCLUSIVE REMEDY AVAILABLE TO THE PURCHASER AND IS IN LIEU OF ALL OTHER WARRANTIES, GUARANTEES, OR REMEDIES, WHETHER WRITTEN OR ORAL, EXPRESSED, OR IMPLIED, INCLUDING WITHOUT LIMITATION, THE IMPLIED WARRANTIES OF MERCHANTABILITY AND FITNESS FOR A PARTICULAR PURPOSE, ALL OF WHICH NEXTCENTURY HEREBY EXPRESSLY DISCLAIMS.

10| Contact Information

For any questions or concerns, please contact NextCentury Submetering Solutions Product Support:

- Phone: (844) 538.8203
 - Email: support@nextcenturymeters.com
-