

# Differences declaration

To whom concern:

Our company Guangzhou Daxin Health Technology Co.,Ltd

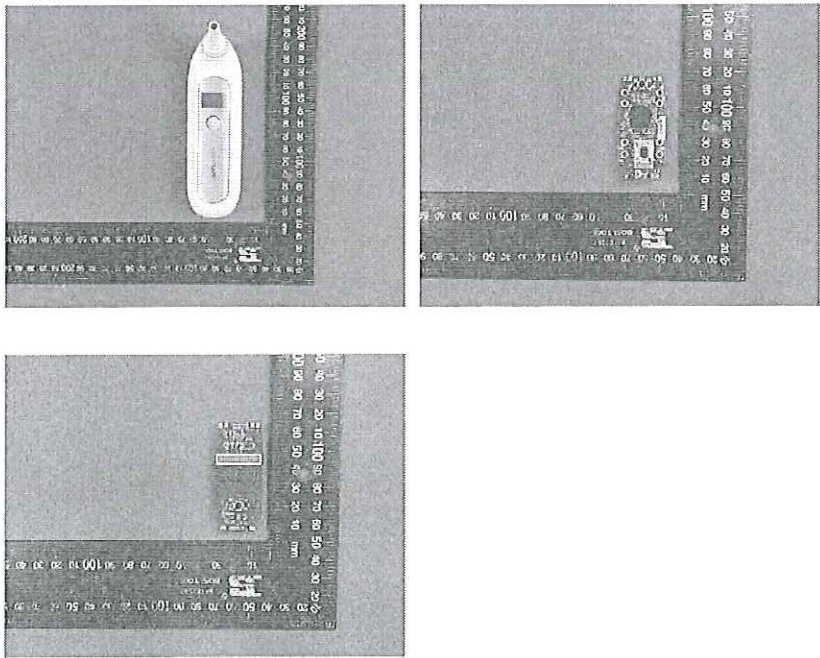
Here by declares:

Multi-model differences are as follows:

Main model: Listed model:	Main Model No.: TE-82				
	Schematic diagram 电路原理图	PCB layout PCB 走线	Appearance 外观结构	Model name 型号命名	Other 其它
Series Model No.: TE-68	<input checked="" type="checkbox"/>	<input checked="" type="checkbox"/>	Δ	Δ	<input checked="" type="checkbox"/>

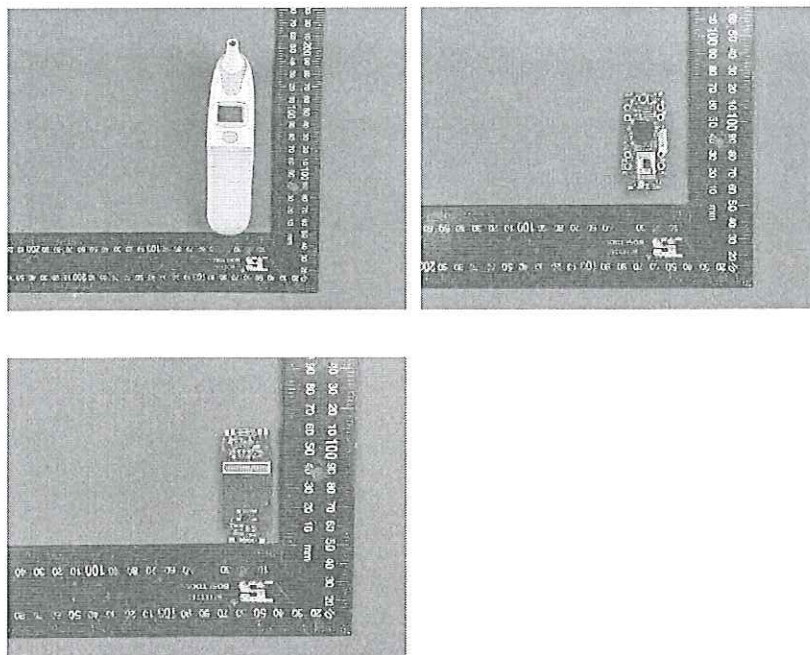
Note:

1. If it is a same, mark it as ☒  
如相同，则标识为☒
2. If there is a difference, mark it as Δ; If there are differences other than model name differences, please describe them in detail  
如有差异，则标注为Δ; 除了型号命名差异外，如有其它差异则需要下面详细描述

Model No.:	Differences describe
Main model no.: TE-82	

Series Model No.:

TE-68



Due to the same schematic and PCB layout for each model, the RF circuits (RF modules) for all models are also identical, and we have added differential radiation testing for each listed model to meet the requirement of sharing one FCC ID.

FCC ID: 2AZ2X-TE82

By:

*Julie zhu*

Julie Zhu

Signature

Printed

Title:

Sales Director

On behalf of :

Guangzhou Daxin Health Technology Co.,Ltd