

LTE/GPS Tracker

# Bolt Mini User Manual

Revision: 1.00

<b>Document Title</b>	<i>Bolt Mini User manual</i>
<b>Version</b>	<i>1.00</i>
<b>Finale Date</b>	<i>2018-04-09</i>
<b>Status</b>	<i>Released</i>
<b>Document Control ID</b>	<i>TRACKER Bolt Mini</i>

# Contents

1 Introduction.....	3
2 Product Overview .....	3
2.1 Appearance.....	3
2.2 LED Description .....	4
3 Getting Started .....	5
3.1 Parts List .....	5
3.2 How GPS position Fix .....	5
3.3 Disassemble Introduction.....	5
3.4 Insert SIM Card.....	7
3.5 Device Power on .....	8
3.6 Install.....	8
4 Frequency.....	8
5 Trouble shooting and Safety info .....	9
5.1 Trouble shooting .....	9
5.2 Safety info .....	9

# 1 Introduction

Bolt Mini use primary batteries. it is a powerful GPS locator which is designed for vehicle, and assets tracking . With superior receiving sensitivity, Its location can be real time or schedule tracked by backend server or specified terminals. Based on the embedded wireless tracking protocol, Bolt Mini can communicate with the backend server through LTE Cat-M network, and transfer reports of emergency, Geo-fencing, device status and scheduled GPS position etc... Service provider is easy to setup their tracking platform based on the functional wireless tracking protocol.

## 2 Product Overview

### 2.1 Appearance



Figure 2-1

## 2.2 LED Description



Figure 2-2

There is one tricolour LED lights in Bolt Mini device, the description as following.

Light	Event	State
LED show blue	GPS fixed	Solid
LED show red	low power	Solid
LED show green	standby mode	Slow Flash
	During Call	Solid

## 3 Getting Started

### 3.1 Parts List

Name	Picture	Remark
Bolt Mini		The LTE/GPS locator.

### 3.2 How GPS position Fix

Your device has an unobstructed view of the sky, lying face up, so it can obtain the initial GPS Fix



Figure 3-1

### 3.3 Disassemble Introduction

1. Dismantling machine tools:  
Tweezers、Cross Screwdriver

2.Machine appearance:



Figure 3-2

3.Disconnect the screw plug



Figure 3-3

4.Disconnect the screw



Figure 3-4

5. Tear down the base

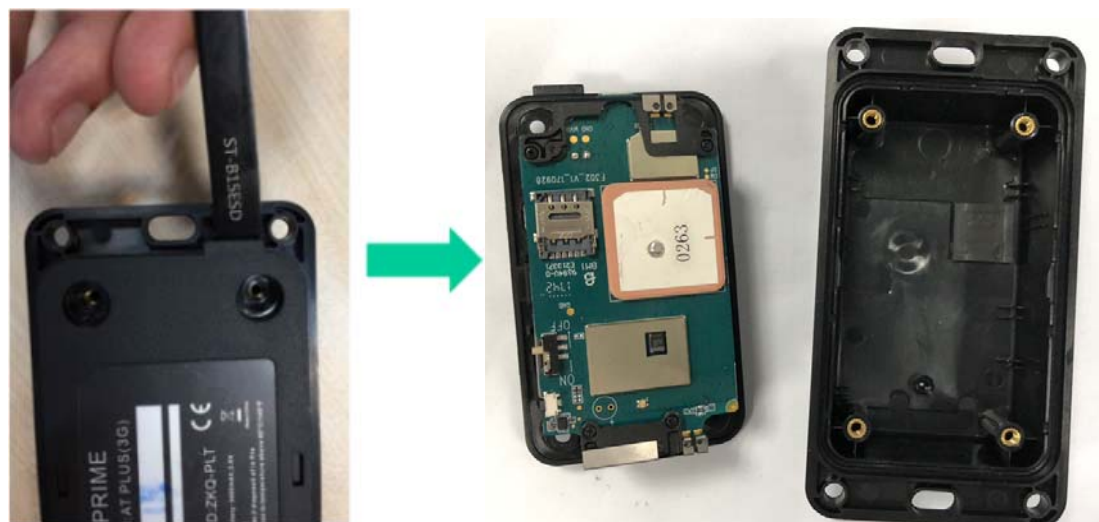


Figure 3-5

### 3.4 Insert SIM Card

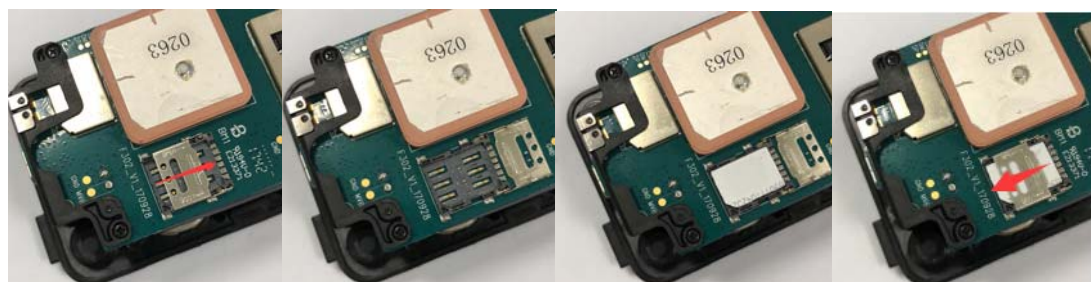


Figure 3-6

### 3.5 Device Power on

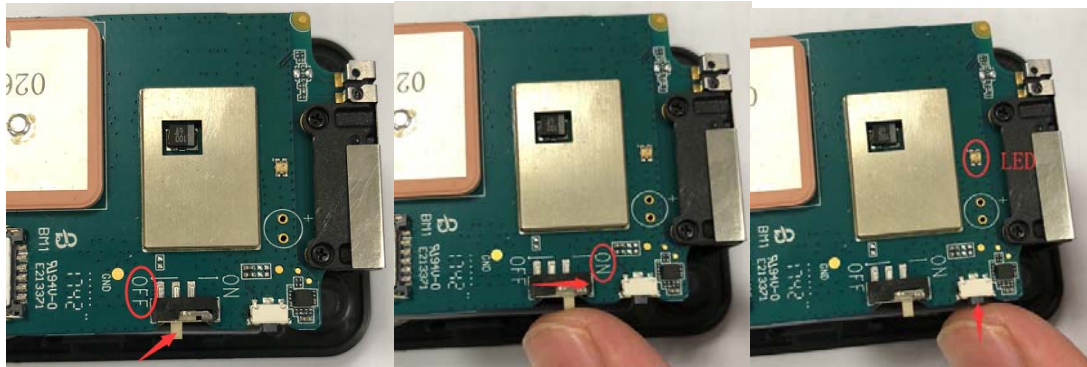


Figure 3-7

### 3.6 Install

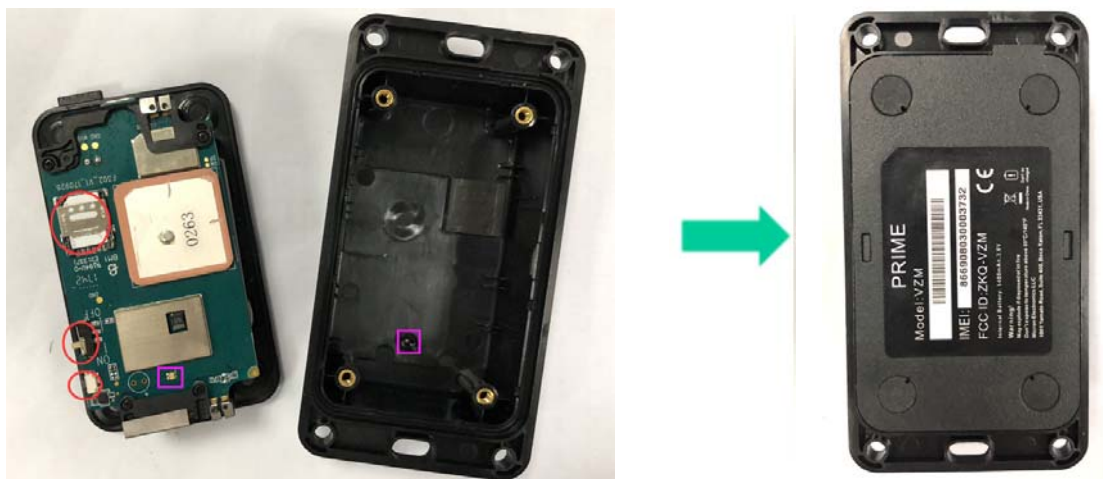


Figure 3-8

## 4 Frequency

LTE CatM:B4(TX 1710-1755MHz,RX 2110-2155MHz)

LTE CatM:B13(TX 777-787MHz,RX 746-757MHz)

GPS:1575.42MHz

WIFI:2.4G



## 5 Trouble shooting and Safety info

### 5.1 Trouble shooting

Trouble	Possible Reason	Solution
Messages can't be reported to the backend server by Mobile network.	APN is wrong. Some APN can not visit the internet directly.	Ask the network operator for the right APN.
	The IP address or port of the backend server is wrong.	Make sure the IP address for the backend server is an identified address in the internet.
Unable to power off Bolt Mini.	The function of power key was disabled by AT+GTFKS.	Enable the function of power key by AT+GTFKS.
Battery can not be charged	The battery has not been used for too long time and has been locked.	Using a external power source with 3.65V DC power supply to active the battery or apply for after sale help.
Bolt Mini can't fix GPS successfully.	The GPS signal is weak.	Please move Bolt Mini to a place with open sky.
		It is better to let the top surface face to the sky. (The same surface with indication LED)

### 5.2 Safety info

*The following items are suggestion for safety use, please pay more attention.*

- ◆ Please do not disassemble the device by yourself.
- ◆ Please do not put the device on the overheating or too humid place, avoid exposure to direct sunlight. Too high temperature will damage the device or even cause the battery explosion.
- ◆ Please do not use Bolt Mini on the airplane or near medical equipment.

## **FCC Caution.**

### **§ 15.19 Labelling requirements.**

This device complies with part 15 of the FCC Rules. Operation is subject to the condition that this device does not cause harmful interference.

### **§ 15.21 Information to user.**

Any Changes or modifications not expressly approved by the party responsible for compliance could void the user's authority to operate the equipment.

### **§ 15.105 Information to the user.**

Note: This equipment has been tested and found to comply with the limits for a Class B digital device, pursuant to part 15 of the FCC Rules. These limits are designed to provide reasonable protection against harmful interference in a residential installation. This equipment generates uses and can radiate radio frequency energy and, if not installed and used in accordance with the instructions, may cause harmful interference to radio communications. However, there is no guarantee that interference will not occur in a particular installation. If this equipment does cause harmful interference to radio or television reception, which can be determined by turning the equipment off and on, the user is encouraged to try to correct the interference by one or more of the following measures:

- Reorient or relocate the receiving antenna.
- Increase the separation between the equipment and receiver.
- Connect the equipment into an outlet on a circuit different from that to which the receiver is connected.
- Consult the dealer or an experienced radio/TV technician for help.

## **FCC RF Radiation Exposure Statement**

This equipment complies with FCC radiation exposure limits set forth for an uncontrolled environment. The antennas used for the transmitter must be installed to provide a separation distance of at least 20cm from all persons and must not be co-located or operating in conjunction with any other antenna or transmitter.