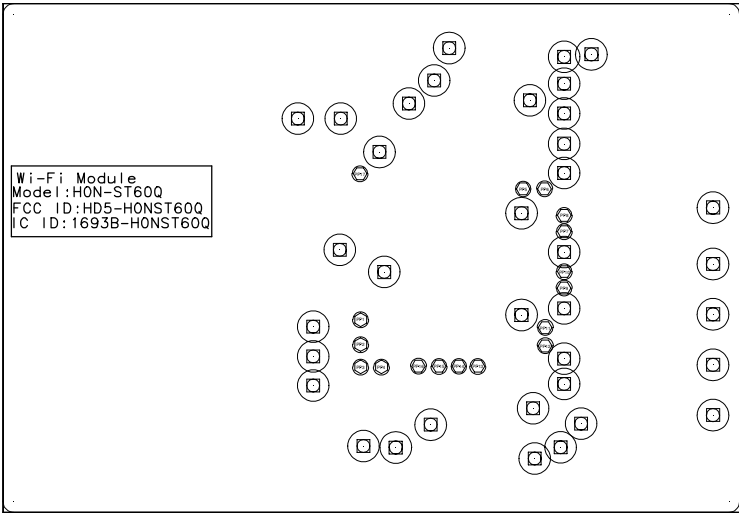


This drawing contains propriatart information and shall not be used or reproduced without written authorization from Honeywell Scanning & Mobility Engineering.



- Note:
1. See BOM for proper component population.
  2. Supplier to meet latest revision of Industrial Workmanship Standards, IPC-A-610, Class 2.
  3. A Certificate of Compliance must accompany all receipts.
  4. FAI Required with initial submission and each ECN/Rev Change, ref Honeywell doc #500007391 & form #L4-GLBL-LOG-1724.

DIMENSIONS ARE IN MM

UNLESS OTHERWISE NOTED,  
TOLERANCES:

DIMENSIONS: 0.X ±0.2

DIMENSIONS: 0.XX ±0.10

ANGLES: ±1.0 DEGREE

01	XX-XX-XX	XXXX-XXXX
REV	DATE	ECN NO.
REVISION		

**Honeywell**

BOTTOM ASSEMBLY DRAWING:  
QJLN WIFI BOARD

NAME	NUMBER	REV
MS	50134462-005	01

DATE: 05-05-19	SHEET 2 OF 2
----------------	--------------

## Label Location

