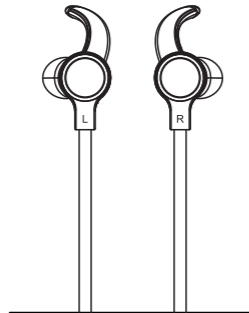




S55

SPORT BLUETOOTH HEADSET

To assure the finest performance, please read this user's manual carefully. Keep it in a safe place for future reference.



- ★ Item : S55
- ★ Bluetooth version: V4.2
- ★ Music time: 7-8 hours
- ★ Impedance: 25Ω±15%
- ★ Voice prompt: English
- ★ Speaker sensitive: 93dB±3dB
- ★ Frequency response: 20Hz~20KHz
- ★ Playing system: ISO and Android PC etc
- ★ Driver diameter: 9.2mm
- ★ Operation distance: ≤10m
- ★ Battery capacity: 100mAh

Warning :

- ★ Do not listen with the earphones while driving or cycling.
- ★ Do not attempt to modify, crack, jack or sink in the water.
- ★ Do not expose the earphones to extreme temperature and moist dirty environment.
- ★ Avoid continuous earphones-use at high volume for long time.
- ★ Keep this earphone & its accessory out of reach of children.

Wearing The Earphones :

1. Carefully wear the earphones with L mark in your left ear, and the one with right mark in your right ear.
2. Twist the earphones up into the ear canal while inserting, until outside noise is blocked out.

Important:

If there seems to be lack of low frequency response (bass), this means that the earphones eartips are not forming a tight seal. Greatly push the earphones deeper into the ear canal or try a different earplugs.

Warning:

Do not push the earphones sleeve beyond the ear canal opening.

Removing The Earphones:

Grasp the body of earphones and gently twist to remove.
Note: Do not pull on cable to remove earphone.

Power on/Pairing/Power off/Call

1. Power on

Long press the power button for about 3 seconds, hearing the alert tone "power on" and the LED blue light flash for 2 seconds, it means the bluetooth earphone is worked.

2. Pairing

Long press the power button for about 5 seconds, hearing the alert tone "Power on" and "Pairing", it means it is in the pairing mode. Then turn on the Bluetooth function of the phone or other device, and connect the bluetooth signal named "Right ③", hearing the alert tone "Connected", it means it is paired successfully.

3. Power off

Long press the power button for about 3 seconds, hearing the alert tone "power off" and the LED red light flash for 2 seconds, it means the bluetooth earphone is turned off.

4. Call model

Double press power key, call back last call; call in, press power key once time to answer; and press power key again to hang up

Controls

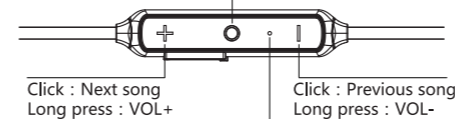
1. Call :

Short press : Answer/Hang up
Long press for 2 seconds : Reject a call

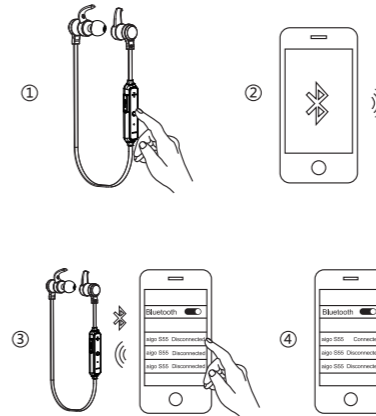
2. Music :

Short press : Play/Pause (Music player is working)

3. Long press for 3 seconds : Power on/off



Charging : LED red light turns on
Full charging : LED blue light turns on



Note: Take the name searched as the standard

Choosing Earplugs :

Select an earphones earplugs that provides the best fit and sound isolation. It should be easy to insert, fit comfortably, and easy to remove.



Soft flex earplugs :

it provides small/medium/large three size, the material made from silicon rubber.

Deal With Discarded Electronic Devices :

For proper treatment to avoid harmful effect on human health and environment, please contact your local municipality, your waste disposal service or the point of sale where you purchased the items.



Beijing EROS Technology Co., Ltd

Address: Room 321, 3rd Floor, Building 1, No 26, Lianhuachi Xili, Haidian District, Beijing, China
Website: www.aigo.com

Contact US

Email : ser@aigo.com
Official Website: www.aigo.com

NOTE: This equipment has been tested and found to comply with the limits for a Class B digital device, pursuant to part 15 of the FCC Rules. These limits are designed to provide reasonable protection against harmful interference in a residential installation. This equipment generates uses and can radiate radio frequency energy and, if not installed and used in accordance with the instructions, may cause harmful interference to radio communications. However, there is no guarantee that interference will not occur in a particular installation. If this equipment does cause harmful interference to radio or television reception, which can be determined by turning the equipment off and on, the user is encouraged to try to correct the interference by one or more of the following measures:

- Reorient or relocate the receiving antenna.
 - Increase the separation between the equipment and receiver.
 - Connect the equipment into an outlet on a circuit different from that to which the receiver is connected.
 - Consult the dealer or an experienced radio/TV technician for help.
- Changes or modifications not expressly approved by the party responsible for compliance could void the user's authority to operate the equipment. This device complies with Part 15 of the FCC Rules. Operation is subject to the following two conditions:
- (1) this device may not cause harmful interference, and
 - (2) this device must accept any interference received, including interference that may cause undesired operation.