

产品使用说明书

一、连接方法

- 1、从包装中取出键盘将USB插头插入您的电脑笔记本电脑或MAC电脑的USB端口,该设备不需要安装驱动程序，键盘即插即用，灯光默认常亮模式。
- 2、滚轮旋钮默认上下滑动音量控制，短按静音，长按3秒滚轮旋钮键，同时NUM CAP WIN灯闪三下，此滚轮旋钮上下滑动转换成灯光亮度控制，短按切换灯效模式。旋钮左右转换成背光亮度，单下压切换背光灯效，在按3秒旋钮键，转换成音量模式。

二、规格说明

键盘键数	电池容量
键盘重量	键盘线长
工作电压	键盘尺寸
工作电流	防鬼键数
适应系统 Win XP/Vista/Win7/Win8/WIN10等	

三、休眠机制与蓝牙名称描述

1、省电休眠	键盘无按键操作5分钟后背光关闭，按任意按键唤醒键盘背光并回连蓝牙/2.4G
2、深度休眠	键盘无按键操作30分钟后深度待机，蓝牙断开且休眠，按任意按键唤醒键盘背光并回连蓝牙/2.4G
3、低电状态	3.1低电时：屏幕电池图标显示零格（指示灯3低压时红光慢闪） 3.2充电时：屏幕电池图标显示五格，旁边有闪电标识表示（指示灯3充电时红光常亮） 3.3满电时：屏幕电池图标显示五格（指示灯3熄灭）
4、1：蓝牙通道1	
4、2：蓝牙通道2	
4、3：蓝牙通道3	

四、三模操作方法

一、蓝牙模式

- 1.1蓝牙通道1  
切换方式：短按FN+W组合键切换蓝牙通道，W按键灯光慢闪，进入回连状态，回连成功灯光恢复至正常灯效。

配对方式：长按FN+W组合键3秒后开始配对，W键灯光（对应蓝色）快速闪烁进入对码模式，连接成功后灯光恢复至正常灯效。

- 1.2蓝牙通道2  
切换方式：短按FN+E组合键切换蓝牙通道，E按键灯光慢闪，进入回连状态，回连成功灯光恢复至正常灯效。

配对方式：长按FN+E组合键3秒配对，E键灯光（对应青色）快速闪烁进入对码模式，连接成功后灯光恢复至正常灯效。

- 1.3蓝牙通道3  
切换方式：短按FN+R组合键切换蓝牙通道，R按键灯光慢闪，进入回连状态，回连成功灯光恢复至正常灯效。

配对方式：长按FN+R组合键3秒配对，R键灯光（对应紫色）快速闪烁进入对码模式，连接成功后灯光恢复至正常灯效。

二、2.4G模式

- 2.1 2.4G模式  
切换方式：短按FN+Q组合键切换蓝牙通道，Q按键灯光慢闪，进入回连状态，回连成功灯光恢复至正常灯效

配对方式：长按3秒FN+Q强制进入2.4G对码模式，Q键灯光（绿光）快闪，对码完成后停止闪烁（用于售后），配对成功后退出对码，灯光恢复至正常灯效。

三、有线模式

- 3.1有线模式切换方式：按FN+T切换到有线档位，插入USB数据线即有线连接

五、产品指示灯



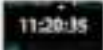
1、Caps lock 开关指示灯	打开锁Caps lock冰蓝光常亮，关闭Caps lock冰蓝
2、Num锁 开关指示灯	按下时冰蓝光常亮，再按下解锁冰蓝光熄灭。
锁WIN	按下FN+WIN键亮，再按下解锁灯灭

六、灯光切换组合键

FN+\	灯效切换，18种灯效依次循环：默认灯效：【随波逐流】.【随波逐流（默认）】、峰回路转、一触即发、一石二鸟、涟漪扩散、川流不息、重峦叠嶂、斜风细雨、来回穿梭、静态恒亮、单键点亮、单键熄灭、繁星点点、漫天飞雪、百花争艳、动态呼吸、光谱循环、彩泉涌动、多彩纵横。】
FN+↑	灯光亮度+（六档，默认出厂最高亮度）调至极限时整体背光闪烁3次表示（0%-20%-40%-60%-80%-100%）此处多了1档
FN+↓	灯光亮度-（六档）调至极限时整体背光关闭表示，（100%-80%-60%-40%-20%-0%）
FN+←	灯效方向调节
FN+→	切换背光颜色（顺序依次为：RGB红橙黄绿青蓝紫白RGB）
FN+ = +	灯光速度-（六档，出厂默认三档）调至极限时整体背光闪烁3次表示（100%-80%-60%-40%-20%-0%）
FN+ = +	灯光速度+（六档）调至极限时整体背光闪烁3次表示。（0%-20%-40%-60%-80%-100%）此处多了1档
FN+back	关闭灯光\打开灯光
FN+ESC	长按3秒-5秒，键盘背光闪烁3下，恢复出厂设置

七、屏幕显示及设置

1、主页面显示：



2、电量显示：



3、日期显示：



4、连接WIN系统显示：



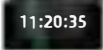
5、连接MAC系统显示：



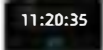
6、有线连接显示：



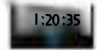
7、2.4G连接显示：



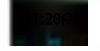
8、Bt1连接显示：



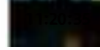
9、Bt2连接显示：



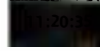
10、Bt3连接显示：



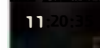
WIN显示：



12、大小写切换显示：



13、数字区开关显示：



14、设置页面显示：



15、灯光效果调节



16、灯光颜色调节：



17、灯光亮度调节：



18、灯光速度调节：



19、屏幕语言切换：



Product Instruction Manual

一、Connection Method

1. Take the keyboard out of the package and plug the USB plug into your computer, laptop or MAC USB port, the device does not need to install drivers, keyboard plug and play, lighting default on mode.
2. scroll knob default up and down slide volume control, short press mute, long press 3 seconds scroll knob key, sameWhen the NUM CAP WIN light flashes three times, the scroll knob slides up and down to convert the light brightness control.Tap to switch the ight mode. Knob left and right to convert to backlight brightness, single press switch backlight effect, inPress the 3-second knob key to switch to volume mode.

二、Hibernation Mechanism and Bluetooth Name Description

1.Power Saving Sleep	Keyboard backlight turns off after 5 minutes of no key operation, press any key to wake up the keyboard backlight and connect back to Bluetooth/2.4G.
2.deep sleep	Keyboard deep standby after 30 minutes of keyless operation, Bluetooth disconnected and hibernated, press any key to wake up keyboard backlight and connect back to Bluetooth/2.4G
3.low power state	3.1 Low battery: the screen battery icon shows zero cells (red light flashes slowly when the indicator 3 low voltage) 3.2 When charging: the screen battery icon shows five cells, next to the lightning logo indicates that (Indicator 3 red light is always on when charging) 3.3 When fully charged: the screen battery icon shows five cells (Indicator 3 is off)
4.Bluetooth Name:	4.1: Bluetooth Channel 1 4.2: Bluetooth Channel 2 4.3: Bluetooth Channel 3

三、Three-mode Operation Methods

I. Bluetooth mode

- 1.1 Bluetooth channel 1Switching mode: Short press FN+W key combination to switch Bluetooth channel, W button light flashes slowly to enter the state of connecting back, connecting back successfully.Successful light returns to normal light effect.

Pairing mode: Long press the FN+W key combination for 3 seconds to start pairing, the light of W key (corresponding to blue color) flashes rapidly to enter the pairing mode, and the light returns to normal light effect after successful connection.

- 1.2 Bluetooth channel 2Switching mode: short press FN+E key combination to switch Bluetooth channel, E button light flashes slowly to enter back to the state, back to the success of the light to return to the normal light effect.

Pairing mode: Long press FN+E combination key for 3 seconds to pair, the E key light (corresponding to cyan color) flashes rapidly to enter the pairing mode, and the light returns to normal light effect after successful connection.

- 1.3 Bluetooth channel 3Switching mode: short press FN+R key combination to switch Bluetooth channel, R button light flashes slowly to enter back to the state, back to the success of the light to return to the normal light effect.

Pairing mode: Long press the FN+R key combination for 3 seconds to pair, the light of R key (corresponding to purple color) flashes rapidly to enter the pairing mode, and the light returns to normal light effect after successful connection.

II. 2.4G model

- 2.1 2.4G modeSwitching mode: short press FN+Q combination key to switch Bluetooth channel, Q button light flashes slowly to enter back to connect state, back to connect successfully light returns to normal light effect.

Pairing mode: long press FN+Q for 3 seconds to force to enter 2.4G pairing mode, Q key light (green) flashes fast, stop flashing after pairing is completed (for after-sales service), exit pairing after pairing is successful, and the light returns to normal light effect.

III. Wired mode

- 3.1 Wired mode switching mode: press FN+T to switch to wired gear, insert the USB cable that is wired connection.

四、Product Indicator



1.Caps lock Switch indicator:	Open lock Caps lock ice blue light is always on, close Caps lock ice blue light is off.
2.Num lockSwitch indicator:	The ice blue light is always on when pressed, and goes off when pressed again to unlock the ice blue light.
3.Lock WIN	Press FN+WIN to light up, then press again to turn the unlock light off.

五、Light switching key combinations

FN+\	Light effect switching, 18 kinds of light effects cycle sequentially: Default light effect: [Running with the waves]. [Running with the waves].(Default), "Peak to Peak", "One Touch", "Two Birds with One Stone", "Ripple Spreading", "Continuous Flow", (Default): [Rippling, One Touch, Two Birds with One Stone, Ripple Diffusion, Continuous Flowstars, snow, flowers, dynamic breathing, spectral circulation, colorful springs, Multi-colored.
FN+↑	Lighting Brightness + (6 levels, default factory maximum brightness) adjusted to the limit when the overall backlight flashes 3 times to indicate (0%-20%-40%-60%-80%-100%) here 1 more level
FN+↓	Light Brightness - (six levels) Indicates that the overall backlighting is off when set to the limit. (100% - 80% - 60% - 40% - 20% - 0%)
FN+←	Lighting Direction Adjustment
FN+→	Switching backlight colors (in order: RGB red, orange, yellow, green, cyan, blue, purple, white RGB)
FN+ ↵	Lighting speed - (six speeds, factory default three speeds) when adjusted to the limit of the overall backlight flashes 3 times to indicate that the (100%-80%-60%-40%-20%-0%)
FN+ = +	Lighting speed + (six speeds) The overall backlight flashes 3 times when adjusted to the limit is indicated.(0%-20%-40%-60%-80%-100%) 1 more speed here.
FN+back	Lights off \ Lights on
FN+ESC	Long press for 3 seconds-5 seconds, the keyboard backlight blinks 3 times to restore factory settings.

六、On-screen display and settings

1. Main page di play:



2. Power display:



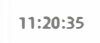
3. Date display:



4. Connect the WIN system display:



5. Co nnect to the MAC system display:



6. Wired connection display:



7. 2.4G connection disp lay:



8.Bt1 connection display:



9. Bt2 connection display:



10.Bt3 connection display:



11. Lock WIN display:



12. Case switching display:



13. Digital zone switch display:



16.light color adjustment



**FCC Warning:**

This equipment has been tested and found to comply with the limits for a Class B digital device, pursuant to part 15 of the FCC Rules. These limits are designed to provide reasonable protection against harmful interference in a residential installation. This equipment generates, uses and can radiate radio frequency energy and, if not installed and used in accordance with the instructions, may cause harmful interference to radio communications. However, there is no guarantee that interference will not occur in a particular installation. If this equipment does cause harmful interference to radio or television reception, which can be determined by turning the equipment off and on, the user is encouraged to try to correct the interference by one or more of the following measures:

- Reorient or relocate the receiving antenna.
- Increase the separation between the equipment and receiver.
- Connect the equipment into an outlet on a circuit different from that to which the receiver is connected.
- Consult the dealer or an experienced radio/TV technician for help.

**Caution:** Any changes or modifications to this device not explicitly approved by manufacturer could void your authority to operate this equipment.

This device complies with part 15 of the FCC Rules. Operation is subject to the following two conditions:

(1) This device may not cause harmful interference, and (2) this device must accept any interference received, including interference that may cause undesired operation.

This equipment complies with FCC radiation exposure limits set forth for an uncontrolled environment. This equipment should be installed and operated with minimum distance 0cm between the radiator and your body.